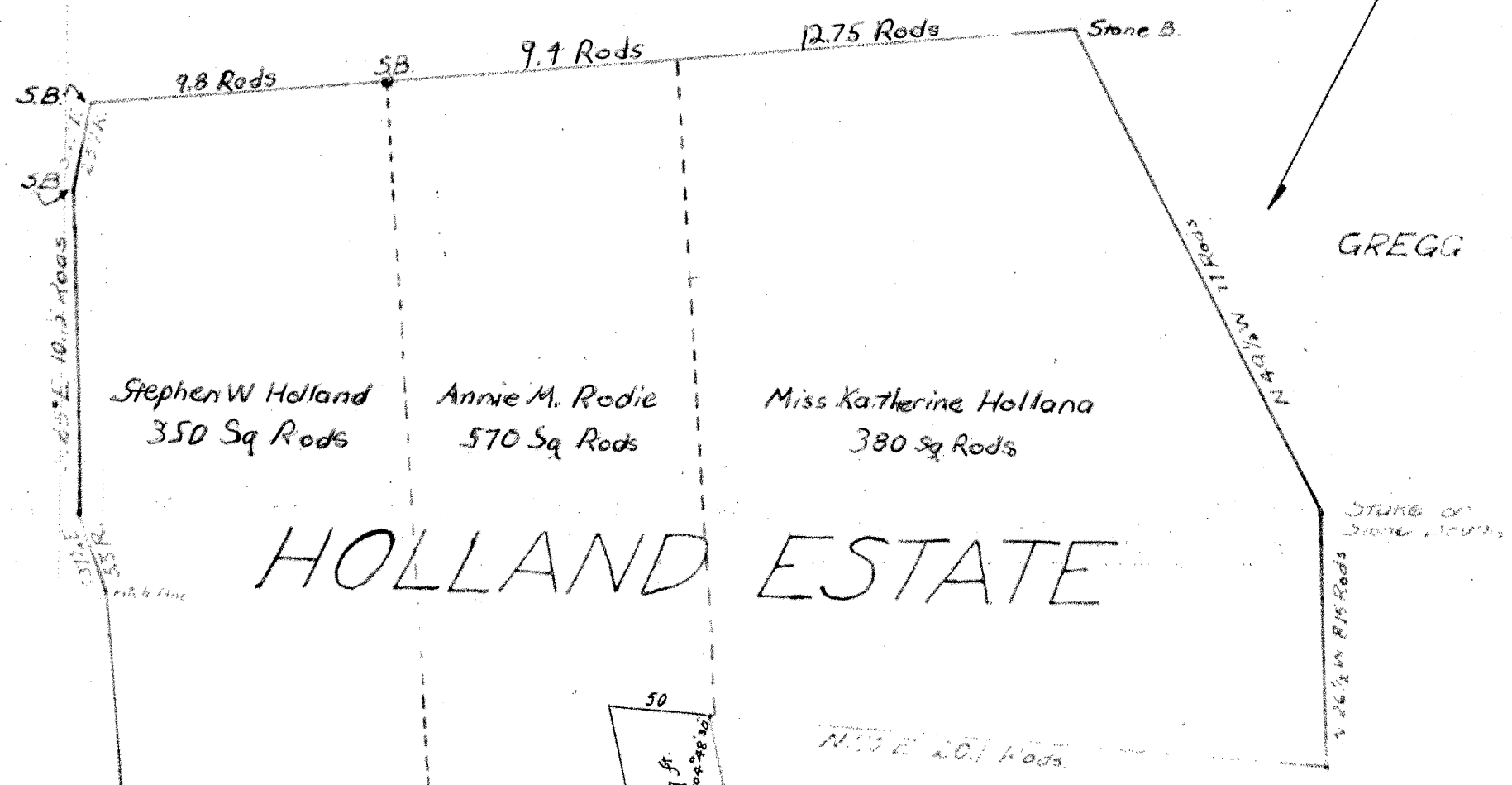


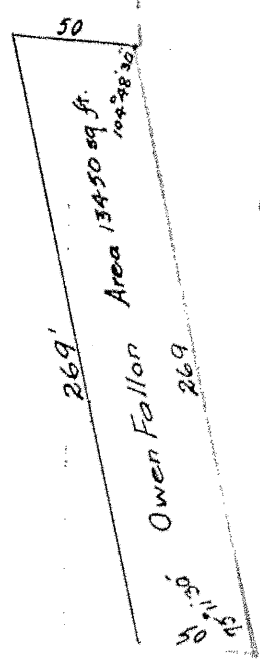
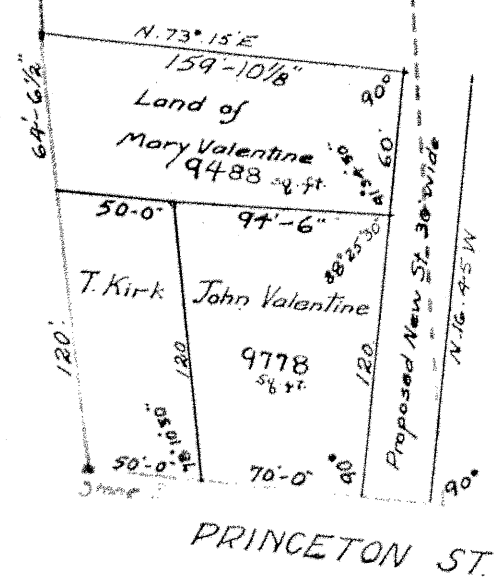
PL BK 42 PG 14
DATE May 18, 1923
"For Attested Plan See Original"

TRUANT SCHOOL



HOLLAND ESTATE

TRUANT SCHOOL



GORMAN

JC+W T MONAHAN
CIVIL ENGINEERS
45 MERRIMACK ST.
LOWELL MASS.

LAND OF MARY VALENTINE
JOHN VALENTINE
OWEN FALLON

Aug 1. and 25th 1922 Scale 5R=1in