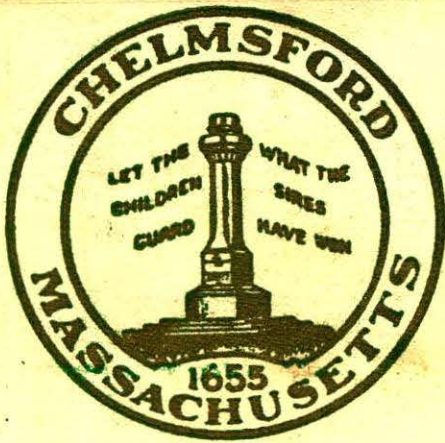


CHELMSFORD PUBLIC LIBRARY  
3 1480 01026 3462



L  
T

1960

N



Carlton Clark

Carl - to a real  
swell kid. -  
Bob Ware

Chelmsford Public Library  
25 Boston Road  
Chelmsford, MA 01824



ACD

Gift  
2011  
50-  
West  
Coll  
CHS  
1960



*The Class of 1960*

proudly presents

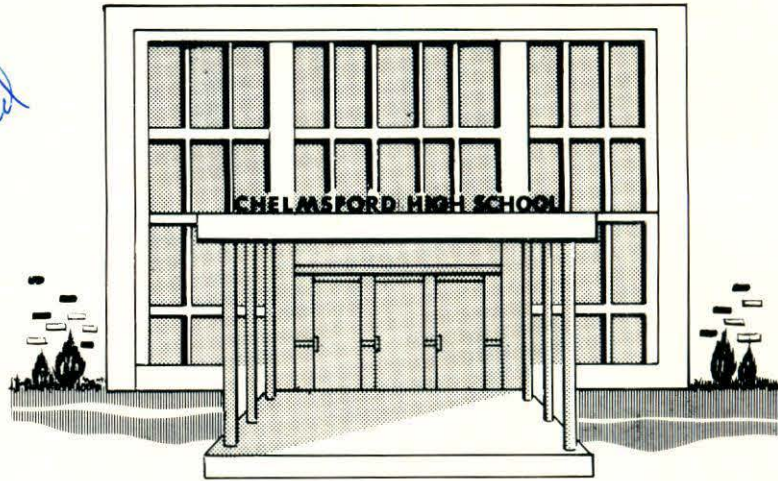
**THE LION**

*Chelmsford High School*

CHELMSFORD

MASSACHUSETTS

Carl  
Don't let  
those kids get the  
best of you when you  
try telling them what to  
do. It's been fun having  
you as a pal. Lot's of luck in  
the future.  
Richard



## Foreword

At the beginning of this year, we seniors faced this doorway, the beautiful symmetrical entrance to our new high school. These doors opened to facilities about which we have dreamed for many years. For us, they have become a symbol. Now, at the end of this school year, they open again and become the much anticipated portal to all the opportunities of the future toward which we have been working through our school years. We shall advance through this doorway to meet the challenges of our world and to find the fulfillment of our dreams.

## *Dedication To...*



With grateful acknowledgment of . . .  
his scholarly attitude and proficient teaching,  
his depth of understanding and genuineness of interest,  
his high principles and personal dignity,  
which have been an inspiration to us all,

we,  
the Class of 1960,  
dedicate our yearbook,  
**THE LION**  
to  
**MR. DONALD A. HANKINSON**

## *Editorial*

### FORTITUDO PROVOCATIONI.

Courage to meet the challenge — what better motto could the class of 1960 have as its inspiration and its aspiration! All have dreams — let them be what they may — which remain elusive, intangible, and transitory until those who produce them develop the will to make them a reality and the courage to carry them through to fruition, regardless of the obstacles in the way.

Our new school has been a worthy object lesson for us. First the school plant, its modern equipment, its expanded program, and its wonderful opportunities were just the dreams of our school committee and administrators. They had the vision and the courage to plan for the future, and the citizens of the town had the appreciation and the understanding to accept the challenge and to work with them for the betterment of the youth of Chelmsford. We have experienced the reality and enjoyed it to the full.

Now the future is opening to us. We are stepping out of the shelter of home and school and are facing the challenge of an adult world, new to us. The success of the days to come rests upon the courageous way we accept the problems of this world. World peace, the struggle between philosophies of government, the controversy over the atom bomb, the competition in conquering space, and the problem of the equality of man regardless of race are just a few of the many great issues with which we must grapple. May we treat each problem great or small with strength, wisdom, and faith in God, remembering that we move toward our goal only when we have — COURAGE TO MEET THE CHALLENGE — FORTITUDO PROVOCATIONI.



THOMAS L. RIVARD  
*Superintendent of Schools*



JOHN T. CONRAD  
*Principal of High School*



C. EDITH MCCARTHY  
*Vice-Principal of High School*

# Administration





*Planning Our Day*



## *Board of Editors*

Business Advisor: George J. Betzes

Kathryn Bernacki  
 Edwin Drescher  
 Walter Dyke  
 Ronald Engel  
 Raymond Haithwaite  
 Jane Hansen  
 David Kydd  
 Eunice LeMasurier  
 Louise Manahan  
 Gertrude Morris

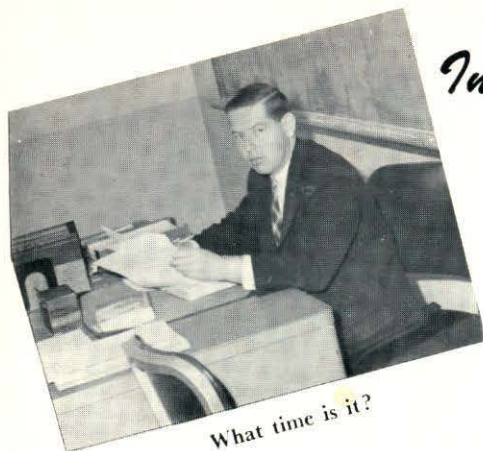
Literary Advisor: Helen R. Poland

Linnea Peterson  
 Ernest Pouliot  
 Doris Reid  
 Lillian Rondeau  
 Judith St. Pierre  
 Martha Shay  
 Beverly Silva  
 Gwendolyn Spinazola  
 Joseph Stavely  
 Kelvin Worthley

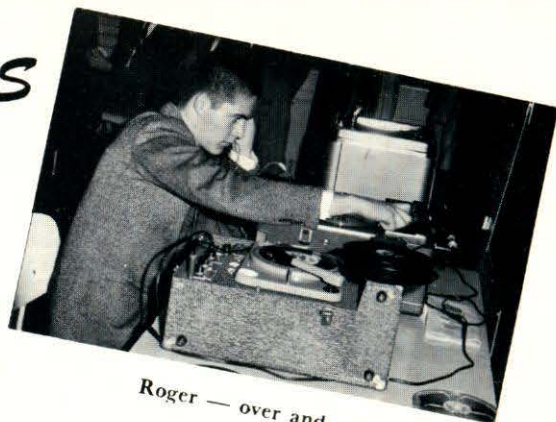
The preparation of THE LION of 1960 has been sparked by weekly meetings of the yearbook staff where ideas were pooled, constructively criticized, and developed. We have tried to assemble memories of the outstanding events and activities of our school life, emphasizing particularly, the expanded program of our new school. May this book be a treasury of high school highlights and remembrances of associations and friendships at Chelmsford High School.



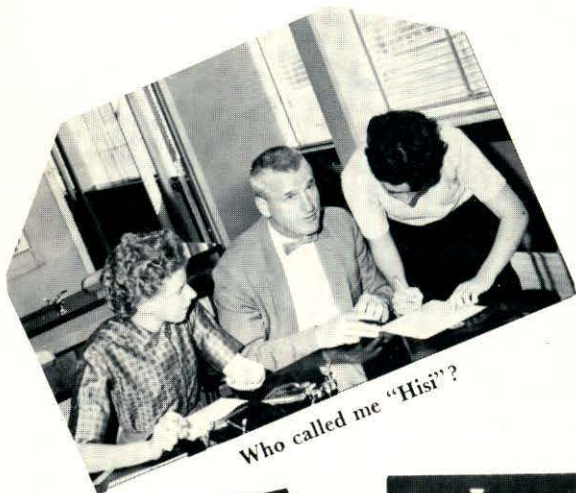
# Inside CHS



What time is it?



Roger — over and out



Who called me "Hisi"?



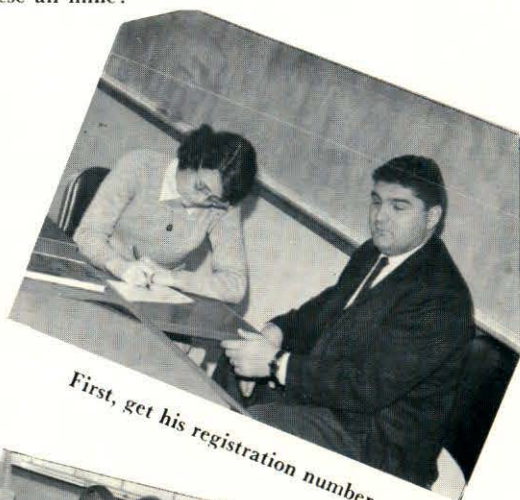
Are these all mine?



This is art?!



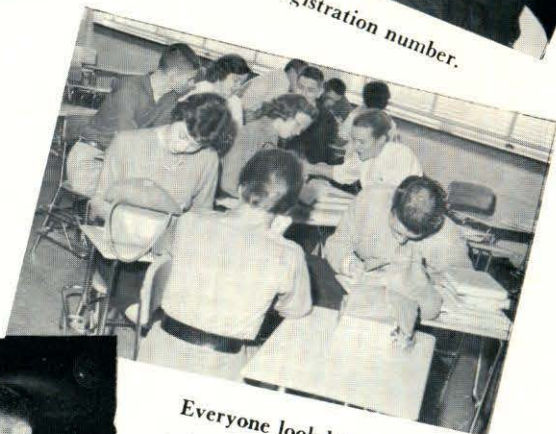
T - O



First, get his registration number.



Now, boys, two and two are four!

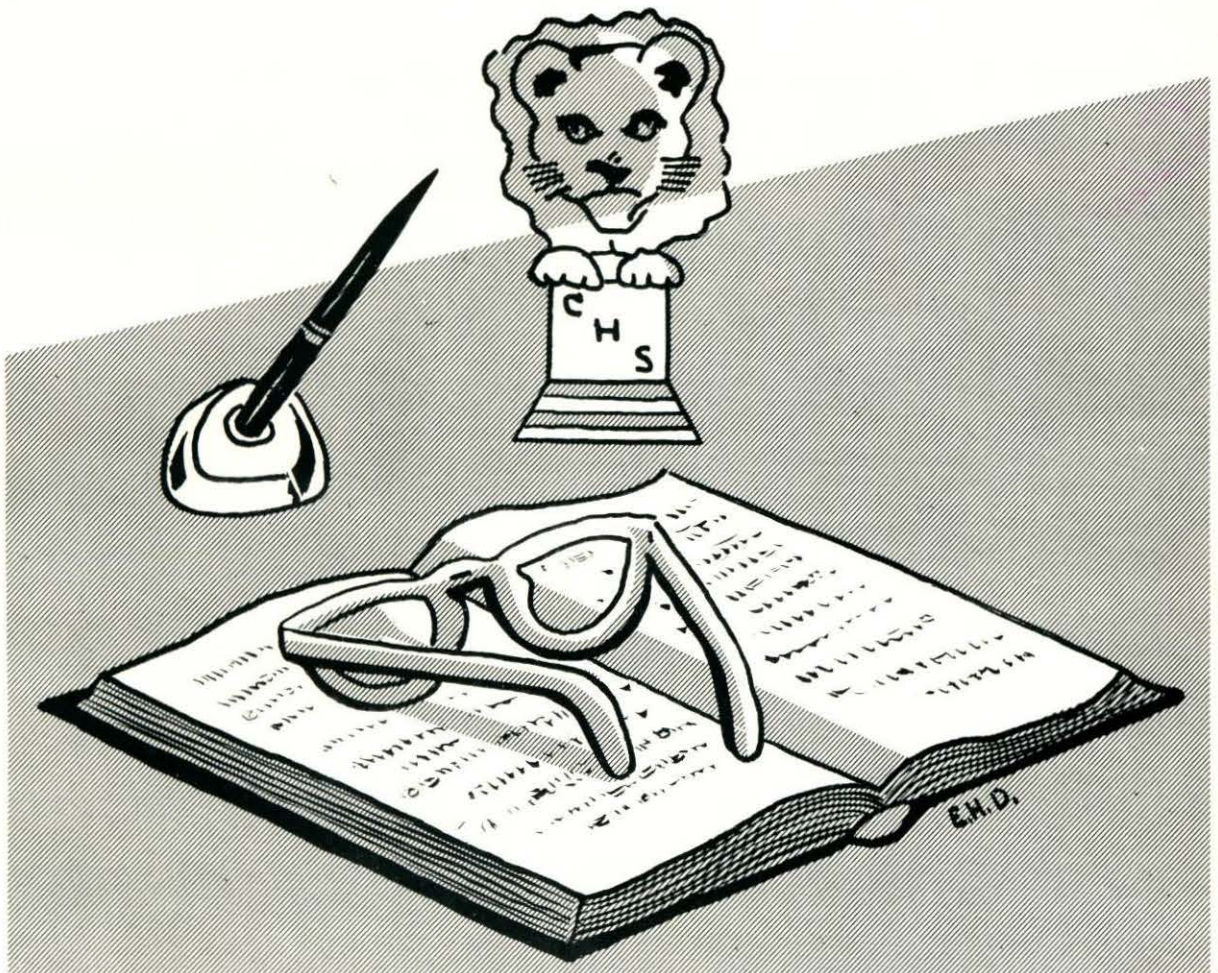


Everyone look busy, he's going to take our picture!



Civics was never like this!

# FACULTY





Helen B. Mills  
B.L.I.  
Librarian



Paul W. Murphy  
B.S.  
Science



William G. Phelps  
B.A.  
Music



Dorothy K. Sexton  
B.S. in Ed.  
Business



Evelyn Wexler  
B.A.  
English



Nancy Ovitt  
B.S.  
Home Economics



Helen M. Jewett  
R.N.  
School Nurse



M. Eileen Hood  
High School Secretary

*Dept. Heads*

## Department Heads





**George J. Betzes**  
B.S. in Ed., Ed. M.  
Business



**Edward J. Flynn**  
B.A.  
Social Studies



**Edward J. Lynch**  
B.A.  
English



**Francis W. Farley**  
B.A.  
Foreign Languages  
English



**Christina A. Hanley**  
B.A.  
English



**Carol J. Murphy**  
B.S.  
Physical Education



**Henry P. McCarthy**  
B.S.  
Physical Education



**Carlton P. Plummer**  
B.S. Ed.  
Art Education



**George N. Klesaris**  
B.S.  
Driver Education



**Walter A. Burnell**  
B.S. in Ed., Ed. M.  
Industrial Arts



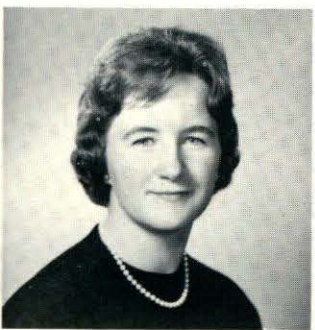
**Robert A. Dube**  
B.A.  
Foreign Languages  
English



**Elaine B. Garside**  
B.S.  
Mathematics



**Barbara K. Holmer**  
B.S.  
Home Economics



**J. Francene Kealy**  
B.A.  
Science



**John Le Clere**  
B.S. in Ed.  
Industrial Arts



**John P. McGuire**  
B.S.  
Science



**F. Christine Booth**  
B.A.  
Foreign Languages



**Ernestine E. Maynard**  
B.S. in Ed.  
Business



*Helen R. Poland*  
**Helen R. Poland**  
B.A.  
English



*Charlotte S. Carriel*  
**Charlotte S. Carriel**  
B.A., Ed. M.  
English



**Mildred M. Hehir**  
B.A., Ed. M.  
Foreign Languages



**Marjorie B. Scoboria**  
B.A., M.A.  
Mathematics



**Murray B. Hicks**  
B.S.  
Science



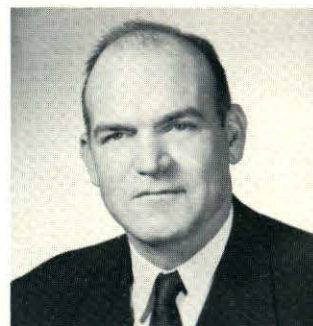
**Shirley H. Hardy**  
B.S. in Com. Ed.  
Business



**Joseph P. Nolan**  
B.S.  
Mathematics



**John J. Dunigan**  
B.A., Ed. M.  
Social Studies



**Thomas Green**  
B.A., Ed. M.  
Guidance, Social Studies



**John W. Sargent**  
B.A., Ed. M.  
Mathematics



**Martha F. Kinneen**  
B.A., M.A.  
English



**Ernest R. Shepard, Jr.**  
B.A., M.A.  
Social Studies



**Margaret M. Kavanagh**  
B.A., M.A.  
Guidance, English



**George Simonian**  
B.S., M.A.  
Science



# SENIORS

E.H.D.





**FREDERICK CLIFFORD FIELD**  
Class President

Class Officer: Treasurer 1, President 2, 3;  
Student Council 2, 3, 4; Junior Red Cross 1,  
2, 3, 4; Science Club 2, 3; Debating Club 4;  
Booster Drive 1, 2, 3; United Drive 2, 3; A.  
A. Member 1, 2, 3, 4

"Fred" - popular - four years of class  
officering speak for themselves - former  
Page's boy - DeMolay - debater -  
staunch French III'er - future aero-  
nautical engineer - VMI?



**WALTER DYKE**  
Class Vice President

Yearbook Staff 4; Junior Red Cross 1, 2, 3,  
4; Science Club 2, 3; Debating Club 4; Driver  
Education & Training 3; Graduation &  
Reception Usher 3; A. A. Member 1, 2, 3;  
Science Fair 2, 3

Polite, personable, and popular - spon-  
taneous laughter - never a cross word -  
Mr. Hick's scapegoat - Fred's pal - the  
Purity's cashier, bundle boy, and bas-  
ket slinger - VMI.



**MARY LOUISE MICHALOWSKI**  
Class Secretary

Class Officer: Secretary 2, Treasurer 3; Office  
Girl 2; Junior Red Cross 1, Representative 2,  
3; Glee Club 1; Driver Education & Training  
3; Booster Drive 1, 2, 3, 4; United Drive 1,  
2, 3, 4; Open House Usher 2; A. A. Member  
1, 2, 3; A. A. Representative 1; Dance Com-  
mittee 2, 3

Sweet and innocent - roams the halls  
looking for Gerry - eats pizza with  
only Joe - future undecided.



**NORMA IRENE BELL**  
Class Treasurer

Basketball 3, Co-Captain 4; Basketball J.V.  
1, 2; Field Hockey 2, 3, 4; Field Hockey J.V.  
1; Intramural Sports 2; Junior Red Cross 1,  
2, 3, 4; Dramatic Club 4; Glee Club 4;  
Driver Education & Training 3; Booster Drive  
1, 2, 3, 4; United Drive 1, 2; Talent Show 2,  
4; A. A. Member 1, 2, 3, 4; Dance Committee  
2

Able leader of basketball - always be-  
ing teased, especially at lunch - chief  
money collector for senior class - proud  
of Annapolis connections - health,  
wealth, and happiness in the future,  
Norma!



**CHERYL ARMITSTEAD**

Office Girl 4; Junior Red Cross 4; Press Club  
4; Science Club 2; Glee Club 1, 2; Driver  
Education & Training 3; Booster Drive 1, 2, 3;  
United Drive 2, 3; Talent Show 1, 2; A. A.  
Member 1, 2, 3; Christmas Assembly 1, 2;  
Band Concert 1, 2

"Cheryl" - pleasing personality - will-  
ing helper - dates only Ted - the Puri-  
ty's payroll girl - dependable office  
girl - success in the business world.



**GLORIA JEAN AUGER**

Office Girl 3, 4; Junior Red Cross 3; Driver  
Education & Training 4; A. A. Member 1, 4  
"Gloria" - petite - good natured - nat-  
ural curly hair - waitress at Jack's -  
some like 'em tall - efficient office  
girl - future in business.

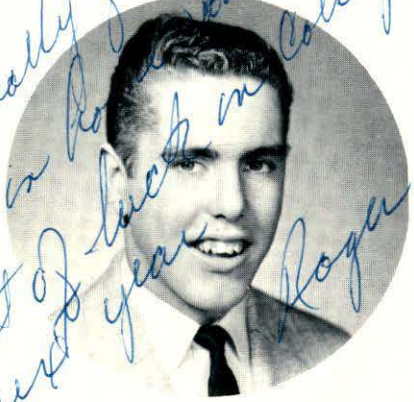


**EVELYN MARIE AVILA**

Intramural Sports 1, 2, 3; Office Girl 4;  
Junior Red Cross Representative 4; A. A.  
Member 2, 3, 4

"Evie" - quiet and reserved until she  
gets going - loves singers and records -  
dislikes working - sincere friend - will  
bring cheer to the business world.





*Carlton  
A really great  
kid in town  
Best of luck in college  
next year  
Roger*

**ROGER ARTHUR BLOMGREN**  
Basketball Manager 2, 3, 4; Baseball 2, 3, 4; Football 2, 3. Co-captain 4; Driver Education & Training 4; Booster Drive 2; A. A. Member 1, 2, 3, 4; Planning Committee 4  
"Roger" - outstanding ball-hiking co-captain - prompt supply boy - heart interest, Sally - a boating, swimming and all-around vacationist at Corbett's - University of Massachusetts, watch for Roger!



*eat -  
Best of luck  
To  
well for  
at -*

**ALBERT JOSEPH BOUDREAU**  
Driver Education & Training 4  
Quiet and reserved - has eyes for only Melanie - drives a Chevy - an industrious Purity boy - we wish you the best of everything in whatever you do.



*top fellow  
home  
roomer  
well  
love &  
stay happy  
and may  
in your future  
Carole Marie*

**CAROLE MARIE BOWSER**  
Office Girl 2, 3; Junior Red Cross 4; Press Club 4; Science Club 2; Driver Education & Training 4; Booster Drive 3; United Drive 3; A. A. Member 2, Representative 1  
"Carole" - big, dreamy blue eyes - loves to chit-chat - proud owner of "Fifi" - reliable news copyist - capable business woman - a shining future in the business world.



*Carlton  
A real  
friend!  
I'll be  
with you  
every  
where  
you  
around  
I'll be  
with you  
every  
where  
you  
around  
I'll be  
with you  
every  
where  
you  
around*

**BARBARA VIRGINIA BURKINSHAW**  
Class Officer; Treasurer 2; Field Hockey 4; Field Hockey J.V. 3; Office Girl 4; Junior Red Cross 1, 2, 3; Representative 3; Press Club 4; Dramatic Club 2, 3, 4; Glee Club 1, 2, 3; Driver Education & Training 3; Booster Drive 1, 2, 3; United Drive 2, 3; A. A. Member 1, 2, 3, 4; Finance Committee Chairman 4; Dance Committee 3; Softball 2, Manager 3  
"Barbie" - a bundle of energy - "Be-ware, woman driver!" - interests in Needham - babbles on about "Jer" - her aim - college, of course.



**GERARD LOUIS BUTEAU**  
Track 4; Driver Education & Training 3; Booster Drive 2, 3, 4; A. A. Member 3, 4; A. A. Representative 4; Dance Committee 2, 4; Supply Boy 4  
"Jerry" - co-ordinator of supplies - bombs about town with the "boys" - loves ice hockey - forms combine with D. Gilet - ready with a joke and a laugh - U. S. Navy in the future.



*Carlton  
Nancy  
a  
future*

**NANCY JEAN CAREY**  
Junior Red Cross 4; Press Club Vice-President 4; Driver Education & Training 1; United Drive 1; A. A. Member 1, 2  
"Nancy" - always having those car troubles - breads those cold winter mornings - loyal patron of Jack's Diner - another sleep-later & helpful addition to the field she chooses.



*Carlton  
Thanks for the  
typing and have fun  
but wish  
Wes.*

**WESLEY HUNTER CARKIN**  
"West" - well-known wit - voracious reader - wheels a '52 Ford - Terry, nuptials perhaps? - joins the Navy for electronics future.



**GARY JAMES CARON**

Junior Red Cross 1, 2, 3, 4; Driver Education & Training 3; Booster Drive 2; A. A. Member 1; Dance Committee 1  
Owns a cool Ford - teachers' dream, what! - puts time in at the Purity - should have joined the debating club - will make his mark.



**SHEILA MARIE CASSIDY**

Intramural Sports 1, 2, 3; Junior Red Cross Representative 4; Driver Education & Training 3, 4; Booster Drive 2; United Drive 3; A. A. Member 1, 2, 3, 4  
"Sheila" - passion for horses - collection of their likenesses - pert, perky, and vivacious - hear that giggle! - ever faithful to North - a future in the business world.

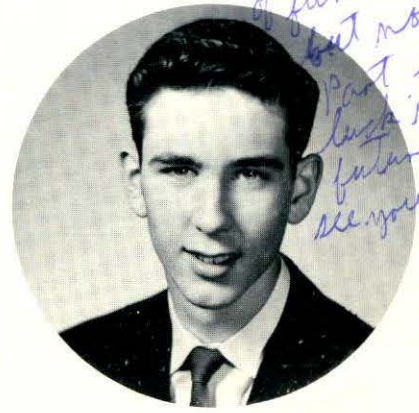


**CARLTON BARKER CLARK**

Driver Education & Training 3  
"Carl" - sociable - "May I have the car, but Mom!" Ray's buddy - gladly would be leave and gladly teach - elementary teacher in the making - headed for Lowell State Teachers College

*Don't be afraid of dumb people - you're a smart person*

*Cool, we sure had a lot of fun in high school but now we part good luck in the future. Hope to see you again. John.*



**JOHN FRANCIS CONWAY**

Junior Red Cross 1, 2, 3, 4  
Never a noisy neighbor - hash slinger at trailer lunch - hopes to count other peoples' pennies - Merrimack for accounting.



**KATHLEEN MARY CLARK**

National Honor Society 3, 4; Field Hockey F. V. 3; Varsity 4; Office Girl 4; Junior Red Cross 1, 2, 3, 4; Representative 2; Press Club 3; Dramatic Club 2, 3, 4; Science Club & Fair 2, 3; Glee Club 3; Driver Education & Training 3, 4; Graduation & Reception Committee 3; United & Booster Drives 2, 3, 4; A. A. Member 1, 2, 3, 4  
"Kathy" - a pink and white gal with lots of energy - "Oh boy, now for driver training!" - always dependable - college bound in the fall.

*Wornton  
ate a home-  
com buddy  
math?*



**PATRICIA ANNE CONNOR**

Intramural Sports 1, 2, 3; Junior Red Cross 1, 2, 3, 4; Glee Club 1; Driver Education & Training 3; Talent Show 2; A. A. Member 1, 2, 3  
"Pat" - wears a friendship ring from Herb - makes a twosome with Joan - frequent visits to the Hi Hat - wedding bells in the future.

**WENDY BARBARA COOKE**

National Honor Society 3, 4; Cheerleaders 3, 4; Junior Red Cross 1, 2, 3, 4; Dramatic Club 2, 3, 4; Science Club 2; Driver Education & Training 3, 4; Graduation & Reception Usher 3; Booster Drive 1, 2, 3, 4; United Drive 2, 3; A. A. Member 1, 2, 3, 4; Science Fair 2; Motto Committee Chairman 4; Dance Committee 3, 4  
One of our faithful cheerleaders - has a certain liking for New York - peppy basketball player at the "Y" - will attend University of Connecticut.





**JAMES JOSEPH COSSETTE**  
 Junior Red Cross 1, 2, 3, 4; Driver Education & Training 3, 4  
*James will find a new car from Bob's buddy - always talking about cars - good luck in his future!*



**JOHN JAMES CULLEN**  
 Football J. V. 1, 3; Dramatic Club 4; Science Club 2; Driver Education & Training 4; Booster Drive 2; United Drive 1, 2, 3; Talent Show 3  
 "Jack" - perpetual tongue-wagger - wise cracker supreme - always a pair of "Jacks" - drags in a Merc. station wagon - Mrs. Carriel's pet - service bound (Foreign Legion?)



**CATHERINE GAIL CURRAN**  
 Field Hockey J. V. 1, 2; Intramural Sports 1, 2, 3; Junior Red Cross 1, 2, 4; Representative 3; Dramatic Club 2; Glee Club 1; Booster Drive 1, 2, 3; United Drive 3; A. A. Member 1, 2, 3, 4; Christmas Assembly 1  
*Cathy - also answers to Gail - petite, neat and blushes easily - salesgirl at Robert Hall's - chums with Colleen - Good Luck in the future.*  
*Love Cathy*



**COLLEEN ANN DARON**  
 Intramural Sports 1, 2; Junior Red Cross 1, 2, 3, Representative 4; Dramatic Club 4; Glee Club 3, 4; Driver Education & Training 3; Booster Drive 4; United Drive 1; Talent Show 2, 4; A. A. Member 1, 2, 3, 4; Dance Committee 4; Band Concert 3, 4; Christmas Assembly 1, 3, 4  
 The quiet green-eyed blonde - pals around Pat - has clothes, clothes, and more clothes - Little Miss Tap Dancer - which will it be Colleen, College or Business school?



**PAULA JOAN DeBARGE**  
 Office Girl 4; Junior Red Cross 1, 2, 3, 4; Glee Club 1, 2, 3, 4; Debating Club 4; Driver Education & Training 3, 4; Booster Drive 1, 2; United Drive 1, 3; Talent Show 1, 2, 4; A. A. Member 1, 2, 3, 4  
 Pert, efficient - a glee clubber - who's John? - haunts Miss Kavanagh - nurse's aid at St. John's - a future Florence Nightingale?



**JOAN LESLIE DECATUR**  
 Junior Red Cross 2, 3, 4; Glee Club 2, 3, 4; Driver Education & Training 3, 4; United Drive 3  
 "Joanie" - full of vim, vigor, and vitality - pal of Priscilla - has a million-dollar smile - future in nursing - success unquestioned.



**MURIEL RENEE DEERING**  
 Junior Red Cross, Secretary 4; Science Club 3, Program Chairman 4; Driver Education & Training 3, 4; Booster Drive 3; United Drive 3; A. A. Representative 2, 3, 4; Science Fair 3  
**DEERING HIGH SCHOOL**  
 Portland, Maine  
 Tennis 1, 2; Ski Club 1, 2; Red Cross Representative 2; Swimming 2  
 Calm, relaxed, pleasing - a winning smile - a competent worker - hopes for Faulkner Hospital and nursing.



**JAMES GARFIELD DELANEY**

Football Manager 2, 4; Junior Red Cross 1, 2, 3; Lamplighters 1, 2, 3, 4; Dramatic Club 2, 3, 4; Driver Education & Training 3, 4; Booster Drive 1, 4; A. A. Member 1  
 "Jim" - general all around handyman - mind always on cars - one of the dramatic club stage hands - interests held by Merrimac College, Culinary School of America, and the Navy - Good Luck, Jim, from C. H. S.



**JOAN ELLA DeSELLE**

Junior Red Cross 1, 2, 3, 4; Driver Education & Training 3; Booster Drive 1, 2; A. A. Member 1, 2  
*Joan DeSelle*  
 The stylish dresser personified - likes roller skating, dancing and summers at Hampton Beach - we predict a bright future for this energetic young girl.



**ELAINE MARIE DIONNE**

Intramural Sports 2; Junior Red Cross 1, 2, 3, Representative 4; Press Club 4; Dramatic Club 2, 3, 4; Glee Club 4; Driver Education & Training 3, 4; Booster Drive 1, 2, 4; United Drive 3; A. A. Member 1, 2; Dance Committee 4  
 Always gay - contagious laugh - one of the 'French Twist' girls - keeps Dillon's going - the world of business awaits you, Elaine.



**BARRY ROY DONALDSON**

Glee Club 1; Driver Education & Training 3; Booster Drive 1, 2, 4; Talent Show 1; A. A. Member 1, 2, 3, 4  
 Vegetarian, at the Purity - enviable curls - a devoted brother - Good luck in the future, Barry.



**DAVID ALLEN DIRUBBO**

Student Council 2; Junior Red Cross 1, 2, 3, 4; Glee Club 4; Driver Education & Training 3, 4; Booster Drive 2, 3; United Drive 1; Talent Show 1, Northeastern Music Festival 1, 2, 3, 4; A. A. Member 1, 2, Representative 3, 4; Band 1, 2, 3, 4; Dance Committee 2; Lamp Lighter 4; High School Store Manager 4  
 "Dave" - another Henry Ford maybe? - ready laugh adds flavor to our band - annual A. A. representative - pals with James and Robert - future in the world of cars.



**CARLYN LESLEY DITTMER**

Junior Red Cross 1, 2, 3, 4; Glee Club 2, 3, 4; Driver Education & Training 3; Booster Drive 3; United Drive 2; Talent Show 2; Northeastern Music Festival 1, 2, 3, 4; A. A. Member 1, 2, 3, 4; Band 1, 2, 3, 4  
 Yes, her name is spelled right - strikes up the bells in the band - marimba artist, also - bowling hobbist - would like to be a children's nurse.



**JOAN MARIE DONOGHUE**

Basketball 2, 4; Junior Red Cross 4; Press Club 3; Dramatic Club 3, 4; Science Club 2, 3; Driver Education & Training 3, 4; Science Fair 3  
 CHELSEA, MASSACHUSETTS  
 French Club 2; Drum & Bugle Corps 1; Glee Club 1, 2; St. Patrick's Play 1, 2  
 Tall and pleasant - an ardent participant in roller skating - interested in accounting and IBM's - the crystal ball forecasts business.



**JOHN CLARK DORSEY**

Basketball J.V. 3; Football 3, 4; Junior Red Cross 1, 2, 3, 4; Glee Club 4; Driver Education & Training 3; A. A. Member 2, 3, 4; Motto Committee 4  
 "Jack" - halfback Mighty Mite - stands back and listens - serious about studies - Jeff's buddy - loves to schuss and slalom - another U. of Massachusetts man.



**EDWIN HENRY DRESCHER**

Junior Red Cross 1, 2, 3, 4; Glee Club 2, 4; Driver Education & Training 3; Booster Drive 2, 3; United Drive 2, 3; Talent Show 2; Northeastern Music Festival 2; A. A. Member 1, 2, 3  
 "Ed" - never wore his class ring - of Purity stock - loves quiet, huh? - industrious - smart and KNOWLES a lot - sincere - friendly - success in the engineering field.



**PATRICIA ANN DUNLAVEY**

Intramural Sports 2, 3; Junior Red Cross 1, Representative 2, 3, 4; Dramatic Club 2, 3, 4; Driver Education & Training 3, 4; Booster Drive 1, 2, 3; United Drive 1, 2, 3; A. A. member 1, 2, 3, 4.  
 "Pat" quiet, but full of fun - efficient worker - faithful correspondent of Gene - "What are the three little words?"



**SANDRA FRENCH DUPEE**

Class Officer: President 1; Student Council 1; Junior Red Cross 1, 2, 3, 4; Dramatic Club 2, 3, 4; Glee Club 1, 2, 3; Driver Education & Training 3; Booster Drive 2; Talent Show 1, 2; A. A. Member 3, 4; Representative 1, 2; Planning Committee 4  
 "Sandy" - a pretty blue-eyed blonde - happy-go-lucky - seldom seen without Barbie - never without a date - a future teacher of America.



**GERALDINE PAM EATON**

Intramural Sports 2; Junior Red Cross 2, Representative 4; Dramatic Club 4; Driver Education & Training 3, 4; Booster Drive 1, 2; United Drive 2, 3; A. A. Member 1, 2  
 "Gerry" - love those curls - thrives on conversation - party-minded - still going with HIM - will keep things popping wherever she goes.



**JOANNE ELLEN EGAN**

Basketball 4; Field Hockey 4; Field Hockey J.V. 3; Intramural Sports 2; Junior Red Cross 1, Representative 2, 3, 4; Dramatic Club 2, 3, 4; Driver Education & Training 3; Booster Drive 1, 2, 3, 4; A. A. Member 1, 2, 3, 4; United Drive 2, 3, 4; Softball 2, 3  
 Able hockey player - pals with Joan - always smiling and cheerful - calmly awaits her successes.



**RONALD EDWARD ENGEL**

Yearbook Staff 4; Junior Red Cross 1, 2, 3, 4; Lamplighters 4; Math Club 3; Science Club 2, 3, 4; Driver Education & Training 3; United Drive 2, 3; Talent Show 4; Open House Usher 3; Science Fair 2, 3, 4; Dance Committee 4  
 "Ronny" - personable, ambitious - Page's soda salesman - C.H.S. electronics technician - record collector - jazz specialist - will study engineering - success assured.



**DOUGLAS FRANCIS ENO**

Basketball 3, 4; Basketball J.V. 2; Baseball 2, 3, Co-captain 4; Football 3, 4; Football J. V. 2; Junior Red Cross 1, 2, 3, 4; Driver Education & Training 4; Booster Drive 3; United Drive 2; A. A. Member 1, 2, 3; Color Committee 4  
 "Doug" - flat-footed halfback - three letter man - also a four-footed one for a while - baseball co-captain - walks with Nancy C. - hopes to be a farmer after college or service.



**MARY JOSEPHINE FISHER**

National Honor Society 3, 4; Junior Red Cross 1, 2, 3; Press Club 4; Dramatic Club 2, 3, 4; Science Club 3, 4; Driver Education & Training 3; Graduation & Reception Usher 3; Booster Drive 3; United Drive 2, 3; Open House Usher 3; A. A. Member 1, 2, 3, 4; Science Fair 3  
 Has a way with words - a companion for Carlyn - likes to play tricks on Trudy in gym - "Don't do that" - will make an efficient teacher.



**CLARENCE GERALD FANNING**

Junior Red Cross 1, 2, 3; Driver Education & Training 3, 4  
 "Gerry" - quiet man from South - first love, cars - races No. 731 at Hudson - future in mechanics - "Anchors Aweigh" this fall.



**DAVID HICKS FARROW**

Track 4; Football 4; Junior Red Cross 1, 2, 3, 4; Glee Club 4; Driver Education & Training 3; Booster Drive 1, 2; United Drive 2, 3; A. A. Member 1, 2, 3, 4; Science Fair 1  
 "Dave" - "Did you hear about . . . ?" - works hard on the gridiron - labors long at Bill's Food Store - ready and willing to put talk before homework - to follow a L. T. I. tradition.



**MICHELE MARIE FOSTER**

Dramatic Club 3; Glee Club 4; Booster Drive 2, 3; United Drive 2, 3; A. A. Member 1, 2, 3, 4; Finance Committee 4  
 "Mike" - modest money collector - just what is that haircut called? - despite her mild manner, mixes in mischief and jabbars like a magpie - a future home economist or artist, which?



**DIANE ELOISE FRENCH**

National Honor Society 3, 4; Dramatic Club 3, 4; Glee Club 1, 2, 3, 4; Driver Education & Training 3; Graduation & Reception Usher 3; United Drive 2, 3; Talent Show 1, 2, 3, 4; Northeastern Music Festival 2, 3, 4; Open House Usher 3; Twirlers 2, 3, 4  
 An active twirler and a gleeful singer - a member of the Rainbow - faithful to Bill - a pigeon fancier - a two-year college ahead.



**CAROLE ANN GIBBONS**

Intramural Sports 2, 3; Office Girl 4; Junior Red Cross 4; Booster Drive 2; United Drive 3; A. A. Member 1; Dance Committee 3, 4  
 Sparkling blue eyes - always neat, quiet and friendly - faithful to Kostie - enjoys dancing - willing artist for anyone - an asset to any office.

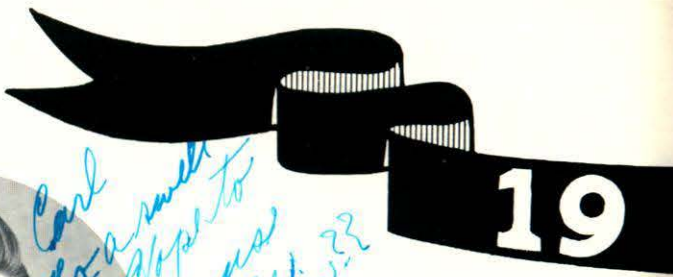




**JAMES KENNETH GIFFORD**  
 "Jim" - does not waste words - either laughing, or studying - shy when it comes to girls - "Hey wait for me!" - in business, he will achieve success!



**BURTON ALLAN GOULD**  
 Basketball J. V. 1; Science Club 2, 3; Driver Education & Training 3; Booster Drive 1, 2, 3; Talent Show 1, 2; Northeastern Music Festival 1, 2, 3; A. A. Member 1, 2, 3, 4; Science Fair 2; Band 1, 2, 3  
 "Allan" - makes frequent trips to Clermont - active at church - a coin collector - a Purity alumnus - another long-term band member - he will belong to Franklin Institute in September.

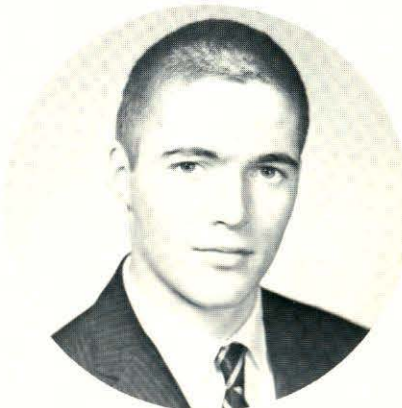


**JO-ANN CECILIA GRAVELLE**  
 Basketball 4; Basketball J.V. 1, 2, 3; Field Hockey 2, 3, 4; Field Hockey J.V. 1; Junior Red Cross 1, 2, 3, 4; Science Club 2; Glee Club 4; Driver Education & Training 3, 4; Booster Drive 1, 2, 3; A. A. Member 1, 2, 3, 4; Science Fair 2; Softball 1, 2, 3, 4  
 "Jo-Ann" - enjoys sports - Mr. Lynch's personal filing secretary - got her driver's license in a jiffy - will her 4H successes determine her future?

*Carl  
 go a week  
 guy. Hope to  
 see you in the  
 no more  
 Allan*



**ESTELLE MARIE GRONDINE**  
 Intramural Sports 2, 3; Office Girl 3, 4; Junior Red Cross 1, 2, 3; Glee Club 1, 2; Driver Education & Training 3; Booster Drive 3; United Drive 3; A. A. Member 1, Representative 2, 3, 4; Dance Committee 3; Prom Usher 1  
 "Estelle" - quiet, until known - loves convertibles and pizza - "Beware, lady driver!" - success in business awaits this amiable Miss.



**VAUGHN EDWARD HADLEY**  
 Junior Red Cross 1, 2, 3, 4; Science Club 2, 3; President 4; Radio Club 4; Debating Club 4; Driver Education & Training 3; Science Fair 2, 3  
 "Onsk" to many - silent but profound - N.R.I. graduate - one of the electronics men - "the shadow knows" - sports car driver - aiming to L.T.I. to start a successful electronics career.



**GEORGE RAYMOND HAITHWAITE**  
 Yearbook Staff 4; Dramatic Club 4; Driver Education & Training 3  
 "Ray" - always smiling, even Monday morning - friendly - enjoys all facets of the theatre - music lover - likes Maine - after electrical engineering at L.T.I., he'll be off to sunnier shores.



**EDWARD FRANKLIN HALL**  
 Football 1, 2, 3, Co-captain 4; Glee Club 4; Driver Education & Training 4; A. A. Member 1, 2, 3, 4  
 "Eddie," the sportsman - mighty hunter - rugged football co-captain - Practice again, Coach?" - Nancy's man - will wear Navy blues this fall.

*Carl  
 We spent  
 twelve long years  
 together. Now we go  
 separate ways. I wish  
 you all the luck at L.I.C.  
 Ray*



**ANN ELIZABETH HANSEN**

Office Girl 3; Junior Red Cross 1, 2, 3, 4; Band Concert 3, 4; Dramatic Club 2, 3, 4; Glee Club 4; Driver Education & Training 3, 4; Booster Drive 1, 2, 3, 4; United Drive 2, 3; Talent Show 4; Northeastern Music Festival 3, 4; A. A. Member 1, 2, 3, 4; Twirlers 3, 4; Dance Committee 4  
 "Ann" - friendly with Elaine - C.H.S twirler - has a sunny disposition - "Have you seen Eddie?" - success will be hers at State Teachers.



**JUDITH ANN HARRINGTON**

Student Council 1, 2, 3, 4; Basketball 3, Co-captain 4; Basketball J.V. 1, 2; Field Hockey 1, 2, 3, 4; Intramural Sports 1, 2; Office Girl 4; Junior Red Cross 1, 2, 3, 4; Driver Education & Training 3; Booster Drive 1, 2, 3; United Drive 1, 2, 3, 4; Talent Show 4; Open House Usher 3, 4; A. A. Member 1, 3, 4; Representative 2; Dance Committee 1, 2, 3; Softball 1, 2  
 "Judy" - capable basketball co-captain - often bellows "Maur-e-e-en!" - the focus for Dave's attention - full of fun, and oh! those jokes - bound for Bentley.



**JANE LILLIAN HANSEN**

National Honor Society 3, 4; Yearbook Staff 4; Intramural Sports 3, 4; Office Girl 4; Junior Red Cross 1, 2, 3, 4; Dramatic Club 4; Glee Club 4; Driver Education & Training 3, 4; Graduation & Reception Usher 3, 4; Booster Drive 3; Open House Usher 3; A. A. Member 4

Jane, our Rainbow girl - Oh! those retreats - popular wherever she goes - neat, trim, never a hair out of place - a future lab technician.



**JOHN MICHAEL HART**

Booster Drive 1, 2, 3; A. A. Member 1, 2, 3, 4  
 "Mike" - sharp dresser - our local haberdasher, "who me?" - avid hockey enthusiast - who wanted to go to school anyway?

**BRUCE EDWARD HICKS**

Basketball J.V. 1, 2; Basketball 3; Football 1, 2; Booster Drive 1, 2; Talent Show 2; A. A. Member 1, 2, 3, 4  
 Deliberate and unhurried - has basketball in his blood - escorts Diane - paperhanger deluxe - Good luck in whatever you do.



**MARILYN JUNE HARPER**

Intramural Sports 2, 3; Office Girl 3, 4; Junior Red Cross 1, 2, 3; Representative 4; Driver Education & Training 3, 4; Booster Drive 1, 2, 3; United Drive 2, 3; Talent Show 4; A. A. Member 1, 2, 3, 4; Dance Committee 2, 3; Prom Usher 1  
 "Mally" - neat and trim - seldom without Estelle - "Anyone got anything to eat?" - has a mania for white convertibles - a future secretary.



**TIMOTHY JOHN HEHIR**

Student Council 2, 3, 4; Basketball 3, 4; Basketball J.V. 1, 2; Football 3, 4; Football J.V. 2; Booster Drive 2, 3; United Drive 2, 3; Talent Show 4; Open House Usher 3, 4; A. A. Member 1, 2, 3, 4; Motto Committee 4; Dance Committee 2, 3, 4  
 "Tim" - talkative and then some - interests in Maureen - sports minded - active in Student Council - B. C. or Holy Cross next year?





**NANCY DELL HOLMES**

Class Marshal 3; All State Orchestra 2; National Honor Society 3; Softball 2, 3; Field Hockey J.V. 3; Press Club 3; Science Club 2, 3; Band & Glee Club 2; Driver Education & Training 3; Graduation & Reception Usher 3; United Drive 3; A. A. Member 2, 3; Science Fair 2, 3  
Talented cellist at state competitions - former "Texan" - award winner at the Science Fair - active 4H'er - transferred to Wellesley with honors after junior year - Good luck, Nancy, from all of us.



**RONALD MICHAEL HORAN**

Lamplighters 4; Science Club 4; Glee Club 4; Radio Club 4; Talent Show 4; Science Fair 4; Band 4  
LYNN CLASSICAL HIGH SCHOOL  
Football J.V. 2; Track 1  
"Ronny" - always friendly - seldom quiet - strums guitar - natural mechanic - headed for California - future in industry.



**CAROLYN ESTHER HORSTMAN**  
STRATFORD HIGH  
Stratford, Connecticut

Basketball 1, 2, 3; Driver Education & Training 3  
"Carolyn" - quiet and reserved - never a hair out of place - came well recommended from Stratford, Connecticut - on to college for Carolyn, we hope.



**RICHARD WARREN HOXIE**

Band 1, 2, 3, 4; Glee Club 4  
Faithful musician - takes to tuba totting - famed for changing cars - skilled in mechanical drawing - reserved for the Navy.



**CAROLYN JEAN HUNDT**

Junior Red Cross 3, 4; Glee Club 3, 4; Debating Club 4; Driver Education & Training 3

WIESBADEN, GERMANY

Pep Club 1, 2; Dramatic Club 2; Red Cross 1, 2; Student Council 1, 2; Teen Council Representative 2

ARLINGTON, TEXAS

Photography Club 3  
"Jean" - personality plus - a much traveled young lady - welcome addition to our school - Judy's buddy - neat as a pin - constant companion of Fred - future in nursing.

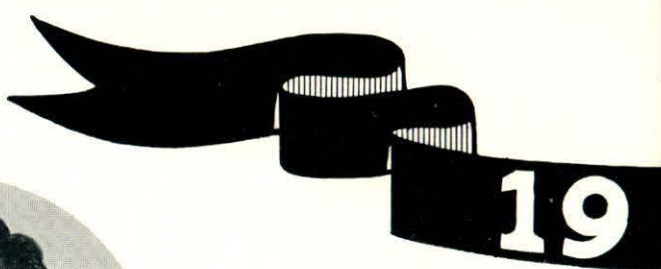
**FRANCES ANN KNEELAND**

Intramural Sports 2, 3; Office Girl 4; Junior Red Cross 2, 3, 4; Glee Club 1, 2; Driver Education & Training 3, 4; Booster Drive 3; United Drive 2, 3; A. A. Member 1, 2, 3; Band Concert 1, 2; Dance Committee 3, 4; Prom Usher 1  
"Frannie" - "Had your hair cut again?" - makes a lot of noise for such a little girl - ever-faithful to Mollie - will be an efficient office girl for somebody.



**ARTHUR STUART KIRK**

Football 1; Football J.V. 1; Glee Club 4; Driver Education & Training 3; Booster Drive 1, 2, 3; A. A. Member 2, 3; Band 1, 2, 3, 4; Crafts 4  
"Art" - big, bluff, and brawny - drives anything from a Renault to a truck - a Princeton marketman - Cal. Tech, his goal!





#### JUDITH ELAINE KNOWLES

Glee Club 2, 3, 4; Driver Education & Training 3; United Drive 1, 3; Talent Show 2, 4; Northeastern Music Festival 2, 3, 4; A. A. Member 1, 2, 3, 4; Twirlers 2, 3, 4; Dance Committee 4

"Judy" - makes the baton twirlers click - slightly attracted to a guy named Ed - loves to do everything - plans a secretarial job and then?



#### DAVID NORMAN KYDD

Yearbook Staff 4; Football 2, 3, Co-captain 4; Intramural Sports 1, 2, 3, 4; Junior Red Cross 1, 2, 3, 4; Booster Drive 2, 3; United Drive 2, 3; Talent Show 4; A. A. Representative 1, 2, 3, 4; Dance Committee 1, 2, 3

"Dave" - a versatile football player - one of our three popular co-captains - catches a word with Judy as often as possible - which branch of the Service will it be? Success!



#### CHARLES ALAN LAUGHTON

Junior Red Cross 1, 2, 3, 4; Math Club 3; Debating Club 4; Driver Education & Training 3; United Drive 1, 2, 3; A. A. Member 1, 2

"Cheerful Charlie" - friendly - garrulous - sharp - pertinent and not-so-pertinent interrupter - debator - introduced sport cars to C.H.S. - hunter - DeMolay - agriculture at Cornell.



#### BARBARA LEBEDZINSKI

National Honor Society 3, 4; Basketball 3, J.V. 2; Field Hockey 3; Press Club 3, President 4; Dramatic Club 2, 3, 4; Science Club 2, 3, Secretary 4; Glee Club 2; Graduation & Reception Usher 3; Booster Drive 3, 4; Science Fair 2, 3, 4; Finance Committee 4; Softball 1, 2, 3

Pert, pleasant, and popular - busy! with dramatics, sports, the science club, and tending Simonian's Solarium - Pre-Med intentions.



#### KAREN LEE

Cheerleaders 3, Co-captain 4; Intramural Sports 2, 3; Office Girl 3; Junior Red Cross 1, 2, 3; Dramatic Club Vice-President 4; Booster Drive 2, 3; Talent Show 4; A. A. Member 1, 2; Dance Committee 3, 4; Softball 1, 2, 3, 4

Witty co-captain of the cheerleaders - a cute combination of mischief and innocence - always dreaming - she'll be someone's "super" secretary.



#### EUNICE ALICE LEMASURIER

National Honor Society 3, 4; Yearbook Staff 4; Junior Red Cross 1, 2, 3, Representative 4; Press Club 4; Dramatic Club 2; Science Club 2, 4, Secretary 3; Driver Education & Training 3; Graduation & Reception Usher 3; United Drive 3; Talent Show 2; Open House Usher 3; A. A. Member 1, 2, 3; Science Fair 2, 3; Dance Committee 1, 3

"Eunice" - neat and sweet - "Mr Hicks, would you please go over that again?" - everyone's pal - "For PETE'S sake!" - a cute Miss for University of Mass.

#### ELAINE PHYLLIS LITTLEFIELD

Junior Red Cross 2, 4, Representative 3; Dramatic Club 2, 3, 4; Glee Club 3, 4; Driver Education & Training 3; Booster Drive 2; United Drive 2, 3; Talent Show 4; A. A. Member 2, 3, 4; Planning Committee 4; Band Concert 3, 4

"Elaine" - pert and pretty - Waltham sent her to us - Bob's pride and joy - which will it be, Elaine, Lowell General or the Children's Hospital?





**JAMES STUART LOGAN**  
 Math Club 3; Driver Education & Training 4;  
 A. A. Member 2, 3, 4  
 Quiet until known - friends with Bob  
 - always ready to enjoy a good laugh -  
 will meet success.



**ROBERT CLYDE MacKINNON**  
 Basketball 4; Basketball J.V. 2; Football 2;  
 Junior Red Cross 1, 2, 3, 4; Booster Drive 3;  
 A. A. Member 1, 2, 3, 4  
 "Bob" - talkative, friendly, and well-  
 liked - a conscientious worker - "Any-  
 one for a round of golf?" - proud of  
 his license - great addition to any  
 college, Good Luck!



**GEORGE STOREY MacLAUGHLAN**  
 Football 3; Science Club 4; Glee Club 4;  
 Radio Club 4; Driver Education & Training  
 4; A. A. Member 4; Band 4  
 ADDISON, MAINE  
 Basketball 1, 2; Baseball 1, 2  
 Master electrician and machinist -  
 "May I borrow 50¢?" - punches time  
 at the Purity - after attending Went-  
 worth, plans future as electronic engi-  
 neer - Best of Luck!



**ROSE MARIE McQUESTEN**  
 Junior Red Cross 2, 4; Glee Club 1, 2; Driver  
 Education & Training 3; United Drive 3; Tal-  
 ent Show 4; Softball 2; Art Club 2, 4  
 "Rose" - quiet and reserved - able  
 worker - clever artist and skilled print-  
 er - interested in a T-Bird - wedding  
 bells in September.



**DAVID CONRAD MAJEAU**  
 Science Club 2; Glee Club 4; Driver Educa-  
 tion 3; Booster Drive 1, 2, 3; Talent Show 1;  
 A. A. Member 1, 2, 3; Science Fair 2; Art  
 3, 4  
 "Dave" - master mechanic? - loves  
 fishing and hunting - able to smash  
 up car in unpopular places - day-  
 dreams about "GIRLS." - will make  
 Wentworth his headquarters this fall.



**LOUISE MANAHAN**  
 National Honor Society 3, 4; Yearbook Staff  
 4; Intramural Sports 2, 3, 4; Office Girl 4;  
 Driver Education & Training 3; Graduation &  
 Reception Usher 3; Booster Drive 3; Open  
 House Usher 3, 4  
 "Louise" - fun anywhere, at any time  
 - one of many - enviable smile - typing  
 whiz - drives a big, black limousine -  
 she will keep the business world hop-  
 ping.



**RICHARD EDMUND MANSEAU**  
 Band 1, 2, 3; Northeastern Music Festival 1,  
 2, 3  
 "Rich" - the boy with the "crazy"  
 haircut - that blue Mercury really  
 sounds great? - a probable student in  
 Uncle Sam's school of learning.



**DAVID ALAN MARSHALL**

"Dave" - devout C.A.P. man - loves to fly - keeps Page's running - genial - hunting preferred - career assured in either the Air Corps or engineering school.



**LOUIS JOSEPH MASSON**

Basketball Manager 3, 4; Football 3, 4; Intramural Sports 2, 3; Lamplighters 3, 4; Dramatic Club 4; Booster Drive 2, 3; United Drive 2, 3; Talent Show 2, 4; A. A. Member 1, 2, 3; Planning Committee 4; Dance Committee 4

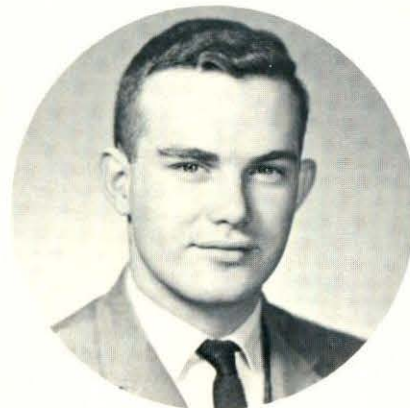
"Louie" - "I gotta see what the boys are doin'" - prefers a blonde sophomore - oh! those dimples! - the "late" Mr. Masson - on the ladder to success.



**RAYMOND PAUL McENANEY**

Basketball J.V. 3; Track, Co-captain 4; Football J. V. 3; Dramatic Club 3, 4; Booster Drive 2, 3; Talent Show 2; A. A. Member 1, Representative 2, 3, 4; Dance Committee 3, 4

"Ray" - co-captain of the track team - where there's Ray, there's Martha - beachcomber at Hampton - business college will prepare him for the business world.



**RONALD F. McSHEEHY**

Dramatic Club 2, 3, 4; Math Club 3; Science Club 1, 2; Debating Club 4; Driver Education & Training 4; Booster Drive 2; United Drive 2, 3; A. A. Member 1, 2, 3

"Ronnie" - finds more mischief than most, but very competent when quiet - a willing worker, especially in dramatics - are you or are you not going to be a doctor?



**WAYNE ANTHONY MEDEIROS**

Baseball 3, 4; Student Council Store, Sales Manager 4

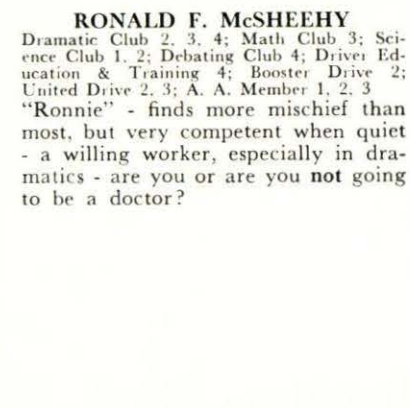
"Did you do your homework?" - shy with the fairer ones - should go somewhere with those wonderful bookkeeping figures - our future C.P.A.



**GERTRUDE MARY MORRIS**

National Honor Society 3, 4; Yearbook Staff 4; Office Girl 4; Science Club 2, 3, 4; Driver Education & Training 4; Graduation & Reception Usher 3; Open House Usher 3, 4; A. A. Member 2, 3, 4; Science Fair 2, 3, 4

"Trudy" - bubbles with ideas - a blithe spirit - a faithful French student - a "Merit Scholar" - an excellent roller-skater - a capable pharmacist of tomorrow.



**ROBERTA NANCY MORTALI**

Junior Red Cross 1, 2, 3, 4; Dramatic Club 2, 3; Glee Club 3, 4; Driver Education & Training 3, 4; United Drive 3; Talent Show 2, 4; Northeastern Music Festival 3, 4; A. A. Member 1, 2, 3, 4; Twirlers 3, 4; Dance Committee 4; Band Concert 3, 4

"Bobby" - loquacious, but lady-like - a waitress at Skip's - an active baton twirler - her goal: a lady in white at Lowell General.





**BARBARANN NIEMASZYK**

Junior Red Cross 1, 2, 4; Representative 3; Science Club 2, 3, 4; Glee Club 3, 4; Driver Education & Training 3, 4; Booster Drive 3; Talent Show 2, 4; Northeastern Music Festival 2, 3, 4; A. A. Member 1, 2, 3, 4; Science Fair 2, 3, 4; Twirlers 1, 2, 3, Captain 4; Band Concert 2, 3, 4; Dance Committee 4; Christmas Assembly 3, 4

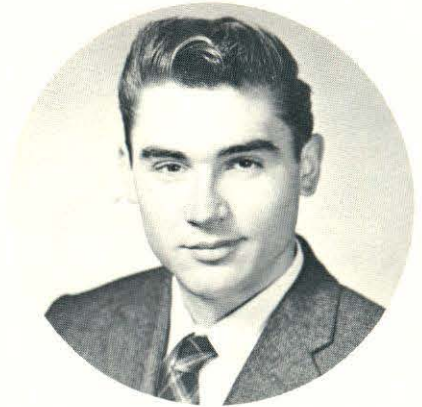
"Barbie" - leads twirlers in fancy routines - another struggling physics student - Pris and Barbie, twirlers de luxe - "Get in line, girls!" - a competent lab technician or dental hygienist.



**RALPH BRYANT NOLET, JR.**

Basketball J.V. 2; Football 3; Football J. V. 1, 2; Booster Drive 2; United Drive 2; A. A. Member 1, 2, 3, 4

Loves sports of all kinds - one of the Purity boys - "May I see theorem ten?" - drives a hot Chevy - plans to be teacher-coach or own a business.



**JOSEPH CHARLES OCZKOWSKI**  
Driver Education & Training 3

"Joe" - deliberate - can't be hurried - ears open, mouth closed - one of Roger Boyd's helpers - often with Don Anderson - future in one of Uncle Sam's Corps.



**GERALDINE SUSAN OLSEN**

Driver Education & Training 3, 4; Booster Drive 1; A. A. Member 1; Dance Committee 3, 4

"Jere" - lady-like and demure - Dave's girl all the way - spends summers at York Beach - future: will it be a paycheck or a report card?



**MAUREEN KATHERINE O'ROURKE**

National Honor Society 3, 4; Class Officer; Vice-President 2, 3; Field Hockey 4; Field Hockey J.V. 1, 2, 3; Intramural Sports 2; Junior Red Cross 1, 2, 3, 4; Driver Education & Training 3; Graduation & Reception Usher 3; Booster Drive 1, 2; United Drive 1, 2, 3; Open House Usher 3, 4; A. A. Member 1, 2, 3; A. A. Representative 4; Dance Committee 2; Color Committee 4

Postcards from California - loyal to her French - blushes easily - first one in the showers after gym - will make an efficient secretary.



**JOAN ELIZABETH O'SULLIVAN**

Student Council 3; Cheerleaders 3, Co-captain 4; Field Hockey J.V. 2; Office Girl 4; Junior Red Cross 1, 2, 3, 4; Driver Education & Training 3; Booster Drive 2; United Drive 2; Open House Usher 3; A. A. Member 1, 2, 3, 4; A. A. Representative 2; Dance Committee 2, 3

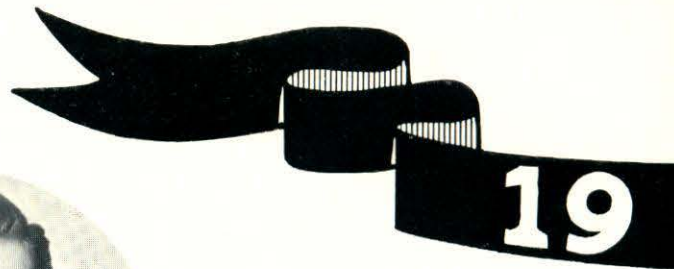
"Joannie" - pretty, peppy co-captain of the cheerleaders - chief chatter champ - waits patiently (?) for the week-ends - future secretary for the business world.



**EDWARD ARTHUR PERRY, JR.**

Football 3; Intramural Sports 1, 2; Junior Red Cross 1, 2, 3, 4; Glee Club 2; Booster Drive 2, 3; United Drive 2; A. A. Member 1, 2, 3, 4

"Eddie" - one of the boys from East - daily tête-à-tête with Ann - ability when necessary - future is what he makes it.



*"Carlton"  
to a real  
good math student  
and a real hot duck  
Hope to C.U. around  
Pete*



**LINNEA PETERSON**

National Honor Society 3, 4; Yearbook Staff 4; Class Officer: Secretary 1; Basketball 3, 4; Basketball J. V. 2; Field Hockey 1, 2, 3, Co-captain 4; Office Girl 3, 4; Graduation & Reception 3; Booster Drive 3, 4; United Drive 3; Talent Show 1, 2, 4; Open House Usher 3, 4; A. A. Member 1, 2, 3, 4  
Ever well-groomed and smiling - the essence of efficiency - skilled basketball player - lover of all sports - will develop talents at Salem Teachers College.



**THOMASINA LOUISE PHELPS**

Intramural Sports 2, 3; Junior Red Cross 3; Driver Education & Training 3; Booster Drive 1, 2; United Drive 1; A. A. Member 1, 2, 4; Representative 3; Dance Committee 2, 3, 4; Talent Show Usher 4  
"Tomi" - bubbles with vitality - "But, Miss Maynard!" - Beware! woman driver - pals around with Maureen - Chandler School awaits "Tomi."



**PETER CLARK PICKEN**

Baseball 3, Co-captain 4; Junior Red Cross 1, 2, 3, 4; Dramatic Club 3; Driver Education & Training 3; United Drive 2; A. A. Member 1, 3, 4  
"Pete" - a good listener - conservative in class - a golfer of promise - "But, Mr. LeClere!" - always driving a different car - a future full of promise.



**MARY LOUISE PIGEON**

Basketball 3, 4; Basketball J.V. 2; Field Hockey 2, 3, Co-captain 4; Junior Red Cross 2, 3, 4; Driver Education & Training 3; Booster Drive 2, 3; United Drive 3; Talent Show 4; A. A. Member 1, 2, 3, 4; Dance Committee 2; Softball 3, 4  
Vim, vigor, vitality, plus - able co-captain of our hockey team - morning conferences in the corridor with Barbie and Sandy - future lady-in-white.



**PATRICIA LOUISE POPE**

Student Council, Corresponding Secretary 4; Junior Red Cross 2, Representative 3, 4; Dramatic Club 2, President 3, Treasurer 4; Science Club 2; Driver Education & Training 3; Booster Drive 2, 3; United Drive 2, 3; Talent Show 2, 4; A. A. Member 1, 2, 3, 4; Science Fair 2  
"Pat" - pert, pretty, popular - mania for dancing - extensive wardrobe - "Ooooh, guess what!" - Lowell State, we give you Pat!



**ERNEST ALBERT POULIOT**

Lamplighters 2; Driver Education & Training 3, 4; Booster Drive 2  
"Ernie" - fisherman and hunter - an attendant at Keith's dances - popular candid camera man - woodworking his art - will carve his mark in the world.

**SALLY ANN PRESCKA**

Office Girl 4; Dramatic Club 3; Booster Drive 3; A. A. Member 1, 2, 3, 4  
Always a cheerful smile - plenty of chit-chat - keeps life from being dull in North - just plain nice and deserves a future to match at Chandler.







**DENNIS JOSEPH READY**  
Lamplighters 3; Math Club 3; Driver Education & Training 3; A. A. Member 2  
"Ready," willing, and able - always good natured - a hard worker at the Purity - soon will be found at Lowell Tech.



**JOHN EDWARD REDICAN**  
Dramatic Club, President 4; Glee Club 4; Dance Committee 4  
CONCORD HIGH SCHOOL  
Glee Club 1; Track 1; Football 1, 2, 3  
"Red" - a ready joker - specializes in English - a former "Minute Man" - pumps gas at Ken's - leads the Dramatic Club - U. S. Marine bound.



**DORIS ELAINE REID**  
National Honor Society 3, 4; Yearbook Staff 4; Intramural Sports 2, 3, 4; Office Girl 4; Junior Red Cross 4; Driver Education & Training 3; Graduation & Reception Usher 3; Open House Usher 3, 4  
A very quiet yet astute person - enjoys a good joke - loves lunchtime - "Gee, I hope I pass this test." - looks to Liberty Mutual for a promising future.



**SARA LOUISE REMICK**  
Field Hockey 4, J.V. 3; Dramatic Club 2, 3; Glee Club 1, 2, 3, 4; Driver Education & Training 3; Booster & United Drives 2, 3; Talent Show 1, 2, 3; Northeastern Music Festival 1; A. A. Member 1, 2, 3; District Concert 3; All State Music Festival 3  
"Sally" - long, silky hair - enviable complexion - "I think I'm beginning to understand this Math." - lovely soprano voice - surely a success at Connecticut College for Women.



**DIANA LEE RICCIARDI**  
Field Hockey 4; Field Hockey J.V. 3; Junior Red Cross President 4; Dramatic Club 4; Driver Education & Training 3; Booster Drive 2, 4; United Drive 3, 4; Talent Show 4; A. A. Member 1, 2, 3, 4; Dance Committee 2  
Quiet in classes only - a steady interest - makes up the third musketeer with Carolyn and Linnea - will it be Fisher or Green Mountain?



**PAUL ALLEN RIESSLE**  
BEDFORD HIGH SCHOOL  
Driver Education & Training 2; Student Council 1  
Former Bedford man - works hard in construction - quiet - loves gymnastics - hunting enthusiast - drives a blue buggy with white trim - the Navy opens its door for you.



**LILLIAN EDA RONDEAU**  
National Honor Society 3, Treasurer 4; Yearbook Staff 4; Intramural Sports 2, 3; Office Girl 3; Junior Red Cross 1, 2; Debating Club 4; Driver Education & Training 3, 4; Graduation & Reception Usher 3; United Drive 2, 3; Open House Usher 3, 4  
"Snookie" - radiant smile for everyone - golden red hair - reliable worker - talented student - avid reader - Salem Teachers College, her goal.



#### JUDITH MARGARET ST. PIERRE

Yearbook Staff 4; Cheerleaders 3, 4; Junior Red Cross 1, 2, 3, 4; Dramatic Club 3, Secretary 4; Science Club 2, 4; Driver Education & Training 3; Booster Drive 3, 4; United Drive 3; Talent Show 2; A. A. Member 1, 2, 3, 4; Science Fair 2, 4; Planning Committee 4; Dance Committee 4

"Judy" - cute, petite, and peppy - a snappy cheerleader - Bev's chum - chauffeurs the gang in "Elizabeth" - you'll find her heart in Lowell - eyes toward Massachusetts General or Burbank.



#### DAVID RANDOLPH SARRE

Driver Education & Training 3

"Dave" - "Dennis, you committed a felony!" - lends helping hand with the luggage at father's store - doesn't watch for cars when backing up - which will it be, B. U. or Lowell Tech.?



#### MARTHA JEAN SHAY

Yearbook Staff 4; Cheerleaders 4; Field Hockey J. V. 2, 3; Junior Red Cross 1, 2; Representative 3, 4; Dramatic Club 3, 4; Glee Club 1; Driver Education & Training 3, 4; Booster Drive 1, 2, 3, 4; Talent Show 2; A. A. Member 1, 2, 3, 4; Dance Committee 3, 4

A petite and peppy cheerleader - plots with Karen - "Hey, do we have practice today?" - looks for Ray - a college gal to be.



#### JOHN SEWARD SOUTHWICK

Intramural Sports 3, 4; Math Club 3; Driver Education & Training 3; A. A. Member 3, 4; Dance Committee 3

#### DUMONT HIGH SCHOOL

#### DUMONT, NEW JERSEY

Intramural Sports 1, 2; Dance Committee 1, 2; S. O. Drive 1, 2

Handsome addition from New Jersey - tall, blond, and blue-eyed - bombs in a cool green Ford - best of luck in future years.

#### JOSEPH JEROME SPINAZOLA

Basketball 3, Captain 4; Basketball J.V. 2; Football 4; Football J. V. 2.

"Spin" - captain of basketball team - agile forward - part-time upholsterer - idolizes Mr. Hicks - a ready grin - pheasant hunter - college, industry or Armed Forces, "Spin"?



#### GWENDOLYN FAY SPINAZOLA

Yearbook Staff 4; Office Girl 4; Junior Red Cross 2, 3, 4; Glee Club 1; Driver Education & Training 3; Booster Drive 2, 3; A. A. Member 1, 2; A. A. Representative 2, 4; Dance Committee 3, 4

"Gwen" - sweet, petite, neat - fingers on typewriter, fleet, accurate, well-poised - "Kevey" in mind, but future undecided.



#### BEVERLY ANN SILVA

Yearbook Staff 4; Junior Red Cross 1, 2, 3; Vice-President 4; Dramatic Club 3, 4; Math Club 2; Science Club 2, 3, 4; Driver Education & Training 3, 4; Booster Drive 4; United Drive 3, 4; Science Fair 2, 3, 4; Dance Committee 3; Color Committee 4

"Bev." - a smile for everyone - seen travelling the corridors during sixth period - "Have you done your physics?" - a petite future teacher.





**JAMES SCOTT STAMP**

Football 3, 4; Football J. V. 1; Lamplighters 1, 2, Second Vice-President 3, Vice-President 4; Driver Education & Training 4; Booster Drive 2, 3; Talent Show 2; A. A. Representative 4

"Scotty" - full of wisecracks - girl-conscious - white '58 Chevy convertible is apple of his eye - second Alan Ameche - has a constant Buddy - college bound.



**BEVERLY JANE STEARNS**

Glee Club 3, 4; Band 3; Booster Drive 3  
MOODY SCHOOL  
Lowell, Massachusetts

Glee Club 1, 2; Talent Show 1, 2

"Bev" - a speaker for Democracy - an ardent French III student - a helping hand and a friendly smile - has the makin's for a successful life.



**JOSEPH ERNEST STAVELEY**

Basketball 3, 4; Basketball J.V. 2; Lamplighters 4; Glee Club 2, 4; Driver Education & Training 3; Booster Drive 2, 3; Talent Show 2; Northeastern Music Festival 2; A. A. Representative 3; Finance Committee 4; Dance Committee 1, 2, 3, 4

"Joe" - tall, talkative and bristle-top - ambles through corridors - wears a smile through his daily travels - willing worker - will make the goal he chooses!



**DANIEL JOSEPH SULLIVAN**

Basketball J. V. 2; Intramural Sports 3, 4; Junior Red Cross 1, 2, 3, 4; Lamplighters 1, 2, 4, Treasurer 3; Dramatic Club 2, 3, 4; Driver Education & Training 3, 4; A. A. Member 4

Tall, lean, and lethargic - a former marble champ - works well under great pressure - Bob's buddy - hopes for Lowell Tech.

**ROBERT JOHN THERIAULT**

Basketball J. V. 2; Driver Education & Training 4; Booster Drive 2

"Bob" - genial and generous with his car - entertaining conversationalist - one of the Cossette, Theriault, and Dirubbo trio - future on the highroad.



**PRISCILLA ESTELLE STAVELEY**

Glee Club 1, 2, 3, 4; Driver Education & Training 3; Booster Drive 1, 2; Talent Show 1, 2, 4; Northeastern Music Festival 2, 3, 4; A. A. Member 1, 2, 3, 4; A. A. Representative 1; Twirlers 2, 3; Drum Majorette 4

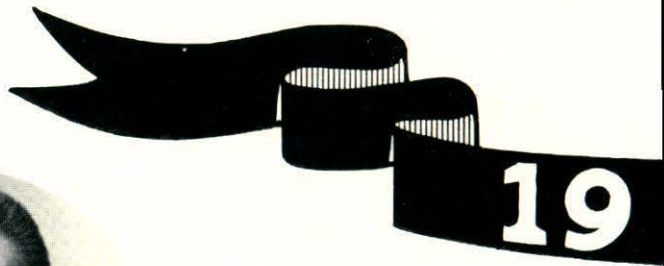
"Pris" - an alert and snappy drum majorette - always smiling - "Hi-a-ly" - plots with Barbie and Joanie - flashes Tom's ring - a worth while future of service: nursing.



**ROBERT ALFRED TALBOT**

Football 4  
JOHNSONVILLE HIGH SCHOOL  
Johnsonville, South Carolina  
Class Officer 1, 2; Football 2, 3; Baseball 1, 2, 3; Basketball 1, 2, 3

Our own "Johnny Reb" - set shot sinker - his personality matches his smile: bright and sunny - success assured at Lowell Tech.





**CONSTANCE ANN TOUSIGNANT**

National Honor Society 3; Vice-President 4; Field Hockey 2, 4; Field Hockey J. V. 1, 3; Math Club 2, 3; Glee Club 4; Driver Education & Training 3; Graduation & Reception Usher 3; Booster Drive 3; Open House Usher 3, 4; A. A. Member 4

"Connie" - cheerful, friendly, interesting - thinks of John - "Guess what?" - field hockey teammate - Perry Mason, your future secretary!



**LINDA LOCKWOOD VINECOMBE**

Field Hockey J. V. 3; Intramural Sports 1, 2, 3, 4; Junior Red Cross 3, 4; Lamplighters 4; Press Club 4; Dramatic Club 3; Glee Club 1, 2; Debating Club 4; Driver Education & Training 3, 4; Booster Drive 1, 2, 3; United Drive 1, 2, 3, 4; Talent Show 2; A. A. Member 1, 2

Always quiet and lady-like - conservative in class - willing to lend a hand whenever needed - a future full of opportunity.



**MARION EILEEN TOWER**

Junior Red Cross 4; Glee Club 1; Driver Education & Training 3, 4; Booster Drive 1, 2, 3; United Drive 3; Talent Show 1; A. A. Member 2, 3, 4

Efficient and conscientious - always a friendly "hello" - ready to help whenever needed - will be "tops" as a beautician.



**BARBARA MARIE WALKER**

Special Representative 4; Intramural Sports 3; Office Girl 4; Junior Red Cross 2, 3, 4; Driver Education & Training 3; Booster Drive 2, 3; United Drive 3; A. A. Member 1, 2, 3; Dance Committee 4

"Barb" - loquacious - laughs at anything - Stuarts #1 salesgirl - headed to Maine this summer with Fran - sixth period office girl - a future secretary.

**FRED ALVIN WETMORE**

"Fred" - always manages to look so energetic - can't seem to wake up until 9:00 or so - will he respond to his Uncle Sammy's call?



**ELIZABETH ANN VAIPAN**

National Honor Society 3, 4; Student Council: Treasurer 1, Recording Secretary 2, Vice-President 3, President 4; Junior Red Cross 1, 2, 3, 4; Dramatic Club 2; Driver Education & Training 3; Graduation & Reception Usher 3; United Drive 2, 3; Open House Usher 3, 4; A. A. Member 2, Rep. 1, 3; Class Committees 2, 3, 4

"Betty" - dreamy and reserved - Bill, her one and only - woman president of Student Council - bombs around in her father's car - college bound in September.



**CAROLYN JUNE WALKER**

Cheerleaders 3, 4; Intramural Sports 1, 2; Junior Red Cross 2, 4; Dramatic Club 4; Driver Education & Training 3, 4; Booster Drive 2, 3, 4; United Drive 2, 3; Talent Show 4; A. A. Member 1, 2, 3, 4; Dance Committee 2, 4

Wired for sound? definitely! after you know her - a conscientious student - a smile for everyone - best of luck at the Green Mountain.





**LOUISE BARRY WHALEN**  
 Junior Red Cross 4; Driver Education & Training 3; Booster Drive 1, 2, 3, 4; United Drive 3; A. A. Member 1, 2, 3, 4  
 Quiet, efficient, sincere - typist "par excellence" - C.H.S.'s champion equestrienne and horse fancier - chums with Doris and Marion - future cosmetologist.



**WARREN RICHARD WHITCOMB**  
 Glee Club 1, 2; A. A. Representative 1, 2  
**LAWRENCE ACADEMY**  
 Groton, Massachusetts  
 Yearbook 4; Track 4; Glee Club 3, 4; Debating 3, 4; Talent Show 3; Band 3, 4; Dance Committee 3  
 Brilliant, quick tempered, and vociferous - sports a curly crew cut - enfevered - sports a curly crew cut - enthusiastically interested in active sports - dapper dresser - eye on Middlebury College.



**ALVIN PAUL WOLCOTT**  
 Debating Club 4; Driver Education & Training 3; United Drive 2, 3  
 Quiet half of Worthley-Wolcott, Inc. - earnest student - enthusiastic member of Debating Team - meets a special girl everyday in the lunchroom - summer worker at Fort Devens - future forest ranger.



**ANDREW THOMAS WOLFGANG**  
 Basketball 4; Basketball J. V. 3; Baseball 2, 3, 4; Track 3; Driver Education & Training 3; A. A. Representative 3  
 "Andy" - bashful grin - big appetite - long, lean and lanky - agile basketball center - Latin minded? - President of St. Mary's C.Y.O. - Lowell State Teachers College in the fall.



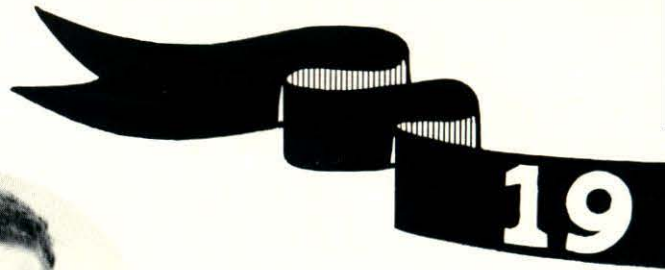
**KELVIN ARTHUR WORTHLEY**  
 National Honor Society 3; President 4; Yearbook Staff 4; Driver Education & Training 3; Graduation & Reception Usher 3; United Drive 2, 3; Open House Usher 3; A. A. Member 1, 2, 3; A. A. Representative 2  
 "Kel" - well mannered, good natured, energetic, likeable - Harvard. Book Prize winner - capable NHS prexy and church basketball star - will find his future in Maine or Indiana.



**JUDITH ANN ZABIEREK**  
 Junior Red Cross 2, 3, Treasurer 4; Dramatic Club 2, 3, 4; Glee Club 2; Driver Education & Training 3, 4; Booster Drive 2, 3, 4; United Drive 2, 3, 4; Talent Show 2; A. A. Member 1, 2, 3, 4  
 "Judy" - quiet little Miss? - don't be fooled - she chatters up a storm - Driver Ed genius - "Wasn't that French test awful?" - looking toward college.

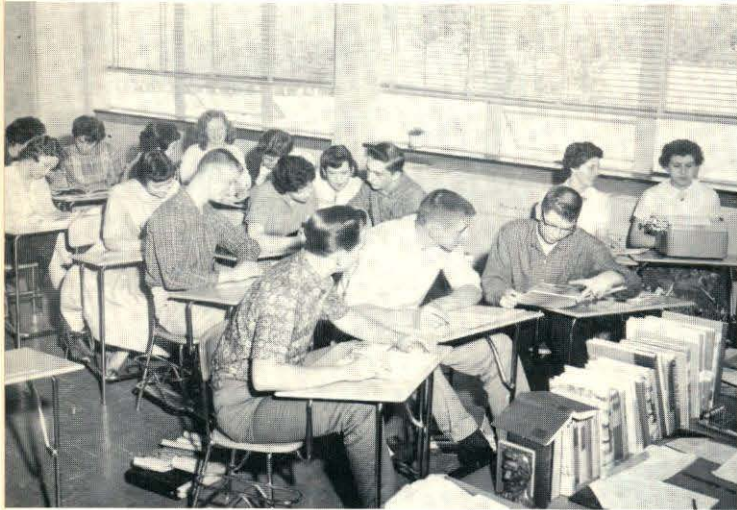


**PATRICIA ANN ZNOJ**  
 Intramural Sports 2, 3, 4; Junior Red Cross 2, 3, 4; Dramatic Club 2, 4; Glee Club 1, 2, 3, 4; Driver Education & Training 3, 4; United & Booster Drives 2, 4; Talent Show 1, 2; A. A. Member 2, 3, 4; Band Concert 1, 2; Christmas Assembly 1, 2, 3, 4  
 "Pat" - lively, cheerful, perpetual motion - famous giggle - "Guess what?" - sparks Glee Club - Junior Red Cross go-getter - nurses training at Lowell General Hospital her aim.



60





Ideas . . . plenty!



Not another thought . . .



In union inspiration!



Deadline . . . tomorrow!



made it . . .







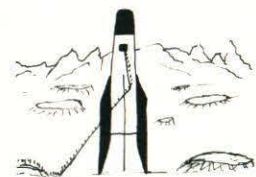
CLASS COLOR COMMITTEE



CLASS MOTTO COMMITTEE



CLASS TRIP COMMITTEE





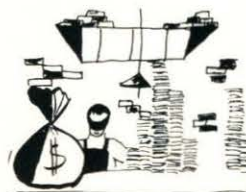
PROM COMMITTEE CHAIRMEN



CLASS BANQUET COMMITTEE



FINANCE COMMITTEE



PLANNING COMMITTEE



# Class Honors

## GRADUATION SPEAKERS

Barbara Lebedzinski  
Doris Elaine Reid  
Eunice Alice LeMasurier  
Jane Lillian Hansen  
Kathleen Mary Clark

## HIGH HONOR

Louise Manahan  
Kelvin Arthur Worthley  
Carolyn Jean Hundt

## HONOR

Gertrude Mary Morris  
Diane Eloise French  
Elizabeth Ann Vaipan  
Wendy Barbara Cooke  
Lillian Eda Rondeau  
Charles Alan Laughton  
Kathryn Suzanne Bernacki  
Constance Ann Tousignant  
Beverly Ann Silva  
Frederick Clifford Field, Jr.  
Sara Louise Remick  
Maureen Katherine O'Rourke  
Judith Margaret St. Pierre  
Linnea Peterson  
Mary Josephine Fisher

Carolyn June Walker  
Paul Allen Riessle  
Mary Louise Pigeon  
Karen Lee  
Ronald Francis McSheehy  
Carolyn Esther Horstman  
Wayne Anthony Medeiros  
Beverly June Stearns  
Patricia Louise Pope  
Warren Richard Whitcomb  
Walter Dyke  
Barbara Virginia Burkinshaw  
Ann-Elizabeth Hansen  
Alvin Paul Wolcott



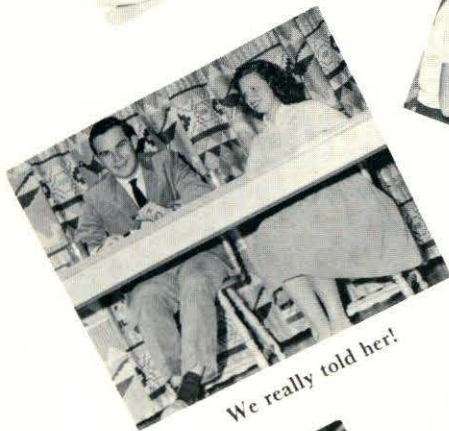
Best time of the day



Mid-terms tomorrow?



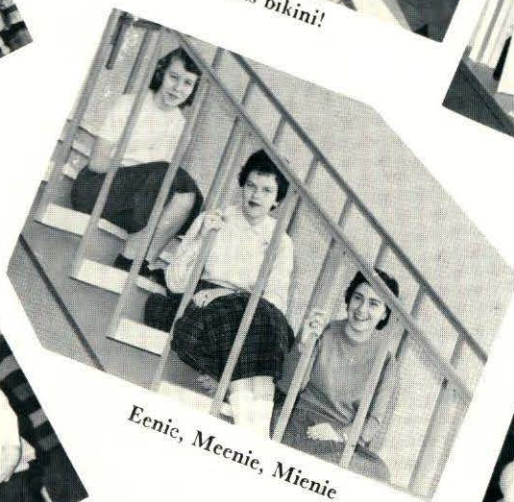
Wait till she sees this bikini!



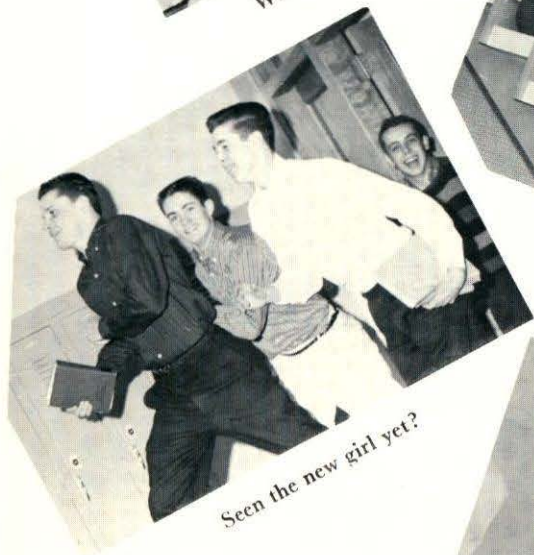
We really told her!



Let's call it "The Lion"



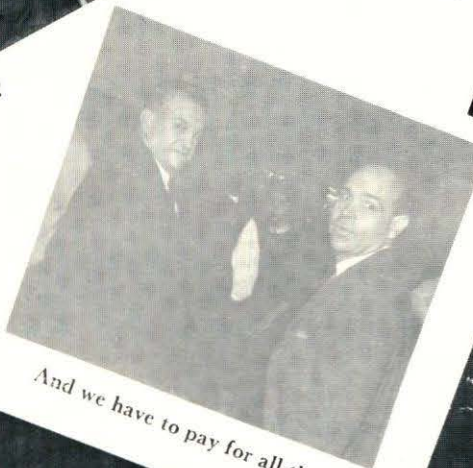
Eenie, Meenie, Mienie



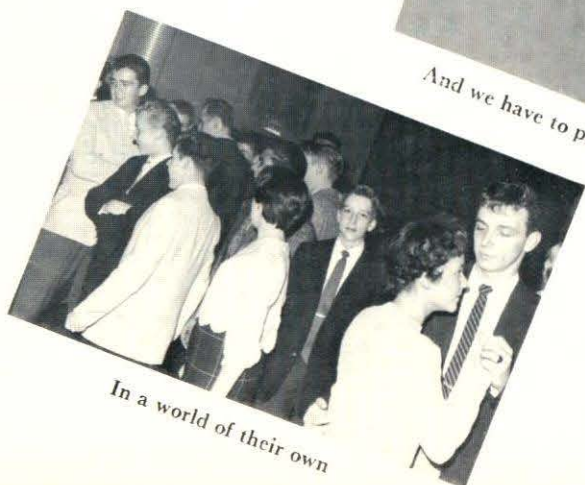
Seen the new girl yet?



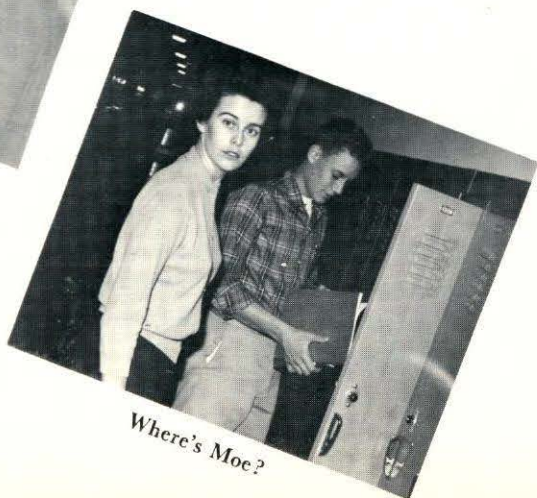
And there I was at 10,000 feet!



And we have to pay for all this?



In a world of their own



Where's Moe?

## *Special Awards Class of 1959*

The following is a list of special awards presented at the graduation exercises, June 8, 1959. Inasmuch as these awards were not made until the night of graduation, it was impossible to record them in the 1959 Yearbook.

THE HARVARD CLUB BOOK PRIZE — Presented by the Harvard Club of Boston to the best all around boy who stands high in scholarship and character in the college course of the Junior Class — "The Harvard Book" — by William Bentinck-Smith, awarded to KELVIN ARTHUR WORTHLEY.

GOOD CITIZENSHIP CERTIFICATE — Presented by the Daughters of the American Revolution for outstanding qualities of dependability, leadership, service and patriotism — awarded to ANNE MARIE ST. GERMAIN — who was selected by her classmates and teachers.

BAUSCH AND LOMB HONORARY SCIENCE AWARD — Given by the Bausch and Lomb Optical Co., for outstanding accomplishment in the study of scientific subjects — awarded to ROGER JOHN WELCH.

DUNIGAN AWARD — Given by the Chelmsford Teachers Association in loving memory of Hilda B. Dunigan, who taught in Chelmsford High School, from 1928 to 1934, for excellence in shorthand and typewriting as determined by competitive examination, won by — SANDRA ELLEN PIHL.

GAY AWARD — Given by the Chelmsford Teachers Association in loving memory of Dorothy F. Gay, who taught in Chelmsford High School, from 1932 to 1934, for excellence in French as determined by competitive examination, won by — ROGER THOMAS SWALLOW.

FOGG AWARD — Given by Chelmsford Teachers Association in loving memory of Donald H. Fogg, who taught in Chelmsford High School, from 1940 to 1943, to the highest ranking senior girl who has earned a letter in major sports, won by — LINDA CAROL LUPIEN.

KNIGHTLY AWARD — Given by the Chelmsford Teachers Association in loving memory of George R. Knightly who was a teacher and coach in Chelmsford High School, from 1930 to 1943, to the highest ranking senior boy who has earned a letter in major sports, won by — RICHARD ALAN LEE.

LARKIN AWARD — Given by Chelmsford Teachers Association in loving memory of Bernard P. Larkin, who was the band teacher in Chelmsford from 1943 to 1952, to the senior who has contributed the most to the music department in time and effort, won by — RICHARD WENTWORTH KIBERD.

DEXTER AWARD — Given by the Chelmsford Teachers Association in loving memory of Lilla M. Dexter, who taught in the Chelmsford Schools from 1942 to 1955, to the highest ranking senior going to a State Teachers College, won by — JOHN PATRICK BERGER.

HOYLE MEMORIAL AWARD — Given by the Chelmsford Booster Club in loving memory of Frank Hoyle, who was the President and organizer of the Boosters Club from 1951 to 1953, and awarded to the senior who has contributed the greatest service to the school during two or more years in high school, won by — SAMUEL IRA PARKS.

## *Special Awards Class of 1959*

GEORGAKAKOS AWARD — Given by the Chelmsford Teachers Association in loving memory of James Georgakakos who taught in Chelmsford High School from 1955-1957, for excellence in Social Studies, won by — SANDRA ELLEN PIHL.

WEBBER-FISKE TEACHER TRAINING SCHOLARSHIP — given by the Massachusetts Congress of Parents and Teachers — awarded to SUSAN MEDIN.

UNITED STATES HISTORY PRIZE — A medal presented by the American Legion Post No. 212, of Chelmsford Center, for excellency in United States History — awarded to — RUTH ELVERA LANE.

THE SOUTH CHELMSFORD GUN AND ROD CLUB SPORTSMANSHIP SCHOLARSHIP AWARD — Given by the South Chelmsford Gun and Rod Club to the boy athlete who best exemplifies the traits of a good sportsman over a period of two or more years of athletic competition, won by THOMAS JOSEPH TRAINOR.

THE SOUTH CHELMSFORD GUN AND ROD CLUB (AUXILIARY) SPORTSMANSHIP SCHOLARSHIP AWARD — Given by the South Chelmsford Gun and Rod Club (Auxiliary) to the girl athlete who best exemplifies the traits of good sportsmanship over a period of two or more years of athletic competition, won by — RUTH ANN HAYES.

THE JUDITH DRYDEN MEMORIAL CITIZENSHIP AWARD — Given by the South Chelmsford Village Improvement Association and awarded to the Senior who has exemplified in a most marked degree the characteristics of citizenship as evidenced by outstanding traits of social responsibility, maturity of judgement and integrity, won by — LINDA CAROL LUPIEN.

PURITY FOODS SCHOLARSHIP — A freshmen tuition grant of \$500 — awarded to the highest ranking senior who has the need of financial assistance, won by — ROBERT EARL WATT.

TOWN OF CHELMSFORD SCHOLARSHIP AWARDS — Given by the Town of Chelmsford Fund, Inc., to any worthy student whose education may be improved or facilitated by financial aid. These scholarships are granted in varying amounts not to exceed the tuition of the school or college which the applicant plans to attend. The selections are made from the applicants by a selection committee.

To be announced graduation night. STASIA FRANCES BLECHARCZYK, PRUDENCE BAXTER COOK, LINDA CAROL LUPIEN, ELAINE THERESA LEMIRE, JOHANNE ALICE TOWNSEND.

JAMES GEORGAKAKOS SCHOLARSHIP — given by the Georgakakos Family, in loving memory of James Georgakakos, formerly a teacher at Chelmsford High School, to a senior with a record of excellence in social studies and who shows most promise of success in Post-Secondary Education — won by — ROGER THOMAS SWALLOW.



### FRESHMEN

President—William Lucier  
 Vice-President—Barbara Gifford  
 Secretary—Barbara Montbleau  
 Treasurer—Kathleen Cullinan  
 Advisors—Christina A. Hanley  
 John W. Sargent



### SOPHOMORES

President—Allan Burne  
 Vice-President—Judith McCarthy  
 Secretary—Veronica Reeves  
 Treasurer—Judith Flanagan  
 Advisors—Dorothy K. Sexton  
 Edward J. Lynch



### JUNIORS

President—Robert Gleason  
 Vice-President—Linda Lee  
 Secretary—Janet Cali  
 Treasurer—Roberta Medin  
 Advisors—Margaret M. Kavanaugh  
 Ernest R. Shepard

### SENIORS

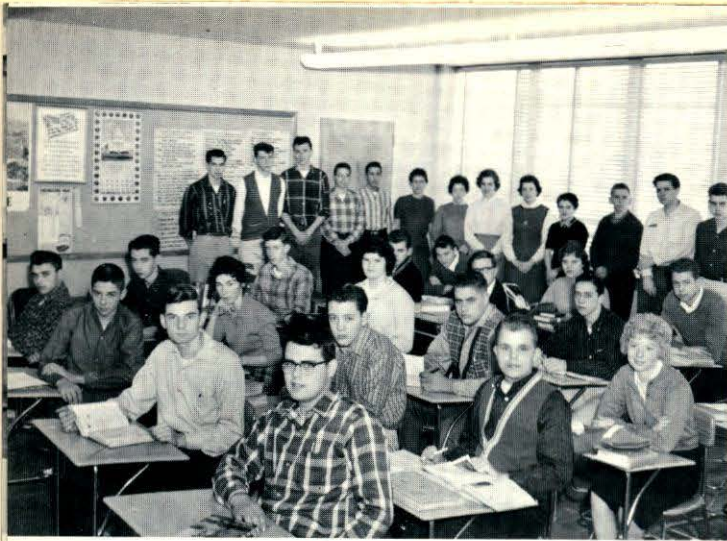
President—Frederick Field  
 Vice-President—Walter Dyke  
 Secretary—Mary Michalowski  
 Treasurer—Norma Bell  
 Advisors—Shirley H. Hardy  
 John J. Dunigan



# Undergrads







# Junior Class

## CLASS OF 1961

President — Robert Gleason

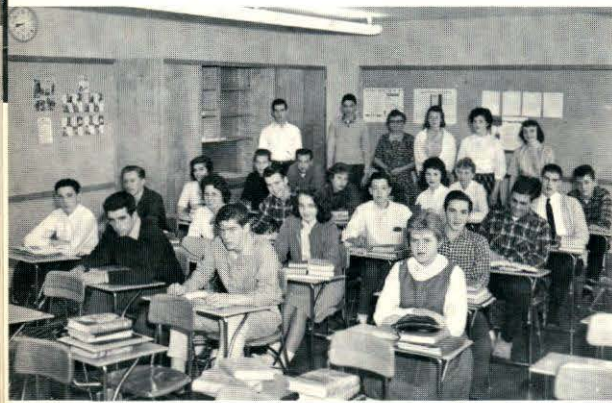
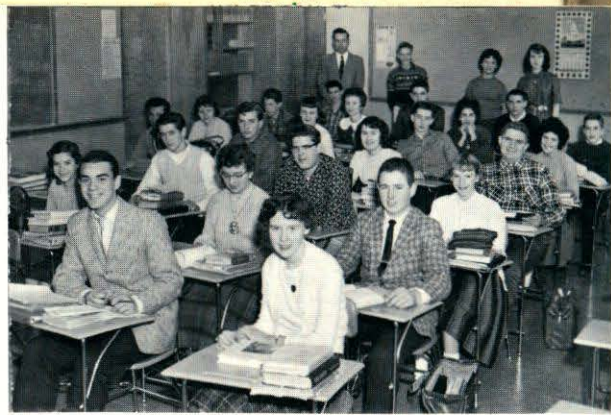
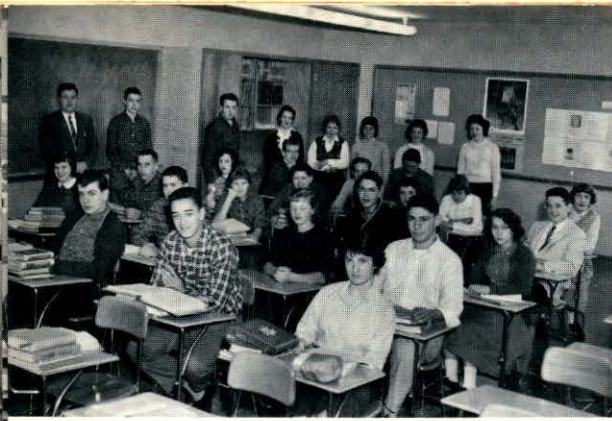
Treasurer — Roberta Medin

Vice-President — Linda Lee

Secretary — Janet Cali

Class Advisors — Margaret M. Kavanagh, Ernest R. Shepard

Abely, George	DePalma, Florence	Lambert, Gerald	Perkins, Mary Ann
Allen, Marjorie	Desmarais, Elaine	Lane, James	Perry, Janet
Anderson, Sandra	Dixon, Warren	Larsen, Robert	Pimentel, Raoul
Bacon, Harris	Doggart, Alan	Larson, Carol	Pomerleau, Donna
Bartlett, Georgia	Donaldson, Brenda	Lawrence, David	Popplewell, Robert
Barton, Joyce	Dorsey, Sharon	LeBrun, Ronald	Quinn, Mary Ann
Bell, Sharon	Duarte, Dennis	Leslie, Daniel	Remick, Ethelyn
Blecharczyk, Joseph	Dupras, Cynthia	Lewis, Nancy	Repose, Richard
Blomberg, Gail	Eaton, Ruth	Lewis, Roy	Roberts, Maureen
Blondin, Martha	Eaton, Shirley	Linstad, Harold	Rocha, Anthony
Boudreau, Robert	Ellinwood, Sandra	Linstad, Russell	Rogers, Karen
Bowden, Dorothy	Emerson, Ellen	Lyon, Robert	St. Onge, Linda
Breault, Nola	Erickson, Nancy	Mainville, Claire	Shagoury, David
Brodley, Raymond	Foucar, Bruce	Malloy, Thomas A.	Shaw, Karron
Brown, Sherwood	Fournier, Eleanor	Mann, Linda	Shaw, Patricia
Buntel, William	Freeman, Stance	Manning, Bruce	Simpson, Kenneth
Burette, Suzanne	Gagnon, Elaine	Manwell, Richard	Sloan, David
Burke, Susan	Galus, Frederic	Kimball, Kenneth	Smith, Janice
Burliiss, Peter	Giza, David	Mason, Thomas	Smith, Julia
Cahill, John	Goodwill, Robert	Masson, Raymond	Staveley, Carolyn
Caton, Russell	Gurich, Louis	McCormack, Donald	Tandus, Mary
Charlton, Robert	Hadley, Virginia	McEnaney, John	Tareila, Helen
Clark, Alan	Hartley, John	McGovern, Judith	Terrien, Howard
Clark, Judy	Harvey, Karen	McLaughlin, Marcia	Thiffault, Franklin
Collopy, Elizabeth	Hayden, Paul	McLeod, Daniel	Thomson, Susan
Cook, Gregory	Hayes, James	Mitchell, Dennis	Trainor, John
Cooper, R. Sandra	Herron, William	Molleur, Blake	True, Penelope
Cooper, William	Holden, George	Mores, Ralph	Turner, Frederick
Corey, Sandra	Holmes, Edward	Morton, Sandra	Upton, Dawn
Craig, Patricia	Hooper, Maureen	Mueller, Eleanor	Weeks, Marsha
Curley, Nancy	House, Linda	Mungovan, Brendan	Welch, Sharon
Curran, Sheila	Hulick, Barbara	Navoy, Peter	Whitney, Russell
Curren, Elizabeth	Kaminski, Anthony	Nebes, Robert	Wiiitanen, Walter
Currier, Philip	Kelley, LeRoy	Nelson, Sandra	Wilson, Robert
Cutrumbes, James	Kelly, Stephen	Olsen, Alexander	Wood, Kirby
Davidson, Jeffrey	Koch, Kenneth	Ouellette, Jacquelin	Woodward, Stanley
Day, Martha	Lahue, Richard	Page, David S.	Wyman, Douglas
		Pearson, John	Wyman, Judith



To Carlton,  
whose big smile  
we'll miss.  
Charlene  
Amber...



# Sophomore Class

## CLASS OF 1962

President — Alan Burne

Vice-President — Judith McCarthy

Treasurer — Judith Flanagan

Secretary — Veronica Reeves

Class Advisors — Dorothy K. Sexton, Edward J. Lynch

Abely, Donald	Dupee, Marion	Lane, Richard	Reedy, Walter
Armitage, James	Dupee, Martha	Larkin, Mary	Ricciardi, Peter
Aubrey, Roger	Emerson, Dennis	Lawrence, James	Ricker, George
Altemus, Diane	Farrington, Charles	Lemire, Richard	Rivard, Donald
Auger, Edgar	Farrington, Gail	Levesque, Jeanne	Robinson, Chandler
Avila, John	Ferreira, Dorothea	Lovering, Martha	Rocha, Gerald
Balkum, Theresa	Flannery, Laura	Lukas, Glenn	Rowsell, Richard
Barry, Bonnie	Fournier, Michele	Lytle, Alfred	Roymans, Hildegard
Bennett, Barbara	Frediani, John	Magnant, Esther	Russell, Douglas
Bourdon, Beverly	French, Sally	Marchand, Cheryl	Scaplen, William
Boyd, William	Frye, Carl	Martin, Donna	Scharn, Robert
Brow, Judith	Garthe, Gail	Mason, Robert	Scollin, Joseph
Brown, Joan	Gaudette, Carol	Masson, Donald	Scott, John
Brule, Mary	Gauthier, Eileen	Mauti, Henri	Shagoury, Paul
Buckley, Elaine	Gauthier, Yvette	McAndrew, Bryan	Shaw, Donna
Burns, Gail	Geftas, Louis	McDonough, John	Shay, Meredith
Burns, Thomas	Gervais, Melanie	McEnaney, Maureen	Sheehan, Clarida
Callahan, John	Gilinson, Philip	McNulty, George	Schirm, Peter
Callahan, Mary	Goodwin, Ralph	Merrill, Elaine	Signell, Carolyn
Campanella, Mathew	Gordon, Kendall	Malloy, V. Thomas	Siik, James
Carignan, Robert	Grant, Donna	Morgan, Judith	Slaney, Marilyn
Carignan, Wilfred	Gravelle, Judith	Morgan, Charles	Smith, Arthur Fred
Carkin, Judith	Gray, Barbara	Morrell, Linda	Smith, Arthur Frank
Carter, Lloyd	Guilmette, George	Muldoon, Carol	Smith, Jane
Caster, Ann	Gumuchian, Roger	Murphy, William	Smith, Robert
Chevalier, Mary	Hall, Ruth	Needham, Donna	Snook, Donna
Coalter, John	Harmon, Kay	O'Brien, Norris	Sproul, Vivian
Cossette, Carolyn	Harrington, Robert	Ouellette, Jeanine	Swenson, Howard
Cossette, Thomas	Hartley, James	Page, David	Tandus, Edward
Cote, Elaine	Heald, Diane	Palmer, Judith	Tassio, Maria
Coutu, Edward	Hedrick, Joanne	Pappas, Peter	Tassios, Sandra
Craig, Kathleen	Helliwell, Linda	Parker, Sandra	Taylor, Robert
Crocker, David	Henderson, Marsha	Parkhurst, Harry	Townsend, Irene
Crocker, D. Mason	Hewins, Marlene	Payne, James	Traversy, Elizabeth
Cullen, Constance	Hicks, James	Pearson, Eunice	Ullom, David
Cullinan, Robert	Howard, Donald	Perham, Bradford	Upton, Peter
Curley, Carol	Hoyt, Cynthia	Pestana, Diane	Valorose, Sheila
Dadian, Harry	Hoyt, Marcia	Pierce, Paul	Vincent, Dale
Dalli, Frances	Imbernino, Charlene	Pigeon, Michael	Walker, Albert
Danehy, Richard	Jason, James	Pihl, Lawrence	Walker, Katherine
Davidson, Robert	Jolin, Robert	Podgorni, David	Wallace, Patricia
DeFreitas, Robert	Knowles, Carol	Polubinski, Edward	Ware, Robert
Delaney, William	Kokoska, John	Pomerleau, James	Watson, Cynthia
Doggart, Ruth	Kelly, Edward	Potvin, Joseph	Wellington, James
Dorsey, Lewel	Lajoie, Joseph	Preston, Sandra	Whealen, Claudia
Doyle, James	Lambert, Roy	Purcell, Carole	Wilder, John
Duddy, Roy	Lane, Harriette	Quigley, John	Wilson, Bruce
Dudevoir, Sandra	Lane, Rachel	Quinn, Louise	Winship, Cheryln
			Zaher, John



# Freshman Class

## CLASS OF 1963

President — William Lussier

Treasurer — Kathleen Cullinan

Vice-President — Barbara Gifford

Secretary — Barbara Montbleau

Class Advisors — Christina Hanley, John W. Sargent

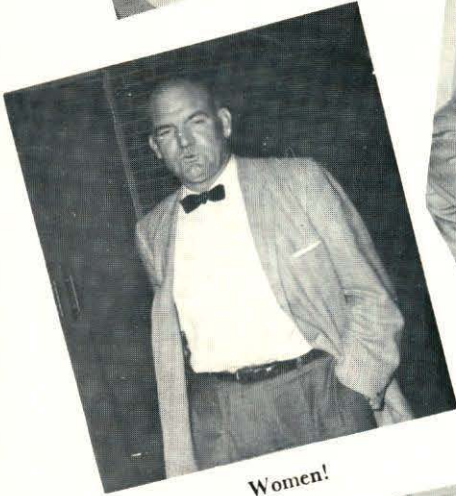
Anderson, Marilyn	Fanning, Jane	Lambert, Nancy	Picken, Cynthia
Angus, Alfred	Field, Richard	Lambert, Richard	Pimentel, James
Archer, Paul	Flanagan, John	Lantagne, Paula	Pomerleau, Janice
Auger, Patricia	Frediani, Albert	LeBlanc, Charles	Porter, Gail
Bacon, Dorothy	Freeman, Wayne	Leedberg, Joyce	Poulin, Marlene
Baran, Frank	Galus, William	LeLacheur, Lynda	Ranta, Barbara
Bartlett, Bradford	Gardner, Royal	Little, Paula	Ready, Bernard
Barton, Bonnie	Gendron, Edmund	Long, Thomas	Redden, Phillips
Bauch, Paul	George, Gary	Mackey, Robert	Reed, W. Duncan
Beaulieu, Patricia	Giza, Ludwig	MacLean, Donald	Riessle, Phillip
Bir, Richard	Gleason, William	Magnant, Loretta	Rogers, Leslie
Blake, John	Goodwill, Mary E.	Mahoney, Sally	Robinson, Nancy
Blecharczyk, Frank	Gravelle, James	Mainville, Doris	Savage, Edward
Blondin, V. Jonathan	Gray, Judith	Mallard, Mark	Sears, Cynthia
Boucher, J. Richard	Grondine, Paul	Maneeley, Robert	Shell, Judith
Breen, Linda	Guilmette, Ann	Marcangelo, Michael	Shugrue, Frederick
Brown, Doris	Hallberg, John	McDonald, Albert	Sidebottom, Judith
Brown, Henry	Hamel, Lottie	Marchand, Ronald	Sides, Andrew
Brun, Anna	Haritas, William	Marinel, C. Richard	Silva, Francis
Brun, Janet	Harvey, David	Matley, Joyce	Silva, Evonne
Bujnowski, Marianne	Hayden, Richard	Maybury, Wallace	Simpson, Allan
Buteau, Lorraine	Hazeltine, Jeffrey	McConeghy, Mathew	Sloan, Dennis
Butler, Virginia	Heffernan, Elizabeth	McCormack, Marsha	Sloan, Linda
Byam, Bruce	Herbert, Richard	McCormack, Nelson	Smith, Sandra
Calder, C. Douglas	Hill, Elizabeth	McNally, John	Southwick, Paul
Capuano, Michael	Hoffman, Julia	McMaster, Bruce	Starrett, Gayle
Carkin, Ruth	Hollingworth, Timothy	Medeiros, Honor	Stavely, Donald
Chevalier, Robert	Hough, Carol	Meere, Marsha	Stewart, David
Clermont, Edward	House, Arthur	Mentas, Charles	Strobel, Beverly
Collins, Harold	Howe, Robert	Merrill, Lorraine	Swanton, Barbara
Connor, Jacquelyn	Hoxie, Sandra	Minko, Margaret	Sweet, Donna
Connor, Thomas	Hoyt, John	Mooers, Gary	Tevlin, Kathleen
Constantine, Douglas	Hulick, Robert	Mores, Barbara	Thompson, Judith
Cooke, Charles	Humphrey, Susan	Morgan, Bayeux	Tieuli, Bonita
Craig, James	Johnson, Arthur	Moulton, Carol	Tighe, Dennis
Crocker, Judith	Johnson, Beverly	Moulton, David	Todd, Thomas
Cutter, Suzanne	Jolin, Martin	Murphy, Thomas	Toms, Douglas
Curley, John	Jones, Tina	Neild, Haworth	Tymowicz, Martin
Davis, Marylyn	Kahl, Peter	Newcomb, Donna	Walsh, Claire
Dawson, William	Kauffman, Stephen	Norton, Patricia	Welch, Sheila
Dean, Brenda	Kelley, Donna	O'Brien, Wayne	Wells, Stephanie
Dearth, Kathy	Kimball, Barbara	Oliver, James	Whitcomb, Sandra
DeSaulnier, Susan	Knight, Gary	Olsson, Carl	Whitcomb, Victoria
Draine, Mary	Knight, Kenneth	O'Neil, William	Whitehead, Warren
Drescher, Bette	Knox, Raymond	O'Shaughnessy, James	Whitney, Steven
Dubey, Barbara	Koch, Wayne	Parker, James	Wood, Cheryl
Ducharme, George	Kydd, Donald	Pearson, David	Wright, Roy
Dulgarian, Richard	Lachappelle, Ronald	Perkins, Thomas	Wyman, S. Frances
Durkee, Russell	LaCourse, Richard	Peterson, Susan	Wyman, William
Farrington, Susan	Lahue, David	Phillips, Kendrick	Znoj, Marjorie



It says here . . .



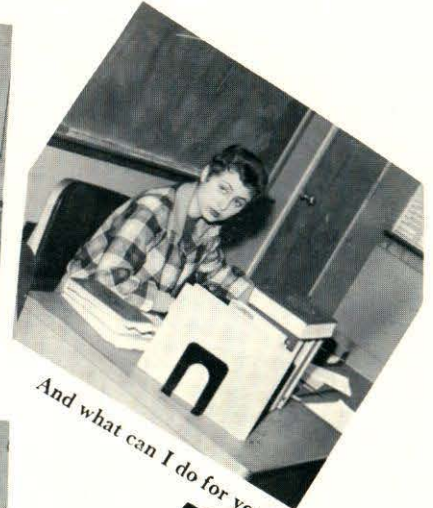
Look! It wiggles!



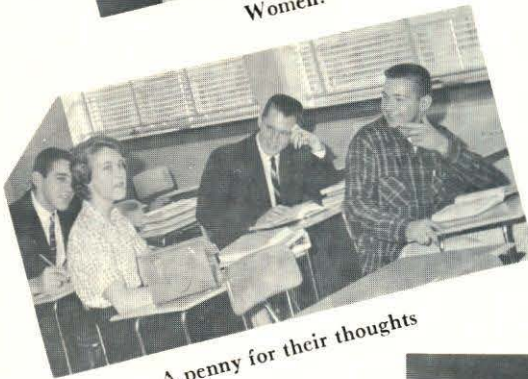
Women!



A rose among thorns



And what can I do for you?



A penny for their thoughts



All right, you guys, get out of the band room!



C above high C



Man, does this send me!

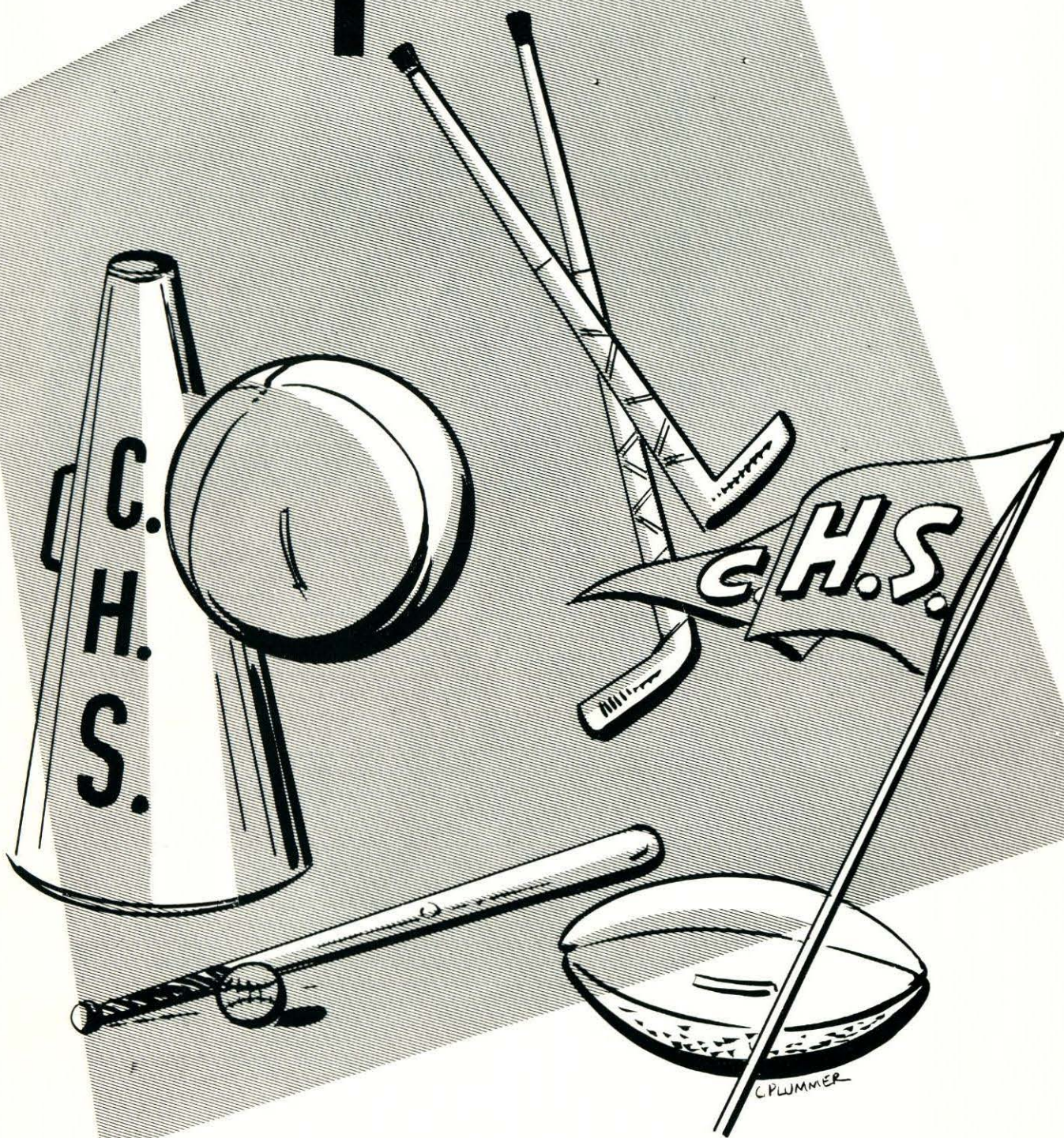


It beats wearing a bib!



The pizza's on.

# Sports



C. PLUMMER



# The Athletic Association



Under the expert guidance of Mr. Ernest R. Shepard, Faculty Manager, and Mr. George Simonian, Athletic Director, the Chelmsford High School Athletic Association completed a very successful drive for members. The ceaseless efforts of the homeroom representatives were the important contributing factors towards this success.

By loyal attendance at all athletic activities the student body has furnished the support so vital to success for the teams and for the building up of records of victory for the school.

Such an auspicious beginning has set a pattern for pupil support of the Athletic Association and all that it stands for in the sports life of our school.

## HOME ROOM REPRESENTATIVES

Rm.			
105	Meredith Shay, William Scaplen	209	Estelle Grondine, David Kydd
106	Marlene Poulin, Andrew Sides	210	Maureen O'Rourke, Raymond McEnaney
107	Sheila Welch, Thomas Todd	211	Gwendolyn Spinazola, James Stamp
108	Donna Snook, John Wilder	212	Marjorie Allen, John Cahill
110	Honor Medeiros, Bayeux Morgan	214	Karen Harvey, Dennis Duarte
111	Sally Mahoney, William Lussier	216	Lewel Dorsey, Robert Davidson
112	Mary Ellen Goodwill, Arthur House	217	Maryeileen Callahan, John Callahan
113	Bette Drescher, Charles Cooke	218	Judith Wyman, Franklin Thiffault
114	Virginia Butler, Paul Archer	219	Donna Pomerleau, Thomas Mason
201	Judith Morgan, Paul Pierce	220	Sally French, James Hicks
202	Cheryl Marchand, Fred Lytle	221	Nancy Lewis, Daniel Leslie
207	Linda Ayers, Gerard Buteau		
208	Muriel Deering, David Dirubbo		

Faculty Manager: Ernest R. Shepard

Athletic Director: George Simonion



## *Cheerleaders*

Co-Captains — Karen Lee, Joan O'Sullivan

SENIORS  
 Kathy Bernacki  
 Wendy Cooke  
 Judy St. Pierre  
 Martha Shay  
 Carolyn Walker

JUNIORS  
 Gail Blomberg  
 Nancy Curley  
 Lyn Remick  
 Marsha Weeks

FRESHMAN  
 Barbara Gifford

Coach — Miss Margaret Kavanagh

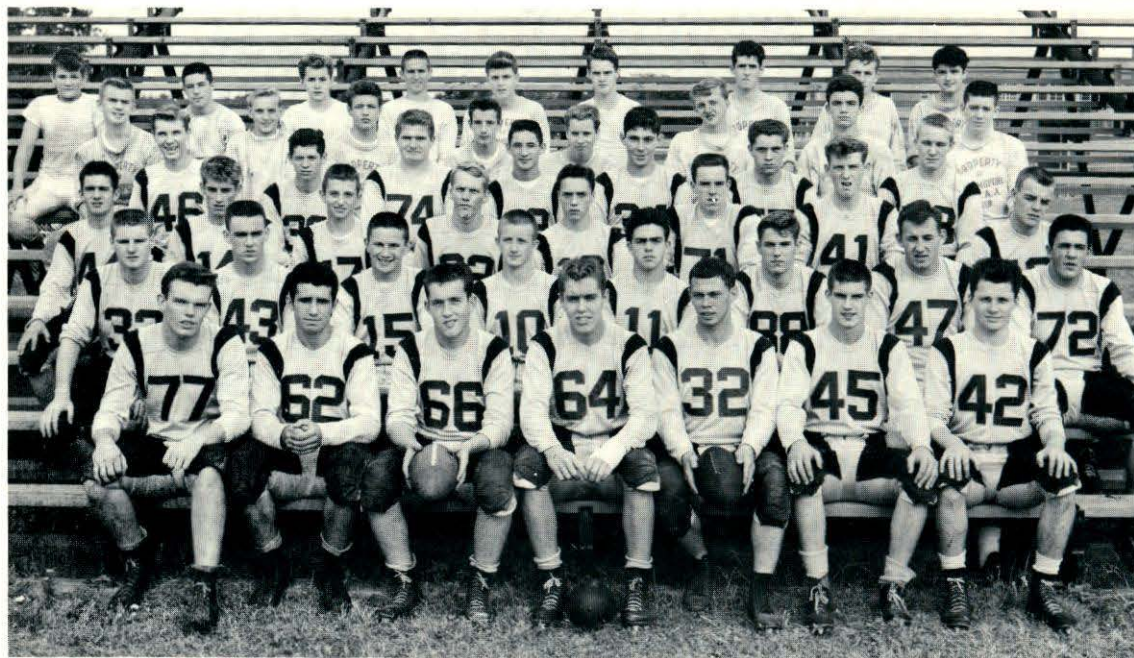
The cheerleaders of 1960 formed an attractive squad, outfitted in their maroon plaid kilts, charcoal sweaters, and flashing white gloves, as they led the football players on to a successful season.

During the basketball season, the girls, divided into two groups, spurred the players on to a championship. One squad was led by Karen Lee, the other by Joan O'Sullivan.

Capably led by Karen and Joan, and expertly guided by Miss Margaret Kavanagh, the cheerleaders added a spark of enthusiasm to the sports events.



# Football



The 1959 Chelmsford High School football team has maintained Chelmsford's good football record and completed another successful season under the capable leadership of Co-captains David Kydd, Roger Blomgren, and Edward Hall and the expert guidance of Coach Joseph P. Nolan assisted by Mr. George N. Klesaris and Mr. Henry P. McCarthy.

The Chelmsford eleven opened with an 8-8 tie over Tewksbury on Tewksbury's field. The following week we dedicated our new field with an 8-6 win over our new opponent, Canton. The next two games were thrillers as the Lions downed Dracut 30-8, and shut out Burlington, last year's Suburban Champs, 24-0. At Wilmington, Chelmsford maintained its winning streak with a score of 20-14. After this game the winning ball was presented to Coach Joseph P. Nolan in honor of his 100th game. His Chelmsford Lions presented Coach Nolan with a Paul Revere bowl in appreciation of all that he has done in developing excellent teams and true sportsmanship in Chelmsford.

Powerful Ipswich defeated us 16-0 and North Andover won with the score of 14-8.

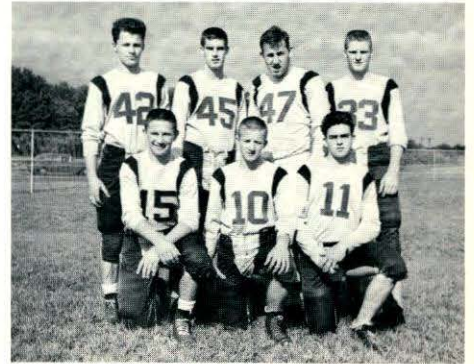
To close our season at Billerica on Thanksgiving morning, the Lions played hard and fought valiantly, but were defeated 19-0 by the Billerica eleven.

Co-captains Kydd, Blomgren, and Hall wish to express their sincerest appreciation to all who helped them in any way during the 1959 season. They and the team thank particularly their coaches who give so much of themselves, their time, their skill, their inspiration, that the team may be successful in the truest sense.

Mr. Nolan again has been the sage mentor of Chelmsford High School football assisted this year most competently by Mr. Klesaris. Mr. McCarthy coached the successful J. V. team which won six of its seven games, by shut-outs. To show their appreciation, the JV'S presented Mr. McCarthy with a trophy.

The '59 eleven wish the '60 eleven under the leadership of Robert Gleason and Robert Lyons all the luck and success.

VARSITY RECORD							
Tewksbury	8	Chelmsford	8	Wilmington	14	Chelmsford	20
Canton	6	Chelmsford	8	Ipswich	16	Chelmsford	0
Dracut	8	Chelmsford	30	No. Andover	14	Chelmsford	8
Burlington	0	Chelmsford	24	Billerica	19	Chelmsford	0
Won - 4 — Lost - 3 — Tie - 1							



# Field Hockey



Under the able coaching of Miss Carol Murphy, the Chelmsford High School Girls' Field Hockey team has completed another successful season with five wins and four losses. The J.V. team had two wins, three losses, and three ties.

A skillful and enthusiastic team backed Co-captains Linnea Peterson and Mary Pigeon during games and practices and worked hard to achieve their "goal."

Best of luck to Co-captains-elect Patricia Craig and Claire Mainville.

SCORES							
Chelmsford	6	Wilmington	3	Chelmsford	6	Billerica	1
Chelmsford	5	Billerica	0	Chelmsford	4	Acton	1
Chelmsford	0	Woodbury	3	Chelmsford	0	Woodbury	1
Chelmsford	0	Wilmington	2	Chelmsford	5	No. Andover	0

# Softball



Although the girls at Chelmsford High School have played softball for many years as in intramural activity, 1959 was the first year in which it was played as a "letter" sport. The season was a profitable one, too, for of the eight games that were played, not one was lost. Sparked by Co-captains Linda Lupien and Lea Auger and star pitcher Barbara Lebedzinski, and ably directed by Coach Carol J. Murphy, the girls enjoyed a season to be well remembered, and hopefully copied.

As the team was not organized at the time our 1960 LION went to press, we can give no results for the '60 season; but we can proudly present the scores of last year's games and hope that this year, when we meet these same four teams, we shall fare as well.

SCORES							
Chelmsford	10	Woodbury	2	Chelmsford	25	Acton	8
Chelmsford	11	Woodbury	1	Chelmsford	25	Woburn	7
Chelmsford	32	Woburn	5	Chelmsford	12	Billerica	4
Chelmsford	18	Billerica	6	Chelmsford	29	Acton	24

# Boys Basketball



From a most gloomy beginning, the 1959-1960 Chelmsford High School basketball team pulled out to finish the season in a blaze of glory with the LIONS winning the Suburban crown at Billerica in a playoff with the Scarlet Knights of North Andover. How proud we are to have the Suburban trophy back in our trophy case after an absence of six years.

Our new gym with its greater seating capacity, ample floor space, and modern glass backboards for the baskets was a factor contributing directly and indirectly to our success. We are proud to have had our gym used first officially for an exhibition game of the World Champion Boston Celtics under the sponsorship of the Boosters Club. A capacity crowd watched the skilled performance of this popular club as it did the Chelmsford High School team once our season began.

As our team gained momentum and was really rolling, the LIONS gave their fans, every time, an evening of thrills and excitement with many games won or lost in the last few minutes of play. All through the season Chelmsford High School played an interesting and stimulating brand of basketball which carried through the tie, the playoff, and the All-Star game.

Under their coach of long experience, Murray B. Hicks, and led by Captain Joseph Spinazola, a sharp-shooting guard, the team has completed a championship year of which its members can be justly proud.

Many an evening had its thrills heightened by the expert game of the J.V.'s led by Henry Brown, and coached by Henry P. McCarthy. The J.V.'s piled up a series of admirable scores with 14 wins and 3 losses.

To Captain-elect Kenneth Koch and next year's hoopsters, we wish all success.

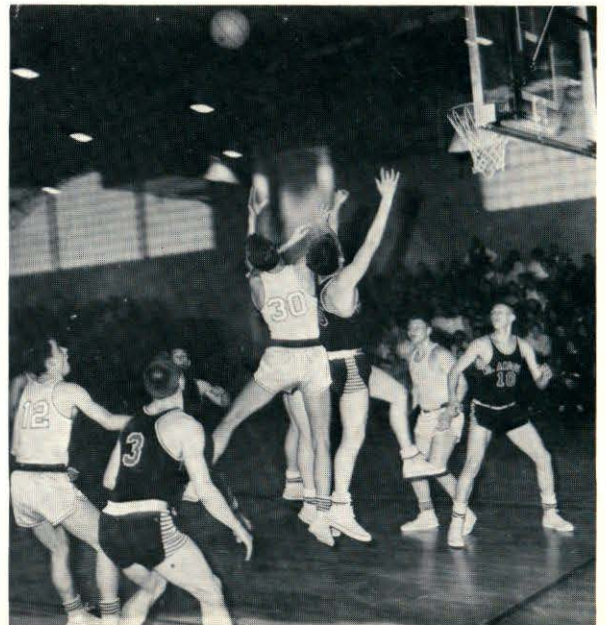
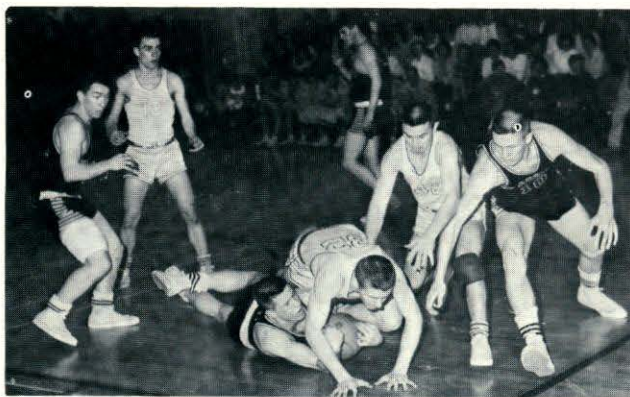
SCORES							
Chelmsford	33	Wakefield	38	Chelmsford	61	Tewksbury	40
Chelmsford	52	Weston	54	Chelmsford	59	St. Joseph's	41
Chelmsford	46	Concord	50	Chelmsford	67	Burlington	42
Chelmsford	31	Ayer	33	Chelmsford	78	Wilmington	50
Chelmsford	43	St. Joseph's	61	Chelmsford	74	Billerica	47
Chelmsford	69	Burlington	66	Chelmsford	43	Dracut	40
Chelmsford	57	Wilmington	45	Chelmsford	81	No. Andover	70
Chelmsford	57	Billerica	41	Chelmsford	76	Tewksbury	39
Chelmsford	51	Dracut	53	Chelmsford	71	* No. Andover	69
Chelmsford	69	No. Andover	74	Chelmsford	45	All Stars	52

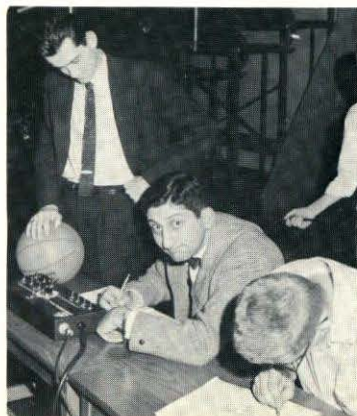
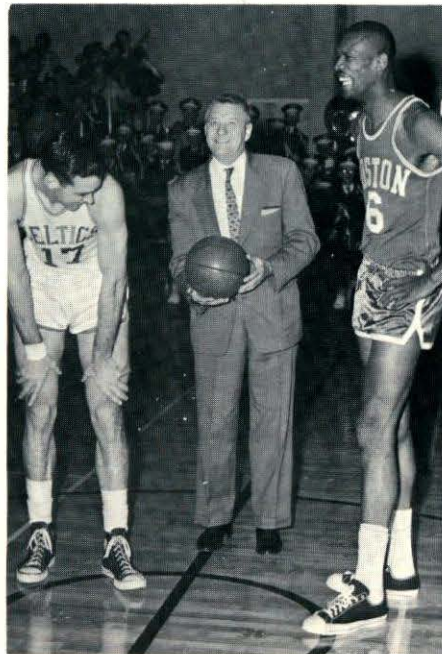
\* Playoff











# Baseball



The 1959 team upheld the Chelmsford reputation for playing good ball and for giving both spectators and participants alike an enjoyable season.

The fine coaching of Mr. Joseph P. Nolan and Mr. Frank Hill with the captaincy of Conrad Stone, led the team to many victories.

Since the 1960 season starts after THE LION goes to press, we can print only the results of last year's games, announce the new assistant coach, Mr. John Sargent and this year's captains, Douglas Eno and Peter Picken, and give hearty wishes for a successful season.

## 1959 RESULTS

Chelmsford	13	Wilmington	1	Chelmsford	5	Burlington	7
Chelmsford	9	Tewksbury	1	Chelmsford	5	Dracut	4
Chelmsford	0	Dracut	4	Chelmsford	10	No. Reading	19
Chelmsford	0	No. Andover	11	Chelmsford	9	No. Andover	0
Chelmsford	2	Billerica	10	Chelmsford	1	Billerica	7
Chelmsford	8	Wilmington	5	Chelmsford	11	Burlington	3
Chelmsford	3	Tewksbury	2	Chelmsford	5	No. Reading	2

# Cross Country



Under the capable direction of Coach John McGuire, Chelmsford High School's Cross Country team assembled for the first year. The team has been fortunate to have three very able Co-captains: Phil Currier, Ray McEnaney, and Andy Wolfgang.

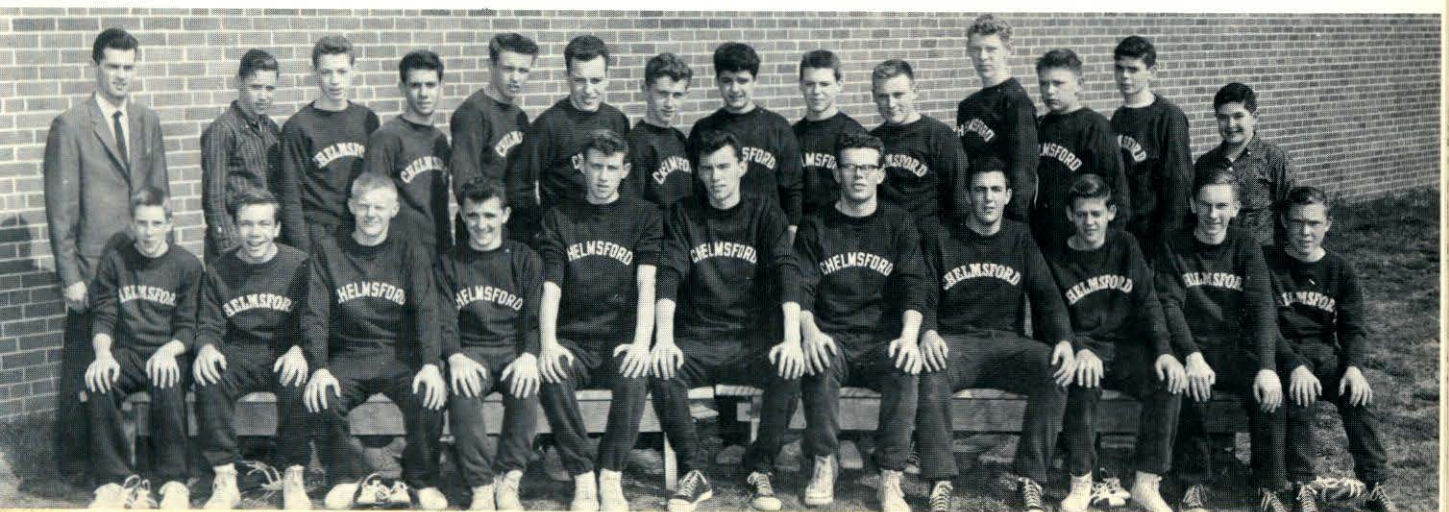
This year Chelmsford High entered five meets: Bedford, Weston, Wilmington, Billerica, and the State Meet at Jamaica Plain. Coach McGuire plans to form a spring squad also.

Under this year's expanded program the team has worked with unceasing spirit and boundless enthusiasm. Next year our team hopes to have great success since we are losing only two of the original members.

## LETTERMEN

John Avila  
Phil Currier  
Edward Holmes  
Ray McEnaney  
Norris O'Brien

Brad Perham  
Ken Simpson  
Andy Wolfgang  
Kirby Wood



# Athletic Awards

## FOOTBALL

Roger Blomgren, Co-Captain  
Edward Hall, Co-Captain  
David Kydd, Co-Captain  
Peter Burliss  
James Cutrumbes  
Harry Dadian  
Jeffrey Davidson  
John Dorsey  
Douglas Eno  
David Farrow  
Robert Gleason  
Paul Hayden  
Timothy Hehir  
James Jason  
Donald Kydd  
Ronald LeBrun  
William Lussier  
Robert Lyon  
Alfred Lytle  
Thomas Malloy  
Thomas Mason  
Louis Masson  
Bayeux Morgan  
Thomas Perkins  
Allen Simpson  
Joseph Spinazola  
James Stamp  
Robert Talbot  
Edward Tandus  
Franklin Thiffault  
John Trainor  
James Wellington  
William Wyman  
James Delaney, Mgr.

## FIELD HOCKEY

Linnea Peterson, Co-Captain  
Mary Pigeon, Co-Captain  
Linda Ayers  
Norma Bell  
Barbara Burkinshaw  
Patricia Craig  
Sharon Dorsey  
Jo-Anne Egan  
Jo-Anne Gravelle  
Judith Harrington  
Claire Mainville  
Maureen O'Rourke  
Sally Remick  
Diane Ricciardi  
Karen Rogers  
Susan Thomson  
Constance Tousignant  
Sharon Welch

## BASKETBALL, BOYS'

Joseph Spinazola, Captain  
Henry Brown  
James Armitage  
Robert Davidson  
Douglas Eno  
Robert Goodwill  
Jeffrey Hazeltine  
Timothy Hehir  
James Hicks  
Kenneth Koch  
Thomas Long  
William Lussier  
Alfred Lytle  
Robert MacKinnon  
Thomas Mason  
Bradford Perham  
Michael Pigeon  
William Scaplen  
Joseph Staveley  
Robert Talbot  
Andrew Wolfgang  
William Wyman

## BASKETBALL, GIRLS'

Norma Bell, Co-Captain  
Judith Harrington, Co-Captain  
Majorie Allen  
Jacqueline Connor  
Patricia Craig  
Joan Donoghue  
Lewel Dorsey  
Sharon Dorsey  
Martha Dupee  
Jo-Anne Egan  
Jo-Anne Gravelle  
Judith Gravelle  
Jo-Anne Hedrick  
Cynthia Hoyt  
Linda Lee  
Claire Mainville  
Linnea Peterson  
Mary Pigeon  
Hildegard Roymans  
Cynthia Watson

## CROSS COUNTRY

Philip Currier, Co-Captain  
Raymond McEnaney, Co-Captain  
Andrew Wolfgang, Co-Captain  
John Avila  
Edward Holmes  
Norris O'Brien  
Bradford Perham  
Kenneth Simpson  
Kirby Wood

## BASEBALL

Douglas Eno, Co-Captain  
Peter Picken, Co-Captain  
Wayne Medeiros

## CHEERLEADERS

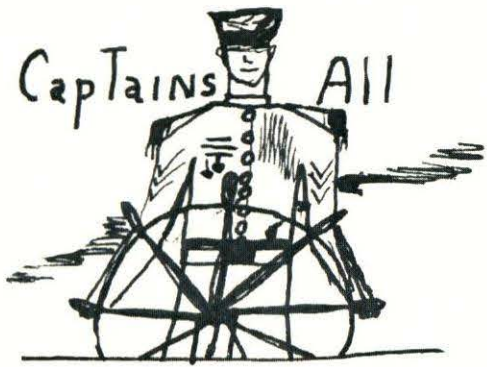
Karen Lee, Co-Captain  
Joan O'Sullivan, Co-Captain  
Kathryn Bernacki  
Gail Blomberg  
Wendy Cooke  
Nancy Curley  
Barbara Gifford  
Lynn Remick  
Martha Shay  
Judith St. Pierre  
Carolyn Walker  
Marsha Weeks

## BAND

Cynthia Banks  
David Crocker  
David Dirubbo  
Carlyn Dittmer  
Robert Harrington  
Richard Hoxie  
Robert Jolin  
Arthur Kirk  
Kenneth Koch  
Richard Lane  
Richard Lemire  
Sandra Morton  
Robert Nebes  
Alex Olsen  
Edward Polubinski  
Louise Quinn  
Richard Repose  
Peter Ricciardi  
George Ricker  
Robert Scharn  
John Scott  
Arthur Frank Smith  
John Wilder  
Robert Wilson  
Kirby Wood

## MAJORETTES

Barbarann Niemaszuk, Captain  
Maryeileen Callahan  
Elaine Desmarais  
Diane French  
Ann Hansen  
Karen Harvey  
Carol Knowles  
Judith Knowles  
Esther Magnant  
Roberta Mortali  
Priscilla Staveley  
Claudia Whealen

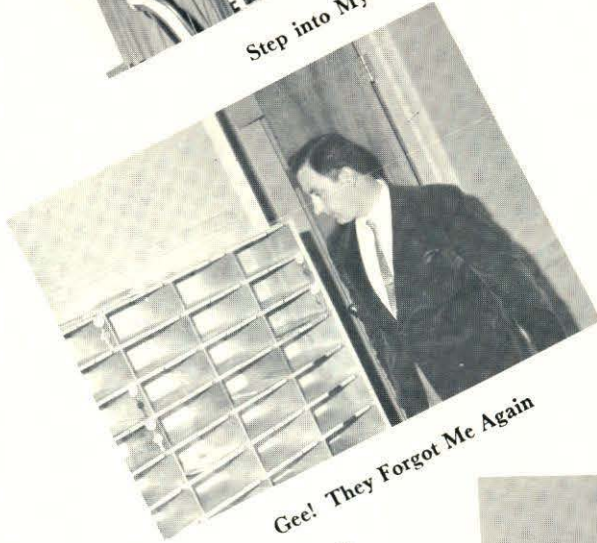




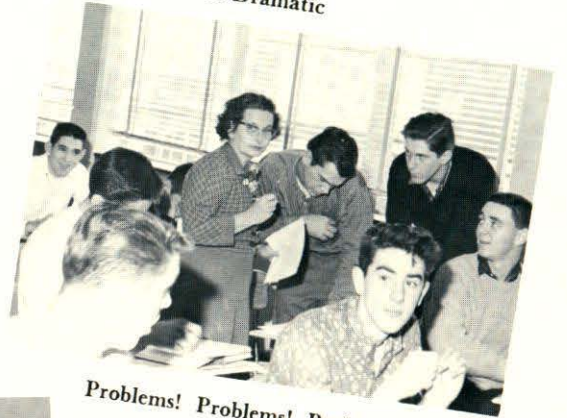
Step into My Office!



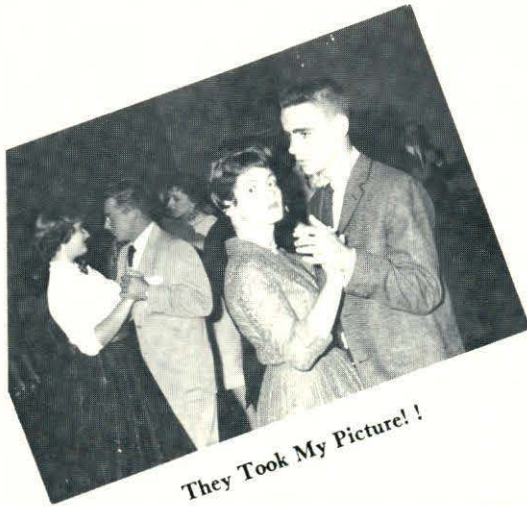
Oh! Be More Dramatic



Gee! They Forgot Me Again



Problems! Problems! Problems!



They Took My Picture! !



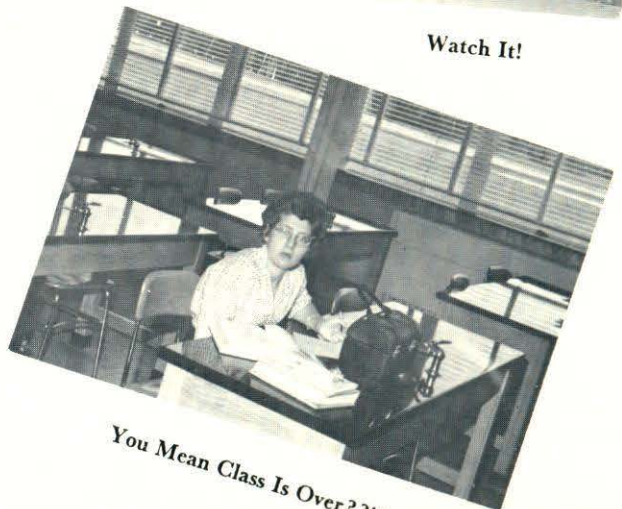
You Mean the Bells Aren't Working Again!



Watch It!

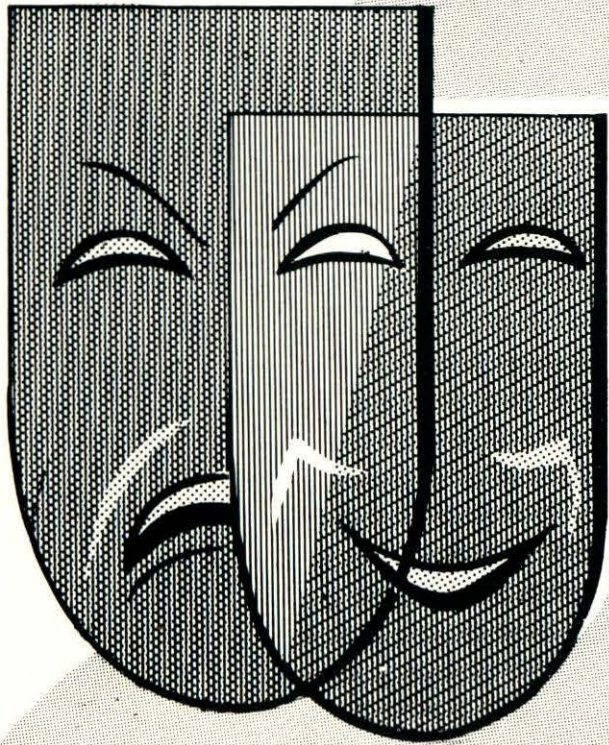


Want Some?



You Mean Class Is Over??!!

# Activities



G. PLUMMER



# Student Council



## OFFICERS FOR THE STUDENT COUNCIL FOR THE 1959-1960 YEAR WERE:

President ..... Elizabeth Vaipan  
 Vice President ..... Sharon Welch  
 Corresponding Secretary ..... Patricia Pope  
 Recording Secretary ..... Donna Snook  
 Treasurer ..... Bruce Byam

**SENIOR REPRESENTATIVES:**  
 William Beliveau  
 Judith Harrington  
 Frederick Field

**SOPHOMORE REPRESENTATIVES:**  
 Paul Pierce  
 Hildagarde Roymans  
 Alan Burne

**JUNIOR REPRESENTATIVE:**  
 Robert Goodwill  
 Shirley Eaton  
 Robert Gleason

**FRESHMAN REPRESENTATIVES:**  
 Donald Kydd  
 Mary Ellen Goodwill  
 William Lussier

Assembly Chairman ..... Timothy Hehir  
 Welfare Chairman ..... Brenda Donaldson  
 Social Chairman ..... Alfred Lytle  
 Faculty Advisors ..... J. Francene Kealy, George J. Betses

During 1959-1960, the Student Council celebrated its tenth year as an active, contributing organization in Chelmsford High School. The Council has continued to do all in its power to serve the best interests of the student body, and to aid in maintaining and developing to a greater degree our fine school spirit.

Our new school presented new problems, new opportunities, and a greater scope for activity. Our outstanding venture this year has been the sponsoring of a school store under the direction of Mrs. Dorothy Sexton and her salesmanship class. Many interesting and varied items are displayed in the attractive exhibition cases to tempt pupils to purchase.

Our usual activities such as selecting suitable assembly programs, selling refreshments at games, acting as ushers at school events, adopting a needy family at Christmas, and the like have been continued.

Our talent show was again a colorful, sparkling affair. To Mr. Phelps and all who were responsible for its tremendous success go our thanks.

All in all, the Student Council, under the expert leadership of its president, Elizabeth Vaipan, and the wise guidance of its advisors, Miss Francene Kealy and Mr. George J. Betses, has completed another year of worthy attainments.



# National Honor Society



## OFFICERS

President .....	Kelvin Worthley
Secretary .....	Kathryn Bernacki
Vice-President .....	Constance Tousignant
Treasurer .....	Lillian Rondeau
Advisor .....	F. Christine Booth

### SENIORS

Katherine Bernacki	Gertrude Morris
Kathleen Clark	Maureen O'Rourke
Wendy Cook	Linnea Peterson
Mary Fisher	Doris Reid
Frederick Field	Sara Remick
Diane French	Lillian Rondeau
Jane Hansen	Judith St. Pierre
Jean Hundt	Beverly Silva
Charles Laughton	Constance Tousignant
Barbara Lebedzinski	Elizabeth Vaipan
Eunice LeMasurier	Carolyn Walker
Louise Manahan	Kelvin Worthley

### JUNIORS

Harris Bacon	Richard Repose
Robert Charlton	Sandra Anderson
Edward Holmes	Cynthia Dupras
Anthony Kaminski	Virginia Hadley
Daniel Leslie	Barbara Hulick
Bruce Manning	Ethelyn Remick
Robert Nebes	Sharon Welch
Alexander Olsen	

The development of the qualities of scholarship, service, leadership, and character in Chelmsford High School is the goal of the National Honor Society.

Under the Society's guidance, for the first time at Chelmsford, honor study halls have been established where students on the honor roll work without supervision. Other National Honor Societies have been invited to our school for fellowship and discussion. The leadership of this group has been assumed by our members. Within our own school the members of the National Honor Society have tried to be of service to the student body in every way possible.

We are deeply thankful for all the time and work that Miss F. Christine Booth, our advisor, has so generously devoted to us.

# Junior Red Cross



The Junior Red Cross Council, one of the more active groups at Chelmsford High School, held its annual election in October. The officers chosen were:

- President ..... Diana Ricciardi
- Vice-President ..... Beverly Silva
- Secretary ..... Muriel Deering
- Treasurer ..... Judith Zabierek
- Advisor ..... Marjorie B. Scorboria

Under the skillful guidance of Miss Marjorie B. Scorboria, the Junior Red Cross continued its excellent record of fine service. This year, patients at the Bedford State Hospital were cheered with colorful posters for Thanksgiving, Christmas, Valentine's Day, and Easter.

The executive committee has appointed the following chairmen:

- Poster Committee ..... Judith Wyman
- Cartoon Committee ..... Ann Berry
- Crossword Puzzle Committee ..... Carolyn Briana
- ..... Cynthia Banks
- ..... Joanne Egan

The International Correspondence Album, was sent to Belgium. Through this album, students in Belgium can compare their school curriculum and activities with ours.

The officers, along with Miss Scorboria, enjoyed a visit to the Red Cross Chapter House in Lowell to learn more about the Red Cross activities conducted there.

A membership drive, resulting in one hundred per cent student body membership, rounded out a very successful year.

## Dramatic Club



The Dramatic Club began its 1959-1960 season with a new, well-equipped theater-auditorium to augment the enthusiasm and talent of the members. Gone are the days of transporting scenery, of making-do with poor lighting, and of sharing quarters with basketball and physical education. Now our productions move forward under the best conditions — modern lighting, a custom-made set, ample work and playing areas, and luxurious surroundings for the audience.

The annual production, *A Little Honey*, by William Davidson, charmed its audience with its hilarious comedy dealing with the foibles of a crisis-plagued family whose problems are solved by the tart, sage grandmother.

An innovation was the presentation before the school body of a second vehicle, *Sorry, Wrong Number* by Lucille Fletcher. This suspense-packed horror drama kept the students under its spell to the very end.

Because of the large group of students interested in the many phases of dramatic work, the Dramatic Club has two divisions: junior, with Mrs. Hanley as director, for freshmen and sophomores; senior, with Miss Kinneen, for upperclassmen.

The junior group added much to our observance of Christmas with *Why the Chimes Rang*, a dramatization of one of the familiar Christmas legends.

Some of the club had the good fortune to see Miss Eva LeGalliene in *Mary Stuart*, by Schiller, at the Colonial Theater in Boston. Eight of the group had the unforgettable experience of going backstage to interview Miss LeGalliene, a world-famous actress.

Under the skillful guidance of Miss Martha F. Kinneen and Mrs. Christine A. Hanley, the Dramatic Club has enjoyed a fruitful year.

### SENIOR

President — John Redican  
Vice-president — Karen Lee  
Secretary — Judith St. Pierre  
Treasurer — Patricia Pope

### JUNIOR

President — Meredith Shay  
Vice-president — Sandra Smith  
Secretary — Barbara Gray  
Treasurer — Sandra Whitcomb  
Attendance officer — Ann Caster



## *Forensic Unit*



### OFFICERS

President .....	Walter Dyke
Vice-President .....	Frederick Field
Secretary .....	Jean Hundt
Treasurer .....	Charles Laughton
Business Manager .....	Ronald McShechy
Coordinator .....	Lillian Rondeau
Timekeeper .....	James Long
Novices .....	Harris Bacon, Robert Charlton
Clerical Assistant .....	Martha Day

Coach, Mr. Edward J. Lynch

The Forensic Unit, under the direction of Mr. Edward J. Lynch, coach, enjoyed a championship first year in the Suburban Lowell Debating League. The national secondary topic for this season was Resolved: That the Federal Government should substantially increase its regulation of labor unions.

The affirmative side of the argument was handled by Jean Hundt, Walter Dyke, Frederick Field, Robert Charlton, and James Long. The negative was handled by Lillian Rondeau and Ronald McShechy. Chairmanships were held by Frederick Field, Charles Laughton, Jean Hundt, and Walter Dyke.





## *Lamplighters Club*

President ..... James Stamp  
 First Vice-President ..... James Doyle  
 Second Vice-President ..... Gerald Lambert  
 Secretary ..... Diane Altemus  
 Treasurer ..... Louis Masson  
 Faculty Advisors ..... Mr. John Dunigan and Mr. John Sargent

Diane Altemus  
 Alan Burne  
 David Crocker  
 David Dirubbo  
 Warren Dixon  
 Roy Duddy  
 James Doyle  
 James Delaney  
 Jeffrey Davidson  
 Robert DeFreitas

Bruce Foucar  
 Gerald Fanning  
 David Giza  
 Stephen Kelley  
 Leroy Kelley  
 Kenneth Kimball  
 Russell Linstad  
 Gerald Lambert  
 Richard Lemire  
 Ralph Mores  
 Dennis Mitchell

John McEnaney  
 Louis Masson  
 Raymond Masson  
 Peter Navoy  
 Peter Pappas  
 Arthur Smith  
 James Stamp  
 Stanley Woodward  
 Russell Whitney  
 David Shagoury

The Lamplighters have enjoyed a more extended program this year, since they have had the opportunity to become acquainted with more machines of different types than previously and to learn how to operate and maintain them.

Ably guided by Mr. John Dunigan and Mr. John Sargent, the members have aided teachers in trying to enlighten classes with films and recordings. We of Chelmsford High are very fortunate to have such a group willing to sacrifice their time and efforts so that we may broaden our knowledge.





## *Radio Club*

President ..... George MacLauchlan  
 Vice-President ..... Donald Abely  
 Secretary-Treasurer ..... Donald Howard  
 Advisor ..... Paul Murphy

The Chelmsford High School Amateur Radio Club was organized this year under the direction of Mr. Paul Murphy to meet the growing demand of those interested in electronics for an opportunity to exchange ideas, acquire skills, and further their understanding. Already we have many members, nine of whom are "hams" with amateur radio operator licenses. For the rest, classes on code and radio theory are in operation. It is the aim of this club not only to fulfill this need but also to establish and maintain a Chelmsford High School amateur radio station.

The members wish to thank Mr. Murphy for helping to organize and carry out the plans of the club.





# Science Club



## OFFICERS

President ..... Vaughn Hadley  
 Vice-President ..... Edward Holmes  
 Secretary ..... Barbara Lebedzinski

SCIENCE FAIR COMMITTEE  
 Beverly Silva  
 Ronald Engel

PROGRAM COMMITTEE  
 Muriel Deering  
 Bruce Manning

## 1960 SCIENCE FAIR WINNERS

Vaughn Hadley  
 Alan Burne  
 Barbara Lebedzinski

Edward Holmes  
 Donald Howard

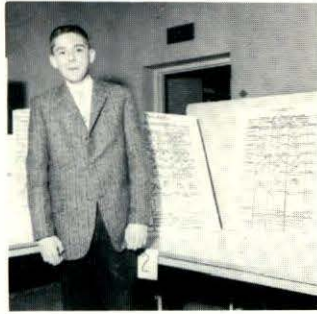
The purpose of the Science Club is to acquaint the members with as much of the whole scope of science as possible and to draw a resulting interest in some phases of science from them.

The 1959-1960 year saw an expansion of the activities of the club with membership made available to freshmen, with meetings more frequent, and films more plentiful.

The high point of any year is the Science Fair. The first place winner, Vaughn Hadley this year, has an opportunity to go to the M.I.T. Science Fair; the top five winners participate in "Technorama," Lowell Tech's Science Fair. Exhibitors, judges, and spectators agreed that our first science fair in the new high school on March 11, 1960 was by far the best in the history of the Science Club.

Again the active force behind the Science Club has been Mr. George Simonian. His lively interest and active concern for the members and for science itself has been an inspiration which is greatly appreciated by every member.

# Science Fair



## Press Club



One of the most important but most inconspicuous clubs at Chelmsford High School is the Press Club. It is the link between Chelmsford High and the general public. With the able assistance of their advisor, Mrs. Charlotte S. Carriel, the members of the club collect, write, and send in the school news to the *Lowell Sun* and the *Chelmsford Newsweekly* every week.

In addition to serving the community, the Press Club also gives its members, comprised of Juniors and Seniors, an opportunity to learn to express themselves more clearly and effectively.

### MEMBERS

#### SENIORS

Cheryl Armitstead  
Ann Berry  
Carole Bowser  
Barbara Burkinshaw  
Nancy Carey  
Mary Jo Fisher  
Barbara Lebedzinski  
Linda Vinecombe

#### JUNIORS

Martha Day  
Gail Garthe

Faculty Advisor — Mrs. Charlotte Carriel

## Baton Twirlers



Barbarann Niemaszyk, Captain  
Priscilla Staveley, Drum Majorette  
Maryeileen Callahan, Acrobat

The Chelmsford High School Baton Twirlers have had a very successful year. The girls have added color, spark and glamour to our pep assemblies, football games, and parades, with their outstanding exhibition of fancy stepping and twirling. Captain, Barbarann Niemaszyk and Drum Majorette, Priscilla Staveley, in their white velvet uniforms with maroon trim, and white fur shakoes, accented the maroon-clad corps, which they led. All the twirlers contributed to the success of our talent show.

An added attraction this year was Maryeileen Callahan, displaying her expert acrobatic ability.

Leaders next year will be Karen Harvey, Captain, and Elaine Desmarais, Drum Majorette.

### SENIORS

Diane French  
Ann Hansen  
Judith Knowles

### JUNIORS

Elaine Desmarais  
Karen Harvey  
Linda Mulaniff

Roberta Mortali  
Barbarann Niemaszyk, Captain  
Priscilla Staveley, Drum Majorette  
SOPHOMORES  
Maryeileen Callahan, Acrobat  
Carole Knowles  
Esther Magnant  
Claudia Whealen

# Band



Under the efficient guidance of our new band director, Mr. William G. Phelps, the Chelmsford High School Band has again completed another successful year.

Not only does this organization add spirit and zest to the football games, but it also provides moral support.

Many of its activities this year have included entertaining at assemblies, bringing Santa to Lowell, Christmas caroling, and upholding its representation as an outstanding band in the Northeastern Music Festival.

This organization truly provides a great service to both school and community, and we, the Class of 1960, are proud of its accomplishments.



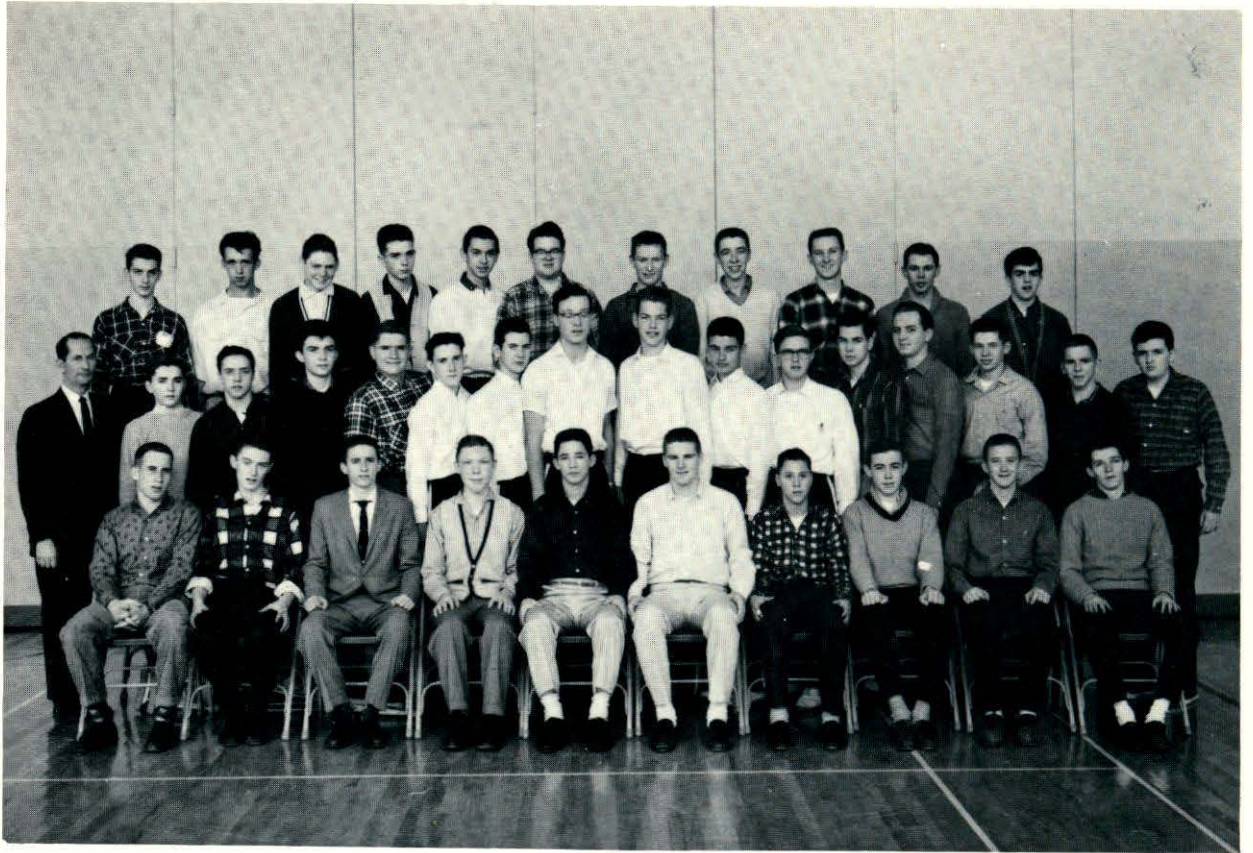
# Girls' Glee Club



The Girls' Glee Club of Chelmsford High School is very fortunate in having Mr. William G. Phelps take over their direction. Each Monday, about ninety girls gather in the music room for rehearsal. Miss Georgia Bartlett is the pianist for the group.

The Glee Club has taken part in the programs of the school on Veterans' Day, Thanksgiving, Christmas, and Memorial Day and has entertained for the P.T.A. and in the Talent Show. The Glee Club has had an active musical year.

## Boys' Glee Club



This year Chelmsford High School has not only a fine Girls' Glee Club, but also an up-and-coming Boys' Glee Club as well. There are about fifty boys who meet every Friday with Mr. Phelps for rehearsal. We are very proud of the Boys' Glee Club and wish to thank Mr. Phelps for developing such a fine group. Edwin Drescher is the pianist for the club.

Each Wednesday the boys join the girls for choral training. Chelmsford has a singing future.

# School Store



## OFFICERS

General Manager .....	Carole Bowser
Office Manager .....	David Dirubbo
Purchasing Manager .....	Jo Ann Gravelle
Sales Manager .....	Wayne Medeiros
Publicity Department .....	Patricia Connor
Advisor: .....	Mrs. Dorothy Sexton

The school store, or our "Shoppers' World," opened in November, 1959, and since then has enjoyed a very successful year. Under the guidance of Mrs. Dorothy Sexton, the Salesmanship class gained practical experience in store retailing in the carrying on of all the phases of the school store. As the store is ideally located across from the library, the class made good use of its position with their attractive window displays.

The store featured school supplies, sweatshirts, and many novelties. The stuffed animals bearing the high school emblem proved to be an especially fast-selling item, particularly at Christmas time.

The Salesmanship class hopes that this, their initial year, will set a precedent for future Salesmanship classes.



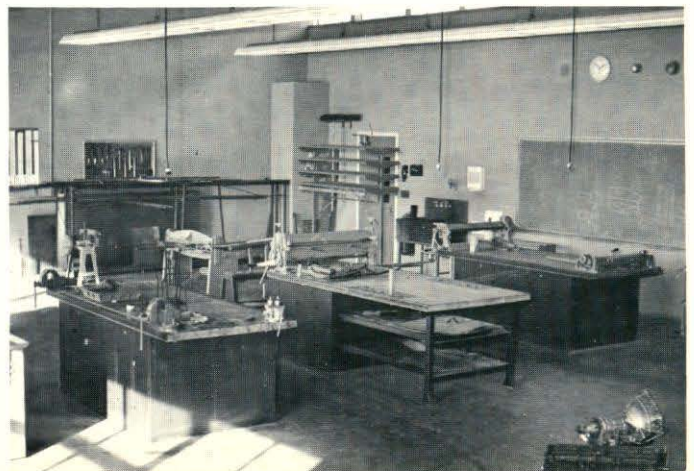
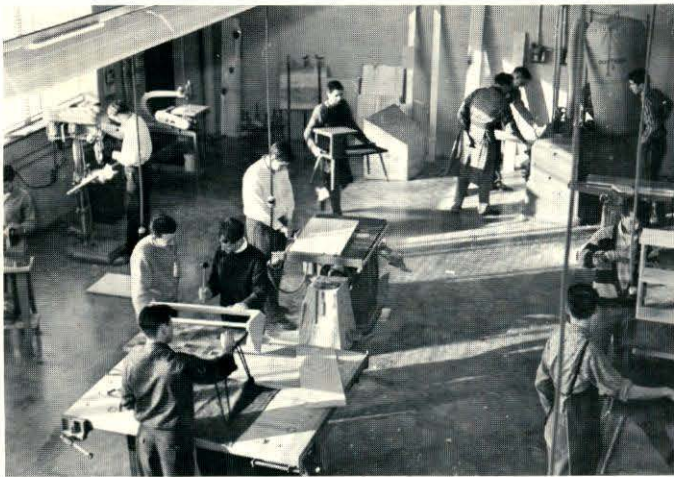
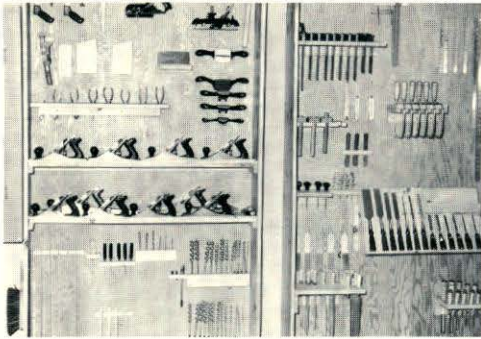
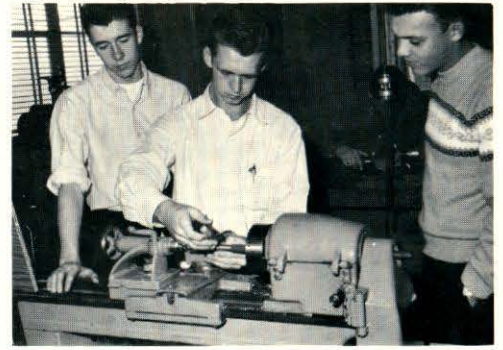
# Class

Cheryl Armitstead	leaves	the office to Linda House
Gloria Auger	leaves	her petiteness to Bobby Lyons
Evelyn Avila	leaves	her thick novels to Steve Kelly
Linda Ayers	leaves	few telephone poles standing
Cynthia Banks	leaves	for Peter Bent Brigham Hospital
Donald Barker	leaves	his cast to the Hi-Hat
Richard Beauregard	leaves	his post outside Rm. 207 unguarded
William Beliveau	leaves	U. S. History — often
Norma Bell	leaves	her athletic ability to Elaine Gagnon
Kathryn Bernacki	leaves	her Dairy Whips to the hockey team
Laural Ann Berry	leaves	her secrets to Judy McGovern
Roger Blomgren	leaves	the football field to Bob Gleason
Albert Boudreau	leaves	his Purity apron to Blake Moller
Carole Bowser	leaves	Godins' to Carol Larson
Barbara Burkinshaw	leaves	5th period in a hurry
Gerard Buteau	leaves	his red beret to Fred Lytle
Nancy Carey	leaves	her place at Dillons' — vacant
Wesley Carkin	leaves	his tall tales to willing listeners
Gary Caron	leaves	Mr. Hankinson in peace
Sheila Cassidy	leaves	her horse in a green pasture.
Carlton Clark	leaves	for teachers college
Kathleen Clark	leaves	after faithful service in the guidance department
Patricia Connor	leaves	her gift of song to next year's talent show
John Conway	leaves	his unassuming ways to the noisy freshmen
Wendy Cooke	leaves	her umbrella to the next minstrel show
James Cosette	leaves	for Rolands'
John Cullen	leaves	his paint brush to Susan Burke
Catherine Curran	leaves	her tidy ways to Bob Mason
Colleen Daron	leaves	her sweaters to Louise Quinn
Paula DeBarge	leaves	the guidance office empty
Joan Decatur	leaves	her sewing talents to Mrs. Ovitt
Muriel Deering	leaves	much to the dismay of faculty and students
James Delaney	leaves	the films unspliced
Joan DeSelle	leaves	her IBM machine in Room 204
Elaine Dionne	leaves	for Florida for the winter
David Dirubbo	leaves	in which car?
Carlyn Dittmer	leaves	few notes unplayed
Barry Donaldson	leaves	his curly hair to James Doyle
Joan Donoghue	leaves	her library slips to Douglas Wyman
John Dorsey	leaves	much to the distress of football fans
Edwin Drescher	leaves	his personality to Howard Swenson
Patricia Dunlavey	leaves	on an empty gas tank
Sandra Duppe	leaves	her chatter to the twins. Do they need it??
Walter Dyke	leaves	his height to Eddie Gendron
Geraldine Eaton	leaves	a tape measure to the next cap & gown committee
Joanne Egan	leaves	her smile to the student body on Monday mornings
Ronald Engel	leaves	for Greenwich Village
Douglas Eno	leaves	his farming ability to Bob Goodwill
Clarence Fanning	leaves	his mechanical talents to Robert Nebes
David Farrow	leaves	his homeroom comments to Sandy Morton
Frederick Field	leaves	French III with supersonic speed
Mary-Jo Fisher	leaves	all bowling pins upright
Michele Foster	leaves	her Modern Problems homework to needy Juniors
Diane French	leaves	her N. H. S. name tags to Miss Booth
Carole Gibbons	leaves	her artistic ability to Mr. Bettes
James Gifford	leaves	for Nashua
Alan Gould	leaves	his railing bent in the wrong direction
Jo-Ann Gravelle	leaves	the 4-H to Nancy Lewis
Estelle Grondine	leaves	the mimeograph tired
Vaughn Hadley	leaves	the underclassmen confused backstage
Raymond Haithwaite	leaves	his motorbike to the Track Team
Edward Hall	leaves	for the Navy
Ann Hansen	leaves	her twirler's boots to Sandra Nelson
Jane Hansen	leaves	"for the East"
Marilyn Harper	leaves	her sense of humor to Leroy Kelley
Judith Harrington	leaves	for Bentley with her eraser
John Hart	leaves	the paper shelf in Rm. 209 empty
Timothy Hehir	leaves	his expert driving to Mr. K.
Bruce Hicks	leaves	to wield a paint brush
Nancy Holmes	leaves	her many talents to Janet Cali
Ronald Horan	leaves	his car to the Registry
Carolyn Horstman	leaves	her serenity to Roberta Medin
Richard Hoxie	leaves	buzzes off in his Hornet

# Will

Jean Hundt	leaves	for the Lone Star State
Arthur Kirk	leaves	in his Renault — Beep! Beep!
Frances Kneeland	leaves	to be an airline hostess
Judith Knowles	leaves	her typewriter worn out
David Kydd	leaves	Ken's gas pumps empty
Charles Laughton	leaves	the Corrective Room
Barbara Lebedzinski	leaves	her science exhibits to Bruce Manning
Karen Lee	leaves	her spoolies to Judith Wyman
Eunice LeMasurier	leaves	for the University of Massachusetts
Elaine Littlefield	leaves	for bigger fields
James Logan	leaves	his drawing board to future draftsmen
Robert MacKinnon	leaves	fifth period study gratefully
George MacLauchlan	leaves	with his drawing tools
Rose MacQuesten	leaves	to exchange her rings
David Majeau	leaves	his car in the shop unfinished
Louise Manahan	leaves	taking a trail of laughter
Richard Manseau	leaves	in his Merc.
David Marshall	leaves	for the Air Force
Louis Masson	leaves	"chewy Louie" to WMEX
Raymond McEnaney	leaves	still running for Track
Ronald McSheehy	leaves	French to the Irish
Wayne Medeiros	leaves	for Gallagher Square
Mary Michalowski	leaves	her pretty hairdo to Freshman girls
Gertrude Morris	leaves	her roller skates to time-pressed Juniors
Roberta Mortali	leaves	her chronic laryngitis to Donna Pomerleau
Barbarann Niemaszyk	leaves	her baton to Karen Harvey
Ralph Nolet	leaves	for a future in Phys. Ed.
Joseph Oczkowski	leaves	as quietly as he came
Geraldine Olsen	leaves	for York Beach
Maureen O'Rourke	leaves	many activities to Nola Breault
Joan O'Sullivan	leaves	her pep to Nancy Curley
Edward Perry	leaves	happily
Linnea Peterson	leaves	the basketball in the basket
Thomasina Phelps	leaves	for Chandler and more fun
Peter Picken	leaves	his skis to Sharon Welch
Mary Pigeon	leaves	her hockey stick to Pat Craig
Patricia Pope	leaves	as a pupil to return as a teacher
Ernest Pouliot	leaves	his cameras to future shutter bugs
Sally Prescka	leaves	Mr. Betses in peace
Dennis Ready	leaves	his jokes to Johnny Cahill
John Redican	leaves	the Dramatic Club in a shamble
Doris Reid	leaves	her business ability to Connie Freeman
Sara Remick	leaves	her lovely voice to the Glee Club
Diana Ricciardi	leaves	the Junior Red Cross to willing workers
Paul Riessle	leaves	the gym to athletic Juniors
Lillian Rondeau	leaves	the Debating Club to Harris Bacon
Judith St. Pierre	leaves	"Elizabeth" to the machine shop
David Sarre	leaves	a few problems in Business Law unsolved
Martha Shay	leaves	her shakers to the school store
Beverly Silva	leaves	for the Azores — love problems unsolved
John Southwick	leaves	in search of a tardy slip
Gwendolyn Spinazola	leaves	to better the business world
Joseph Spinazola	leaves	a victorious basketball record to Ken Koch
James Stamp	leaves	for Bill Riggs'
Joseph Staveley	leaves	with his camera clicking
Priscilla Staveley	leaves	her morning marathon to Carolyn
Beverly Stearns	leaves	her oratorical talents to Phil Currier
Daniel Sullivan	leaves	his artistic ability to next year's yearbook staff
Robert Talbot	leaves	his set shots to "Chuckie Cooke"
Robert Theriault	leaves	many library books well-thumbed
Constance Tousignant	leaves	her unfinished French to Danny Leslie
Marion Tower	leaves	for California
Elizabeth Vaipan	leaves	her leadership to all who follow
Linda Vincombe	leaves	in confusion
Barbara Walker	leaves	continuous chatter to the chipmunks
Carolyn Walker	leaves	for "Green Mountain"
Frederick Wetmore	leaves	for the sunny South
Louise Whalen	leaves	to be a cosmetologist
Warren Whitcomb	leaves	with a gay "adios amigos"
Alvin Wolcott	leaves	his famed signature to John Hancock
Andrew Wolfgang	leaves	his basketball sneakers to Brad Perham
Kelvin Worthley	leaves	for the Continent
Judith Zabierek	leaves	for L. T. C.
Patricia Znoj	leaves	her audience in suspense

# Shop Department



# Home Economics Department



# That'll Be the Day

Cheryl Armitstead	doesn't have a chauffeur
Gloria Auger	walks with someone her own size
Evelyn Avila	leads a jazz band
Linda Ayers	totes a small purse
Cynthia Banks	becomes an avid physicist
Donald Barker	sheds his cast
Richard Beauregard	becomes a behavior problem
William Beliveau	stops mixing up books in lockers
Norma Bell	deserts "Sherman"
Kathryn Bernacki	finds her CHS-NHS notes
Laural Ann Berry	stays within the speed limit
Roger Blomgren	becomes a bolshei dancer
Albert Boudreau	becomes a draftsman
Carole Bowser	fails to meet the deadline for the Press Club
Barbara Burkinshaw	is melancholy
Gerard Buteau	dons a derby
Nancy Carey	is not a news hound for Press Club
Wesley Carkin	does not have a ready answer
Gary Caron	does not chirp from CHS
Sheila Cassidy	gives up horses and rides an elephant
Carleton Clark	is a "wise guy"
Kathleen Clark	fails to offer assistance
Patricia Connor	doesn't begin the day with a "Joan" conference
John Conway	is a test pilot
Wendy Cooke	no longer says "for Christmas sake**!!"
James Cossette	becomes a scientist
John Cullen	stays in the library
Catherine Curran	creates a riot
Colleen Daron	voluntarily dons spectacles
Paula Debarge	no longer is interested in Nash Ramblers
Joan Decatur	stops giggling
Muriel Decring	bowls 110
James Delaney	goes to study hall
Joan DeSelle	wears a potato sack
Elaine Dionne	is a home-body
David Dirubbo	has just <i>one</i> jalopy
Carlyn Dittmer	becomes a "back seat driver"
Barry Donaldson	gets a crew cut
Joan Donoghue	lets her fudge burn
John Dorsey	is without a pair of skis
Edwin Drescher	stops clowning
Patricia Dunlavey	gets her hair cut
Sandra Dupee	joins the "Johnny Rebs"
Walter Dyke	ceases to be the opposition
Geraldine Eaton	donates caps and gowns
Joanne Egan	walks the corridors alone
Ronald Engel	can not change a light bulb
Douglas Eno	replaces Fabian
Clarence Fanning	has a brand new car
David Farrow	runs out of gossip
Frederick Field	stops whistlin'
Mary-Jo Fisher	has stage fright
Michele Foster	becomes a bill collector
Diane French	leaves an error uncorrected
Carole Gibbons	has a passé hair-do
James Gifford	travels slowly in the family chariot
Alan Gould	passes up a fishing trip to Sunapee
Jo Ann Gravelle	moves to the city
Estelle Grondine	is a beatnik
Vaughn Hadley	buys an American car
Raymond Haithwaite	shuns stage work
Edward Hall	loses interest in sports
Ann Hansen	shops at Alexander's
Jane Hansen	does not have that happy smile
Marilyn Harper	isn't merry and gay
Judith Harrington	misses a football game
Michael Hart	lacks clothing
Timothy Hehir	is not a leader
Bruce Hicks	is overly ambitious
Nancy Holmes	is unchallenged
Ronald Horan	gets his car registered
Carolyn Horstman	does not have her homework done
Richard Hoxic	raises a rumpus

# That'll Be the Day

Jean Hundt	loses her Southern dra-a-awl
Arthur Kirk	stays to watch a whole game
Frances Kneeland	is six feet tall
Judith Knowles	is interested in Tom, Dick, or Harry
David Kydd	starts walking
Charles Laughton	loses his friends
Barbara Lebedzinski	has time to spare
Karen Lee	isn't just taking her time
Eunice LeMasurier	goes the right way up a one-way street
Elaine Littlefield	falls in love with a jockey
James Logan	is on time
Robert MacKinnon	is just an ordinary guy
George MacLauchlan	isn't just a "ham"
Rose MacQuesten	becomes the "life of the party"
David Majeau	gets to school before the bell rings
Louise Manahan	drives a Volkswagen
Richard Manseau	enjoys school
David Marshall	joins the Army
Louis Masson	turns "cop"
Raymond McEnaney	is not neatly attired
Ronald McSheehy	is speechless
Wayne Medeiros	stays in Chelmsford
Mary Michalowski	shops at Bon Marché
Gertrude Morris	is not argumentative in English
Roberta Mortali	has a strong voice
Barbarann Niemaszyk	is not sociable
Ralph Nolet	skips gym
Joseph Oczkowski	leaves home room slowly
Geraldine Olsen	has perfect attendance
Maureen O'Rourke	becomes a sloppy dresser
Joan O'Sullivan	stops waiting for weekends
Edward Perry	does his homework
Linnea Peterson	becomes a ballet dancer
Thomasina Phelps	isn't smiling
Peter Picken	has no gum
Mary Pigeon	gets caught between the parallel bars
Patricia Pope	fails to attend a party
Ernest Pouliot	misses a picture
Sally Prescka	gets the dictation
Dennis Ready	is somber and serious
John Redican	misses a chance for a joke
Doris Reid	fails a test
Sally Remick	is conventional
Diana Ricciardi	takes things calmly
Paul Riessle	fails to consult Webster
Lillian Rondeau	shuns office work
Judith St. Pierre	stops her letter writing marathon
David Sarre	works at Donovan's
Martha Shay	rivals Roget's Thesarus
Beverly Silva	is seen without Judy and Eunice
John Southwick	is not manufacturing excuses
Gwendolyn Spinazola	has a limited wardrobe
Joseph Spinazola	loses his admirers
James Stamp	forgets to take his bow in class
Joseph Stavely	forgets to ask for class dues
Priscilla Stavely	loses her out-of-town interest
Beverly Stearns	gets a failing grade
Daniel Sullivan	isn't in the audio-visual aids room
Robert Talbot	forgets locker combinations
Robert Theriault	leaves the bowling pins standing
Constance Tousignant	is a straight-haired blonde
Marion Tower	frowns
Elizabeth Vaipan	loses her charm
Linda Vincombe	hurries
Barbara Walker	has her note for absence on time
Carolyn Walker	remembers to turn her headlights on
Fred Wetmore	loses his disposition
Louise Whalen	does not have a car of her own
Warren Whitcomb	fails to maintain his viewpoint
Alvin Wolcott	doesn't say "scuse me!"
Andrew Wolfgang	has long wavy hair
Kelvin Worthley	does a job half-heartedly
Judith Zabierek	stops writing notes
Patricia Znoj	is calm, cool, and collected

# Library



# Art Department







This is Pizza?



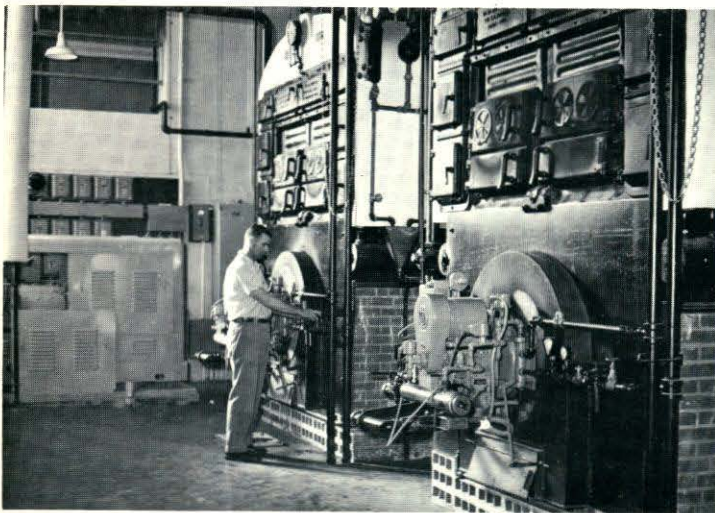
We'll Be Passing Mars Soon!



Recording Time in 5 Minutes



This is the Ignition



Who Said Richard Lahue Was Lost?



Who Drank All the Coffee??



What a Gay Looking Group!



This isn't coffee I'm pouring



Now Children!!!



Take Me to Your Leader



Somebody Left in a Hurry!



Don't Get Impatient!



Just The Finishing Touches



No! This Isn't the Soda Fountain



Income Tax Deadline Is April 15th



Watch the Fingers!



Gee Fellas! Where Are the Girls?



We'll Put a Clamp Here



Now, We'll Study!



One, Two, Three, Strut



Dedication of the New Athletic Field



Mr. Shepard Will Inspect Your Schools in June



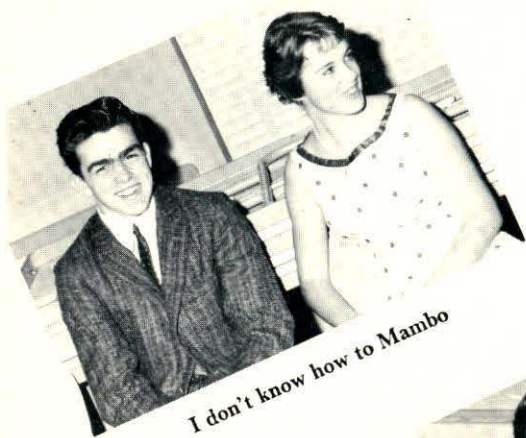
Who is Jimmy Hoffa??



Is This What You're Looking For



Our Teens Against Polio!



I don't know how to Mambo



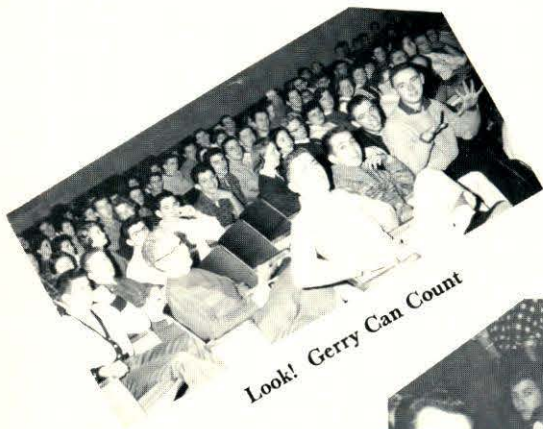
Want to Dance



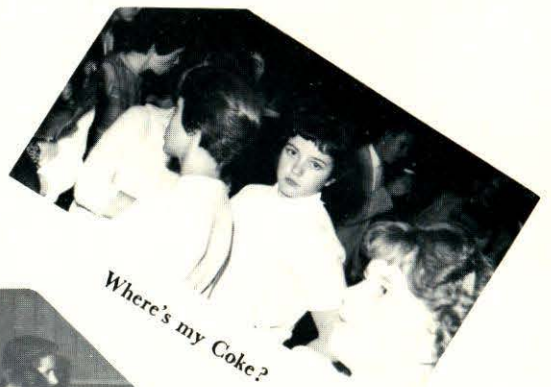
They're Always Taking Our Picture!



Stairway to Heaven



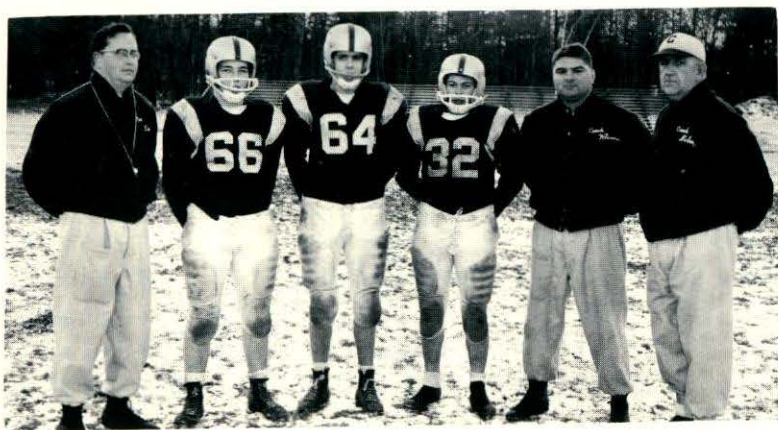
Look! Gerry Can Count



Where's my Coke?



That Was a Good One!!



# Class

Armitstead, Cheryl	71 Proctor Road	South
Auger, Gloria J.	93 Hall Road	Center
Avila, Evelyn M.	15 Gay Street	North
Ayers, Linda R.	31 Concord Road	Center
Banks, Cynthia J.	92 Acton Road	Center
Barker, Donald	2 Harvey Road	Center
Beauregard, Richard O.	22 Ripley Street	North
Beliveau, William M.	3 Harold Street	Center
Bell, Norma I.	5 North Road	Center
Bernacki, Kathryn	19 Columbus Avenue	East
Berry, Ann	108 Warren Avenue	Center
Blomgren, Roger	16 Oak Knoll Avenue	East
Boudreau, Albert J.	7 Harding Street	North
Bowser, Carole M.	109 Park Road	South
Burkinshaw, Barbara V.	4 Brentwood Road	Center
Buteau, Gerard L.	9 Delwood Road	Westlands
Carey, Nancy J.	271 Mill Road	East
Carkin, Wesley H.	51 Swain Road	North
Caron, Gary J.	33 Sixth Avenue	North
Cassidy, Sheila M.	38 Washington Street	North
Clark, Carlton B.	17 Woodbine Street	Westlands
Clark, Kathleen M.	3 Warren Avenue	Center
Connor, Patricia A.	24 Warren Avenue	Center
Conway, John F.	3 Moore Street	East
Cooke, Wendy B.	50 Acton Road	Center
Cossette, James	Shore Drive	North
Cullen, John J.	2 Moonbeam Avenue	Center
Curran, Catherine G.	997 Princeton Boulevard	North
Daron, Colleen A.	113 Turnpike Road	Center
DeBarge, Paula J.	8 Grove Street	Center
Decatur, Joan L.	19 Housatonic Avenue	Westlands
Deering, Muriel	17 Erlin Road	Westlands
Delaney, James G.	14 Evergreen Street	Westlands
DeSelle, Joan E.	22 Beech Street	North
Dionne, Elaine M.	71 Acton Road	Center
Dirubbo, David A.	131 Groton Road	North
Dittmer, Carlyn L.	14 Bradford Road	West

# Directory

Donaldson, Barry R.	43 Warren Avenue	Center
Donoghue, Joan M.	66 Smith Street	Westlands
Dorsey, John C.	55 Dunstable Road	North
Drescher, Edwin H.	9 Stedman Street	Westlands
Dunlavey, Patricia A.	33 Groton Road	North
Dupee, Sandra F.	22 Woodbine Street	Westlands
Dyke, Walter	16 Parkhurst Road	Center
Eaton, Geraldine P.	8 Pine Street	Center
Egan, Joanne E.	44 First Street	Center
Engel, Ronald E.	10 Ideal Avenue	Westlands
Eno, Douglas F.	301 Boston Road	Center
Fanning, Clarence G.	480 Acton Road	South
Farrow, David H.	67 North Road	Center
Field, Frederick C.	89 Park Road	South
Fisher, Mary J.	9 Bradford Road	North
Foster, Michele M.	22 Holt Street	North
French, Diane E.	26 Woodbine Street	Westlands
Gibbons, Carole A.	28 Blodgett Park	North
Gifford, James K.	24 Madeline Terrace	Tyngsboro
Gould, Burton A.	8 Kenwood Street	South
Gravelle, Jo-Ann C.	170 Acton Road	South
Grondine, Estelle M.	68 Ledge Road	North
Hadley, Vaughn E.	7 Clinton Avenue	Westlands
Haithwaite, George R.	14 Maple Avenue	Westlands
Hall, Edward F.	15 Hope Street	North
Hansen, Ann E.	9 Arbor Road	North
Hansen, Jane L.	7 Fern Street	Westlands
Harper, Marilyn J.	20 Quigley Avenue	North
Harrington, Judith A.	11 Lynn Avenue	North
Hart, John M.	32 Sunset Avenue	Westlands
Hehir, Timothy J.	27 Church Street	North
Hicks, Bruce E.	9 Jordan Road	West
Holmes, Nancy D.	163 Park Road	South
Horan, Ronald M.	212 Chelmsford Street	Westlands
Horstman, Carolyn E.	3 East Sheppard Lane	Westlands
Hoxie, Richard	326 Acton Road	South
Hundt, Jean C.	163 Mill Road	South



# Class

Kirk, Arthur S.	213 Princeton Street	North
Kneeland, Frances A.	13 Third Street	Center
Knowles, Judith E.	35 Golden Cove Road	Center
Kydd, David N.	57 Newfield Street	North
Laughton, Charles A.	5 Richardson Road	North
Lebedzinski, Barbara	127 Groton Road	North
Lee, Karen	8 Marrion Street	Center
LeMasurier, Eunice A.	49 Mission Road	North
Littlefield, Elaine P.	20 Priscilla Avenue	Westlands
Logan, James S.	15 Grey Street	North
MacKinnon, Robert C.	7 Leedberg Street	North
MacLauchlan, George S.	Garrison Road	South
MacQuesten, Rose Marie	25 Main Street	North
Majeau, David C.	5 Woodlawn Avenue	Westlands
Manahan, Louise	36 Ledge Road	North
Marshall, David A.	44 Warren Avenue	Center
Masson, Louis J.	175 Princeton Street	North
McEnaney, Raymond P.	56 Gay Street	North
McSheehy, Ronald F.	17 Tobin Avenue	North
Medeiros, Wayne A.	13 Stearns Street	East
Michalowski, Mary L.	60 Washington Street	North
Morris, Gertrude M.	48 Middlesex Street	North
Mortali, Roberta N.	3 Glen Avenue	Westlands
Niemaszyk, Barbarann	55 School Street	West
Nolet, Ralph B.	9 B Street	Westlands
Oczkowski, Joseph C.	238 Billerica Road	Center
Olsen, Geraldine S.	20 Blodgett Park	North
O'Rourke, Maureen K.	255 Groton Road	North
O'Sullivan, Joan E.	5 Perham Road	Center
Perry, Edward A.	43 Randall Street	East
Peterson, Linnea	11 Bradford Road	North
Phelps, Thomasina L.	3 Moonbeam Avenue	Center
Picken, Peter C.	12 Middlesex Street	North
Pigeon, Mary L.	107 Steadman Street	Westlands
Pope, Patricia L.	88 Littleton Road	Center
Pouliot, Ernest H.	189 Chelmsford Street	Westlands

# Directory

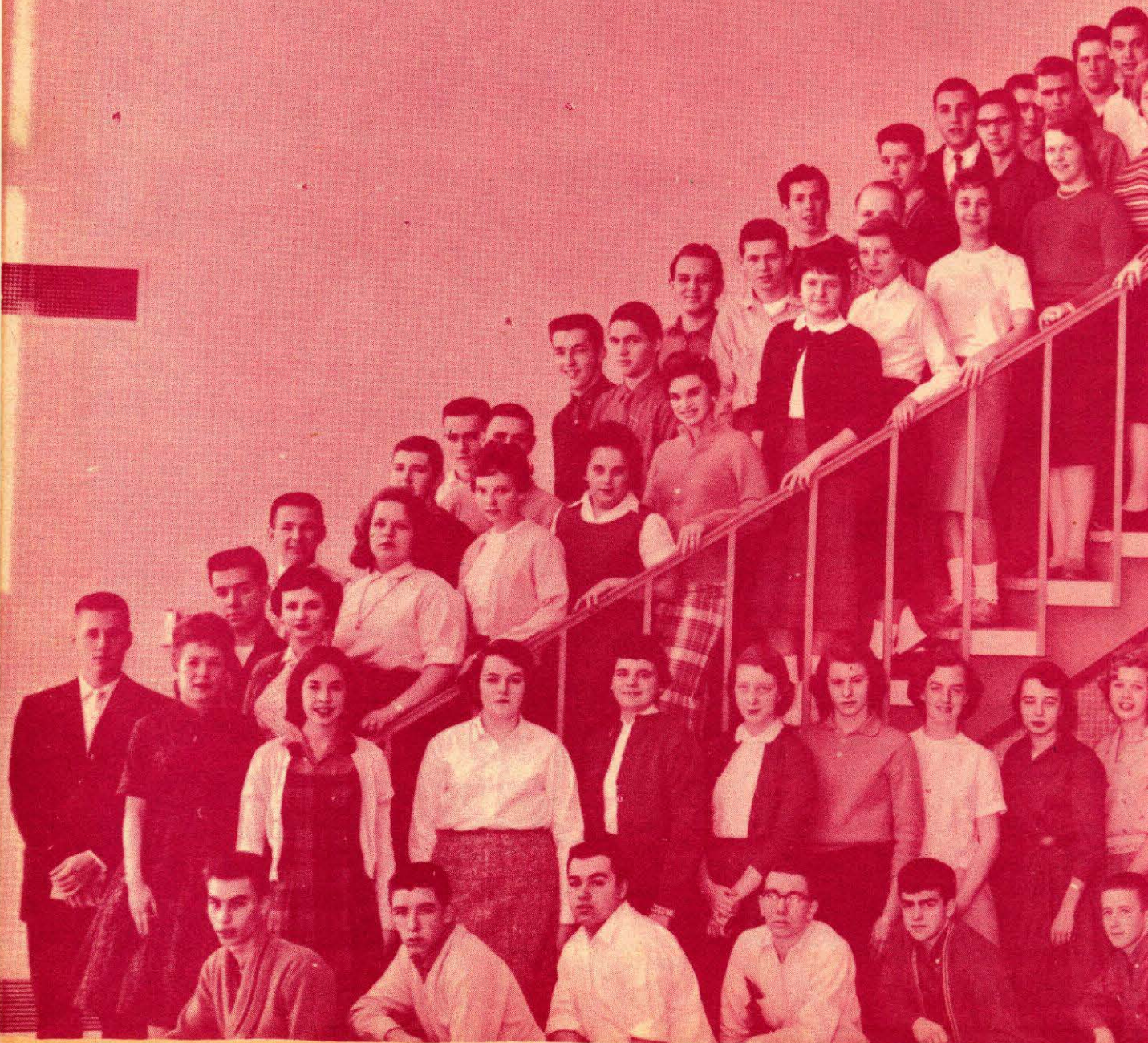
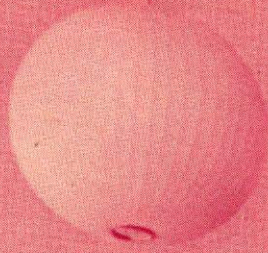
Prescka, Sally A.	15 Newfield Street	North
Ready, Dennis J.	9 Turnpike Road	Center
Redican, John E.	15 Hall Road	Center
Reid, Doris E.	215 Littleton Road	Center
Remick, Sara L.	219 Westford Street	Center
Ricciardi, Diana L.	47 Groton Road	North
Riessle, Paul A.	48 Blodgett Park	North
Rondeau, Lillian E.	10 Wesley Street	Center
St. Pierre, Judith M.	3 Beaulieu Street	East
Sarre, David R.	181 North Road	Center
Shay, Martha J.	6 Colonial Drive	Center
Silva, Beverly A.	24 Moore Street	East
Southwick, John S.	60 Hall Road	Center
Spinazola, Gwendolyn F.	10 Rogers Road	North
Spinazola, Joseph J.	109 Wightman Street	North
Stamp, James S.	35 Montview Road	Center
Staveley, Joseph E.	216 Main Street	West
Staveley, Priscilla E.	37 Glen Avenue	Westlands
Stearns, Beverly J.	40 Sheppard Lane	Center
Sullivan, Daniel J.	63 Groton Road	North
Talbot, Robert A.	43 Middlesex Street	North
Theriault, Robert J.	9 Dartmouth Street	North
Tousignant, Constance A.	22 Wotton Street	North
Tower, Marion E.	6 Albina Street	East
Vaipan, Elizabeth A.	221 Billerica Road	Center
Vinecombe, Linda L.	16 Robin Hill Road	Center
Walker, Barbara M.	68 School Street	West
Walker, Carolyn J.	64 Dunstable Road	North
Wetmore, Fred	61 Tyngsboro Road	North
Whalen, Louise B.	8 Proctor Road	South
Whitcomb, Warren R.	5 Colonial Terrace	Center
Wolcott, Alvin P.	397 Acton Road	South
Wolfgang, Andrew T.	36 Concord Road	Center
Worthley, Kelvin A.	42 Sylvan Avenue	Westlands
Zabierek, Judith A.	93 Dalton Road	Center
Znoj, Patricia A.	124 Turnpike Road	Center



Curtain Time  
*Talent Show*



Chelmsford Public Library  
25 Boston Road  
Chelmsford, MA 01824



Caretory  
A good  
Flyer. The who  
unhappy who  
Folly. Betty  
Rachy

