

The LION







The Class of 1957

proudly presents

THE LION

Chelmsford High School

CHELMSFORD

MASSACHUSETTS

Foreword

THE LION is many things to many people.

To the Seniors, it is the epitome of four wonderful years.

To the Underclassmen, it is the cherished goal of their rugged years ahead.

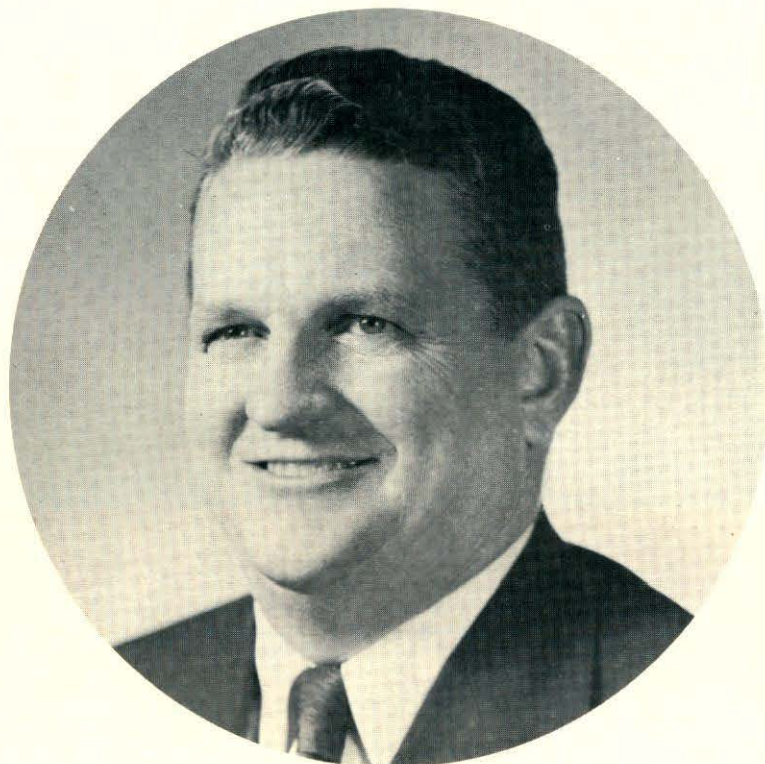
To the Graduates, it is an opportunity to recall the years gone by.

To the Parents, it is a tangible record of the achievements and activities of their children.

To all, it is a collection of memories never to be forgotten.

Dedication To...

Our Principal



In recognition of

his leadership in the fulfilling of our ideals of community living,
his leadership in the understanding of the concepts of education
and their application to our daily life, and
his leadership in the development of our lives through his interest
in us as individuals, his appreciation of our weakness and strength,
and his wisdom in guiding us,

we,

The Class of 1957,
dedicate this, our yearbook,

to

JOHN T. CONRAD
Principal and Friend

Chelmsford High School



LOOKING AHEAD

Let's face the year with courage, faith, and hope
When under darkening skies we seem to grope,

One thought can set us free:

The best is yet to be.

To do the task that lies at hand today,
To share the joy of friends along the way

Will lift our eyes to see

The best is yet to be.

We cannot know the path that lies before,
The heights and depths the future holds in store.

Let's strike this major key:

The best is yet to be.

We know full well we cannot live by sight
And sense alone, but by that clearer light

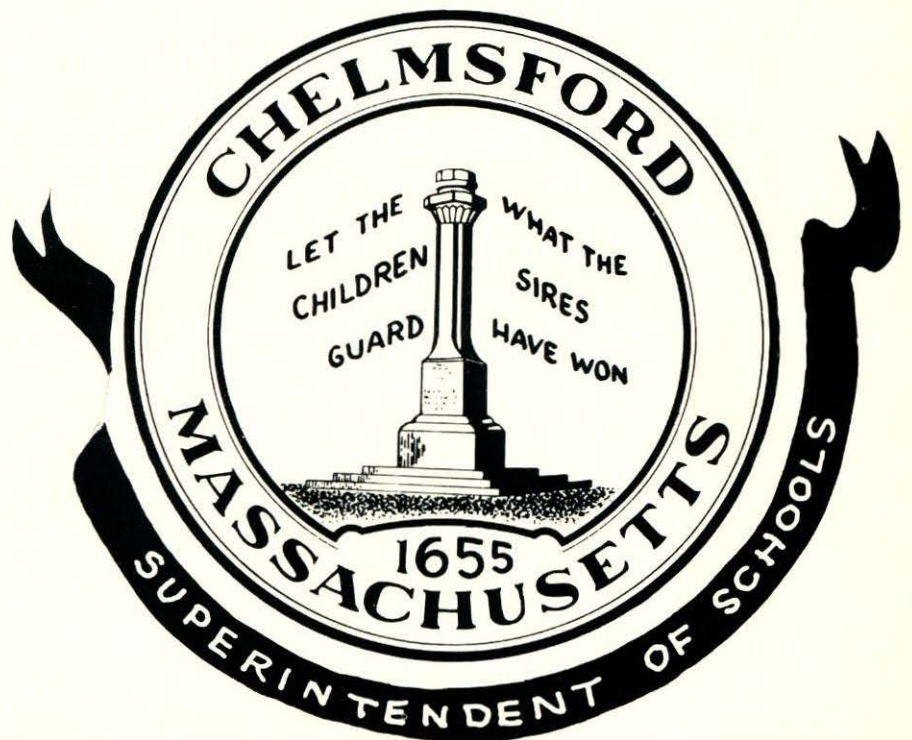
Revealed to you and me:

The best is yet to be.

CHAS. G. REIGNER



THOMAS L. RIVARD



CHELMSFORD

LET THE CHILDREN
GUARD WHAT THE
SIRENS HAVE WON

MASSACHUSETTS

1655
SUPERINTENDENT OF SCHOOLS

Our Challenge

Today we have reached an important milestone in our lives—graduation. Until now, our parents, teachers, and clergy have encouraged and guided us; they have helped us develop our talents to the highest degree; they have done everything in their power to prepare us for life. Now it is up to us. We are fortunate to live in a country where the fine education available to us may be used as we will. It is our privilege and our duty to repay our nation by using our talents wisely. The abilities that have been developing in us all our lives must now be put to their best possible use. Every one of us has some influence—it may be great, it may be small—on those around us. We must remember that the force we exert regardless of its magnitude must be for good—for the greatest good of the greatest number—or else it ceases to be worthwhile. The world of tomorrow is our world; it is what we make it. "Today we follow, tomorrow we lead".

Board of Editors



Linda Brown
Janice Brown
Joan Bujnowski
Lila Crowley
John Flavell
Peter Goodwill
Marilyn Hicks

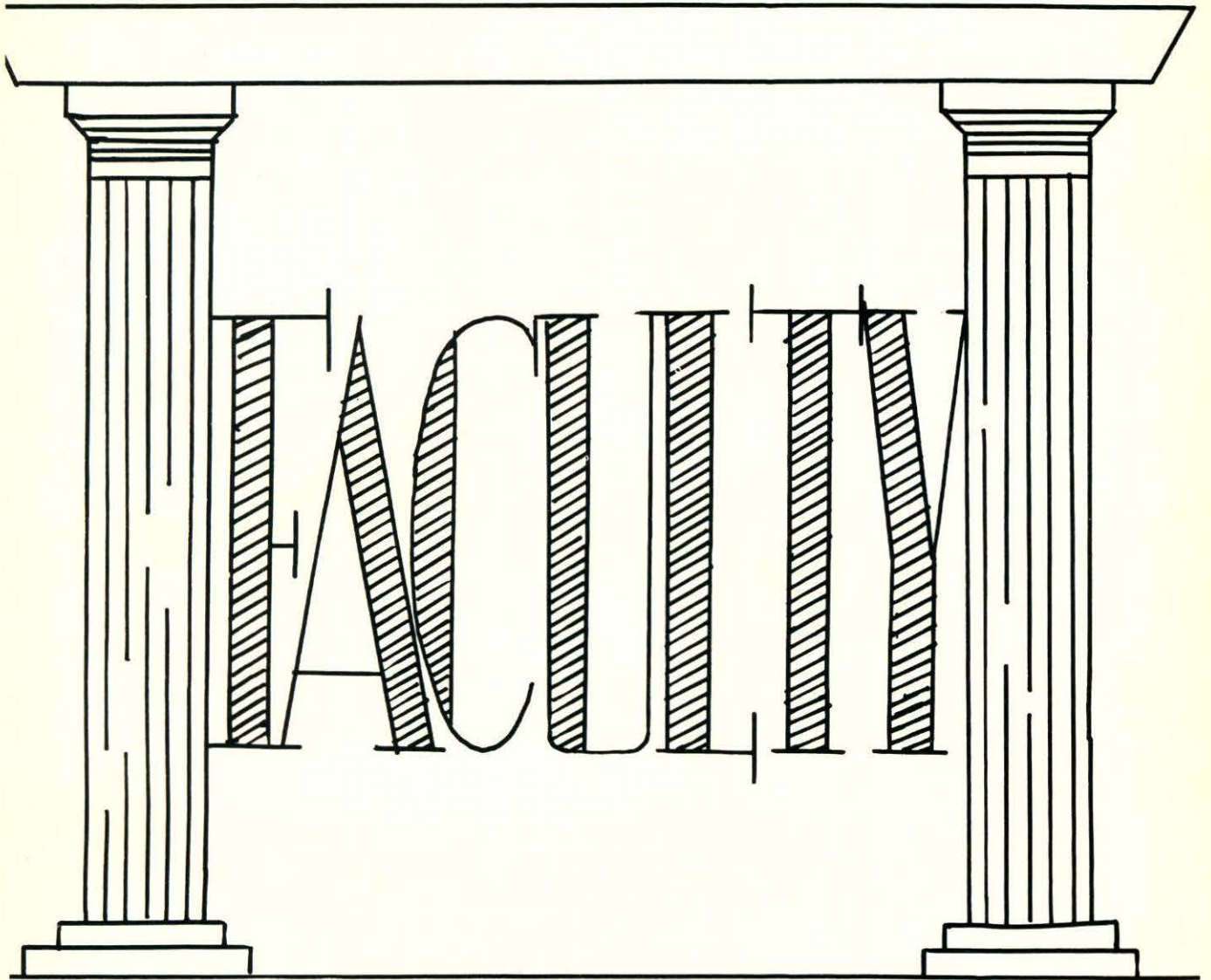
Robert Ingalls
Geraldine Keddie
Paul McIntire
Sandra Ricciardi
Kathryn Thomas
Claire Watt
Sandra Witts

BUSINESS ADVISERS — Ernestine Maynard, C. Edith McCarthy
LITERARY ADVISER — Helen R. Poland

All of us are destined to go our separate ways in this—our graduation year. We have lived together, laughed together, and studied together—we shall continue to do these things the rest of our lives. None of us will be able to retrace these four years of our youth, but this book offers us a chance to recall these cherished memories. As we gaze upon its pages, we shall live again the days of our youthful trials, joys, and affections.







JOAN BUJNOWSKI



Our Faculty



F. Christine Booth, A. B.
Latin
Colby College



C. Edith McCarthy, B. S. Ed.
Vice Principal
Bookkeeping - Typewriting
Salem Teachers College



Ernestine Maynard, B. S. Ed.
Secretarial Practice - Stenography
Salem Teachers College



Helen R. Poland, A. B.
English
Boston University



Charlotte S. Carriel, B. A., Ed., M.
English
Mount Holyoke College
Fitchburg State Teachers College

*"For high resolve and noble thought,
For wholesome lessons wisely taught,
Give gratitude and thanks."*



Marjorie B. Scoboria, B.A., M.A.
Mathematics
Wellesley College
Radcliffe College



Murray B. Hicks, B. S.
Chemistry, Physics
Massachusetts State College



Mildred M. Hehir, A. B., Ed. M
French
Regis College
Fitchburg State Teachers College



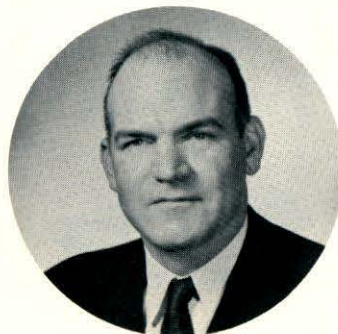
Shirley H. Hardy, B. S. Ed.
Typewriting - Bookkeeping
Boston University



Joseph P. Nolan, B. S.
Mathematics
Social Studies
Canisius College



John J. Dunigan, A. B., Ed. M.
Social Studies
St. Anselm's College
Boston College



Thomas Green, A. B. Ed. M.
Guidance Director
Brown University
Boston University



Costas Kevghas, A. B., M. A.
English
Suffolk University
Suffolk Graduate School



Martha F. Kinneen, A. B.
English
Emmanuel College



Francis J. Byrne, B. S. S., Ed. M.
United States History
Holy Cross College
Boston State Teachers College



Stanley J. Suchodolski, B. S.
Mechanical Drawing
Algebra, Geometry
Fitchburg Teachers College



Donald A. Hankinson, B. S., Ed. M.
Business Law - Sociology
J. B. T.
Fitchburg Teachers College



Alfred Girolamo, B. S. Ed.
General Science
Applied Science
Boston University



Margaret M. Kavanagh, A. B.
Civics
English
Emmanuel College



Vincent C. Foderaro, B. A.
Biology
Suffolk University



Walter J. Kirby, B. S., Ed. M.
Mathematics, Science
Columbia University



Paul E. Bordelcau, B. M., M. M., Ed.
Band and Glee Club Director
N. E. Conservatory of Music
Boston University



Eugene G. Macomber, B. S.
Director of Boys' Physical Education
Drake University



Carol J. Murphy, B. S.
Director of Girls' Physical Education
University of New Hampshire



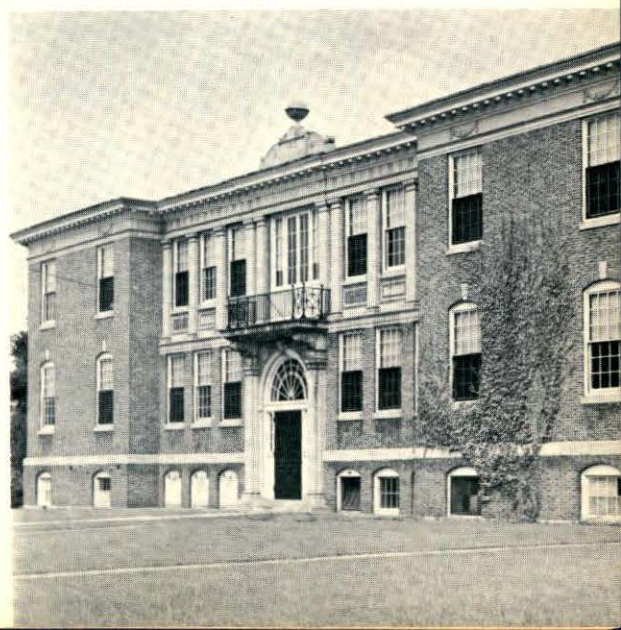
Eleanor M. O'Neil, A. B., M. A.
Director of Art Education
Regis College
Pius XII Institute, Italy



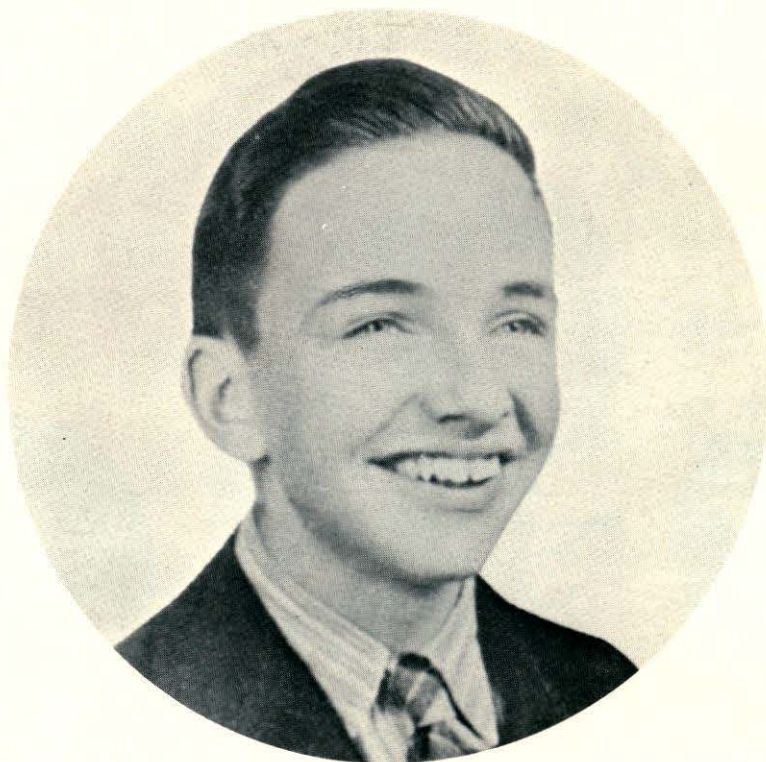
Jessie M. Groves, R. N.
School Nurse
Soldiers Memorial Hospital
Royal Victoria Hospital
Metropolitan State Hospital



Helen M. Jewett, R. N.
School Nurse
St. Joseph's Hospital
American Red Cross Nurse
(On Sick Leave)



IN MEMORIAM



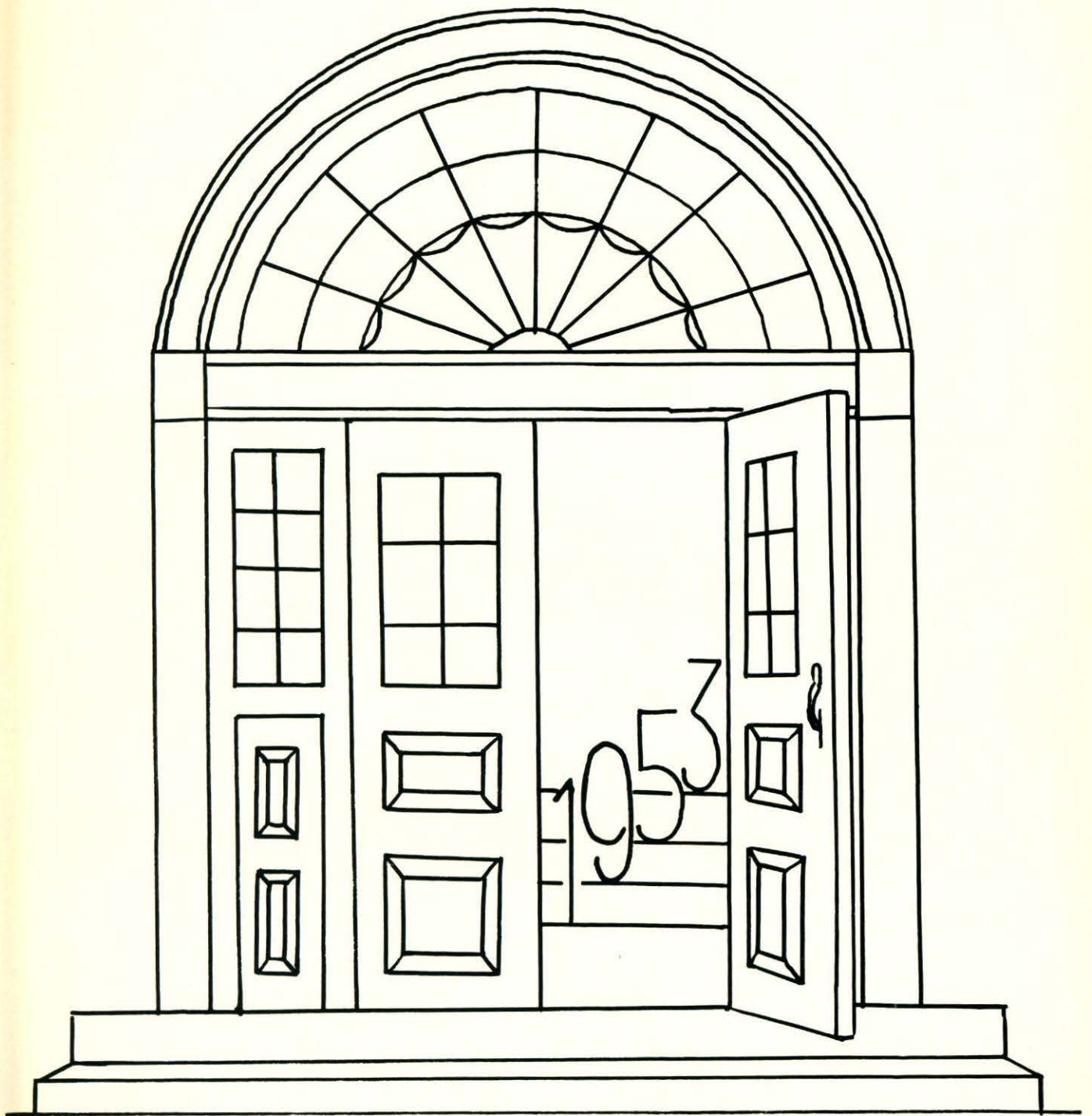
John Charles MacLeod

Born — November 28, 1938

Died — June 25, 1954

*“God calls our loved ones, but we lose not wholly
What He hath given;
They live on earth, in thought and deed, as truly
As in His heaven.”*

JOHN GREENLEAF WHITTIER



Jean Bynowski

We enter to follow...



Graduation Speakers



Cap and Gown Committee



Class Prom Committee

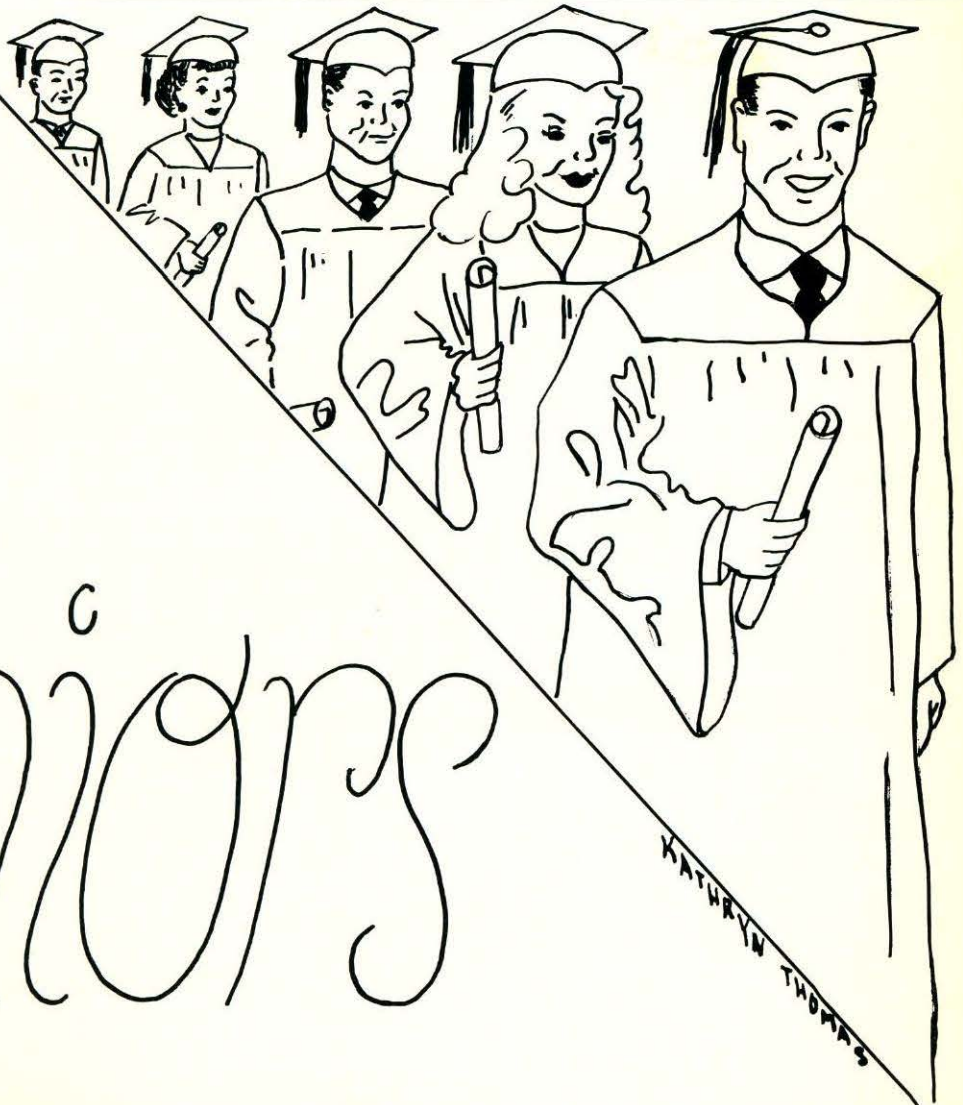


Class Day Committee

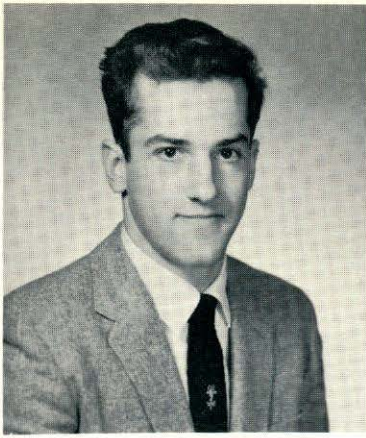


Class Motto Committee

57



Seniors



GEORGE DOUGLAS HOUSE

61 Proctor Road

South Chelmsford

Class President

- | | |
|---|----------------------------------|
| Class President 1, 2, 3, 4 | Glee Club 1, 2, 3 |
| A. A. Member 1, 2, 3, 4, Representative 1 | Football 1, 2, 3 |
| Boys' State Award 3 | Talent Show 2, 3, 4, 1st prize 2 |
| Band 1, 2, 3 | United Drive 2, 3, 4 |
| Band Concert 1, 2, 3 | Starving Seven, Band 3 |
| Student Council 3, 4 | Junior Red Cross 1, 2, 3, 4 |

"Housy"—"the meeting will now come to order"—hails from the South, of Chelmsford—heckles Dick—natural instinct for mechanics—lives for his lush lavender Lincoln—startling laugh—will definitely succeed in his chosen field, engineering.

KATHERINE PATRICIA MORROW

108 Dunstable Road

North Chelmsford

Class Vice-President

- | | |
|-------------------------------------|--|
| D. A. R. Representative | A. A. Member 1, 4, Representative 2, 3 |
| Class Secretary 1, Vice-President 3 | Student Council 1, 2 |
| Cap and Gown Committee, Chairman | Dramatic Club President 4 |
| Basketball 2, 3, Co-capt. 4 | Graduation and Reception Usher 3 |
| Field Hockey 1, 2, 3, 4 | United Drive 3, 4 |
| Softball 1, 2, 3 | Class Dance Committee 2, 3 |

"Agnus"—unsurpassed basketball captain—better late than never—a Pizza fan—does every job well—a passenger in a grey Buick—"Hey, Sandy, what'd you bring for me to eat?"—her winning smile and personality will aid in her nursing career.



PETER DENIS GOODWILL

47 Proctor Road

South Chelmsford

Class Treasurer

- | | | |
|--|-------------------------------|-------------------------|
| Class President 1 | <i>Sheffield High School</i> | Baseball 1 |
| | Basketball 1 | |
| | <i>Chelmsford High School</i> | |
| Yearbook Staff 4 | | Dramatic Club 4 |
| A. A. Member 1, 2, Representative 3, 4 | | Driver Education 3 |
| Baseball 2, 3, Captain 4 | | Booster Drive 4 |
| Basketball 3, 4. | | United Drive 3, 4 |
| Football 2, 3, 4 | | Class Dance Committee 3 |

"Pete"—always collecting \$ \$ for something or other—connoisseur of food—heap big hunter—top three letter man—co-captain of baseball—quiet? only sometimes—entertains the troops at Ken's—has a unique sense of humor—his genial manner will win him a successful future.



LILA MARGARET CROWLEY

35 Second Street

Chelmsford Center

Class Secretary

- | | |
|---------------------------------------|--|
| National Honor Society 3, President 4 | Field Hockey 4 |
| Yearbook Staff | Co-chairman ring Committee 3 |
| Class Motto Committee | Softball 3 |
| Basketball 3, Co-capt. 4 | A. A. Member 2, 4, Representative 1, 3 |
| Student Council 3 | Junior Red Cross 3, 4 |
| Graduation Usher 3 | Talent Show 3, 4 |

Full of ideas and animation!—never a dull moment—strangely attracted by Westford, and Mulligan stew—lively basketball captain—perpetual oratory—has her "Hart" set on Massachusetts General in the fall.





RONALD FRANCIS AUBREY

10 Seventh Avenue

North Chelmsford

Intramural Basketball 1
J. V. Basketball 2 - Varsity 3, 4
Football 4
Driver Education 2
Talent Show 2
Booster Club 4

Christmas Dance Committee 4
Glee Club 2
A. A. Member 1, 2, 3, 4
General Chairman of Prom 4
Junior Red Cross 1

“Ronnie”—“Lil Abner” grin—tall, dark, and gangling—three sport champ—all suburban end—“Priscilla!!”—constantly confusing the teachers—willing worker—Teachers College bound?

JOAN MARIE BACON

3 Russell Road

North Chelmsford

National Honor Society 4
Junior Red Cross 2, 3, 4
A. A. Member 2, 3, 4
Glee Club 1

Office Girl 3
Driver Education and Training 4
Graduation Usher 3
United Drive 3

“Joanie”—a real lady—soft spoken, sincere, gentle—Proctor’s #1 girl—Oh! those curls—sports her enviable hand-made sweaters—a buddy of Betty—will make for herself a place among the secretaries of tomorrow.



ELIZABETH ANN BELL

26 Wright Street

North Chelmsford

A. A. Member 1, 2, 3, 4
United Drive 3
Booster Drive 4
Junior Red Cross 1, 2, 3, 4
Homeroom representative 4

Press Club 4
Lamplighters 3
Driver Education and Training 4
Scrapbook Committee 3

“Betty”—real blonde hair and a ready smile—a poetess at heart—an active and interested member of the Junior Red Cross—her perseverance wins—digs Elvis the most—waits for June and then?



JANET BELL

71 North Road

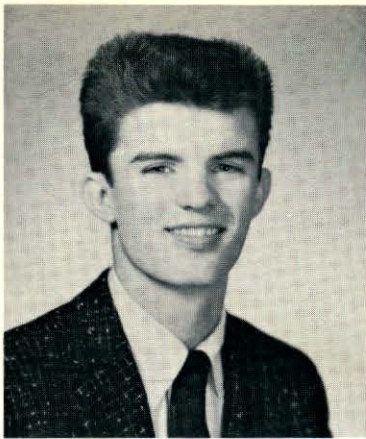
Chelmsford Center

Prom Committee 4
A. A. Member 1, 2, 3, 4, Representative 1, 2, 4
Class Dance Committee 2, 4
Field Hockey 2, 3, Co-capt. 4
United Drive 3, 4
Junior Red Cross 1, 2, Vice-President 2, President 4

Softball 3, 4
Glee Club 1
Lamplighters - Vice-President 3, 4
Driver Education and Training 4
Gymnastic Club 2

“Jan”—smiling brown eyes, smooth brown hair, and a friendly smile—truly a gracious girl—Doctor Currie’s right arm—“Seen Jude?”—field hockey queen—horse rider and enthusiast—college will mold her future.





ROBERT ARTHUR BENNETT

152 Dalton Road

Westlands

A. A. Member 1, 2, 3, 4
Junior Red Cross 1, 2, 3, 4
Class Dance Committee 4

Intramural Basketball 2, 3
Booster Driver 2, 3
Lamplighters 2

“Bob”—one of the troops—can usually be found remodeling his car—practical joker—“Mr. Bennett, get in your own seat.”—willing chauffeur—unassuming manner—will make his mark in business.

JANET ANN BENTLEY

7 Academy Street

Chelmsford Center

Orleans High School

Junior National Honor Society, 1, 2
Prize Speaking Competition 1st Prize

Class Play Lead

Chelmsford High School

Graduation Reception Usher 3
Junior Red Cross 3, 4
A. A. Member 3

Dramatic Club 4
Driver Education and Training 4

Has an interesting English accent, the real thing—blouses and ties—oh, those jokes!—Red Sox booster—“What’s the trig homework?”—quiet, but has twinkle in her eye—loves (?) P. A. D.—headed for Colby in September.



DONALD R. BERGHOLM

17 Edgelawn Avenue

North Chelmsford

Morey Junior High

Glee Club 1

Class President 1

Junior Red Cross 1

“Don”—quiet, unobtrusive, but determined—faithful to a little lady in Lowell—gets “framed” in history class—ardent admirer of Macbeth—owns a glittering Pontiac—always ready to listen to Allan and David and then to add his two-cents worth—“Good luck in the future, Don.”



BEVERLY PHYLLIS BISSONNETTE

33 Montview Road

Chelmsford Center

Class Dance Committee 3, 4 Driver Education and Training 4
Junior Red Cross 2, 3, 4, Representative 3 Booster Drive 3
Lamplighters 2, 3 Glee Club 1
A. A. Member 1, 2, 3, 4

“Bev”—fashionable—takes modeling seriously—loves a secret—monopolizes the family phone—ardent KA fan—often heard trying to sell an Imperial—vacations at Ogunquit—“I’ve got to get down to 115!”—We wish you luck, “Imp,” at Westbrook.





ELIZABETH BARBARA BOUMIL

3 Sherman Street	North Chelmsford
National Honor Society 3, 4	Graduation Usher 3
Junior Red Cross 1, 2, 3, 4, Representative 2, 4	Math Club 2
A. A. Member 1, 2, 3, 4	J. V. Basketball 2, 3, Intramural 2
Glee Club and Concert 1	Driver Education and Training 3
Press Club 4	United Drive 2, 3
Lamplighters 3	Softball 3

“Betty”—always laughing—full of fun—“Andy’s pal”—“Has anybody seen Mr. Green?”—church hoopster—friend of the knee sock manufacturer—laughs at jokes, but doesn’t always get them—college bound in the future.

MARY JANE BROOKS

20 Moore Street	East Chelmsford
Junior Red Cross 1, 2, 4	Driver Education and Training 4
Poster Committee, Chairman 4	Junior Booster Volunteer
Science Club 4	Class Dance Committee 4
United Drive 1, 2, 3	

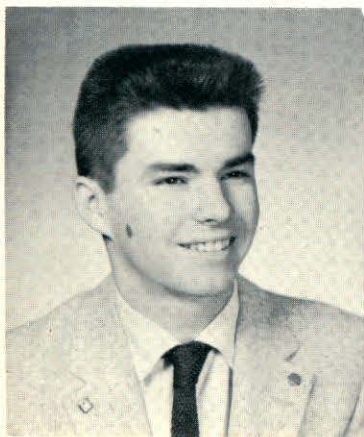
A dainty little miss—shy, kindly, ladylike—responsive to new ideas—loyal to her homework—a close companionship with her sister—loves to draw—plans to become a teacher—Good luck, Mary!



HARRY JEFFERSON BROWN

231 Groton Road	North Chelmsford
Band and Concert 2, 3, 4	Talent Show 2
Junior Red Cross 1, 2, 3, 4	United Drive 3, 4, Captain 3
Driver Education 3	Gymnastic Club 1, 2
Lamplighters 3, 4	J. V. Basketball 1, Intramural 3, 4
A. A. Member, Representative 1	Tercentennial Pageant 3
Booster Drive 3	

“Har”—helps maintain the Triangle’s service—likes all girls, but accompanies Paul during his morning conferences—Mr. Duni-gan’s right hand man—“Hey, Mac, check that!”—forever tinkering with his Olds—success will be his as he strides into the future.



JANICE ARLENE BROWN

21 Proctor Road	South Chelmsford
Yearbook Staff 4	Press Club 3, 4
Junior Red Cross 3, Representative 3	Office Girl 4
A. A. Member 3, 4	Driver Education and Training 3
United Drive 3, 4	Blood Mobile, Typist 3, 4
Booster Drive 3	Graduation and Reception Usher 3
Dance Committee 3	

“Jan”—long dark tresses—a city girl who has adjusted to country life—a busy business student—a serious press club reporter—has her lighter moments of chatter, friendship and sociability—a business woman? Definitely!





LINDA IRENE BROWN

31 Grove Street

Chelmsford Center

National Honor Society 3, 4	Driver Education and Training 4
Yearbook Staff 4	Junior Dance Committee 3
Press Club 3, 4	Graduation and Reception Usher 3
Glee Club 2, 3, 4	Decorations for Talent Show 3
Junior Red Cross, Representative 2, 3, 4	United Drive 2

Intelligent questions, right answers, independent thinking—in fact, ability with a capital A—loves history—a Dodger fan—daily debates with Janet over trig—furnishes Betty with Elvis's pictures—Lowell T. C. will help her to be the Teacher of Tomorrow.

JOAN ELIZABETH BUJNOWSKI

107 Mill Road

Chelmsford Center

Driver Education and Training 3	Dramatic Club 4
Yearbook Staff 4	Graduation and Reception Usher 3
Junior Red Cross 1, 2, 3, 4	Gymnastic Club 1
Press Club 3, 4	United Drive 4
Class Dance Committee 2, 3, 4	Talent Show 3

Chelmsford's Rembrandt—does her work quietly, efficiently, skillfully with minimum of fuss and maximum of success—loves to skate—drives a hot '47 Ford, when it's running—"See the silver in my hair?"—the brush and the palette are the symbols of her future.



MARIE LOUISE CASTELLANO

34 North Road

Chelmsford Center

Junior Red Cross 1, 2, 3, 4	A. A. Member 1, 2
Lamplighters 3, 4	Driver Education 3
United Drive 2	Talent Show 4

"Rocky"—"Hey! you know what?"—excitable and good natured—chief candy girl at Keith's—skirts, sweaters, blouses that blend or match—becoming hairdo, neat and chic—will be "tops" as a hairdresser.



LORRAINE DORIS CHAREST

246 Chelmsford Street

Westlands

Dance Committee 4	Music Festival 2, 3, 4
A. A. Member 1, 2	Intramural Basketball 2
Booster Club 1, 2, 3	Talent Show 4
Band Concert 2	Twirlers & Cheerleaders Dance Committee 1, 2, 3
Twirlers 1, 2, 3, Captain 4	

Petite beauty of the Senior Class—"Did you see my ring?"—awaits September impatiently—what a laugh!—top strutting major-ette—wedding bells are in the near future.





CORA MARIE CLARK

77 Turnpike Road Chelmsford Center
Stuttgart American Dependent School, Germany
 Pep Club 1 A. A. Member 1
Chelmsford High School
 Junior Red Cross 3, 4 Driver Training 3

Collection of pins and charm bracelets—lost temporarily to Germany—soft voice, usually in use—beware, woman driver—demon at table tennis—a successful future teaching America's youth.

THOMAS JOSEPH CONNORS

122 Robin Hill Road South Chelmsford
 A. A. Member 1, 2, 3, 4 Dance Committee 3
 Booster Drive 1, 2, 3 Football 2
 Intramural Basketball 1, 2, 3 Driver Education 3
 Dance Committee 4 Junior Red Cross 1, 2, 3, 4
 Gymnastic Club 1, 2

"Tom"—takes a lot of kidding in some classes—"What homework?"—chauffeurs the lads in his hot "Merc"—any supplies needed this week?—T for Tom and for trouble, sometimes—bound for Florida.



DAVID BURNS CORFIELD

198 Boston Road Chelmsford Center
 A. A. Member 1, 2, 3, 4 Driver Education and Training 3
 Science Club 4 Junior Red Cross 1, 2, 3, 4

"Dave"—amiable, genial, willing to listen, qualities of a good friend—reticent, but always has the answer—painstaking, patient, persevering, qualities of a scientist—his ability in physics and his know-how in trig point toward an engineering career.



ANITA MAE CROUSE

264 Groton Road North Chelmsford
Caribou High School
 Twirlers 1 Glee Club 1
North Hollywood High School
 Driver Education 2 Junior Red Cross 1, 2
Chelmsford High School
 A. A. Member 3, 4 Office Girl 4
 Junior Red Cross 3, 4 Twirlers 3, 4

"Nita"—bubbling over with energy—"Do I look all right today?"—capable baton twirler with an enviable California strut—"Oh, my English mark!"—success will reward her sincere and willing effort.





MAUREEN ANN CURRAN

997 Princeton Boulevard North Chelmsford
 Junior Red Cross 1, 2, 3, 4

Ability, personality, and lots of fun, that's "Mo"—always a friendly word for everyone—"Oh, Miss Maynard, do I have to?" Jo's favorite conspirator—one of the Commodore Queens—ready to smile her way to success.

ALLAN DAWSON DAVIDSON, Jr.

74 Dunstable Road North Chelmsford
 Band 1, 2 Driver Education and Training 3
 Band Concert 1 Junior Red Cross 1, 2, 3, 4
 A. A. 1, 2, 3, 4 United Drive 2
 Glee Club 1 Intramural Basketball 4
 Baseball, Manager 2 Booster Drive 2, 3

Avid reader of catalogues, magazines, newspapers—dismissed from class frequently for Lamplighter duty—daily conference with Corfield and Bergholm—even disposition, relaxed, enterprising—which school offers you success? Lowell Tech, or is there another?



RICHARD EUGENE DeFREITAS

12 Evergreen Street Westlands
 Good Government Day Representative 4 United Drive 2, 3, 4
 Class Dance Committee 2, 3, 4 "Starving Seven Band" 3
 A. A. Member 1, 3, 4, Representative 2 Dance Band 3, 4
 Student Council Representative 2, 4 All State Band 2, 3
 Band 1, 2, 3, 4, Concert 1, 2, 3, 4 Booster Drive 3, 4
 Glee Club 1, 2, 3 Talent Show 1, 2, 3, 4, 1st Prize 1, 2

"Richie"—"Mr. Music"—talent show winner, outstanding clarinetist, and first horn in the band—lots to offer in math and physics as well —always ready to discuss his "Olds"—ever willing to talk things over with a sophomore—college bound, Northeastern?



JOYCE MARY DIRUBBO

131 Groton Road North Chelmsford
 Glee Club 1, 2 Class Dance Committee 3
 A. A. Member 1, 2, 3 Talent Show 2, 3
 United Drive 2 Junior Red Cross 4

Dainty, dimpled, but not demure—co-pilot of Pat's beach-wagon—Prince's spaghetti bender—dates are only for Fred—enjoys being in the Talent Show—will make brighter anything she does in the days to come.





RICHARD LEON GAUTHIER

185 Groton Road

North Chelmsford

Curtis High School

Swimming Team 3
Pool Marshal 3

Classroom Treasurer 3
Golf Squad 3

Chelmsford High School

Class Dance Committee 4
Driver Education and Training 4
A. A. Member 4

Intramural Basketball 4
Junior Red Cross 4

"Dick"—New York's loss, Chelmsford's gain—makes friends readily—walks the halls casually—creates a flutter among the girls—fits easily into our ways—will be doing the same at Lowell Tech.

JOHN GONSALVES

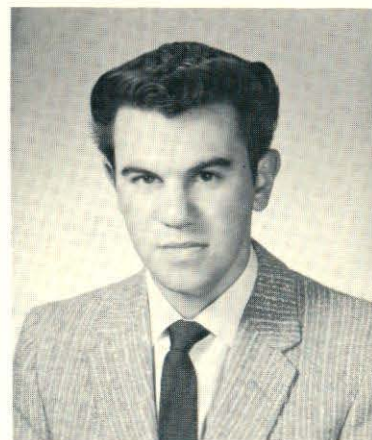
20 Biltmore Avenue

East Chelmsford

Class Dance Committee 4
A. A. Member 1, 2, 3, 4
Booster Drive 1, 3, 4
Intramural Basketball 2, 3, 4

Football 1
J. V. Basketball 1
Driver Education and Training 3
Junior Red Cross 1, 2, 3, 4

"Johnny"—interests are automobiles — drives a warm "54 Chev"—attendant at Tony's Tydol—staunch defender of East—relishes telling a joke—leaves school for work—good luck in the future.



LILLIAN GRACE GRAY

Dunstable Road

North Chelmsford

A. A. Member 1, 3, 4; Representative 2
Press Club 3, 4
Math Club 2
Junior Red Cross 1, 2, 3, 4
Scrap Book Committee 3

United Drive 2
Home Room Representative 3, 4
Driver Education and Training 3
Booster Drive 3, 4
Cap and Gown Committee

"Lil"—always neat and pretty—"Would you explain that, Mr. Hicks?"—Betty's pal—news hound for Press Club—Oh, Johnny! Oh, Johnny!—willing worker in Junior Red Cross—just plain nice and deserves a future to match.

ELEANOR LOUISE HADLEY

7 Clinton Avenue

Westlands

Glee Club 1
A. A. Member 2, 3, 4
Driver Education and Training 3
Office Girl 4

Graduation Usher 3
Softball 3
Junior Red Cross 1, 2, 3, 4

"Ellie"—tranquil, reserved, demure—has the correct answer when asked for it—a keen spectator of sports—hair has a natural curl, lucky girl—Doctor, we give you a future nurse.





JAMES DENNIS HARRINGTON

145 Boston Road

Chelmsford Center

Intramural Basketball 2, 3, 4
Gymnastic Club 1, 2
A. A. Member 1, 2, 3, 4

Talent Show 2
Driver Education and Training 3
Junior Red Cross 1, 2, 3, 4

"Den"—Dennis, the Menace—a ready Celtic smile—wheels a mean "Merc"—energetic worker—regular visitor to Art's Esso emporium—the mighty hunter—the enthusiastic fisherman—his genial ways assure him good fortune.

EDWARD DOMENIC HART, Jr.

32 Sunset Avenue

Westlands

Band 2, 3
J. V. Basketball 1, 3
Basketball 4
Intramural Basketball 1
Dramatic Club 4

Glee Club 3
Class Dance Committee 2
A. A. Member 1, 2, 3, 4
Booster Drive 1, 2, 3, 4

"Eddie"—definitely sports minded—skiing and basketball in the winter—golf the rest of the year—quiet? when he's asleep—"What's wrong with Bermudas?"—our own Arthur Murray—college and then merchandising.



MARILYN HARTLEY

68 Linwood Street

Westlands

A. A. Member 1, 2, 3, 4
Junior Red Cross 1, 2, 3, 4
Intramural Basketball 1, 2, 3
Driver Education and Training 2

Booster Drive 1, 2, 3
United Drive 3
Office Girl 3, 4

Unassuming—fair-haired—not so tall—able to turn out accurate work efficiently—interested in church work—always has time to help others—a bit retiring, but ready to chat and laugh when the opportunity arises—a successful future should be her reward.



HELEN LOUISE HAYES

130 Dalton Road

Westlands

Glee Club 1
Junior Red Cross 4
Dramatics Club 4
Booster Drive 4

Class Dance Committee 4
Intramural Basketball 1
United Drive 2, 3

A member of the pony-tail set—adores the smell of hospitals—"Doug better let me have his car!"—Carolyn's chum—nursing for this gal in the fall.





MARILYN FERN HICKS

34 North Road Chelmsford Center
 Yearbook Staff Class Dance Committee 1, 2, 3, 4
 Junior Red Cross 1, 2, 3, Secretary 4 United Drive 4
 Dramatic Club, Secretary 4 Talent Show 1
 Booster Drive 4 Driver Education and Training 3
 A. A. Member 1, 2, 3, 4 Class Ring Committee 3
 Graduation and Reception Usher 3 J. V. Basketball 3

"Hicksie"—an interesting combination of mischief and innocence—an experienced saleslady for a town shop—puts a jinx on the family car—has the ability to make more than the grade in whatever she does—will be a boon to better business.

CAROLYN FRANCES HOWELL

74 Linwood Avenue Westlands
 Cheerleaders 1, 4 Driver Education and Training
 Class Dance Committee 4 Junior Red Cross 1, 2, 3, 4
 A. A. Member 1, 2, 4 Bloodmobile, Typist, 4
 Booster Drive 4 Talent Show 1, 2

What's this little girl made of?—neatly groomed hair—roguish eyes—a desire to champion teenagers under fire—a leaning toward trouble in class—a willingness to serve the guidance department—an agile cheerleader—a business girl next year.



PATRICIA ANN HULICK

22 Swain Road North Chelmsford
 A. A. Member 1, 2, 3 United Drive 2
 Junior Red Cross 4 Talent Show 2, 3
 Glee Club 1, 2

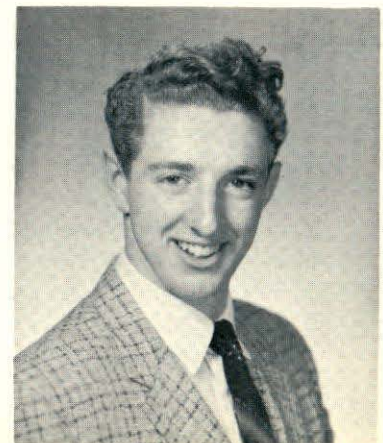
"Pat"—seldom without Joyce—"Oh, Mr. Byrne!"—golden tresses, some days up, some days down—leaves each day in a cool Chevy beach wagon—faithful to Jimmy—one of the engaged set—a home, a job, which?



ROBERT BAILEY INGALLS

140 High Street Chelmsford Center
 National Honor Society 4 Band 2, 3
 Harvard Club Book Prize 3 J. V. Football 1, Varsity 3, 4
 Yearbook Staff Student Council, Treasurer 1, President 4
 Class Motto Committee J. V. Basketball Captain 3, Varsity 4
 A. A. Member 1, 2, 3, 4 United Drive 3, 4
 Class Ring Committee 3 Talent Show 2, 3
 Class Dance Committee 4

"Bob"—willing worker—practical joker who gets away with it—seems to be drawn to Grove Street—cool, calm, and collected driver—Student Council prexy—flashy end in football—definitely college material.





JOANNE BERNICE JASON

50 Canal Street

East Chelmsford

J. V. Basketball 1, 2, 3
Press Club 3, 4
Glee Club 1, 2

Driver Education 4
A. A. Member 1, 2, 3, 4
Junior Red Cross 1, 2, 3, 4

“Jo”—beautiful coal-black hair—a poised manner—takes her task seriously and pleasantly whether school work, press club, or tallying an order at the Purity—Basketball—she loves to play—a CYOer—capable and able to shoulder the responsibilities of any business man.

RAYMOND BROWN JOHNSON, Jr.

26 Chelmsford Street

Chelmsford Center

National Honor Society 4 Driver Education and Training 3
Class Motto Committee, Co-chairman 4 Graduation Usher 3
A. A. Member 1, 2, 3, 4 Class Dance Committee 3, 4
Class Ring Committee, Co-chairman 3 Football, Manager 2

“Ray”—casual Casanova—peg pants, bright shirts, a swirl of smooth black hair—a camouflage for ability—a mature reader—“But Miss Scoboria, that’s impossible!”—daily lunchroom duty—awaits that promotion from produce—success is his after college.



ALBERTA ELAINE JONES

45 Chelmsford Street

Chelmsford Center

A. A. Member 1, 2, 3, 4 Band Concert 1, 3, 4
J. V. Basketball 1, 2, Varsity 3, 4 Graduation Usherette 3
Field Hockey 1, 2, 3, 4, Co-captain 4 Press Club 4
Junior Red Cross 1, 2, 3, 4 Chairman of Class Outing Committee 4
Student Council Rep. 1, 2, 3 Driver Education and Training 3
Glee Club 1, 3, 4 United Drive 1, 2

“Bert”—personality plus—sharpshooter for the team—slow and easy—homework first?—gets a laugh out of everything—babysitter par excellence—a welcome addition to any group—leaves Chelmsford High to liven up U. N. H.



GERALDINE ANN KEDDIE

11 Clancy Street

East Chelmsford

Yearbook Staff Class Day Chairman
Cheerleaders 2, 3, Captain 4 Intramural Basketball 1, 2
Cheerleaders Dance Committee 2, 4 United Drive 2, 3, 4
Class Dance Committee 4 Office Girl 3, 4
Glee Club 1, 2 Driver Education and Training 4
A. A. Member 1, 2, 3, 4 Junior Red Cross 1, 2, 3

“Gerry”—an atom bomb—peppy captain of our cheerleaders—a lively person who couldn’t be kept down—gladly gives a lift to anyone—Del’s pride and joy—the champion of the underdog—will keep some office humming.





JESSE KENNETH KEMP

8 Russell Mill Road

Chelmsford Center

A. A. Member 1, 3, 4
Driver Education 2
Driver Training 3

Junior Red Cross 1, 2, 3, 4
Intramural Basketball 1, 2, 3, 4
Tercentennial Pageant 2

“Pete”—tall, dark, and just a wee bit shy of the girls—serious, quiet, but always able to enjoy fun and contribute to it—smiles in an understanding way—his serious approach to work will produce success in his future life.

RONALD WAYNE KILBURN

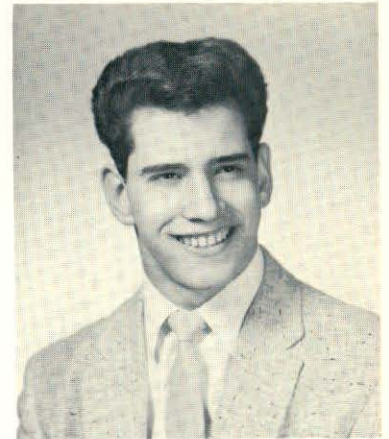
70 Hall Road

Chelmsford Center

Football 1, 2, 3, 4
Glee Club 1, 2
A. A. Member 1, 2, 3, 4

Talent Show 2, 3
Driver Education and Training 3

“Jango”—one of the lads—hot rod fan—has dangerous moods—waits patiently for Sandy, listens quietly to her chatter—tall, dark, debonaire—sincere—loves the out-of-doors—“cool” coiffure—Jungle’s stalwart—Best of Luck!



JOHN BRENT KIMBALL

219 Graniteville Road

West Chelmsford

Booster Club Drive 1, 2, 4
J. V. Basketball 1, 2, Intramural 1, 2, 3, 4
Football 1
Golf Team 2, 3
A. A. Member 2, 3, 4, Representative 1
Junior Red Cross 1, 2, 3, 4

Tercentennial Pageant 2
Glee Club 1, 2, 3
Class Dance Committee 1, Co-chairman 3, 4
Talent Show 3, 4
United Drive 2, 3
Driver Education and Training 4

Brightens up our local pharmacy—genial, hail-fellow well met—candid photographer—proud of his license—C. H. S.’s big game hunter—one of the five boys in fourth period English, and enjoys every minute of it—will make his mark in the world.

JUDITH ANN KROLL

43 Proctor Road

South Chelmsford

Prom Committee, Chairman
Class Dance Committee, Chairman 2, 3, 4
Field Hockey 3, 4
Softball 3, 4
Graduation and Reception Usher 3
Junior Red Cross 1, 2, Representative 3, Vice President 4
United Drive 4

Lamplighters 4
Press Club
A. A. Member 1, 2, 3, Representative 4
Driver Education 4
Booster Club 2, 3, 4

“Judy”—a perky pony-tail—a pink and white school girl complexion—one of the energetic equestrians of South—Jan’s twin—has a definite interest in Billerica—a great help (?) to Adams Library—college queen in the future.



KATHLEEN ELAINE KULSKI

66 Carlisle Street

East Chelmsford

Class Dance Committee 4	Driver Education and Training 4
A. A. Member 1, 2, 3, 4	Booster Drive 1, 2, 3, 4
Intramural Basketball 1, 2	Glee Club 1, 2
Junior Red Cross 1, 2, 3, Representative 4	Dramatic Club 4

"Kathy"—a pal worth having—smart clothes—proud of her friendship ring and hope chest—CYO—animated talker—gives an opinion. Wait! idea changed—hopes to work in office.



MARILYN LOUISE KYDD

49 Chelmsford Street

Chelmsford Center

Glee Club 1, 2, 3, 4	Prom Tickets and Publicity Committee
Cheerleader 4	Blood Mobile, Typist 4
Intramural Basketball 1	Talent Show 1, 2
Cheerleaders Dance Committee 4	Office Girl 4
United Fund, Usherette 4	Driver Education and Training 4
A. A. Member 1, 2, 3	

A bundle of energy—cheerleader with sparkle and verve—loves to Cha, Cha—adores to chit-chat—active appetite—"helps out" at Bon Marche—an alert private secretary-to-be.



RICHARD WILLIAM LEWIS

172 Robin Hill Road

South Chelmsford

Booster Club Drive 1, 2, 4	Driver Education and Training 3
United Drive 1, 2, 3, 4	Junior Red Cross 1, 2, 3, 4

Tall, blonde, and blushing, that's "Dick"—arrives on what were rubber treads—"Anyone going South?"—nothing shy about this fella—sure to reach success as swiftly as a souped-up hot-rod.



JESSAMINE MAE MackENZIE

6 Frank Street

North Chelmsford

Talent Show 1	A. A. Member 1, 2, 3, 4
Glee Club 1	Booster Drive 3, 4
Driver Education and Training 3	

"Jessie"—petite and peppy—happy-go-lucky—"What's your act?"—chauffeured by Carol in a cool Pontiac—rollerskating, anyone?—sensitive, shy, and serious—future undecided.





PAUL JOHN McINTIRE

212 Groton Road

North Chelmsford

Yearbook Staff
Class Officer 2

Class Dance Committee, Chairman 4
Talent Show 1, 4, Prize 1

J. V. Football 1, Varsity 3, 4

Booster Drive 3

J. V. Baseball 1

United Drive 3, 4

A. A. Member 1, 2, Representative 3, 4

Lamplighters 4

Intramural Basketball 2, 3, 4

Driver Education and Training 3

“Mac”—big, brawny, powerful—hard hitting tackle—takes pride in his girl from East and his Ford—other interests of this popular boy are food and sleep—self-employed at Wedge Oil Co.—aiming for Dartmouth.

LIANNE FAY McMILLAN

172 Groton Road

North Chelmsford

Gloucester High

Glee Club 1

Dramatic Club 1

Chelmsford High School

Glee Club 2, 3, 4

Talent Show 2, 3, 4

Lamplighters 3, 4

“Lee”—keeps things rolling in P. A. D.—enviable long hair—three stones in her ring—Ray’s her man—“Now at Gloucester”—famous for her laugh—annually makes like a bird in the Talent Show—best of everything for “Lee”.



DOROTHY ANNE MORETON

16 Woodbine Street

Westlands

A. A. Member 1, 2, 3, 4

Driver Training 3

Gymnastic Club 1

Junior Red Cross 1, 2, 3, 4

Driver Education 2

Softball 3

“Dotty”—quiet until acquainted, then still quiet—a devoted big sister—always willing to accommodate anyone—makes no fuss about fulfilling a task or doing a favor—it’s a Ford, she drives—enjoys her work—success in whatever you do, “Dotty!”



PAULINE MARIE MURPHY

34 Gorham Street

East Chelmsford

Notre Dame Academy

Pageant 1

Chelmsford High School

A. A. Member 2, 3

Class Dance Committee 2

Office Girl 4

“Murph”—her manner, reserved and poised—her voice, controlled and ladylike—and then!—a mass of dark, dark red hair—earns her extra money at Bell’s—babbles on about Franny.





RALPH BYAM NICKERSON

5 Sunset Avenue

Westlands

A. A. Member 1, 2, 3, 4
 Junior Red Cross 1, 2, 3, 4
 Booster Club Drive 2, 3

Intramural Basketball 2, 3, 4
 Class Dance Committee 4

“Ralph”—owner of a 48 Ford, usually without a transmission—wherever the troops are gathered Ralph is right there—reluctant student—prefers hot rod books to text books—needs no excuse to collaborate—undecided about the future.

FRANCINE MARY O’SULLIVAN

26 Grove Street

Chelmsford Center

A. A. Member 1, 2, 3, 4
 Junior Red Cross 1, 2, 3, Representative 4
 Driver Education and Training 3
 Dramatic Club Treasurer 4
 United Fund Drive Usher 4
 Dance Committee 1, 2, 3
 Booster Drive 1, 2
 Glee Club 1
 Field Hockey 4
 Prom Committee, Publicity & Tickets, Co-chairman

“Fran”—“Sheena!”—ROTC queen—stately, sedate—willing listener—has a mania for long walks—had her share of ups and downs in field hockey—instigator—faithful correspondent—Simmons bound—a lady in white?



ALICE MARY PERKO

163 Chelmsford Street

Chelmsford Center

National Honor Society 3, 4
 Class Dance Committee 4
 Graduation and Reception Usher 3
 A. A. Member 1, 2, 3, 4

Dramatic Club 4
 Intramural Basketball 2
 Gymnastic Club 2
 Glee Club 1

“Al”—sometimes forgets in history that she is a dignified senior—helps to create goodwill for Dillon’s, the cleaner—neatness personified—never a hair out of place nor an eyebrow ruffled—Joan’s sidekick—a “Y” basketballer—will make an efficient, capable business woman.

HELEN ROSE POPPLEWELL

168 Dalton Road

Westlands

A. A. Member 1, 2, 3, 4
 Intramural Basketball 1, 2
 Talent Show 2
 Glee Club 4
 Driver Training 4
 Driver Education 3
 United Drive 2, 3
 Booster Drive 1, 2, 3
 Junior Red Cross 1, 2, 3, Representative 4
 Graduation and Reception Usher 3
 Dramatic Club 4

“Widgie”—takes your money at Godins’—always trig, trim, and well tailored—shoulder-length natural curly hair—a fabulous basketball forward, at the “Y”—willing to ride with Marilyn—blushes easily—success will be yours—Will it be business or nursing, Helen?





ROBERT DAVID PRESCOTT

121 Riverneck Road

East Chelmsford

Class Dance Committee 4

Football 1, 2, 3, Co-captain 4

A. A. Member 2, 3, 4, Representative 1

Booster Drive 1, 2, 3, 4

Intramural Basketball 1, 2, 3, 4

Glee Club 1

“Bobbie”—co-captain and flashy quarterback—“The Last of The Prescott Boys from East”—Mary Lou, his one and only—in trouble? Not Bobbie! oh, no!—Purity’s stock stamper—Uncle Sam’s gun totter.

ARTHUR LEO PROVENCAL, Jr.

23 Dunstable Road

North Chelmsford

Prom Committee

Talent Show 1, 2, 4

A. A. Member 1, 2, 3, 4, Representative 2

Band 1, 2, 3

J. V. Basketball 1, 2

Junior Red Cross 1, 2, 3, 4

Varsity Basketball 3, Captain 4

United Drive 2, 3

Intramural Basketball 1

Driver Education 3

“Archie,” Pro—star basketball captain—always ready to talk himself in or out of a situation—easy and assured manner—gallant table swabber in the lunch room—staunch Ford enthusiast—a whiz with the T-square—one of our future engineers?



SHIRLEY PAULINE QUINTIN

Dunstable Road

North Chelmsford

Talent Show 1, 2

Gymnastic Club 1

Glee Club 3, 4

Junior Red Cross 1, 2, 3, 4

Driver Education and Training 4

A quiet girl in a class of chatterboxes—Shirley is truly a reticent maid—connoisseur of music—staunch supporter of the talent show—remember her yodeling?—interested in a nursing career—calmly awaits the future—good luck, Shirley.



SANDRA ARLENE RICCIARDI

47 Groton Road

North Chelmsford

Yearbook Staff 4

Glee Club 1

Cheerleader 1, 4

Driver Education and Training 3, 4

Student Council 4

Junior Red Cross 1, 2, 3, 4

J. V. Basketball 3

A. A. Member 1, 2, 3, 4

Class Ring Committee 3

Intramural Basketball 3

Class Dance Committee 2, 3

Talent Show 3, 4

“Sandy”—full of vim, vigor, and vitality—“What a panic!”—fastidious dresser—a sweetheart, huh, Wayne?—A-1 bookkeeper—knows all the jokes—“When I get my license. . .”—has what it takes to be successful.





MARCIA JEAN RICKER

7 School Street

West Chelmsford

National Honor Society 3, 4
A. A. Member 1, 2, 3, 4
Junior Red Cross 1, 2, 3, 4
Driver Education and Training 3
Graduation and Reception Usher 3
Open House Usher 4

Talent Show 2
Dramatic Club 4
Office Girl 4
Booster Drive 1, 2
United Drive 2, 3

Cool, calm, and collected—affectionately known as “Sticky”—a definite knack for analyzing handwriting—a flair for the stage—an MYU gal—one of Kimball’s summer sundae servers—her many talents will make her an excellent teacher.

GERALD ALLEN ROBINSON

206 Dalton Road

Westlands

A. A. Member 1, 2, 3, 4, Representative 3
Junior Red Cross 1, 2, 3, 4
Baseball 3, Co-Captain 4
Booster Drive 3, 4
Driver Education 4
J. V. Basketball 1, 2, 3
United Drive 3
Intramural Basketball 1

“Jerry”—another physics lover—pals with Ralph—prefers magazines to books—can cut a sharp rug—has morning tete a tete with a little blonde—a Holy Trinity fan—answers with a grin—has high hopes for the future.



KRISTIN JOANNA ALEXANDRIA ROYMANS

140 North Road

Chelmsford Center

National Honor Society 3, Secretary 4
Student Council, Recording secretary 2, Vice-President 3, Assembly Chairman 3
Junior Red Cross 1, 2, 3, Representative 1, Secretary 3
Office Girl 4
Field Hockey 2, 3, 4
A. A. Member 1, 2, 3, 4
Basketball Manager 4
United Drive 2, 4
Glee Club 1, 2, 3
Press Club 4
Graduation Usher 3
Dramatic Club 4

“Kris”—amiable and ambitious—flashing dimples — “You mean you bought oranges, too?”—busy office girl, period 6—flustered and forgetful, but so-o-o sincere—“I don’t get it”—physics fanatic—wonderful worker for worthy causes—“Kris” goes on to success at the school of her choice.



ALBERT GEORGE SCAPLEN

44 Washington Street

North Chelmsford

A. A. Member 1, 2, 3, 4
Junior Red Cross 1, 2, 3, 4
Football 2, 3, Co-captain 4
J. V. Basketball 1, 2, Varsity 3, 4
Baseball 1, 2
Intramural Basketball 1
Band 1, 2
Gymnastic Club 1, 2
United Drive 2, 3

“Bert”—three letter man—co-captain and flashy halfback—has eyes for a little blonde sophomore—honor roll student—curly top—“anyone for a game of hearts?”—ready talker—college days ahead.





ANN MARIE SEHLSTEDT

12 Sharon Avenue

North Chelmsford

National Honor Society 3, Treasurer 4
 J. V. Basketball 3, Varsity 4
 A. A. Member 1, 2, 3, 4
 Field Hockey 3, 4
 Driver Education and Training 3
 United Drive 2, 3
 Softball 3
 Press Club 3, 4
 Graduation and Reception Usher 3
 Junior Red Cross 1, 2, 3, 4, Representative 3
 Glee Club 1, 3, 4, Concert 3
 Open House Usher 4

“Andy”—wild about hockey—nearly as enthusiastic about playing basketball—work neatly, efficiently done and on time—never a wrinkle, never a hair out of place—who put the dent in your Dad’s car, “Andy?”—good luck to you, Ann Marie, at Lowell Teachers College.

ELIZABETH ANNE SIMPSON

203 Park Road

South Chelmsford

National Honor Society 4
 A. A. Member 1, 2, 3, 4
 Junior Red Cross 1, 2, 3, 4
 Intramural Basketball 1, 2, 3
 J. V. Basketball 3, Varsity 4
 Field Hockey 2
 Driver Education and Training 4
 United Drive 2, 3
 Booster Drive 1, 2, 3, 4
 Dramatic Club 4
 Graduation and Reception Usher 3
 Softball 3

“Buffy”—dynamic personality and winning smile—tosses a mean basketball—active and capable in field hockey—from the “tropical” section of Town—“Buffy” should prove to be an interesting teacher.



NANCY ANN SMALL

3 Hilltop Terrace

Westlands

A. A. Member 3, 4
 Twirler 3, 4
 Booster Drive 2, 3
 Class Dance Committee 4
 Music Festival 3, 4
 Junior Red Cross 2, 3, 4
 Intramural Basketball 2
 United Drive 3, 4
 Talent Show 4

Tall and slender—pleasing manner—Lorraine’s pal—a Y. W. star—really struts her stuff on the football field—gets her rest in study hall—eager to start her career as a model.

CAROLYN LOUISE SMITH

173 Groton Road

North Chelmsford

National Honor Society, Vice-President 3, 4
 Junior Red Cross 1, 2, 3, 4, Representative 3
 Class Treasurer 1, Class Vice-President 2
 Glee Club 1, 3, Band Concert 1, 3
 Varsity Basketball 3, 4
 Field Hockey 4
 Press Club 3, 4
 Office Girl 4
 Open House Usher 4
 Dramatic Club 4
 Graduation and Reception Usher 3
 Driver Education and Training 3

“Smitty”—whiz at basketball and field hockey—intelligent as she is attractive—0 period office girl—eyes only for Westford—will be a success at her chosen profession of teaching.





BERTHA JEAN SZUCH

28 First Street

Chelmsford Center

Bradford Academy

Mixed Glee Club 1, 2
Girls Glee Club 1, 2
Basketball 1

Class Dance Committee 1, 2
Librarian 2

Sometimes called "Butch" to her chagrin—long, long curls which she threatens to cut—has Northern interests—a lazy drawl—has not been with us all four years—Bertha looks to the world of business for success.

KATHRYN DIANNE THOMAS

43 Bartlett Street

Chelmsford Center

National Honor Society 3, 4
Yearbook Staff
Class Dance Committee 1, 2, 3, 4

A. A. Member 1, 4
Junior Red Cross 2
Graduation Usher

"Kay"—happy, vivacious, and a wonderful friend—loves to watch the boxing matches at F. D., with a "true love"—a loyal trail riding fan from way back—aspires to be as good with the brush as Michelangelo.



PATRICIA ANNE THOMPSON

163 Park Road

South Chelmsford

Senior Dance Committee 4
A. A. Member 1, 2, 3, 4
Math Club, Secretary 2
J. V. Basketball 2, 3, Varsity 4
Talent Show 3
Band 1, 2, 3, Concert 1, 2, 3

Intramural Basketball 1, 2
United Drive 1, 2, 3
Junior Red Cross 1, 2, 3, 4
Glee Club 1
Driver Education and Training 3
Booster Drive 1, 2, 3

"Pat"—future secretary—uniforms send her—"Gads!"—always an innocent smile—flies low in her '46 Olds—part-time Purity gal—loves to chat in history class, or anywhere for that matter—has ability which can take her far—a good job, a good husband, maybe a millionaire.



BRENDA LOCKWOOD VINECOMBE

16 Robin Hill Road

Chelmsford Center

Twirlers 3, 4
Dramatic Club 4
Glee Club 1, 2, 3, 4
J. V. and Intramural Basketball 1, 2, 3
A. A. Member 1, 2, 3, 4
Band Concert 1, 2, 3, 4

Talent Show 2, 4
Graduation Usher 3
Watertown Music Festival
Junior Red Cross 1, 2, 3, 4
Class Dance Committee 4
Driver Education and Training 4

"Steve's" gal—long hair and sparkling blue eyes — ardent French scholar—quick to smile—snappy baton twirler—loquacious in 5th period—which will it be, Brenda, Lowell Teachers or Bridgewater?





SPIRO VROUHAS

Pine Hill Road

South Chelmsford

A. A. Member 1, 2, 3, 4
Band 1, 2, 3, 4
Band Concert 1, 2, 3, 4
Driver Education and Training 3
United Drive 3

Intramural Basketball 2, 4
Glee Club 4
Booster Drive 2, 3
Junior Red Cross 1, 2, 3, 4
Class Dance Committee 4

Spiro—an ardent bandsman—daily date with Miss Scoboria—tries to out-manuever the lunchline at noon—industrious poultry farmer—makes frequent trips to the “Y”—it will be college for Spiro in the fall.

CLAIRE ELAINE WATT

79 Billerica Street

Chelmsford Center

Class Marshal 3
National Honor Society 3, 4
Yearbook Staff
Corresponding Secretary, Student Council 4
Press Club 4
Glee Club 3
Driver Education and Training 4

Field Hockey 3, 4
United Drive 4
Middlesex Women’s Club Award 3
Basketball Manager 4
Red Cross Member 1, 2, 3, 4
A. A. Member 1, 2, 4, Representative 3

An efficient and capable student—usually chatting with Berta or Kris—“Ah! Elvis! !”—plays a mean game of basketball, from the bench—enjoyed a fast game of field hockey—plans to keep up excellent work at Jackson.



ANN COLBY WHALEN

8 Proctor Road

South Chelmsford

A. A. Member 1, 3, 4
Junior Red Cross 1, 2, 3, 4
Driver Education and Training 4
Press Club 4

United Drive 2, 3
Booster Drive 1, 2, 4
Graduation Usher 3

Look for her on any prize horse—inseparable pal of Beth—and always conspiring with Janice—“Saw him at lunch time!”—most of the time looking for something to “Reid”—four more years at L. T. C.

WILLIAM HENRY WILLIAMS

33 Garrison Road

South Chelmsford

A. A. Member 1, 2, 3, 4
Junior Red Cross 1, 2, 3, 4
Band 1, 2

United Drive 3, 4
Intramural Basketball 2, 4

“Bill”—topped by real platinum blond bristles—rugged hard-working dairyman—winner of honors in 4H with his tractor—his prize, a trip to Eastern States Fair—active at All Saints affairs—blew a horn for Mr. Bordeleau—successful future farmer of America.





SANDRA RUTH WITTS

95 Stedman Street

Westlands

Yearbook Staff 4
A. A. Member, Representative 1, 4
Graduation and Reception Usher 3
Glee Club 1
Junior Red Cross 1, 2, 3, 4

Class Dance Committee 4
Gymnastic Club 1
Office Girl 3, 4
United Drive 4

“Sandy”—neat, sweet, petite—dawn patrol of the halls with Carole—flips the duplicator crank with ease—human dynamo at the typewriter—quiet? not so much—will contribute ability and stability to any office.

GEORGE SOTER ZAHAROLIS

191 Princeton Street

North Chelmsford

A. A. Member 1, 2, 3, 4
Junior Red Cross 1, 2, 3, 4
Driver Education and Training 3

Booster Club 3
Glee Club 4
Intramural Basketball 2, 4

“Zaha”—ardent follower of C. H. S. sports—wheels a hot “Olds 6”—thinks Macbeth is real gone—reserves an extra place in the lunch line daily—busy business man summers—will it be the service or college in the fall?



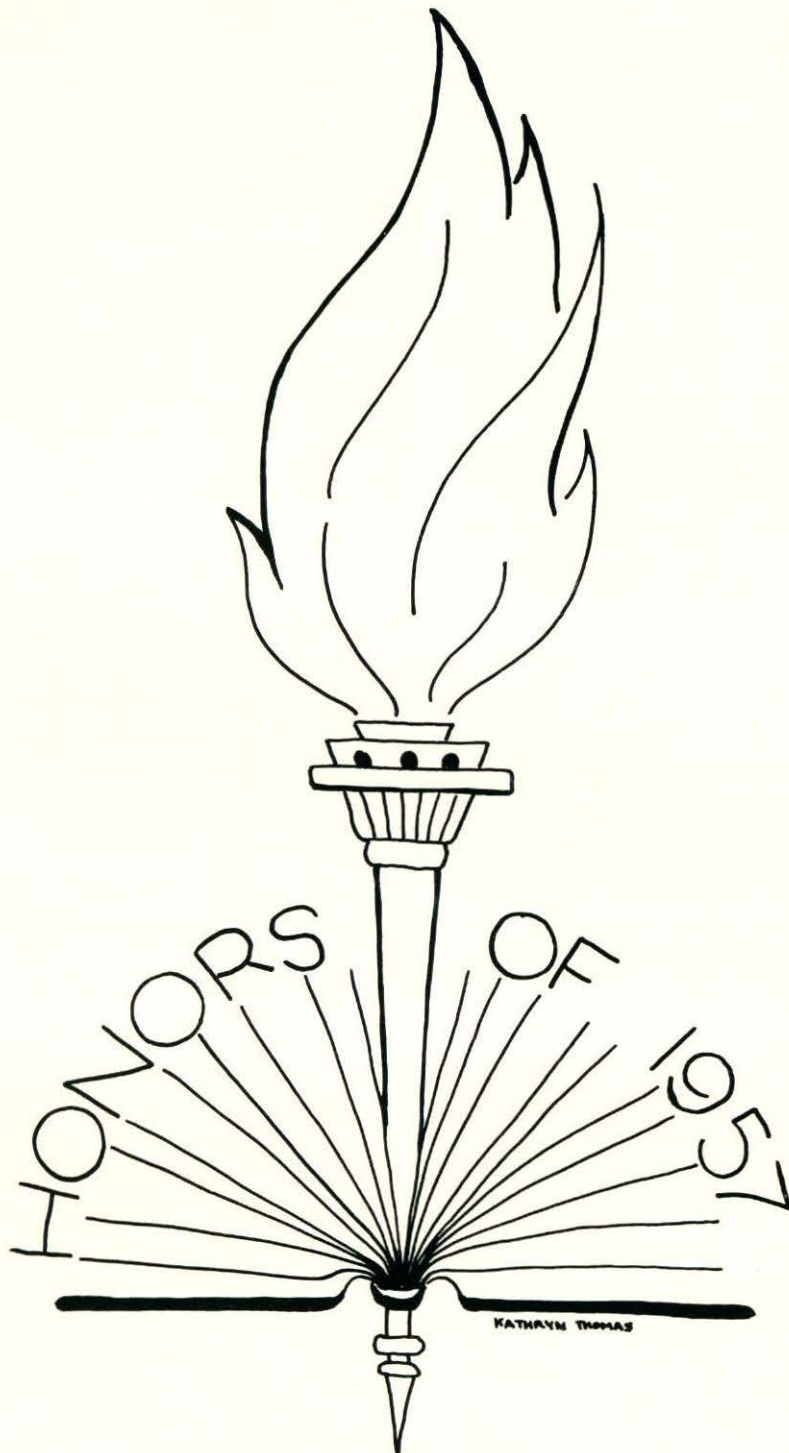
MY DREAM

Someday I would like to see
A world at peace, but also free,
Where armies, navies, and police
Are not needed to keep the peace,
Where all men have the self same rights
And racial traits do not cause fights,
Where from fear no one need run
To free himself from a Russian gun,
Where men may hark to many voices
And cast their votes from sundry choices,
Where guns are toys and not to be used
To collect from the poor, their hard-earned dues—
But if I live to be ninety-nine
My dream, I fear, I'll never find.



*Odds
and
Ends*





The Class of 1957 - Honors

GRADUATION SPEAKERS

Linda Irene Brown

Claire Elaine Watt

Lila Margaret Crowley

Carolyn Louise Smith

HIGH HONOR

Elizabeth Barbara Boumil

Marcia Jean Ricker

Kristin Joanna Alexandra Roymans

HONOR

Alice Mary Perko

Kathryn Dianne Thomas

Joan Marie Bacon

Elizabeth Anne Simpson

Ann Marie Sehlstedt

Robert Bailey Ingalls

Raymond Brown Johnson, Jr.

Janet Ann Bentley

Helen Rose Popplewell

Eleanor Louise Hadley

George Douglas House

Judith Ann Kroll

John James Fisher

Lillian Grace Gray

Special Awards

Class of 1956

The following is a list of special awards presented at the graduation exercises, June 13, 1956. Inasmuch as these awards were not made until the night of graduation, it was impossible to record them in the 1956 Yearbook.

THE HARVARD CLUB BOOK PRIZE — Presented by the Harvard Club of Boston to the best all around boy who stands high in scholarship and character in the college course of the Junior Class — "The Harvard Book" — by William Bentinck-Smith, awarded to **ROBERT INGALLS**.

GOOD CITIZENSHIP CERTIFICATE — Presented by the Daughters of the American Revolution for outstanding qualities of dependability, leadership, service and patriotism — awarded to **NANCY MEDIN** who was selected by her classmates and teachers.

READER'S DIGEST — A complimentary subscription to the Reader's Digest for one year to the Valedictorian of the Class of 1956 — **ROBERT PITMAN LAMPREY**.

BAUSCH AND LOMB HONORARY SCIENCE AWARD — Given by the Bausch and Lomb Optical Co. for outstanding accomplishment in the study of scientific subjects — awarded to **EDWARD SPAULDING PERZEL**.

DUNIGAN AWARD — Given by the Chelmsford Teachers Association in loving memory of Hilda B. Dunigan, who taught in Chelmsford High School, from 1928 to 1934, for excellence in shorthand and typewriting as determined by competitive examination, won by **CYNTHIA KAY CHANDLER**.

GAY AWARD — Given by the Chelmsford Teachers Association in loving memory of Dorothy F. Gay, who taught in Chelmsford High School, from 1932 to 1934, for excellence in French as determined by competitive examination, won by **JOSEPH LAWRENCE BOYD**.

FOGG AWARD — Given by the Chelmsford Teachers Association in loving memory of Donald H. Fogg, who taught in Chelmsford High School, from 1940 to 1943, to the highest ranking senior girl who has earned a letter in major sports, won by **ANNE MARIE CROWE**.

KNIGHTLY AWARD — Given by the Chelmsford Teachers Association in loving memory of George R. Knightly, who was a teacher and coach in Chelmsford High School, from 1930 to 1943, to the highest ranking senior boy who has earned a letter in major sports, won by **EDWARD SPAULDING PERZEL**.

LARKIN AWARD — Given by Chelmsford Teachers Association in loving memory of Bernard P. Larkin, who was the band teacher in Chelmsford from 1943 to 1952, to the senior who has contributed the most to the music department in time and effort, won by PRISCILLA FRANCES HOYT.

DEXTER AWARD — Given by the Chelmsford Teachers Association in loving memory of Lilla M. Dexter, who taught in the Chelmsford schools from 1942 to 1955, to the highest ranking senior going to a State Teachers College, won by DOROTHY VROUHAS.

HOYLE MEMORIAL AWARD — Given by the Chelmsford Booster Club in loving memory of Frank Hoyle, who was the President and organizer of the Boosters Club from 1951 to 1953, and awarded to the senior who has contributed the greatest service to the school during two or more years in high school, won by RICHARD MASON HICKS.

UNITED STATES HISTORY PRIZE — a medal presented by the American Legion Post No. 212, of Chelmsford Center, for excellency in United States History — award to EDWARD SPAULDING PERZEL.

JOURNALISTIC SCHOLARSHIP — Given by the Chelmsford Newsweekly as determined by competition in recognition of ability to write on an unannounced subject. The amount of this scholarship is \$50 with an additional \$50 if the winner is enrolled in college as a major in journalism, won by BARBARANN HOWARD.

BOOSTER CLUB SCHOLARSHIP — Given by the Chelmsford Booster Club to aid in the furtherance of the education of a senior boy and girl. These are \$100 scholarships for which pupils must apply. The selections are made from the applicants by a committee of Boosters and teachers, won by ELIZABETH ANNE EGERTON, JOHN EDWARD WITTS, and NANCY MEDIN.

THE SOUTH CHELMSFORD GUN AND ROD CLUB SPORTSMANSHIP SCHOLARSHIP AWARD — Given by the South Chelmsford Gun and Rod Club to the athlete who best exemplifies the traits of a good sportsman over a period of two or more years of athletic competition, won by OMER LEO DESMARAIS.

THE JUDITH DRYDEN MEMORIAL CITIZENSHIP AWARD — Given by the South Chelmsford Village Improvement Association and awarded to the senior who has exemplified in a most marked degree the characteristics of citizenship as evidenced by outstanding traits of social responsibility, maturity of judgement and integrity, won by CYNTHIA CHANDLER.

THE CHELMSFORD TEACHERS ASSOCIATION SCHOLARSHIPS — Given by the Chelmsford Teachers Association in memory of deceased members and awarded to seniors who have fulfilled the scholarship and citizenship requirements. This year given to DOROTHY VROUHAS, PRISCILLA FRANCES HOYT, and JOHN LEONARD MARTIN.

THE CLASS OF 1906 SCHOLARSHIP — Given by the Class of 1906 to a high ranking student who plans to go to a Teachers College, awarded to ANNE MARIE CROWE.

THE CENTER SCHOOL PARENT TEACHER ASSOCIATION SCHOLARSHIP — a \$200 scholarship to aid in the furtherance of the education of a senior boy or girl. This scholarship must be applied for and selection is made from the applicants by a committee of parents and teachers, won by EDWARD SPAULDING PERZEL.



Well!!



Pretty as a picture



Serious concentration



Really?



Oh, yeah!



As I said . . .



Need any help?



Busy Bees



Wow!



Just looking.



A backward glance.



Is everybody happy?



Muscle bound.



Just relaxing.



So sad!



Hey, look.



Mutt and Jeff.



Every inch counts.



Don't do it!



What're ya doin'?



Watch where you are going.



Too much.



Ballerina.



How's the weather?



A helping hand.



Don't you dare!



Now, let's do it right.



Jam session.



Make yourself comfortable.



It really was funny



KATHRYN THOMAS

ON RECORDS

Junior Class



President—Albert Egan

Secretary — Judith Lamb

Vice-President — Martha Crane

Treasurer — Diane Archer

Faculty Advisers — F. Christine Booth and Costas Kevghas

Adams, Dorothy
 Altemus, Carolyn
 Auger, Armand
 Bacon, Eleanor
 Baron, Bruce
 Bell, Ronald
 Belleville, Carol
 Blondin, Diana
 Bowers, Elizabeth
 Brodley, Bruce
 Brooks, Barbara
 Broscombe, Valerie
 Brow, Fred
 Brown, Donald
 Brown, Roger
 Bujnowski, Pauline
 Burke, Daniel
 Cahill, Susan
 Cahill, Thomas
 Caron, Armand
 Charest, Dorothy
 Chute, Gail
 Chute, William
 Clark, Elizabeth
 Collins, Loretta
 Connor, Charles
 Corcoran, Patricia
 Cossete, Roland
 Cullen, Judith
 Cullinan, Patrick

Daigle, Richard
 Daron, Fred
 Doak, Shirley
 Donaldson, Robert
 Doubleday, Sandra
 Drew, Donald
 Dutton, Bryant
 Englund, Cynthia
 Flynn, Ann
 Gagne, Raymond
 Gagnon, Robert
 Gleason, Frederick
 Gordon, Diane
 Gosselin, Alfred
 Grenier, George
 Harper, Ruth
 Harvey, Sandra
 Hehir, Joseph
 Henderson, Carole
 Hildreth, Fred
 Howard, Elizabeth
 Howard, Janet
 Hoyt, Deborah
 Johnson, Philip
 Kenyon, Mary
 Kenyon, William
 Killen, Cynthia
 Korsak, William
 Landoch, Kathleen

Leedberg, Janet
 Lemay, Dolores
 Linnell, Joan
 Loving, Ann
 MacDonald, Judith
 Marcotte, Raymond
 McCoy, John
 McDonough, Richard
 McEnaney, Barbara
 McGillivray, Kenneth
 McGlew, Margaret
 McGovern, Paul
 McLean, Mary
 Midgley, William
 Monette, Francis
 Moore, Robert
 Morrissey, Kenneth
 Morton, Barry
 Mosley, Nancy
 Mungovan, John
 Murphy, Elizabeth
 Navoy, Michael
 Nelson, Lorraine
 Nicodemus, James
 Nordin, Patricia
 Oliver, Patricia
 O'Neil, Sandra
 Ostman, Barry
 O'Sullivan, Marlene

O'Sullivan, William
 Parent, Elizabeth
 Patterson, Rachel
 Patton, Thomas
 Pearson, Robert
 Pimentel, Joseph
 Pomerleau, Diane
 Quinn, Kieron
 Reeves, Mary
 Reid, Russell
 Rocha, Mary
 Russell, Daniel
 Shaughnessy, Eileen
 Shedd, Judith
 Simpson, Georgia
 Small, Cynthia
 Smith, Judith
 Sousa, James
 Sullivan, Roger
 Thayer, Richard
 Thompson, Paul
 Vennard, Peter
 Walsh, Eugene
 Webster, Janice
 Wellington, Charles
 Wetmore, Ronald
 Whitesides, James
 Winterbottom, John
 Wright, Beverly
 Wright, Charles

Sophomore Class



President — Richard Morrissey
Secretary — Anne St. Germain

Vice-President — Susan Medin
Treasurer — Kathryn Crane

Faculty Advisers — Martha F. Kinneen and Stanley J. Suchodolski

Abely, Edward	Deuel, John	Lane, Frederick	Paduch, Patricia
Auger, Lea	Ducharme, Suzanne	Lane, Ruth	Parker, Ann
Auger, Pauline	Eaton, Dorothy	Larkin, Walter	Parks, Ira
Auger, Richard	Elliott, Sandra	Larson, Donna	Pearson, Priscilla
Banks, Phyllis	Emerson, John	Lee, Richard	Perry, Edward
Bauch, Frances	Falardeau, Joseph	Leedberg, Raymond	Phillips, Gail
Bean, Barry	Fogg, Dorothy	Lemire, Elaine	Pihl, Sandra
Bellwood, Leslie	Gagnon, Lois	Lessard, Doris	Popplewell, Barbara
Berger, John	Giffin, Lois	Livingston, Charles	Purdy, James
Bissonnette, Robert	Gilbride, Donald	Lupien, Linda	Reeves, Jane
Blackadar, Brenda	Golubisky, Anne	MacKenzie, William	Regan, Jacqueline
Blecharczyk, Stasia	Grondine, Claire	MacLean, Donna	Reid, Lois
Blomberg, Karin	Hall, Janet	Magnant, Mary	Robinson, Ellen
Boumil, Virginia	Hall, John	Manahan, Patricia	Rogers, Beverly
Braga, Roberta	Hanson, Brenda	Mason, Joyce	Rousseau, Robert
Buchan, Bonnie	Hayes, Ruth	Maybury, Judith	Roymans, Emil
Burke, Maureen	Henkel, Harold	McBride, Gerald	Russell, Carl
Burlamachi, Mark	Hicks, Bruce	McClellan, Henry	Santamour, Carol
Cafiso, Marion	Hollingworth, Peter	McConeghy, Robert	Savard, Linda
Carkin, Sandra	Hooper, Francis	McDonough, Donald	Scaplen, John
Carkin, Wesley	Hope, Elizabeth	McGovern, Edmund	Schliebus, Robert
Churchill, Gail	Horton, Frederick	Mentas, George	Shawcross, Ronald
Clark, Gerald	Hughes, Robert	Mercier, Thomas	Shay, Susan
Cole, Robert	Jason, John	Mercier, William	Swallow, Thomas
Connor, Janet	Johnson, Alice	Mooers, Neil	Swett, Ruth
Connors, Jacquelyn	Johnson, David	Morton, Deborah	Tassios, George
Conrad, Mary Eileen	Johnson, Susan	Mosley, Leonard	Tebeau, Carolyn
Constantine, Bette	Johnstone, Robert	Mountain, Virginia	Thomas, Nancy
Cook, Prudence	Kaknes, Jane	Mowll, Judith	Thomson, Gaye
Corfield, Norman	Kay, Frederick	Mueller, Paul	Townsend, Johanne
Coupe, Bradford	Kennedy, Mary Ann	Murphy, Judith	Tucker, June
Crane, Eugene	Kiberd, Richard	Murphy, Margaret	Turner, George
Crocker, Richard	Kirk, Thomas	Nadeau, Leon	Walsh, William
Cummings, John	Koch, Geraldine	Nault, Marie	Watson, Deborah
Curran, Joseph	Korsak, Charles	Nichols, Lois	Watt, Robert
Cutcliffe, Bruce	LaCourse, John	Nicholson, Paula	Welch, Roger
DeBarge, Paula	LaHaise, Paul	Olsen, Edith	Woods, George
DeSelle, William			Ziembra, Frances

Freshman Class



President — Sandra Dupee

Treasurer — Frederick Field

Vice-President — Joyce Knapp

Secretary — Linnea Peterson

Student Council Treasurer—Elizabeth Vaipan

Student Council Representative—Ronald Desmarais, Judith Harrington

Faculty Advisers — Shirley H. Hardy and John J. Dunigan, Jr.

Aker, Joyce	Conway, John	Gibbons, Carole	Manahan, Louise	Rondeau, Lillian
Anderson, Donald	Cooke, Wendy	Gifford, James	Manseau, Richard	Sarre, David
Armitstead, Cheryl	Corey, Robert	Gould, Burton	Marsden, Clifford	Shay, Martha
Auger, Gloria	Cossette, James	Gravelle, Jo-Ann	Marshall, David	Shell, Gary
Avila, Evelyn	Cullen, John	Grondine, Estelle	Masson, Louis	Shore, Donald
Ayers, Linda	Curran, Catherine	Hadley, Edward	McEnaney, Raymond	Silva, Beverly
Ayotte, Raymond	Daron, Colleen	Hadley, Vaughn	McMaster, Roy	Simpson, Charles
Banks, Cynthia	Decatur, Joan	Haithwaite, G. Raymond	McSheehy, Ronald	Spaulding, Brenda
Barker, Donald	DeFlumeri, Sherrill	Hall, Edward	Medeiros, Wayne	Spinazola, Gwendolyn
Beauregard, Richard	Delaney, James	Hansen, Ann	Michalowski, Mary	Spinazola, Joseph
Beliveau, William	DeSelle, Joan	Harper, Marilyn	Morris, Gertrude	St. Pierre, Judith
Bell, Norma	Desmarais, Ronald	Harrington, Judith	Morrison, Charles	Stamp, James
Belleville, Shirley	Dionne, Elaine	Hart, John	Mortali, Roberta	Staveley, Joseph
Benoit, Suzanne	Dirubbo, David	Hoxie, Richard	Niemaszzyk, Barbarann	Staveley, Priscilla
Bernacki, Katherine	Dittmer, Carlyn	Hehir, Timothy	Nolet, Ralph	Sullivan, Daniel
Berry, Laural	Donaldson, Barry	Kemp, Sharon	Oczkowski, Joseph	Tedesco, Leo
Blake, Sandra	Dorsey, John	Kirk, Arthur	Olsen, Geraldine	Therault, Robert
Blomgren, Roger	Drescher, Edwin	Kirkpatrick, Beverly	O'Rourke, Maureen	Tousignant, Constance
Blott, Eleanor	DuCom, Patricia	Knapp, Joyce	O'Sullivan, Joan	Tower, Marion
Boudreau, Albert	Dunlavey, Patricia	Kneeland, Frances	Page, Pauline	Vaipan, Elizabeth
Boudreau, Robert	Dupeee, Sandra	Knowles, Judith	Patterson, John	Vinecombe, Linda
Bowser, Carole	Dyke, Walter	Kydd, David	Peterson, Linnea	Walker, Barbara
Briana, Carolyn	Eaton, Geraldine	Lamy, Carol	Pettee, F. Christy	Walker, Carolyn
Brodley, Raymond	Egan, Joanne	Laughton, Charles	Phelps, Thomasina	Wells, Sue Ann
Brown, Gene	Engel, Ronald	Lebedzinski, Barbara	Picken, Peter	Whalen, Ann
Burkinshaw, Barbara	Eno, Douglas	Lee, Karen	Pigeon, Mary	Whalen, Louise
Carey, Nancy	Fanning, Clarence	LeMasurier, Eunice	Pope, Patricia	Whitcomb, Warren
Caron, Gary	Farrow, David	Litchfield, Deborah	Pouliot, Ernest	Wolcott, Alvin
Cassidy, Shelia	Field, Frederick	Littlefield, Elaine	Pouliot, Priscilla	Wolfgang, Andrew
Chute, Sandra	Fisher, Mary	Lobas, Royal	Prescka, Sally	Woods, Geraldine
Clark, Carlton	Foster, Michele	Logan, James	Ready, Dennis	Worthley, Kelvin
Clark, Kathleen	French, Diane	MacKinnon, Robert	Reid, Doris	Zabierek, Judith
Collins, Eleanor	Gervais, Robert	MacQueen, Rosemarie	Remick, Sara	Znoj, Patricia
Connor, Patricia	Gervais, Roland	Majeau, David	Ricciardi, Diana	







The Athletic Association



HOMEROOM REPRESENTATIVES

GIRLS

Janet Bell
Carole Bowser
Elizabeth Clark
Kathryn Crane
Martha Crane
Sandra Dupee
Janet Hall
Joyce Knapp
Judith Kroll
Donna MacLean
Barbara McEnaney
Susan Medin
Mary Michalowski
Mary Reeves
Priscilla Staveley
Elizabeth Vaipan
Sandra Witts

Boys

Donald Anderson
Daniel Burke
Bradford Coupe
John Cummings
Donald Desmarais
Albert Egan
Peter Goodwill
David Kydd
John LaCourse
Donald McDonough
Kenneth McGillivray
Paul McIntire
Emil Roymans
Charles Simpson
Peter Vennard
Warren Whitcomb
Kelvin Worthley

Faculty Advisers — Walter Copley, John T. Conrad

This year the Athletic Association is made up of almost the entire student body of Chelmsford High. In the middle of the year, Mr. Walter Copley, who had been promoting our progress, resigned from our school to join the faculty of Lowell State Teachers College. Mr. John T. Conrad came to our assistance and helped us for the remainder of the school year.

SPORTS



Joan Bujnowski

Cheerleaders



SENIORS

Geraldine Keddie, Capt.
Carolyn Howell
Marilyn Kydd
Sandra Ricciardi

JUNIORS

Carol Anderson
Valerie Brocombe
Martha Crane
Ruth Harper
Barbara McEnaney
Patricia Nordin
Mary Reeves
Judith Shedd

SOPHOMORES

Gail Churchill
Karin Blomberg
Deborah Watson

Arrayed in maroon Bermuda skirts, shaker-knit sweaters, and knee socks, the Chemsford cheering lassies encouraged the gridiron heroes to victory during the autumn months. Loyal to the cheerleaders was their new coach, Miss Margaret Kavanagh, who accompanied them to every game. Fancy marching and snappy cheers were trade marks of this year's squad.

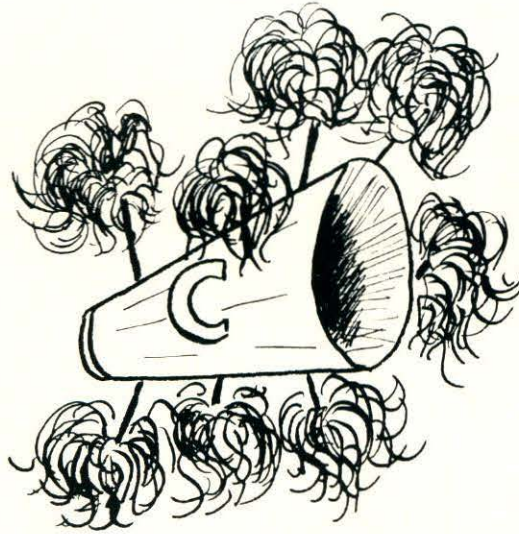
Santa Claus was welcomed to Greater Lowell in the midst of a fancy stepping trip through downtown Lowell.

Early in December the girls changed uniforms and alternated costume and color amid much confusion. The close quarters of the gymnasium increased their enthusiasm and gave opportunity for attempting more intricate cheers. "Sounding Off" by the cheering squad was a constructive way of aiding school spirit. It was with sincere gratitude to their coach, Miss Margaret Kavanagh, that the cheerleaders finished a most successful season.

C-H-E-L-M-S-F-O-R-D



T-E-A-M Yea, Team
T-E-A-M Yea, Team
T-E-A-M Yea, Team
Ra, Ra, Team Yea !!



F-I-G-H-T Fight
F-I-G-H-T Fight
F-I-G-H-T Fight
you gotta fight
boys you gotta
FIGHT !!



Football

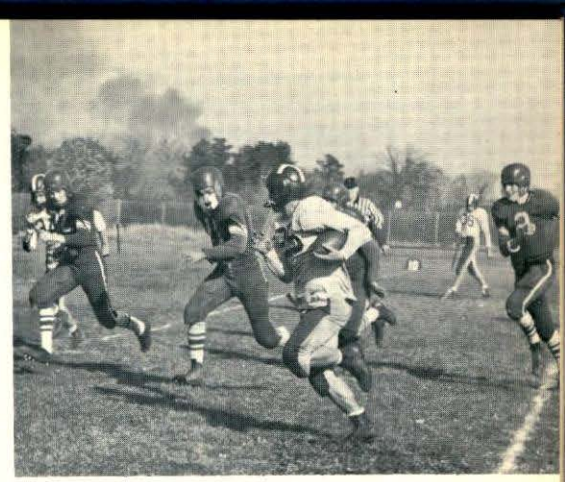


Our football team, under our hustling and able co-captains Bob Prescott and Bert Scaplen, completed the best season in the twenty-nine year history of Chelmsford High School football. Coach Joe Nolan and his staff, Mr. Gene Macomber and Mr. Frank Hill, took a green inexperienced squad and turned it into a unit that finished third in the state for Class D schools. Prior to the opening of the grid season this prediction was made for the team. "With luck a three win - six loss season." The final record is eight wins — one loss.

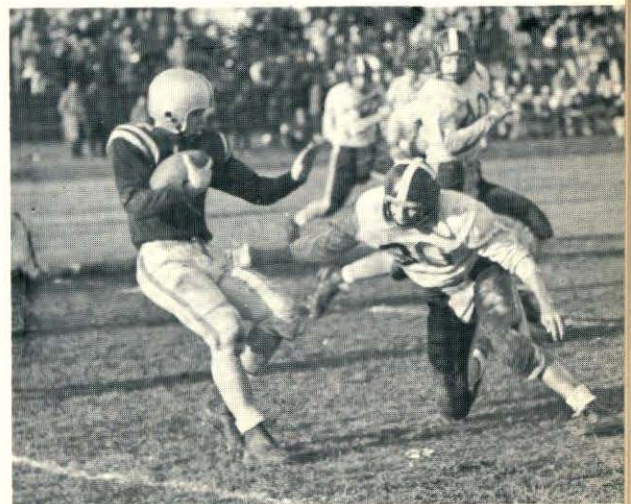
The campaign started with a 48-0 rout of hopeless Wilmington. One could then tell of the Lions' promise but also of their inexperience. The latter showed up the following Saturday when the Lions posted their only loss of the year to Tewksbury. From that game on, the "Maroon and White" played like a different team as they whipped Dracut, defending champs, by a 26-7 count and a strong Class C Punchard combine 25-7. In the Punchard game, the Lions broke a ten game winning streak at that school and appeared to be at their peak. The next three games were all resounding victories as Ayer, Ipswich and Weston were taken in stride. With just two games of the regular season remaining, the Lions were face to face with a powerful Class C North Andover team which, boasting a formidable 6-1 record, also fell before the Nolanmen to the score of 20-0. This left only the traditional game with Billerica on Thanksgiving. With the team in a position to have the best record in Chelmsford football history, the Lions did not let it go as they fought to a 27-6 victory.

This season also found two of our boys on the All-Scholastic squad and nine boys made the All-Suburban list, five of which made the first team. Through graduation this year the team will lose co-captains Bert Scaplen and Bob Prescott, Bob Ingalls, Paul McIntire, Ron Aubrey, Pete Goodwill and Wayne Kilburn. Best of luck to next year's team and its co-captains Fred Gleason and Bob Gagnon.

The team and the coaching staff are most grateful to their many loyal rooters and to the members of the P. T. A. for their inspiring support throughout the season. Also, they extend their sincere thanks to Mr. Edward Krasnecki of the Chelmsford Newsweekly for the jackets he presented to the lettermen. As usual, the members of the Booster Club manifested their interest and faithfulness to our athletes. During the season it provided the towels for the hard working squad members. As a final gesture of goodwill, with contributions from our local merchants, the Boosters gave the boys a banquet and gala evening to wind up the season.



Chelmsford	48	Wilmington	0
Chelmsford	7	Tewksbury	20
Chelmsford	26	Dracut	7
Chelmsford	25	Punchard	7
Chelmsford	25	Ayer	0
Chelmsford	34	Ipswich	6
Chelmsford	47	Weston	6
Chelmsford	20	No. Andover	0
Chelmsford	27	Billerica	6
<hr/>		<hr/>	
Total for	259	Total against	52
Won - 8		Lost - 1	



A is the ambulance that's waiting outside
B is the bump that gets one a ride
C is the center who weighs half a ton
D is the dent when he falls upon one
E is the end who is towering and fast
F is the fullback who throws him the pass
G is the guard who holds down the line
H is the half and a chance to recline
I is the impact when two players meet
J is the jar from head down to feet
K is the kick one gets in the face
L is the limp from foeman's embrace
M is the mud that gets richer each minute
N is the nose that gets rubbed around in it
O is the opening seen in the line
P is percussion from hips, calves, and spine
Q is the quarterback, refusing to yield
R is the run he makes down the field
S is the score, a million for us
T is the touchdown that made all the fuss
U is for under, one's apt to be
V is for nothing but our victory
W is for waterboy, most needed of all
X marks the spot where they piled on the ball
Y is for you, whose cheers help us go
Z is the zero we wish for our foe.

Perry Delmore '44



Field Hockey



The Chelmsford High School Girls' Field Hockey team, led by its co-captains, Janet Bell and Alberta Jones, has had a successful season this year under the able direction of Miss Carol Murphy. Miss Murphy, who came to us from the University of New Hampshire, has added spirit as well as know-how to our team.

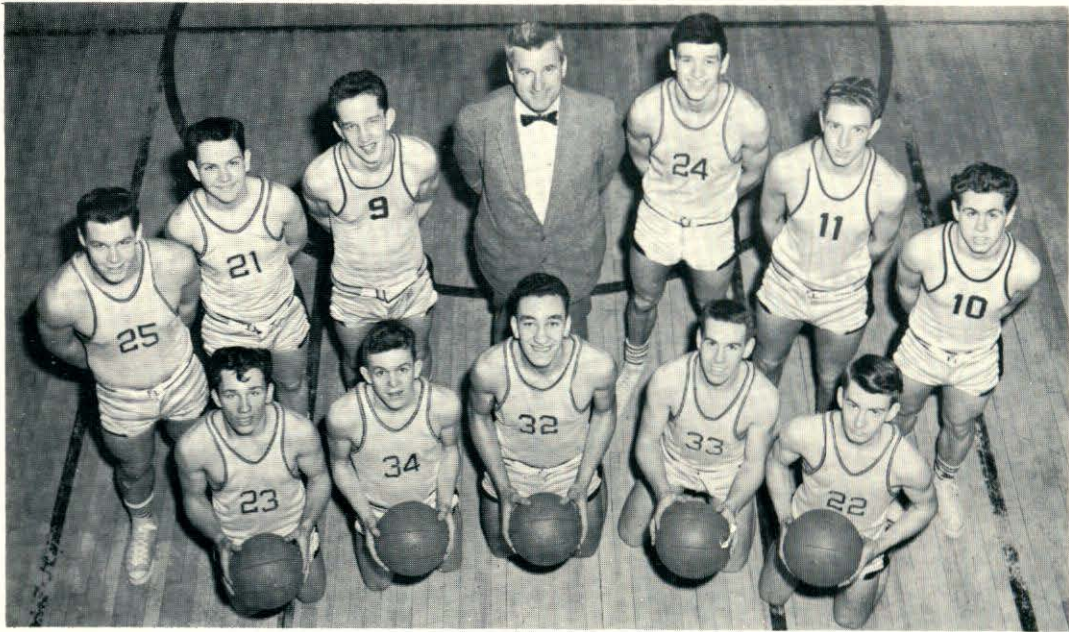
The team's points were scored by Janet Bell, Judith Kroll, Katherine Morrow, and Ann Marie Sehlstedt, who were backed with enthusiasm and skill by other players on the team.

Best of luck to next year's team co-captained by Ann Lovering and Beverly Wright.

SCORES							
CHS	0	Acton	2	CHS	0	Acton	1
CHS	3	Billerica	1	CHS	1	Woburn	0
CHS	5	Billerica	0	CHS	0	North Andover	1
		CHS	2			North Andover	2



Boys' Basketball



Once again our basketball team, under the expert guidance of Coach Murray B. Hicks and led by its hustling captain, Arthur Provençal, enjoyed another successful season. We compiled a creditable record of thirteen wins and five losses. We finished second to North Andover in the Greater-Lowell Suburban League. In league competition we had a record of ten wins and two losses, both to North Andover. In non-league competition we won three games and lost three. As in the past few years, we qualified for the Eastern Massachusetts Tech Tourney. The team journeyed to Natick but lost a hard fought game to Silver Lake 59 - 53. We wish the best of luck to next year's team and Captain Ken McGillivray.

SCORES

CHS	57	Pepperell	35	CHS	76	Dracut	42
CHS	84	Maynard	54	CHS	58	No. Andover	66
CHS	54	Pepperell	59	CHS	37	Weston	49
CHS	44	No. Andover	59	CHS	66	Tewksbury	58
CHS	50	Maynard	38	CHS	71	Wilmington	28
CHS	51	Tewksbury	18	CHS	92	Burlington	57
CHS	99	Wilmington	33	CHS	81	Billerica	33
CHS	72	Burlington	51	CHS	82	Dracut	48
CHS	62	Billerica	54	CHS	53	Silver Lake	59
WON 13				LOST 5			



MURRAY HICKS
Varsity Coach



FRANK HILL
J. V. Coach



Girls' Basketball



Although the girls on the basketball squad were not champions this year, they considered this a successful season. The satisfying experience of working together for the good of the team and of developing the true spirit of sportsmanship made this year one to be remembered.

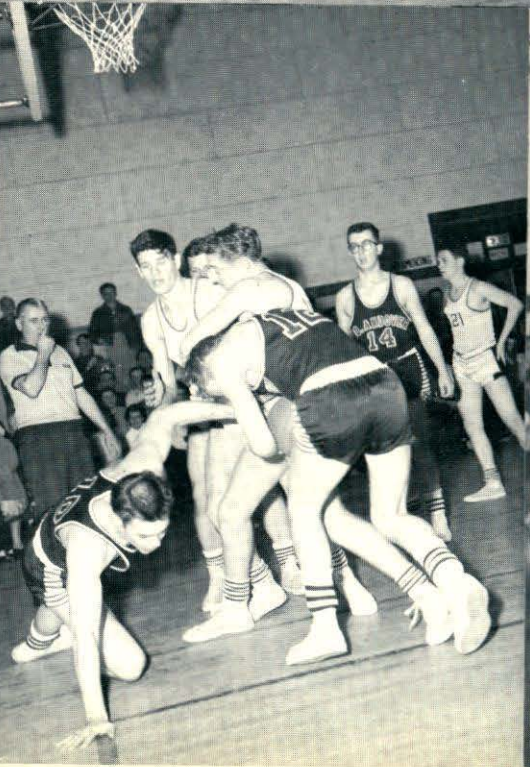
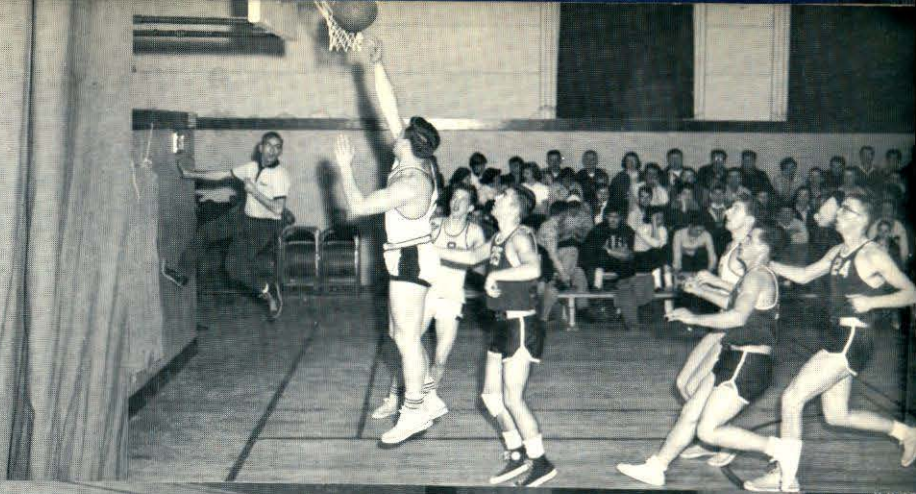
In the forward courts were Co-captain, Kay Morrow, Smitty Smith, and Berta Jones. In the back court were Co-captain Lila Crowley, Beth Simpson, and Anne Marie Sehlstedt. Pat Thompson, Polly Page, and Pat Paduch did fine jobs of substitution.

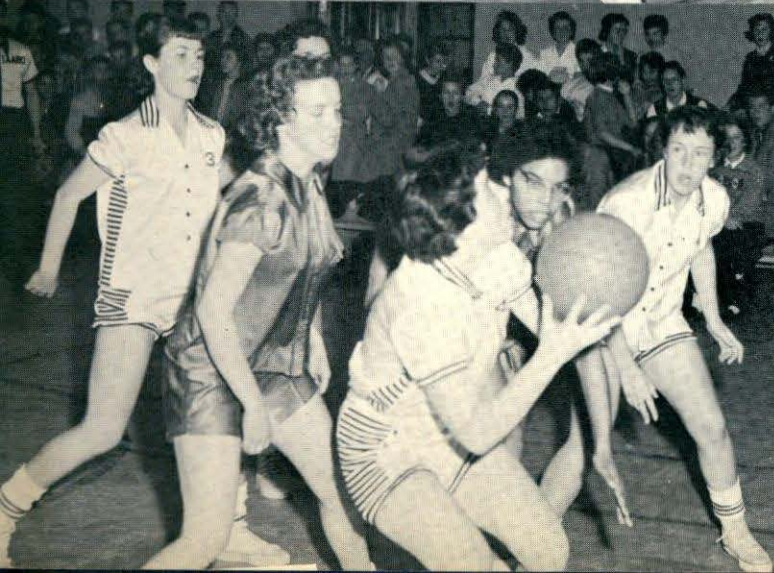
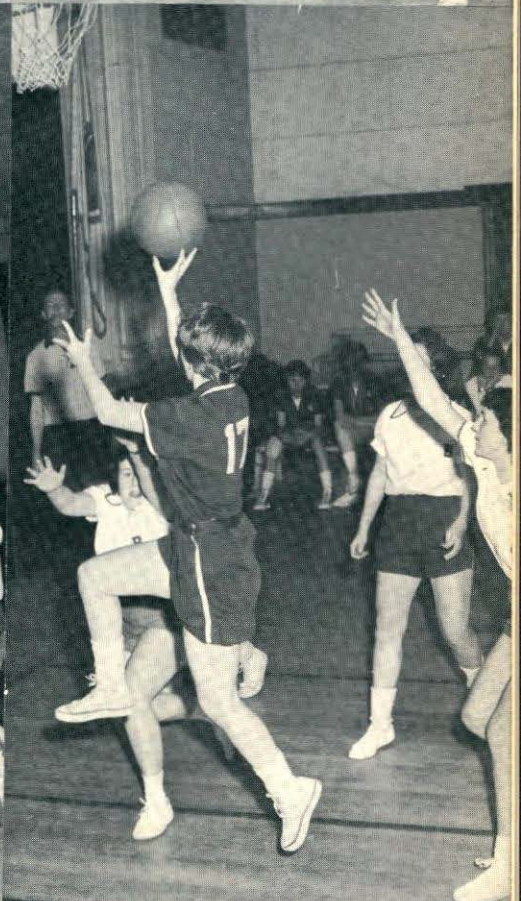
Much credit should be given to Miss Carol Murphy, coach, who came to us this year from the University of New Hampshire. We have every confidence that the team will be successful next year. With the excellent coaching of Miss Murphy and the leadership of Co-captains elect, Pat Nordin and Tisha Oliver.

SCORES

CHS	25	Westford	33	CHS	28	Billerica	27
CHS	82	St. Anne's	34	CHS	67	Dracut	34
CHS	49	St. Joseph's	36	CHS	55	No. Andover	47
CHS	30	Methuen	37	CHS	33	Westford	36
CHS	50	No. Andover	61	CHS	58	Tewksbury	60
CHS	70	St. Joseph's	39	CHS	43	Wilmington	41
CHS	48	Tewksbury	41	CHS	52	Burlington	63
CHS	33	Wilmington	32	CHS	57	Billerica	42
CHS	45	Burlington	62	CHS	58	Dracut	50







Baseball



Last year's team under the watchful eyes of Coach Nolan and the leadership of Co-captains John Goodwill and Dave Weeks compiled a creditable record of 6 wins and 6 losses. In league competition we posted double victories over Tewksbury and Burlington, plus single wins over North Andover and Wilmington. We finished tied for third with Tewksbury in a strong Suburban League. The highlight of the season was Dave Weeks' 3-0 no hit win over Burlington. Through graduation we lost Co-captains Weeks and Goodwill and such other stalwarts as Murray Hicks, Gene Gilet, Jack Doole, Mike Desmarais, and "Red" Molleur.

Since the season will not have started when this book goes to press, we shall include only the schedule of this year's team and the wish for the best of luck to Co-captains Jerry Robinson and Pete Goodwill and the rest of the squad.

SCHEDULE:

April 23	Wilmington	May 17	Methuen
April 26	Billerica	May 21	Punchard
April 30	Tewksbury	May 24	at Tewksbury
May 3	at Burlington	May 28	at Billerica
May 7	at Wilmington	May 29	Dracut
May 10	North Andover	May 31	at Dracut
May 14	Burlington		

Athletic Awards

BASEBALL (1956)

John Goodwill, Co-captain
David Weeks, Co-captain
Ronald Bell
Omer Desmarais
John Doole
Robert Gagnon
Eugene Gilet
Peter Goodwill
Bryan Hehir
Murray Hicks
Charles Korsak
William Korsak
Donald McDonough
Kenneth McGillivray
Phillip Molleur
Gerald Robinson
Conrad Stone
Daniel Russell, Mgr.

FIELD HOCKEY

Janet Bell, Co-captain
Alberta Jones, Co-captain
Lea Auger
Lila Crowley
Judith Kroll
Katherine Morrow
Francine O'Sullivan
Patricia Paduch
Linnea Peterson
Kristin Roymans
Ann Marie Sehlstedt
Eileen Conrad, Mgr.
Patricia Oliver, Mgr.

FOOTBALL

Robert Prescott, Co-captain
Albert Scaplen, Co-captain
Ronald Aubrey
Ronald Bell
William DeSelle
Robert Gagnon
Frederick Gleason
Robert Gleason
Peter Goodwill
Edward Hall
Joseph Hehir
Bruce Hicks
Robert Ingalls
Philip Johnson
Wayne Kilburn
William Korsak
John LaCourse
Paul LaHaise
Paul McIntire
John Nicodemus
Ira Parks
John Scaplen
James Sousa
Richard Morrissey, Mgr.

MAJORETTES

Lorraine Charest, Captain
Diane Archer
Carol Belleville
Dorothy Charest
Anita Crouse
Sandra Harvey
Joyce Mason
Barbara Popplewell
Nancy Small
Brenda Vincombe

BOYS' BASKETBALL

Arthur Provencal, Captain
Ronald Aubrey
Ronald Bell
Albert Egan
Peter Goodwill
Edward Hart
Robert Ingalls
Kenneth McGillivray
Albert Scaplen
James Sousa
Peter Vennard
Robert Gagnon, Mgr.

GIRL'S BASKETBALL

Lila Crowley, Co-captain
Katherine Morrow, Co-captain
Alberta Jones
Linda Lupien
Patricia Nordin
Patricia Oliver
Patricia Paduch
Pauline Page
Ann Marie Sehlstedt
Elizabeth Simpson
Carolyn Smith
Patricia Thompson
Kristin Roymans, Mgr.
Claire Watt, Mgr.

BAND

Phyllis Banks
Leslie Bellwood
Ruth Boumil
Elizabeth Bowers
Frederick Daron
Richard DeFreitas
Anne Golubisky
George Grenier
Deborah Hoyt
Mary Ann Kennedy
Richard Kiberd
Frederick Lane
Linda Lupien
Susan Medin
Neil Mooers
Barry Morton
Barry Ostman
Thomas Patton
Joseph Pimentel
Ellen Robinson
Mary Rocha
Nancy Thomas
Spiro Vrouhas
Roger Welch
Charles Wellington

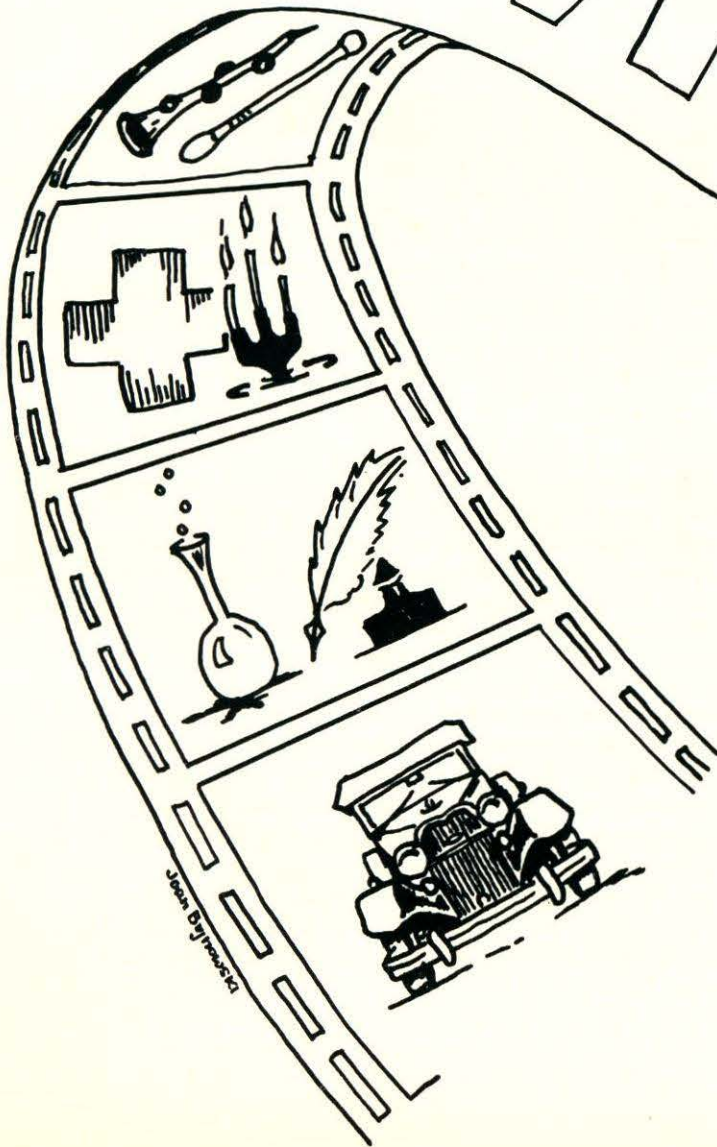
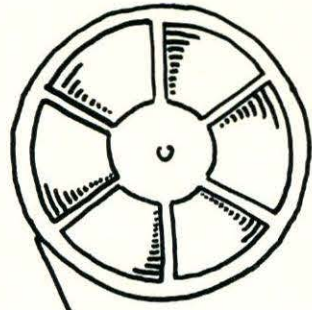
CHEERLEADERS

Geraldine Keddie, Captain
Karin Blomberg
Valerie Broscombe
Bonnie Buchan
Gail Churchill
Martha Crane
Ruth Harper
Carolyn Howell
Marilyn Kydd
Barbara McEnaney
Mary Reeves
Sandra Ricciardi
Judith Shedd
Deborah Watson

CHELMSFORD HIGH TALENT SHOW



ACTIVITIES



Student Council



President Robert Ingalls
 Vice-President Raymond Marcotte
 Recording Secretary Elaine Lemire
 Corresponding Secretary Claire Watt
 Treasurer Elizabeth Vaipan
 Senior Representatives Sandra Ricciardi, Richard DeFreitas
 Junior Representatives Ann Flynn, Ronald Bell
 Sophomores Representatives Patricia Paduch, Richard Crocker
 Freshmen Representatives Judith Harrington, Ronald Desmarais
 Assembly Chairman Kristin Roymans
 Welfare Chairman Martha Crane
 Social Chairman Susan Medin
 President of Senior Class George House
 President of Junior Class Albert Egan
 President of Sophomore Class Richard Morrissey
 President of Freshmen Class Sandra Dupee
 Faculty Advisers Frederick G. Bardsley, John T. Conrad

The Student Council, since its organization in 1950, has done much to foster the best interests of the student body.

This year, under the able guidance of Mr. Frederick Bardsley, we continued many of our established customs. We sold refreshments at all home football games. Book covers displaying the C. H. S. Lion were sold in the homerooms. The choice of programs for our paid assemblies was made by the Council as usual.

In keeping with the Yuletide spirit of giving, we selected a needy family to whom we presented clothing, food, and toys from the student body.

When Mr. Bardsley left C. H. S., Mr. Conrad became our adviser.

The Valentine dance and the Talent Show were both extremely successful affairs sponsored by the Council.

We wish to publicly thank Mr. Paul Bordeleau, Miss Margaret Kavanagh, and Mr. Costas Kevghas, for the many hours spent in producing such a fine show.

Our congratulations go to Richard DeFreitas, a Council member, upon being elected Chelmsford High School's Good Government Day representative.

All in all the Student Council has had a year of activity of which the members may be proud.

National Honor Society



President	Lila Crowley
Vice-President	Carolyn Smith
Secretary	Kristin Roymans
Treasurer	Ann Marie Sehlstedt
Faculty Adviser	Miss F. Christine Booth

SENIORS

Joan Bacon	Marcia Ricker
Elizabeth Boumil	Kristin Roymans
Linda Brown	Ann Marie Sehlstedt
Lila Crowley	Elizabeth Simpson
Robert Ingalls	Carolyn Smith
Raymond Johnson	Kathryn Thomas
Alice Perko	Claire Watt

JUNIORS

Pauline Bujnowski	Ann Lovering
Elizabeth Clark	Raymond Marcotte
Loretta Collins	Barbara McEnaney
Sandra Doubleday	Barry Morton
Deborah Hoyt	Thomas Patton
Judith Lamb	Roger Sullivan
Kathleen Landoch	Beverly Wright

The Chelmsford High School Chapter of the National Honor Society under the scholarly leadership of Miss F. Christine Booth, has now completed its fifth year at our school. The purposes of this organization are to create an enthusiasm for scholarship, to stimulate a desire to render service, to promote leadership, and to develop character in all students. Eligible juniors and seniors are installed after the second semester in an impressive ceremony to which their parents are invited. This year we were fortunate in having honor students from Punchard High School conduct this installation.

Each year the chief activity of this chapter is the sponsoring of "help sessions" for those seniors planning to take the College Board Examinations.

As it is a privilege and an honor to be a part of this organization, we hope that membership in this group will be the goal to which every student will aspire. Election to the National Honor Society is an achievement which sets any high school student on his way to success, whatever his plans may be.

Junior Red Cross



President Janet Bell
 Vice-President Judith Kroll
 Treasurer Judith Shedd
 Secretary Marilyn Hicks
 Faculty Adviser Marjorie B. Scoboria

HOMEROOM REPRESENTATIVES

Joan Bacon	Lois Griffin	Katherine Morrow
Elizabeth Bell	Lillian Gray	Patricia Oliver
Janet Bell	Claire Grondine	Francine O'Sullivan
Elizabeth Boumil	Helen Hayes	Marlene O'Sullivan
Linda Brown	Carole Henderson	Elizabeth Parent
Pauline Bujnowski	Alice Johnson	Diane Pomerleau
Elizabeth Clark	Judith Kroll	Helen Poplewell
Janet Connor	Kathleen Kulski	Jane Reeves
Prudence Cooke	Dolores LeMay	Carol Santamour
Lila Crowley	Ann Lovering	Georgia Simpson
Judith Cullen	Patricia Manahan	Judith Smith

The Junior Red Cross has again lived up to its reputation for varied activity under the efficient guidance of Miss Marjorie B. Scoboria. Meeting faithfully each Wednesday the members produced cartoon books, crossword puzzle books, and posters for the various holidays. These were sent to the Bedford Hospital and to the Tewksbury State Infirmary to provide hours of enjoyment for the patients. Because of increased membership, the sophomores and the juniors and seniors met on alternate weeks.

An International Correspondence Album was sent to Switzerland and a similar album was received from Junior Red Cross members at McKinley High School in Honolulu, Hawaii. It is hoped that our album furnished as much pleasure for the Swiss as the Hawaiian one did for us.

The annual membership drive resulted in one hundred per cent student body membership which rounded out a successful year for this worthy organization.

Baton Twirlers



SENIORS

Lorraine Charest, Capt.
Anita Crouse
Nancy Small
Brenda Vinecombe

JUNIORS

Diane Archer
Carol Belleville
Dorothy Charest
Sandra Harvey
Joan Linnell
Judith MacDonald
Joyce Mason

SOPHOMORES

Janet Hall
Paula Nicholson
Barbara Poppellwell

Director — Paul E. Bordeleau

This year the Baton Twirlers reported for practice to Band Director Paul E. Bordeleau. As an auxiliary unit of the band the twirlers presented a colorful and snappy performance at every football contest. Led by Captain Lorraine Charest, and ably assisted by Sergeant Brenda Vinecombe they marched in perfect step and performed with finesse the new techniques and arrangements of Mr. Bordeleau.

Drum Majorette Carol Belleville added an air of grace and pride as she led the band.



The three girls did justice to their gold uniforms and made colorful forerunners for the neat and trim maroon and white followers.

The twirlers added interesting manoeuvres to Santa Claus' escort through downtown Lowell. They also featured in the Memorial Day parade, and at the Lowell Field Day.

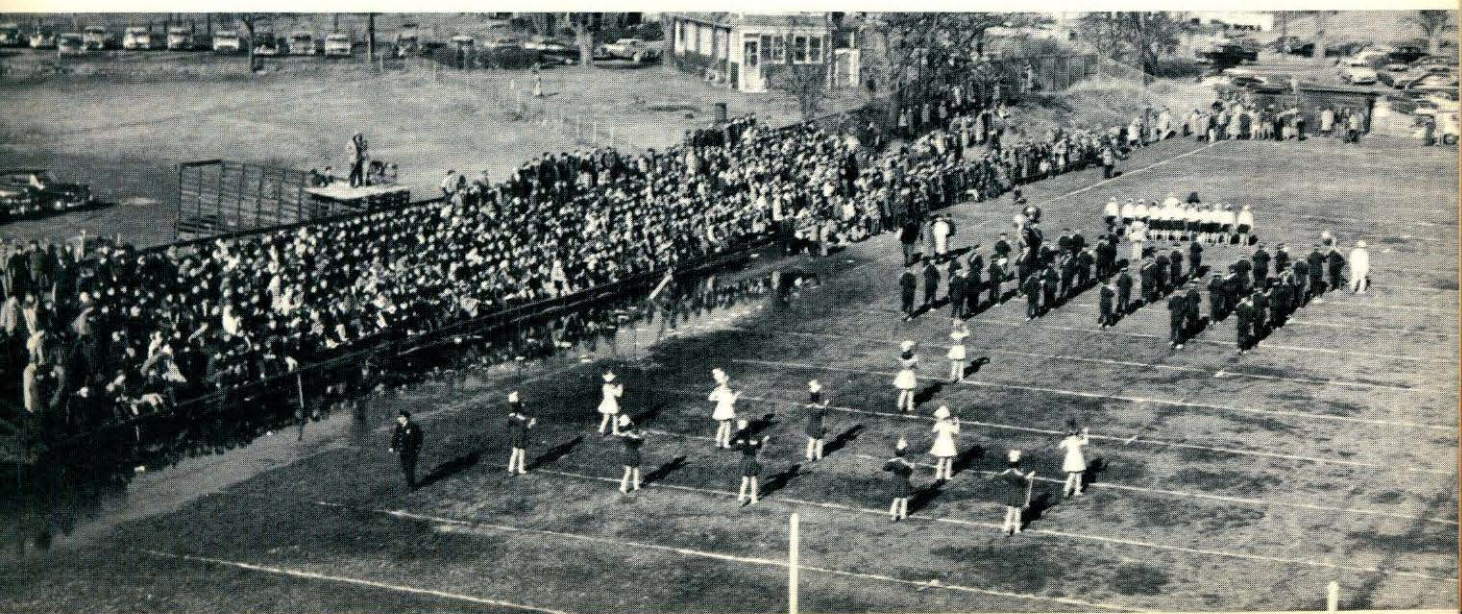
The Band



Once again the Chelmsford High School Band, under the expert leadership of Mr. Paul Bordeleau, has rendered us a year of "music in the air."

The year as usual has been a most active one, beginning in September with a trip to Massachusetts Institute of Technology, where a concert was presented by a Navy band. As in other years the band added spirit and zest to the football games, performing faithfully at home and away. The auditorium rang with music for our assemblies, both pep and paid, and the annual band concert was a tremendous success. In May, the band journeyed to Concord to attend the Northeastern Music Festival, and as is customary, led the annual Memorial Day Parade. Another successful year came to a close for the band as the seniors marched down the aisle to the measured beat of "Pomp and Circumstance."





Glee Club



This year we have two glee clubs at Chelmsford High School—the Girls' Glee Club and the mixed Glee Club. Under the direction of talented Mr. Paul Bordeleau, they have completed another successful season performing at concerts, assemblies, P. T. A. meetings, and the like, and have always been well received. Both groups have worked hard and have contributed much to the spirit and reputation of our school.



The Science Club



President John McCoy
Vice-President Paul Thompson
Secretary Barbara McEnaney
Treasurer Ann Flynn
Adviser Vincent C. Foderaro

The purpose of the Science Club is to provide the members with a wholesome and valuable way of spending leisure time. In the development of a project chosen and constructed by himself, each member is given an opportunity to put into practice something which he has learned or which stimulated his curiosity in the various science classes at Chelmsford High School.

On November 2, 1956, under the direction of Mr. Frederick Bardsley, the former adviser, a successful Science Night was held. Its purpose was to demonstrate the progress of the science and mathematics classes and to present Mr. John Thompson who spoke on "The Atom and Food."

On March 27, the annual Science Fair presented the projects of the members for examination by parents and friends and for evaluation by judges. The prize-winning exhibit was sent to the Regional Fair at the Massachusetts Institute of Technology in April.

The exhibits of five members represented Chelmsford at the Lowell Technorama at Lowell Technological Institute.

Mr. Vincent C. Foderaro, our new adviser, has competently and enthusiastically carried on the work in the Science Club so ably started by Mr. Frederick Bardsley and earnestly encourages the members to continue to explore the opportunities of science.

Lamplighters



MEMBERS

Carolyn Altemus
Janet Bell
Harry Brown
Pauline Bujnowski
Susan Cahill
Marie Castellano
Elizabeth Clark
William Delaney
John Flavell

Judith Kroll
Frederick Lane
Paul McIntire
George Mentas
Diane Pomerleau
Eileen Shaughnessy
Judith Smith
Richard Thayer
Janice Webster

Faculty Adviser — John J. Dunigan, Jr.

“The movies are better than ever.” The Lamplighters, under the direction of Mr. John Dunigan, have completed another successful year. They have maintained a fine reputation for keeping our pupils well informed through educational films. These students are taught to run, reload, and set up the audio and visual equipment. Several new pieces of equipment have been added this year such as Hi-Fi, a movie projector, and a film strip projector.

Dress Club



SENIORS

Joan Bacon
Elizabeth Bell
Elizabeth Boumil
Linda Brown
Janice Brown
Joan Bujnowski
Lillian Gray
Alberta Jones
Joanne Jason
Judith Kroll
Kristin Roymans
Ann Marie Sehlstedt
Elizabeth Simpson
Carolyn Smith
Claire Watt
Ann Whalen

JUNIORS

Pauline Bujnowski
Elizabeth Bowers
Elizabeth Clark
Frederick Daron
Ann Flynn
Ann Lovering
Diane Pomerleau
Elizabeth Parent
Mary Rocha
Judith Smith
Beverly Wright

The members of the Press Club, report for assignments every Thursday morning. Happily roaming the corridors during activity periods on the days following they seek major information from every source possible; from every teacher at one time or another, from the guidance office, from the coaches, and from the principal's office. By Tuesday the articles have been edited and typed and are ready for delivery to the North Chelmsford and the Chelmsford correspondents of the Lowell Sun and to the Chelmsford Newsweekly. In this way, the general public in Chelmsford is kept informed of the many and varied activities of Chelmsford High School. The club is indeed fortunate to have the efficient and skillful aid of its adviser, Mrs. Helen R. Poland.

Dramatic Club



President Katherine Morrow
 Vice-President Francine O'Sullivan
 Secretary Marilyn Hicks
 Faculty Adviser Martha Kinneen

The Chelmsford High School Dramatic Club became active again this year under the direction of Miss Martha Kinneen. The group, sparked by Miss Kinneen's sincere interest in the drama, read and discussed an interesting and representative group of plays including *The Merchant of Venice* and *Othello* by Shakespeare, *Pygmalion* by George Bernard Shaw, *Our Town* by Thornton Wilder, *Winslow Boy* by Terrance Rattigan, and *The Emperor Jones* by Eugene O'Neill.

On April 4 and 5, the presentation of *Arsenic and Old Lace* by Joseph Kesselring was the highlight of the club's season. The members found this a most worthwhile and rewarding venture as, under Miss Kinneen's guidance, each found an opportunity to utilize his talent whether it was pounding out publicity, painting flats, planning the lighting, collecting props, organizing the costumes, holding the prompting book, or interpreting the lines of the characters in the play itself. All worked together, teacher and members, to make a most successful production.

Pupils taking part in the play were:

Abby Brewster — Marcia Ricker	Officer Klein — Roger Swallow
Ann Lovering	Mr. Gibbs — Robert Watt
Martha Brewster—Katherine Morrow	Jonathan Brewster — Albert Egan
Janet Bentley	Dr. Einstein — Raymond Marcotte
The Rev. Dr. Harper — Gerald McBride	Officer O'Hara — George Mentas
Teddy Brewster — John Fisher	Lt. Rooney — Richard McDonough
Officer Brophy — Jay Whitesides	Mr. Witherspoon — Robert McConeghy

Driver Education



This year the Driver Education class was bigger than ever. Mr. John Dunigan, who has so capably and faithfully served us, and his able assistant Mr. John Hughes, guided 90 anxious "license seekers" to success.

Fifty pupils signed up for the first semester; forty more for the second.

After learning the fundamentals of mechanics and the rules of the road in the classroom, the eager drivers-to-be took to the highway, with this thought in mind—"Drive Safely. The life you save may be your own."

"Let's learn safety from others.
Let's practice safety ourselves.
And let's teach safety to others."

As the book says . . .



What a day . . .



I like it here . . .



Oh, no you don't . . .



I expect your best effort . . .



Good morning . . .



Oh, Pete . . .



I'll initial it . . .



The law of gravity . . .



All right, boys . . .



Come now . . .



I'll see you later . . .



Oh - Oh . . .



What have we here . . .



Stop that noise . . .



Music's the thing . . .



I'll just check on that . . .



Get going . . .



We must get started . . .



Certainly, I'll help . . .



History shows us . . .



It's a good day . . .



It is not too difficult . . .



Now in industry . . .



Class History

FRESHMAN YEAR

With faces clear, fresh and expectant, we, the great and wonderful Class of 1957, enter in the year 2 B. C. (Before Cats). "Here we are! Where do we go?" Here we are, the last of the pre-war kids, the beginning of the problem child. For a while we follow the pattern of C. H. S. Up the stairs in the West, down the stairs in the East. Blue slips for absence, white ones for detention. Homework is done every night. Daily races down the hill to lunch. Surprise! ! Two of our teachers are as new as we are, Mr. Kevghas and Mr. LeBlanc. Mr. Kevghas masterminds our first spelling bee, and Mr. LeBlanc leaves us. Mr. Eames becomes guardian of the white rat. Our football and basketball teams were Suburban Champs. We all made the grade!

SOPHOMORE YEAR

Swarms of new teachers! Mr. Marchant arrives in his own school bus, Mr. Carney replaces Mr. Eames in the dissecting department, Mr. Pickett inherits Mr. Healey's chores in Room 30, Mr. Verre succeeds Mr. Ciszek in building the boys' muscles, Mr. Bordeleau takes over for Mr. Hahn in the rhythm region, Miss Lynch carries on for Miss Cordingly and leads our girls to basketball championship, and Miss Kinneen arrives and we bury Julius Caesar all over again. Our boys become football champs while a real lion cavorts on the field. New lunch tables and chairs! Our first United Student Fund Drive. Six bus loads of students go to Boston Garden to see our boys play a great game. Miss Hehir produces another successful Talent Show. Band members sport new uniforms at the annual concert. Tercentenary Week arrives, bringing welcome respite from classes. "Oh, no! Not finals again!" Another year has sped by.

JUNIOR YEAR

Mad Junior chemists invade the lab. Many new faculty members—Mr. Copley takes over Math, science, and managing athletics; Mr. Bardsley becomes our fourth biology teacher; Mr. Caliri comes to teach physical education. Rock and Roll fever hits C. H. S. Those haircuts! Our first successful science fair. Our class rings for which we wait an eternity just to have the boys "leave them at home." Our dance to fatten our class treasury. All our teams place second. Another tremendous talent show! Our classmates are inducted into the National Honor Society. Screech of of tires and clouds of dust after school. The "chirpers" are off! The great exodus of faculty. Miss Greenberg leaves us for Springfield; Mr. Caliri, for the priesthood; Miss Lynch, for marriage; Mr. Marchant, for Malden; Mr. Pickett, for California. Another year has gone by.

SENIOR YEAR

Seniors at last!!! Our school is bursting at the seams and popping the freshman over to the McFarlin School. Scads of new faces in addition to a multitude of frosh, one hundred sixty of them. We welcome Miss Murphy and Mr. Macomber and introduced them to the gym. Mr. Byrne, Mr. Suchodolski, Mr. Georgakakos, Mr. Hankinson, and Miss Kavanagh are assigned to replace our former friends. The McFarlin yard is hottopped. Now the busses arrive at the bottom of that hill! (pant! pant!) Our dances are most successful, when and if the boys dance. What's this? something new has been added. . . midterm marks for EVERYONE! Mr. Georgakakos leaves, replaced by Mr. Giralomo; Mr. Bardsley leaves, replaced by Mr. Foderaro; and Mr. Copley leaves, replaced by Mr. Kirby. Mrs. Jewett, the school nurse who has tended our wounds and has been our good friend all through school is recovering from her accident. We miss her very much and hope she will be back soon. Her sister, Mrs. Groves, has done a fine job of easing the pain of polio shots and caring for our health in general. Shriek of the power saw and grumble of the bulldozer announce the departure of trees in our front yard and the disappearance of part of our parking lot. Progress demands widening of Billerica Street at our expense. Once again Shakespeare turns over in his tomb as *Macbeth* is murdered in Room 33. Prom time comes and goes with a flutter of gay dresses, a whiff of beautiful cor-sages, a flash of white jackets, and a collapse of the hoarded funds. A *banquet* this year in place of Class Day! Our Yearbook comes out, we picnic, and we graduate! "Today we follow, tomorrow we lead."

HUMOR



KATHRYN THOMAS

Pictures No 4

Ronald Aubrey	buying elevator shoes
Joan Bacon	in a frying pan
Elizabeth Bell	without a ring
Janet Bell	with a speech impediment
Robert Bennett	away from the troops
Janet Bentley	lacking courtesy
Donald Bergholm	as a family man
Beverly Bissonnette	working on a potato farm
Elizabeth Boumil	ducking hard work
Mary Brooks	without Barbara
Harry Brown	weighing 200 pounds
Janice Brown	doing sloppy work
Linda Brown	being inconsiderate
Joan Bujnowski	commanding a submarine
Marie Castellano	in shabby clothes
Lorraine Charest	with a muffled giggle
Cora Clark	raising her voice
Thomas Connors	in bell-bottom trousers
David Corfield	flunking the math course
Anita Crouse	wearing lipstick before 8:10 a. m.
Lila Crowley	as a bubble dancer
Maureen Curran	without a cheerful smile
Alan Davidson	looking for transportation
Richard DeFreitas	not knowing the "score"
Joyce Dirubbo	as a blonde
Brenda Fall	loud and noisy
John Flavell	teaching school
John Fisher	subbing for Tom Thumb
Clayton Foote	immature and unfriendly
Richard Gauthier	with a crew cut
John Gonsalves	the father of twins
Peter Goodwill	as a ballet dancer
Lillian Gray	feeling blue
Eleanor Hadley	doing a Calypso number
Dennis Harrington	being disagreeable and grouchy
Edward Hart	buying clothes at Robert Hall's
Marilyn Hartley	not full of ideas
Helen Hayes	on time for school
Marilyn Hicks	tall and lanky
Carolyn Howell	bashful and timid
George House	with a registered car
Patricia Hulick	without her license
Robert Ingalls	selling lawn mowers

Artist Can Paint

Joanne Jason
Raymond Johnson
Alberta Jones
Geraldine Keddie
Kenneth Kemp
Wayne Kilburn
John Kimball
Judith Kroll
Kathleen Kulski
Marilyn Kydd
Richard Lewis
Jessamine MacKenzie
Paul MacIntire
Lianne McMillan
Dorothy Moreton
Katherine Morrow
Pauline Murphy
Ralph Nickerson
Francine O'Sullivan
Alice Perko
Helen Popplewell
Robert Prescott
Arthur Provencal
Shirley Quintin
Sandra Ricciardi
Marcia Ricker
Gerald Robinson
Kristin Roymans
Albert Scaplen
Ann Marie Schlstedt
Elizabeth Simpson
Nancy Small
Carolyn Smith
Bertha Szuch
Kathryn Thomas
Patricia Thompson
Brenda Vincombe
Spiro Vrouhas
Claire Watt
Ann Whalen
William Williams
Sandra Witts
George Zaharoolis

with a Joan of Arc haircut
being kidded by no one
without a wad of gum
warming the bleachers
on a trampoline
as a square
as a woman hater
with nothing to read
lonesome on Saturday night
as a pirate
as a brunette
not making the best of it
as a fashion designer
with no place to go
unhappy or uncooperative
without the last word
with a loud voice
early to bed
minus admirers
not petite
not neat
as a chess player
not looking sharp
without a serious look
without a wiggle
not doing her best
waltzing
idle
without a grin
without her gift of gab
without a heart throb
with long black curls
as a police woman
without her friends
walking
without a pet project
not talking in history
as Freddie The Freeloader
driving the school bus
dashing to and fro
subbing for Elvis Presley
not efficient
as a chimney cleaner

Class

Ronald Aubrey	Leaves his teeth	In his mouth
Joan Bacon	Leaves a soft voice	To Bruce Brodley
Elizabeth Bell	Dedicates her poetry	To the English Dept.
Janet Bell	Leaves her smile	For Mr. Hankinson
Robert Bennett	Leaves a rut in the parking lot	To Bruce Baron
Janet Bentley	Leaves her accent	To Paul McGovern
Donald Bergholm	Leaves his reserved manner	To Al Egan
Beverly Bissonette	Leaves	In an Imperial
Elizabeth Boumil	Bequeaths her vocabulary	To all illiterates
Mary Brooks	Leaves her intellectual curiosity	To Barry Bean
Janice Brown	Bequeaths her Malden Yearbook	To 1958 Yearbook Staff
Harry Brown	Wills a match	To the Lamplighters
Linda Brown	Leaves her easy name	To Robert Schliebus
Joan Bujnowski	Offers her artistic ability	To Mr. Hicks
Marie Castellano	Leaves her smart hairdos	To Freshman girls
Lorraine Charest	Relinquishes her perfect strut	To Judy MacDonald
Cora Clark	Wills her gift of gab	To John McCoy
Thomas Connors	Leaves for the South	To fight for his rights
David Corfield	Grants his mathematical ingenuity	To Conrad Stone
Anita Crouse	Offers her songs	To Mary McLean
Lila Crowley	Leaves her captaincy	To Pat Oliver
Maureen Curran	Donates her brothers and sisters	To those who have none
Alan Davidson	Leaves automatic transmissions	To Drivers' Ed. Class
Richard DeFreitas	Offers advice	To the lovelorn
Joyce Dirubbo	Leaves	In a Bronze Bomb
Brenda Fall	Leaves her colors	To the Rainbow girls
John Flavell	Leaves his retreads	On Chelmsford Street
John Fisher	Wills his build	To Bob Gagnon
Clayton Foote	Leaves Footprints	In the mud
Richard Gauthier	Leaves	For Hollywood
John Gonsalves	Leaves Bufferin	To the sufferin' (teachers)
Peter Goodwill	Leaves Chicquita	To the Democrats
Lillian Gray	Donates a physics notebook	To Jay Whitesides
Eleanor Hadley	Leaves her natural curls	To Mr. Green
Dennis Harrington	Wills his skis	To Brad Coupe
Edward Hart	Leaves his crash helmet	To Fred Gleason
Marilyn Hartley	Leaves her babysitting jobs	To work in an office
Helen Hayes	Offers her pony tail	To Cynthia Killen
Marilyn Hicks	Leaves her punctuality	To Percy T.
Carolyn Howell	Offers encouragement	To those left behind
George House	Leaves his gavel	To a leading Jr.
Patricia Hulick	Leaves her station wagon	To Susan Cahill
Robert Ingalls	Wills his trumpet	To Joe Pimentel

Will

Joanne Jason	Offers her coiffeur	To Diane Archer
Raymond Johnson	Donates his hidden talents	To future Mech. Drawing students
Alberta Jones	Leaves her humor	For serious effort
Geraldine Keddie	Leaves a megaphone	To Bev Wright
Kenneth Kemp	Grants his glasses	To Mr. Nolan
Wayne Kilburn	Wills his turtle neck sweaters	To Freddie Brow
John Kimball	Bestows his love	On Freshman Girls
Judith Kroll	Leaves Honey	To Spin & Marty
Kathleen Kulski	Leaves to join	The Navy
Marilyn Kydd	Grants her dancing shoes	To Jim Sousa
Richard Lewis	Bequeathes a rosy blush	To Betsy Clark
Jessamine MacKenzie	Wills her freckles	To Dorothy Charest
Paul McIntire	Leaves his physique	To the undernourished
Lianne McMillan	Leaves her eyebrow pencil	To Maybelline
Dorothy Moreton	Leaves the Duplicator	To Secretarial Practice Class
Kay Morrow	Leaves her efficiency	To future office girls
Pauline Murphy	Wills her Irish temper	To Richard McDonough
Ralph Nickerson	Gives his Toni curlers	To Sandy O'Neil
Fran O'Sullivan	Presents her crown	To Pris Pouliot
Alice Perko	Leaves Dillon's	To Nancy Thomas
Helen Popplewell	Wills her ladylike manner	To Judy Cullen
Bob Prescott	Leaves his heirloom razor	To Bill O'Sullivan
Arch Provencal	Leaves his jokes	But no one wants them
Shirley Quintin	Leaves quietly	But will be missed
Sandy Ricciardi	Presents her wardrobe accessories	To Mary Reeves
Marcia Ricker	Wills her acting ability	To the Dramatic Club
Gerald Robinson	Wills his restless spirit	To Philip Johnson
Kris Roymans	Leaves a singer for C.H.S.	Her brother Emil
Bert Scaplen	Offers his sports know-how	To Kerry Quinn
Ann Marie Sehlstedt	Grants freedom of speech	To all
Beth Simpson	Leaves her petite size	To Armand Caron
Nancy Small	Leaves her modeling job	To Billy DeSelle
Carolyn Smith	Exchanges her Studebaker	For a Corvette
Bertha Szuch	Wills her long curls	To Judy Shedd
Kathryn Thomas	Leaves her horse	To Roy Rogers
Pat Thompson	Leaves the Volkswagon	To Leon Nadeau
Brenda Vinecombe	Leaves	To join Louella Parsons
Spiro Vrouhas	Donates a dozen eggs	To the Easter Bunny
Claire Watt	Leaves in her gentle way	For Jackson
Ann Whalen	Leaves 4 hoofs	For 4 Wheels
Billy Williams	Wills his tractor	To Gene Brown
Sandy Witts	Leaves her typing speed	To Marlene O'Sullivan
George Zaharoolis	Leaves for the	State House

SPONSORS

\$25.00

George C. Moore Wool Scouring Mill, North Chelmsford
Southwell Combing Company, North Chelmsford
Suburban Dairy, North Chelmsford

\$20.00

L. G. Balfour Company, Attleboro
William P. Proctor Company, North Chelmsford

\$15.00

Cherry & Webb Company, Lowell
Norman E. Day, Inc., Westford

\$10.00

Kenneth A. Cooke, D.M.D., North Chelmsford
A Friend
Harvey's Building Supplies, Chelmsford
Homberg Gym Suit Company, Somerville, Mass.
"King-Plymouth" Sales & Service, opp. City Hall, Lowell
J. Kydd & Sons, Inc., 809 Stevens Street, Lowell
Pease Motors, Lowell
A. G. Pollard Company, Lowell
Triangle Store & Service Station, North Chelmsford
T. V. Shack, Inc., 29 Vinal Square, North Chelmsford
University Cap & Gown Co., Lawrence, Mass.

\$7.50

Albert W. Willis, M. D., Chelmsford
Wood-Abbott Company, Lowell

\$5.00

Harry Bass., Inc., Lowell
The Bon Marche, Lowell
J. Edmund Boucher, M. D., North Chelmsford
Foster Braga, East Chelmsford
William J. Burbeck Co., Lowell's Most Modern Dairy
George Carriel, M. D., North Chelmsford
Chelmsword Newsweekly, Inc., Chelmsford
Ralph H. Clements, O. D., Lowell
Colonial Hearthstones, Antiques & Fine Arts, Chelmsford
Community Tree Service, Chelmsford
Crysler Company, North Chelmsford
L. Rodger Currie, D. D. S., Chelmsford
Eddie Hart's, Chelmsford
Evelyn's Pastry Shop, North Chelmsford
Fred's Gulf Service, North Chelmsford
Friendly Jack's Warehouse, Lowell
First Federal Savings & Loan Association, Lowell
H. E. Fletcher Company, Westford
Edward W. Freeman Store, Lowell
Gallagher's Drug Store, Lowell
Godin's Stores, Chelmsford
R. H. Greenwood & Sons, Chelmsford
Milton E. Hadley & Son Upholsterers, North Chelmsford
Dr. Jonathan Hall, Veterinarian, Lowell

SPONSORS (Cont.)

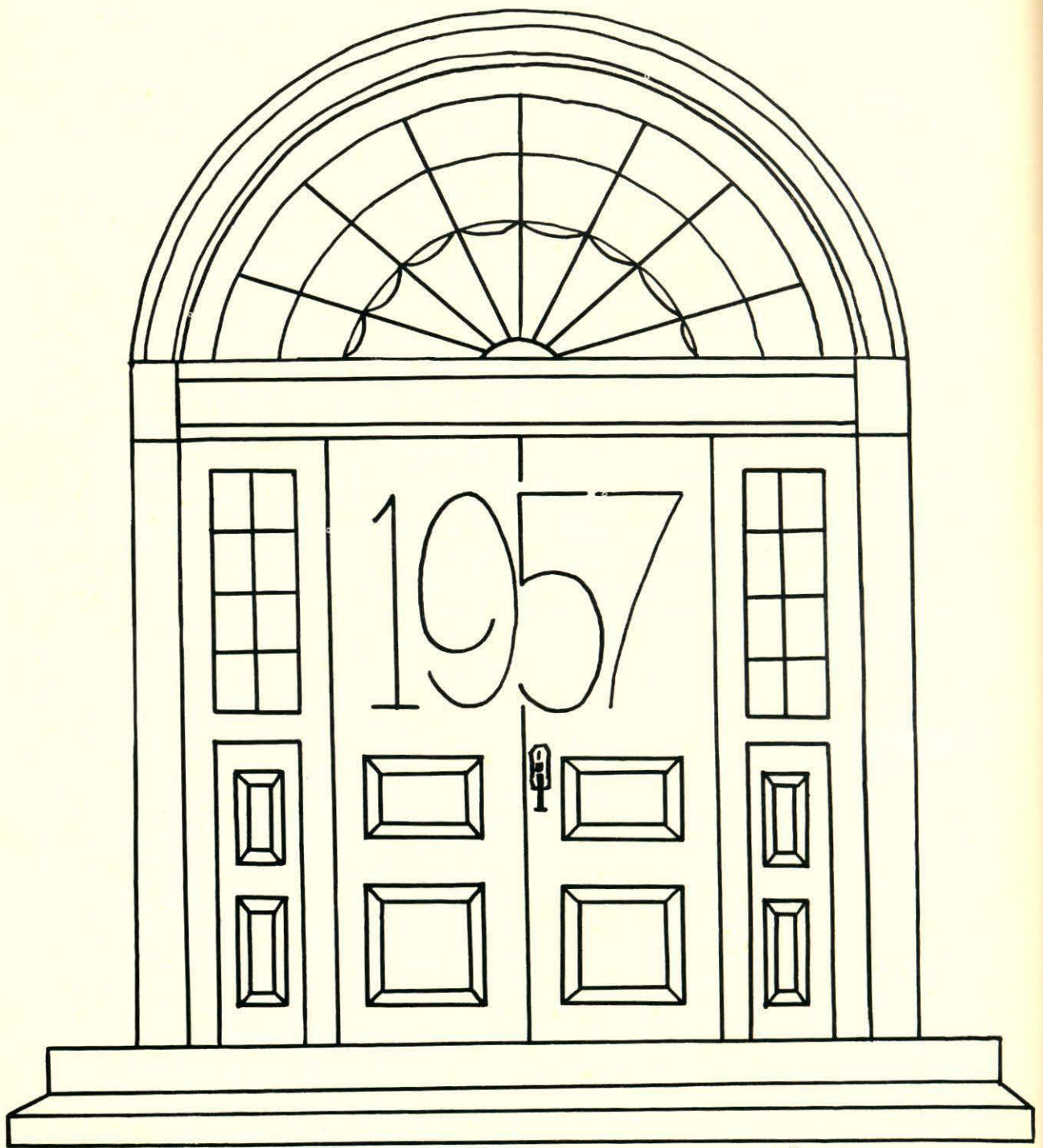
Harding Uniform & Regalia Company, Boston
Hi-Hat Roll-a-way, Lowell
Jack's Diner, Chelmsford
Josef's Inc., Lowell
Larson's Gulf Service, West Chelmsford
Dr. & Mrs. David A. Latham, Chelmsford
"Cal" Laughton, Florist, North Chelmsford
Lowell Five Cent Savings Bank, Chelmsford
Lowell Gas Company, Lowell
Lowell Motor Sales, Lowell
Lupien Farms, Inc., Chelmsford
Metro Music Center, Studios & Store, Lowell
Middlesex Supply Company, Lowell
Danny Mills' Men & Boys' Shop, Lowell
Molders Foundry Co., Inc., North Chelmsford
P. J. Murphy, North Chelmsford
Nabnasset Motor Service (Pete Morrow), Westford
New England Woodwind Exchange, Inc., Boston
Newman's, Lowell's Finest Store for Men and Boys, Lowell
North Chelmsford Hardware Co., North Chelmsford
Oxbow Cider Mill, Chelmsford
Page's Drug Store, Chelmsford
Carl A. E. Peterson, Chelmsford
Picken Printing Company, North Chelmsford
Princeton Market, North Chelmsford
Rainbow Spa, Chelmsford
Rex Potato Chip Co., Bradford
Ronnie's Texaco, Chelmsford
Septic Tanks Inc., Chelmsford
Skip's Diner, Inc., Chelmsford
Smiley's Service Station, Chelmsford
Roland J. Soucy T V & Appliance Co., Chelmsford
South Chelmsford Village Improvement Assoc., South Chelmsford
Sunny Acres Nursing Home, Chelmsford
Sunny Meadow Farm, South Chelmsford
Walter L. Twarog, M. D., Chelmsford
Gerard A. Vayo, Chelmsford
Vic's Drum Studio, Everything for the drummer, Lowell
Vinal Square Hardware, North Chelmsford
Vinal Square Variety, North Chelmsford
Charles M. Yarid, D. D. S., Chelmsford

OTHER CONTRIBUTORS

Alex's Service Garage, 89 Chelmsford Street, Chelmsford
Dr. & Mrs. John J. Barry, Chelmsford
Joseph J. Foley, Jeweler, Lowell
Mr. & Mrs. George Marchand, Jr., South Chelmsford

THANK YOU

We sincerely appreciate the help of our Official Class Photographer, **J. E. Purdy Company, Inc.**, of Boston, and of our professional and business friends. We are proud to have your names listed as sponsors of our Yearbook, **THE LION**.



JOAN BUJNOWSKI

We depart to lead.....



