

the

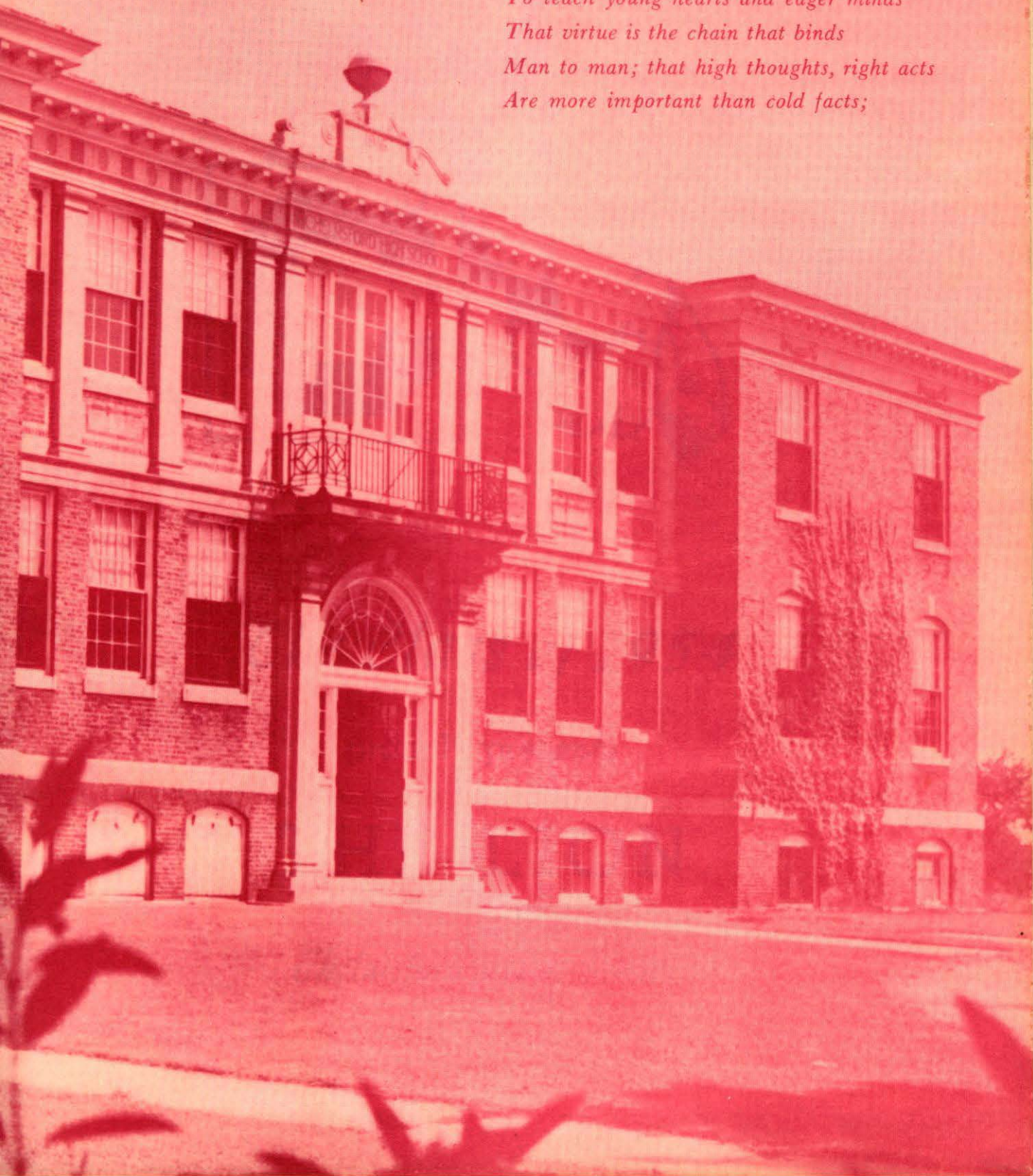
1000

1934



CHELMSFORD HIGH SCHOOL

*To teach young hearts and eager minds
That virtue is the chain that binds
Man to man; that high thoughts, right acts
Are more important than cold facts;*





The Class of 1954

proudly presents

THE LION

Chelmsford High School

CHELMSFORD

MASSACHUSETTS

FOREWORD

On the following pages are shown the various phases of student life in which we, the class of 1954 of Chelmsford High School, have participated during the past four years. Now comes the time when we must leave these familiar activities of youth to go forward to meet the complexities of maturity. However, as we face our new problems, we shall act with greater wisdom, having learned that in order to succeed we must follow our motto, "To Thine Ownself Be True." As the years pass, our appearances, our modes of life, and our acquaintances will change, but this book will always be a reminder of the many joyful experiences shared at Chelmsford High School.



Dedication . . .

In grateful recognition
of his competent teaching and easy manner,
his sincere friendliness,
and his ability to bring out the best in
all of us,
we, the Class of 1954,
humbly dedicate this yearbook
to
JOSEPH P. NOLAN

OUR SUPERINTENDENT



H. MORTON JEFFORDS

OUR PRINCIPAL



JOHN T. CONRAD

HIGH SCHOOL

In high school we discover there Is somewhat of a change
. . . . And we must study subjects that Are not a little strange
For instance, we have civics and The chemical domain
And in geometry we get The solid and the plane And
many are the courses we May follow or reject As long
as we advance as much As parents may expect But also
high school is a place To gain athletic fame Or in some
other manner to Acquire quite a name And while our
graduation seems Just one more stepping-stone We
think of college and we feel That we are really grown.

JAMES J. METCALFE

Board of Editors



The 1954 edition of "The Lion" is finished. In pictures and in words we have presented a summary of the outstanding events of our high school days, our scholastic achievements, our athletic progress, and our activities program.

At some future time, when we are in a reminiscent mood, we shall through the pages of this book relive the days of our youth. We hope as we recall our classmates we shall find that they have lived up to our motto, "To Thine Ownself Be True." If so, all our lives whether marked with distinction or mediocrity, will have been successful.

STAFF MEMBERS

Barbara Bowman
Dolores Collopy
Jean DeBarge
John Flynn
Sandra Gibbs
Valarie Gray
Joseph Marcotte

Carol Merryman
Patricia Norwood
Judith Poland
Philip St. Germain
Judith Walker
Dorothy Welch
Marcia White

LITERARY ADVISER — Helen R. Poland

BUSINESS ADVISERS — Ernestine Maynard, C. Edith McCarthy

FACULTY



C. Edith McCarthy, B. S. Ed.
Vice-Principal
Bookkeeping, Typewriting
Salem Teachers College



F. Christine Booth, A. B.
Latin, Mathematics
Colby College



Ernestine Maynard, B. S. Ed.
Stenography, Typewriting
Office Practice
Salem Teachers College



Earl Joseph Watt, A. B., A. M.
Harvard
On Leave



Helen R. Poland, A. B.
English
Boston University



Mildred M. Hehir, A. B., Ed. M.
French, English
Regis College
Fitchburg State Teachers College



Charlotte S. Carriel, B. A., Ed. M.
English
Mount Holyoke College
Fitchburg State Teachers College



Marjorie B. Scoboria
Algebra, Geometry
Trigonometry, Solid Geometry
Wellesley College, B. A.
Radcliffe College, M. A.



Shirley H. Emmons, B. S. Ed.
Typewriting, Junior Training
Boston University



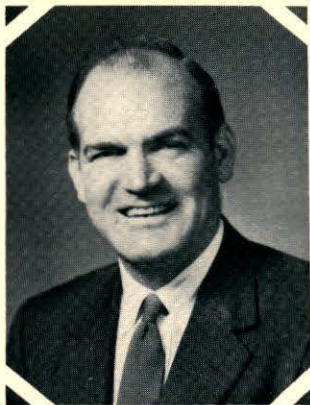
Murray B. Hicks, B. S.
Chemistry, Physics
Massachusetts State College



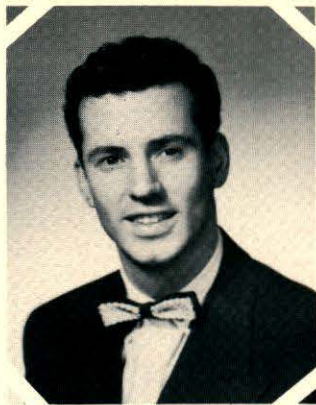
John J. Dunigan, A. B.
Social Studies
St. Anselm's College
Boston College



Lawrence P. Healey, B. S.
History
Boston College
Boston College Graduate School



Thomas Green, A. B., Ed. M.
 Guidance Director
 Social Studies
 Brown University



Costas Kevghas, A. B.
 English
 Suffolk University
 Suffolk Graduate School



Louis F. LeBlanc, B. S.
 Biology, Science
 Tufts College



Alden S. Eames, B. S., Ed. M.
 General Sciences, Biology
 Norwich University
 Harvard



Ignatius Ciszek, B. S., M. Ed.
 Director of Boys' Physical Education
 Arnold College
 Boston University



E. Ruth Greenberg, B. S. Ed.
 Director of Art Education
 Massachusetts School of Art



John Hahn, B. M. Ed., M. M. Ed.
 Boston Conservatory of Music
 Boston University



Ann Cordingly, B. S. Ed.
 Director of Girls' Physical Education
 Bridgewater State Teachers College



Helen M. Jewett, R. N.
 School Nurse
 St. Joseph's Hospital
 American Red Cross Nurse

HERIOTS





JOSEPH LEGER MARCOTTE

6 Ripley Street

North Chelmsford

Class President

Yearbook Staff 4	Football, J. V. 2, Varsity 3, Captain 4
Class President 3	Baseball J. V. 1, Varsity 2, 3, 4
A. A. Member 1, 2, 3, 4	Junior Red Cross 1, 2, 3, 4
Graduation and Reception Usher 3	Lamplighters 1
Band 1	Bowling League 3

“Joe”—our president and football captain—honor student and an excellent athlete—Judy’s beau—loyally supports the girls’ basketball team, or else—energetic brownie eater—plans to become an engineer—look out, Tufts, here he comes!



GERALD LIBBY HARDY

26 Sunset Avenue

Westlands

Class Vice President

Band and Concert 1, 2, 3, 4	Class Dance Committee 1, 2, 3, 4
A. A. Member 1, 2, Representative 3, 4	J. V. Basketball 1, 2, 3
Class President 1, 2, Vice President 3	Talent Show 2, 3, Winner 1
Football 1, 4	Junior Red Cross 1, 2, 3, 4
Inter-mural Basketball 3	

“Jerry”—Chelmsford’s bebop king—just loves green cars—twice our president and now our veep—enjoys life and female company—Mr. Hahn’s sidekick—anything for an argument—down to earth future, in burial vaults—success assured.



DOROTHY JANE WELCH

48 Highland Avenue

North Chelmsford

Class Treasurer

Yearbook Staff 4	National Honor Society 3, Secretary 4
Graduation and Reception Usher 3	A. A. Member 1, 2, 3, 4
May Festival Queen Attendant 2	Class Dance Committee 3, 4
Junior Red Cross 2, 3, 4, Representative 1	

Pretty, but quiet—an able and willing worker—Judy’s everyday pal—blushes easily—pink and white complexion—worthy friend—always well dressed—baby of the family—supplier of gum—a lady at all times—will make someone an efficient secretary.



WARREN EDWARD BILL

49 Richardson Road

North Chelmsford

Class Secretary

Class Secretary 3	A. A. Member 4
Baseball 1, 2, 3, Captain 4	Bowling League 1
Inter-mural Basketball 2, 3	

“Whitey”—non-committal—unhurried—good southpaw pitcher—usually listening to Arline’s chatter—

Whitey has one wave in his hair,
We want to know what keeps it there.

Sports, the services, industry, we give you Mr. Bill.

KURT ROBERT ANDERSON

30 Stedman Street

Westlands

A. A. President 4
Class Dance Committee 1, 2, 3, 4
J. V. Basketball 2
Student Council 4
Talent Show 1, 2, 3, 4, First Prize 1, 3, 4
Band and Concerts 2, 3, 4
Junior Red Cross 1, 2, 3, 4
Football 3, 4
Lamplighters 1, 2, 3, President 4
Good Government Day Representative 4

Jerry Cruncher haircut—big guard on the football team—Good Government Day Representative—DeMolay boy—prefers L. H. S. girls—blows trombone in the band—energetic, and good-natured—have his Lamplighting activities prepared him for a future in Visual Aids?



ELAINE ELSIE AVILA

51 Graniteville Road

Chelmsford Center

Class Dance Committee 1, 2, 3
A. A. Member 2, 3, 4
Press Club 3
Talent Night Usher 1, 2
Graduation and Reception Usher 3
Glee Club and Concerts 1, 2, 3, 4
Junior Red Cross 1, 2, 3, 4
Class Ring Committee 3
Class Night Usher 3
Masque and Whig 3

Her homework is the least of her worries—always ready to do the extra jobs at school—couldn't be more carefree—"But, Mr. Nolan, I can't see that."—future Harry Conover model.



BEVERLY LUCILE AXON

52 Stedman Street

Westlands

A. A. Member 1, 2, 3, 4
Class Dance Committee 2, 3, 4
Press Club 4
Talent Show 1, 3
National Honor Society 4
Junior Red Cross 1, 2, 3, 4
Graduation and Reception Usher 3
Masque and Whig 3
Masque and Whig Play Usher 3

"Bev"—always on hand with "ye old chariot"—a willing worker for class and school—loves basketball, both to watch and to play—inexhaustible energy—going to take up "book-larnin'" at L. T. C.



DOROTHY LOUISE AYOTTE

60 Stedman Street

Westlands

Cheerleader 2, 3, 4
Junior Red Cross 1, 2, 3, 4
Masque and Whig 3
Sophomore Dance Committee 2
A. A. Member 1, 2, 3, 4
Talent Show 2
Cheerleader Dance Committee 3

"Dottie"—a dainty little miss—pretty, with a bright smile—who said she was bashful?—prefers the IBM—a live, live wire—Arline's pal—ardent follower of C. H. S. sports—doesn't miss a Lowell High game—on her way to a floral designing school.





BERTHA RITA BEAUBIEN

185 High Street

Chelmsford Center

Junior Red Cross 1

Band 2, 3

A. A. Member 1, 2, 3, 4

Driver Education and Training 3

Glee Club 1

“Bert”—part-time waitress at Jack’s Diner—check that blue Nash—“Taxi anyone?”—C. Y. O. basketball and softball player—“Let’s go to Rocky’s. Huh, kids?”—prefers the Navy—enjoys Period 4 study hall—kids and gets kidded!—will find her niche in the world.



DOROTHY LOUISE BECKER

51 Graniteville Road

Chelmsford Center

Class Treasurer 1

A. A. Member 3, Secretary 4

Graduation and Reception Usher 3

Junior Red Cross 1, 2, 3, 4

Class Dance Committee 1, 2, 3, 4

Student Council, Treasurer 1

Class Ring Committee, Chairman 3

Junior Class Float 3

Band Concert Usher 2

Glee Club 4

Our own Elizabeth Taylor—one track mind (Dave!)—Mr. Healey’s private secretary—displays an adorable coiffure—journeyed to the South for one purpose—following Norma’s footsteps in September—tum, tum-ti-tum - - tum, tum-ti-tum.



CLAIRE BERNADINE BELANGER

28 Adams Street

North Chelmsford

Glee Club 1, 2, 3, 4

A. A. Member 1, 2, 3, 4

Class Dance Committee 1, 2, 3, 4,

Booster Drive 1, 2, 3

Junior Red Cross 1, 3, 4, Secretary 2

Band Concert Usher 1

Cap and Gown Committee, Chairman

Talent Show Usher 1, 2

Graduation and Reception Usher 3

Class Night Usher 3

Favorite vacation spot, Hampton Beach—“Anybody got anything to cat?”—always masticating a substance from the rubber tree—anything but anti-social—full of “wim, wigor, and witality”—will surely go places with her pleasing personality.



ROBERT DOUGLAS BELL, JR.

26 Wright Street

North Chelmsford

Football J. V. 3, Varsity 4

A. A. Member 2, 3, 4

Junior Red Cross 1, 2, 3

Driver Education 4

Heap big football player—lives on borrowed time in father’s Mercury—manages the Hicks quintet—roller skating fanatic—always has something to say—knows all the jokes—happy-go-lucky guy.

NORMAN BISHOP

183 Princeton Street

North Chelmsford

Bowling League 2, 3

Inter-mural Basketball 1, 2, 3, 4

Junior Red Cross 1, 2, 3, 4

“Norm”—one of them thar kids from North—can be depended on to be “sick” the first day of the hunting season—woman hater—late, tardy, dismissed—one of the gas station boys—will good naturedly take what comes.



SEWELL EVERETT BOWERS

15 Church Street

North Chelmsford

Football 4

Baseball 1, 3, 4

J. V. Basketball 2

Band and Concerts 1, 2, 3, 4

A. A. Member 1, 2, 3, 4

Junior Red Cross 1, 2, 3, 4

Dance Committee 2, 3, 4

Talent Show 2, 3

Inter-mural Basketball 2, 3, 4

“Soukie”—mean man with a horn—what a Jiggelow!—Mrs. Carriel doesn’t “dig” his “bebop” compositions—unappreciated “genius” in physics’ class—Mr. Jive with all the trimmings—studies music at night—good luck to a future “platter maestro”.



BARBARA VIRGINIA BOWMAN

16 Washington Street

North Chelmsford

Yearbook Staff 4

Junior Red Cross 1, 2, 3, 4

A. A. Member 1, 2, 3, 4

Press Club 3, 4

Graduation and Reception Usher 3 Band and Glee Club Concert 3

Cap and Gown Committee 4

Talent Show 1, 2

Glee Club 1, 3, 4

Class Dance Committee 2, 3, 4

“Barb”—Mr. Healey’s indispensable shadow—enthusiastic and energetic—eager to give everyone a break—has an interest in L. T. I.—Pat’s friend—drives a maroon “Chevie”—the girl orator in Period 5 P. A. D.—will talk her way to success.



JOSEPH HERBERT BROTZ

46 Smith Street

Westlands

J. V. Baseball 1

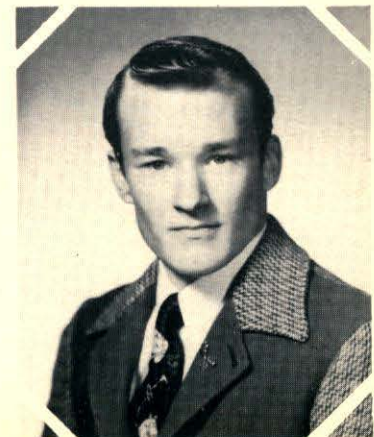
J. V. Basketball 2

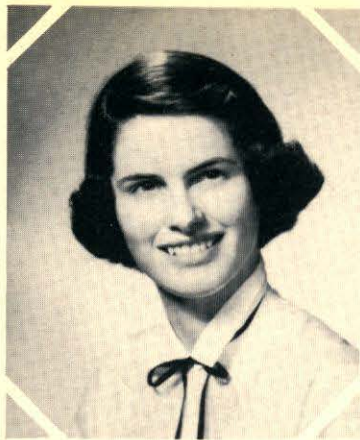
Junior Red Cross 1, 2, 3, 4

A. A. Member 4

Inter-mural Basketball 3, 4

“Joe”—used to be friendly with Billerica boys—drives a hot Studebaker—a voice from way down in his boots—Naval Reserve man—destined to be the shortest admiral in U. S. Navy history.





MARY-LOUISE BURELLE

3 Arbor Road

North Chelmsford

Talent Show 2, 3, 4
Glee Club 3
Driver Training 4
Press Club 4

Junior Red Cross 4
Driver Education 4
A. A. Member 2, 4
Masque and Whig 3

Miss Plunkett of Plunkett's Pink Pills for Pale People—unhurried—dramatic ability—loves to read Dickens, Shakespeare, and the like—willowy but not wispy—detests rubbers—just loves her French book—headed for big things in the future.



ANN MARIE CAFISO

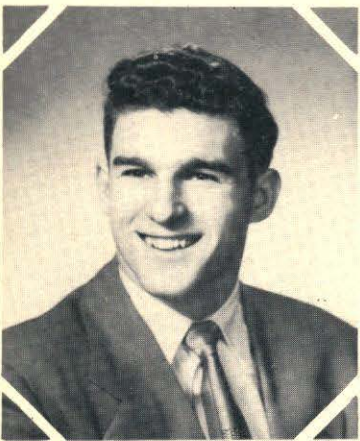
53 Groton Road

North Chelmsford

Junior Red Cross 1, 2, 3, 4
Band and Glee Club Concerts 3, 4
Senior Dance Committee 4

Glee Club 1, 2, 3, 4
A. A. Member 1, 2, 4

A soft-spoken young lady—sings the "Bell-Bottomed Blues" for Bob—"Terry's" shadow—has a regular photograph album in her wallet—ca-ray-zee about P. A. D.—in whatever she does, we wish her well.



HOWARD RUSSELL CARKIN, JR.

51 Swain Road

North Chelmsford

Football 3, 4
Talent Show 2, 3, 4
A. A. Member 3, 4

Lamplighters 1, 2, 3
Baseball 1, 4

"Howie"—fleet-footed halfback—envied for natural curly hair—seen every Friday night at the "Hoodsie"—enjoys teasing girls—Arthur Murray of C. H. S.—loves a good time—dubious on future plans.



IRENE CLAIRE CHENEY

115 Littleton Road

Chelmsford Center

Junior Red Cross 1, 2, Representative 3, 4
Driver Training 4

Driver Education 4
A. A. Member 1, 2, 3, 4

"Rene"—a busy office girl—has shiny new "photo-ident" bracelet—spent her spare time at Christmas in Pollard's—likes to roll the ball down the alley—Jerry's gal—Joanne's chum—future in a department store?

PAUL JOSEPH CHEVALIER

54 Twiss Road

North Chelmsford

Football 2, 3, 4

J. V. Baseball 1

A. A. Member 2, 3, Representative 4

Junior Red Cross 1, 2, 3, 4

Class Dance Committee 2, 3

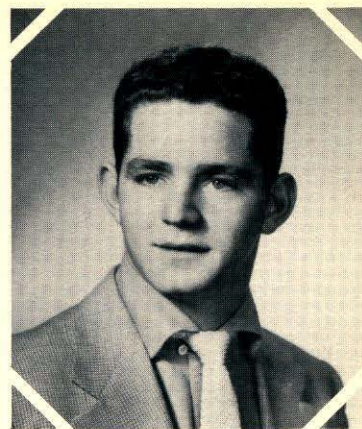
Co-Chairman Class Rings 3

Talent Show, Winner 1

Bowling League 2, 3

Booster Day Float Committee 2

"Cisco"—a gay caballero in spirit and in garb—always present when the fun begins and ready to give it his all—makes up half of one of the corridor couples—indifferently saunters into the future.



DOLORES RITA COLLOPY

1 Marion Street

Chelmsford Center

Yearbook Staff 4

J. V. Basketball 2, 3, Varsity 4

Junior Red Cross 1

A. A. Member 1, 2, 3, 4

Cap and Gown Committee 4

Graduation and Reception Usher 3

Glee Club 1

"DoDo"—Mr. Green's secretary—avid Keith fan—keeps "Bert" buzzing—makes a Homestead threesome, with "Tooty", and "Peggy"—quick-moving basketball forward—alert, well-prepared, and ready for the business world.



MARCIA BURNE COOKE

48 Adams Street

North Chelmsford

A. A. Member 1, 2, 3, Representative 4

Band 1, 2

Glee Club and Concerts 2, 3, 4

Press Club 4

Cheerleader 3

Class Dance Committee 1, 2, 3, 4

Junior Red Cross 1, 3, 4, Representative 2

Booster Drive 2, 3

Graduation and Reception Usher 3

Booster Day Float Committee 3

"Cookie"—the short of it—floored by physics—"Look out! woman at the wheel"—never a bookworm—alternately chews and chatters—neat, sweet and trim—"Mrs. Carriel, I don't think I understand that"—headed for University of Massachusetts.



MARGARET ROSE CURRAN

997 Princeton Blvd.

North Chelmsford

A. A. Member 4

Junior Red Cross 1, 2, 3, 4

Class Dance Committee 4

"Peggy"—radiant smile for everyone—petite and pretty—blushes easily—"dimples"—has a secret admirer—ardent movie fan—well-liked—quiet, shy, and ladylike—capable babysitter—future typist.





ARTHUR EUGENE CUTTER

27 School Street

West Chelmsford

Junior Red Cross 1, 2, 3
Class Dance Committee 3
Football Manager 3
Lamplighters 2, 3

A. A. Member 3
Gymnastic Club 1, 2, 3
Band 1
Driver Education and Training 3

“Art”—short and quiet—a member of the crewcut clan—snug fitting dungarees, hands in hip pockets—forever arguing with Mr. Healey, especially about chickens—an expert gymnast—manages C. H. S.’s football team efficiently—interested in jalopies—a hard worker with a determined goal.



JEAN NANCY DeBARGE

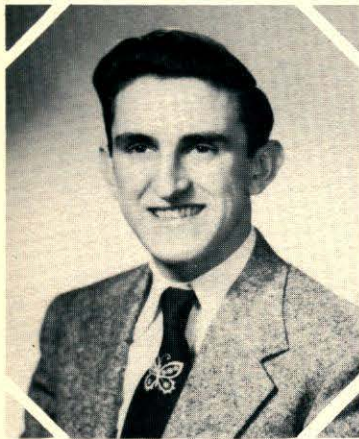
8 Grove Street

Chelmsford Center

Yearbook Staff 4
Lamplighters 3
Junior Red Cross 1, 2, 3, 4
Talent Show 3

Glee Club and Concerts 3
A. A. Member 3, 4
Masque and Whig 3

“Jeanie”—Christian Doctrine Choir member—C. Y. O. booster—“Where’s Jane?”—experienced babysitter—weekly walks to Lowell with Peg—quiet, refined, and reliable—an able artist.



MICHAEL ROBERT DePALMA

24 Wright Street

North Chelmsford

Junior Red Cross 1
Driver Education and Training 3

Bowling League 2, 3

“Smiling Jack”—jet black hair—uncle’s best filling station attendant—“Albie’s” better half—will he be a dull boy, because of all work and no play?—high scorer in bowling league—C. Y. O. baseball—tennis lover—doubtful about future plans.



BASIL DIXON

20 James Street

North Chelmsford

Student Council 3, President 4
Basketball 3, 4
A. A. Member 4
Class Dance Committee 2, 3, 4

Band 2, 3, 4
National Honor Society 3, Vice-President 4
Junior Red Cross 2, 3, 4
Graduation and Reception Usher 3

Miss Hehir’s problem child—gets a big noise from a big trombone—long boy, short temper—often seen sleeping in physics—“Where’s Rhode Island?”—likes trig, hates homework—music and math will always be a part of his life.

SHIRLEY MAE DORSEY

55 Dunstable Road

North Chelmsford

Class Vice-President 1

Student Council Representative 2

A. A. Member 1, 2, 3, 4

Junior Red Cross 1, 2, 3, 4

Graduation and Reception Usher 3 Class Dance Committee 1, 2, 4

National Honor Society 4

Efficient 2nd period office girl—one of the friendship ring, hope chest gang—good things come in small packages—always with Bob—argues frequently in P. A. D.—“Where were you last night? —able seller of cupcakes—happy-go-lucky—Success? Oh Yes!



LOIS AUDREY DUPEE

35 Holt Street

North Chelmsford

Glee Club 1, 2

A. A. Member 1, 2, 3, 4

Junior Red Cross 1, 3, Representative 2, 4 Masque and Whig 3

Driver Education and Training 4

Quiet in classes only—brown hair, almost black—favorite pastime, teasing—faithful to Rainbow—prefers uniformed men—frequent conspiracies with Cindy—definitely movie minded last summer—quiet about the future.



DAVID PERHAM DUTTON

34 Boston Road

Chelmsford Center

Lamplighters 1, 2, 3

Junior Red Cross 4, Representative 1, 2, 3

J. V. Baseball 1

Inter-mural Basketball 2, 3

Class Dance Committee 3, 4

“Dubba”—a brain but you’d never know it—afflicted with absenteeism—popular and cute, but quiet—“Just for chuckles”—Marcia’s man—strums an imaginary guitar with Punchy—drives a hot green “Chevie”—it’s not too far to California.



FRANCES MARY EATON

8 Pine Street

Chelmsford Center

Junior Red Cross 1, 2, 3, 4

Masque and Whig 3

Basketball 3, 4

Field Hockey 3, Co-Captain 4

Open House Usher 3

A. A. Member 1, 2, 3, 4

Band and Glee Club Concerts 3

Glee Club 1, 2, 3, 4

“Tooty”—freckles—blushes easily—a ready smile—DoDo’s pal “Gee! I haven’t the slightest idea!”—“Mr. Hicks, why don’t we just skip these few pages?”—expert on the hockey field—fierce on the basketball court—will make a capable nurse.





JANE FRANCES ELLINWOOD

16 Westford Street

Chelmsford Center

Junior Red Cross 1, 2, 3, 4
Masque and Whig 3

A. A. Member 1, 2, 3, 4
Masque and Whig Play 3

J. V. Varsity Field Hockey 2, 3, Varsity 4
Driver Education and Training 3

Talent Show 3
Open House Usher 3

Keeps the LRY on the move—future match-maker—turns over many new leaves per year—ardent Perry Como fan—field-hockey—an amateur actress—Chelmsford High's "Irma"—Lady-in-White to be.



ELIZABETH ALMA ENIS

26 Evergreen Street

Westlands

A. A. Member 1, 2, 3, 4
Baton Twirler 4

Junior Red Cross 1, 2, 3, 4
Cheerleader 4

"Betty"—cheerful smile, mischievous eyes—always good natured—neat, trim, and well groomed—snappy baton twirler and peppy basketball cheerleader—"But Miss Cordingly !!!"—a Newberry's salesgirl—will hear wedding bells ring out in the near future.



CAROLINA THERESA FERREIRA

15 Marshall Street

East Chelmsford

A. A. Member 1, 2, 3, 4
Graduation and Reception Usher 3
Class Night Usher 3

Glee Club 1
Junior Red Cross 1, 2, 3, 4
Booster Club Drive 1

A mass of coal black hair—wedding bells minded—enthusiastic seamstress—letters to the Army in Korea—a smile for everyone—petite and quiet—hopes to become a typist in the future.



PENNRYN DANA FITTS

41 Littleton Road

Chelmsford Center

A. A. Member 1, 2, 3, 4
J. V. Basketball 1

Basketball 2, 3, 4
Lamplighters 1, 2, 3, 4

"Penny"—has astonishing first name—the littlest fireman—slow, easy, unhurried—star, but "def", on the basketball court—Huckleberry Finn, uh, uh, Fitts—know those freckles anywhere—"The Old Lamplighter" himself.

JOHN JOSEPH FLYNN

156 Dalton Road

Westlands

Yearbook Staff 4
Student Council 2
Junior Red Cross 1, 2, 3, 4
Cap and Gown Committee 4
Talent Show 1

Band and Concert 1, 2, 3, 4
A. A. Member 1, 2, 3, 4
Class Dance Committee 3, 4
Glee Club 4
Inter-mural Basketball 2

Mr. Hahn's left-hand man—born talking—snappy on the comeback—tries to out-blow Phil—"Hey Joe! what's your answer to the physics problem?"—lean and lanky—too nice to be a bachelor, the girls think—upholds standards set by brothers.



SHIRLEY LOUISE GAGNON

379 Acton Road

South Chelmsford

A. A. Member 4
Glee Club 1
Junior Red Cross 1, 2, 3, 4

Driver Education 3
Driver Training 4

"Shirl"—Teen Canteen—basketball player for All Saints—giggles—prefers Air Force—loves to tease—"Hey, what's the answer?"—"Would you please repeat the question, Mr. Nolan?"—adores blue eyes—preparing for the business world.



LOUISE JOAN GALLAGHER

4 Woodlawn Avenue

Westlands

Booster Day Float 3
Cheerleader 2, 3
Glee Club Concert 3, 4
Class Dance Committee 1, 2, 3, 4
A. A. Member 1, 2, 3, Vice-President 4

Talent Show Usher 2
Glee Club 1, 2, 3, 4
Junior Red Cross 1, 2, 3
Masque and Whig 3
Booster Drive 1, 2, 3, 4

Jet black hair—a bit of Ole Killarney—beach bound in the summer—North bound in the winter—a pie girl at Hampton—a Christmas salesgirl at Prince's—extensive wardrobe—drives a blue Nash—sixth period office girl—next year has unlimited opportunities for Louise.



SANDRA JEAN GIBBS

7 Clear Street

Westlands

Yearbook Staff 4
Class Treasurer 2
A. A. Member 4
Masque and Whig Club Play 3
National Honor Society, President 4

Class Marshal 3
Class Dance Committee 3, 4
Driver Education 3
Middlesex Women's Club Award 3
Basketball Manager 4

"Sandy"—the baby of the class—excels without effort—stately and studious—ladylike, likeable, and friendly—willing worker—loves basketball—anxious for her license, but oh, that Driver's Ed.!! —"When I'm at Cornell"—future vet.





THERESA MARIE GOSSELIN

184 Tyngsboro Road

North Chelmsford

A. A. Member 1, 2, 4
Driver Education and Training 3
Band and Glee Club Concert 3, 4

Junior Red Cross, 1, 2, 3, 4
Glee Club 1, 2, 3, 4
Class Dance Committee 4

“Terry”—long natural wavy blonde tresses—a flower at her shoulder, or a bow under her chin, and a crisp blouse—likes to skim around Roller-Way with Ann—a seller of toys—calmly awaits her successes.



VALERIE RITA GRAY

52 School Street

West Chelmsford

Yearbook Staff 4
Cheerleader 2, 3, Captain 4
A. A. Member 1, 2, 3, 4
Masque and Whig Play 3
Glee Club 1, 2
Graduation and Reception Usher 3

Student Council, Secretary 4
National Honor Society 3, 4
Class Dance Committee 1, 2, 3, 4
Junior Red Cross 1, 2
Press Club 3

“Val”—peppy captain of the cheerleaders—loves dancing—enjoys a good, friendly argument even more—as capable as she is clever—as intelligent as she is pretty—one of Kimball’s ice cream girls—will soon be deep in Materia Medica at the Lowell General.



JAMES CHARLES GRESKA

86 Richardson Road

North Chelmsford

A. A. Member 1, 2, 3, 4
Bowling League 2, 3
Lamplighters 1, 2

Junior Red Cross 1, 2, Representative 3, 4
Inter-mural Basketball 1, 2, 3, 4

“Chink”—black curly hair—roars around in father’s big Buick eyes only for Priscilla—“Whitey’s” cohort—concentrates on everything but school—Grasshopper Hill Gang—North’s big game hunter.



RITA MARIE GRONDINE

68 Ledge Road

North Chelmsford

Driver Education 2
Class Dance Committee 4

Driver Training 3
Glee Club 4

Petite and neat—every fold smooth, every hair in place—helps Mr. Green—prefers blue Fords—chauffeurs the other girls to school—“Where’s Terry?”—refined, pleasing and ambitious—will be an asset in any office.

ROBERT ERIC HENDERSON

267 Chelmsford Street

Westlands

Junior Red Cross 1

Lamplighters 1

A. A. Member 4

"Bobby"—Dave's pal—never lingers after school, hurries right back to Westlands—spends most of time working for local florist—forever and always smiling—genial disposition—always willing to help—will succeed.



ROBERT EDWARD HOOD

28 Montview Road

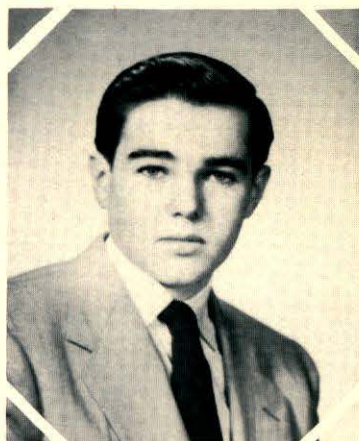
Chelmsford Center

Band 2, 3, 4

Band Concerts 3, 4

A. A. Member 4

"Bob"—tall, dark, and sleepy—ladies' man—lackadaisical—hates work, school, and homework—loves sleep, food, and the Navy—athletically declined—comes alive at night—moves around a lot Period six—future service man.



DORIS MAY JENKINS

5 Park Road

South Chelmsford

A. A. Member 1, 2, 3, 4

Junior Red Cross 1, 2, 3, 4

Masque and Whig 3

Masque and Whig Play Usher 3

Glee Club 1, 4

Class Dance Committee 2

Talent Show 3

"Dorrie"—keeps up friendship with Barbara via mail—always a perfect lady—a flash bulb fan—has many records, wants many more—has a sophomore pal—hopes to pound a typewriter for a busy business man.



CHARLES ELLIS JOHNSON

77 Acton Road

Chelmsford Center

Lamplighters 1

A. A. Member 4

"Charlie"—quiet in school, if nobody is near—never seems to hurry—a Naval reservist—finds interest in the Freshman Class—chums with Joe Brotz—pants tucked in his boots— anxiously awaits "Pomp and Circumstance."





GAIL LOIS JOHNSTON

48 Concord Road

Chelmsford Center

Glee Club 1, 2, 4
Driver Training 4
Junior Red Cross 1, 2, 3, 4

Driver Education 3
A. A. Member 2, 3, 4

Florence's chaperone—sports Al's friendship ring—seen with Barbara at all basketball games—one of those record collectors—loves to dance—doesn't seem to enjoy P. A. D.—plans a trip to New York—future in the Waves.



RICHARD MAXFIELD KENYON

35 Grove Street

Chelmsford Center

Junior Red Cross 1, 2, 3, 4
J. V. Basketball 2

A. A. Member 4

"Dickie"—the boy with a three cornered grin and a mop of curly hair—Punchy's pal—a former peddler of the Lowell Sun—he whistles "Barb" White, "Barb" White—a business man in the making.



ALLARD BERTRAM KLONEL

21 Adams Street

North Celmsford

Band 1, 2, 3, 4
A. A. Member 1, 2, 3, 4
J. V. Basketball 1, 2
Talent Show 1, 3

Band Concert 1, 2, 3, 4
Junior Red Cross 1, 2, 3, 4
Baseball 3, 4
Bowling League 3

"Izzy"—one of Mr. Hahn's 'hot' trumpeters—envied for his trips to Florida—Sewell's pal—versatile and witty—brown wavy hair—fishing enthusiast—future music supervisor.



PATRICIA MARY LaCOURSE

7 Wilson Lane

West Chelmsford

Junior Red Cross 1, 2, 3, 4
Band Concert Usher 2
Cheerleader 3
Graduation and Reception Usher 3
Cheerleader Dance Committee 3

Band 2
Junior Class Float 3
A. A. Member 3, 4
Press Club 3

"Pat"—natural waves, lucky gal—proudly displays her friendship ring—quiet and efficient—continually on the go—usually seen with Dotty—loves to chatter in and out of classes—competent secretary for someone—Good Luck !!!

JOAN HILDA LAJOIE

35 Newfield Street
Glee Club 1
A. A. Member 3

North Chelmsford
Junior Red Cross 1

Quiet, unassuming, and reserved—misses Joan K.—interested in rollerskating and babysitting—refrains from making suggestions—letters to the Army—an Art enthusiast—enjoys 3rd period study—hopes to become a Wave.



LILLIAN LAURA LeBRUN

58 Smith Street

Westlands

Class Dance Committee 1
Junior Red Cross 1, 4, Representative 2, 3
Driver Training 4
Masque and Whig 3

A. A. Member 1, 2, 3, 4
Driver Education 3
J. V. Basketball 3, Varsity 4

“Lil”—5 and 10 girl—“Doesn’t Jimmy look nice?”—likes to talk during period 3—successful basketball and softball player—good pal of Gin’s—“I wasn’t doing anything”—always talking with Joan—somebody’s private secretary.



MARJORIE ANN LESLIE

51 Sherman Street

North Chelmsford

A. A. Member 1, 2, 3, 4
Junior Red Cross 1, 2, 3, 4, Representative 4
Class Dance Committee 4
Glee Club Concert 3

Glee Club 3, 4
Masque and Whig 3
Band 1, 2, 3

“Margie”—Helen’s pal—a smooth brown pageboy coiffure—her homework is not her first thought—Church League basketball? Oh, yes!—her interests are outside of New England, in New York—believe it or not, to be a mortician is one of her desires.



HELEN ANITA LOGAN

15 Gray Street

North Chelmsford

A. A. Member 1, 2, 3, Representative 4
Junior Red Cross 1, 2, 3, 4
Class Ring Committee
Glee Club Operatta

Glee Club 2, 3, 4
Masque and Whig 3
Class Dance Committee 2, 3, 4

“Giggles”—an active Rainbow girl—very soft spoken when boarding the bus mornings—will always be remembered for her famous haircut—argues over who will get Gladys’ cake in the lunch room—her gift of gab will help her find her place in life.





ALBERT JOEL LUPIEN, JR.

240 Westford Street

Chelmsford Center

J. V. Baseball 1, 2, 3

A. A. Member 3, 4

Junior Red Cross 1, 2, 3, 4

"Joe"—deceptively quiet—delightful grin—troubled by trig—one of C. H. S.'s baseball stars—Lyman's buddy—drives a fresh air taxi, his jeep—no interest in girls—an ardent apple farmer—ever ready, willing, and able.



DONNA MARGARET MacKENZIE

6 Frank Street

North Chelmsford

Junior Red Cross 1, 2, 3, Representative 4

Masque and Whig 3

Driver Education and Training 4

Science Club 4

Press Club 4

A. A. Member 3, 4

"Cindy"—smart little red-head—collects freckles—adores "der Bingle" and sons—thinks the sun shines brighter in Derry, N. H.—doesn't always agree with Mary-Lou—patron of Napoli's—cooks the most "devoon" fried chicken—another applicant to Massachusetts General.



CAROL ANN McGOVERN

85 Tyngsboro Road

North Chelmsford

Glee Club and Concert 1, 2, 3, 4

Band 2

Press Club 4

Booster Day Float Chairman 3

Sophomore Polly Teena Representative 2

Masque and Whig 3

Class Dance Committee 3, 4

Junior Red Cross 1, 2, 3, 4

Glee Club Operetta 2

A. A. Member 1, 2, 3, 4

Always willing to work—if you know her, you like her—one of the North gang—finally got her steam hair cut—cheerful outlook—has a definite flair for merchandising—is bound to succeed in everything she does.



CHARLES DICKENSON MARKS

29 High Street

Chelmsford Center

A. A. Member 4

Masque and Whig 3

Booster Captain 3, 4

Science Club 4

Junior Red Cross 4

Driver Training and Education 4

Press Club 4

Lamplighters 4

Halloween Dance Committee 4

"Charlie"—constantly teased—master of the Teen Canteen—easily shocked—a mania for argyle socks—the best English accent this side of London—an innocent look, but there's more to it—will he be the Reverend Charles?

GENEVIEVE GRACE MELLO

26 Stedman Street

Westlands

A. A. Member 3, 4

Junior Red Cross 1, 2, 3, 4

Class Night Usher 3

Class Dance Committee 2, 3, 4

Driver Education and Training 3

Glee Club 4

"Gen"—pretty blonde hair—Bev's hot rod companion—YWCA star basketball player?—one of the Driver Training clan—"Mr. Dunigan, pick a tree!"—Bob's girl—wants to go to New York—an artist of tomorrow.



CAROL MARGARET MERRYMAN

66 Linwood Street

Westlands

Yearbook Staff 4

Junior Red Cross 2, 3, 4

A. A. Member 2, 3, 4,

National Honor Society 3, 4

Press Club 4, President 4

Graduation and Reception Usher 3

Class Motto Committee 4

Movie enthusiast—"Did you study for the test? What did you think of it?"—summers on the Cape—loyal to her homework—record collector—absence slips, notices, and rush orders in the Business Department—will keep someone's office working efficiently.



ARLINE FAY MILLER

29 Linwood Street

Westlands

A. A. Member 1, 2, 3, 4

Junior Red Cross 1, 2, 3, 4

Baton Twirler 1

Softball 1

Band Concert Usher 1

"Candy"—Dottie's pal—Whitey's one and only—happy-go-lucky—"Anybody got any gum?"—always alibis—"Has anyone seen my shorthand homework?"—works with a will at anything which interests her—part-time typist, just waiting to be full-time.



PAUL ELLIOT MOODY

7 Watt Terrace

Westlands

Junior Red Cross 2, 3, 4

Class Dance Committee 3, 4

Driver Education 4

A. A. Member 3, 4

Varsity Basketball 3

Basketball, Manager 4

Six foot five, dig that guy—specializes in fancy high-heeled boots—cracks corny jokes—ducks as he goes through any doorway—"But Miss Scoboria, that *can't* be right!!!"—connoisseur of Foo-Foo Dust—"I goofed"—able basketball manager—success foretold.





GLADYS MARY MOORE

15 Holt Street North Chelmsford
 Student Council Member 4 A. A. Member 1, 2, 3, 4
 Glee Club 1, 2, 3, 4 Glee Club Concert 3, 4
 May Queen Attendant 1 Press Club 4
 Dramatic Club 3 Class Dance Committee 3, 4
 Junior Red Cross Member 1, 2, 3, 4

"But Mr. Hicks, I don't want to be an engineer!"—mad basketball player at the "Y"—constantly fighting with Lyman in physics—ardent French student(?)—public menace on the highway—a Cape Cod fan—full of fun and pep, but college minded.



RUTH CAROLINE MORETON

16 Woodbine Street Westlands
 Softball 3 Driver Education 3
 Lamplighters Treasurer 4 Science Club 4
 A. A. Member 1, 4

Sincere and unassuming—skiing enthusiast—able artist—seen chauffeuring in a blue Mercury—Nancy's pal—a "Y" league guard—proud big sister—eager to be another Florence Nightingale.



ALBERT EDWIN NARUS

35 Richardson Road North Chelmsford
 A. A. Member 3 Bowling League 2, 3
 Football 2, 3 J. V. Baseball 2, 3
 Junior Red Cross 1, 2, 3, 4

"Albie"—loves midget racers—strictly the bachelor type—"Albie's" Hot Rod—seen but not often heard—ardent Red Sox fan—my big-brother in Connecticut—contacts in big league baseball—he will just wait for the future to come to him.



PATRICIA ANN NORWOOD

52 Warren Avenue Chelmsford Center
 Yearbook Staff 4 Junior Red Cross 2, 3, 4
 National Honor Society 3, 4 A. A. Member 2, 3, 4
 Class Dance Committee 3, 4 Field Hockey 3, Co-Captain 4
 Graduation and Reception Usher 3 Press Club 4
 Cheerleader 4 Baton Twirler 4

"Pat"—capable field hockey co-captain—drives the Warren Avenue Taxi—still has her accent—talkative, versatile, and capable—Rhode Island's gift to C. H. S.—a "Y" basketball player—aspires to wear a Massachusetts General cap.

JAMES FRANCIS O'NEIL

8 Clancy Street

East Chelmsford

Baseball Manager 2

J. V. Baseball 3

A. A. Member 1, 2, 3, 4

Junior Red Cross 1, 2, 3, 4

Inter-mural Basketball 3, 4

"Jimmy"—friend of "Dapper"—center fielder in baseball—dreamer in Period 2 study hall—usher at the movies—possessor of a shoe brush haircut—another star from the East.



VIRGINIA ELEANOR PAJAK

8 Maple Avenue

Westlands

A. A. Member 3, 4

Class Night Usher 3

Driver Education 3

Driver Training 4

Glee Club 4

Junior Red Cross 1, 2, 3, 4

"Gin"—Ben Franklin's pride and joy—"Where's Gen?"—wonderful pal—Pete's girl—"What are we going to do tonight?"—always laughing—does homework period 5—able worker—success in the business world.



JOHN THOMAS PAYNE

17 Plum Street

Chelmsford Center

Class Vice-President 2

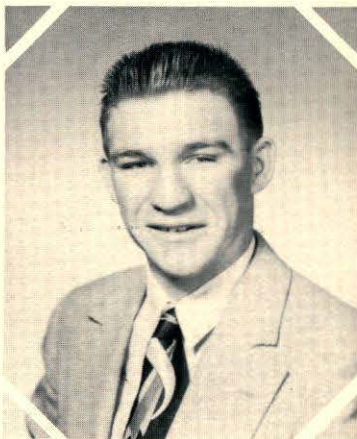
Football 4

Baseball 2, 3, 4

Basketball 3, 4

A. A. Member 2, 3, 4

"Punchy"—able basketball captain—Dave's sidekick—somewhat girl conscious—three-letter-man—former Silver Mittens fighter—holds a Sears and Roebuck license—prefers talking to himself—future 3rd baseman for the Red Sox.



GEORGE JOHN PERZEL, JR.

167 North Road

Chelmsford Center

Junior Red Cross 1, 2, 3, 4

Band 1, 2, 3, 4

Class Dance Committee 2, 3, 4

Bowling League 3

A. A. Member 1, 2, 3, 4

Lamplighters 1

Ye old mountain climber—man with a horn, trombone that is—loves bright sweaters and jackets—makes excellent ceramics—takes a lot of teasing good naturedly—jazz fan—expert pianist.





LYMAN EDWARD PEVEY, JR.

185 Westford Street

Chelmsford Center

Baseball, J. V. 1, Varsity 2, 3, Co-Captain 4 Student Council 3
National Honor Society 3, Treasurer 4 A. A. Member 2, 3, 4
Boys' State Representative 3 Junior Red Cross 3, 4
Cap and Gown Committee 4 Class Motto Committee 4

Physics whiz—catches everyone's eye in a big blue Buick convertible—"Remember that now"—one of our skyscrapers—star first baseman and co-captain—enjoys constant arguments with a certain blonde—headed for Lowell Tech.



J. ARTHUR POITRAS

3 Wildwood Street

Westlands

Band 2, 3, 4 A. A. Member 4
Senior Dance Committee 4 Junior Red Cross 1, 2, 3, 4
Glee Club 4

J. Arthur—began with '41 Ford, now has '50—Rita's man—roller skating fan—hardworker—serious minded—very dependable—one of the hockey fiends—plans to take over father's business.



JUDITH REED POLAND

4 Bridge Street

Chelmsford Center

Yearbook Staff 4 Band 1, 2, 3, 4
Softball 2, 3, 4 Basketball 4
Press Club 4 National Honor Society 3, 4
A. A. Member 1, 2, 3, 4 Graduation and Reception Usher 3
Student Council 1, Secretary 2, V. P. 3, Assembly Chairman 4
D. A. R. Representative 4 Dramatic Club Play 3
Massachusetts Student Council, Secretary 4

"Judy"—our public relations gal—ready smile, long wavy hair, and winning manner—her activities range from selling hot dogs to representing us at the D. A. R. and at the State Student Council—we predict she'll be a winner in her chosen field of nursing.



FRANKLIN JOSEPH PRESCOTT

121 Riverneck Road

East Chelmsford

Band 1, 2, 3, 4 Glee Club 1, 2, 3, 4
Junior Red Cross 1, 2, 3, 4 Football 1, 3, 4
J. V. Baseball 3 A. A. Member 4
Cap and Gown Committee 4

Good natured, happy-go-lucky, a twinkle in his eye, that's Dapper—prevents any class from being dull—burns little midnight oil—football fixture—has kept the band out of time for four years—however, will keep in time with whatever he undertakes.

FLORENCE ADELE RAYMOND

21 Ripley Street

North Chelmsford

Junior Red Cross 1, 2, 3, 4

A. A. Member 1, 2

Driver Education 4

Glee Club 1, 2

"Flo"—was an invalid for a long time—giggles with Gail, Shirley, and Joan—never a dull moment—"Where will I get enough money for the trip to New York?"—patronizes the Plaza—a future Wave.



PATRICIA ANN RIOUX

38 Princeton Boulevard

North Chelmsford

A. A. Member 1, 2, 3, 4

Junior Red Cross 1, 2, 3, 4

Glee Club 1, 3, 4

Glee Club and Band Concert 3

Class Dance Committee 1, 3, 4

Booster Day Float 3

Neat, sweet, and petite—has a wardrobe to be remembered, especially that teal dress—spends many hours writing to one of Uncle Sam's men—Mr. LeBlanc's star pupil—will always be remembered for her song and dance routine, "By the Sea"—a receptionist, a technician,—which?



RONALD KEITH ROACH

150 Tyngsboro Road

North Chelmsford

A. A. Member 1, 2, 3, 4

Band Member 1, 2, 3, 4

Junior Red Cross 1, 2, 3, 4

Band Concert 1

"Ronny"—one of the band's red-hot drummers—an unparalleled disposition—generally quite quiet—doesn't hesitate to enjoy himself, though—always has a warm smile—broad shoulders—known and respected by all—will he rival Gene Krupa?



FRANK EDSON ROBERTSON

Willis Drive

North Chelmsford

Press Club 3, 4

Junior Red Cross 1, 2, 3

Science Club 4

Lamplighters 4

Driver Education 3, 4

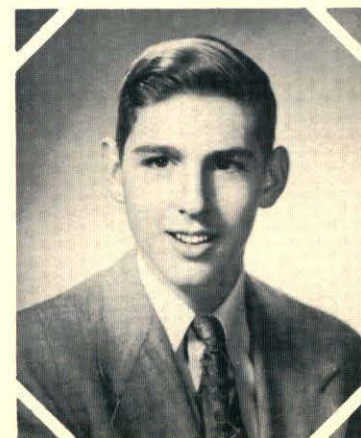
Graduation and Reception Usher 3

Talent Show 1

Masque and Whig Play 3

Refreshment Stand 1, 2, 3, 4

Always has a smile—Driver Training grad—played "Oogie" in dramatic club play—can be seen at every dance—modern day Daniel Boone—interested in math and science—plans to enter Lowell Tech in the fall.





PHILIP MICHAEL ST. GERMAIN

34 Pine Hill Road

Chelmsford Center

Yearbook Staff 4

Vice-President 3

Student Council 4

Band Concert 1, 2, 3, 4

Class Dance Committee 1, 2, 3, 4

Ring Committee 3

Graduation and Reception Usher 3

"Phil"—sports a two-tone station wagon—the egg and I—would go anywhere to skate—the man with the clarinet—ready smile—an ardent hockey fan—faithful C. H. S. basketball rooter—a guy with a heavy foot—a future farmer of America.



ELSIE MARIE SCHOLZ

11 Columbia Street

North Chelmsford

National Honor Society 3, 4

Driver Education 4

A. A. Member 2, 3, 4

Driver Training 4

Graduation and Reception Usher 3

Science Club 4

Startling vocabulary—devoted to her family—shudders at the mention of physics—likes to debate with teachers—slave of the Giant Store—excels in English—has a bubbling manner—hopes to train at the Massachusetts General Hospital.



BEVERLY JEAN SNOOK

172 Proctor Road

South Chelmsford

Junior Red Cross 1, 2, 3, 4

Glee Club 4

"Bev"—"Judy's" pal—patronizes the Rollaway—pretty blue eyes—oh! that laugh—one of South Chelmsford's contributions to Chelmsford High School—loves to talk, especially in P. A. D.—dislikes gym—helps out the nylon blouse manufacturers—one of the business world gals.



WARREN CLEMENTS SULLY

65 Mill Road

Chelmsford Center

Driver Education 3

Science Club 4

Gymnastic Club 4

"Sul" or the late Mr. Sully—co-operative, willing and ready to attempt an answer—presented a Lowellite with a friendship ring—always mumbling in P. A. D.—one of the gang from the Center—hopes to make a success as a florist.

SHIRLEY ELAINE SUTHERLAND

87 Gorham Street

East Chelmsford

Junior Red Cross 1, 2, 3, Treasurer 4

A. A. Member 1, 2, 4

Field Hockey 3, 4

Graduation and Reception Usher 3

Science Club 4

National Honor Society 4

Proud of her ring from Ted—planning a trip to New York with Flo and Gail—looks quiet, but isn't—likes movies and roller skating, but prefers the "Hoodsie"—conscientious about her studies—"Oh no!"—to be a nurse is her desire.



THEODORE ERNEST TETREAULT

22 Second Street

Chelmsford Center

J. V. Baseball 1

Band and Concerts 1, 2, 3, 4

A. A. Member 3, 4

Class Dance Committee 3

Junior Red Cross 2, 3, 4

"Ted"—able companion—"Now look here, handsome"—wanders often to Wilmington—Teen Canteen disc jockey—the good old "Ford" just wouldn't start!!—one of the three boys in Period 3 English—one of our future business men.



BARBARA HELEN THIFFAULT

206 Boston Road

Chelmsford Center

Glee Club 1

Driver Education 3

Driver Training 4

Junior Red Cross 1, 2, 3, 4

A. A. Member 1, 2, 3, 4

"Babs"—wears a friendship ring—rides around in a '51 Pontiac—"Mr. Dunigan, I can't do that!"—reliable—"Who's Phil!!"—a rooter for South Row—proud of her driver's license—excels in bookkeeping.



BARBARA JOAN VENNARD

48 Washington Street

North Chelmsford

Glee Club 1, 2, 3, 4

Junior Red Cross 1, 2, 3, 4

A. A. Member 1, 2, 3, 4

Baton Twirler 4

Class Dance Committee 1, 2, 3, 4

Band Concert 3

Baton Twirlers and Cheerleaders Dance Committee 4

Talent Show 2

"Joanie"—basketball at the "Y"—letters to an admirer—never on time—carefree manner—sings with her sister Betty—able cup packer—full of fun—the last of the Vennards.





JUDITH LOUISE WALKER

225 Groton Road North Chelmsford
 Yearbook Staff 4 Junior Red Cross 1, 3, 4, Representative 2
 A. A. Member 2, 3, 4 Baton Twirler 1, 2, 3
 Junior Float Committee Glee Club 1
 Talent show 2, Usher 1 Graduation and Reception Usher 3
 Band Concert Usher 1, 2 Baton Twirler's Dance Committee 3
 National Honor Society 4

"Judy"—Dottie's pal—prefers redheads—possesses a friendship ring—busy A period office girl—always on Ripley Street—efficiency, plus—letters to the Air Force—bowling enthusiast—an asset to any office.



JACQUELINE CLAIRE WESTWOOD

25 Princeton Boulevard North Chelmsford
 Junior Red Cross 1, Secretary 2, 3, 4 Baton Twirler 2, 3, 4
 A. A. Member 1, 2, Representative 3, 4 Band Concert 3
 Class Dance Committee 1, 2, 3, 4 Band Concert Usher 1, 2
 Junior Class Float 3 Press Club 4
 Glee Club 1, 2, 3, 4

Luscious blue eyes—soft blonde hair—awaits the arrival of a certain marine—a snappy majorette—finds life interesting, and makes it more so—never spends a dull moment—off to Fisher in September, then???



MARCIA ETHEL WHITE

1 Allen Street Westlands
 Yearbook Staff 4 Junior Red Cross 2, 3, Representative 1, 4
 A. A. Member, Representative 2, 3, 4 Glee Club 1, 4
 Talent Show 2, 3, Usher 1, 2, 3 Graduation and Reception Usher 3
 Cheerleader 3, 4 Student Council 2, 3
 Class Dance Committee 1, 2, 3, 4 Press Club 3

Dark brown eyes and blonde hair—energetic cheerleader—California bound—usually escorted by Dave—loves to sew and draw—carefully chosen wardrobe—a church basketballer—cheerful salesgirl—future in art.



NANCY PRESCOTT WRIGHT

22 Riverneck Road East Chelmsford
 A. A. Member 1, 2, 3, 4 National Honor Society 3, 4
 Graduation and Reception Usher 3 Science Club 4
 Driver Education and Training 3, 4 Junior Red Cross 4
 Lamplighter's Club, Secretary 4 Field Hockey 3, 4
 Softball 3 Basketball 4, J. V. 2, 3

Shirley's pal—an alert and inquiring mind—quiet and reserved—loyal to East—a two-letter girl, field hockey and basketball—Lamplighter's secretary—will be an efficient nurse.

Honors

Class of 1954

GRADUATION SPEAKERS

Sandra Jeanne Gibbs

Nancy Prescott Wright

Carol Margaret Merryman

Valerie Rita Gray

Patricia Ann Norwood

Judith Reed Poland



HONORS

Elsie Marie Scholz

Lyman Edward Pevey, Jr.

Dorothy Jane Welch

Shirley Mae Dorsey

Shirley Elaine Sutherland

Basil Dixon

Beverly Lucile Axon

Judith Louise Walker

Special Awards

Class of 1953

The following is a list of special awards presented at the graduation exercises, June 12, 1953. Inasmuch as these awards were not made until the night of graduation, it was impossible to record them in the 1953 Yearbook.

THE HARVARD CLUB BOOK PRIZE — Presented by the Harvard Club of Boston to the best all around boy who stands high in scholarship and character in the college course of the Junior Class — "The Big Change" — by Frederick Lewis Allen, awarded to **LYMAN EDWARD PEVEY**.

GOOD CITIZENSHIP CERTIFICATE — Presented by the Daughters of the American Revolution for outstanding qualities of dependability, leadership, service and patriotism—awarded to **ELEANOR GENE GRAY** who was selected by her classmates and teachers.

READER'S DIGEST — A complimentary subscription to the Reader's Digest for one year to the Valedictorian of the Class of 1953 — **PHILIP ALVIN SILK**.

BAUSCH AND LOMB HONORARY SCIENCE AWARD — Given by the Bausch and Lomb Optical Co. for outstanding accomplishment in the study of scientific subjects—awarded to **JUDE THADDEUS FLYNN**.

ENGLISH PRIZE — A medal given by the North Chelmsford Parent Teachers Association for excellence in the study of English as determined by competitive examination—awarded to **CAROL LOUISE NICKERSON**.

DUNIGAN AWARD — Given by the Chelmsford Teachers Association in loving memory of Hilda B. Dunigan, who taught in Chelmsford High School, from 1928 to 1934, for excellence in shorthand and typewriting as determined by competitive examination, won by **CHARLOTTE ADELE McLAUGHLIN**.

GAY AWARD — Given by the Chelmsford Teachers Association in loving memory of Dorothy F. Gay, who taught in Chelmsford High School, from 1932 to 1934, for excellence in French as determined by competitive examination, won by **CAROL LOUISE NICKERSON**.

FOGG AWARD — Given by the Chelmsford Teachers Association in loving memory of Donald H. Fogg, who taught in Chelmsford High School, from 1940 to 1943, to the highest ranking senior girl who has earned a letter in major sports, won by **CAROL LOUISE NICKERSON**.

KNIGHTLY AWARD — Given by the Chelmsford Teachers Association in loving memory of George R. Knightly, who was a teacher and coach in Chelmsford High School, from 1930 to 1943, to the highest ranking senior boy who has earned a letter in major sports, won by **PHILIP ALVIN SILK**.

LARKIN AWARD — Given by Chelmsford Teachers Association in loving memory of Bernard P. Larkin, who was the band teacher in Chelmsford from 1943 to 1952, to the senior who has contributed the most to the music department in time and effort, won by **RICHARD STANLEY PIKE**.

HOYLE MEMORIAL AWARD — Given by the Chelmsford Booster Club in loving memory of Frank Hoyle, who was the President and organizer of the Boosters Club from 1951 to 1953, and awarded to the senior who has contributed the greatest service to the school during two or more years in high school, won by **WINCHESTER EVERETT DERMODY, III**.

UNITED STATES HISTORY PRIZE — a medal presented by the American Legion Post No. 213, of Chelmsford Center, for excellency in United States History — awarded to **JOSEPH EDWARD GEARY, JR.**

JOURNALISTIC SCHOLARSHIP — Given by the Chelmsford Newsweekly as determined by competition in recognition of ability to write on and unannounced subject. The amount of this scholarship is \$50 with an additional \$50 if the winner is enrolled in college as a major in Journalism, won by **CAROL LOUISE NICKERSON**.

BOOSTER CLUB SCHOLARSHIPS — Given by the Chelmsford Boosters Club to aid in the furtherance of the education of a senior boy and girl. These are \$100 scholarships for which pupils must apply. The selections are made from the applicants by a committee of Boosters and teachers, won by **ELEANOR GENE GRAY** and **ROY JOHN ZABIEREK**.

UNDERGRADUATES





Junior Class



President — Thomas Gallagher

Vice-President — Roland Thayer

Secretary — Patricia Sorbo

Treasurer — Harvey Miller

Faculty Advisers — Marjorie B. Scoboria, John J. Dunigan

Abrahamson, Carole
 Adams, Agnes
 Armitage, Robert
 Bell, Beverly
 Bill, Raymond
 Blackadar, David
 Blaisdell, Mary
 Bomil, Judith
 Bovill, Thomas
 Brooks, Doris
 Burt, Richard
 Caron, Donald
 Connor, Margaret
 Cross, Nancy
 Doyle, Kathleen
 Draycott, William
 Elliott, Patricia
 Farrow, Franklin

Fisher, Judith
 Fogg, Donald
 French, Carol
 Gill, Judith
 Gould, William
 Gravelle, Joseph
 Greska, Gerald
 Guilmette, Earl
 Gunther, Edrene
 Hall, Wilfred
 Harper, Carole
 Harrington, Eileen
 Hoyle, Randall
 Johnson, Eric
 Kelley, Arlene
 Kukulski, Elaine
 LaCourse, Bernard
 LaHaise, Marie

Leedberg, Lennart
 Leslie, Nancy
 Litchfield, Lawrence
 Long, Gertrude
 Luke, Wendell
 McEvoy, Robert
 McLenna, Helen
 Merrill, Joanne
 Morrison, Elizabeth
 Mosely, Frederick
 Mueller, Anita
 Norton, Charles
 Paduch, Gloria
 Parks, Hazel
 Payton, Philip
 Peterson, Paul
 Pouliot, Prunella
 Prescott, William

Provencal, Dona
 Pushee, George
 Reid, David
 Russell, Robert
 Santamour, Edgar
 Selfridge, Newton
 Simpson, Carole
 Slater, Janet
 Smith, Gertrude
 Tassios, Dorothy
 Vaillancourt, Elaine
 Vaipan, Patricia
 Valorose, Nancy
 Vennard, William
 Vickery, William
 Wainwright, Nancy
 Wetmore, Robert

Sophomore Class



President — Omer Desmarais

Vice-President — Eileen Cummings

Secretary — Joanne Geary

Treasurer — Lawrence Miller

Faculty Advisers — Helen R. Poland, Murray B. Hicks

Ahearn, Mary
 Auger, Roger
 Baril, Donald
 Baron, John
 Barry, Robert
 Bellwood, Gail
 Bowers, Barbara
 Boyd, Joseph
 Brodeur, Richard
 Brown, Robert
 Bujnowski, Richard
 Card, Norman
 Carkin, Robert
 Caron, Gregory
 Chambers, Glen
 Chandilla, Cynthia
 Clark, Robert
 Coddaira, Philip
 Corey, Phyllis
 Crowe, Ann
 Curran, James
 Cutrumbes, John
 DePalma, John
 Devno, Richard
 Dichard, Dianna
 Dodge, Joan

Doole, John
 Doyle, Roland
 Dufresne, Joseph
 Egerton, Elizabeth
 Gagnon, Nancy
 Gaudette, Paul
 Gibbons, Rosemary
 Gilet, Eugene
 Goldman, Allan
 Gould, Shirley
 Grenier, Diane
 Guilmette, Russell
 Hicks, Murray, Jr.
 Hicks, Richard
 Howard, Barbarann
 Hoyt, Priscilla
 Hopkinson, Richard
 Kelly, William
 Kolesnikoff, Wayne
 Kydd, Malcolm
 Lamprey, Robert
 Landock, Walter
 Lane, Douglas
 Lee, William
 Leedberg, Elaine

Lewis, Mary
 Logan, John
 Lupien, Lois
 MacDonald, David
 Marchand, Raymond
 Martin, John
 McCarthy, Mary
 McGaughey, Priscilla
 McGillivray, Donald
 Medin, Nancy
 Monette, Charles
 Molleur, Philip
 Moreton, George
 Morrell, Beverly
 Morrissey, John
 Morse, Caroline
 Mowll, Lawry
 Nickles, William
 Noel, Romeo
 O'Neil, Richard
 Parks, Grace
 Pearson, David
 Perko, Lillian
 Perzel, Edward
 Philbrook, Judith

Pihl, Frederick
 Reedy, John
 Reid, Joan
 Reynolds, Judith
 Robertson, Hazel
 Russell, Gail
 Scully, Maureen
 Simpson, Kay
 Slipp, Judith
 Snook, Frank
 St. Germain, Thomas
 Supple, Richard
 Tandus, Paul
 Tareila, Margo
 Taylor, Ronald
 Vaipan, Marilyn
 Vinal, Ruth
 Vrouhas, Dorothy
 Waitt, Ruth
 Walker, Daniel
 Weeks, David
 White, Barbara
 Williams, Rheta
 Witts, John
 Wood, Floyd
 Wyman, Annette

Freshman Class



President — George House

Vice-President — Ronald Kilburn

Secretary — Katherine Morrow

Treasurer — Carolyn Smith

Faculty Advisers — Charlotte S. Carriel, Lawrence P. Healey

Aubrey, Francis
 Bacon, Joan
 Baril, Jacqueline
 Bell, Elizabeth
 Bell, Janet
 Bennett, Robert
 Bissonnette, Beverly
 Boumil, Elizabeth
 Brodley, Bruce
 Brooks, Laureen
 Brooks, Mary
 Brotz, William
 Brow, Ellen
 Brown, Harry
 Bujnowski, Joan
 Castellano, Marie
 Carty, Doris
 Charest, Lorraine
 Churchill, Avis
 Connors, Thomas
 Corfield, David
 Courchaine, Katherine
 Crowley, Lila
 Curran, Maureen
 Cutter, Patricia
 Davidson, Allan
 DeFreitas, Richard
 DeSilvio, Carol

Dirubbo, Joyce
 Doyle, Richard
 Eno, Lorraine
 Fall, Brenda
 Flavell, John
 Gonsalves, John
 Gosselin, James
 Gray, Lillian
 Grondine, Constance
 Hadley, Eleanor
 Harrington, James
 Hart, Edward
 Hartley, Marilyn
 Hayes, Helen
 Hicks, Marilyn
 Howell, Carolyn
 Hulick, Patricia
 Ingalls, Robert
 Jason, Joanne
 Johnson, Raymond
 Jones, Alberta
 Keddie, Geraldine
 Kemp, Kenneth
 Keppel, David
 Kimball, Harry
 Kimball, John
 Kimball, Ralph

Kroll, Judith
 Kulski, Kathleen
 Kydd, Marilyn
 Leslie, Carole
 Lewis, Richard
 Lind, David
 Lombard, Janet
 Lorrain, Cecelia
 Lund, Winthrop
 MacKenzie, Jessamine
 MacLeod, John
 Marks, Donna
 McIntire, Paul
 McQuade, Mary
 Moreton, Dorothy
 Nickerson, Ralph
 Nickles, Bradley
 O'Sullivan, Francine
 Perko, Alice
 Pettee, Charles
 Popplewell, Helen
 Prescott, Robert
 Provencal, Arthur
 Quintin, Shirley
 Radcliffe, Mary
 Ragusa, Eleanor
 Raymond, Joyce

Ricciardi, Sandra
 Ricker, Marcia
 Roberts, Marjorie
 Robinson, Gerald
 Roymans, Kristin
 Scaplen, Albert
 Sehlstedt, Ann Marie
 Simpson, Elizabeth
 Smith, Theresa
 Spurr, Richard
 Sullivan, Barbara
 Sutherland, David
 Sweeney, Donald
 Thibeault, Doris
 Thomas, Kathryn
 Thompson, Patricia
 Touseignant, Alice
 Vaccari, Edna
 Vincombe, Brenda
 Vrouhas, Spiro
 Warner, Leonard
 Watt, Claire
 Westwood, Patricia
 Whalen, Ann
 Williams, William
 Wilson, Janet
 Witts, Sandra
 Zaharoolis, George

LEST WE FORGET . . .



"Here's our principal, J. T. C.
His snappy office girls are we."



"Anyone for an Oat?"



"Oh ho! for the Rio Grande."



"The Neck's Best Thing."



"What! No Garters?"



"From top to toe, we make a show."



"Sweater Boys."

. . . THE STYLES WE SET



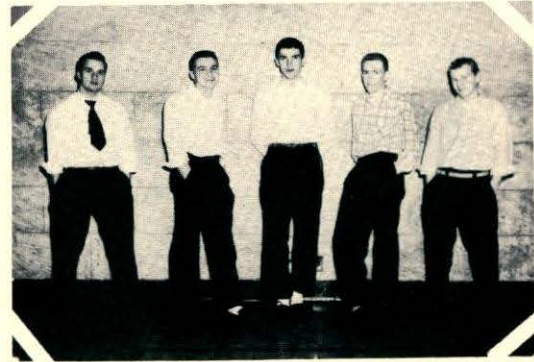
"The Dapper Dans."



"What goes? A shopping trip?"



"Variety is the Spice of Life."



"Some wore it short,
Some wore it long."



"Let it snow, let it snow, let it snow."



"The spirit of Gloucester."



"That Little Boy Look."

The Athletic Association



President Kurt Anderson
 1st Vice-President Wilfred Hall
 2nd Vice-President Louise Gallagher
 Secretary Dorothy Becker
 Treasurer Richard Hicks
 Faculty Manager Lawrence P. Healy

Chelmsford High School like all public secondary high schools, has an athletic program designed to train its students to work in teams and to know and appreciate the value of good sportsmanship. As it is the desire of most American boys and girls to either participate in or be a spectator at sports, our school provides a sports agenda which consists of basketball, baseball, football, and field hockey both interscholastic and intermural, and thus gives ample opportunity for student activity of the type to suit the individual need: Chelmsford High School Athletic Association has complete control of these activities under the able guidance of Mr. Lawrence P. Healey.

HOMEROOM REPRESENTATIVES

Paul Chevalier	Elaine Leedberg	Thomas St. Germain
Marcia Cooke	Nancy Leslie	Janet Slater
Lila Crowley	Helen Logan	Donald Sweeney
Joan Dodge	Margaret Matseas	Theodore Tetreault
John Doole	Thomas Payne	Marilyn Vaipan
Russell Guilmette	Paul Peterson	Jacqueline Westwood
George House	William Prescott	John Witts
Randall Hoyle	Joan Reid	Sandra Witts



Athletic Awards

BASEBALL (1953)

Dean Haeusler, Co-Captain
Bernard McGlinchey, Co-Captain
Warren Bill
Sewell Bowers
Frederick Crowe
Winchester Dermody
Omer Desmarais
Franklin Farrow
Thomas Gallagher
Wilfred Hall
Murray Hicks
Albert Lupien
Joseph Marcotte
Thomas Payne
Lyman Pevey
Philip Silk
Allard Klonel, Manager

FOOTBALL

Joseph Marcotte, Captain
Kurt Anderson
Robert Bell
Sewell Bowers
Howard Carkin
Omer Desmarais
Franklin Farrow
Thomas Gallagher
Wilfred Hall
Gerald Hardy
Murray Hicks
Richard Hicks
Randall Hoyle
Wendell Luke
Harvey Miller
Lawrence Miller
Philip Molleur
Edward Perzel
Franklin Prescott
William Prescott
Leonard Warner
Arthur Cutter, Manager
Edward Hart, Manager
John Morrissey, Manager
Daniel Pushee, Manager

FIELD HOCKEY

Frances Eaton, Co-Captain
Patricia Norwood, Co-Captain
Beverly Bell
Judith Bomil
Nancy Cross
Jane Ellinwood
Eileen Harrington
Priscilla Harris
Carole Harper
Alberta Jones
Mary McCarthy
Beverly Morrell
Gloria Paduch
Maureen Scully
Shirley Sutherland
Nancy Wright
Ann Crowe, Manager

BASKETBALL (BOYS)

Thomas Payne, Captain
Omer Desmarais
Basil Dixon

BASKETBALL (BOYS)—Cont.

Pennryn Fitts
Thomas Gallagher
Murray Hicks
Randall Hoyle
Philip Molleur
Paul Peterson
Daniel Pushee
William Vennard
Richard Hicks, Manager
Paul Moody, Manager

BASKETBALL (GIRLS)

Judith Bomil, Co-Captain
Gloria Paduch, Co-Captain
Dolores Collopy
Margaret Connor
Frances Eaton
Carole Harper
Lillian LeBrun
Gertrude Long
Mary McCarthy
Judith Poland
Marilyn Vaipan
Nancy Wright
Sandra Gibbs, Manager
Judith Slipp, Manager

CHEERLEADERS

Valerie Gray, Captain
Barbarann Howard
Dona Provencal
Patricia Sorbo
Marcia White

BATON TWIRLERS

Carol French, Captain
Eileen Cummings
Elizabeth Enis
Gertrude Long
Elizabeth Morrison
Patricia Norwood
Jacqueline Westwood

BAND

Kurt Anderson
Barbara Bowers
Sewell Bowers
Donald Caron
Gregory Caron
Basil Dixon
John Flynn
Donald Fogg
Gerald Hardy
Robert Hood
Priscilla Hoyt
William Johnson
Allard Klonel
Lawrence Litchfield
Edward Perzel
George Perzel
Arthur Poitras
Judith Poland
Franklin Prescott
Ronald Roach
Philip St. Germain
Theodore Tetreault
William Vennard

Cheerleaders



SENIORS

Valerie Gray, Captain
Elizabeth Enis
Patricia Norwood
Marcia White

JUNIORS

Carol French
Dona Provencal
Patricia Sorbo

SOPHOMORES

Barbarann Howard
Dorothy Vrouhas

FRESHMEN

Carolyn Howell
Katherine Morrow
Sandra Ricciardi

MASCOT

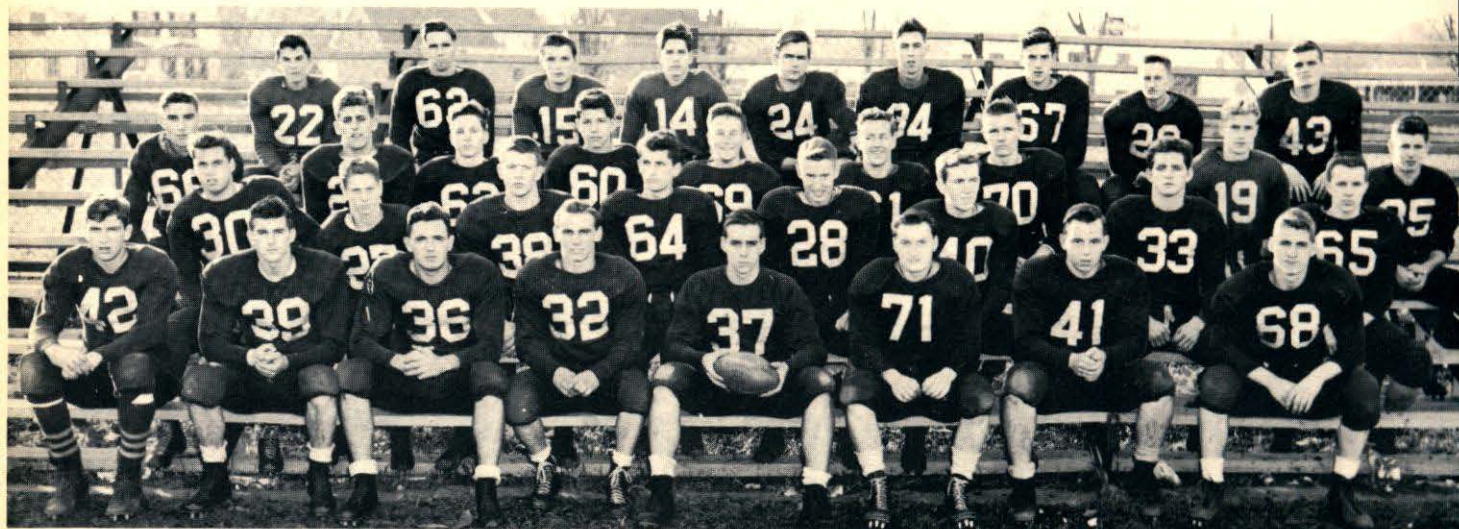
Claudia Whealen

COACH — Mildred M. Hehir

The Chelmsford High School cheerleading team, coached by Miss Mildred Hehir and Captained by Valerie Gray, wore their spotless white uniforms for both football and basketball seasons. The girls, with little Claudia Whealen as an added attraction, maintained their reputation for appearance and originality. Their fine performance was due in no small measure to the splendid leadership and ladylike qualities of Captain Valerie Gray, who joined the team in her sophomore year. The cheerleaders, in addition to their attendance at all regular games, participated in the Hudson Tournament and appeared at the Boston Garden with the boys' basketball team.



Football



THE SCORES:

CHS 13—St. Bernard's	0
CHS 8—Tewksbury	6
CHS 25—Dracut	19
CHS 32—Punchard	18
CHS 13—Wilmington	0
CHS 19—Ipswich	28
CHS 19—Weston	19
CHS 19—Johnson	0
CHS 13—Howe	0

Inspired by the capable leadership of Captain Joseph Marcotte and the equally capable tutoring of Coaches Joseph Nolan and Ignatius Ciszek, a terrific Chelmsford High eleven compiled the enviable record of seven wins, one tie, and one loss.

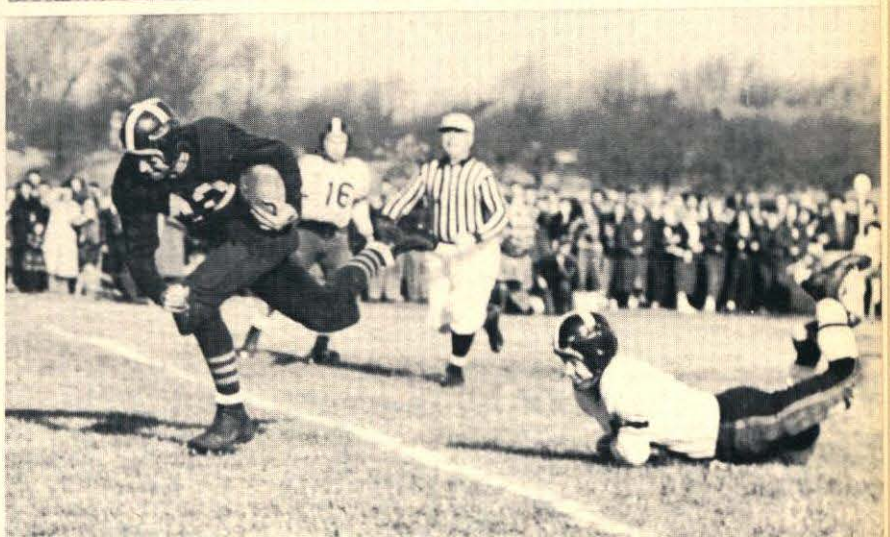
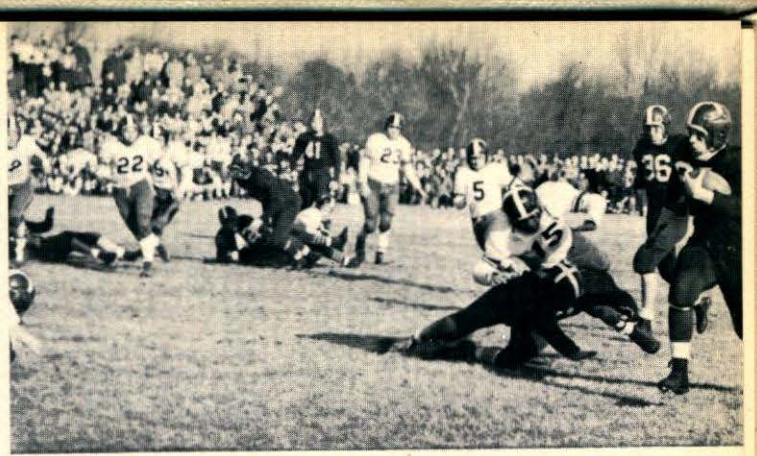
Chelmsford High School opened the season with a hard fought victory over St. Bernard's of Fitchburg. This victory was the beginning of a four-game winning streak which included the defeating of a rough and tough suburban foe from Tewksbury, the downing of a traditional enemy from

Dracut, and the overpowering of a neighboring Class C team from Punchard. The only defeat that was suffered by our boys was at the hands of a powerhouse from Ipswich, a team which swept on to win the state Class D crown.

In the annual finale on Thanksgiving morning Chelmsford High School copped the Suburban League crown by defeating Howe High School for the first time in eight years.

We all commend the fine spirit of Captain Marcotte and the tactical skill and football know-how of Coaches Nolan and Ciszek and hope that Co-Captains Hoyle and Hall inspired by all this will have an equally successful season.





Boys' Basketball



THE SCORES:

CHS 56—Ayer	38
CHS 64—Maynard	34
CHS 55—Punchard	67
CHS 91—Hudson	27
CHS 74—Wilmington	33
CHS 98—Howe	58
CHS 63—Dracut	50
CHS 72—Tewksbury	42
CHS 58—Burlington	51
CHS 63—Ayer	51
CHS 71—Dracut	70
CHS 69—Tewksbury	49
CHS 97—Wilmington	36
CHS 98—Howe	69
CHS 71—Burlington	62
CHS 39—Woburn	58

1953 and 1954 produced another highly successful season for the Chelmsford High School basketball team under the skillful direction of Murray Hicks. Lead' by the brilliant playing of Captain Thomas Payne, our team ended the season with the excellent record of fourteen victories, two losses, and the Suburban League Championship.

After getting off to a good start by defeating Ayer, our team was handed its first defeat by a strong Punchard quintet. However, the highlight of the suburban season was our second game with Dracut. As we had won by only 13 points in the first game, and since that team was considered our chief rival in the Suburban League, everyone was looking for a tough battle. With Dracut just as determined to win as we were, the game reached championship form when Dracut and Chelmsford see-sawed for the lead and when the C.H.S. boys came out from behind to win by one point.

With the sharpshooting of Payne and Gallagher, the rebounding of Dixon and Peterson, and the playmaking of Fitts, Chelmsford romped victoriously through the rest of the season. Not until the last scheduled game with the very strong Class B school from Woburn did Chelmsford receive its second setback.

Due to such a successful season once again our team was invited to participate in the Eastern Massachusetts Champion Basketball Tournament where, at Quincy, the boys met last year's Class D champs from Marshfield and went down to defeat.

Good Luck to next year's quintet.



Girls' Basketball



THE SCORES:

CHS 32—Acton	28
*CHS 16—Acton	10
CHS 43—Wayland	3
*CHS 18—Wayland	10
CHS 27—Methuen	36
*CHS 4—Methuen	12
CHS 33—Wilmington	25
CHS 22—Howe	31
CHS 46—Dracut	33
CHS 23—Tewksbury	36
CHS 36—Burlington	21
CHS 27—Sudbury	20
*CHS 10—Sudbury	6
CHS 45—Dracut	23
CHS 31—Tewksbury	46
CHS 52—Wilmington	41
CHS 48—Howe	49
CHS 39—Burlington	35
CHS 30—Methuen	31
*CHS 12—Methuen	27
CHS 26—Sudbury	18
*CHS 14—Sudbury	5

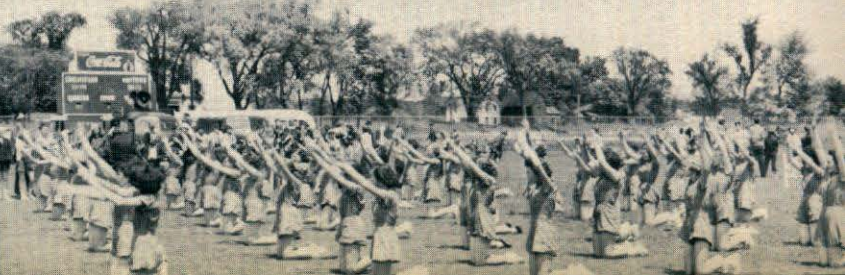
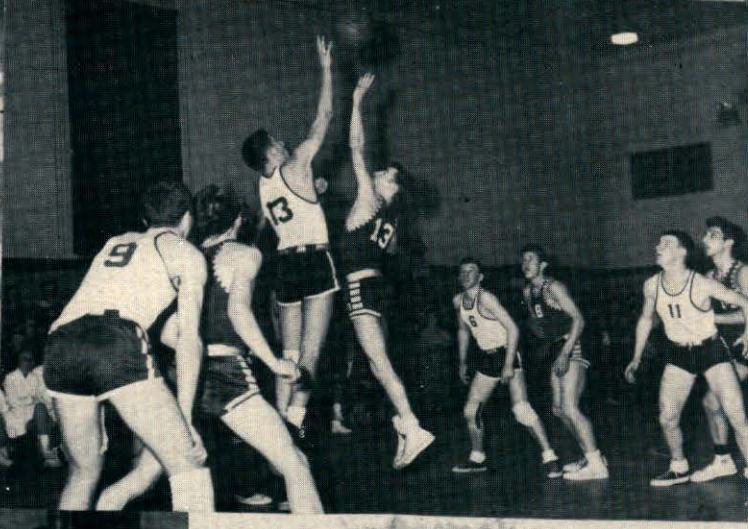
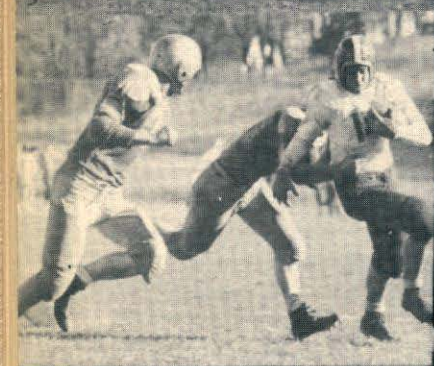
*Junior Varsity Games

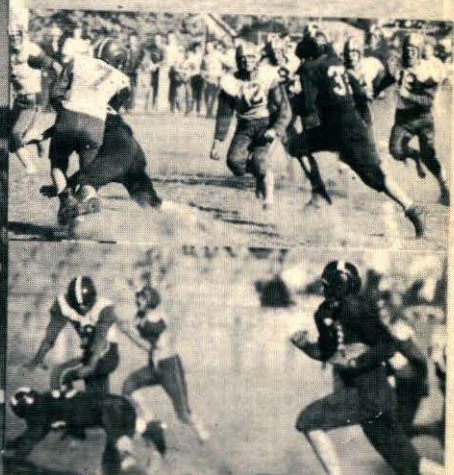
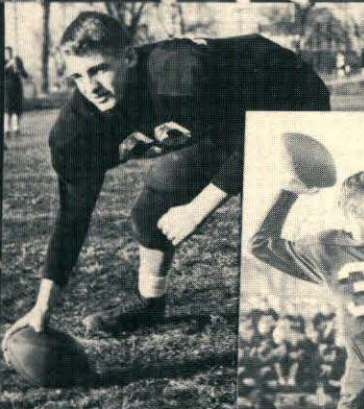
The Chelmsford High School girls' basketball team, led by Co-Captains Gloria Paduch and Judy Bomil, had a successful season this year under the competent coaching of Miss Nancy Cordingly. Both guards and forwards gave every game their utmost and won or lost with equal sportsmanship.

The Junior Varsity squad, under the leadership of Captain Joan Dodge also displayed true competitive spirit and sportsmanship.

We wish to congratulate both of these teams and their outstanding coach on their 1953-1954 season.







Baseball



THE SCORES:

CHS 13—Johnson	0
CHS 10—Burlington	3
CHS 4—Methuen	3
CHS 10—Wilmington	5
CHS 12—Tewksbury	1
CHS 4—Punchard	3
CHS 10—Wilmington	1
CHS 10—Burlington	9
CHS 4—Howe	5
CHS 5—Methuen	2
CHS 5—Johnson	2
CHS 5—Punchard	2
CHS 11—Tewksbury	0
CHS 2—Ipswich	8
CHS 5—Howe	4

Captained by Dean Haeusler and Bernard McGlinchey and coached by Mr. Joseph Nolan and Mr. Ignatius Cizek, the 1953 baseball team needs no picture, even if one could be found, to tell of a season so successful that the boys were able to clinch the Suburban title and to be invited to compete in the Eastern Massachusetts Baseball Tournament.

Since the 1954 baseball team is just beginning to shape up as *The Lion* goes to press, the picture of this year's team, the schedule and a sincere wish for another championship year under the captaincy of Lyman Pevey and Warren Bill is all that can be included.

The schedule:

Wilmington — Chelmsford
 Chelmsford — Johnson
 Chelmsford — Burlington
 Chelmsford — Methuen
 Chelmsford — Punchard
 Tewksbury — Chelmsford
 Chelmsford — Howe

Chelmsford — Wilmington
 Johnson — Chelmsford
 Burlington — Chelmsford
 Methuen — Chelmsford
 Punchard — Chelmsford
 Chelmsford — Tewksbury
 Howe — Chelmsford

Field Hockey



THE SCORES:

CHS 1—Sudbury	4
CHS 2—Acton	4
CHS 3—Wilmington	1
CHS 5—Tewksbury	1
CHS 2—Sudbury	3
CHS 1—Wayland	1
CHS 1—Acton	2
CHS 6—Wilmington	2
CHS 4—Tewksbury	2

The girls' field hockey team at Chelmsford High School has completed its second year of organized play under the excellent coaching of Miss Cordingly.

Co-captained by Frances Eaton and Patricia Norwood, the team enjoyed the season, winning four games, losing four and tying one.

We predict success for next year under the leadership of the co-captains elect, Carole Harper and Beverly Bell.

Student Council



President	Basil Dixon
Vice-President	Daniel Pushec
Corresponding Secretary	Valerie Gray
Recording Secretary	Barbarann Howard
Treasurer	Robert Ingalls
Senior Representatives	Gladys Moore, Philip St. Germain
Junior Representatives	Judith Bomil, William Vennard
Sophomore Representatives	Ann Marie Crowe, Murray Hicks
Freshman Representatives	Alberta Jones, Arthur Provencal
Assembly Chairman	Judith Poland
Welfare Chairman	Dona Provencal
Social Chairman	Philip Molleur
A. A. Representative	Kurt Anderson
Faculty Adviser	Mildred M. Hehir

In the four years since the Student Council has been a part of Chelmsford High School, it has done much to improve and foster its one interest, the students themselves.

The Student Council is an active organization. Each year members attend conventions held throughout the state, join in discussions, discover what other councils are accomplishing, bring reports home, and immediately try to institute improvements. One of its most outstanding being its yearly contribution of \$100 to the Public Address system and this year the purchase of the radio connected with our long-needed sound system. Proceeds from the Annual Talent Show provide funds for the purchase of sweaters for deserving athletes. Sweat shirts, book covers, and beanies are sold in great numbers. At all the home football and basketball games, members are on hand to sell coke and chips to spectators. On the more serious side, the Council lends a helping hand to the unfortunate. An annual Christmas collection provides a needy family with food, toys, and clothes. This year, for the first time, the student councils of Dracut and Chelmsford jointly sponsored a dance, which was held in the Chelmsford auditorium.

Through such activities, the Student Council helps to build better citizens. Its success is due in no small measure to the capable leadership of its president, Basil Dixon, and to the enthusiasm of its sponsor, Miss Mildred Hehir. It is proud that one of its members, Judith Poland, the present Assembly Chairman and an outstanding member of the Student Council, was elected to serve as the secretary of the Massachusetts Association of Student Councils.

Activities



National Honor Society



President Sandra Gibbs
 Vice-President Basil Dixon
 Secretary Dorothy Welch
 Treasurer Lyman Pevey
 Faculty Adviser Miss F. Christine Booth

MEMBERS

Valerie Gray	Judith Poland
Carol Merryman	Elsie Scholz
Patricia Norwood	Nancy Wright

The purpose of the National Honor Society, which is under the capable guidance of Miss F. Christine Booth, is to recognize those who have excelled in the attainment of scholarship, leadership, service, and character. To be selected for membership is a great honor to which every student should aspire. Candidates are initiated into the society after the second marking period.

The main project of the group this year was the sponsoring of help sessions for those taking the College Board Examinations. In March two members of the organization took the competitive examination for a National Honor Society Scholarship.

Junior Red Cross



President David Weeks
 Vice-President Mary McCarthy
 Secretary Elizabeth Morrison
 Treasurer Shirley Sutherland

HOMEROOM REPRESENTATIVES

Ellen Brow	Donna Marks
Ann Crowe	Donna MacKenzie
Joan Dodge	Priscilla McGaughey
Lois Dupee	John Morrissey
Lorraine Eno	Lawry Mowll
Judith Fisher	Gertrude Smith
James Greska	Donald Sweeney
William Kelly	Ruth Waitt
Judith Kroll	Jacqueline Westwood
Marie LaHaise	Marcia White
Marjorie Leslie	

Faculty Adviser—Miss Marjorie Scoboria

Under the able guidance of Miss Marjorie Scoboria, the Junior Red Cross at Chelmsford High School has successfully completed its year of activities. Again this year, after a membership drive in November, 100% enrollment was obtained from the student body.

Among the activities conducted by this group, which met every Tuesday, were: the making of a C. H. S. scrapbook to be sent to a school in Hawaii, the filling of gift boxes to be sent to schools overseas, and the preparation of writing cases, Valentine and Easter posters, cartoon and puzzle books with pencils for the veterans at the Bedford Hospital.

We hope that in the future the pupils at Chelmsford High School will continue with this worthy enterprise.

Baton Twirlers



SENIORS

Elizabeth Enis
Patricia Norwood
Jacqueline Westwood

JUNIORS

Carol French, Captain
Gertrude Long
Elizabeth Morrison

SOPHOMORES FRESHMEN

Eileen Cummings
Shirley Gould
Carol Leslie

MASCOT

Claudia Whealen

COACH

Mildred Hehir

The Baton Twirlers reported again to Miss Mildred Hehir for instruction and became more than ever an eye-catching unit in their snappy uniforms and tall hats with proudly floating plumes.

Carol French, captain, and Jacqueline Westwood, who served as a twirler for three years, were the backbone of the team which exhibited new techniques in stepping and twirling and went through the popular Bunny Hop routine.

The twirlers have attended the band in all its appearances at football games, in the Memorial Day parade, and at Lowell Field Day, and together the band and twirlers can boast of both ear and eye appeal.

The Band



The Chelmsford High School Band has had, as usual, an active, enjoyable, and successful year under the able direction of Mr. John Hahn.

During the football season, the band performed at all the games, both at home and away, adding color and zest to the occasion. At assemblies, the band welcomed the classes and bid them farewell with stirring marches, as well as delighting them with Bach, Beethoven, and Mr. Hahn's variation of "Dragnet." Christmas found the band journeying about the town to play carols for the shut-ins.

Besides displaying its talent and versatility and that of the director at its annual concert, the band upheld its reputation as an outstanding band in the Northeastern Music Festival at Lexington and in the Massed Band Concert at Nashua.

As in other years, the band has rounded out its season by playing for the field days of both Lowell and Chelmsford, for the Memorial Day observances, and for the grammar and high school graduations. Thus the Chelmsford High School Band has completed another year of service to both school and community.



Glee Club



Under the gifted direction of Mr. John Hahn, the Chelmsford High School Glee Club has been a very successful and hard-working organization.

The Glee Club has always been ready to serve our school and town by singing at assemblies, at band concerts, and for social, civic, and religious groups.

We wish to thank the Glee Club for representing Chelmsford High School in such an outstanding manner.

Press Club



MEMBERS

Carol Merryman, President
Beverly Axon
Barbara Bowman
Mary Lou Burelle
Marcia Cooke
Charles Marks
Carol McGovern
Donna McKenzie

Gladys Moore
Patricia Norwood
Judith Poland
Frank Robertson
Janet Slater
Dorothy Tassios
Jacqueline Westwood

Faculty Adviser — Charlotte Carriel

The Chelmsford High School Press Club, under the direction of Mrs. Charlotte S. Carriel, has served the public and school faithfully. The members of the club meet weekly for discussion and assignments. The press releases number from two to ten each week, the number depending upon the current activities in the school curriculum. The articles are written, corrected and typed, and in final form appear in the *Sunday Sun* and the *Chelmsford Newsweekly*.

Lamplighters



President	Kurt Anderson
1st Vice-President	William Johnson
2nd Vice-President	Richard Burt
Secretary	Nancy Wright
Treasurer	Ruth Moreton
Faculty Adviser	John Dunigan

The fourth successful year of the Lamplighters Club has come to a close, after a busy season of meeting the visual needs of the classrooms. This group, under the leadership of Mr. John Dunigan, has ordered and returned films, has assisted the faculty in showing educational films in the classrooms, and has taken charge of the projectors and the tape recorder. We wish to congratulate all the Lamplighters for having unselfishly given of their time and effort to promote and improve the use of audio-visual aids in Chelmsford High School.



Class History

FRESHMAN YEAR

Confusion and bewilderment on our first day—Miss McCarthy as acting principal—Klonel's milk bath—Mr. Bradley takes over Mrs. Poland's creatures in Room 10—Miss McCue and showers for the girls—"One dollar for paid assemblies, please."—horrified howls at Miss Hehir's first sneeze of the year—Mr. Conrad arrives, and we "go to work"—first freshman class to elect officers; Jerry Hardy, President; Shirley Dorsey, Vice President; Billy Connor, Secretary; Dorothy Becker, Treasurer—Student Council is organized—singing gaily with the Christmas Carols in the halls—hectic trips to Boston to win Tech Tourney in Class C—freshmen cop honors at First Talent Show—Spring Fling and money in our treasury—chest x-rays—last mad whirl at the end of school and we are lowly freshmen no longer.

SOPHOMORE YEAR

Who's the dapper with the crew haircut and horn-rim glasses in room 30?—strangling sounds as new French classes vainly try to pronounce French phonetics—Mr. Ciszek (Jim) arrives with an over-whelming welcome—Miss Cordingly and no more showers for the girls—"little people" in and out of room 20—smells of onion soup floating down the corridor from room 5—sound-proof bandroom—new system for report cards, only breaking the news four times instead of five—our own chapter of the National Honor Society is started—a new driver training car is presented to the school—the passing of a wonderful band instructor and worthwhile friend, who will always be remembered—National Water Pistol Association Day—Oh NO!! not FINALS!—and we step forward again to be proud juniors.

JUNIOR YEAR

Guidance changes hands, Mr. Green takes over for Mr. Campbell—Miss Greenberg in room 7—knee socks and white bucks—girls hit each other over the head with unmanageable hockey sticks—first prize for Booster Day float—weird music from the bandroom as Mr. Hahn composes "Oriental Fantasy"—skipping school to go and see Ike—heated political arguments, "What'cha mean ya don't like Ike!"—a television set for those who wanted to see our new President inaugurated—the band goes to the Golden Gloves—we see the boys off to the Tech Tourney again—vehement exclamations and grimaces as one drop of blood is extracted from our fingers. "Oh dear, I'm R. H. negative." "Cheer up, you'll live!"—our long-sought-after rings finally arrive—Dramatic Club introduced by Mr. Birdsall presents "A Date with Judy" (starring mostly juniors, rah, rah)—impressive installation of new members of the National Honor Society—we make our final step to illustrious SENIORHOOD.

SENIOR YEAR

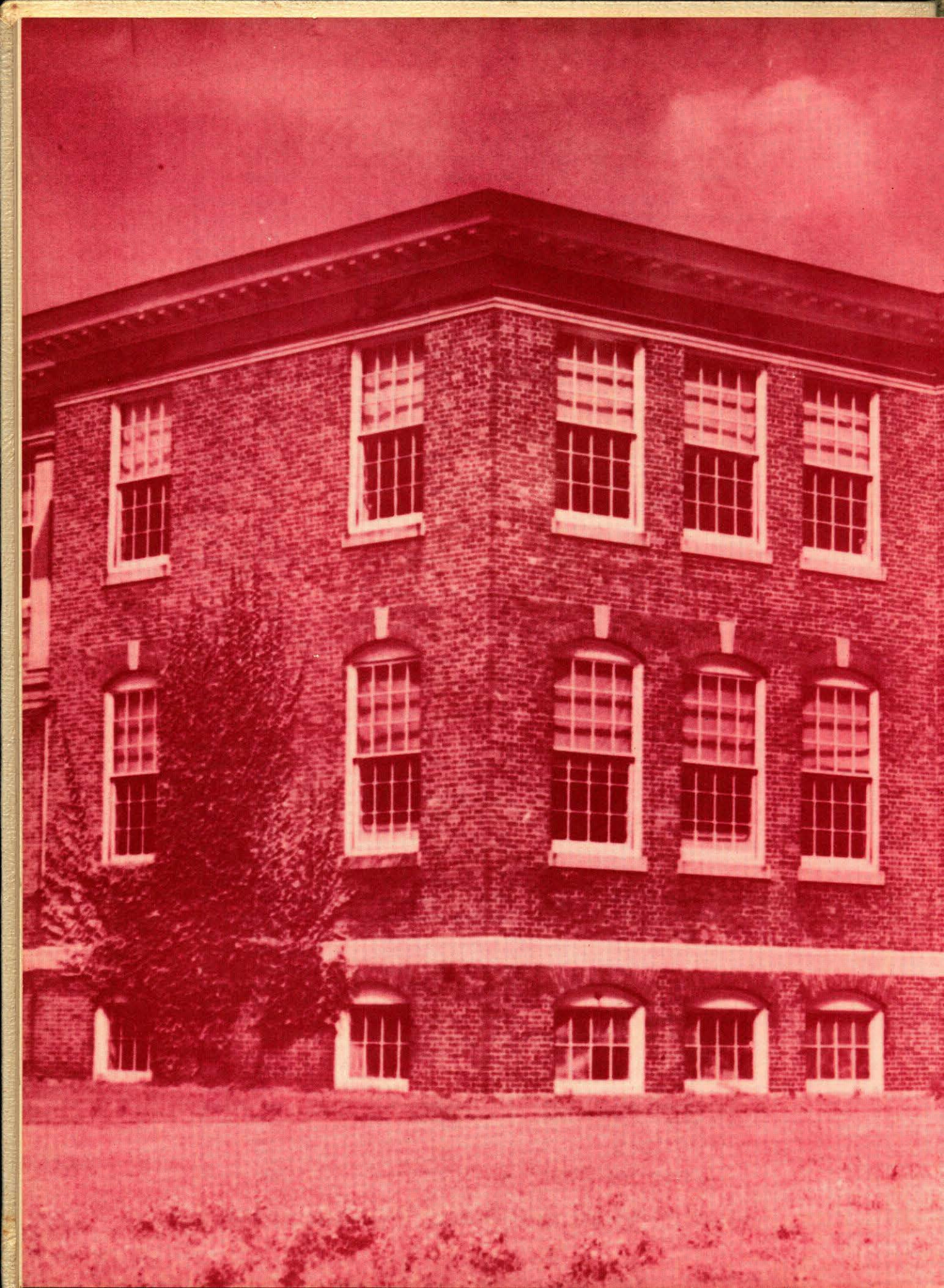
Greeted by the happy faces of new teachers, Mr. LeBlanc and Mr. Kevghas—introduction into the mysteries of physics—girls with multicolored hair—a sacred hush falls in room 31 as our last class officers are announced, "For president, Joe Marcotte; for vice president, Jerry Hardy; for secretary, Whitey Bill; for treasurer, Dottie Welch."—the great throngs at our first dance of the year—the Bunny Hop, Hokey Pokey, and Mexican Hat Dance make us look like a tribe of Injuns—suburban champs in football—x-rays again—sleeping figures draped over the desks in room 31—new automobiles, jalopies, and just plain junks seen in our would-be parking lot—suburban champs in basketball—Mr. LeBlanc gone, Mr. Eames in his place—strange men tapping on, drilling into, putting wires behind, and hanging strange boxes in front of the walls in every room—comes a dedication program, and our public address system is officially installed—senior girls win inter-mural basketball championship—Foo Foo dust makes an appearance—the unforgettable picture of senior boys with suits and ties—everyone says "cheeze" for the photographer—Shakespeare rolls over in his grave as MacBeth is murdered once again in English—car splitting applause the night of the talent show—our last prom, our last field day, our last class day, our first and last class trip, our last year book—the chills up and down our spines as strains of "Pomp and Circumstance" begin—speeches—songs—diplomas—receiving line—flowers—kisses—sad tears, and joyful smiles, and four wonderful years are over.

CLASS WILL

We, the class of 1954, of the town of Chelmsford, County of Middlesex, and State of Massachusetts, being of sound minds and memories, do hereby make, publish, and declare this to be our last will and testament hereby revoking any wills heretofore made by us.

Testator	Bequeathes	Heir
Kurt Anderson	Conservative clothes	Phil Coddair
Elaine Avila	Carefree manner	Gertrude Long
Beverly Axon	Driving license	Sears & Roebuck
Dorothy Ayotte	Petite ways	Romeo Noel
Bertha Beaubien	Career at Jack's	Barbarann Howard
Dorothy Becker	Italian haircut	Lois Lupien
Claire Belanger	Her animation	Sleepers in Study Hall
Robert Bell	Fur hat	The biology class
Warren Bill	Bottle of peroxide	Nancy Valorose
Norman Bishop	Shapely figure	Dick Burt
Soukie Bowers	"Hep" clothes	Mr. Healey
Barbara Bowman	Her appetite	Judy Slipp
Joe Brotz	Levies	Allan Goldman
Mary Lou Burrelle	Love for the Classics	Paul Peterson
Ann Cafiso	Gentle voice	Glenn Chambers
Howard Carkin	1 large grin	Nancy Medin
Irene Cheney	Office position	Willie Kelly
Paul Chevalier	Way with the ladies	Charlie Norton
Dolores Collopy	Short curly hair	Helen Hayes
Marcia Cooke	Her attractive wardrobe	Stylish underclassmen
Peggy Curran	Unassuming ways	Larry Miller
Artie Cutter	Cowboy boots	Judy Bomil
Jean DeBarge	Artistic ability	William Vickery
Mike DePalma	Athletic ability	Tom Gallagher
Basil Dixon	Size 13 shoes	Roger Auger
Shirley Dorsey	Salesmanship	Student Council members
Lois Dupee	Messy paint brushes	Miss Greenberg
David Dutton	1 bushel of absentee slips	Miss McCarthy
Frances Eaton	2 battered knee pads	Kay Doyle
Jane Ellinwood	1 slightly used hockeystick	Posterity
Betty Enis	Her dreams of the future	To the starry-eyed
Carolina Ferriera	Black hair	Donna Marks
Penny Fitts	Freckles	Joe Boyd
John Flynn	Ready wit	Don Caron

Testator	Bequeathes	Heir
Shirley Gagnon	Place on the South bus	Judy Kroll
Louise Gallagher	Her boyfriends	Anyone who can catch them
Sandra Gibbs	Perfect record	Jimmy Gosselin
Valerie Gray	Her cheerleadership	Claudia Whealen
Theresa Gosselin	Her neat appearance	Those who need it
Jimmy Greska	Priscilla	No one
Rita Grondine	Few words	Joe Gravelle
Robert Henderson	Ease of manner	William Prescott
Jerry Hardy	His walk	To anyone built like him
Robert Hood	Bed in physics	Wendell Luke
Doris Jenkins	Last minute dash to homeroom	Everyone on the South bus
Charlie Johnson	Studios ways	Sophomore boys
Gail Johnston	Her fingernails	Nancy Leslie
Dick Kenyon	Love for study	David Blackadar
Allard Klonel	Lanolin hair—plus	Robert Russell
Pat LaCourse	Her hopechest	Freshman girls
Joan Lajoie	Her modesty	Harvey Miller
Lillian LeBrun	Basketball ability	Mary Blaisdell
Marjorie Leslie	Dented fenders	Doris Brooks
Helen Logan	Position in Rainbow	The next in line
Albert Lupien	His jeep	Miss Booth
Donna MacKenzie	Quiet manners	Judy Fisher
Carol McGovern	Bermuda shorts	Danny Pushee
Joe Marcotte	Cheerleading skill	Randy Hoyle
Charlie Marks	His muscles	Willie Hall
Genevieve Mello	Soft voice	Marie LaHaise
Carol Merryman	Duplicator	Janet Slater
Arline Miller	Striped sweaters	Pat Cutter
Paul Moody	Stratosphere	David Sutherland
Gladys Moore	Extra credits	Ronnie Taylor
Ruth Moreton	Her skis	Larry Litchfield
Albert Narus	Bowling ball	Dinnigan's Alleys
Pat Norwood	Baton	Carol French
James O'Neil	Broken locker doors	Mr. Conrad
Virginia Pajak	Her polkas	Mr. Kevghas
Tom Payne	Crazy mixed-up hats	Ronny Thayer
George Perzel	Jazz records	Miss Scoboria
Lyman Pevey	Hot rod driving	Newton Selfridge
Arthur Poitras	Arch-supports	Anyone with flat feet
Judy Poland	Vitality	Nancy Cross
Franklin Prescott	Box of aspirin	Faculty
Florence Raymond	High heels	Beverly Bell
Pat Rioux	Never-lasting haircuts	Prunella Pouliot
Ronald Roach	Drums	Donald Fogg
Frank Robertson	Extra credit stories	Any ambitious junior
Phil St. Germain	Hockey stick, skates and ice	Mr. Hahn
Elsie Scholz	Vocabulary	Noah Webster
Beverly Snook	Giggles	Eileen Harrington
Warren Sully	His clear enunciation	Miss Hehir's French Classes
Shirley Sutherland	Her special book, "How to Grow Tall"	Thomas St. Germain
Ted Tetreault	Disc-jockeying	Ray Marchand
Barbara Thiffault	Height	William Gould
Joan Vennard	Gum	Mrs. Carriel's waste basket
Judy Walker	Dark eyebrows	Mrs. Poland
Dotty Welch	Tax collecting	Future senior treasurer
Jackie Westwood	Pony tail	Red Molleur
Marcia White	Good posture	Pat Elliott
Nancy Wright	Study habits	Roland Doyle



*That true success lies not in gain;
That selfishness leaves e'er its stain;
That each must do whate'er he can
To aid the Brotherhood of Man.*

