



The Courant

Chelmsford
High School

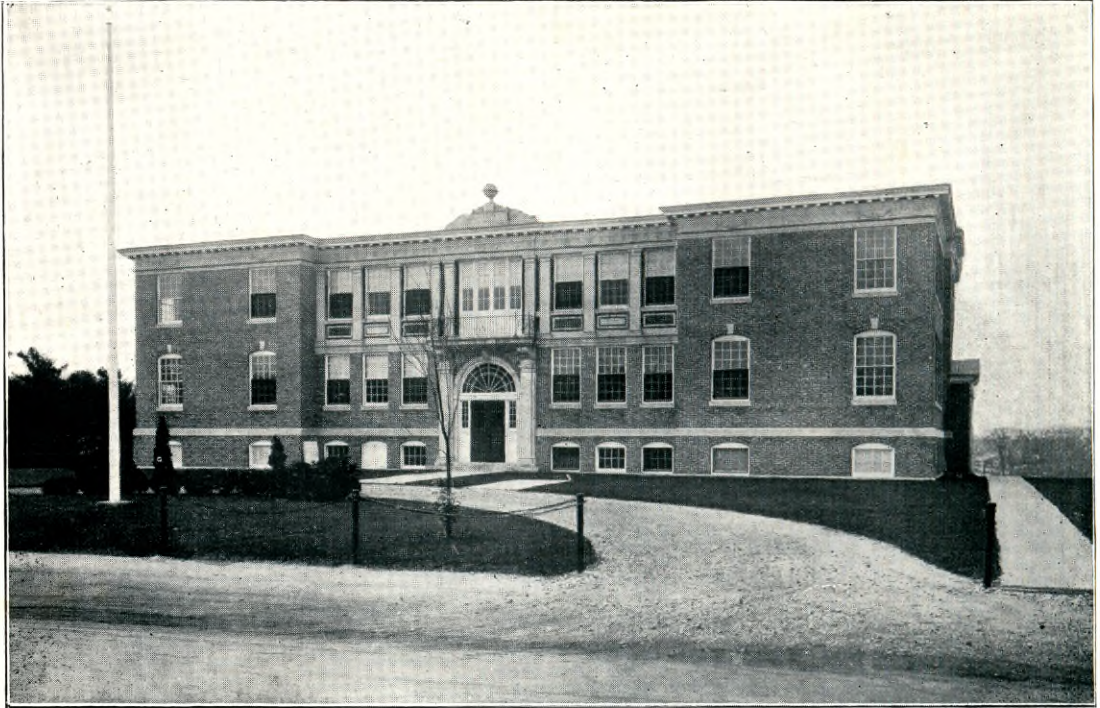
1 9 3 4

The Courant

of

1934

Edited by the Class of 1935



Chelmsford High School

A school is not composed alone of bricks and mortar but rather of memories and friendships founded within its walls.

As years go on, we shall forget the heavy tasks performed and shall retain but the bright ideals set before us, even as the pure gold is seperated from the dross.

We owe much to Chelmsford High School and know that she will watch with pride our progress outside her protecting environment. Vale! Chelmsford.





Dedication

TO

LUCIAN H. BURNS

In acknowledgment of his sincerity, willingness to assist, and high conception of the purpose of secondary education we, the class of 1935, offer this tribute in a spirit of gratitude and humble appreciation.

Faculty

God sends his teachers unto every age,
To every clime, and every race of men,
With revelations fitted to their growth
And shape of mind, nor gives the realm of
Truth

Into the selfish rule of one sole race:
Therefore each form of worship that hath
swayed

The life of man, and given it to grasp
The master key of knowledge, reverence,
Unfolds some germs of goodness and of right;
Else never had the eager soul, which loathes
The slothful down of pampered ignorance,
Found in it even a moment's fittful rest.

James Russell Lowell



Faculty



C. EDITH MCCARTHY
Vice-Principal
Salem Teachers College



F. CHRISTINE BOOTH, B. A.
Latin, Mathematics
Colby



DAISY B. MACBRAYNE, B. A.
English
Boston University



PROCTOR P. WILSON, B. S.
Science
Mass. Institute of Technology



HILDA B. DUNIGAN, B. S. E.
Commercial
Salem Teachers College



MORRIS L. BUDNICK, B. A.
Mathematics, Science
Tufts



GEORGE R. KNIGHTLY, B. A.
Social Sciences
Aurora

F. Christine Booth

*Died 1934
Hilda
B.
Dunigan*

M. L. Budnick

*Keep up the
excellent work
started*

*Geo. R. Knightly
Coach*

The Latin teacher the best happened to Libby

THE COURANT



Mildred 1934

MILDRED K. LIBBY, B. A.
History
Wheaton



*Best friend to me
Mildred L. Wells*

MILDRED L. WELLS, B. A.
English, Mathematics
Boston University



was killed by Sept. 1934

Dorothy F. Gay

DOROTHY F. GAY, B. A.
French
Wheaton



*was a quiet, efficient scholar
J. J. MacLaughlan*

JOHN J. MACLAUGHLAN, Ph. B.,
M. A.
English
Holy Cross
Boston University



MRS. MAE LEWIS, R. N.
School Nurse
Post Graduate Hospital



CHARLOTTE L. HYDE
Supervisor of Music
Lowell Teachers College

Don't be seeing you on the stages - reason is your graduation. Rita Ferron 35 -

The Art of Happiness

Have you ever felt, in those moments when all the care and worry of the day seems to melt away, that you have not really understood what happiness is? Then, have you ever gone further in your thoughts and discovered that it is not the millionaire who is always smiling and laughing; it is not the boy or girl who has everything who is the most cheerful? The man or woman, boy or girl, who has learned to enjoy the most commonplace tasks and the everyday happenings, and who has experienced the pleasure received in doing the things that are right knows what real happiness is.

The interest of the millionaire is self-centered. How can he possibly be happy if the basis of happiness is the love of something outside self,—the dedication of life to the service of others. The person who can see none other than himself soon becomes bored, cynical, and believes the whole world to be wrong. He discovers that his character is not what he would like it to be.

The man who works for his living, on the contrary, finds life worth living. His work takes the sting from the petty trials, sorrows, and blunders of life. His own self retires to the background, and his wife and children and associates become his main thought. He works and lives for them; and, because he is unselfish, kind, loving, tender, and helpful, they, in turn, do everything in their power to make him happy.

So it is with the school boy.

He, who will not have to work for his living when he finishes school, pays no attention to his lessons, and thinks only of himself. His schoolmates do not enjoy his company; so the young fellow leads a very dull life. He finds nothing delightful about himself.

The industrious scholar, who shows sustained interest in his lessons, teachers, and schoolmates, gets the greatest joy out of living. His mind is so occupied with thoughts of school and his classmates that his own person does not "get much of a show". His consideration for others brings him their love and respect. He is popular! He is happy, for popularity brings happiness.

Having proceeded thus far in your reverie of happiness, have you not firmly resolved that you will start life anew and set your goal for—happiness?

RITA FERRON, *Editor.*



*Just to the
to beat of boom
Just this a good
alright*

“The proof of the pudding is in the eating” is a proverb of infallibility. The success of this Book lies, not in the hours of hours of labor that were spent in its manufacture, but in the enjoyment that you, the student or friend of Chelmsford High School, may derive from it.

We ask you not to scoff at the faults which may have crept in despite all vigilance but to take the Book for what it is, a true, interesting record of our scholastic career.

Board of Editors

Editor-in-Chief, RITA FERRON

Literary Editor, MARJORIE LOVERING

Humor Editor, NORMAN HOELZEL

Art Editor, FRANCES KRASNECKI

Social Editor, HELEN MCQUADE

Sports Editor, MARSHALL HOLT

Business Mgr., LEONA MACLAUGHLIN

Ass't Bus. Mgr., LULACK JAMROS

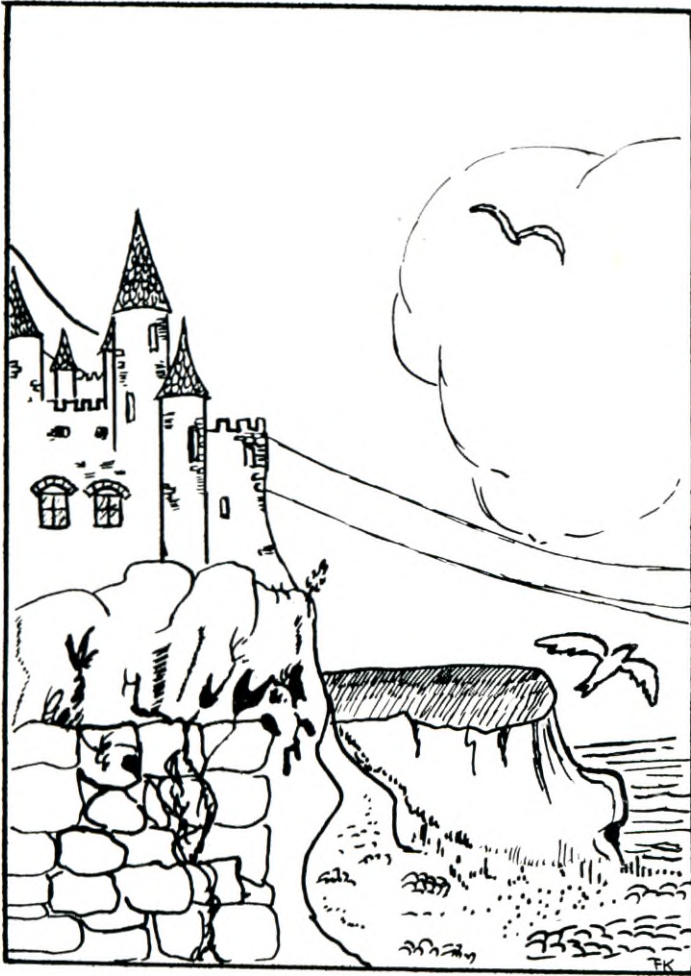
Sales Manager, ROBERT DUTTON

Advertising Mgr., ALFRED COBURN

ADVISERS

Business, C. EDITH MCCARTHY

Literary, JOHN J. MACLAUGHLAN



Seniors

MARY ANNIE ANGUS

Graduation Speaker
Senior Play
Class Executive Committee '34
Chemistry Club '34
French Club '33, Secretary '34
Health Club, President '34

When, in the midst of winter, the snow falls from the heavens so quietly and peacefully, it reminds us of Mary. She has these qualities and an added dignity of her own.

In her smooth, efficient manner, she has established a commendable record both in class and club work.

The coming generation will be fortunate to have Mary as its teacher. She has all the qualifications of an able leader. Good luck.



CONSTANCE AVERELL

French Club '34
Health Club '34
Latin Club '34
Junior Glee Club '32 Akron, Ohio
Latin Club '33 Akron, Ohio
Orchestra '31, '32 Akron, Ohio

Attractiveness and gentleness characterize "Connie". She has been a member of the class for two years, transferring from Akron, Ohio. However, this brief time has been sufficient for her to show us the workings of a keen and active mind. Her ready answers to difficult questions have been a revelation to some of us.

Our best wishes for your happiness and success at Colby!



EVELYN AGNETHE BECKVOLD

Basketball '32, '33, '34
A. A. Board-2nd Vice President '34
Booster Day Committee
Senior Prom Committee
Senior Play Committee
Health Club '34

"You ought to be in pictures," Becky! and we don't mean the funnies.

Everybody who followed the basketball games will admit that Evelyn certainly "shone as brightly as Jupiter or Mars" when she demonstrated her ability to "land it in the basket".

This "star's" greatest ambition is to become a hairdresser, and, from the appearance of her own blonde hair, her success is certain. We shall all patronize her shop, you can bet!



PHYLLIS MARJORIE BERUBEE

Blue Moon Staff '34
Bank Trustee '33, '34
French Club '33, '34
Health Club, Treasurer '34
Senior Play Committee
Senior Prom Committee

"Phil's" quiet and ambitious nature will surely lead her up the steep steps to success.

As "Blue Moon" editor, C. H. S. has seen her ability, not only to choose, but to write, excellent stories.

Her efficiency as a bank trustee was evident. With this as a background she looks forward confidently.

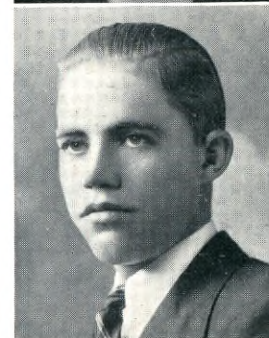


THURE HAROLD BLOOMGREN

Senior Play Committee

We must admit Thure is one senior who is successful in being the center of interest through his unexplicable knack of creating laughter. We suspect he has been the stimulus behind many an outburst from the office practice group, but somehow, he would become serious so quickly that he never was included in the reprimand which followed.

Thure hopes to attend aviation school—may he soar to fame.





OLIVE LOUISE BOCKES

Latin Club '31
Health Club '34

Senior Prom Committee

The fact that Olive has been with us for so short a time is regretted by us. We are certain that her ability, sincerity, and willingness would have added still more honors to her reputation. As it is, we are glad to have known her and will long remember her kindly manner and charming personality.

We hope her career at college will be unbroken, and that future classmates may enjoy four years of her companionship.



HELEN MILDRED BROTZ

Health Club '34

We have thoroughly enjoyed Helen's company for the past four years. To some of us, she seems quiet and rather bashful, but most of us have had the pleasure of knowing her gay and laughing side of life.

With her genial manner and competent business training, we are assured that she will continue steadily up life's pathway.



PRISCILLA WINTIE BURDICK

Year Book Staff '33
Blue Moon Staff '34
Health Club '34

Senior Prom Committee
Senior Play Committee
Chemistry Club '34

The Hall of Fame of C. H. S. has been greatly honored by the addition of one who is known as the "Class Artist". The "Blue Moon" this year and "The Year Book" of '33 have been adorned by her accomplishments. Her friendships at C. H. S. will not end when the gates of Commencement have closed. Bon Chance to you.



FRANK ARTHUR BURTON

Year Book Staff '33
French Club '33, '34
Senior Play

Chemistry Club '34
Inter-class Basketball '31

It is seldom one finds a boy who possesses such a combination of qualities as Frank. Indeed, we don't know which of his characteristics is the most prominent. First, we think of his keen intelligence; second, of his refined mannerism; and third, of his constant cooperation. All of these traits, and many more, Frank has manifested since he entered C. H. S.

May he ever merit the praise which he has so justly earned during his career at C. H. S.!



DOROTHY MAY BUTTERS

French Club '33, '34
Health Club '34

Senior Prom Committee
Senior Play Committee

The one outstanding characteristic about "Dot" is her apparent willingness to sit back and let other people take the honors. Although always well prepared in her lessons, "Dot" never had the urge to flaunt her knowledge. Somehow, she lacks all the temperament which red-headed people are supposed to possess, and substitutes for it a delightful calmness. Seldom have we seen "Dot" ruffled, except when she and Ellen bubble over with some real exclusive joke.

Happy and successful days at Boston University.

FRANK S. BYAM

Baseball '34
Football '33

P. A. D. Club '34
Chemistry Club '34

Frank is a tall, quiet chap who found a lot of popularity fighting for the "pig skin" on the campus. He has been with us only this last term, but he has gained a reputation which won't be forgotten. We wonder what his profession will be; but his character and bearing will surely lead him to prosperity.



DONALD CHARLES CALDER

P. A. D. Club '34

Inter-class Basketball '34

This good-looking, nonchalant young partner of the "Calder Brothers, Inc." is the lad from Chelmsford. "Don" certainly is much sought after, from all appearances!

He expects to go into the electrical plumbing business, so don't be shocked by his success. We're all for you, Donald! You may expect a great many calls for business from your many friends at C. H. S.



ROGER THOMAS CALDER

P. A. D. Club '34

Inter-class Basketball '34

Chemistry Club '34

Roger is the rather quiet and unassuming twin who has endeared himself to the hearts of all his classmates.

He is well known for his acting ability, and never fails to entertain even the most critical audience.

Roger wishes to become a farmer, and, you must understand, he's going to be a modern farmer. We know his products will be the best!



PHYLLIS CAPONE

P. A. D. Club '34

Senior Play Committee

Health Club '34

Inter-class Basketball '32, '33, '34

Year Book Staff '33

Inter-class Soccer '31, '32

The P. A. D. club boasts of a very valuable member in the person of "Phil". This attractive young lady, with her snapping brown eyes and slick black hair, is also a very diligent worker in many other activities.

She hopes to enter the nursing profession in the near future. Lucky patients!



MARGARET RITA CHRISTOUN

Inter-class Basketball '32, '33, '34

Soccer '32

Health Club '34

Booster Day Committee '32

Chemistry Club '34

The Class of '34 could not be complete without one who loves to laugh and chatter. Margaret is noted for her fine disposition, her willingness to lend a helping hand or grant a favor.

We know these accomplishments will be an asset to Margaret in making her an efficient nurse.





BLANCHE EVELYN CLOUGH

Basketball '31, '32, '33, Capt. '34 Senior Play Committee
A. A. Board '32, '33, '34 Year Book Staff '33
Senior Prom Committee Health Club '34

Is she a popular young lady? Is she cute? You bet! With her winning smile and charming personality, "Cloughie" could not help becoming everybody's friend.

She has distinguished herself as the captain of our champion basketball team. Three cheers for our captain!

We know Blanche will be successful in her future endeavors. Best of luck, "Cloughie"!



BLANCHE VIOLA DEPUTAT

P. A. D. Club, Secretary '34 Inter-class Basketball '32, '34
Senior Prom Committee Chemistry Club '34
Senior Play Committee Health Club '34

"Dep" has demonstrated her mental ability by her high grades and her art by the many posters which have been done by her deft fingers.

The P. A. D. class has appreciated her careful suggestions for improvement in the school administration.

Happy years and great success in your chosen profession, Blanche.



GEORGE RICHARD DIXON

Senior Prom Committee P. A. D. Club '34
Basketball '32, '34 Class Vice President '32
Football '31, '32, '33 Chemistry Club '34

George has always taken a lively interest in C. H. S. and its activities. Basketball and football have been his specialties. Many times, he has punted the ball to safety or made a basket to boost our score! This year, George has been a vigilant member of the P. A. D. Club, assisting in the corridors and assemblies.

Accept our best wishes for your happiness and success, George, in the fullest measure!



CHARLES FRANCIS DONALDSON

Football '30, '32, '33 P. A. D. Club '34
Inter-class Basketball '34 Chemistry Club '34
Senior Prom Committee Senior Play

Here is "Donkey", class comedian and actor! It is difficult to feel that life has its trials and tribulations when Charlie is around. His ready wit and generous nature have been a delight to all.

On the football field and on the basketball court, he displayed his athletic worth. As "Andy" in the Senior Play, he won the praise and applause of all present.

May your future never be clouded, Charlie.



ROBERT ELLIOT DONALDSON

Football '31, '33 Basketball '34
Senior Prom Committee P. A. D. Club '34

"Robbie" is gay in spirit and set in purpose. Cheerfully and determinedly, he has worked among us and accomplished much.

This year, he has made quite a name for himself. His defensive work in football was superb. On the court, at guard, he again displayed his defensive ability. He, also, has held a major place in school club activities, especially in the P. A. D.

Keep up the good work, "Robbie"!

RAYMOND GERARD DUCHARME

Basketball Manager '34 *Track '32*
Baseball '32, '33 *Senior Prom Committee*
Inter-class Basketball '31, '32, '34

Who could be more studious than Ray? We see him most of the time with his books under his arm, tending strictly to business.

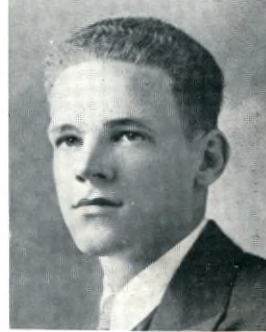
His capacity to accomplish what he undertakes is not confined to the classroom. On the baseball field, he has been a steady worker for the team; and as manager of basketball he was efficient and dependable.

We hope the future rewards him with great success.



ARTHUR DURGIN

It seems Arthur was blessed with a number of gifts, not the last of which are his scholarship and neat appearance. Quiet and unassuming, you've got to know him before you can really enjoy his sincere friendship. After his bow in June, he makes his way towards a business career.



PAUL NORMAN FINNEGAN

Football '32, '33 *Inter-class Basketball '32, '34*
Senior Play *P. A. D. Club '34*

From a retiring freshman, Paul has developed into a sociable and outstanding senior. Indeed, he has even traced his relationship to some of his fellow classmates!

On the football field, Paul has participated energetically and merited our highest praise. As "Wayne", the leading man of our Senior Play, he received our hearty applause.

We recommend the field of salesmanship to this pleasant and able young man.



LOUISE ANN FITZPATRICK

Basketball '31 *Health Club '34*
Soccer '32

Although she may be small in stature, "Fitzie's" delightful impishness makes up sufficiently for her lack of height. We wonder how early she rises in the morning, for she seems always to be groomed to perfection.

She has not decided on her career, but we feel sure that she will be a success in whatever she undertakes.



EVELYN LOUISE FLEMINGS

A. A. Board, Treasurer '34 *Basketball '32, '33, '34*
French Club, Secretary '33; Treasurer '34 *Health Club '34*
Senior Prom Committee *Latin Club '32, '33, '34*

Here is one who has used sound judgment in all undertakings. Our classes have been enlightened by her intelligent contributions, our basketball team assisted to victory by her consistent playing, and our Latin Club made the more "alive" because of her leadership.

Continue the good work at Bouvé, Evelyn.





ALLEN GRANT FLETCHER

President, A. A. Board '34 French Club '33, '34
Baseball '32, '33, '34 Latin Club '32, '33, '34
Basketball '33, Capt. '34 Class Executive Committee '32, '33, '34
Football '32, '33

"Sam, Sam, the three letter man!" An athlete at heart, as well as a trifier with hearts is Allen. All sports have welcomed him as a cheerful and valuable participant, but the baseball team has more than benefited by his pitching. "What they can't see, they can't hit!" says Sam, and delivers the ball accordingly.

His popularity is evidenced by his election as President of the A. A. and Captain of the baseball team.

We can't imagine any trouble ahead for "Sam"—look at that grin!



EDWARD WARREN FREEMAN

Senior Play P. A. D. Vice President '34
Football '29, '30, '31, '32, '33 Track '31, '32
Basketball '30, '31, '32, '33, Capt. '34
Baseball '31, '32, '33

"Do you wanna buy a duck?" If so, see "Ed". Should the market on ducks be low, then he will graciously accommodate you.

"Ed's" good nature has made him popular with everybody. His list of activities show him to be an athletic enthusiast. His participation in the latter has been both wholesome and beneficial to the teams. In the Senior Play, he showed Thespian ability in the roll of "Grandpa Hardy".

With this background of achievement, we're sure of his success at Springfield College.



RUTH ARLENE GREEN

Health Club '34 Senior Prom Committee

Although "Ruthie" has been with us only a short while, she has endeared herself to the hearts of everyone with her delightful smile, sparkling eyes, and cheerful disposition.

Her scholastic ability is equalled only by her Terpsichorean achievements.

May you always hold a prominent place in the hearts of the Class of '34.



MILTON WELDON HAIRE

Football Manager '33 Latin Club '32, '33, '34
Basketball '33, '34 French Club '33, '34
Baseball '32, '33, '34 Tennis '32

Have you ever heard the story of the tortoise and the hare? If so, recall the speed of the latter and you will have some idea of the agility of our Haire. However, Weldon doesn't get exhausted and fall out of line, but keeps moving to the finish. On the basketball court and the baseball diamond, Weldon has covered ground with swiftness and ease. Perhaps, if we wish to impress you with his ability in baseball, we should compare him to a certain "rabbit" rather than a "hare".

Weldon plans to enter college next year. May he grow to height and fame.



MARGUERITE LEE HANNAFORD

Latin Club '34 Inter-class Basketball '32, '34
Glee Club '34 Senior Prom Committee
Health Club '34

When you look at Marguerite's beautiful, golden hair, and lovely, blue eyes, you can't help thinking of lavender and rose petals. She looks as if she has just emerged from a picture.

Marguerite is very talented, being endowed with both instrumental and vocal abilities.

We're wishing you the very best of luck, Marguerite.

HAROLD RAYMOND HANSEN

P. A. D. Club '34
Class Executive Committee '34
Chemistry Club '34

Football '33
Track '31, '32
Inter-class Basketball '34

"Ray" is one of our most grown-up classmates. Probably his contact with the business world has helped to make him mature. His duties at the Canada Dry Corporation rather handicapped his participation in athletics until this year, when he went out for football and proved to be a star half-back. How we were thrilled by his brilliant dashes down the field! Unfortunately for us and for Raymond, an injury removed him from the team early in the season.

In the paths which lead to success, "Ray" is sure to be in the "running."



EVELYN MAVIS HAYDEN

Senior Prom Committee '34
Blue Moon Staff '34
Health Club '34

Basketball '34
Soccer Ball '31

"Business is what makes the world go 'round." That's evidently Evelyn's motto, for she has faithfully fulfilled her tasks as a commercial student. As the Business Manager of the "Blue Moon" she has shown remarkable results. She played basketball and helped annex several victories. We wish you happiness and success as private secretary to some financial genius.



ALBERT ROBERT HEDLUND

Radio Club '32
Stamp Club '32

P. A. D. Club '31
Chemistry Club '34

Working very diligently in the "lab", may be seen a very quiet young man; but, appearances are often deceiving!

"Al" has proved worthy of much praise for his various accomplishments in the scientific organizations.

His choice of life work is in the electrical field. We feel sure he has the necessary qualifications.



S. MILLICENT HILL

Health Club '34
Senior Prom Committee

Senior Play Committee
Health Club

A smile for every one marks "Millie" as one of the most winsome girls of '34. She has an air of mischief about her which adds to her attractiveness and endears her to all.

"Millie" believes that the joy of living is to laugh whenever possible, and let the serious people do the worrying. You're right, "Millie", worry never solved any problem.

Here's to your happiness—always.



RITA MARGARET HINES

P. A. D. Club '34
Health Club '34

Though quiet and reserved in her classes, Rita has no such inhibitions outside. The shy, sweet smile which quivers around her mouth undoubtedly denotes a deep sense of humor, enabling her to enjoy life in her own quiet way. Better still, she knows just when to be gay and when to be serious.

Her calm manner and determination to accomplish what she undertakes, guarantee her success.





VIRGINIA FRANCES HINES

Latin Club '32
Senior Play

Health Club '34

Like a flower, she grew (not very tall) and blossomed forth in the Senior Play as "Marion", the leading lady.

Virginia is known to us as an ideal chum and pleasant conversationalist. Her scholastic work has always been faithfully accomplished despite circumstances.

May her amiable manner and persistent endeavors be rewarded.



RALPH HOUSE

P. A. D. Club, President '34
Inter-class Basketball '31, '33

Football '32, '33 (Capt.)
Year Book Staff '33

One of the rarest abilities is that of "leadership". This is one of Ralph's outstanding points, as was proven when he efficiently directed the P. A. D. club and captained the Football team.

We feel that as he has led competently, so shall he guide himself to future success.



W. HERSEY HOWARD

Graduation Speaker
Class Vice President '33
Senior Prom Committee

Latin Club '32, '33
Chemistry Club '34

Inter-class Basketball '31, '32, '34

Clever? Intelligent? Capable? All of these suit Hersey to perfection. Hasn't he proven it by winning honors as a graduation speaker? Yet, this popular young man does not spend all his time "grinding". Just take a look at those rosy cheeks and that mischievous grin! Aren't they signs of his fondness for sport?

Hersey plans to be a college man. Chelmsford expects to hear much about this bright young man in the future.



ERNEST JANULIS

Latin Club '32, '33, '34
Radio Club '32

Chemistry Club '34

Here is a lad in whom one may find a most excellent friend. If you ever want any experiments or new ideas carried out, consult Ernest immediately and he'll be right there to the last explosion. He is interested in radio, and his greatest ambition is to make one run, be it ever so humble.



ANNA MARIE JUDGE

Health Club '34
P. A. D. Club '34

Chemistry Club '34
French Club '34

We shall always remember Anna for her sincere and faithful cooperation in every task she undertook. In the classroom, she has been a willing contributor to any discussion, sometimes, astounding us with her fluent and able command of the English language. Where did you find time to cultivate such a vocabulary, Anna?

In addition to being loyal to her class work, Anna has been a constant worker for the welfare of the P. A. D. Club.

You have the ability to succeed, Anna—go to it!

LAURENCE JUDGE, JR.

Senior Prom Committee Orchestra—Franklin High '32

It has been often stated that music can win a person's heart. This must be true in the case of "Larry", for he has gained many friends through his piano technique. At socials, we catch a glimpse of his flawless dancing. He is undecided about his future, but it will be studded with friendships as it was in C. H. S.



HENRY ARTHUR LOISELLE

Senior Prom Committee Baseball '32, '33
P. A. D. Club '34 Basketball '34

Football '31, '32, '33

Whenever we needed a short line buck, a floor goal, or a scoring hit, "Bob" came through. His consistent playing was outstanding, but, in the classroom, one would never know that he was around. In fact, he's a second Dr. Jekyll and Mr. Hyde.

We're sure you'll find success, "Bob", in whatever enterprise you attempt.



ELLEN MARIE LUNDSTROM

Health Club '34 Senior Prom Committee

We all feel glad to have known "Blondie". Skipping along with her chum, "Dot", she has covered many extra miles and enjoyed many a joke in C. H. S.

We hear that she has a delightful voice, although she has been rather reticent in singing for us. Why be bashful, Ellen? We appreciate good music.

We shall remember you as a faithful rooter for our athletic teams, a loyal classmate, and a conscientious student.



HELEN VIVIAN MACNEILL

Class Executive Committee '33, '34 French Club '33
Basketball '31, '32, '33 Glee Club '32
Year Book Staff '33 Health Club '34
Senior Play Committee

Four years have added both height and dignity to Helen. Occasionally, the giddiness of her freshman days peeped forth but she quickly suppressed it.

While here, Helen has acquired knowledge and skill for both her vocation and avocation.

Any business would appreciate a stenographer like her; and any basketball manager would be as reluctant as we are to release our dependable guard.



ROLAND McENANEY

P. A. D. Club '34 Chemistry Club '34
Senior Play

"He walks with dignity,
Giving counsel wise;
Speaks with deep authority
And steadfast eyes."

Folks, meet a very quiet, sensible young man. Ladies and gentlemen, listen to the counsel of Mr. Stubbins, the shrewd campaign manager in our Senior Play. "Bud" was most successful in his acting and his nomination of the "Judge".

His personality and friendliness have made him very popular among his classmates. He should score high in whatever he undertakes.





ALFRED MCSHEEHY

Baseball '33

Basketball '31, '32, '33, '34

P. A. D. Club '34

Booster Day Committee

Football '32

"I yam what I yam, and that's what I yam!"—says "Mac." How many times we have heard "Mac's voice raised in declamations over some topic of the day, only to hear it subside at some teacher's exasperated request. How he loves an argument!

When it comes to athletics, especially basketball, Alfred has applied himself earnestly and faithfully. For two years, he has been high scorer of the school's quintet.

May you succeed in your future as you have on the court and shoot the goal toward which you aim!



JULIA ROBERTA MIKULIS

P. A. D. Club '34

Chemistry Club '34

Health Club '34

Nature was extremely generous with Julia, both in appearance and manners. Somehow, she never loses her culture! deportment and becomes boisterous like some of us. Always quiet and unassuming, Julia has been faithful to her studies and her friends.

We hope that she remains, as we always have known her, gentle, modest, and genial.



BERNICE ARLENE MILLS

Senior Prom Committee

Booster Day Committee

Health Club '34

Someone once said, "In character, in manners, in all things, the supreme excellence is simplicity." Such are our sentiments of Bernice. During her four years at C. H. S., Bernice has accomplished her problems by her steady and faithful effort, and in her own quiet way, has assisted greatly in the various commercial projects which are always going on in Room 3.

May life be as kind and gentle to you as you have been to all!



MARY ELIZABETH MISKELL

Senior Prom Committee

Senior Day Committee

Class Treasurer '32, '33

Health Club '34

Mary is a girl of many accomplishments, especially vocal, in class. Also we appreciate the fact that we have a busy, efficient typist with us. In shorthand her fingers have been trained to work as rapidly as her mind.

Exit, Mary, to the world of business where your accomplishments will be appreciated.



JOSEPH PATRICK MUNGOVAN

P. A. D. Club '34

French Club '34

Where have we seen that grin before?—Nowhere! "Joey" possesses the one and only patent on it. As P. A. D. Judge, he has proven his abilities to his fellow students.

Order in the court, World! "Joey" Mungovan, you are sentenced to a life imprisonment of happiness and good fortune, cheering and helping those around you. Court adjourned!

DOROTHY ELIZABETH MURPHY

Health Club '34
Senior Prom Committee

Senior Play Committee

The people who are a pleasure to know are those with good natures, even dispositions, and cheerful words. Such a person is "Dot". Seldom, if ever, have we seen her in a dull mood. She has been an earnest worker for the class and a gracious friend to all.

"Dot" looks forward to continuing her competent work in the commercial world.



BARBARA JEAN NATH

P. A. D. Club '34
Glee Club '34
Chemistry Club '34

Health Club '34
Senior Play

Here is a girl of many talents. Often her stories and poems have increased the literary value of our "Blue Moon". We received a glimpse of "Barbie's" dramatic ability in the Senior Play, and regret that we had not the opportunity to enjoy it long before.

Her quiet spoken word and perfect manners assure us of success in her chosen profession.



CATHERINE NIEMASZYK

Health Club '34
Girls' Glee Club '34

"Kitty's" trade mark is her smile. If you should feel down and out and can't "grin and bear it," go to Kitty! she'll disperse your troubles. The sunny atmosphere of South Chelmsford is brought into school every day by "Kitty".

May you continue your cheerfulness in your future career.



BARBARA VARETTA OLSSON

Health Club '34
French Club '33

You can always count on Barbara for a cheerful smile or a friendly wave of the hand. She has a pleasant greeting for every one. The echoes of laughter from the locker room in the morning have often originated from Barbara's witticisms.

If kindness and good spirits are helpful to patients, we are certain Barbara will quickly aid those under her charge back to health.



HERBERT S. PAGE

Football '31, '32, '33
Basketball '32, '33, '34
Latin Club '32, '33, '34

French Club '33, '34
Chemistry Club '34

Remember that tall, lanky lad that stopped end runs with a low vicious tackle, or dropped long shots through the basket when most needed? That was "Dec". We don't know which to praise the more, his athletic ability, or his scholarly talents. The way in which he manages to always know his lessons insures his future at Lowell Textile.



Line 4



MARIE DOROTHY PARKS

Bank Trustee '33, '34
Health Club '34

Senior Prom Committee
Senior Play Committee

Whatever the weather may be, the sun is always shining when "Dot" is around. We have liked her cheerful and girlish way, and her readiness to do anyone a favor—especially for one in our midst.

All joking aside, "Dot" has been a good student and sincere worker. She is well qualified to be a dependable and efficient office clerk.

Keep smiling, "Dot", it will get you much further than a frown.



HELEN LOUISE PEVEY

Bank Trustee '33, Treasurer '34
Health Club, Vice President
Class Executive Committee '32, '34

Senior Play Committee
Booster Day Committee '32

Hand in hand with her pal, Claire, Helen has seemed to enjoy and profit by her four years of high school. Scholastically, she has excelled, and, as treasurer of the School Bank, fulfilled her duties most efficiently.

The future should hold no fears for this extremely able and unassuming miss—we can all bank on her success.



MARION JANET PLEIN

Inter-class Basketball '31, '33
Health Club '34

Chemistry Club '34
Glee Club '33, '34

A pleasant manner and a cheerful heart have made Marion a very dear friend to us all. When she first came to C. H. S. as a sophomore, she was very shy and reserved, but it didn't take long to outgrow that. First thing we knew, she could make as much noise as any of us.

However, Marion has been a steady worker, and ranks high as a commercial student. A few finishing touches at Commercial College will enable her to find a suitable position in the business world.

*Best wishes
to an ambitious
student of
C. H. S.
Success
to Ed's
Lovers
'34*



MILDRED LAURETTA PURCELL

Health Club '34

This year "Boots" has changed from a rollicking undergraduate to a sophisticated senior. Isn't it funny how time ages all of us?

Underneath her mischievous manner and carefree way, Mildred entertains some serious thoughts, one of which is a fond desire to become a school teacher. Best of luck to you, Mildred. We hope you enjoy 'the other side of the desk'!



BARBARA LOUISE PUTNAM

Senior Play Committee
Glee Club '32, '33, Librarian '34

Senior Prom Committee '34
Health Club '34

Alert of step, trim of figure, friendly in spirit is Barbara. She may appear quiet to the majority, but has plenty of humor which leaves its jovial traces in her wake.

She has already registered for training in the nursing profession. Her enthusiasm and determination should enable her to win the confidence and admiration of those under her care, as well as her superiors.

*Barbara
and her
'34*

EDITH MAE SARGENT

Health Club '34

P. A. D. Club '34

Edith is the "petite" blonde who intends to take up training at Lowell General Hospital. We can picture her silently moving here and there among the patients, administering help with a kind word and smile to all. You have the good wishes of C. H. S., Edith.



MARY LEA SCOBIE

Senior Prom Committee

P. A. D. Club '34

Senior Play Committee

Glee Club '33

Health Club '34

A complexion that reminds one of peaches and cream is the object of many envious glances wherever Mary appears.

Mary has been a decided help to the senior class, having served on its Prom Committee, Play Committee, and various other activities.

Although we do not know what Mary plans to do when she leaves us, we know that whatever she attempts she will do well.



ADALINE AMELIA SIMPSON

P. A. D. Club '34

Chemistry Club '34

Senior Play

Latin Club '33

Health Club '34

Senior Prom Committee

When the darkest days of winter enveloped C. H. S., we always found this young lady radiating a mid-summer smile. Adaline has been a faithful worker for the class since her freshman days. We discovered, after four years, that she possesses unusual dramatic ability which she displayed in the Senior Play as "Mrs. Hardy".

We wish you the same luck in the management of your future, Adaline, that you evinced with your "family" in the Senior Play.



MARJORY VIOLA SLADE

Health Club '34

Senior Prom Committee

Chemistry Club '34

A cheery blonde and a good sport—that's Marjory. For four years C. H. S. has enjoyed her company. Always in good spirits and intent in doing the right thing, she has fewer reprimands to recall than most of us.

Marjory has chosen pedagogy for her life work and plans to enter Lowell Teachers College. The brightest of futures to you!



LOUIS WAITE STEARNS

Chemistry Club, President '34

Radio Club '32

Orchestra '34

Prize in Booster Day Parade '32

Latin Club '32, '33, '34

Stamp Club '32

When the long and short assemble at C. H. S., one may find our friend, Louis, towering at least 3 inches above the rest of us. He is known to all of us as a musician. The "Chemistry Club" is proud to own him as its President, for he worked tirelessly for the success of this club.

Everyone will miss you after you leave us, but, even the best of friends must part.





HELEN GRACE STEPHENS

Latin Club '32, '33
Glee Club '32, '33

Health Club '34
Chemistry Club '34

If you ever have any difficulty in French, you'll find no better information bureau than Helen.

The atmosphere is always cheery when she is around. Her motto is: "If anything must be done, then 't were well it were done quickly", and with that incentive we know she will surely succeed as a full-pledged school teacher. Au revoir!



MONICA TODD

Health Club '34 Secretary
French Club '33 Treasurer '34
Chemistry '34 Secretary

Senior Prom Committee
Senior Play '34
Glee Club '31, '32

We all aspire to be individual; yet few of us reach attainment. However, Monica is the exception. She has always distinguished herself by doing everything she undertakes a bit better than anyone else. Since freshman days, Monica has known her goal and has worked toward it. Not—"Like father, like son"—but, "like daughter", she plans to learn her father's business, mechanical dentistry.



NAPOLEON JOSEPH VALENTINE

Orchestra '32, '33, '34

Senior Prom Committee

Napoleon is one of the few of us who has both practical and artistic abilities. His work in the commercial department has been most efficient.

Unlike other members of the class, he is blessed with rare musical talent. In his four years of High School, he has established himself as an expert in this field.

We hope Napoleon will be able to play his way through the world, conquering both fortune and misfortune as did his namesake.

Undergraduates

The drudge may fret and tinker
Or labor with dusty blows,
But back of him stands the Thinker,
The clear-eyed man who Knows;
For into each plow or sabre,
Each piece and part and whole,
Must go the brains of Labor,
Which gives the work a soul!

Berton Braley



Undergraduates



Junior Class

Abbott, Marjorie
 Annis, Barbara
 Barris, Paul
 Batchelder, John
 Bell, Evelyn
 Bennett, Louis
 Bickford, Glendys
 Borodawka, Jennie
 Borrowes, Celeste
 Bowers, Sylvia
 Brennan, Madeline
 Brown, Janice
 Burns, Harlan
 Capuano, Ralph
 Coburn, Alfred
 Devine, Mary
 Dirrubbo, Nicholas
 Dutton, Robert
 Ferron, Rita
 Finch, Ralph
 Fish, Louise
 Gauthier, Gladys
 Gorton, Thelma
 Haithwaite, George
 Hamilton, Esabelle
 Hannaford, Frank

Harvey, Muriel
 Hill, Kenneth
 Hindman, Harold
 Hoelzel, Norman
 Holt, Marshall
 Hulslander, Donald
 Jamros, Lulack
 Kennedy, Gertrude
 Kennedy, Joseph
 Kirk, Ellen
 Krasnecky, Fanny
 Lane, Helen
 Lantagne, Margaret
 Lebedzinski, Carl
 Leman, Louise
 Loiselle, Irene
 Loving, Marjorie
 MacLaughlin, Leona
 MacLean, Donald
 Marinel, Joyce
 Marinel, Thelma
 McAulay, Archie
 McEnaney, Mona
 McMahan, Esther
 McQuade, Helen
 Mills, William F.
 Murphy, Rita

Nelson, Louise
 Olsen, Everett
 Pardoe, Ruth
 Pelton, Ruth
 Peterson, Eric
 Petterson, Harold
 Pierro, Rokeen
 Rafferty, Donald
 Robinson, James
 Russell, Doris
 Sargent, Herbert
 Savage, Eleanor
 Savage, Katherine
 Simard, Estelle
 Smith, William
 Stearns, Genevieve
 Sugden, Thomas
 Sullivan, Pauline
 Tompkin, Mary
 Totman, Margaret
 Trask, Eleanor
 Wallis, Gwendolyn
 Welch, Phyllis
 Winters, Margaret
 Wright, Stanley
 Zabierek, Thaddeus

*Best of Luck to the Sophomores
to be and also to the quiet
little Sophomores who sat beside
the girls in the course* 1936



Sophomore Class

Abrahamson, George
 Angus, Margaret
 Bachelder, Carole
 Bachelder, Yvonne
 Barris, Charlotte
 Bartlett, Adeline
 Belida, Alexander
 Belleville, James
 Bennett, Rita
 Berubee, Norma
 Bettencourt, Ralph
 Blodgett, June
 Bloomgren, Arthur
 Bockes, Patricia
 Bomal, Stella
 Bowen, Lois
 Brooks, June
 Buchanan, Priscilla
 Byam, Arthur
 Cameron, Bessie
 Caton, Priscilla
 Clark, Jane
 Clough, Horace
 Crawford, Yvonne
 Davis, Edwin
 Dean, John
 Dearborn, Whitney
 DeLong, William
 Dexter, Lillian

Fish, Marguerite
 Foye, Emma
 Gauthier, Emile
 Gorham, Althea
 Greska, Aldona
 Hamilton, Andrew
 Harvey, Claude
 Hehir, Mildred
 Hitchcock, Marietta
 Hoelzel, Arline
 Howard, Violet
 Hulick, Jennie
 Jenkinson, Florence
 Johnson, Eric
 Johnson, Margaret
 Johnston, Dorothy
 Kidder, Esther
 Kisiolik, Julia
 Koulas, Stanley
 Larkin, Marguerite
 Long, Rita
 Marshall, Howard
 McCormick, John
 McGovern, William
 McSheehy, John
 Millett, Arlene
 Millman, Frederick
 Miskell, Thomas
 Molloy, Virginia

Mourad, Helen
 Mourad, Wilma
 Murphy, Daniel
 Nath, Elizabeth
 Nichols, Natalie
 O'Brien, Anella
 O'Donnell, Mary
 Pascall, Phyllis
 Patenaude, Arnold
 Picken, Robert
 Pihl, Wilfred
 Plein, Josephine
 Priest, Dolores
 Putnam, Dorothy
 Reid, John
 Rockwell, Florence
 Shaw, Mary
 Shugrue, Charles
 Siegale, Dorothy
 Simpson, Charles
 Sleeper, Nedra
 Smith, Dexter
 Stephens, Esther
 Sturtevant, Harriet
 Tisdale, Arthur
 Trubey, Walter
 Wacome, Stanley
 Wrigley, Eileen
 Zabierek, Julian

To a Latin student
who will always
hit the top
Betty O. '37

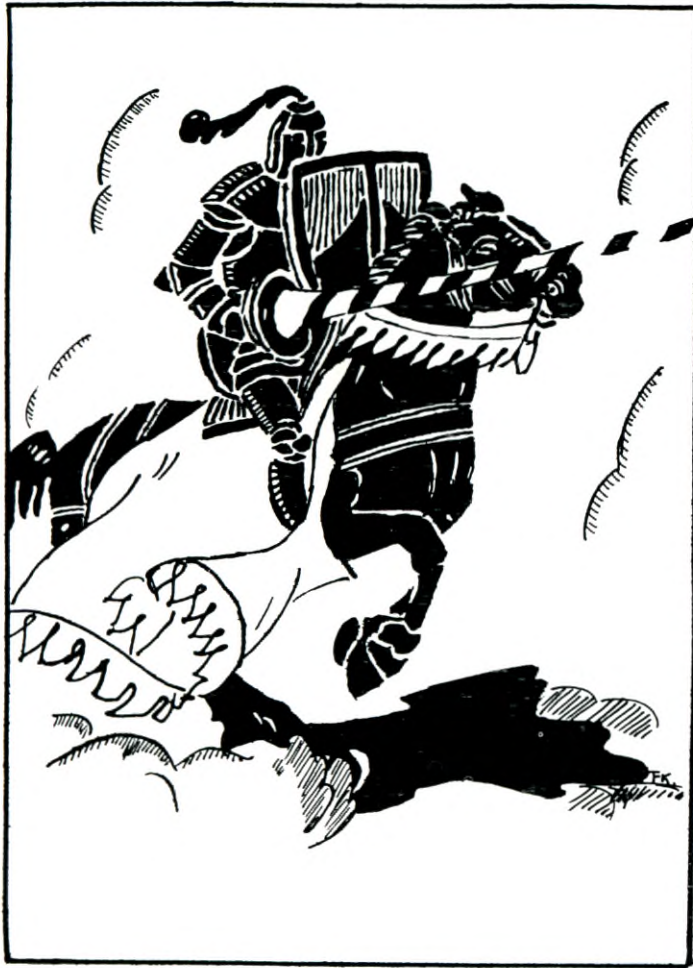
Success to my best pal from
So. Cal. May you always
be on the top step of
the ladder of success.
Cunice '37"

I hold no dream of fortune vast
Nor seek undying fame.
I do not ask when life is past
That many know my name.

I may not own the skill to rise
To glory's topmost height,
Nor win a place among the wise,
But I can keep the right.

And I can live my life on earth
Contented to the end,
If but a few shall know my worth
And proudly call me friend.

Edgar A. Guest



Athletics



Boys' Basket Ball

Chelmsford high school's basketball squad consisting of the usual number, fifteen in all, launched its campaign in late December when the schedule called the C. H. S. Alumni stars to furnish the opposition. The grads had a great team and played fine basketball, but were forced into defeat (28-26) by a younger and faster moving high school quintet. Was this to be the start of a winning team?

The winter wore on. Victories and defeats were inter-woven throughout the entire season. At times the boys played top-notch basketball combining a fast-breaking offensive game with an impregnable defense. Then there were occasions when the boys seemed temperamentally over-powered. They did not play the game in the style they had previously shown. Just what the trouble was no one seemed to know. At any rate the team played spasmodically.

In the total points scored the Chelmsford opponents led only by a margin of eight. Warren Freeman was captain of the team. Alfred McSheehy was high point scorer. George Dixon, Herbert Page, Allen Fletcher and Marshall Holt were other regulars.

The boys basketball record was as follows:

Dec. 19	Chelmsford	28	Alumni	26	Feb. 12	Chelmsford	13	Billerica	15
Jan. 5	"	13	Milford, N. H.	30	13	"	33	Methuen	17
9	"	18	Littleton	19	15	"	22	Acton	27
12	"	18	Acton	25	Mar. 1	"	22	Groton	24
17	"	23	Methuen	11	2	"	17	Ayer	22
19	"	11	Dover	8	7	"	8	Hollis, N. H.	5
26	"	19	No. Andover	21	9	"	22	Billerica	15
30	"	23	Hollis, N. H.	17	14	"	18	No. Andover	22
Feb. 3	"	28	Milford, N. H.	24	19	"	18	Littleton	22
7	"	13	Dover	25					

Best of luck
to a girl who is a
sweetie.

M. Fick '31

Here's to a popular student of the H.S. Hope you enjoy your future years as much as I have. Best of luck!
Laurie '35

THE COURANT



Girls' Basket Ball

And who might these smiling young ladies be? Don't you see what it says on the ball? For that's just what they are—League Champions. What a season this one was—game after game piling up our score, furthering our hopes of the championship; evening after evening of heart-breaking suspense; and then that last play-off with Johnson, with its repeatedly tied score and its hard-fought dénouement. Our girls may well be pleased and proud of the work they did. A championship isn't made overnight, nor over a week. It takes many days of monotonous hard work, and our girls certainly proved they had the stuff to stick to it and win.

To the coaches, Miss Dorothy Gay and Miss Mildred Wells, must be given the credit due successful trainers. Their inspiration and unflinching interest in each and every member of the team are acknowledged and appreciated by the team as well as the school.

Under their leadership and with the inspired remaining nucleus determined to retain the hard-won trophy, we expect the title to have a long sojourn in our midst.

The following is the record of the team:

Dec. 19	Chelmsford	19	Alumnae	16	Feb. 12	Chelmsford	18	Howe	16
Jan. 5	"	13	Milford, N. H.	23	15	"	15	Acton	14
9	"	30	Littleton	8	Mar. 7	"	18	Hollis, N. H.	25
12	"	33	Acton	15	9	"	17	Billerica	13
26	"	26	No. Andover	24	14	"	15	No. Andover	17
30	"	33	Hollis, N. H.	13	19	"	38	Littleton	18
Feb. 3	"	24	Milford, N. H.	22	21	"	25	No. Andover	23



Baseball

Our school always turns out a winning baseball team which is loyally supported by everyone. Unquestionably, this patronage is attributed to Coach Knightly, who knows his baseball and has developed a baseball-consciousness in us all. By hard work and persistent training, Coach Knightly has rounded-out a squad roster of the best array of diamond stars since the spring of 1931, when Captain Don Lupien and his mates won fourteen of a sixteen game schedule.

Allen Fletcher, mound ace last season, a senior and top-notch hurler in the current campaign, was elected early in the year to lead the baseball team, which is composed almost completely of veterans, into the stiffest schedule on record. "Sammy", as Fletcher is called by his pals, led his team to a victory in the opening game of the season by shutting out a strong delegation from Methuen High School in a 2 to 0 contest.

In the Chelmsford infield, guarding first base, is Frank Byam, a tall rangy target and sure-fire hitter. Frank is a graduating, first season player. For two years the slick-fielding Weldon Haire, dimunitive lead-off man, has cavorted around the keystone sack, making all kinds of seemingly impossible stops. Many times has "Rabbit" Haire opened an inning by singling, later to score on a drive by the slugging Byam. Weldon accepts the sheepskin this June.

There are many undergraduates on the squad who we hope will be with us another year. Our schedule and record to date is as follows:

April 25	Chelmsford	2	Methuen	0	May 24	Chelmsford	7	Billerica	3
27	"	7	Acton	5	28	"	5	Littleton	7
May 2	"	20	Littleton	4	29	"	8	Westford	2
4	"	8	Billerica	7	June 1	"		Wilmington	
8	"	1	Methuen	2	5	"		Acton	
11	"	10	Westford	2	8	"		Andover	
18	"	7	Andover	2	12	"		North Andover	
22	"	12	North Andover	7	13	"		Wilmington	



Chelmsford High School Athletic Association

Chelmsford High School Athletic Association

The most popular of all organizations at Chelmsford High School is our Athletic Association. The association boasts of a higher percentage of pupil membership than any other single unit in the school. Every student in school is eligible to membership in the Athletic Association. A monthly fee of fifteen cents during the school year entitles each member to all the association's privileges, including season passes to all home athletic contests. Aside from this, each paid-up pupil has the opportunity to participate in varsity or interclass sports in addition to full voting power at all group meetings.

The purpose of the Athletic Association is to promote and maintain all athletic contests in which our school is represented. An executive board composed of class representatives and organization officers is elected each year. Membership on this board is most desirable as it gives a pupil a chance to serve the school and student body in a most worth while way. This board has functioned excellently this year, opening the season with the best Booster Day the school has ever had and closing the year with a banquet which will long be remembered.

The Athletic Association owes its success to the capable and untiring supervision of faculty manager Morris L. Budnick. Through his keenness and perseverance, with the cooperation of the coaches, principal, teachers, and pupils, the organization has continuously grown and prospered.

The Athletic Association extends to the graduates of 1934 sincere thanks for their kind patronage and to all the pupils who will return in the fall a hearty welcome to reenroll or join its ranks—let's cultivate what is known as "The Chelmsford Spirit", by joining the Athletic Association.

AWARDS

At the annual banquet held in June letters were awarded the following:

Girls' Basket Ball: Captain Blanche Clough, Evelyn Beckvold, Evelyn Flemings, Emma Foye, Muriel Harvey, Esther Kidder, Helen MacNeill, Esther Stephens, Eileen Wrigley, and Manager Claire Molloy.

Boys' Basket Ball: Captain Warren Freeman, George Dixon, Marshall Holt, Alfred McSheehy, Herbert Page, and Manager Raymond Ducharme.

Football: Captain Ralph House, George Dixon, Charles Donaldson, Robert Donaldson, Allen Fletcher, Paul Finnegan, Warren Freeman, Raymond Hansen, Marshall Holt, Henry Loiselle, Frederick Millman, Herbert Page, and Manager Weldon Haire.

Baseball: Captain Allen Fletcher, James Belleville, Frank Byam, Weldon Haire, Marshall Holt, William McGovern, Frederick Miliman, Eric Peterson, Harold Petterson, Stanley Wacome, and Manager Warren Freeman.



Activities



French Club

<i>President</i>	JOYCE MARINEL
<i>Vice-President</i>	GLADYS GAUTHIER
<i>Secretary</i>	MARY ANGUS
<i>Treasurer</i>	EVELYN FLEMINGS
<i>Faculty Adviser</i>	MISS DOROTHY GAY

The French Club, or as it is known among its members, "Les Jeunes Francais", is conducted for the express purpose of creating a knowledge of French customs and peculiarities through a more pleasant medium than the text book.

Its members carry on proceedings in French, whenever possible, and by the process of thinking in French greatly increase their vocabulary and understanding.

Much credit is due to the Faculty Adviser, Miss Gay, for her constant efforts to promote the efficiency of the Club, as well as for her patience in correcting and supplying the none too fluent French of the participants. A club of this sort can add tremendously to the interest of a subject, and it seems to be functioning in just this manner.

"Tres bien, Les Jeunes Francais."



Latin Club

Consul, EVELYN FLEMINGS

Aedile, HOWARD MARSHALL

Consul, EMILE GAUTHIER

Aedile, JOHN REID

Quaestor, NORMAN HOELZEL

Aedile, GLADYS GAUTHIER

Aedile, HERBERT PAGE

Faculty Adviser, F. CHRISTINE BOOTH

Latin may be a "dead language", but there is nothing lifeless about our "Romani Hodierni". Under the energetic and competent supervision of Miss Booth and the able direction of its officers, a practical working knowledge of Latin is purveyed at its meetings.

In spite of the tendency to consider Latin as an outworn subject, it is still the language of the intellectual and perforce, of the scientist and historian. Latin is one of the basic languages for our own tongue, and a thorough knowledge of it greatly increases the English vocabulary.

It is indeed gratifying to note that there are students in high school who still show their appreciation for the old culture that was Rome, and their efforts are not in vain. Underlying the pleasantries and humor of the Latin Club meetings, there is being laid the foundation of an appreciation of the classics, that mark of distinction which denotes the true intellectual—"Multos annos et bonas horas, Romani Hodierni".



Glee Club

- President*—RITA FERRON
Vice-President—FRANCES KRASNECKIE
Librarian—BARBARA PUTNAM
Ass't Librarian—ELIZABETH NATH
Supervisor—MISS CHARLOTTE L. HYDE

- | | | |
|---------------|----------------|---------------|
| ALCORN, E. | HOUSE, E. | MCQUADE, H. |
| ABBOTT, M. | HINES, V. | NATH, E. |
| BOWEN, L. | KIRK, E. | NATH, B. |
| DEPUTAT, B. | KRASNECKIE, F. | NIEMASZYK, C. |
| DEXTER, L. | LAMBERT, M. | PLEIN, M. |
| FERRON, R. | MOLLOY, V. | PUTNAM, B. |
| GAUTHIER, G. | MARINEL, J. | PASCALL, P. |
| HEHIR, M. | MOURAD, H. | STEPHENS, H. |
| HANNAFORD, M. | MOURAD, W. | |

Composed of those who are gathered by the common urge of vocal music, the Glee Club spends many happy hours under the direction of Miss Hyde.

The lost art of choral singing is still being maintained through this medium. Their reward is derived from the pleasure occasioned through this simple form of entertainment and it will last far into the future.



The Orchestra

GEORGE ABRAHAMSON—*Violin*
 HAROLD HINDMAN—*Clarinet*
 JOYCE MARINEL—*Piano*
 FRED MILLS—*Trumpet*
 ELIZABETH NATH—*Violin*
 ALBERTON OLSEN—*Clarinet*

EVERETT OLSEN—*Trombone*
 ROBERT PICKEN—*Trumpet*
 DOROTHY PUTNAM—*Violin*
 LOUIS STEARNS—*Baritone*
 STANLEY WRIGHT—*Trumpet*
 NAPOLEON VALENTINE—*Violin*

MISS CHARLOTTE HYDE—*Supervisor*

One of the most beautiful forms of human art is music, and C. H. S. is to be congratulated in possessing a tangible manifestation of this culture—our orchestra.

This group of music lovers, led by their competent conductor, Miss Charlotte Hyde, has met in Room 10 every Wednesday afternoon for hard and conscientious study. This period not only enables our young musicians to become more skilled, but also to earn credits toward graduation.

Our orchestra has made several public appearances, both at our assemblies and at evening performances. In fact, such events as the Senior Play and Graduation would scarcely be complete without the support of these young people. It is to be regretted by all of us that the facilities for the assembling of the student body are so inadequate. This situation deprives us of many advantages, among which are more frequent presentations by our orchestra and glee club.

However, let us appreciate what we do have and feel grateful for the enjoyment which our orchestra has afforded us. May it ever have a permanent place in our school curriculum!



Bank Trustees

President—CLAIRE MOLLOY

Treasurer—HELEN PEVEY

Senior Tellers

PHYLLIS BERUBEE

DOROTHY PARKS

Junior Tellers

RITA FERRON

LEONA MACLAUGHLIN

HELEN MCQUADE

RUTH PARDOE

Faculty Adviser—C. EDITH MCCARTHY

The "New Deal" has cast its ray of optimism on the Chelmsford High School Savings System. To be sure, the trustees have not accepted any code; yet they have been successful in increasing the number of depositors, as well as the amount of the weekly deposits. It must be that the times warrant the return of the ever-substantial habit of constant and steady saving.

The trustees, who are appointed because of their good standing in citizenship and scholarship, have been most faithful and efficient in recording and managing the affairs of the bank. The majority of work has to be completed by the president and treasurer, who have fulfilled their positions most competently.

It is the sincere hope of the trustees and the faculty adviser, Miss McCarthy, that the future students of C. H. S. will avail themselves of the accommodations which our saving system offers. Every pupil, who could do so, would greatly profit by depositing a small sum every week from his freshman to his senior year. In this way he would, in addition to establishing the habit of systematic saving, have set aside money which would greatly help to pay his expenses at graduation time.



"Skidding"

facts to a sophomore to be
 stops we are to gether mat
 your
 Great studies
 But we



we've had study period together but
 I don't know you very well.
 Success to you as a Sopho-
 more!
 Gladly. Gaudin's

Q is for quiz which we've all had;
Some of them good and some of them bad.

R is for Righteousness, a good motto to choose;
Those who will abide by its meaning never will lose.

S is for Sargent, quiet but smart;
In the business world she has a fine start.

S is for Scobie, a young miss from East;
May her happy-go-lucky ways never cease.

S is for Simpson, the Judge's fair wife;
She cared for the family through sorrow and strife.

S is for Slade; able is she;
A shining success she aims to be.

S is for Stearns, who can work and can play;
In music and life—he'll make a name some day.

S is for Stephens, in work she finds pleasure;
Every fact that she learns is part of her treasure.

T is for Toddie, who knows all the rules;
Great credit she'll reflect to herself and our school.

U is for ultra—ultra special are we,
In all which we do and aspire to be.

V is for Valentine, who plays on the fiddle;
No music to him is ever a riddle.

W is for Wisdom for which we have fought.

X is for X-tra, this book has a lot.

Y is for You, whether you like it or not.

Z is for Zealous, '34 to a dot.

*Best of luck to one
of the biggest treatments
I know, and a happy
successor of P.M. is Coaris*

*Wishing you luck
and success
forever.
Gita Quinn*

*Best of Luck
to a smart sophomore
to be and a station gains
Ellen Kirk*

Lots of
luck to a
very smart
soph to be
Shirley Johnson

Good luck to you who deserve it
Kathleen Johnson.
P.S. Send me your address

THE COURANT

Best of luck to
a smart freshman
C. Angus

Autographs

The great choir
Singer. 1804
And you so sincere
And the night in your
life as the night of
D. Lewis.

Best of luck to a
freshman, I believe you must be a
sophomore
C. Kelley

May you succeed
as a sophomore
C. Kelley

Lots of Luck
From a Freshy
(Sug Coat Annie)
D. Davis.

A quiet smart
girl who thinks
a lot. "Davis Joste"
'37

Best of luck to
C. H. G. S. S. S.
P. M. S. S. S.

Best Luck
with you in a
small girl
131

Autographs

Best of Luck
and keeps up
your good work
'Blondie'
L. Carr '87

Best of Luck and Success
To a REAL CHAMP OF MINE.
"M. H. C."
Shirley M. M. M.

Remember the fun in Latin.
Hope Fielding
"37"

Heres to a smart freshman pal
of mine. How could I ever get along
without you.
Your Pal.
Lotta Archibald

Good luck
to a Latin shark
"Jansie"

It was a little
But it carries dear friends with you
For happiness and of love wishes
Cubie Turrell
Gave up though

Loads of
luck, Edith.
Hope you're still
with me next
year. Dotie Clark '37

Best of luck as
a Sophomore next year
J. Calder '37"

THE COURANT

Autographs

Best wishes to all soph. to be
keep up the good work
started this year.
Killey '37

Best of luck - to a
very smart girl! ~~Best!~~
up the "Buff" work!
"Buff" Graham

Lot's of luck to the
smartest freshman, the nicest
girl, and a good pal.
Betty Johnson '37

Don't make
as mistakes.
as Winkie!

Remember me
Pauline Lundberg

w of ch. o
a picture of h.
L. L. Rowland

Think of me
always as your
pal, Jean Kisley

Best of luck as
Soph. Choulton

Best of luck
to all soph. girls.
H. Jordan

"Luck and Success"
in your Sophomore year at CHS
Mary Devine '35

Lots of luck.
Ethel Leedberg

The very best of luck,
Pat Bocher '36

Best of luck to
a smart freshman
from Room 10.
Helen M. Fadden

Best of luck in
your future years
at C. H. S.
Shirley
Butterfield

Love many
Trust few
Always jaddll
your own canoe
Lillian Rich
"37"

Best of luck
to a pal from
Room 10.
Mildred
Burton

Here's to my old pal
remember her.
Flo '37"

Wishing a bright
Latin student all the
luck in the world.
"Ginnie Stearns"

How's tricks?
Edith?

Wish you the
best of luck in the
future. Bertie M. Gully

Trade
of Luck as
Soph. Vain't
Good Pes 7
Tule. & Thursdays.
"Red" Hamilton

Lands of Luck
to a great pal.
I hope I see
you next year
"Out" 37

to a cute girl
from Jan 12.
Best of Luck
as a "Sophie"
37 Anna Mello

Best wishes in
the future - Edith
Kepon with the a's
Bessie Tassie's

Best wishes
through the
year

Push T. Vain't
"38"

Here's for a
Luncheon. Willie 27 17
Ouch. My Luncheon

"Sally" Thomas