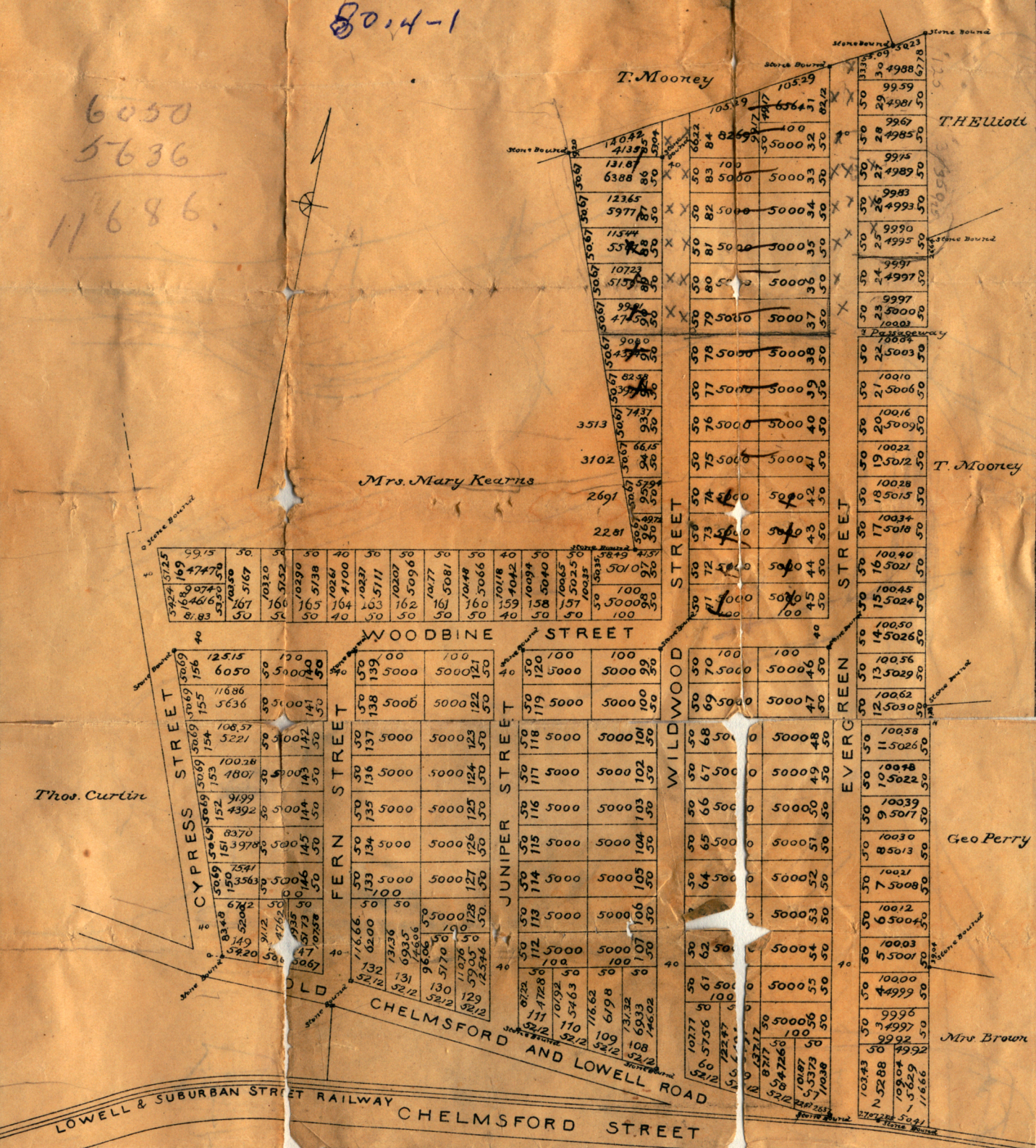


80.4-1

6050
5636

11686



BUILDING LOTS
AT
THE WESTLANDS,
Chelmsford, Mass.

BELONGING TO
HENRY S. PERHAM.

Scale 200 Feet to an inch.

Surveyed April 1896
Smith and Brooks, Civil Engineers,
26 Hildroth Building, Lowell, Mass.

1896