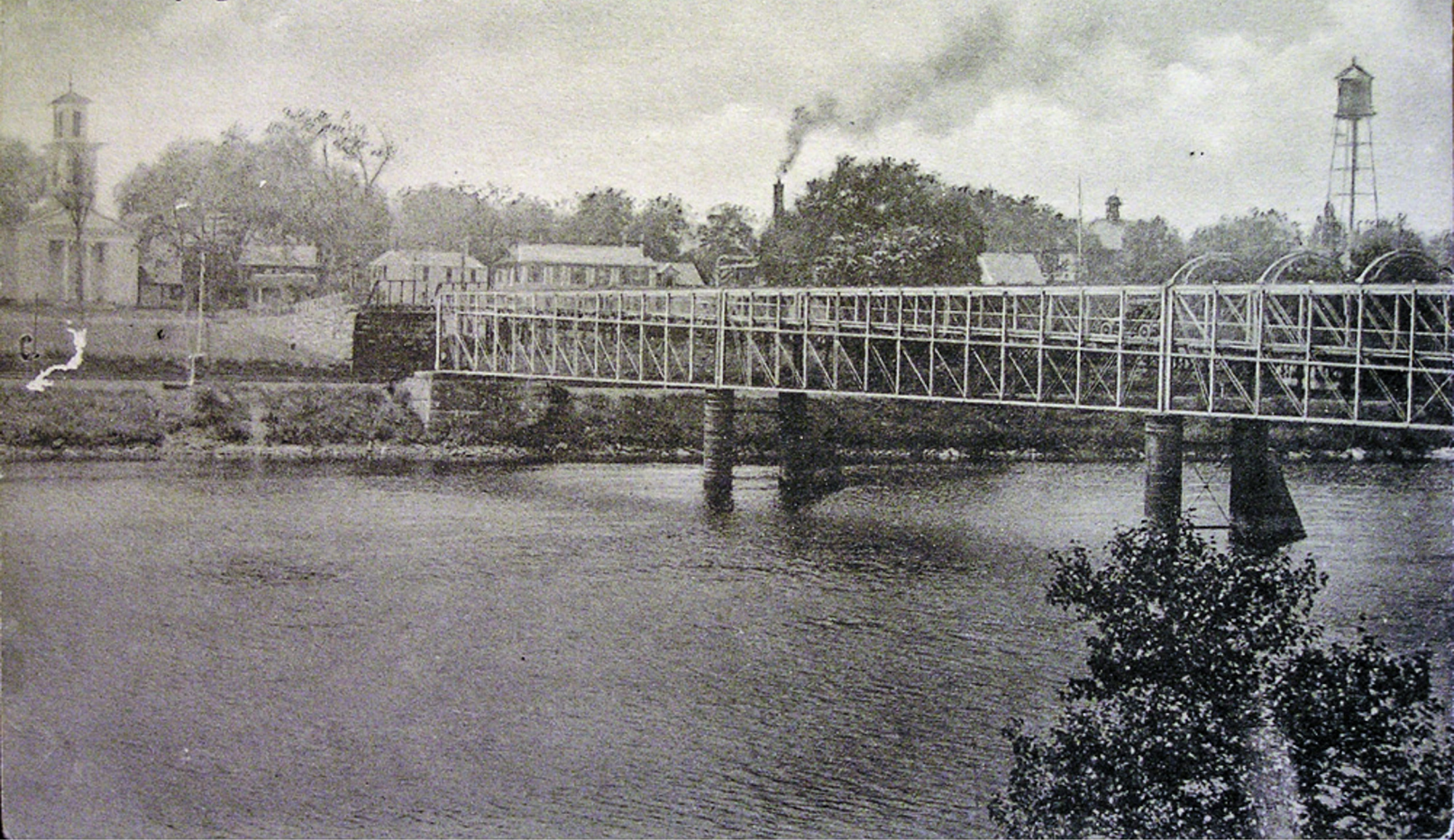




**Looking south-west toward the Brinley House in Tyngsboro.
The ferryman is Ayers Butterfield.
The carriage is owned by Dr. Charles Dutton.
George Danforth and Charles Dutton are standing on the Ferry.
The photo was taken in 1870 (before the "Iron Bridge" was built).
This information was given to the Lowell Courier-Citizen
by Dr. Dutton, and published with the picture on March 10, 1909.**

Picture courtesy of George Merrill, information from Jane Drury

Tyngsboro Bridge, Tyngsboro, Mass.



“The Old Iron Bridge”

1. Opened to the public in 1874
2. Originally intended to set on granite piers
3. Pilings had to be sunk because of the quicksand
4. Arches had to be added in 1893
5. A sidewalk was added in 1915
6. When it became shaky and weak a 10mph speed limit was set
7. It crossed the Merrimack until 1932
8. Ben Lawrence was the first and last person to cross the bridge


Information courtesy of Dennis Ready from his “Landmark of the Week” radio feature

Postcard courtesy of Paul Pettazoni

Tyngsboro Bridge

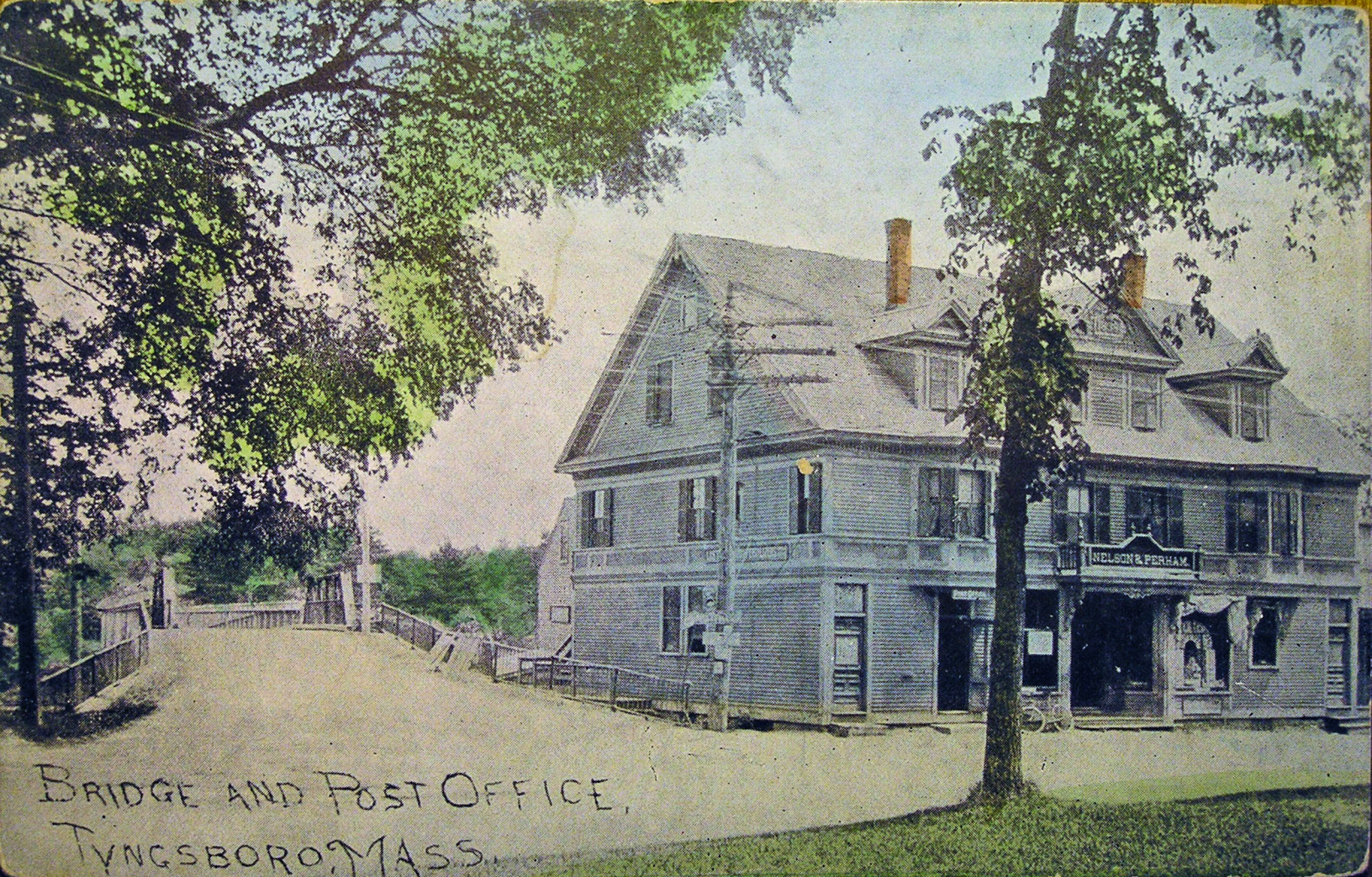


Postcard courtesy of Paul Pettazoni



BRIDGE ACROSS
MERRIMACK,
LYNGSBORO MASS.

Postcard courtesy of Paul Pettazoni



BRIDGE AND POST OFFICE,
TYNGSBORO, MASS.

LOWELL, MASS. TYNGSBORO BRIDGE AND CURVE



Postcard courtesy of Paul Pettazoni

**"New" Tyngsboro Bridge. Year Built: 1930, Reconstructed: 1975, Structure Length: 172.5 m
(Bridge data from National Bridge Inventory Database)**

Tyngsboro Bridge over the Beautiful Merrimack River between Lowell, Mass. and Nashua, N. H.



Postcard courtesy of Paul Pettazoni



Tyngsboro Bridge

2/23/2005 F. Merriam



Tyngsboro Bridge at 75 - Ready for an extreme makeover

2/23/2005 F. Merriam



Tyngsboro Bridge showing its age

2/23/2005 F. Merriam

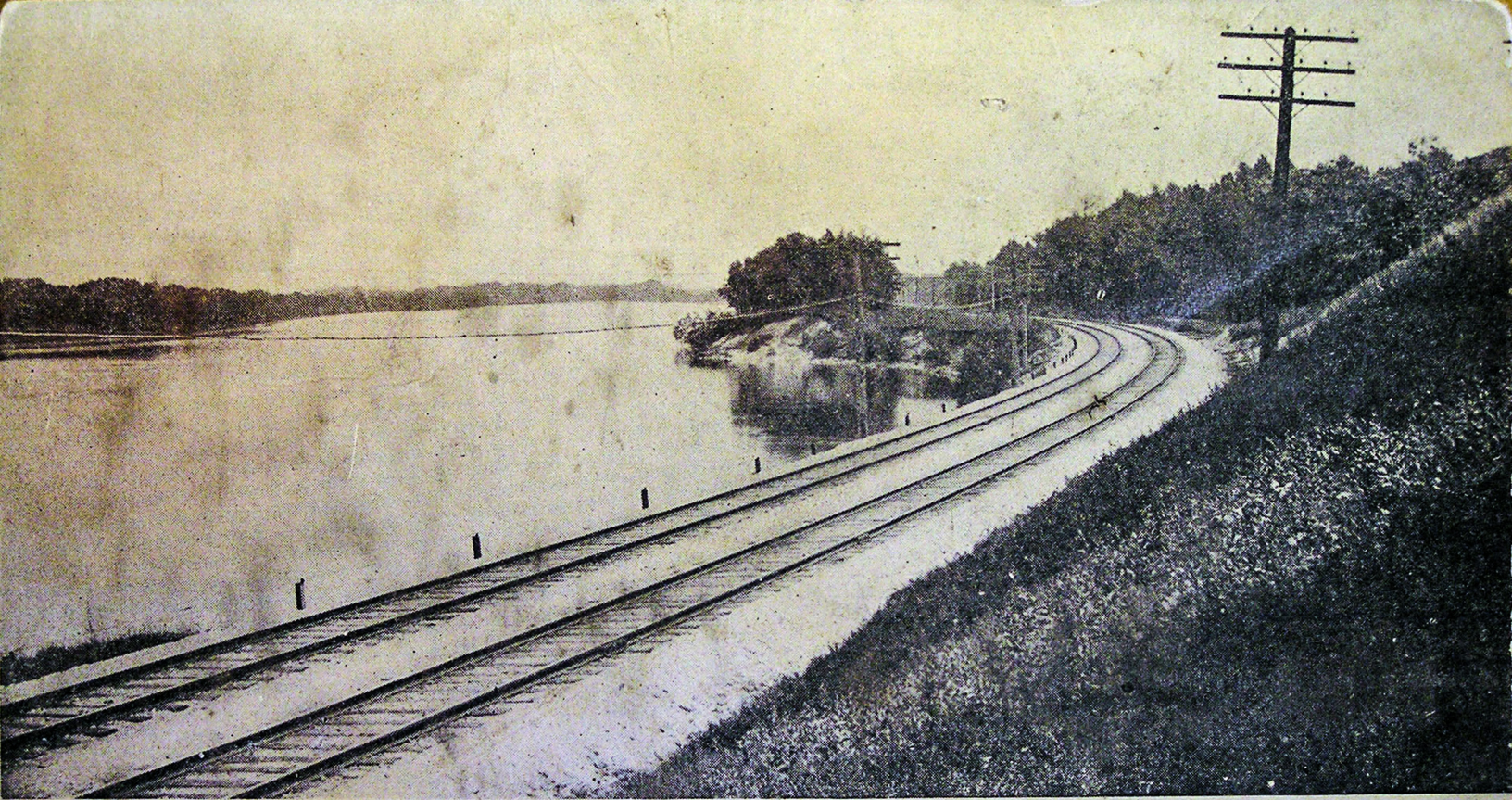


VIEW FROM BRIDGE LOOKING SOUTH TYNGSBORO, MASS.

B & M, RAILROAD STATION,
TYNGSBORO, MASS



Postcard courtesy of Paul Pettazoni



Railroad Curve on Merrimac River, No. Chelmsford, Mass.

Published by Chas. F. Scribner

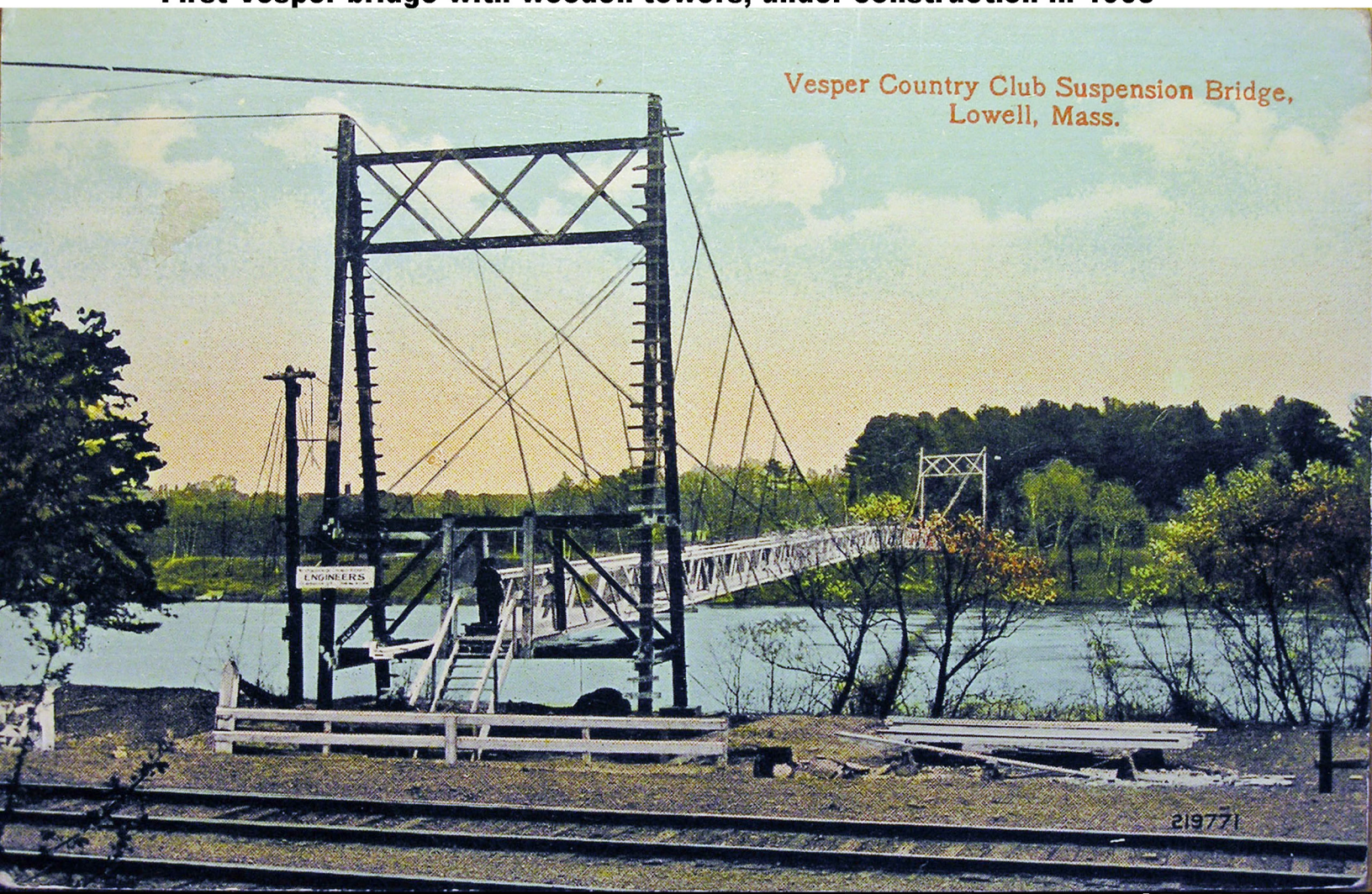


3.25 Miles out of North Chelmdford Depot

Photo courtesy of Bill Drury

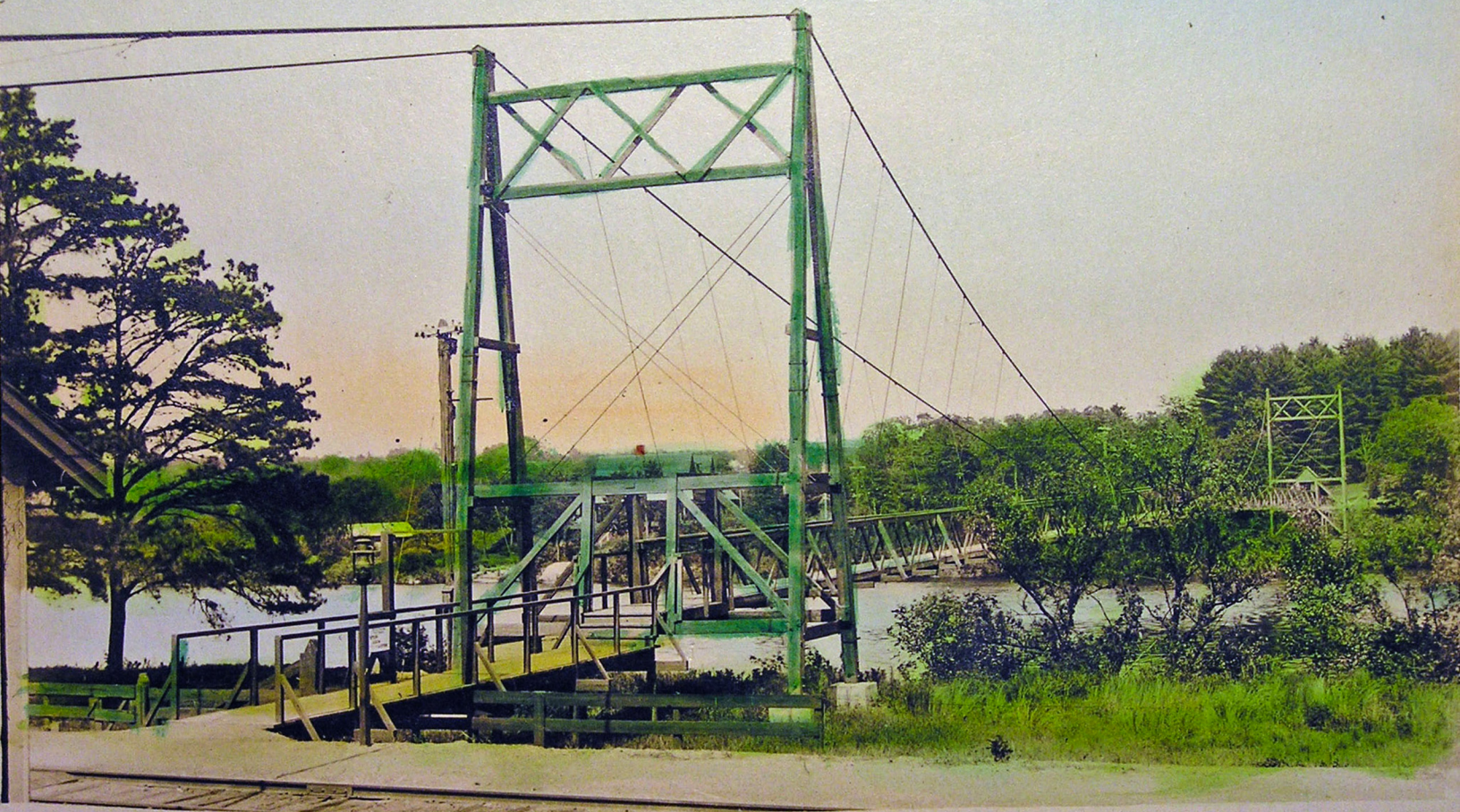
First Vesper bridge with wooden towers, under construction in 1908

Vesper Country Club Suspension Bridge,
Lowell, Mass.



Postcard courtesy of Paul Pettazoni

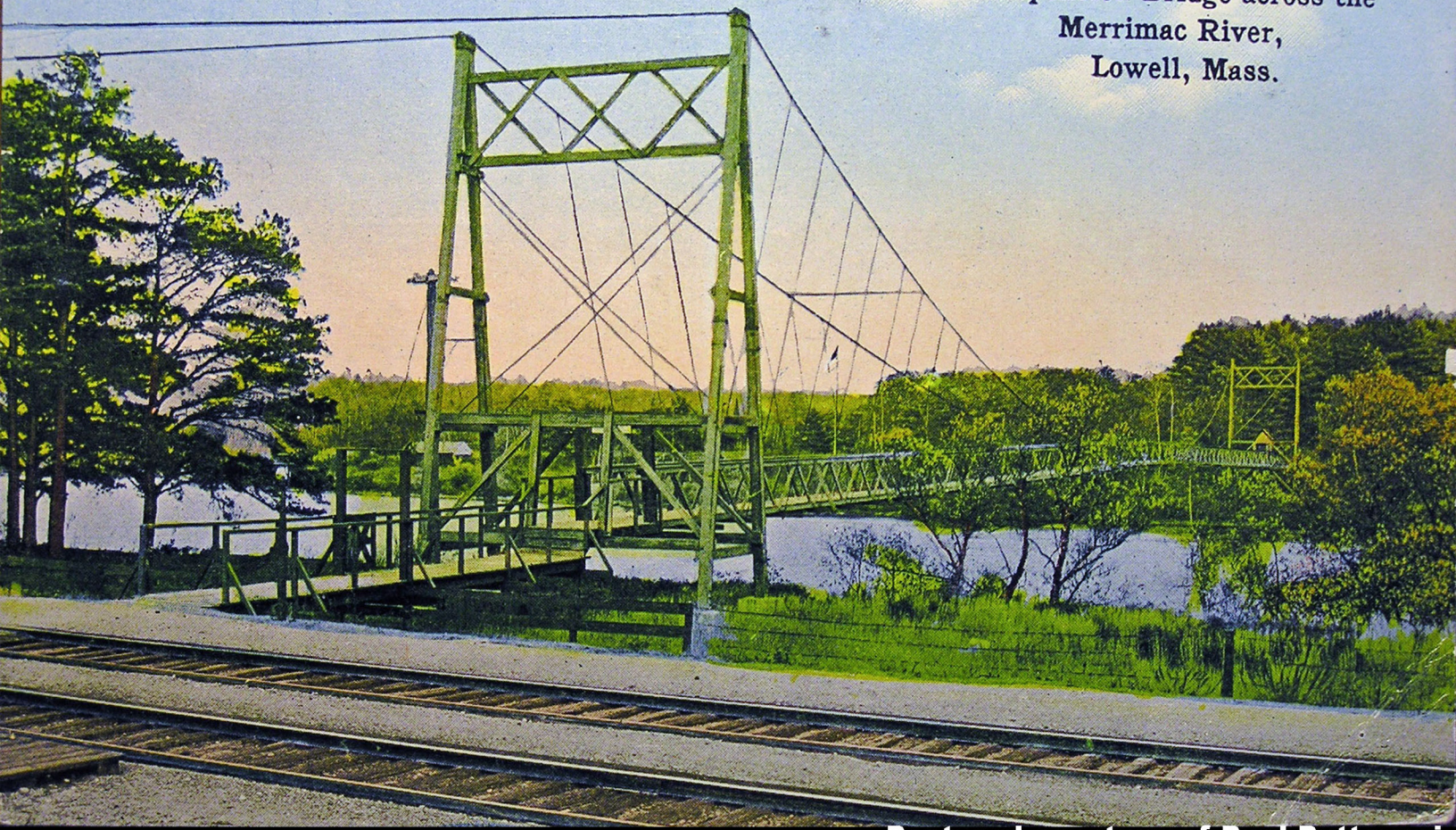
A turnstile allowed passage at the island end of the bridge when a nickel was inserted



Vesper C. C. Lowell - Mass

Postcard courtesy of Paul Pettazoni

Vesper Country Club.
Suspension Bridge across the
Merrimac River,
Lowell, Mass.



Postcard courtesy of Paul Pettazoni

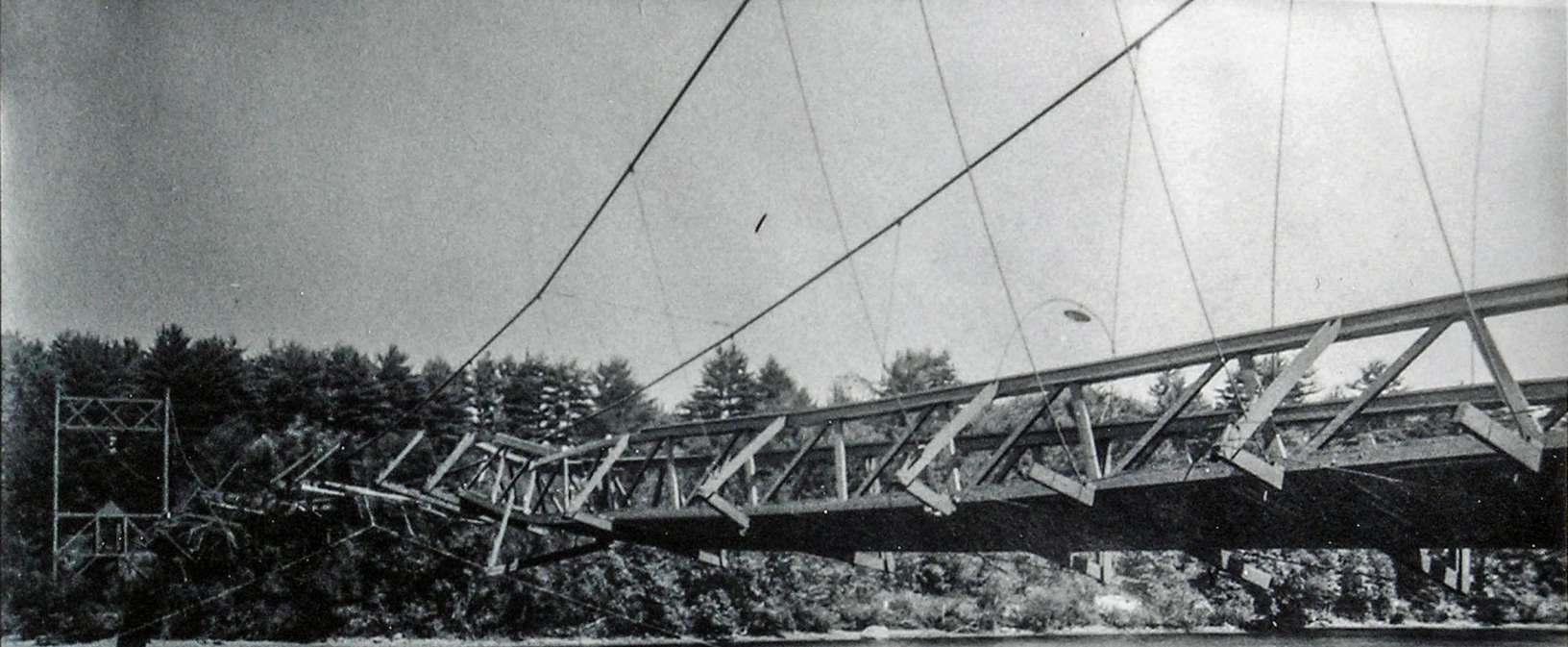
1914

On July 12 a cyclone wrecked the long suspension bridge which had been completed in 1908. This was a severe blow to Vesper as most members still reached the club via street cars or trains on the other side of the river.

A float was placed on the Tyngsboro shore and a motor boat was engaged to meet all cars and convey passengers to the Club boat-house or the island for a fare of five cents per person.

A month later contracts were made with the New England Construction Company to rebuild the bridge, with steel towers instead of wooden ones, for \$6209.00.

From "100 Years at Vesper" by Brendan D. Leahey M.D., 1979, courtesy of George Leahey



River →

Vesper Country Club Suspension Bridge.
Partly demolished by Tornado
Sunday July 12, 1914 P. M.
From West side, looking toward Island.



Vesper Country Club Suspension Bridge,
Partly demolished by Tornado July 12, 1914, P.M.
From west side, looking toward Island.



Vesper Country Club Suspension Bridge
Partly demolished by Tornado July 12, 1914, P.
From west side looking toward Island,

Photo courtesy of George Leahey, Vesper Country Club



Vesper Country Club Suspension Bridge
Partly demolished by tornado July 12, 1914.
From Island looking west.

Photo courtesy of George Leahey, Vesper Country Club



75. *View down rebuilt bridge 1930. This was the longest suspension bridge of its width in the world and was a favorite promenade for couples during dance intermissions. Girls would feign terror when two or three boys would sway in unison and swing the center of the bridge from side to side.*

1936

THE BIG FLOOD! On March 12, the river

began to rise and ice broke up; but no damage was done until March 13. An ice jam about 15 feet high came down late in the afternoon. Fortunately, the creek jammed with floating ice. This helped to send a big jam toward the Tyngsboro shore saving the club house and the island. It, however, broke the tying rods which kept the footbridge across the main river from swaying; and these rods kept pounding the bridge until they smashed the bridge to pieces, leaving only the pillars and the cables standing. The Boston and Maine railroad, over whose tracks the cables were anchored, cut the cables to protect their tracks and both cables and pillars went into the river.

It was thought we had passed the danger line, but the river continued to rise until it was 7 feet higher than it had ever been before! This covered the island except its highest point. The main club house floor was 3 feet under water, the old bungalow and golf house about 4 feet. The flood tore up the road from the auto bridge to the club house and carried away the auto bridge. The Forrest Bridge (the footbridge near number 4 hole) remained, but one end dropped down 3 feet. Most of the fairways and the island were left covered by sand, mud and debris. No. 1 green and No. 4 were badly washed out. At the site of No. 1 green was a crater 15 feet deep!

Rourke "Temporary" Bridge
Year Built - 1983, Structure Length - 339.2 m



9/24/2004 F. Merriam



Rourke Bridge

2/22/2005 F. Merriam



Rourke Bridge pedestrian passage

2/22/2005 F. Merriam

PONTOON BRIDGE LOOKING DOWN THE RIVER,
LOWELL, MASS.



Pontoon Bridge near present day Rourke Bridge location

Postcard courtesy of Paul Pettazoni

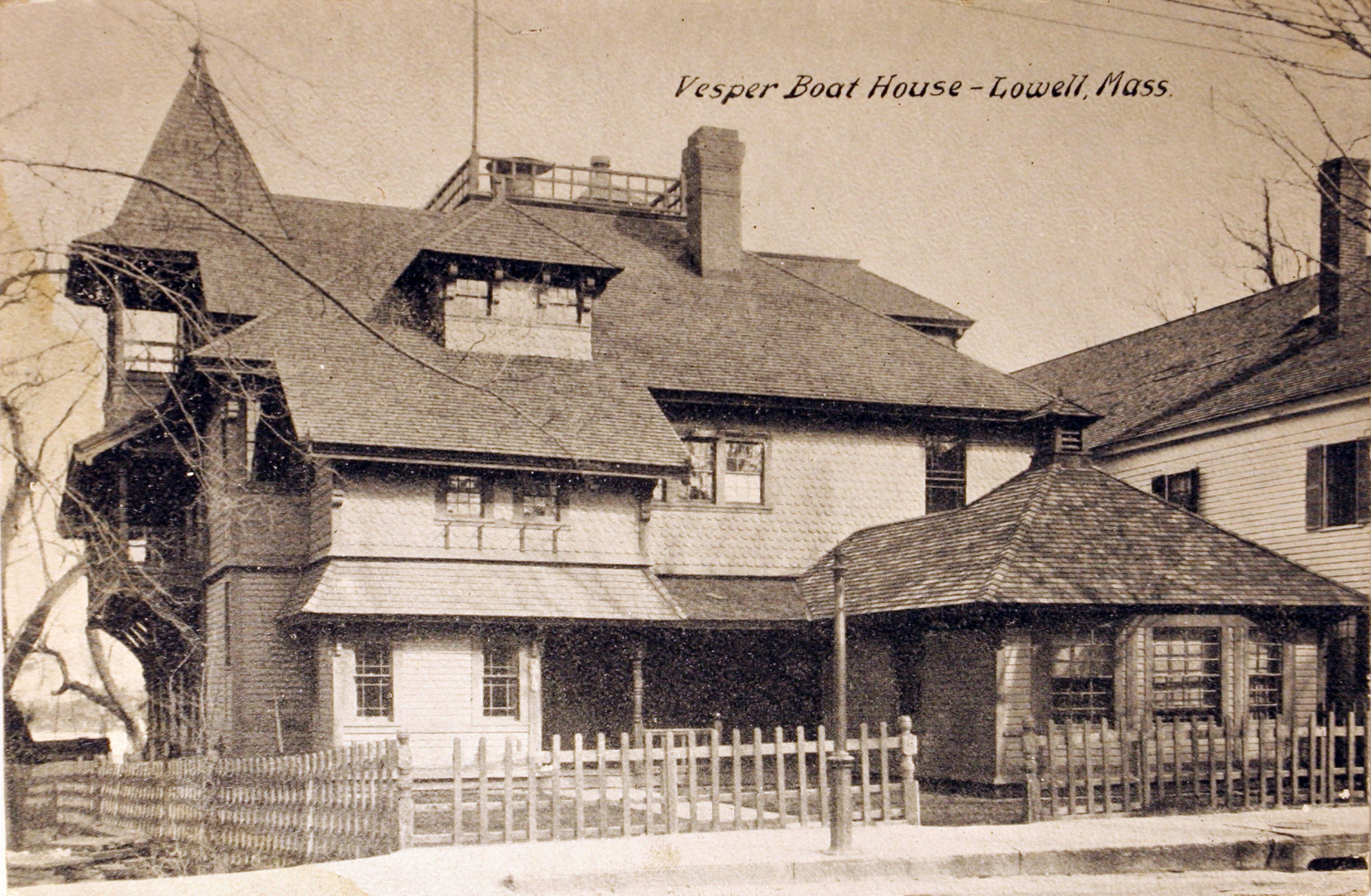
Lowell, Mass. Steamboat Landing and Pawtucket Boat House.



Steamboat Governor Allen on Pawtucket Canal

Postcard courtesy of Paul Pettazoni

Vesper Boat House - Lowell, Mass.

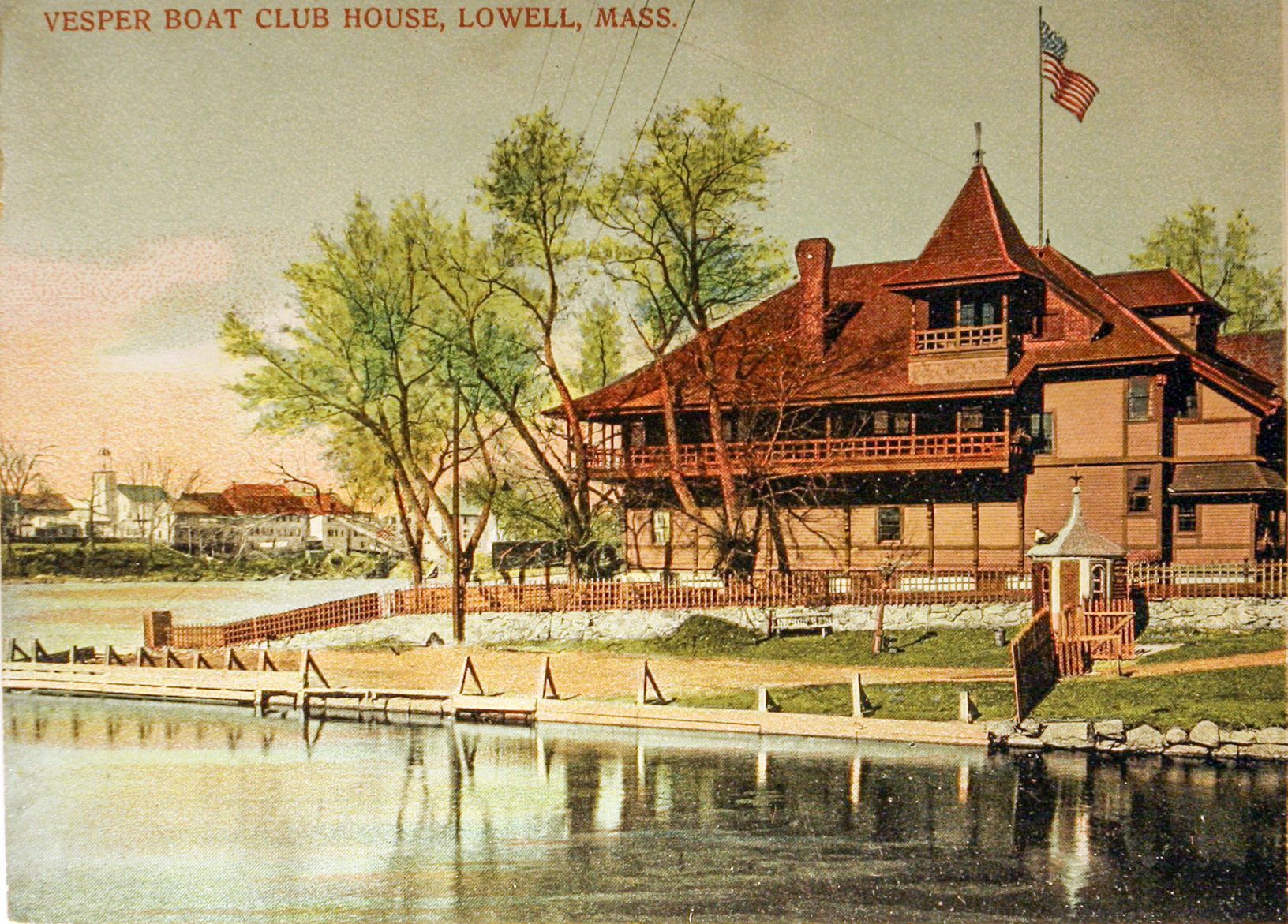


Postcard courtesy of Paul Pettazoni



Postcard courtesy of Paul Pettazoni

VESPER BOAT CLUB HOUSE, LOWELL, MASS.



Postcard courtesy of Paul Pettazoni



Vesper Club Boat House, Lowell, Mass.

Dear Allice,
This is where Bob & I started up
the Merrimack from Ollie

Published by The Metropolitan News Co., Boston.

Postcard courtesy of Paul Pettazoni



G 1575 Vesper Boat House, Lowell, Mass.

How is Lida, too?
Hello Grace, how are you getting along these days?
Lovingly Edith

16703.

Vesper Boat Houses,
Lowell, Mass.



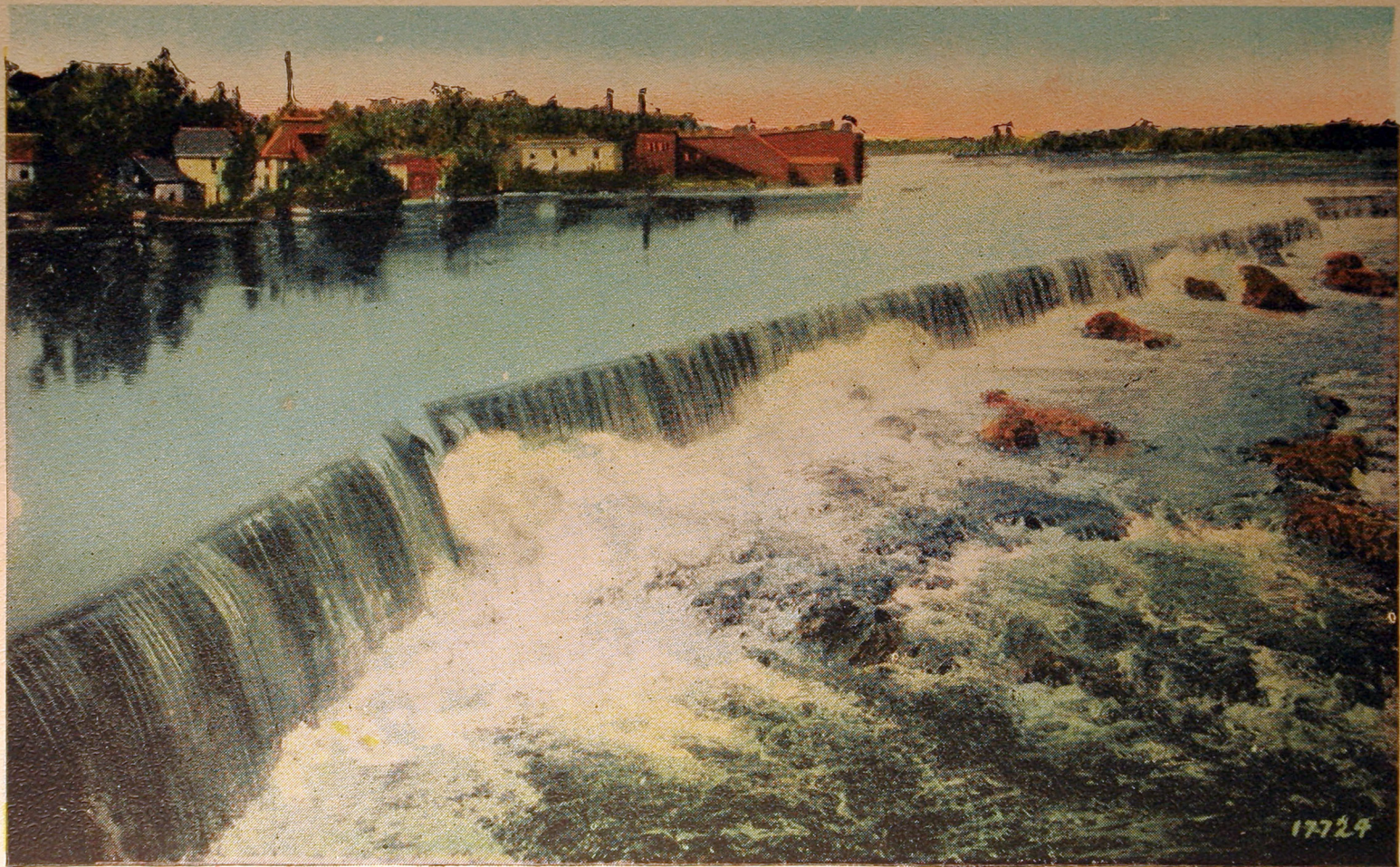
Postcard courtesy of Paul Pettazoni

LOWELL, MASS. PAWTUCKET FALLS.



Postcard courtesy of Paul Pettazoni

9:—Pawtucket Falls, Lowell, Mass.





LOWELL, MASS. Pawtucket Falls—Merrimac River.

111
111
111



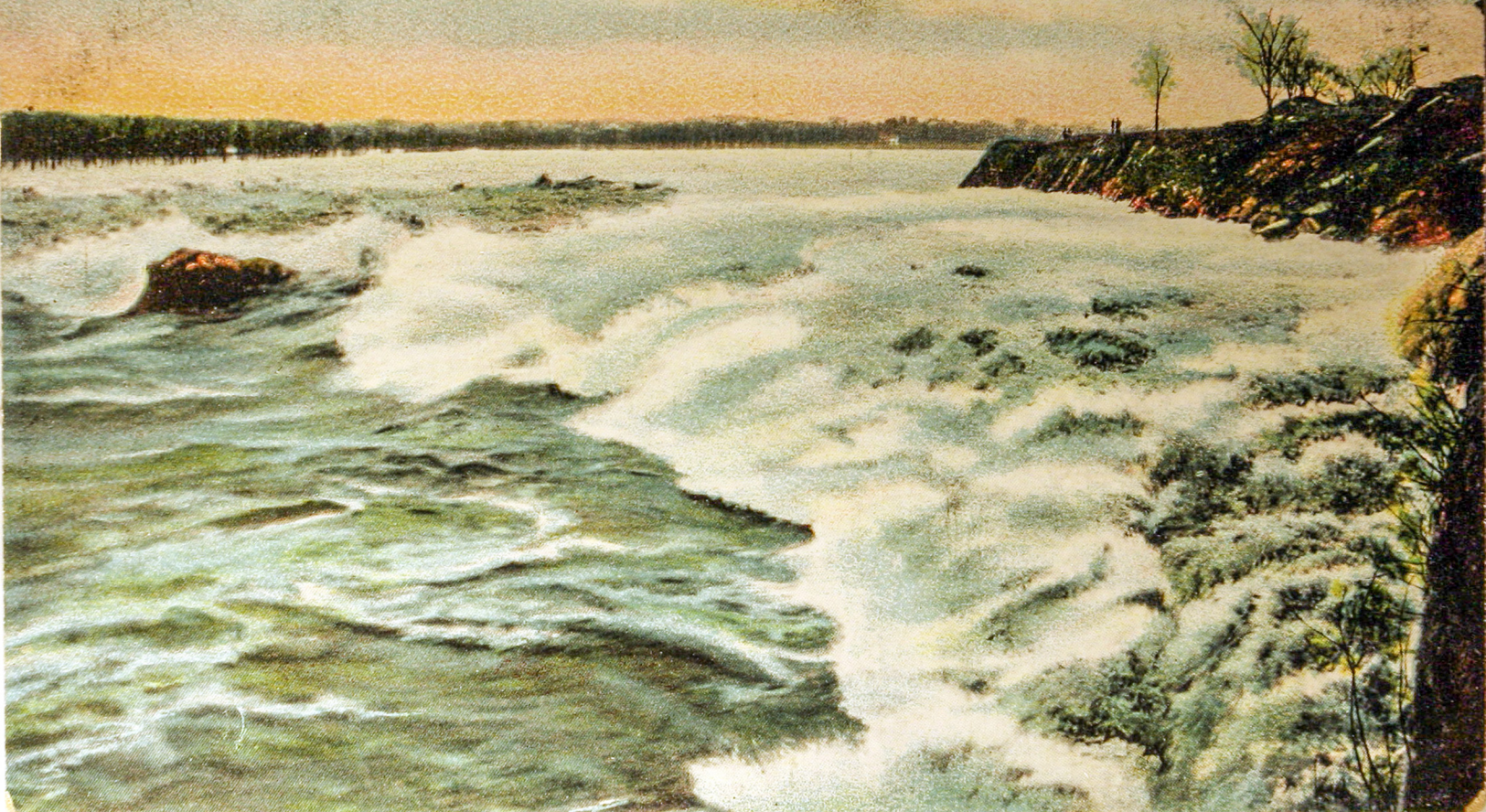
Pawtucket Falls - Lowell, Mass.

The falls in a flood.

Postcard courtesy of Richard O. Lahue

Merrimack River, High Water, Lowell, Mass.

16664.



Postcard courtesy of Paul Pettazoni



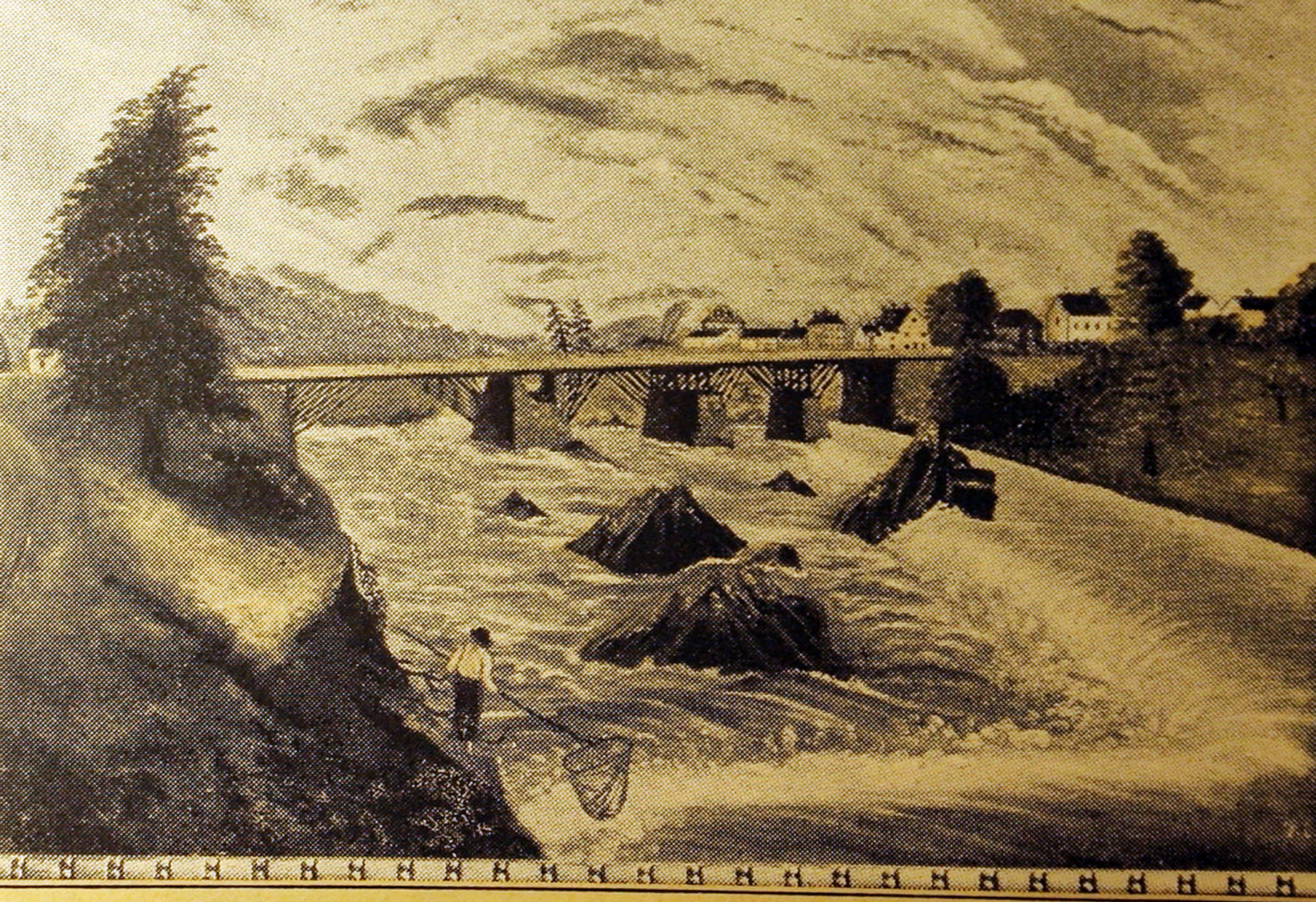
Fourth of July river traffic above the Pawtucket Falls

7/4/2005 F. Merriam



Present day view toward site of Vesper boat house and ice houses

7/4/2005 F. Merriam



*From a painting of the Original Pawtucket
Bridge, the first bridge over
the Merrimack*

Courtesy of Paul Pettazoni

Pawtucketville Bridge (School Steet) prior to 1917



PAWTUCKET BRIDGE. LOWELL, MASS.

Postcard courtesy of Richard O. Lahue



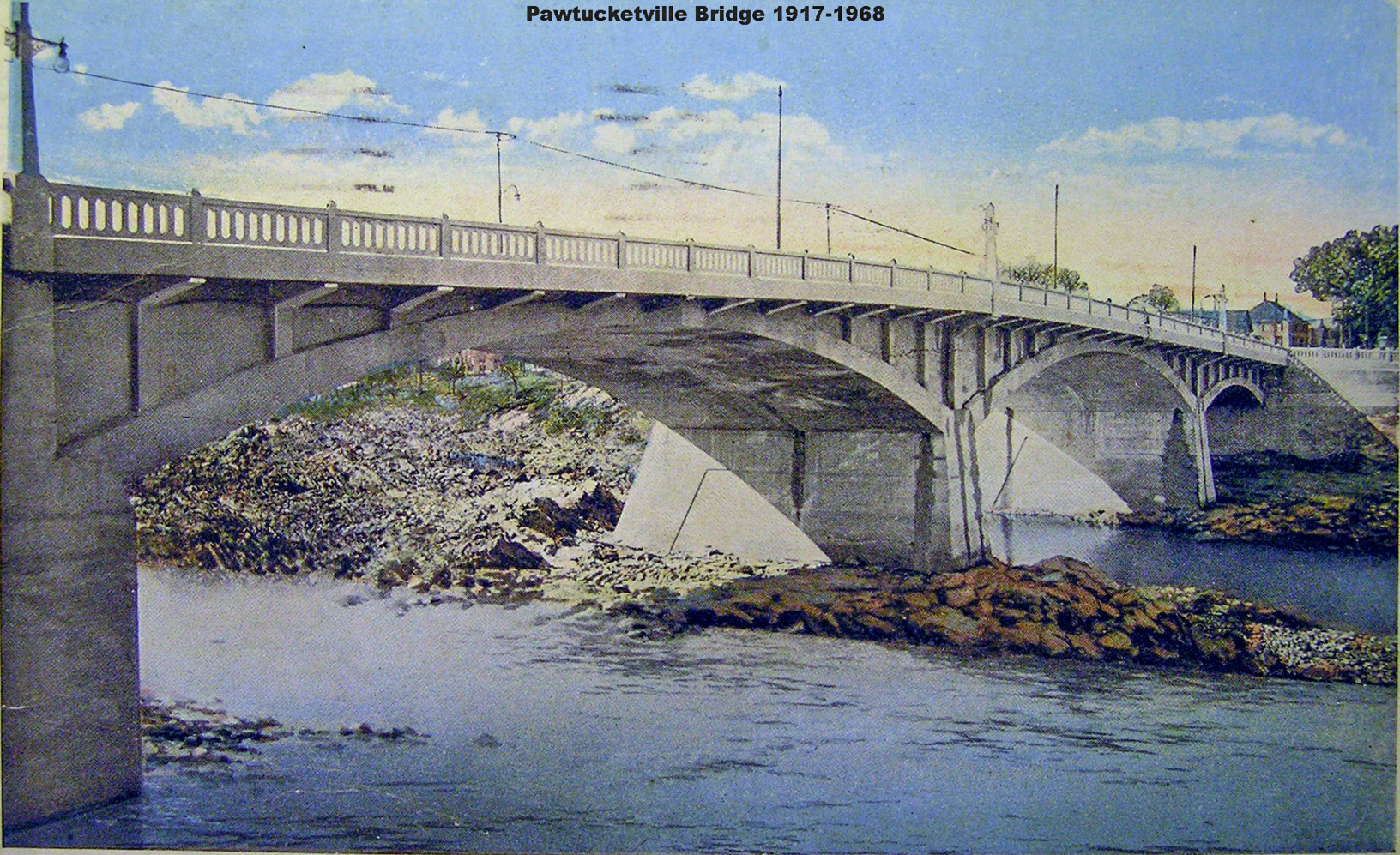
Pawtucket Bridge and Rapids,
Lowell, Mass.

Postcard courtesy of Paul Pettazoni

Riverbed of Merrimac River, Lowell, Mass.



Pawtucketville Bridge 1917-1968



NEW PAWTUCKETVILLE BRIDGE, LOWELL, MASS.

Postcard courtesy of Richard O. Lahue



PAWTUCKETVILLE BRIDGE AND FALLS, MERRIMACK RIVER, LOWELL, MASS.

1A484

10:—New Pawtucketville Bridge, Lowell, Mass.



Postcard courtesy of Paul Pettazoni

1917-1968

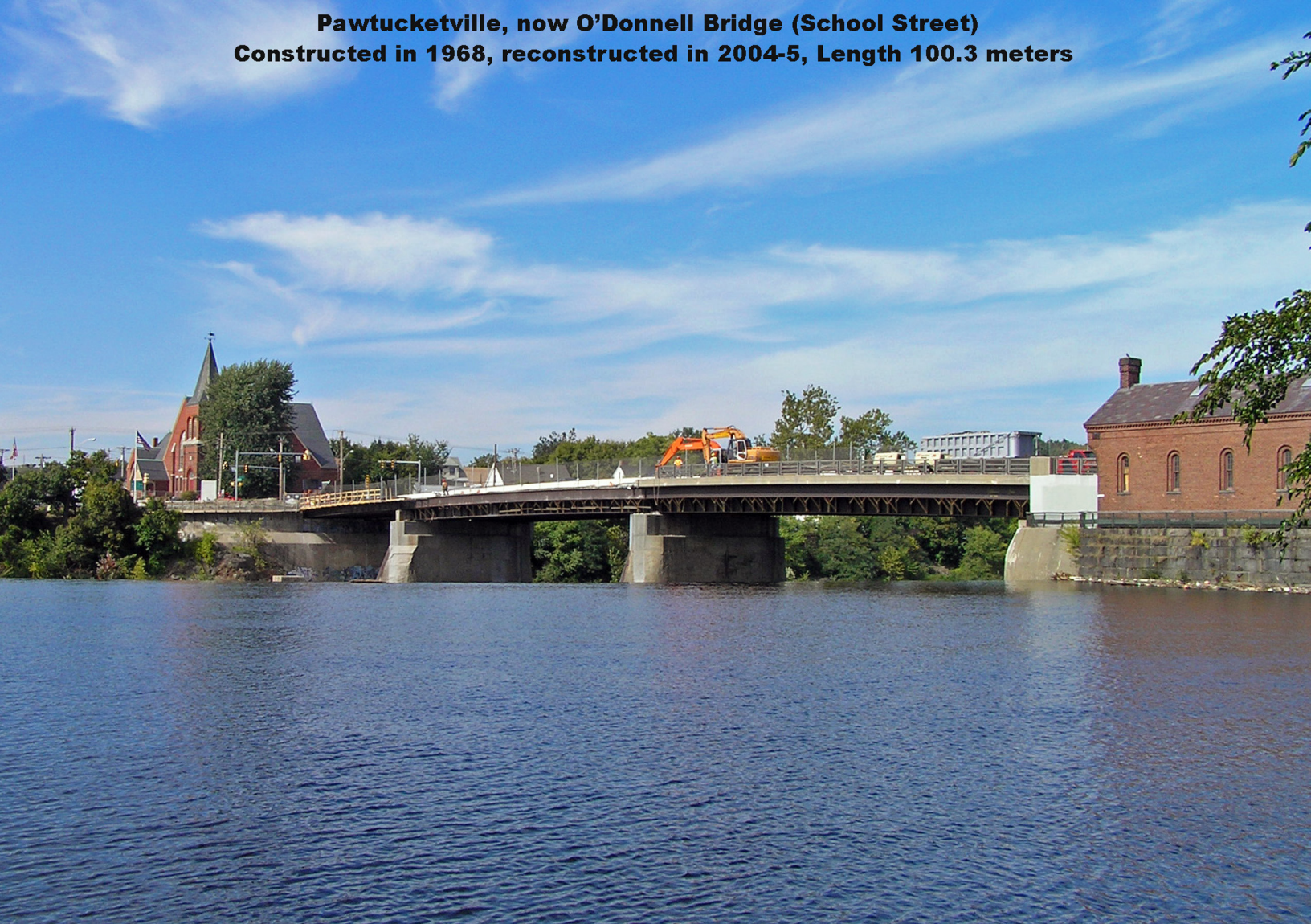
Pawtucketville Bridge and Dam, Lowell, Mass.



5B-H1138

Postcard courtesy of Richard O. Lahue

**Pawtucketville, now O'Donnell Bridge (School Street)
Constructed in 1968, reconstructed in 2004-5, Length 100.3 meters**



**Northern Canal control gate house on left
Dam maintenance blacksmith shop on right**



10/1/2004 F. Merriam



O'Donnell Bridge under reconstruction

9/24/2004 F. Merriam



Northern Canal gate house and Pawtucket Dam blacksmith shop

7/4/2005 F. Merriam



O'Donnell Bridge after reconstruction

7/4/2005 F. Merriam

MEMORIAL TO PASSACONNAWAY

CHIEF OF PAWTUCKET INDIANS

NEAR THIS SPOT IN 1648 HE ACCEPTED CHRISTIANITY

UNDER THE PREACHING OF JOHN ELIOT

PRESENTED BY THE MOLLY VARNUM CHAPTER D A R

GIVEN TO THE CITY OF LOWELL

JUNE 11, 1935

ERECTED BY
THE GRATEFUL PEOPLE OF
PAWTUCKETVILLE

IN MEMORY OF THOSE VALIANT
RESIDENTS WHO MADE
THE SUPREME SACRIFICE IN
ALL WARS IN WHICH OUR
COUNTRY WAS ENGAGED.



DEDICATED MAY 30, 1951



Newly completed roadbed on O'Donnell Bridge

7/4/2005 F. Merriam



O'Donnell Bridge after reconstruction

7/4/2005 F. Merriam

2005

**JAMES E. O'DONNELL
BRIDGE**

CITY MANAGER - CHARLES A. GALLAGHER
MAYOR - ROBERT G. MAGUIRE
CONTRACTOR - BRENDAN ENGINEERING CORP.
CONSULTING ENGINEER - A. L. DELANEY
CITY ENGINEER - GEORGE M. McDONOUGH
COMMISSIONER OF PUBLIC WORKS
GEORGE R. LEGRAND
SITE OF FIRST BRIDGE CROSSING MERRIMACK RIVER
1968

CANAL WALK LOWELL, MASS.



Postcard courtesy of Paul Pettazoni



CANAL WALK LOWELL, MASS.

Dear, Mamma. Just a few lines,

5646

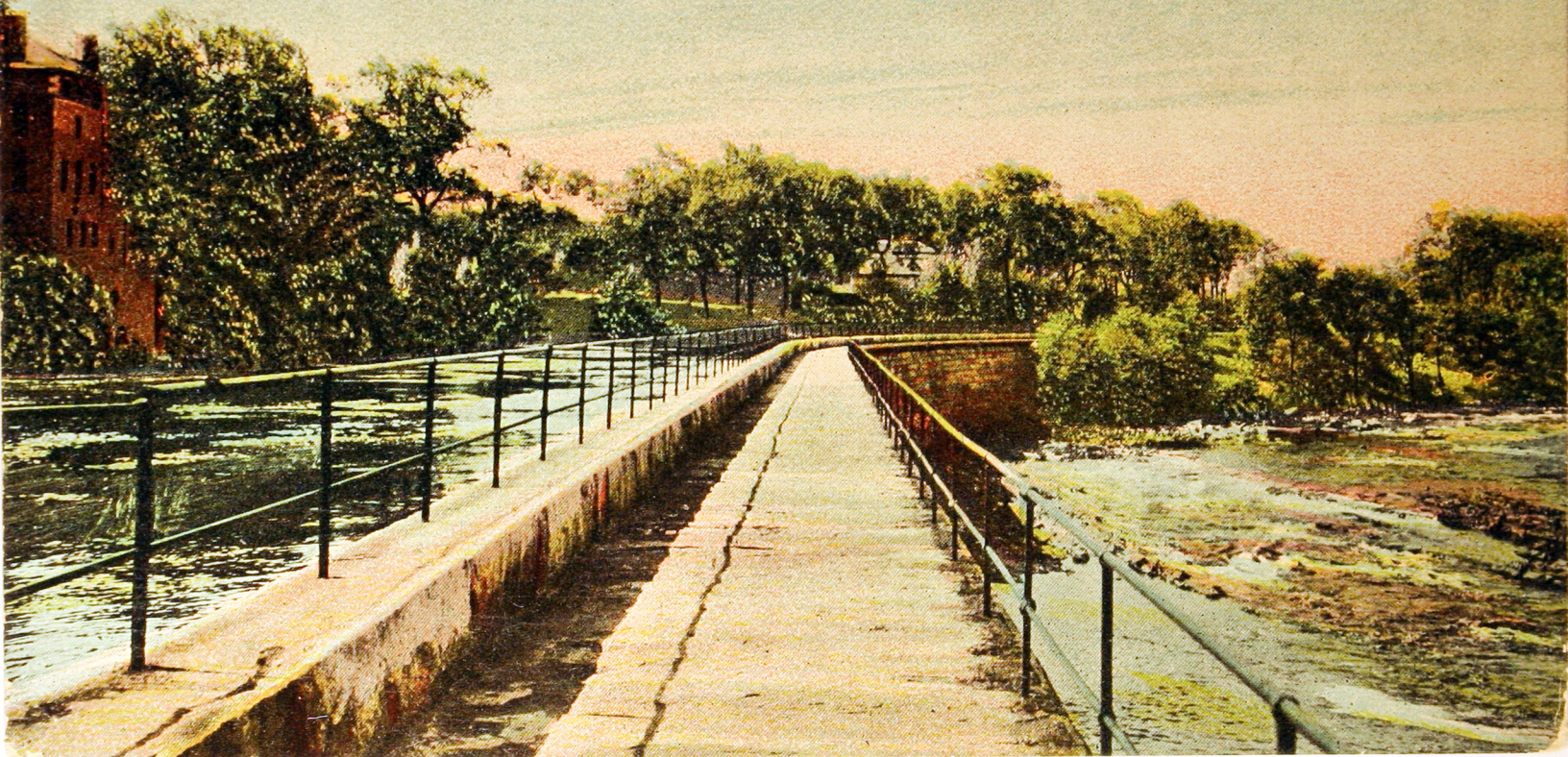
Postcard courtesy of Richard O. Lahue

Pawtucket Walk and Bed of Merrimac River, Lowell, Mass.

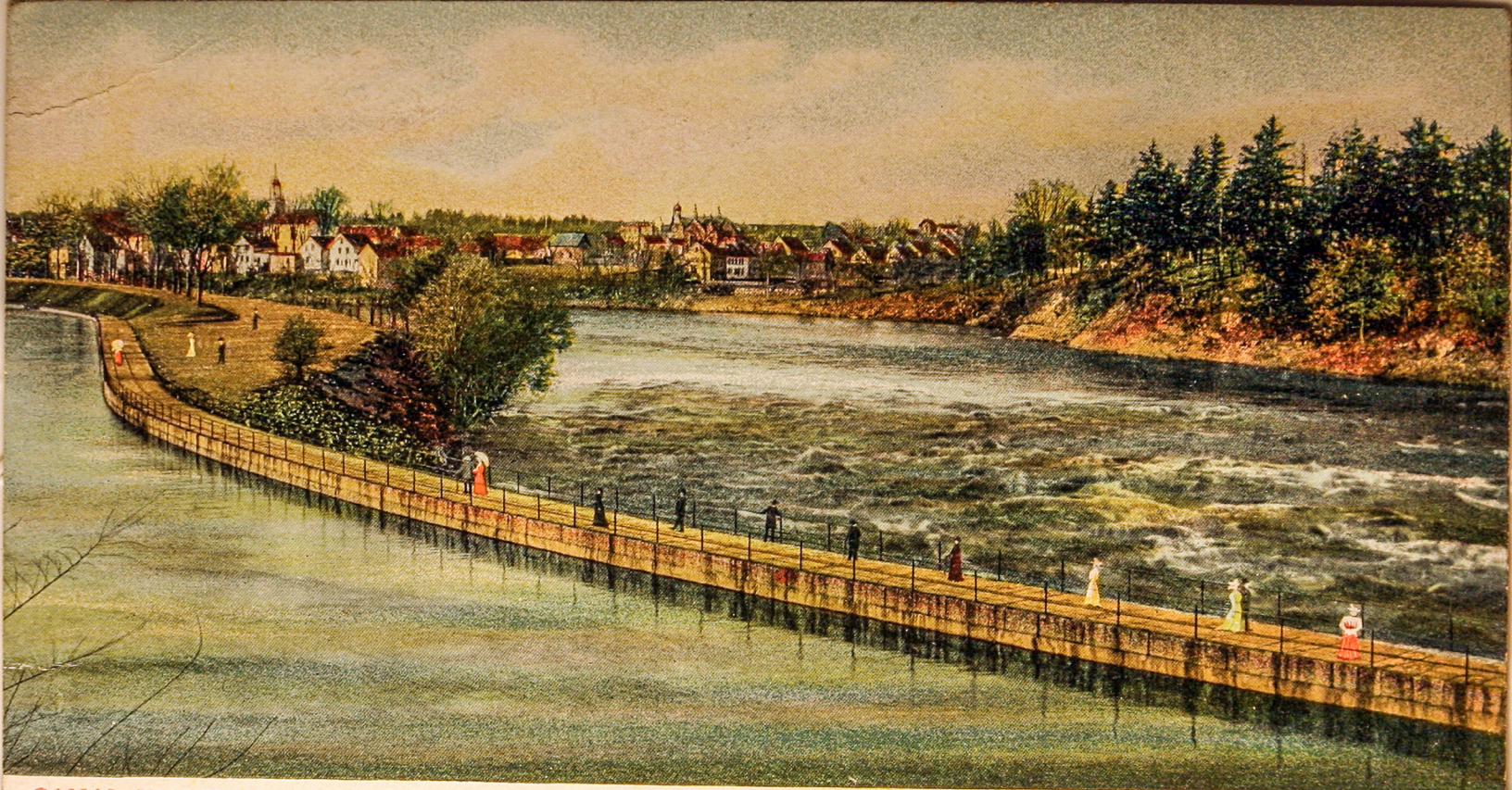


24 823 (JK)

LOWELL, MASS. THE WALK PAWTUCKET FALLS



Postcard courtesy of Paul Pettazoni



CANAL WALK LOWELL, MASS.

5848



CANAL WALK, MERRIMACK RIVER, LOWELL, MASS.

96169

Postcard courtesy of Paul Pettazoni



Canal Walk in Winter, Lowell, Mass.

Published by Bon Marché.

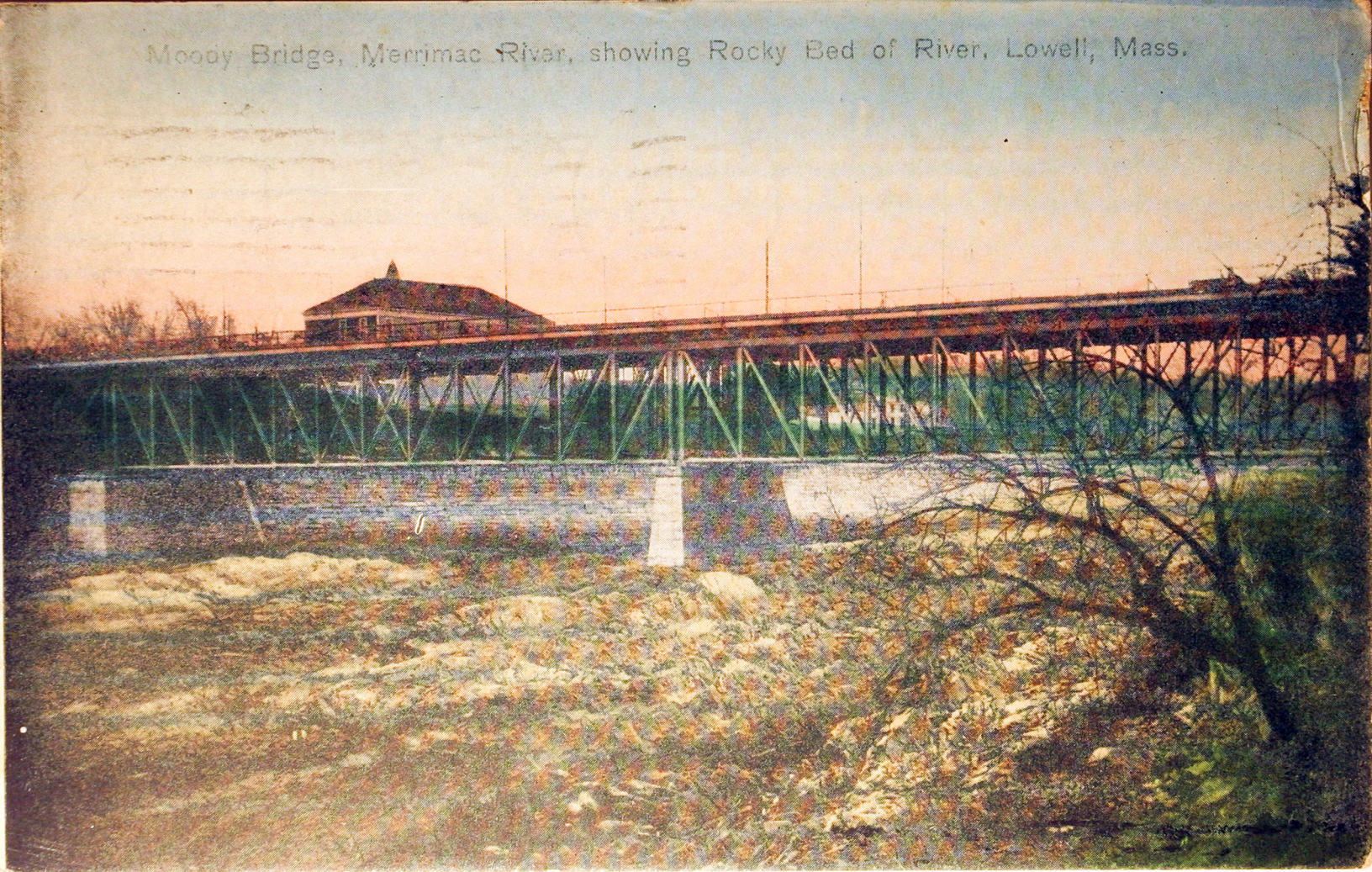
Postcard courtesy of Paul Pettazoni



MOODY STREET BRIDGE. LOWELL, MASS.

W.F.

Moody Bridge, Merrimac River, showing Rocky Bed of River, Lowell, Mass.



Moody Street Bridge and Textile School, Lowell, Mass.



Postcard courtesy of Paul Pettazoni

Textile School, Lowell, Mass.



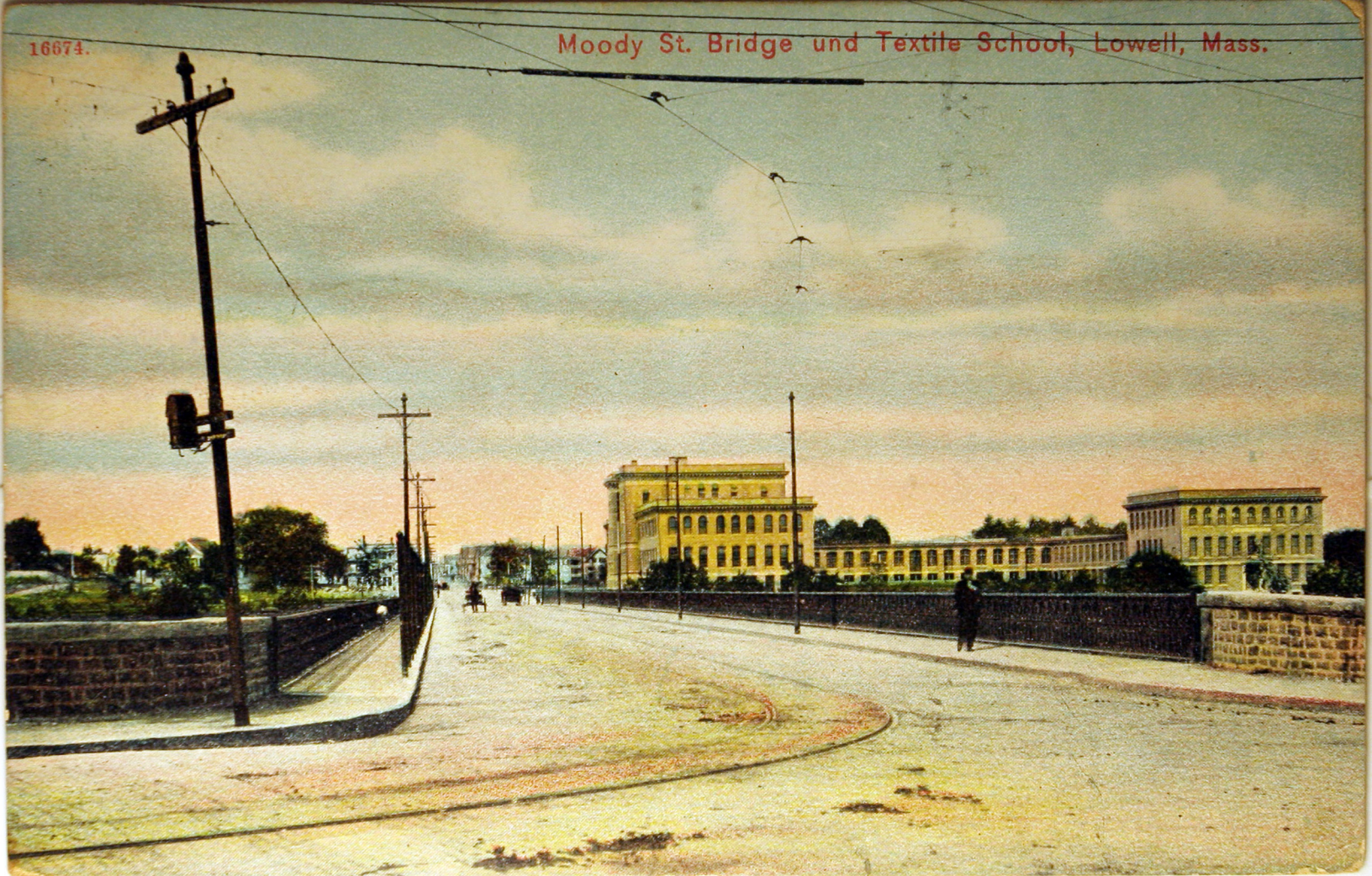
209632 (SM)

Moody Street Bridge (later University Ave)

Postcard courtesy of Richard O. Lahue

16674.

Moody St. Bridge und Textile School, Lowell, Mass.



Postcard courtesy of Paul Pettazoni

University Avenue Bridge with hydro power plant on left and students on deck



**University Avenue Bridge taken from Mammoth Road.
LeLacheur Field lights in background and hydro power station underneath.**



10/1/2004 F. Merriam

Hydro power plant from University Ave Bridge. Northern Canal on right



Ouelette Bridge (Aiken Street)

Year Built - 1883, Reconstructed - 1998, Structure Length - 237.7 m



10/1/2004 F. Merriam

FLOOD SCENE ON MERRIMAC RIVER



LOWELL, MASS.



FLOOD SCENE ON MERRIMAC RIVER AT LOWELL, MASS.

Postcard courtesy of Paul Pettazoni



Miller Street Bridge
Lowell, Mass.

A432



10/1/2004 F. Merriam



National Park Turbine Exhibit under Boott Mill No.5

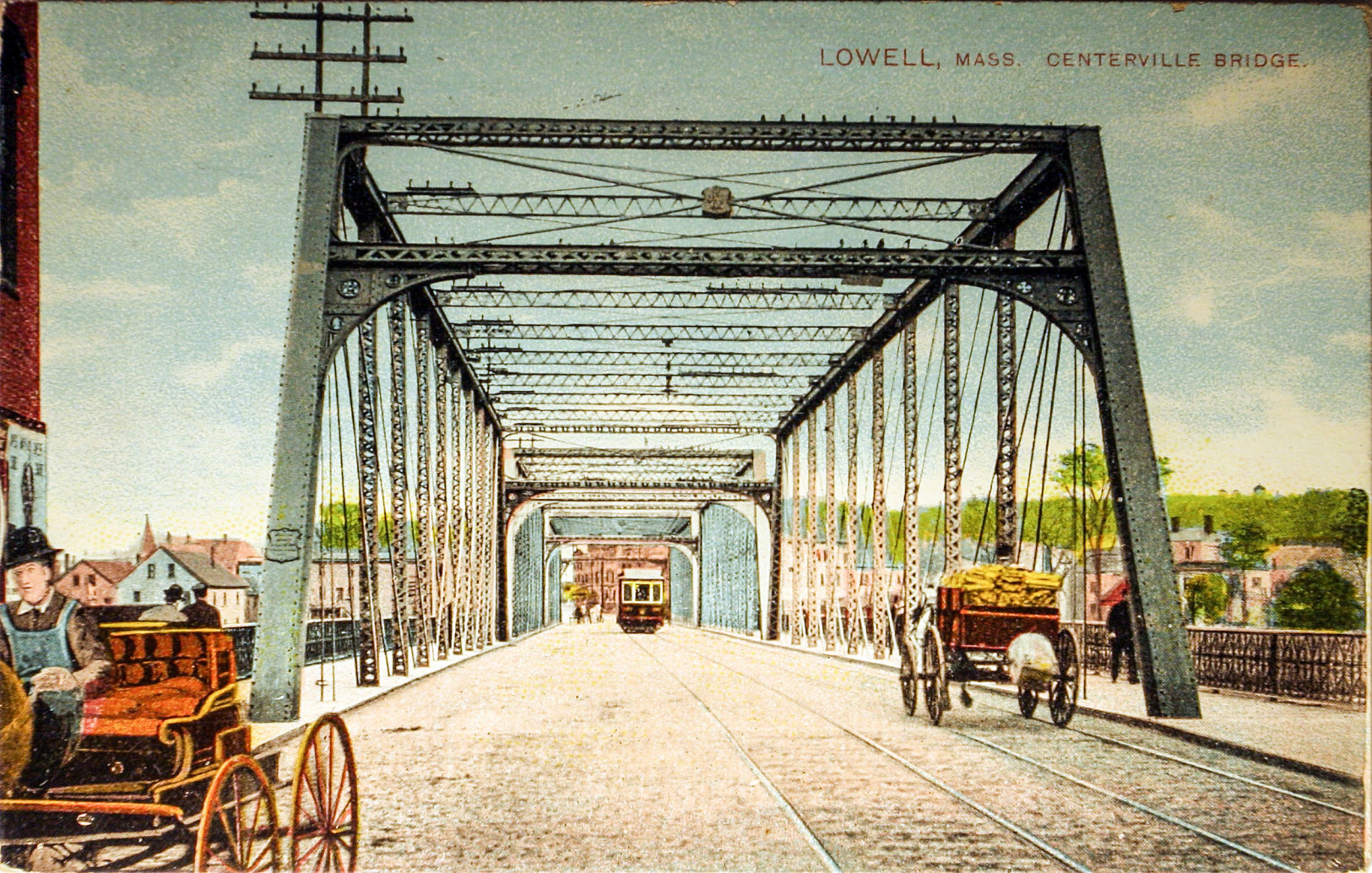
10/1/2004 F. Merriam

Bridge St. Bridge, across the Merrimack River, Lowell, Mass.



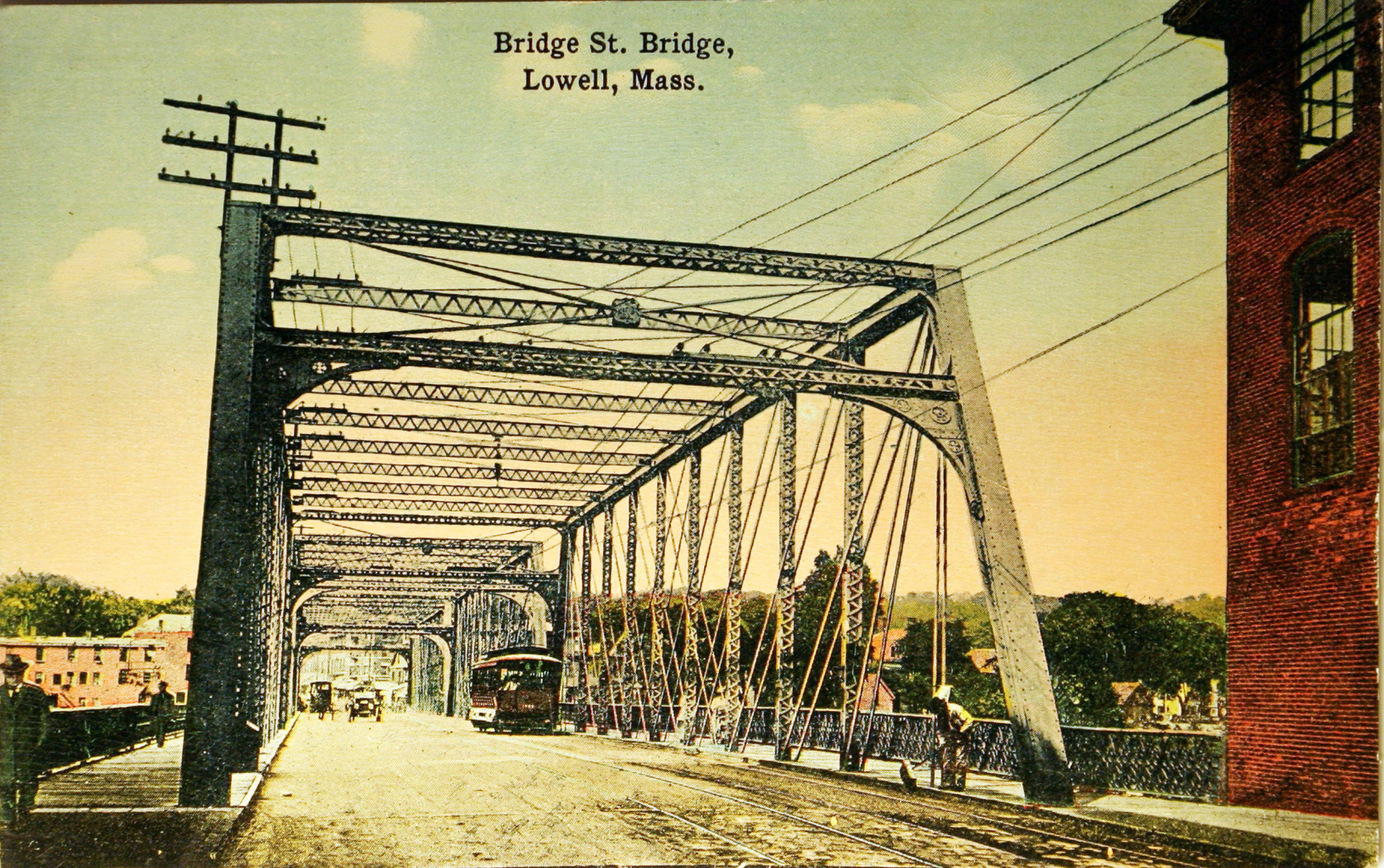
219688

LOWELL, MASS. CENTERVILLE BRIDGE.



Postcard courtesy of Paul Pettazoni

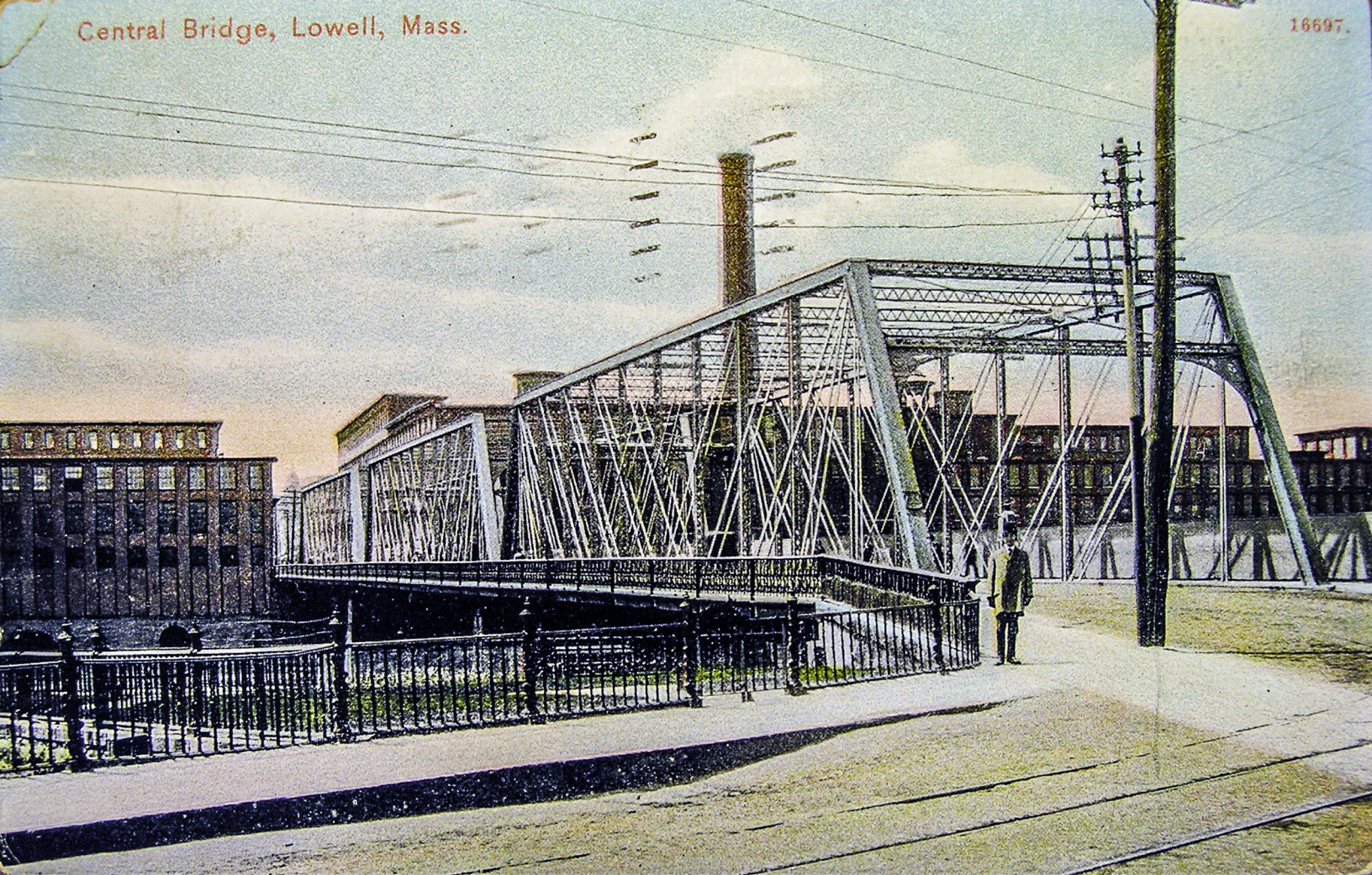
Bridge St. Bridge,
Lowell, Mass.



Postcard courtesy of Paul Pettazoni

Central Bridge, Lowell, Mass.

16697.



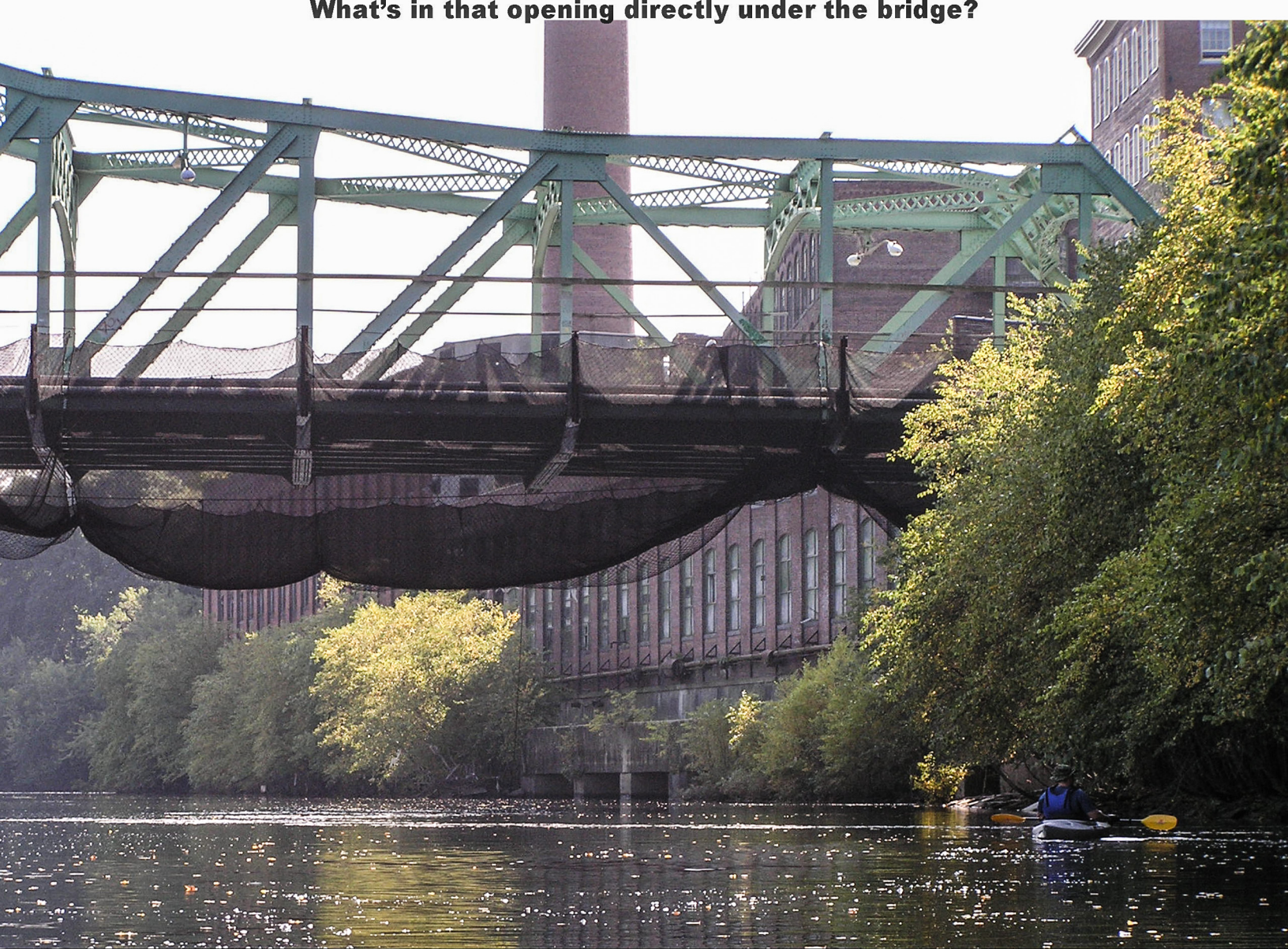
Central Bridge (later Cox Bridge) prior to 1937

Postcard courtesy of Richard O. Lahue

**Cox Bridge in foreground (Bridge Street) Year Built - 1937, Structure Length - 144.5 m
Route 38 Bridge in background (Nesmith Street)**



What's in that opening directly under the bridge?



10/1/2004 F. Merriam



Mill No. 7 Tailrace Under Boott Mills

10/1/2004 F. Merriam



10/1/2004 F. Merriam

East Merrimac Street bridge ahead with Doubletree Hotel and walkway beyond. Wet kayaker under overturned boat. Massachusetts Mills on right - what's inside those arches?



10/1/2004 F. Merriam



10/1/2004 F. Merriam



10/1/2004 F. Merriam



If it looks like a duck ... Duck Island

10/1/2004 F. Merriam

Route 93 Bridge, Andover
Year Built - 1959, Reconstructed - 1975, Structure Length - 236.2 m



10/1/2004 F. Merriam



10/1/2004 F. Merriam

End of the line at South Broadway Street Bridge in Lawrence, Hydro power plant on right



10/1/2004 F. Merriam