

THE  
CHRONICLE

1940

The Chronicle  
of  
1940

Edited by the Students of  
Chelmsford High School



## Foreword

*Within these pages is a written and pictorial record of youthful accomplishment.*

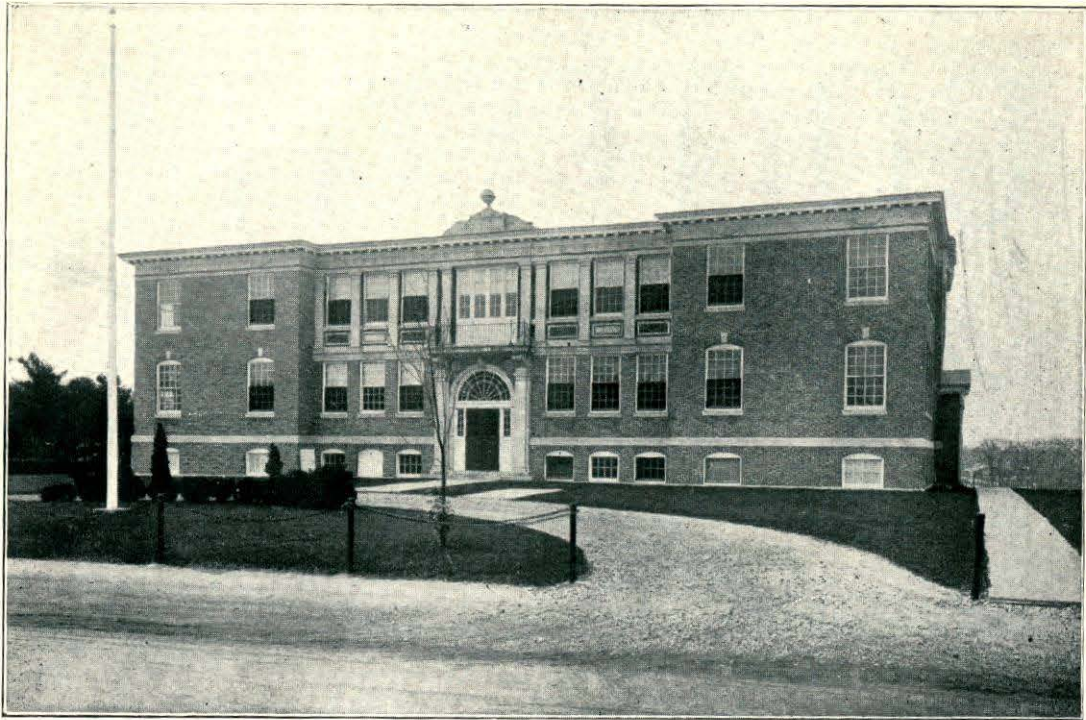
*Here is recorded the cast of characters about to enter upon life's broader stage. You alone create the role you are to play, and your performance will be the living testimony thereof. To each and every one of you is given the power to merit the admiration and affection of your future audience.*

*Enter, therefore, into the ever changing drama of life resolved to continue a work so well begun.*

# CONTENTS



|                                      |    |
|--------------------------------------|----|
| Foreword . . . . .                   | 2  |
| Contents . . . . .                   | 3  |
| Chelmsford High School . . . . .     | 4  |
| Dedication . . . . .                 | 5  |
| George S. Wright . . . . .           | 7  |
| Poem . . . . .                       | 8  |
| Lucian H. Burns . . . . .            | 9  |
| Faculty . . . . .                    | 10 |
| "Chelmsford High" . . . . .          | 14 |
| Board of Editors . . . . .           | 15 |
| Seniors . . . . .                    | 16 |
| Class Ode . . . . .                  | 35 |
| Class of 1940 . . . . .              | 36 |
| Tribute to Mr. MacLaughlan . . . . . | 37 |
| Undergraduates . . . . .             | 38 |
| Junior Class . . . . .               | 40 |
| <i>Sophomore Class</i> . . . . .     | 41 |
| Freshman Class . . . . .             | 42 |
| Athletics . . . . .                  | 44 |
| Activities . . . . .                 | 52 |
| Humor and Special Features . . . . . | 74 |
| Autographs . . . . .                 | 85 |



## Chelmsford High School

*C* stands for Courage for which our teams are known,  
*H* for High standards which make school renowned  
*E*'s for the Effort made—with every one a rule  
*L* for the Loyalty—of the students in our school  
*M* stands for Masters who at Chelmsford are the best,  
*S* brings us to Scholars, ours excel the rest  
*F* represents Faith in all our teachers, friends  
*O* is for Oneness in attempts to gain our ends  
*R* stands for the Richness of Chelmsford's pride and fame  
*D* for Devotion never lessening this name.

—IRENE BOUCHER '40



## Dedication

to

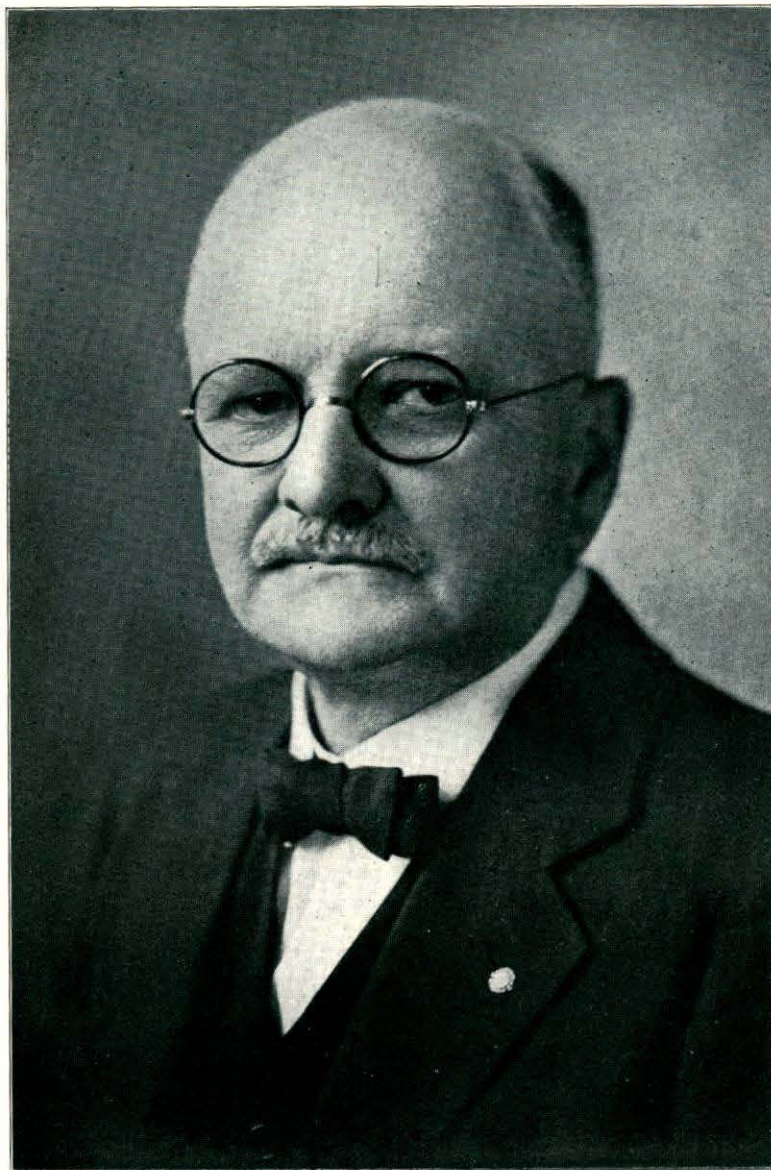
ERNESTINE E. MAYNARD

*In recognition of her six years of service in Chelmsford High School  
marked by conscientious and efficient work, keen interest in school activities,  
and sympathetic understanding of pupils' problems,  
we, the Board of Editors, gratefully dedicate this book.*



*I would advise all in general, that they would take into serious consideration the true and genuine ends of knowledge; that they seek it not either for pleasure, or contention, or contempt for others, or for profit, or fame, or for honour and promotion, or such-like adulterate and inferior ends; but for merit and emolument of life, that they may regulate and perfect the same in charity.*

—BACON



GEORGE S. WRIGHT  
*Superintendent of the Chelmsford Schools*



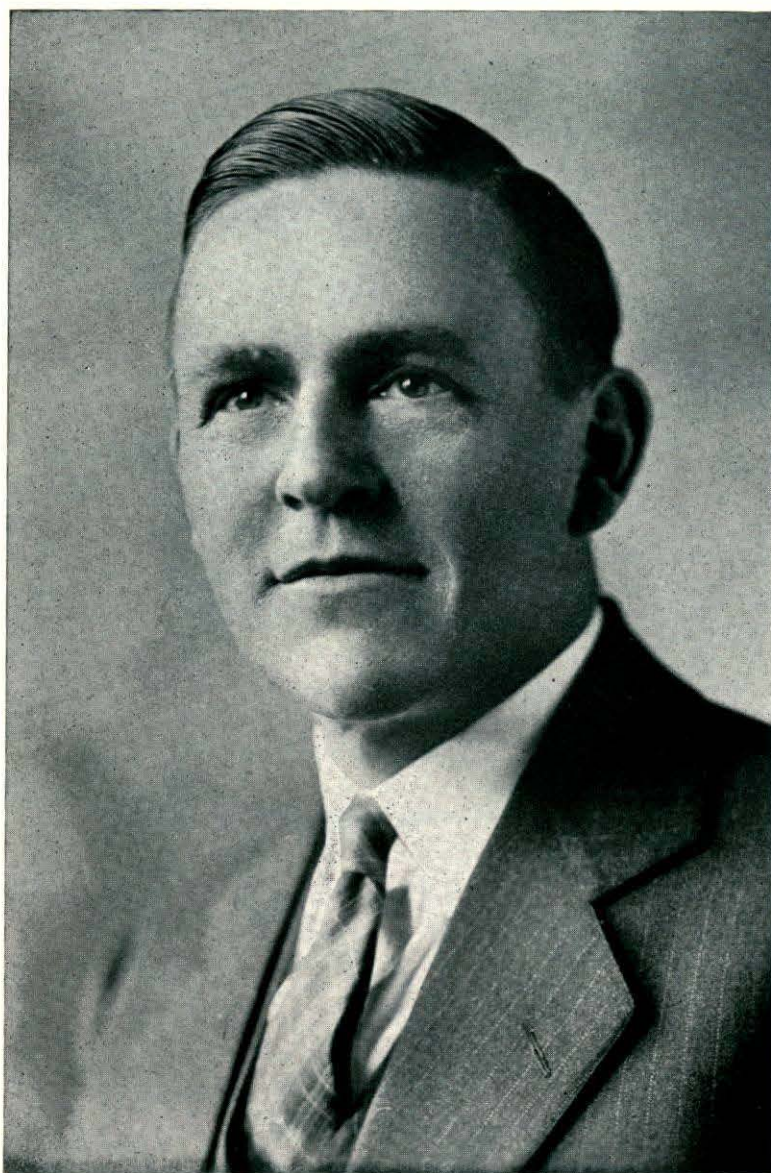


ONE SHIP DRIVES EAST

One ship drives east, another drives west  
While the selfsame breezes blow;  
'Tis the set of the sail and not the gale  
That bids them where to go.

Like the winds of the sea are the ways of fate  
As we journey along through life;  
'Tis the set of the soul that decides the goal  
And not the calm or the strife.

—R. R. WILLIAMS

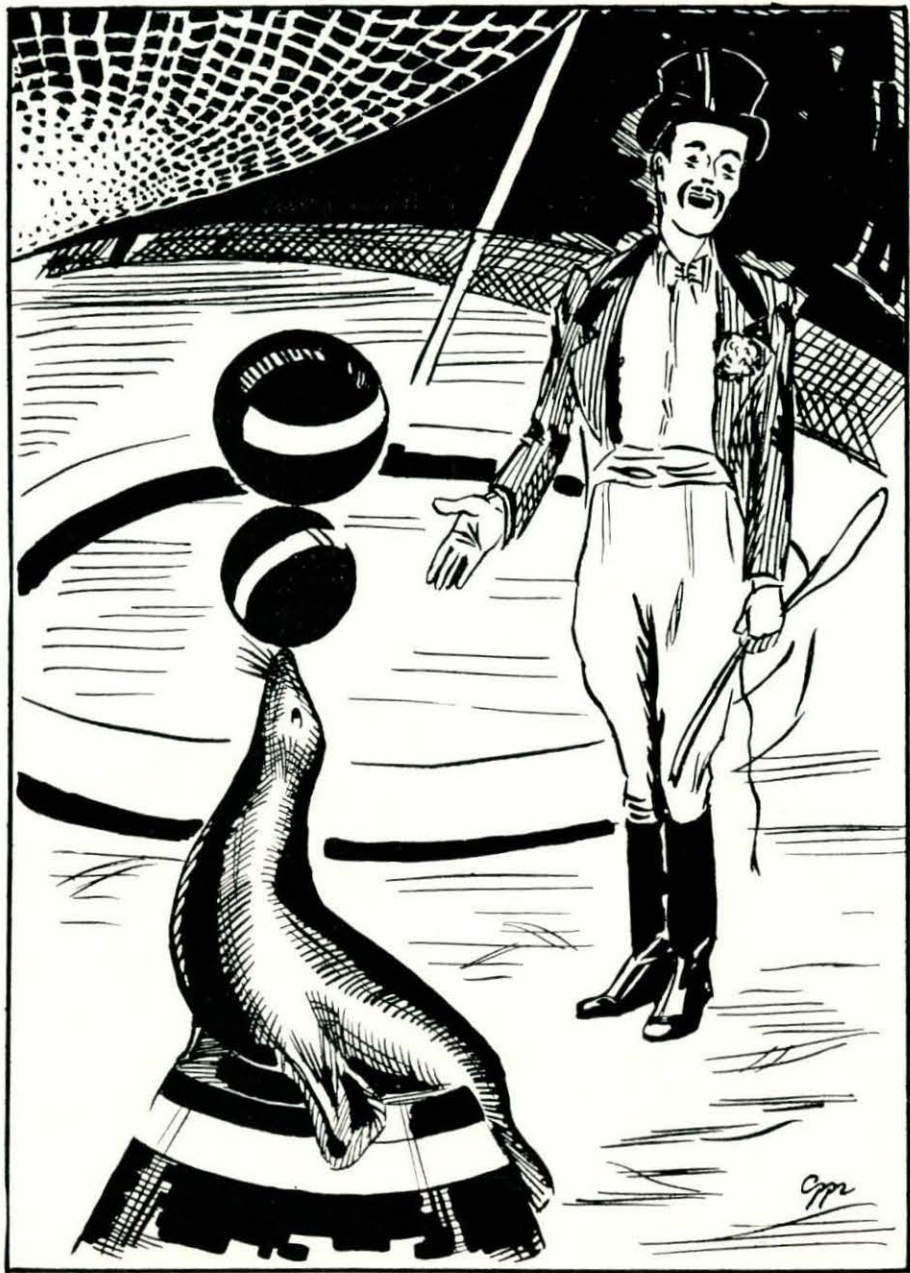


LUCIAN H. BURNS  
*Principal, Chelmsford High School*

## Faculty

*Every man has two educations—that which is given to him, and the other, that which he gives to himself. Of the two kinds, the latter is by far the most valuable. Indeed all that is most worthy in a man, he must work out and conquer for himself. It is that, that constitutes our real and best nourishment. What we are merely taught, seldom nourishes the mind like that which we teach ourselves.*

—Richter





C. EDITH MCCARTHY, B.S.ED.  
*Vice Principal  
Bookkeeping, Typewriting  
Salem Teachers College*



F. CHRISTINE BOOTH, A.B.  
*Latin  
Colby*



PROCTER P. WILSON, S.B.  
*Sciences  
Mass. Institute of Technology*



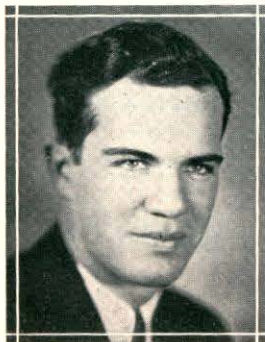
DAISY B. MACBRAYNE, A.B., A.M.  
*English  
Boston University*



MORRIS L. BUDNICK, A.B.  
*Mathematics  
Tufts*



GEORGE R. KNIGHTLY, A.B.  
*Social Sciences,  
Baseball  
Aurora College*



JOHN J. MACLAUGHLAN, Ph.B., A.M.  
*History, Basket Ball  
Holy Cross  
Boston University*



EARL J. WATT, A.B., A.M.  
*French, Athletic Director  
Harvard University*



CATHERINE W. MOONEY, B.S.ED.  
*Typewriting*  
*Salem Teachers College*



RITA RYAN, A.B.  
*English, Basket Ball*  
*Emmanuel College*



HELEN R. POLAND, A.B.  
*General Science, Biology*  
*Basket Ball*  
*Boston University*



E. PAUL GAUTHIER, A.B.  
*English, Latin, French*  
*Harvard University*



BEATRICE T. HOAR, A.B.  
*English, Geography*  
*Boston University*



GEORGE W. BOYCE, A.B.  
*History, Mathematics, Football*  
*Tufts*



M. MARION ADAMS  
*Supervisor of Music*  
*Lowell Teachers College*  
*Institute of Music Pedagogy*



CHRISTINA N. SIMPSON, R.N.  
*School Nurse*  
*Lowell General Hospital*  
*New York Polyclinic*



## "Chelmsford High"

'Tis hard to part from the old school  
Where many a friendship we've made,  
To play one's part on life's highway  
With hopes of "making the grade."

We have studied and played together  
Through the days we have gathered here,  
And they surely have gone by quickly  
Though their memories we shall always hold dear.

We shall wish we could live them over  
As we journey our paths through life,  
With hopes that our knowledge will help us  
Through laughter and sadness and strife.

No matter what be our vocation  
Or where in this world we may go,  
Let us all keep our thoughts on Chelmsford  
As a place we all loved to know.

Let's start with the earnest desire  
With its precepts to try to comply,  
And as members of this year's Alumni  
Keep on boosting for Chelmsford High.

—DONALD MARINEL '40



## Board of Editors

We sincerely hope this volume of the Chelmsford High School Year Book will serve to perpetuate in the minds of all pupils the happy days of those American lives herein represented. May these pages ever recall the pleasant experiences of all who have so fortunately shared the privileges offered by an American public school.

### *Seniors*

|                     |                 |
|---------------------|-----------------|
| Marilyn Bettencourt | Dorothy Hansen  |
| Gladys Bridgeford   | Doris Lapham    |
| William Coppen      | Patricia McHugh |
| Vernon Fletcher     | Dwight Trubey   |
| Wilfred Fremeau     | Glenn Wallace   |
| Donald Grant        |                 |

### *Juniors*

|                   |                  |
|-------------------|------------------|
| Robert Angus      | Claire Hazeltine |
| Mary Barron       | Agnes Hydusko    |
| Robert DeKalb     | Natalie Johnson  |
| Eileen Greenwood  | Gerald Lantagne  |
| Raymond Greenwood | Pauline Stephens |

Literary Advisers—Helen R. Poland, M. Rita Ryan

Business Adviser—C. Edith McCarthy

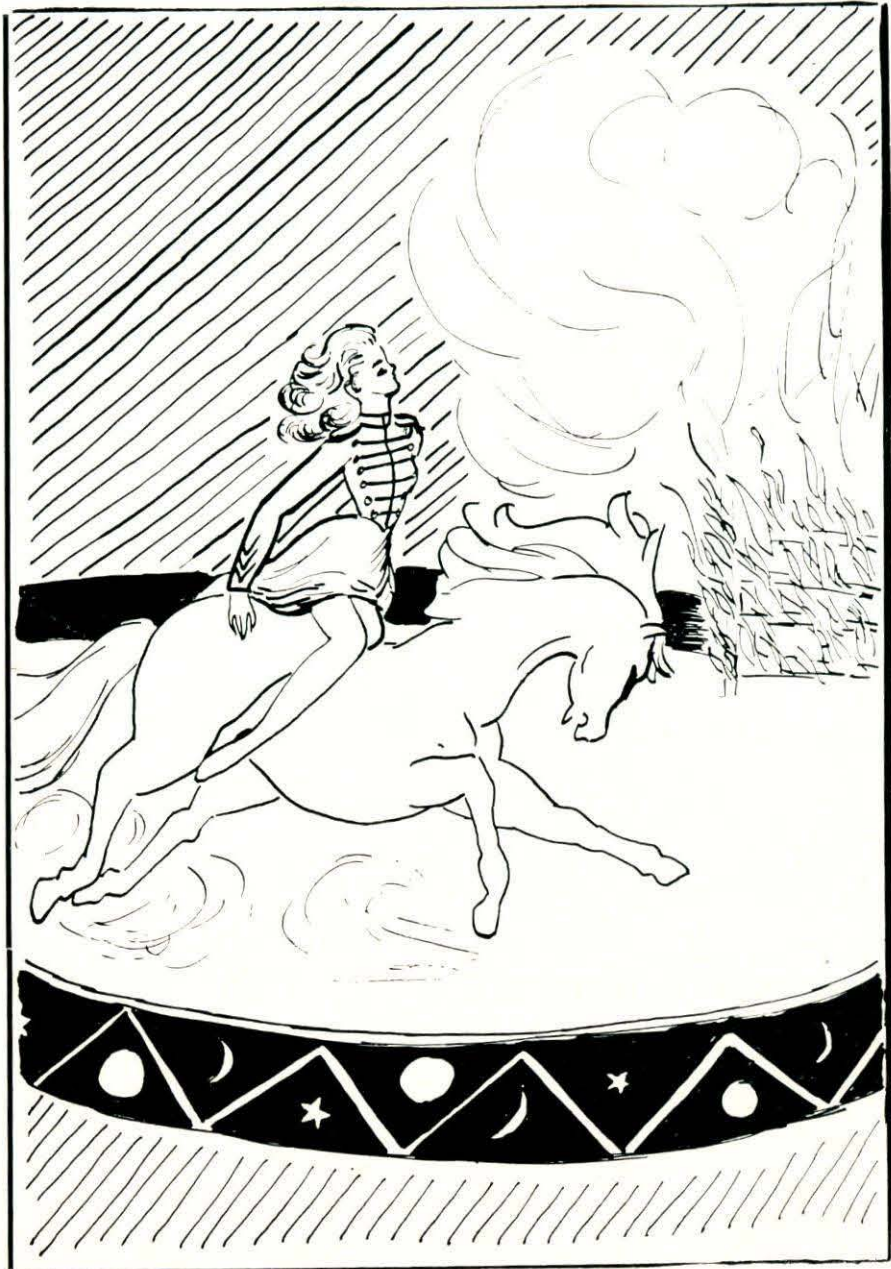




## Seniors

*Look not mournfully into the past,—it  
comes not back again; wisely improve the  
present—it is thine; go forth to meet the  
shadowy future, without fear and with a  
manly heart.*

*—Longfellow*





DONALD CAMERON GRANT

"Don"

*Class President '39; Honor Rank; A.A. President '39, A.A. Member-at-large '38, A.A. Member '36, '37, '38, '39; Football '36, '37, '38, '39; Basketball '38, '39, '40; Baseball '38, '39, Capt. '40; Year Book Staff '39, '40; Chemistry Club '39.*

A letter man in every sport—a popular leader in everything, despite his blushes—Beau Brummel—a master of ceremonies—the ladies' choice—destined for success.



MARILYN MARIE BETTENCOURT

"Menine"

*Class Vice-President '37, '39; Graduation Speaker; Class Marshal '39; D.A.R. Delegate; A.A. Member '36, '37, '38, Vice-Pres. '39; Senior Play; Basketball '38, Ass't Mgr. '39, Mgr. '40; Year Book Staff '39, '40; Chemistry Club, Pres. '38, '39; Debating Club '39; Latin Club Officer '37, '38, '39; Dramatic Club '39.*

Exemplary character—efficiency itself—refreshing sense of humor—lover of classical music—star contestant for any Prof. Quiz program—will reap a good harvest from her endeavors.



PATRICIA MARY McHUGH

"Patsy"

*Class Secretary '39; Graduation Speaker; A.A. Member '36, '37, '38, Sec. '39; Basketball '37, '38, '39, Capt. '40; Senior Play; Senior Prom Committee; Slide Rule Club; Chemistry Club, Sec. '40; Debating Club '38, '39; Year Book Staff '39, '40; Stunt Nite '38, '39; Operetta.*

An infectious laugh—Independent, spelled with a capital I—clear thinker—Coach McHugh—graceful jumper—loves discussions on the "night before"—into everything—the joy of her opponents in basketball, and how!



CHESTER ALBERT WOODWARD

"Chet"

*Class Treasurer '39; A.A. Member '36, '37, '38, '39; Baseball Manager '39, '40; Basketball '38, '39, '40; Senior Prom Committee; Chemistry Club '38; Business Manager, Senior Play '40.*

Prefers blondes from Billerica—a rabbit fancier—our candy man—"powder Chet"—custodian of the baseballs, bats, etc.—charges toll calls—a chorus boy—red top—gold basketball—flashes a merry smile.



ALFRED JOHN ANGUS

"Allie"

*A.A. Member '36, '37, '38, '39; Basketball '39, Capt. '40; Baseball '39; Football '39; Senior Prom Committee; Senior Dance Committee; P.A.D. Club.*

Captain of our champion basketball team—a collector of C's in sports—Sunday paper route—Chinese checker fan—enjoys sitting in a shady spot—sensationalist at the "Y"—a quick temper—a fellow the girls will wait for.

PAUL HENRY BEAUREGARD  
"P. H."

*A.A. Member '36, '37, '38, '39; Football '36, '39; Baseball '37, '38, '39, '40; Senior Dance Committee; Senior Prom Committee; P.A.D. Club, President.*

"Beaure"—brown wavy hair—collector of four-base knocks—consistent basketball fan—optimistic, mature judgment—custodian of the supply closet—that adhesive nose—fashionist—head escort in the corridors.



MICHAEL BELIDA, JR.  
"Gully"

*A.A. Member '39; Football Manager '39; Stunt Night '37.*

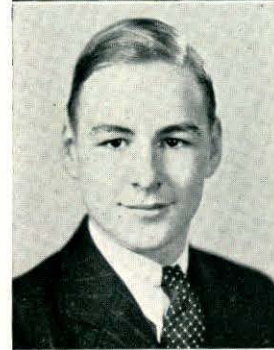
Short, stocky and square—always jesting with companions—fun in classes—yearns for trips from coast to coast—our big business man—penchant for being in the wrong place at the right time.



EDWARD HENRY BERG  
"Ed"

*Honor Rank; A.A. Member '36, '37, '38, '39; Football '39; Senior Prom Committee '40; Orchestra '36, '37, '38, '39; Debating Club '37; Eastern States Music Festival '39; Chemistry Club Vice-Pres. '38; Slide Rule Club '39.*

Intelligent—immature—enjoys surpassing (?) Fletcher's quips—scientist of renown—star with a trumpet—a Hitlerish lock of hair—radiant smiles—will go places.



ELSIE L. BISHOP

*Honor Rank; A.A. Member '39; Gym Class '40.*

Good swimmer—follower of Sonia Henie—four-star pupil—practical and thrifty—self-possessed, but not self-satisfied—always dependable.



IRENE BEATRICE BOUCHER

*Honor Rank; A.A. Member '39; Latin Club '37, '38, '39; Senior Prom Committee; Senior Play Committee.*

Harmony in dress, color, and disposition—serious thoughts, ably expressed—cherishes old friends and seeks new ones—example of gentility.





GLADYS MAY BRIDGEFORD

"Gladys"

Graduation Speaker; Class Secretary '37, '38; Year Book Staff '39, '40; Dramatic Club, Treasurer '38; A.A. Member '36, '37, '38, '39; Dramatic Club '38, '39; Senior Prom Committee; Senior Play Committee; Debating Club '37, '38; Reception Committee; Senior Dance Committee; Class Ring Committee.

Collector of souvenirs—honors as well as hearts—checker of late arrivals and survivals—versatile interests—favors basketball—band box appearance—composed and calm.



PEARL MARJORIE BROOKS

"Brooksie"

A.A. Member '36, '37, '38, '39; Operetta '37; Senior Play; Booster Day Committee, '36; Gym Class '40.

"My darling scatterbrain"—likes swing—jitterbug—page 42—five feet two—twinkling eyes—likes baby chicks—given to frequent laughter—Tewksbury lads—secretarial ambitions—healthy complexion.



KENNETH M. BUCHANAN

Chemistry Club '39; Slide Rule Club '39; P.A.D. Club; A. A. Member '36, '37, '39.

Quiet—resourceful—knows the art of self-defense—whistles out of turn—blushes too frequently—likes animals—remember the duck in Biology?—holds friendships.



EDITH ISABELLE BURNDRETT

A.A. Member '36, '37, '38, '39; Dramatic Club '39, '40; Booster Day Committee '37; Operetta '36; Dramatic Club Play '39; Chemistry Club '39; Stunt Night '40; Gym Class '40; Glee Club '36.

Box office appeal—takes her time—better late than never—a model from Vogue—leaves a string of broken hearts behind her—tinkling laughter.



MARY A. BURNS

Dramatic Club Play '40; Booster Day Committee '37; Class Ring Committee '39; Christmas Play '40; Stunt Night '37; A.A. Member '35, '37, '38, '39; Glee Club; Gym Class '40.

Mischievous—determined—likes a square deal—perfect figure—dancing eyes—nimble feet—Gibson girl coiffure—enjoys life.

VERNON LUKE BURTON

*A.A. Member '36.*

Likes to day dream—sports spectator—loyal pal—no feminine follower—prefers calmness to excitement—enjoys oral topics.



GERALDINE MARGARET CAHILL

"Jerry"

*A.A. Member '36, '39; Glee Club; P.A.D. Club; Senior Play Committee, Senior Play.*

To know her is to like her—industrious—delovely blonde—cheerful disposition—that southern drawl—future ski clothes designer—a benevolent expression—soft spoken.



L. JOAN CAHILL

*A.A. Member '36, '37, '38, '39; Glee Club '37, '38; Operetta '39; Dramatic Club '38; Debating Club '37; Stunt Night '38; Gym Class '40.*

Small, vivacious brunette—chatterbox—Keith Academy males—cheerful disposition—loves to dance—refreshingly frank—sings soprano—star dust in her hair.



HAZEL J. CANN

*A.A. Member '36, '37, '38, '39; Glee Club '37, '38; Dramatic Club '38; Gym Class '40.*

Margaret's constant companion—a buzzing bus pupil—likes vacations best—distaste for biology—cinema conscious—favors serious themes—furnishes original humor—good word for all of us.



MARGARET C. CAREY

"Peggy"

*A.A. Member '39; Glee Club '39; Gym Class '40.*

A smile for any advertisement—too reserved—avoids crowds—Hazel's comrade—travels northerly—prefers Fords—library patron—secretarial ambitions.





BARBARA ELLEN CLEGHORN  
"Barbie"

*A.A. Member '36, '37, '38, '39; Operetta '40; Stunt Night '40; P.A.D. Club; Dramatic Club '39.*

Peppy and happy—likes hair ribbons—Chelmsford's Maxine—a passion for bright colors, especially red—finds strong men amusing—very oomphatic—that cheer-you-up hello.



WILLIAM LAWRENCE COPPEN  
"Bill"

*A. A. Member '36; Senior Prom Committee; Senior Play Electrician; Chemistry Club '38, '39; Slide Rule Club '40; Stunt Night '40.*

"Bill"—elastic suspenders and sport clothes—checker champ—fishing enthusiast—master worker with a brush and pen—stating his rights in class meetings—faithful companion—physics whiz—everyone's friend.



HELEN VIRGINIA DONOVAN  
"Ginny"

*A.A. Member '36, '37.*

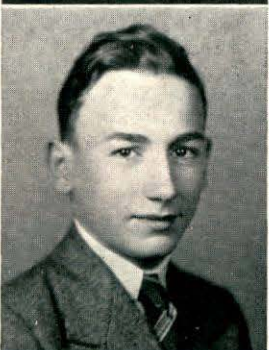
Red hair—industrious worker—knows her current events—sports observer—a walking fan—likes to drive a car—the essence of courtesies.



ROBERT A. FIRTH

*A.A. Member '36; Chemistry Club '38; Gym Class '40.*

A bashful, blue-eyed gent—plays basketball, baseball, and tennis for his own amusement—prefers to walk home from school—a bike rider—good natured—faithful student—enjoys the other fellow's jokes.



VERNON FLETCHER  
"Fletch"

*Graduation Speaker; A.A. Member '36, '37, '38, '39; A.A. Board, Freshmen member '36; A.A. Board, Senior member '39; Debating Club '37; Basketball Asst. Mgr. '39, Mgr. '40; Football, Asst. Mgr. '38, Mgr. '39; Year Book Staff '39, '40; Chemistry Club, Treas. '38; Class President '38.*

Small but mighty—loquacious and spirited—hates homework—no midnight oil—drawlish answers—foxy toward fallacies—well posted on local and national leagues—ability galore—humor a plenty.

MILLARD HARRIETTE FORD  
"Happy"

*A.A. Member '36, '39; Dramatic Club '37; Glee Club '36, '37, '38; Operetta '36, '40; New England Music Festival '39; Cheerleader '39; Choir '40; Latin Play '37; Chemistry Club '37; Gym Class '40.*

Full of fun and pep—cheering C.H.S. teams on to victory—singing away the blues—likes Houses—old fashioned dances in Acton—excellent swimmer and skater—mimic—pickle eater—Carlisle pals.



ELIZABETH FRANCES FOX

*Honor Rank.*

Wide-ranged giggle—bows and more beaus—chatterbox—divides time as others should—study before play—co-operative and sincere—always a cheerful greeting.



JOHN WILFRED FREMEAU  
"Frem"

*A.A. Member '36, '37, '38, '39; Football '36, '37, '38, '39; Baseball '38, '40; Chemistry Club '38; Year Book Staff '39, '40; Inter-Class Basketball '40; Debating Club '37, '38.*

Excellent disposition—ever-ready smile—pleasant to all—football man, baseball player, basketball noise maker—Oh, those dishes—Swedish interest!—collector of evening accessories.



ALTHEA ELIZABETH GARROW  
"Althie"

*A.A. Member '36, '37, '38, '39; Basketball '39; Cheerleader '38, '39.*

Little, but oh, my!—a locomotive for Chelmsford, hip, hip—trim and tidy—spurns hats and long stockings—energetic and able—patronizes all sports—self reliant.



GILBERT O. GAUDETTE  
"Gil"

*A.A. Member '36, '37; Stunt Night '40; P.A.D. Club Vice-President.*

The glars of fashion and the mold of form—winning smile—a little bit independent—borrows a Chevrolet every so often—rides horseback with ease—has favorites in all classes—never obtained his real stride.







JAMES R. GOLDEN

"Handsome"

*A.A. Member '38, '39.*

Black curls on his forehead—deep voice—clever skier—surprisingly sensitive—visits railroad station in North frequently—dry humor—outstanding general knowledge—future telegrapher—a fine fellow.



BENJAMIN JOHN GOLUBISKY

"Husky"

*A.A. Member '36, '37, '38, '39; Football '38, '39; Inter-class Baseball '37; Gym Class '40; Chemistry Club '38.*

Free-hearted chap—bulging muscles—football star in own right—slow to wrath—white sweater for special occasions—allergic to being conspicuous—keeps friends—coaching ability—worth while interests.



DONALD PARKER GRAY

"Don"

*Football '38, '39; A.A. Member '36, '37, '38, '39; Senior Prom Committee; Chemistry Club, Treasurer '39; Senior Play Stage Committee, Chairman; P.A.D. Club, Judge; Stunt Night '40; Slide Rule Club '39; Gym Class '40.*

Next case, please—those football shoulders—enormous hands—changes lady friends often—likes to laugh and does—skating enthusiast—stage director tendencies—a go-getter—behind the bars, in a bank.



JOHN ALBERT HALL

"Doc"

*A. A. Member, Westford '36; Chemistry Club '39; P.A.D. Club; Gym Class, Westford '36.*

Arguing ability—keeping up on all the news—confering with John M.—slick hair—happy-go-lucky—motto "why study"—study period cowboy—a demon for classics—checking at A.A. dances.



MILTON IRVING HALL

"Milt"

*A.A. Member, Westford '37; Science Club, Westford '37; P.A.D. Club; Chemistry Club '39; Inter-class Basketball '37; A.A. Member '38, '39.*

Modest to extreme—quiet disposition—delights in sports—enjoys the gullibility of others—good listener—industrious—manually efficient.

DOROTHY VIRGINIA HANSEN  
"Dot"

*Senior Prom Committee; Senior Play Committee; Senior Party Committee; P.A.D. Club; Chemistry Club '38; Dramatic Club '40; A.A. Member '37, '38, '39; Stunt Night '40; Year Book Staff '39, '40; Gym Class '40.*

Slender, tall, and oh so fair—gay, carefree, and debonair—for being modern she has a flare—her French pronunciation is more than rare—a rippling laugh fills the air.



WILLIAM JOSEPH HENNESSY  
"Bill"

*A.A. Member '38, '39; Chemistry Club '38, '39; Slide Rule Club '39; Football '39; Baseball '40; Interclass Basketball '40.*

Quick of foot—Irish eyes that smile—stacatto reading—football hero—slow but constant eater—a definite personality—member of Period 2 men's club.



BARBARA MARY HINES  
"Barb"

*Honor Rank; A.A. Member '36, '37, '38, '39.*

Always a bow in her hair—a constant flow of words—visits room 506 Sun Building—loves to dance the light fantastic at the C.Y.A.—can see the fun in life—a devoted friend.



GEORGE CURRIER HOOD, JR.

*A.A. Member '36, '38, '39; Chemistry Club '38, '39; Senior Play Committee; Stunt Night '40; Slide Rule Club '39.*

Tire patching—his bicycle seems to be part of him—a whiffle hair cut—a razor blade crease—a mind which he knows how to use—camera capers—dislikes French, skiing and dancing.



ROBERTA VIOLA HOWIE  
"Berta"

*A.A. Member '36, '37, '39; Operetta '36; P.A.D. Club; Glee Club '36.*

Dainty, dimpled, and demure—curly blonde hair—child-nursing—going on long walks—reading, favorite hobby—fondness for movie stars.





EDITH ELSIE JOHNSON

*A.A. Member '36, '37, '38, '39; Stunt Night '40; Dramatic Club '39; Gym Class '40.*

A pretty smile—a charming manner—bright eyes—sweet brunette—turns the boys' heads—"swinging it"—knows what a P.M. session is—red fingernails and red lips.



JULIAN STEPHEN KINNAL  
"Julie"

*Chemistry Club '38, '39; Stunt Night '38, '39; Orchestra '36, '37.*

Tall, indifferent—South of the Border air—takes us to the hills strumming his guitar—observes night life—comments casually—tolerant and friendly—passion for sleep.



JEAN KRIVETZ

*A.A. Member '36.*

Peaches and cream complexion—always immaculately apparelled—makes acquaintances slowly—dislikes Math—courteous—quiet—perfect photographer's subject—skater.



DORIS ELEANOR LAPHAM  
"Del"

*Honor Rank; A.A. Member '36, '37, '38, '39; Senior Play; Senior Prom Committee; Basketball '38, '39; Operetta '36, '40; Glee Club '36; Year Book Staff '39, '40; Dramatic Club '38.*

Statuesque—sincere in her pursuits—drums a merry tune—entertains friends from far away—ever a pleasant smile—promises to commercialize on her proficiency.



ROGER EDWARD LAPHAM

*A.A. Member '36; P.A.D. Club; Operetta '40; Choir '40; Christmas Play '39.*

Tall, dark, and handsome—his baritone voice—reserved, yet friendly—practical and thrifty—a flare for blue—likes blondes—gardening—he yearns for the sea.

ALBERT LEMAN  
"Shavie"

*Baseball '39; Dramatic Club '39, '40; Debating Club '38; Stunt Night '38, '40; Class Executive Committee '38; A.A. Member '36; Slide Rule Club '39; Chemistry Club '38, '39.*

Happy-go-lucky—has no worries—not much interested in girls—on the corridor patrol—takes in the highland and lowland on his bike—good will.



DANIEL HAMILTON LENNOX  
"Hammie"

*A.A. Member '38, '39; Senior Play; P.A.D. Club; Chemistry Club '38; Christmas Play '39; Basketball '39, '40; Operetta '40; Stunt Night '37.*

Patent-leather hair—quick grins—exploring vents—fouls—Marcellus—early riser—financial sense—restless feet—pal of all lads.



JOHN FLINT MANAHAN

*Baseball '39, '40; Chemistry Club '38, '39; Senior Play Committee; Inter-Class Baseball '37, '38; Inter-Class Basketball '40; A.A. Member '36, '37, '38, '39.*

Hail fellow well met—qualified and capable center fielder—frank opinions openly expressed—rainbow socks—dotes on short and long waves.



G. FREEMAN MANAHAN

*Honor Rank; Senior Play; A.A. Member '36, '37, '38, '39; Chemistry Club '38; Slide Rule Club '39.*

Punctual and steady—able to mix pleasure with business—laughing eyes—unconcerned manner—plaid shirts and gay socks—skier—actor—friend, indeed; yes, indeed!



DONALD A. MARINEL  
"Shavie"

*A.A. Member '36, '37, '38, '39; Debating Club '37, '39; Dramatic Club '39; Senior Play; Stunt Night '40; Booster Day Committee '36; Chemistry Club '39; Slide Rule Club '39.*

A regular fellow—dresses well—has an explosive laugh—dark eyes lucent smile—hot harmonica harmonizer—a menace to the public on a bicycle.





JOSEPHINE EVELYN McDONOUGH

"Jo"

*Basketball '37, '38, '39, '40; "C" Club '37; P.A.D. Club; A.A. Member '36, '37, '38, '39; Senior Party Committee; Senior Prom Committee; Inter-class Basketball '39.*

Tall and willowy—favors flat heels—neat dresser—heart-shaped face—high scoring basketball player—drops her shots in at random—has a constant companion—shower-baths—quick!



GERTRUDE LOIS MILLER

Lois

*A.A. Member '36, '38, '39; Basketball '38, '39; Operetta '40; Choir '40.*

"Lois"—singing ability—makes good fudge—lover of sports—tom boy—fixing other people's coiffures—laughs things off—always on the go—dashes to save seats for two on the bus.



FRANCIS G. MISKELL

"Mike"

*Baseball, Assistant Manager '37; Chemistry '39; Stunt Night '37; P.A.D. Club; Inter-class Basketball '40; A.A. Member '36, '37, '39.*

"Mike"—a great gift of gab—a laborious youth—financial backer—talented in dramatics—a second Frankie Brimsek—humor and wit carry his day—bashful—a clever soda jerker—never a dull moment—honesty is his policy.



JOHN VINCENT MURPHY

"Sheriff"

*P.A.D. Club; Chemistry Club '38; Christmas Play '39; Slide Rule Club '39; A.A. Member '36, '37, '38.*

Local John Barrymore—chemistry funster—wavy hair—slow but sure—industrious—cheerful—long-suffering—sheriff of North Chelmsford.



VIRGINIA LOUISE NATH

"Ginny"

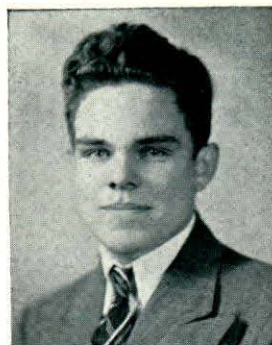
*Dramatic Club '38, Secretary '39; Debating Club '37, '38; A.A. Member '36, '38, '39; Stunt Night '38, '40; Chemistry Club '38; Slide Rule Club '39; Gym Class '39.*

Short—sweet—shy—sagacious—self-possessed—skiiier—wrinkles her nose—likes to be teased—has a swinging gait—promising future as a chemist.

HOWARD LESLIE NICKERSON, JR.  
"Nick"

*A.A. Member '36, '37, '38, '39; Chemistry Club '38; Slide Rule Club '39; Operetta '40; Football '39; Special Choir '36, '40; Christmas Play '40; New England Music Festival '39, '40.*

Singer, actor, classmate, and friend—ever ready for a joke and fun—neighborly—cooperative spirit—caddies now and then—gridiron gladiator—Ping Po!



PAULINE ROSE NOEL  
"Paul"

*A.A. Member '39; Dramatic Club '39; Gym Class '40.*

Sophisticated—calm, cool, and collected—red lips—offers no criticisms—a far away look in her eyes—secretarial desires—making figures on ice.



STASIA R. OCZKOWSKI

*Honor Rank; A.A. Member '37, '38, '39; Chemistry Club '38; Glee Club '39; Dramatic Club '40; Gym Class '40.*

Dainty—diminutive—soft voice and gentle ways—delight of any teacher with her ready answers and unassuming air—has no love for history—asset to any business office.



DOLORES MARIE O'NEIL

*Glee Club '38.*

Dark hair and darker eyes—rather stoic—consistently conservative—precise in her work—blushes—embarrassed smile—prefers roller skating—waiting for her ship to come in!



IRENE CLARA PELLETIER

*Honor Rank; A.A. Treasurer '39; A.A. Member '36, '37, '38, '39; Secretary of Class '38; Senior Play; Senior Prom Committee; Stunt Night '39; Glee Club '36; Operetta '36; Dramatic Club '37, '38, '39, Secretary '38.*

Full of pep, vim, and vigor—big brown eyes—good marks—an erect carriage—spike heels, staccato tapping—gracious manners and efficiency combined—typical petite French Miss.





GLENDYSE PETERSON

A.A. Member '36, '37, '38, '39; Chemistry Club '39; Booster Day Committee '37; Stunt Night '40; Dramatic Club '39; Latin Club '39; Aedile '37, '38; Senior Prom Committee; Senior Play Committee; Class Vice-President '38; Graduation Decorating Committee '39.

Beauty and good breeding—Palmolive skin—able student—often seen in a chauffeured limousine—becoming clothes—personality and poise for a nurse's uniform.



GEORGE JAMES POPE

"X"

A.A. Member '37, '39; Chemistry Club '38, '39; Dramatic Club '37; Slide Rule Club '39; Stunt Night '40.

"X"—freckle champion of seniors—an infectious sense of humor—always in mischief—camera fan—tries to boycott school.



ESTHER V. QUINBY

A.A. Member '39; Dramatic Club '39.

A pleasant chatterer with her special friends—avoids crowds—pinkens easily—enjoys singing in the church choir—wish we knew her better.



ERNEST A. RICHARDSON

Honor Rank; A.A. Member '39; Senior Play Cast.

"Ernie"—striped sweater—a girl's ideal—model French student—keeping on the friendly side of everyone—decorating his Ford car up—conversing with the fairer sex, continually—making the honor roll—new comer—old friend.



WALTER EVERETT ROSENDALE

"Rosie"

A.A. Member '36, '37, '38, '39; Dramatic Club Play '38, '39; P.A.D. Club; Debating Club '38.

School girl complexion—wavy hair—stocky—always happy—stage presence—talking without permission—exceedingly polite—salesman of stocks and bonds.

WALLACE AMOS SANDERS  
"Red"

*A.A. Member '38, '39; Football '39; P.A.D. Club; Inter-class Basketball '40.*

Quiet, enjoyable companion—blushes—prefers the background—well built for football togs—not averse to the attention of the Boston Road girls.



MARY L. SANTOS

*Honor Rank; Dramatic Club '39.*

Demure—flashing eyes—flair for sweaters—not much talk—intelligent in her studies—reserved—an intensity of purpose—masks her emotions.



AGNES PEARL SAUNDERS

*A.A. Member '36; Dramatic Club '37, '38; Chemistry Club '39; Slide Rule Club '39.*

Unobtrusive manner—earnest student—utter lack of pretense—unruffled temperament—prefers chocolate cake—nursing aspirations.



LOVANIA MARY SIMPSON

*Chemistry Club '38; Dramatic Club '37.*

Believe it or not, she giggles!—drowns dreamily during deep discussions—lets others do the talking; and the singing as well—baby of the family—naturally reserved.



PATRICIA SMALL  
"Pat"

*Honor Rank; A.A. Member '39; Senior Play; Operetta '40; Dramatic Club '38, '39; Senior Play Committee.*

Intelligent—up to the minute—likes good books—many friendships—blushes furiously and frequently—Aunt Abbie—curly blonde tresses—radiant health.







HAROLD CLIFTON SPEED, JR.

"Jerry"

*Senior Prom Committee; Operetta '39; A.A. Member '36, '37, '38, '39; Stunt Night '40.*

Taciturn chap—steady listener—definite likes and dislikes—fire fighter—enviable locks—aeronautically-minded.



IRMA DOROTHY STANTON

*Debating Club '36, '37; Operetta '36, '40; Dramatic Club '38, '39; A.A. Member '36; Class Treasurer '36; P.A.D. Club; Glee Club '36.*

Sedate sophisticate—gracious smile—shoulder length tresses—spontaneous humor—appreciates music—manifests kindness to all.



ETHEL GERTRUDE STROBEL

*A.A. Member '36, '37, '38, '39; Senior Prom Committee; Senior Play Committee; Senior Party Committee; Dramatic Club '39, '40; P.A.D. Club, Secretary; Basketball '39, '40; Stunt Night '40.*

Dazzling smile—various hair coiffures—enjoys activities—basketball guard—dances the latest steps—life of the party—does justice to Vogue fashions.



WILLIAM J. SULLIVAN

"Sully"

*A.A. Member '36, '37, '38, '39; Football '38; Chemistry Club '38, '39; Debating Club '37; Inter-class Baseball '38; Slide Rule Club '39.*

Talkative—pleases young and old—mistaken for a flirtationus gent—ardent stage show fan—heavy beard—mellow voice—trader by nature—realizes the value of a dollar.



FREDERICK G. TAYLOR

*Honor Rank; Chemistry Club '39, '40; Senior Play; A.A. Member '36, '37, '38, '39; Slide Rule Club '40; Stunt Night '38, '40.*

Calm and affable—well-combed hair—a cat lover—guitar playing—driving his car in a heavy fog—doing homework five minutes before class—a future research chemist—his perfect technique in the play.

### RUTH MARION THOMPSON

*P.A.D. Club; Operetta '37; Glee Club '37, '38; A.A. Member '36.*

Dreamy dark brown eyes—curly black tresses—shy and reserved—casts side glances at color captains—spare time divided between practicing the bugle and studying office forms.



### DWIGHT VICTOR TRUBEY

*Honor Rank; Orchestra '36, '37, '38, '39; Dramatic Club Orchestra '38, '39; Chemistry Club '39; Year Book Staff '40; Debating Club '38; A.A. Member '36, '37, '39; N.E. Music Festival '40; Class Ring Committee '39; Slide Rule Club '40.*

Benign—a gentleman and a scholar—impartial opinions—favors poultry—accomplished violinist—warbles many a lilting tune—a good companion.



### JOHN WESLEY TRUBEY

*Dramatic Club '37, '38, '39; Orchestra '38, '39; A.A. Member '36, '37, '39; Dramatic Club Orchestra '38, '39; Latin Club '36, '37; Chemistry Club '38, '39; Slide Rule Club '39.*

Strange upper lip on John this year—the child is growing up—snaps people in natural poses—likes cream puffs, sometimes—orchestra leader—good fellow.



### GLENN L. WALLACE

“Ginsburg”

*Chemistry Club '38, '39; Slide Rule Club '39; Year Book Staff '39, '40; Booster Day Committee '36; Debating Club '38; Dramatic Club '37, '38, '39; Latin Club '37; A.A. Member '36, '37, '38, '39; Stunt Night '37, '39.*

“Mr. Moto”—ace camera man—mouth wagging—slicks hair back—ear to ear grin—a student in spite of himself—an inquiring mind—a humorist at heart.



### NORMA ORDWAY WIGGIN

“Wiggie”

*Glee Club '36, '37; Operetta '36, '40; Debating Club '37; A.A. Member '36, '37, '39; Senior Prom Committee; Senior Play Committee; Chemistry Club.*

Smiling eyes—second Galli Curci—steak dinners with the “Pontiac” friends—detests being call “A spoiled child”—always bustling around—efficient.





ELLSWORTH A. WINNETTE

*Graduation Speaker; A.A. Board '37, '38, 2nd Vice President '39; Football '36, '37, '38, Captain '39; Chemistry Club '38, '39; Slide Rule Club '40; Stunt Night '38, '40; Reception Committee '39; A.A. Member '36, '37, '38, '39.*

"Al"—four letters in football—big and brawny—shuffling along—model airplanes—indefatigable—idol of the women—rattletrap car with temperamental battery—expression when he jitterbugs—a future coast guard.



VINCENT L. WRIGLEY

"Vin"

*Football '36, '38, '39; P.A.D. Club; A.A. Member '36, '37, '38, '39; Baseball Manager '36.*

"Vinney"—never crosses his bridges till he comes to them, late—size 15 football shoes—thumb pointed to North Chelmsford — happy-go-lucky hitch-hiker — champion catcher-up-of-sleep-in-class.



JULIA YESCHANIN

*P.A.D. Club; A.A. Member '39.*

"Her hair is no more sunny than her heart"—rapid typist—neat—fragile and fair—good natured—operates locker room salon for disheveled "hair-do's".



LEONA VINCENTINA ZABIEREK

"Tina"

*A.A. Member '37, '40; Latin Club '38, '39; Dramatic Club '39; Chemistry Club '39; Slide Rule Club '40; Basketball '36.*

Unhurried walk—considerate of others—ready and willing—calm as night—pleasing smile—nice to know.



NICHOLAS PETER ZAHER

"Nick"

*A.A. Member '38, '39.*

Coal black wavy hair—a runner—always arguing—intensely interested in the war—bumping around in a Model T—an earnest fellow and a hard worker.



## Class Ode

Four pleasant years we have studied here,  
Four years of mirth and gladness,  
And now with joyous hearts and tears,  
We say "farewell" with sadness.

Though some may not have reached their goal  
One never heard them sigh,  
They struggled on thru toil untold,  
At our dear Chelmsford High.

Fond Alma Mater we praise thee,  
With hands and hearts so true,  
And as our future bids us flee,  
We give our thanks to you.

No matter what we choose to do  
Where e'er our life work starts,  
Our thoughts will always be with you  
Long after we depart.

So C. H. S. we leave thee,  
Each senior to do his best  
We bid farewell forever  
Farewell to C. H. S.

—EDITH BURNDRETT '40

## Class of 1940

Four years ago—no more, no less—  
A group of Freshmen came to C. H. S.,  
They were all ready and eager to learn,  
And studied until their brains did burn.

One year later, back they came,  
Another year's learning to enter their brain.  
Now they were Sophomores, not so shy,  
With their ambitions soaring high.

In thirty-eight again they came,  
The good old sheepskin still their aim.  
They labored and toiled with some time to play,  
Ever the same crowd, jolly and gay.

And now we are ending the year of years,  
In which we part with sorrow and tears,  
We'll ever remember those four short years,  
Schoolmates and teachers we'll always hold dear.

—PAUL BEAUREGARD '40



## Tribute to Mr. MacLaughlan

Should auld acquaintance be forgot  
And never brought to mind  
As Mr. MacLaughlan's basketball team  
And its victories of '39?

Not one game lost in all games played  
Plus the tournament at M. I. T.,  
It sure was quite an honor  
For our Chelmsford High to see.

And then one day, through the papers,  
We received a heavy blow,  
Our history teacher was leaving us,  
As all you people know.

We salute you, Mr. MacLaughlan,  
And know you'll always be,  
The greatest teacher in the whole wide world,  
Of American History.

—GERADLINE CAHILL '40



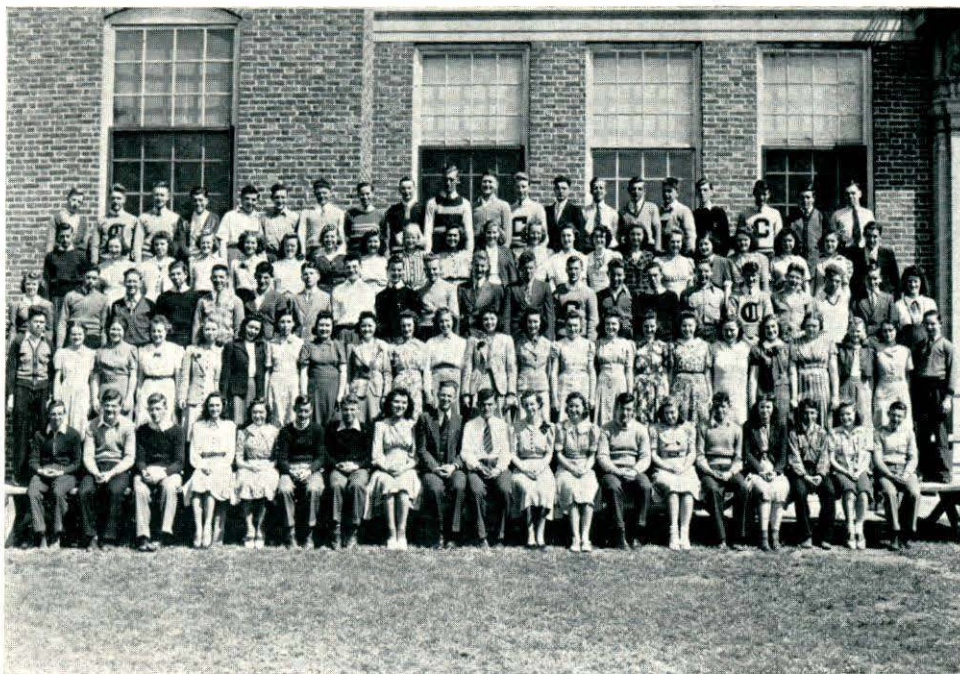
## Undergraduates

*The improvement of the understanding is for two ends: first, our own increase of knowledge; secondly, to enable us to deliver and make out that knowledge to others.*

*—Locke*







## Junior Class

Peter McHugh, President  
 Charles Campbell, Vice-President  
 Natalie Johnson, Secretary  
 Agnes Hydusko, Treasurer

Abrahamson, Robert  
 Angus, Robert  
 Armitage, Betty  
 Babcock, Eric  
 Barron, Mary  
 Beaubien, Herbert  
 Beauregard, Raymond  
 Berubee, Rodney  
 Bickford, Stuart  
 Bicknell, Gertrude  
 Bill, Lucille  
 Blodgett, Fred  
 Boutilier, Mary  
 Bowen, Doris  
 Butters, Ruth  
 Cochrane, Gordon  
 Dane, Constance  
 Davidson, Walter  
 DeKalb, Robert  
 Donovan, Gloria  
 Doole, James  
 Dows, Norma  
 Ducharme, George  
 Dunigan, John  
 Dupuis, Ruth  
 Eddy, Rita

Fantozzi, James  
 Fitzpatrick, Neil  
 Foster, Marion  
 Foster, Virginia  
 Fremeau, Louise  
 Garrow, Jane  
 Gaudette, Lucille  
 George, Parker  
 Giras, Steve  
 Gorton, Robert  
 Greska, Francis  
 Greenwood, Arthur  
 Greenwood, Eileen  
 Greenwood, Raymond  
 Halentic, Emile  
 Hardman, George  
 Hazeltine, Claire  
 Hoey, Ernest  
 Hunt, Bernard  
 Johnson, Astrid  
 Jones, Melvin  
 Karafelis, Arthur  
 Karafelis, Mabel  
 Kiberd, Barbara  
 Kinch, Mildred

Kinnal, Olga  
 Knox, Corinne  
 Langtagne, Gerald  
 LaRock, C. Norman  
 Lawson, Shirley  
 LeBourdais, Armand  
 Leslie, Frances  
 Ludwig, Robert  
 Marshall, Avis  
 McEnaney, Frank  
 McGeown, Anna  
 McLellan, Ruth  
 Messier, Theresa  
 Michaud, Roland  
 Miller, Alice  
 Miner, Mary  
 Northam, Virginia  
 Moss, Florence  
 Mueller, Lona  
 Mullen, Doris  
 Palmer, Elizabeth  
 Parlee, Edward  
 Pepin, Everett  
 Pettazoni, Paul  
 Pickles, Marion

Pond, Dorothy E.  
 Rafferty, James  
 Riopelle, Arthur  
 Russell, Chester  
 Sereduk, George  
 Sherman, Warren  
 Smith, Arlene  
 Smith, Norman  
 Spaulding, William  
 Stanton, Frances  
 Stephens, Pauline  
 Straughan, Jeannette  
 Sullivan, Francis  
 Sullivan, John  
 Swanson, John  
 Symmes, Allan  
 Symmes, Janet  
 Taintor, Annabelle  
 Taintor, Evelyn  
 Trubey, Alton  
 Trubey, Marshall  
 Tucke, Harold  
 Vondal, Luenna  
 Winters, Stanley  
 Wright, Stella



## Sophomore Class

Henry Zabierek, President

Wesley Harper, Vice-President

Evelyn Smith, Secretary

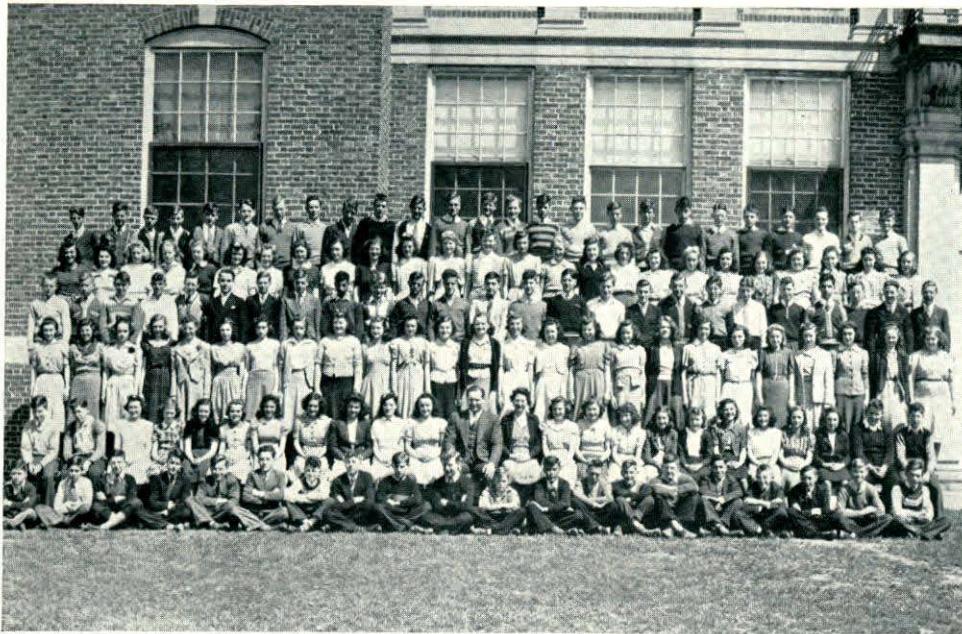
Gena Makey, Treasurer

Abbott, Lois  
 Adams, Edna  
 Adle, Paul  
 Alukonis, Jennie  
 Archibald, Helen  
 Babcock, Dorothy  
 Barris, Robert  
 Barron, Rita  
 Beaubien, Dolores  
 Belida, Helen  
 Bentas, Arthur  
 Blackie, Harold  
 Boutilier, Earl  
 Brotz, Roy  
 Byron, George  
 Campbell, Robert  
 Carey, Elliott  
 Christopoulos, Alice  
 Christopoulos, Mary  
 Clark, Allan  
 Coleman, Patricia  
 Comer, Edward  
 Coppen, Eleanor  
 Crowell, Elmer  
 DeCarteret, Grace  
 Desmond, William  
 Ducharme, Alice  
 Eriksen, Virginia  
 Fadden, Ethel  
 Fallon, Patricia  
 Ferreria, Clementine

Fitzpatrick, Norma  
 Fontes, Rita  
 Fox, Edward  
 French, Bernard  
 Gervais, Irene  
 Giras, Katherine  
 Gorton, James  
 Griffin, Everett  
 Hall, Bradley  
 Harvie, Dorothy  
 Hill, Robert  
 Hovencamp, David  
 Howie, Margaret  
 Howland, Gloria  
 Hughes, Marion  
 Hulslander, Ralph  
 Jamros, Reed  
 Kelley, Harlan  
 Kerins, Raymond  
 King, Marion  
 Kiskey, Anthony  
 Klonel, Neland  
 Knox, John  
 LaFerriere, Claire  
 Lambert, Arthur  
 Lee, Richard  
 Lee, Robert  
 LeMay, Claire  
 Leonard, Edward  
 Loisselle, Lucian  
 Malloy, Robert

Marchand, Yvette  
 Marr, Roland  
 Matley, Eleanor  
 McClure, William  
 McEnaney, Herbert  
 McGeown, Agnes  
 McHugh, William  
 McMaster, Charles  
 McMaster, Shirley  
 Messer, Constance  
 Messer, Virginia  
 Miller, Forrest  
 Miller, Raymond  
 Mills, Alice  
 Monahan, Patricia  
 Monette, Mary  
 Monette, Rita  
 Morrison, Haven  
 Murphy, Paul  
 Narus, Jennie  
 Nickerson, Shirley  
 Nobrega, Peter  
 Paignon, Phyllis  
 Panessiti, Joseph  
 Pascal, John  
 Pedersen, Ralph  
 Peirce, Charles  
 Pelletier, Charles  
 Pentedemos, George  
 Pepin, Gerald  
 Pierro, Stella

Posniak, Jennie  
 Rafferty, Rose Mary  
 Reedy, Helen  
 Riley, Marjorie  
 Robertson, Richard  
 Russon, Wallace  
 Saunders, Raymond  
 Scott, Clarice  
 Sereduk, Gloria  
 Simard, Roland  
 Simpson, Stanley  
 Smith, Bruce  
 Smith, Prescott  
 Spaulding, Ruth  
 Speed, Lincoln  
 Stanewicz, Lena  
 Stone, Barbara  
 Stott, Helen  
 Straughan, Robert  
 Straughan, Theresa  
 Sutherland, David  
 Svenson, Charles  
 Taintor, Albert  
 Thurber, Theresa  
 Trubey, Lillian  
 Trull, Marshall  
 VanLunen, Lloyd  
 Vrouhas, James  
 Wilcox, J. Alden  
 Williams, June



## Freshman Class

|                     |                      |                      |                       |
|---------------------|----------------------|----------------------|-----------------------|
| Abrahamson, Doris   | Cummings, George     | Jacobs, Catherine    | Peirce, Donald        |
| Allard, Jeanette    | Daughraty, John      | Jones, Doris         | Pelton, Donald        |
| Allard, Lucille     | DeCarteret, Clarence | Jones, Garvin        | Pettersen, Birger     |
| Anderson, William   | DeKalb, Francis      | Kiberd, Bryce        | Potter, Phyllis       |
| Arnold, Alma        | Delmore, Francis     | Koford, Janice       | Quintin, Leonard John |
| Ayotte, Elsie       | Desmarais, George    | Kolesnikoff, Emerson | Rabida, Laura         |
| Baldwin, Shirley    | Dirubbo, Jerry       | Knox, Margaret       | Rafferty, Richard     |
| Ballinger, F. Edwin | DiRuzza, Beatrice    | Lakin, Cora          | Rediker, Lawrence     |
| Barber, Eugene      | Duffy, Kathleen      | Laton, Dexter        | Reis, Robert          |
| Baxter, Joan        | Dutton, Lewis        | LeClair, Mildred     | Rhodes, Gwendolyn     |
| Beaulieu, Arnold    | Dutton, Nelson       | Leedberg, Harry      | Roberts, Pauline      |
| Beauregard, Mary    | Emerson, Martha      | Leslie, Thomas       | Rooney, Claire        |
| Belanger, Evelyn    | Farrell, Edward      | Libbee, Charles      | Russell, Evelyn       |
| Bentas, Costas      | Ferreira, Charles    | Mason, David         | Russell, Corinne      |
| Berg, Natalie       | Finnegan, Blair      | McMaster, Wilfred    | Russon, Mona          |
| Borden, Josephine   | Firth, Harold        | McNulty, John        | Sargent, Dorothy      |
| Borodowka, Peter    | Fletcher, Shirley    | McSheehy, John       | Sargent, Grace        |
| Boyd, Shirley       | Fox, Virginia        | Miller, Charles      | Scobie, Phyllis       |
| Braman, E. Esther   | Gauthier, Edward     | Molloy, Fay          | Seibert, Janet        |
| Bridgford, Barbara  | Gendreau, Gertrude   | Moore, Kathleen      | Shuhany, Elizabeth    |
| Brooks, Norman      | Gill, Louise         | Morris, Ruth         | Simm, Barbara         |
| Burton, Phillis     | Gouvaia, Louise      | Mullen, Louise       | Smith, Doris          |
| Byron, Grace        | Grant, Deborah       | Nelson, Priscilla    | Smith, Gertrude       |
| Campbell, Robert    | Hafey, William       | Newton, Elinor       | Smith, Phyllis        |
| Capuano, Camilla    | Haire, Charlotte     | Niemaszzyk, Joseph   | Sousa, Clarice        |
| Carkin, Jacqolyn    | Hammond, Carol       | Nilson, Emil         | Sullivan, Mary Rita   |
| Carll, Edmund       | Hanchette, Ruth      | Noon, Barbara        | Swallow, Sallie       |
| Carter, Gloria      | Hannaford, Louis     | Noel, Francis        | Valentine, Patricia   |
| Caton, Robert       | Hansen, Lillian      | Norton, Mark         | Vayo, Rita            |
| Champagne, Gloria   | Hardman, John        | Nystrom, Frederick   | Welch, Virginia       |
| Clayton, Harold     | Harmon, Raymond      | Palmer, Thomas       | Wheeler, Mildred      |
| Coburn, Shirley     | Hill, James          | Parker, Walter       | Woodfall, Janette     |
| Coleman, Ralph      | Hodgson, Edwin       | Patenaude, Warren    | Wright, Lois          |
| Cott, Allan         | House, Walter        | Pearson, Emile       |                       |



## Our Privilege

What a privilege is ours  
To live in a land that's free,  
Where beauty lies like flowers  
Round many a budding tree;  
Where the silence of the morning  
Is not broken by a blast  
Of fire and smoke, or warning  
Of an enemy flying past.

Ah, the privilege is ours  
For we sit in comfort here,  
While each minute and each hour  
Hundreds are dying over there.  
We leave our homes each morning  
Without fear or concern,  
We need not fear for bombing,  
Home will be there when we return.

Yes, the privilege is ours  
I'm sure you'll all agree,  
So when the night time towers  
O'er meadow, land, and sea,  
Won't you offer a little prayer,  
As you bow on bended knee,  
Won't you offer a little prayer  
For those less fortunate than we?

—LILLIAN A. TRUBEY, '42



Chelmsford High School Athletic Association





## Athletic Association Board

*President*—DONALD GRANT

*1st Vice-President*—MARILYN BETTENCOURT

*2nd Vice-President*—ELLSWORTH WINNETTE

*Secretary*—PATRICIA MCHUGH

*Treasurer*—IRENE PELLETIER

*Member-at-Large*—ROBERT DEKALB

*Senior Member*—VERNON FLETCHER

*Junior Member*—GORDON COCHRANE

*Sophomore Member*—VIRGINIA ERIKSEN

*Freshman Member*—VIRGINIA FOX

*Faculty Director*—EARL J. WATT

*Coaches*—RITA RYAN, HELEN POLAND, GEORGE BOYCE,  
JOHN J. MACLAUGHLAN, AND GEORGE KNIGHTLY



# Athletic Association

The Chelmsford A.A. wasted no time in getting started. Upon entering school this September, we were greeted by Mr. Watt handing out plans of the new building to keep students and teachers from getting lost.

Continuing, an afternoon dance was run. A local orchestra furnished the music, and a good time was had by all.

Booster Day was a great success. After the football team had defeated a fighting Dracut eleven 3-0, students from both schools returned in the evening to the victory dance. Prize dances and refreshments helped keep up the happy spirit which prevailed over all.

The basketball teams opened their seasons in the new gym, and enjoyed a very successful year. The girls blossomed forth in new royal blue jackets bought by the A.A., which add color to their appearance. Our boys' basketball team was one of the best in the state. It represented the school in the M.I.T. Tournament for which four bus loads of students attended as royal rooters. In recognition of their splendid work, the A.A. voted gold basketballs for each player.

While we are proud of our new gym something should be done about the seating plan because of the overflowing crowds which attend the basketball games. We hope in the near future that the school committee will see the necessity of having bleachers to comfortably accommodate the spectators.

We also extend our sincere thanks to our coaching staff of which Chelmsford has every reason to be proud. Sportsmanship is the thing that is stressed, win, lose or draw. For this reason Chelmsford teams are respected in other towns.

Our annual "Stunt Night" was well attended and enjoyed by many parents and students. The Juniors won the cup for the best stunt, but the other classes also provided interesting entertainment. This party also had a touch of sadness to it because it was the farewell party of Mr. MacLaughlan, our basketball coach. Words cannot describe our reluctance to part with Mr. MacLaughlan, coach, teacher, and a true friend of all.

C.H.S. has every reason to be proud of the A.A. Starting the season with a balance of \$272.02, on May 1st, after buying gym equipment, footbaths, and other things, the balance was over \$700. The A.A. was proud to contribute the sum of \$31.37 to the National Foundation for Infantile Paralysis. The number of students enrolled as members was 262, largest in C.H.S. history.

The A.A. wishes to thank all the students and parents who in any way helped them, and we hope more students will become members in the future.

And, Mr. Watt, we send to you our heartfelt thanks for the long and tedious hours you have spent for our benefit. We look forward to working with you in helping to push the A.A.'s success.

Long live the A.A. at Chelmsford High School.

Congratulations to the following members who earned awards during the 1939-1940 season:

## ATHLETIC AWARDS

### Football

|                             |                    |                  |
|-----------------------------|--------------------|------------------|
| Ellsworth Winnette, Captain | Benjamin Golubisky | Howard Nickerson |
| Alfred Angus                | Donald Grant       | Paul Pettazoni   |
| Herbert Beaubien            | Donald Gray        | Chester Russell  |
| Paul Beauregard             | William Hennessy   | Wallace Sanders  |
| Edward Berg                 | Franklin Jones     | George Sereduk   |
| Gordon Cochrane             | Francis McEnany    | Arthur Swanson   |
| Wilfred Fremeau             | Peter McHugh       | Alan Symmes      |

Michael Belida, Vernon Fletcher, *Managers*

James Gorton, Charles McMaster, *Assistant Managers (numerals)*

### Boys' Basketball

|                       |                 |                  |
|-----------------------|-----------------|------------------|
| Alfred Angus, Captain | Donald Grant    | Edward Leonard   |
| Robert Angus          | Garvin Jones    | Chester Woodward |
| Gordon Cochrane       | Hamilton Lennox | Henry Zabierek   |
| James Doole           |                 |                  |

Vernon Fletcher, *Manager*

George Ducharme, William McHugh, *Assistant Managers (numerals)*

### Girls' Basketball

|                          |                                     |               |
|--------------------------|-------------------------------------|---------------|
| Patricia McHugh, Captain | Claire Hazeltine                    | Ethel Strobel |
| Jane Garrow              | Josephine McDonough                 | Janet Symmes  |
| Eileen Greenwood         | Pauline Stephens                    |               |
|                          | Marilyn Bettencourt, <i>Manager</i> |               |

Stella Wright, *Assistant Manager (numerals)*

Forty-Seven





## Boys' Basketball

The Chelmsford High School basketball team established a record this year of which everyone may be proud. The boys not only won the trophy in the Suburban League, but also went through the season undefeated. To top it all, the Chelmsford hoopsters were invited to the M.I.T. tournament. Here the team was defeated in the semi-finals by the strong Framingham combine, 40-30. In spite of this defeat the quintet was highly commended for its game fight and sportsmanlike conduct.

The entire Chelmsford team was named as the Lowell Sun All-Suburban team of the season. This is the first time any one school has placed all its players on the first team. The championship team consisted of Capt. "Allie" Angus and "Bud" Doole as forwards, Henry Zabierek as center, "Mickey" Cochrane and "Don" Grant as guards.

Capt. "Allie" Angus turns his captaincy over to co-captains "Mickey" Cochrane and "Bud" Doole.

Coach John MacLaughlan deserves much credit for producing a team which advanced so far in the sports world.

|            |                  |     |            |     |                    |                          |    |    |
|------------|------------------|-----|------------|-----|--------------------|--------------------------|----|----|
|            |                  | CHS |            | CHS |                    | CHS                      |    |    |
| Alumni     | 23               | 46  | Tewksbury  | 12  | 34                 | Tewksbury                | 11 | 26 |
| Wilmington | 10               | 48  | Wilmington | 0   | 40                 |                          |    |    |
| Burlington | 18               | 27  | Burlington | 24  | 43                 | <i>M.I.T. Tournament</i> |    |    |
| Howe       | 17               | 40  | Johnson    | 21  | 23                 | Winthrop                 | 19 | 24 |
| Dracut     | 14               | 23  | Howe       | 20  | 34                 | Framingham               | 40 | 30 |
| Johnson    | 15               | 48  | Dracut     | 31  | 36                 |                          |    |    |
|            | Total C.H.S.—522 |     |            |     | Total Opponent—275 |                          |    |    |



## Girls' Basketball

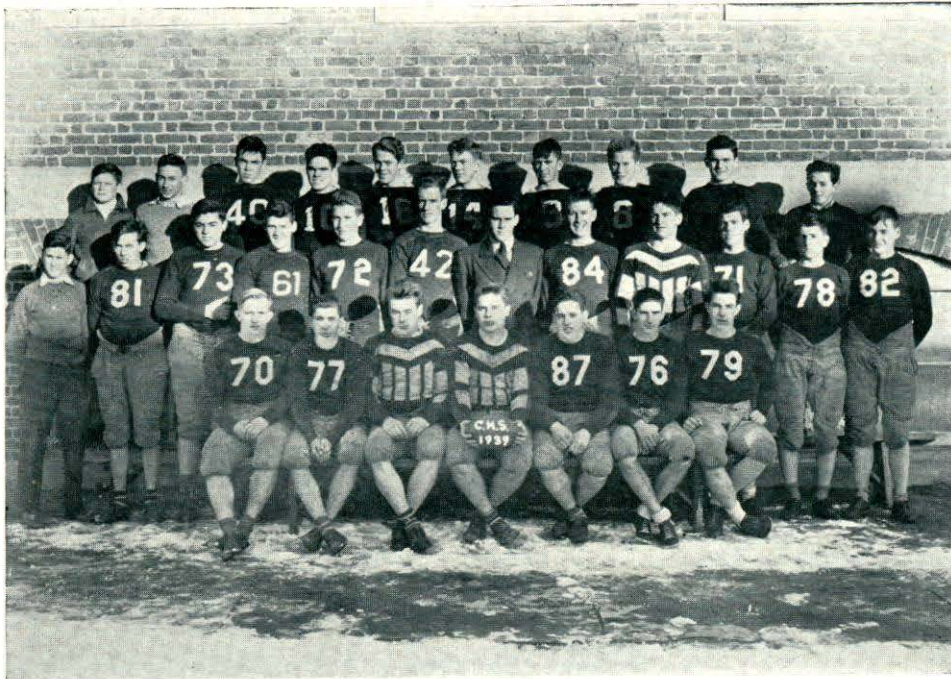
The girls' basketball team, working in the new gym under the laudable direction of Miss Ryan and Mrs. Poland, established a successful record. Out of the twelve games played four were lost, two apiece to Wilmington and Johnson, the top teams in the League. Our team took third place honors in the Lowell Suburban League.

Two of our girls, Captain "Patsy" McHugh and "Jo" McDonough, won positions on the League's All Star First Team. "Jo" also placed second as the League's high scoring forward, having tallied 186 points.

The members of the team played a clean brand of basketball and had plenty of fighting spirit. The guard court was ruled by Captain Patsy McHugh, Ethel Strobel and Jane Garrow, with Claire Hazeltine and Pauline Stevens turning in some able assisting. The forward court was dominated by "Jo" McDonough, Eileen Greenwood and Captain-elect Janet Symmes. Other girls, when called upon, substituted and played fine basketball.

The scores:

|         |            |    |            |    |         |            |    |            |    |
|---------|------------|----|------------|----|---------|------------|----|------------|----|
| Dec. 22 | Chelmsford | 15 | Alumnae    | 14 | Jan. 30 | Chelmsford | 26 | Wilmington | 30 |
| Jan. 3  | "          | 10 | Wilmington | 16 | Feb. 5  | "          | 14 | Tewksbury  | 14 |
| Jan. 12 | "          | 37 | Burlington | 9  | Feb. 7  | "          | 39 | Burlington | 19 |
| Jan. 16 | "          | 29 | Howe       | 27 | Feb. 14 | "          | 31 | Johnson    | 41 |
| Jan. 18 | "          | 20 | Dracut     | 11 | Feb. 17 | "          | 18 | Howe       | 14 |
| Jan. 23 | "          | 18 | Johnson    | 21 | Feb. 27 | "          | 11 | Dracut     | 10 |
| Jan. 26 | "          | 23 | Tewksbury  | 10 |         |            |    |            |    |



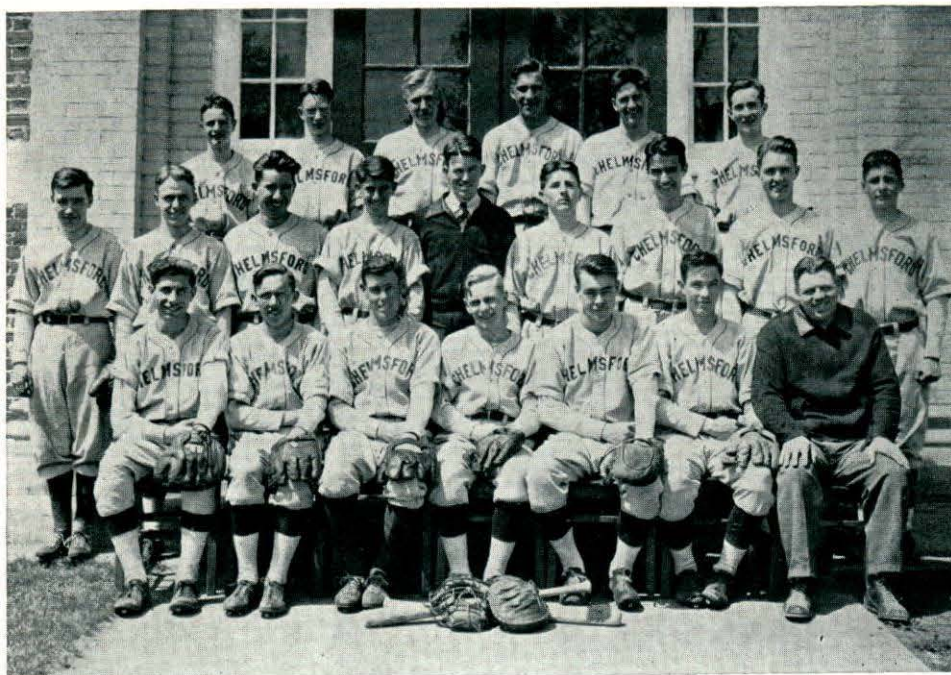
## Football

The 1939 eleven of Chelmsford High had a very successful season. Our new and able Coach, George Boyce, developed a very fast outfit. The pig-skin warriors of 1939 won four games, lost two, and tied one.

After dropping a 7 to 6 decision to a husky Tewksbury eleven in the opener, our boys whipped a superior experienced eleven from Lexington (our coach's home town) by a 14 to 0 margin. The blue and maroon next went to North Andover where they suffered a drastic defeat by Johnson High 32 to 0. The following week they came right back, conquering Story High 20 to 6. The fans who saw our Booster Day Game with Dracut will remember the thrills of that game for many a day to come. For three periods Chelmsford and Dracut battled back and forth on the gridiron with neither club being able to cross the opponent's goal line. Finally, with thirty seconds to go and the ball on the 15 yard line, "Herb" Beaubien booted a field goal and the blue and maroon walked off the field victorious by the score of 3 to 0. The Chelmsford lads next played Ayer and battled to a 6 to 6 draw. The Thanksgiving Day Game was played with Howe. The blue and maroon were at their best, going home to their turkey dinner victorious by the score of 22 to 7.

The team was led by Captain Ellsworth Winnette who played right guard. Throughout the season, the punting and running of Donald Grant was outstanding; while Paul Beauregard and "Allie" Angus took care of the end posts. "Mickey" Cochrane was a very capable passer and reeled off many a long run. "Pete" McHugh and "Bill" Hennessey did the blocking. "Don" Gray and "Herb" Beaubien were at the tackle positions; "Ben" Golubisky was at left guard and "Bill" Fremeau was at center.

Next season's squad will be hard pressed for veterans since graduation this June takes nine of the regular eleven. "Pete" McHugh will captain the 1940 team.



## Baseball

The 1940 Chelmsford High School baseball team is without doubt the best outfit representing our school on the diamond in the past decade. It may even be the best in the history of the school. When has a baseball team gone through 14 games without going down in defeat? True, we have compiled some great records in the past, but none can equal that of the 1940 team.

Never, until this year, has a baseball team been invited to take part in a play-off for state honors. Although defeated by Belmont who later became the Eastern Massachusetts Champions, we had the honor of being considered by tournament authorities as a possible contender for the state title.

Who are the boys responsible? Who commanded such respect from their opponents? The answers are as clear as the picture above. Jimmy Doole and Mickey Cochrane, our star hurlers, divided in pitching honors.

Paul Beauregard, a wonderful catcher and batter, did a truly great bit of work in handling the pitchers.

Capt. Don Grant, that heavy-hitting first baseman, is the finest type of leader.

Then there is Bobby Angus at second, Artie Greenwood at third and Wilfred Freneau at short. They filled their positions as only victors can.

Bob DeKalb, a dependable hitter and fielder, was in left field. Flint Manahan and Garvin Jones were the regulars in center and right respectively. The whole outfield was death on fly-balls.

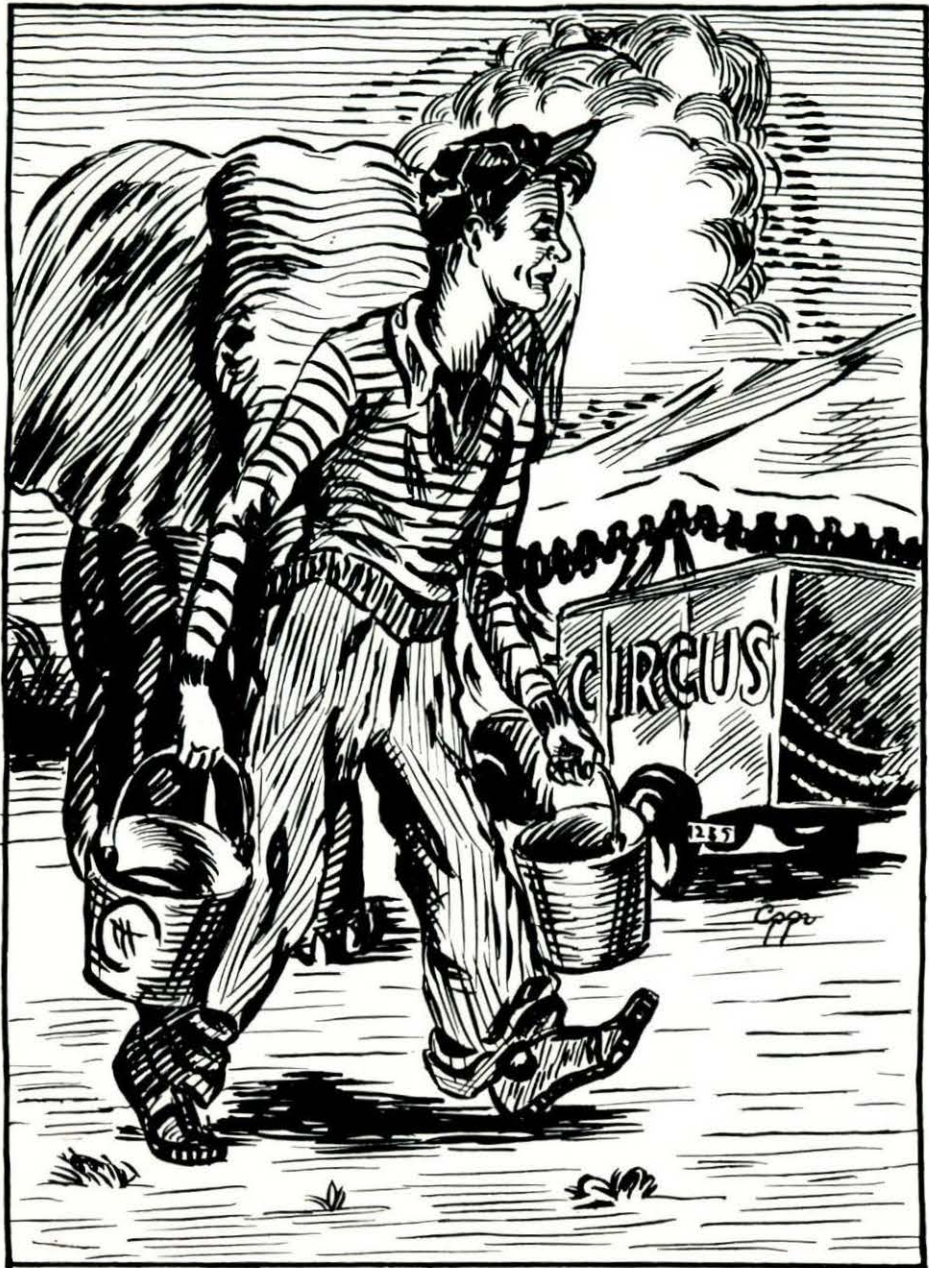
Chelmsford could not have had such a successful team without reserve strength. All squad members not mentioned in above paragraphs did their work well.

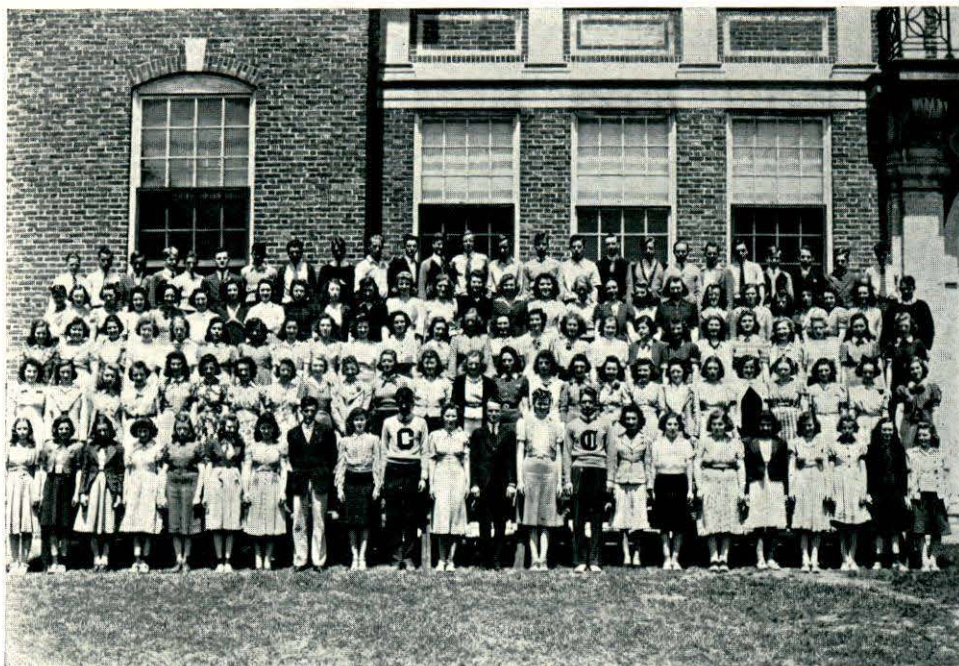
*(Continued on page 82)*

## Activities

*It seems that nature has concealed at the bottom of our minds, talents and abilities of which we are not aware. The passions alone have the privilege of bringing them to light, and of giving us sometimes views more certain and more perfect than art could possibly produce.*

*—La Rochefoucauld*





## Dramatic Club

*President*—Betty Armitage  
*Vice-President*—Robert DeKalb  
*Secretary*—Virginia Nath  
*Treasurer*—Natalie Johnson  
*Faculty Adviser*—E. Paul Gauthier

*Executive Board*—  
 Donald Marinel  
 James E. Doole, Jr.  
 Phyllis Paignon  
 Carol-Jeanne Hammond

That interest in dramatics at Chelmsford High School is still keen is an undeniable fact, for this year's membership in the club includes over one quarter of the school's enrollment. A series of bi-weekly meetings was enjoyed from the opening of the year until Christmas. Due to a revision of the extra-curricula and music programs, as well as to the institution of the gym classes, conflicts have made meetings since then less frequent. The nature of the entertainment at meetings has varied. On some occasions, members presented short skits and dramatic monologues. At other times movies were presented. The Dramatic Club orchestra, playing popular hits of the day, was enjoyed at all the meetings.

As in the past, the club this year organized two assembly programs. On February 14 several members of the group, assisted by two guest soloists, presented an informal music and dancing program which was enthusiastically received. Mr. Gauthier, as Professor Quiz, conducted a quiz program at the April 10 assembly. The participants represented each home room in the school. The award, made by the class, went to the sophomores.

The major undertaking of the club this year was its evening play, "Sunshine." An account of this presentation appears in a separate article in this book.

The members of this club appreciate deeply the ability of their leader, Mr. Gauthier. His keenness of mind, his able directing, and his willing spirit has won the admiration of all his pupils.



## Dramatic Club Play

### "SUNSHINE"

The evening of December 7 was a gala occasion at Chelmsford High School, for on that night the new auditorium was first opened to the public for the Dramatic Club presentation, "Sunshine." The leading characters in this uproarious farce were Bud Doole and Claire Hazeltine. Bud, who in real life is the pride of Chelmsford High's pitching staff, gave a superbly realistic portrayal of Buddy Bradford, exuberant hurler who had come to Sunshine Sanitarium for a throat operation. The plot of the play concerned his efforts to win the love of Mary, the beautiful and sympathetic nurse most ably played by Claire. A mystery sub-plot further complicated matters: a ruthless speculator, played by Walter Rosendale, almost succeeded in trapping Sylvia Deane (Shirley Lawson), a convalescent and Jim, her fiance (Carl Pattison) into a false investment.

Many extremely comic scenes resulted from the idiosyncrasies of various patients at the sanitarium. Robert DeKalb, enacting the part of Mr. Butternip, a hypochondriac who found his medicine most pleasant and who proved a constant care to his nurse (Mary Burns), almost stole the spotlight from the leading characters. Mrs. Whipple (Louise Freneau), a nervous country lady, and Tessie Mitford (Esther Braman), a mental patient frequently came into hilarious conflict. Finally, the play would not have been quite as entertaining without the haughty Mrs. McCann (Patricia Monahan) and her exasperatingly mischievous daughter of ten, Maudelia (Patricia Valentine).





## "Early to Bed---Early to Rise"

On the evenings of May 9th and 10th the Senior Class of 1940 presented its annual play. The comedy, "Early to Bed—Early to Rise" by William Davidson was one of the most outstanding plays ever presented by a graduating class.

The story is of the Fuller family who live on Chicago's South side. The characters were ably portrayed by members of the Senior Class.

Patricia McHugh, in the role of Patsy Fuller, about 12, drew many laughs with her pet skunk, "Violet". Pearl Brooks was "great" as Spanky Minuti, a breezy young "Modern". She got her man, too. Freeman Manahan as Everitt Fuller was the father of the family and played up his "absent-minded Professor" character very well. Patricia Small as the middle aged spinster, Abbie Fuller, gave an excellent idea of the trials and tribulations of life. Bobby Fuller, a lazy, typical American lad, portrayed by Hamilton Lennox was interested only in Spanky and automobiles. Doris Lapham and Fred Taylor, as Marion Fuller and Jim Griggs, were the perfect lovers. Geraldine Cahill should be commended for her delightful southern accent in the character of Laura Montgomery. Ernest Richardson as Otto Kirschmier was a "hit" as the little old German who kept the pet store. Donald Marinel made an excellent frustrated landlord who wished he had a steel heart. The part of the dashing young reporter was taken by Irene Pelletier.

This three-act comedy was well directed and coached by Miss Daisy B. MacBrayne, senior class adviser, assisted by Miss Marilyn Bettencourt.



## The Latin Club

*Consuls*

MARILYN BETTENCOURT

IRENE BOUCHER

STELLA WRIGHT

*Quaestor*

LOIS ABBOTT, GENA MAKEY

*Aediles*

GRACE DECARTERET, AGNES MCGEOWN

*Adviser*

MISS F. CHRISTINE BROWN

The highlight of the year for the Romani Hodierni was the celebration of the 2,693rd birthday of the city of Rome. The shades of certain famous Romans agreed to assist in the commemorative program and re-enacted the great events of Roman history in which they took part. We heard the cries of the babies, Romulus and Remus, the splash of Horatius as he jumped into the Tiber, the trumpeting of the elephants of Hannibal, Caesar's "Et tu, Brute," and many other reminders of thrilling deeds of the past. We would not want it breathed aloud but we think that Marian King, Alice Ducharme and Patricia Fallon gave those shades just a little assistance. Anyway, we all enjoyed the program and we hope that those same shades will favor us again with their presence.

*Seniors*

Bettencourt, Marilyn  
Boucher, Irene

Adams, Edna  
Barron, Rita  
Christopoulos, Alice  
Coleman, Patricia  
Coppen, Eleanor  
DeCarteret, Grace  
Ducharme, Alice  
Fallon, Patricia  
Fitzpatrick, Norma  
Gervais, Irene

King, Marion  
Laferriere, Claire  
LeMay, Claire  
Makey, Gena  
McGeown, Agnes  
Nickerson, Shirley  
Reedy, Helen  
Smith, Evelyn  
Stanewicz, Lena

*Juniors*

Wright, Stella

*Sophomores*

Abbott, Lois



## Debating Club

Donald Marinel—*President*  
 Robert Ludwig—*Vice President*  
 Ruth Armitage—*Secretary*  
 Gerald Lantagne—*Treasurer*

Jennie Alukonis  
 Shirley Boyd  
 Louise Fremeau  
 Eileen Greenwood

Natalie Johnson  
 Mildred Kinch  
 Marjorie Riley  
 Raymond Saunders

*Faculty Adviser*—Beatrice T. Hoar

At the beginning of the season, the Debating Club of the Chelmsford High School resolved to help the student solve his many problems. A series of debates under the patient and efficient guidance of Miss Hoar was carried on as a part of the assembly program. In the first attempt, the members of the affirmative side proved that "Student Government Should Exist In the Chelmsford High School." On a second occasion the affirmative members successfully argued that "A Free Elective System Should Be Adopted In the Chelmsford High School." For a third and last assembly debate, the negative side declared that "The Honor System Should Not Be Adopted In Our School."

One outside debate was presented for the Parent-Teacher Association of the Westlands. At that time it was decided that "Lincoln Should Be As Honored As Washington."



## Orchestra

### *Pianists*

CAROL JEANNE HAMMOND  
VIRGINIA MORTHAM

### *Violinists*

NELAND KLONEL  
CORA LAKIN  
DWIGHT TRUBEY

### *Clarinetists*

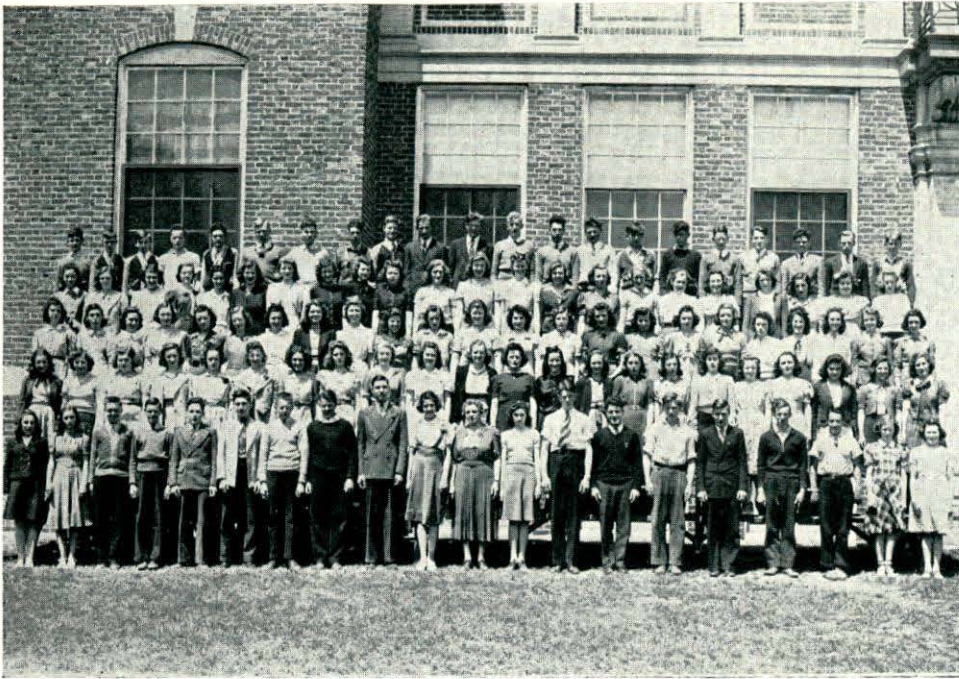
RUTH MORRIS  
ARLENE SMITH

### *Trumpeters*

EDWARD BERG  
EDWARD FOX  
FLORENCE MOSS  
EVELYN SMITH  
CHESTER WOODWARD

*Director*—M. MARION ADAMS

The High School Orchestra, under the capable direction of Miss M. Marion Adams, has added much to the pleasure of our assemblies this year by furnishing a musical background for our entrance and exit. Besides this, the orchestra entertained between the acts of the Dramatic Club and Senior plays, furnished the music for the operetta, and participated in the official opening of the new part of our building. Dwight V. Trubey, violinist, represented the orchestra this year at the New England Music Festival held in Provincetown, April 17-20. The orchestra this year has had an active part in the success of our school functions.



## High School Chorus

This has been a busy year for the High School Chorus. In February, the operetta "Little Almond Eyes" was presented. The chorus and orchestra gave a concert for the Assembly, May first.

Howard Nickerson, a member of the chorus, attended the New England High School Festival at Provincetown, Massachusetts, April 17 to the 20.

A small group from the chorus organized a High School Choir. The choir sang at Assemblies, for the Parent Teachers Council, and the Town Memorial Day Exercises.

May eleventh, forty-four of the chorus participated in the Massachusetts Music Festival at Wellesley. At the audition the group sang "O Singing Land" by Sibelius as the required number and "The Viking Song" by Coleridge-Taylor for the selected song. We are happy to say that the rating was excellent. This is the first year that the High School has been represented at this festival but we hope to make it an annual affair.



## CHORUS

|                       |                     |
|-----------------------|---------------------|
| Anderson, William     | Laton, Dexter       |
| Ayotte, Elsie         | Lawson, Shirley     |
| Braman, Esther        | Lemay, Claire       |
| Belida, Helen         | Libbee, Charles     |
| Bentas, Arthur        | Lennox, Hamilton    |
| Bentas, Costos        | Leslie, Thomas      |
| Berg, Natalie         | McLellan, Ruth      |
| Bicknell, Gertrude    | Messier, Theresa    |
| Bowen, Doris          | Miller, Lois        |
| Boyd, Shirley         | Mullen, Louise      |
| Belanger, Evelyn      | Moore, Kathleen     |
| Ballinger, Edwin      | Mortham, Virginia   |
| Barber, Eugene        | Miller, Charles     |
| Borden, Josephine     | Mason, David        |
| Burns, Mary           | Monahan, Patricia   |
| Bridgford, Barbara    | Norton, Herbert     |
| Brooks, Pearl         | Nickerson, Howard   |
| Byron, Grace          | Noon, Barbara       |
| Champagne, Gloria     | Nickerson, Shirley  |
| Cleghorn, Barbara     | Paignon, Phyllis    |
| Carkin, Jacqueline    | Potter, Phyllis     |
| Carter, Gloria        | Pearson, Emile      |
| Carll, Edmund         | Petterson, Birger   |
| Cahill, Joan          | Pierce, Donald      |
| Christopoulos, Alice  | Russell, Muriel     |
| Campbell, Robert      | Reedy, Helen        |
| Clayton, Harold       | Russell, Phyllis    |
| Coburn, Stanley       | Russon, Mona        |
| Coppen, Eleanor       | Rediker, Laurence   |
| Cott, Allan           | Reis, Robert        |
| Donovan, Virginia     | Simms, Barbara      |
| DiRuzza, Beatrice     | Shuhany, Elizabeth  |
| Dutton, Nelson        | Simard, Roland      |
| Dutton, Lewis         | Small, Patricia     |
| Emerson, Martha       | Smith, Phyllis      |
| Ford, Harriette       | Smith, Doris        |
| Foster, Marion        | Smith, Evelyn       |
| Fletcher, Shirley     | Sargent, Dorothy    |
| Finnegan, Blair       | Serbert, Jane       |
| Gervais, Irene        | Speed, Harold       |
| Gill, Louise          | Stanton, Irma       |
| Gouvaia, Louise       | Straughan, Robert   |
| Haire, Charlotte      | Swallow, Sallie     |
| Hammond, Carol-Jeanne | Spaulding, William  |
| Hanchette, Ruth       | Taintor, Albert     |
| Hansen, Dorothy       | Trull, Marshall     |
| Hansen, Lillian       | Thurber, Teresa     |
| Harvie, Dorothy       | Valentine, Patricia |
| House, Walter         | Welch, Virginia     |
| Jones, Doris          | Wheeler, Mildred    |
| Jacobs, Catherine     | Wiggin, Norma       |
| Karafelis, Mabel      | Wilson, George      |
| King, Marion          | Winters, Stanley    |
| Koford, Jarvice       | Williams, Edward    |
| Lapham, Doris         | Woodward, Chester   |
| Lapham, Roger         | Wright, Lois        |
| Lakin, Cora           |                     |

*Accompanists:*  
 Marion King  
 Cora Lakin



# The Operetta

## "LITTLE ALMOND EYES"

A beautiful Chinese garden; lovely Chinese ladies; handsome Chinese men; gay songs and dances are reminders of the successful operetta "Little Almond-Eyes" given by sixty members of the High School Chorus in the new auditorium on February 2, 1940. Miss M. Marion Adams was the music coach and general manager and Mr. Emile P. Gauthier, the dramatic coach. Cora Lakin and Evelyn Smith were the accompanists.

### CAST OF CHARACTERS

|   |                     |
|---|---------------------|
| Wang-Ho   | Robert Reis         |
| <i>Captain of the Guard and Lover of Little Almond-Eyes of Cathay</i> |                     |
| The Emperor Ming  | Stanley Winters     |
| Ping-Po   | Howard Nickerson    |
| <i>Master of Ceremonies of the Court of Cathay</i>                    |                     |
| Fee-Fo-Fum  | Walter House        |
| <i>Lieutenant of the Guard</i>  |                     |
| Chief Bonze   | Eugene Barber       |
| Little Almond-Eyes  | Norma Wigginn       |
| <i>One of the Emperor's Prospective Brides</i>                        |                     |
| <i>Other of the Emperor's Prospective Brides</i>                      |                     |
| Miss Lotus-Leaf   | Harriette Ford      |
| Dooma   | Harriette Ford      |
| Miss Tip-Toe  | Phyllis Paignon     |
| Miss Lady-Slipper   | Marion King         |
| Miss Deer-Foot  | Joan Cahill         |
| Miss Jasmine-Bud  | Alice Christopolous |



CHORUS—OPERETTA

*Girls*

Elsie Ayotte  
Helen Belida  
Gertrude Bicknell  
Doris Bowen  
Shirley Boyd  
Esther Braman  
Grace Byron  
Jacqueline Carkin  
Gloria Carter  
Gloria Champagne  
Barbara Cleghorn  
Irene Gervais  
Louise Gill  
Charlotte Haire  
Mabel Karafelis  
Doris Lapham  
Shirley Lawson

Claire Lemay  
Ruth McClellan  
Theresa Messier  
Lois Miller  
Virginia Mortham  
Shirley Nickerson  
Barbara Noon  
Phyllis Potter  
Phyllis Russel  
Mona Russon  
Dorothy Sargent  
Janice Seibert  
Patricia Small  
Irma Stanton  
Sally Swallow  
Patricia Valentine  
Virginia Welch

*Boys*

Edwin Ballinger  
Lewis Dutton  
Nelson Dutton  
Roger Lapham  
Hamilton Lennox  
Charles Libbee  
Herbert Norton  
Emile Pearson

Donald Peirce  
Lawrence Rediker  
Roland Simard  
William Spaulding  
Harold Speed  
Albert Taintor  
Marshall Trull  
Edward Williams

George Wilson

## Homework

Piles of books and papers  
Surround me every night;  
As I puzzle o'er my lessons,  
And strive to get them right.

I start in with my shorthand,  
Three copies of each letter;  
If this pen were not so scratchy,  
I might possibly do better.

Thank goodness I am nearly done,  
It looks neater than I thought;  
I have just one more line to do,  
Oh, horrors, there's a blot.

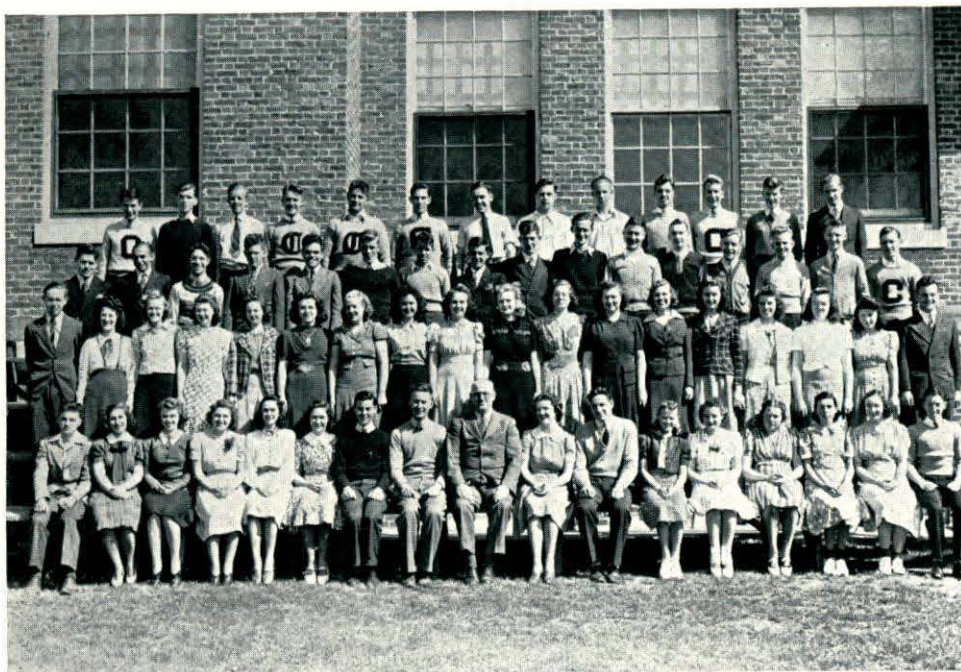
Then when I finally finish that,  
Accounting I must do;  
This working sheet won't balance,  
The ledger's all wrong, too.

Now three chapters of English,  
From a thick book that's so dry;  
I can't make head or tail of it,  
No matter how hard I try.

At last my homework is all done,  
And I can have a rest,  
I guess I'll listen to Al Peirce,  
Gosh! I forgot about the test!

—DORIS MULLEN '41





## Chemistry Club

*President*  
*Vice-president*  
*Secretary*  
*Treasurer*

ROBERT LUDWIG  
GERALD LANGTAGNE  
PATRICIA MCHUGH  
DONALD GRAY

*Faculty Director*—PROCTER P. WILSON

The Chemistry Club was organized several years ago by the pupils enrolled in the Chemistry Class. Under its charter, members are permitted the full use of the laboratory after school hours to perform experiments of a chemical nature. The following is a list of members:

|                      |                    |                     |                     |
|----------------------|--------------------|---------------------|---------------------|
| Babcock, Eric        | Halentic, Emile    | Mortham, Virginia   | Sherman, Warren     |
| Baron, Rose          | Hall, Milton       | Murphy, John        | Smith, Arlene       |
| Bettencourt, Marilyn | Hennessey, William | Nath, Virginia      | Straughan, Jeanette |
| Bickford, Stuart     | Hood, George       | Nickerson, Howard   | Sullivan, William   |
| Bicknell, Gertrude   | Jones, Irene       | Pederson, Ralph     | Symmes, Alan        |
| Bowen, Doris         | Karafelis, Mabel   | Petterson, Glendyse | Taylor, Frederick   |
| Buchanan, Kenneth    | Kinch, Mildred     | Pettazoni, Paul     | Trubey, Alton       |
| Cochrane, Gordon     | Kinnal, Julian     | Pickles, Marion     | Trubey, John        |
| Coluchi, Mary        | Kinnal, Olga       | Pond, Dorothy       | Trubey, Marshall    |
| Coppen, William      | Knox, Corinne      | Pope, George        | Vondal, Luenna      |
| DeKalb, Robert       | Lawson, Shirley    | Reno, Mae           | Wallace, Glenn      |
| Doole, James         | Leman, Albert      | Richardson, Ernest  | Williams, Edward    |
| Dunnigan, John       | Marinel, Donald    | Riopelle, Arthur    | Winnette, Ellsworth |
| Eddy, Rita           | McLellan, Ruth     | Russell, Chester    | Wright, Stella      |
| Foster, Marion       | Messier, Theresa   | Saunders, R. Pearl  | Zaberiek, Leona     |
| Graham, Mary         | Moss, Florence     | Secord, Barbara     |                     |



## Slide Rule Club

*President*  
*Vice-president*  
*Secretary*  
*Treasurer*

MARILYN BETTENCOURT  
ELLSWORTH WINNETTE  
ROBERT DEKALB  
CHESTER RUSSELL

*Faculty Director*—PROCTER P. WILSON

The Slide Rule Club is the outgrowth of a group which met after school for the purpose of practice with the slide rule.

The club is composed of Juniors and Seniors who own a slide rule. The following is a list of members:

Babcock, Eric  
Berg, Edward  
Cochrane, Gordon  
Coluchi, Mary  
Coppen, William  
Doole, James  
Dunnigan, John  
Foster, Marion  
Graham, Mary  
Gray, Donald  
Hennessy, William  
Karafelis, Mabel  
Kinch, Mildred  
Kinnel, Julian  
Kinnel, Olga

Knox, Corinne  
Lantagne, Gerald  
Lawson, Shirley  
Leman, Albert  
Ludwig, Robert  
Marinel, Donald  
McHugh, Patricia  
McLellan, Ruth  
Mortham, Virginia  
Murphy, John  
Nath, Virginia  
Nickerson, Howard  
Petterson, Glendyse  
Pickles, Marion  
Pond, Dorothy

Pope, George  
Saunders, Pearl  
Sherman, Warren  
Smith, Arlene  
Sullivan, William  
Symmes, Alan  
Trubey, Alan  
Trubey, Dwight  
Trubey, John  
Trubey, Marshall  
Vondal, Luenna  
Wallace, Glen  
Williams, Edward  
Wright, Stella  
Zabierek, Leona

## The Rise and Shine Club

Miss MacBrayne's English "B" class, period IV, formed a club as a project in English this year mainly, for two reasons: first, to learn how to conduct club meetings according to parliamentary laws; secondly, to try to cultivate the art of speaking good English at all times.

At the formation of the club, Edward Fox presented the members a gavel which was designed by him.

The Rise and Shine Club's name indicates the members' desire to take an active part in all club meetings, as a means of helping the individual to express himself and herself in a clear, concise, and a convincing manner.

They met during Period IV, Wednesdays, conducting the meetings in a dignified and interesting way.

The officers, consisting of president, secretary, and policeman, were chosen to serve for a term of one month, so that a large number of pupils would have the opportunity for such training.

The By-Laws Committee, ably handled by its chairman, Wesley Harper, explained each law which was separately debated "pro" and "con" by the club members before finally being adopted.

The roll call and the minutes of the last meeting were considered important factors in the club and an accurate account was kept of each.

Each time the club assembled, after all the new and old business was attended to, the meeting was turned over to the Chairman of the Program Committee, William Desmond, who arranged many interesting programs. Some of these were as follows: "The Benefits of Stamp Collecting As A Hobby", by Patricia Coleman; "Photography As My Hobby", by Robert Hill; Alice Christopoulos gave a comparison of the two hobbies as to cost, pleasure, and work. Gena Makey gave an interesting book review on "My Son, My Son", by Howard Spring. Rita Baron reviewed, "The Light That Failed", by Rudyard Kipling, and Jennie Alukonis told the story of "A Glorious Adventure" by Richard Haliburton.

After Robert Hill returned from Florida, he gave an interesting and unique report on "Scenes in Florida". This report proved to be a very instructive half hour, as he gave much splendid information such as, the building of the artificial islands, the grafting of seven different kinds of citrus fruits on one tree, and utilizing the inner fibre of moss that hangs from the trees in the cushions of Ford cars. The following week Robert Hill was asked to show his pictures which he had taken. The class therefore gathered on the stage of the new auditorium where the pictures were shown and explained by him.

The next week Miss MacBrayne consented, with much kindness, to read to the class one of her original stories. She selected the "Funny Wedding" which was full of originality and humor. This was thoroughly enjoyed by the members of the club.

An enjoyable program was given at the next meeting in the form of a question box contest. William Desmond asked the questions and Edward Fox kept the score. Wesley Harper, David Sutherland, and Henry Zabierek were lined up against Phyllis Paignon, Helen Reedy, and Patricia Coleman. It was an exciting contest, but finally the boys won with Wesley Harper and Henry Zabierek tied for top honors.

Another worthwhile program was an old-fashioned spelling match, whereby Edward Fox, Robert Hill, and Wesley Harper spelled down Lois Abbott, Irene Gervais, and Marjorie Riley, the score being 300-200.

*(Continued on page 82)*



# New Frontiers for American Youth

American youth today is faced with more intricate and perplexing problems than any other generation has faced. Civilization itself stands at the crossroads. We find ourselves in a world suffering from growing pains. Serious and idealistic youth accepts the challenge and is trying to think a way out. Others, to escape a sense of futility and strain, turn to swing and become jitterbugs. Middle age, beset by its own problem of rearing children, usually has its own way of becoming settled and complacent about the "status quo"; even if they are dissatisfied they feel it is a fixed order that they can do nothing to change. Today even middle age is very disturbed and uncertain, the most sensitive very distressed. Certainly it is a time demanding revolutionary changes, and above all men of courage and ideals, of intelligence, faith, and vision.

College youth has shown by referendum that it does not want war. A war with our fellow youth of other nations would settle nothing nor "make the world safe for democracy". Only munition makers, shipbuilders, and other manufacturers have fortunes to make; youth has everything to lose. All the heroism, endurance, ingenuity, and imagination we possess which a war would require, are needed in a mighty struggle with poverty, injustice, crime, slums, race and class prejudices, and economic and social inequalities. America came into a heritage of great wealth in natural resources. We must struggle against those forces which destroy them, viz: erosion, forest fires, and floods. We must reduce the bad effects of these to a minimum, as well as reduce the high accident rate due to carelessness.

America, because it is a democracy, offers many opportunities to its youth. In a democracy youth is not regimented and standardized as in an autocratic state. Again, some countries like India have a caste system which fixes the social position of its citizens irrevocably. Our is a country of free enterprise where youth has a chance to show what it can do by initiative, industry, and ability, to reach the summit. This gives equal opportunity to all, limited only by self limitations. Like the pioneers, he understands he is to rely upon himself and not on the authority of the past. American youth has been brought up in an atmosphere of freedom. Only a democracy could engender the romantic stories of youth and manhood which the pioneering days of America produced.

We, the youth of this and succeeding generations, must make "government of the people, by the people, and for the people" function so perfectly and efficiently that it shall not only endure and not perish from the earth, but spread over the earth, as the autocracies burn themselves out. This spirit of democracy must and shall prevail, and some day permeate the world because it is innate in human nature based upon a respect for personality and the rights of the individual. The progress of civilization has been the progress of the democratic spirit.

The early tribe had all things in common. There was not a needy person among them. The love of a common enemy made a tribe of brothers. And this family-like unity included economic and social unity. The economic cooperation was entirely voluntary. The individual remained free. Fascism has no real economic cooperation, while communism is built

upon such economic cooperation, forced upon everyone. If anyone disagrees with the mass or with Stalin, he is exiled or court-martialed. In Russia the end of an economically reorganized state seemed such a worthwhile end that it was worth force bringing it about. "But those who use the sword shall perish by the sword." Now it must continue to be sustained by force in repeated and continuous purges. The individual has lost all freedom as completely as has the fascist.

Modern socialism has adopted this Christian economic principle: "To each according to his need and from each according to his ability." But socialism has no exclusive right to it. We must rediscover and apply the cooperation principle in production, distribution, and consumption. We must remove the competition of greed and replace it with cooperation born of goodwill.

"Impracticable," you say. But the family is based upon this principle. Each one in the family gets his share according to his need of whatever there is and contributes as he is able. If the majority once believed that God is the father of all, and the world his family, cooperation will follow naturally instead of competition. The Lord did not tell us how, but dealt with principles, great sweeping reforms that grip and challenge and demand action after nearly two thousand years.

In communism and fascism minorities are forced to cooperate or be persecuted. But in democracies descent involves no punishment or discrimination. The Church is a real democracy in the social and economic sense as well as the political. Democracy has not yet failed the world; it has only been partially applied or tried. To bring about this thorough democracy, we must think and plan work.

Each according to his ability must do all he can to bring in this new order, whether as economists, statesmen, lawmakers, sociologists, farmers or industrial leaders.

First, democracy must permeate society in our own country. The product of industry and labor must be more equally divided, so that the American standard of living may be maintained by all. Children must be well nourished in America, "the land of plenty." Food cannot be wasted, even by the government, when so many in this and other countries are undernourished. All children must receive a general education, and the opportunities to develop special abilities, if they are to grow up enthusiastic supporters of democracy because it gave them a chance. The poor living conditions of the share croppers in the South, their insecurity, and child labor must be remedied.

We have handicapped the negro by poverty, ignorance, and segregation and then lynched him for what we have allowed him to become. These injustices are a blot on our civilization. Not through government help, but through the normal channel of industry a middle class should arise capable of a decent living instead of the very rich and the very poor classes we have today. The capitalistic system has been built on competition and profit. Labor unions too, have been only selfish in their claims. Intelligent American youth must build a new social and economic order under the leadership of wise, sympathetic, American men and women. One here and one there cannot have the strength of youth united for a great constructive program for social and economic righteousness. The youth in Germany and Italy are the best supporters of Hitler's and Mussolini's regimes.

If we can set our own house in order, the same principle must be applied to world affairs. While Hitler is telling us "they must find a place under the sun" with economic security for all, America should show nations



that no one is safe from the ravages of war as long as the people of any country are denied the rights and means of a decent living. Ten dollars a week is the average wage in Germany. The nations must divide territory until a decent standard of living can be maintained by all. We must either face this problem or that of other wars, which may exterminate civilization.

America has been the melting pot of the world. We have all races and nations alike. We should learn to cooperate and respect each other. But each generation should do better than the last. While the past generation was still warped and perverted by prejudices, we, the youth of America, the generation soon to come into service and power, must bring into practice a real democracy with equal opportunities for every person of every race. While German and Italian youth is being taught and shown the example of racial supremacy and the suppression of all minorities, American youth should be steering toward and approximating in practice the democratic ideals of Washington and Lincoln where every man was free and there was equality among all. These problems are the new frontier for American youth and must and shall be conquered.

LLOYD VAN LUNEN '42

## God Bless My Lovely Mother

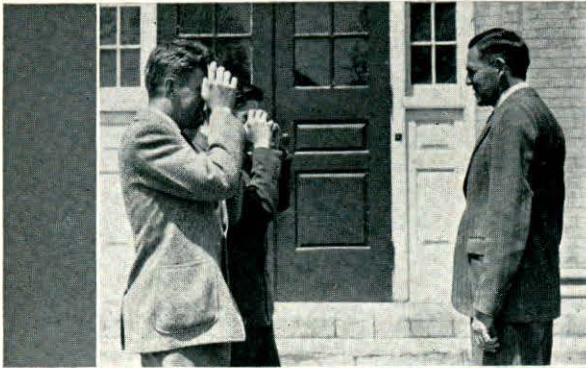
God bless my lovely mother,  
Keep her always close to me,  
Help me when I miss her most,  
Because she's now with Thee.

When she died this afternoon  
She said, "Darling, don't you cry,  
For though I now must leave you  
I'll be with you by and by.

For I'll be watching o'er you  
And I'll never leave your side.  
Even though you cannot see me  
I'll be your constant guide."

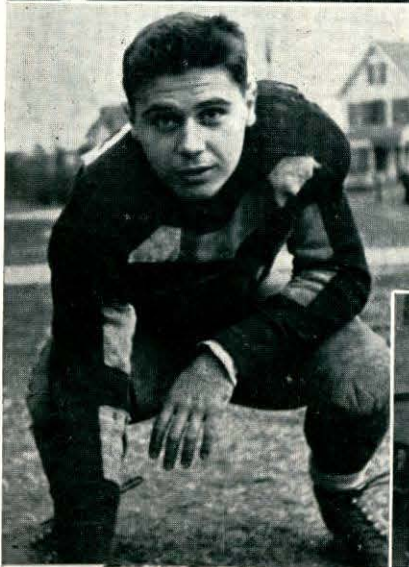
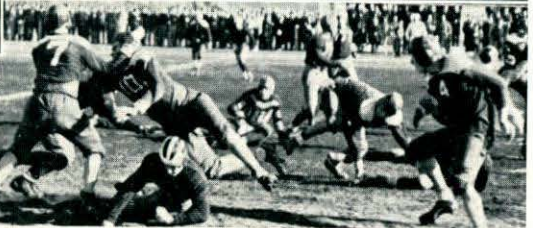
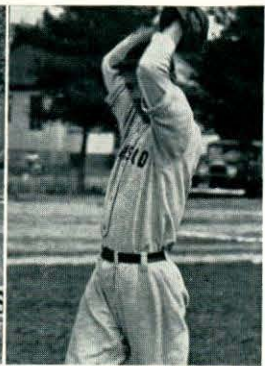
So bless my lovely mother  
Who has gone to live with You  
And some day let me see her  
When my life's work is through.

—HELEN REEDY '42











1. Ruth Thompson
2. Glendyse Petterson
3. Harold Speed
4. Ellsworth Winnette
5. Gladys Bridgeford
6. Irma Stanton
7. Josephine McDonough
8. Pearl Brooks
9. Dorothy Hansen
10. Dwight Trubey
11. Wallace Sanders
12. Irene Pelletier
13. Vernon Burton
14. Virginia Donovan
15. Patricia McHugh
16. Frances Fox
17. Gertrude Miller
18. Frederick Taylor
19. Althea Garrow
20. Harriette Ford
21. Edith Johnson
22. Pauline Noel
23. Howard Nickerson
24. James Golden



## Humor

*The mind ought sometimes to be amused,  
that it may the better return to thought, and  
to itself.*

*—Phaedrus*



# Best Bets of C. H. S.

## 1st Race                  Senior Top Honors

1. Gladys Bridgeford ..... Nice going.
2. Marilyn Bettencourt ..... Dreams fulfilled.
3. Ellsworth Winnette ..... Going places.
4. Patricia McHugh ..... Efforts rewarded.
5. Vernon Fletcher ..... Last, but not least.

## 2nd Race                  The Love Handicap

1. Paul Beauregard—"Jo" McDonough  
Guaranteed winners; it seems.
2. "Pete" McHugh—"Debbie" Grant  
Will bear watching.
3. "Bobbie" DeKalb—Virginia Erikson  
Gallop into second stretch.
4. Garvin Jones—Jane Garrow  
Basketball specials.
5. "Don" Grant—Claire Hazeltine  
Mighty hard to guess this one.

## 3rd Race                  Sports Roundup

1. Mr. Watt ..... A.A. beats us all
2. Capt. Ellsworth Winnette ..... Going to the post.
3. Capt. "Allie" Angus ..... M.I.T. Specialty.
4. Capt. Patsy McHugh ..... Jumping up.
5. Capt. "Don" Grant ..... First base winner.

## 4th Race                  The Faculty

1. Mr. MacLaughlan ..... Entered but scratched.
2. Mr. Burns ..... Positive preference.
3. Mr. Boyce ..... Well-backed.
4. Miss Ryan ..... Rates good figure.
5. Mr. Knightly ..... A triple winner.

## 5th Race                  Subjects

1. English ..... A favorite with all.
2. History ..... Large handicap.
3. Shorthand ..... Burns up the track.
4. Chemistry ..... Heavy favorite.
5. Bookkeeping ..... Balanced and dependable.

Pat McHugh '40.



## Pictures No Artist Can Paint

- Picture—Forrest Miller with curly hair.  
" Julian Kinnal short and fair.  
" Gordon Cochrane without a grin.  
" Marion King not so thin.  
" Donald Pierce getting things straight.  
" Daniel Theriault coming in late.  
" Pauline Stephens without a smile.  
" Betty Armitage out of bounds for a while.  
" Elizabeth Shuhany making a noise.  
" Esther Braman without the boys.  
" Geraldine Cahill without a wave.  
" Glendyse Petterson looking grave.  
" Janet Symmes with no "pep" at all.  
" Virginia Fox very tall.  
" Eleanor Coppen not being an artist.  
" Mona Russon not studying her hardest.  
" Gloria Champagne not riding her bike.  
" Phyllis Russell not going on a hike.  
" Cora Lakin not practising drumming.  
" Jerry Dirrubo not doing his strumming.

These are pictures no artist can paint,  
Even my descriptions are very faint.

MURIEL RUSSELL '43



## Chemistry

C is for chemicals the world surely needs  
H is for halogens found in seaweed.  
E is for energy that can't be created or wasted  
M is for molecule, a million I've tasted.  
I is for iron, it's stronger than wood  
S is for sulphur, it doesn't smell good.  
T is for teacher, a pretty good dancer  
R is for radium, they say will cure cancer.  
Y is for yearning, plus a wee bit of sorrow  
When Mr. Wilson says, "A test for tomorrow!"

JEANETTE STRAUGHAN '41



## Senior Girls' Alphabet

|                   |  |
|-------------------|--|
| Attractive .....  | Glendyse Petterson, Ethel Strobel      |
| Bashful .....     | Dolores O'Neil                         |
| Cute .....        | Edith Johnson                          |
| Dimpled .....     | Roberta Howie                          |
| Efficient .....   | Patricia Small, Doris Lapham           |
| Fair .....        | Geraldine Cahill, Norma Wiggin         |
| Gentle .....      | Julia Yeschanin, Esther Quinby         |
| Humorous .....    | Mary Burns, Lois Miller                |
| Intelligent ..... | Gladys Bridgeford, Marilyn Bettencourt |
| Jolly .....       | Pearl Brooks, Frances Fox              |
| Kind .....        | Harriette Ford, Stasia Oczkowski       |
| Lovable .....     | Althea Garrow, Leona Zabierek          |
| Meek .....        | Virginia Donovan, Lovania Simpson      |
| Neat .....        | Barbara Cleghorn, Pearl Saunders       |
| Optimistic .....  | Margaret Carey, Ruth Thompson          |
| Pessimistic ..... | Hazel Cann, Pauline Noel               |
| Quiet .....       | Mary Santos, Irene Boucher             |
| Radiant .....     | Virginia Nath                          |
| Sylph-like .....  | Jean Krivetz, Josephine McDonough      |
| Tiny .....        | Joan Cahill                            |
| Up-to-date .....  | Dorothy Hansen, Edith Burndrett        |
| Vivacious .....   | Irene Pelletier                        |
| Winsome .....     | Elsie Bishop                           |
| X .....           | All of them                            |
| Yawning .....     | Barbara Hines                          |
| Zealous .....     | Irma Stanton, Patricia McHugh          |

DORIS LAPHAM '40



## Valentine's Day

Listen, you sport fans, and you shall hear  
Of a game played with Johnson this year.  
It was Valentine's Day, and as you know,  
A blizzard took shape in the form of snow.

The teams started out, and once or twice  
The driver or Cochrane from the windshield scraped ice.  
Upon arriving in Andover Town  
To their dismay the school couldn't be found.

The whistle blew, the first game of the night  
Found our girls trying with all their might  
To outdo this combine of friendly foes,  
But we were defeated, so the tale goes.

The other game was a different story,  
For the Chelmsford boys were bestowed with glory.  
A free-for-all took place on the court  
But concerning that I shall not report.

The homeward trek got underway,  
But the snow which had fallen caused a delay,  
For drifts of two and three feet high  
Were plainly visible to the naked eye.

Nevertheless, the girls of our teams  
Had stored in refreshments, so it seems  
For they were laden with chips, gum, and fruit  
But the boys, as usual, ate more in their group.

It was ten minutes past one, so someone said  
When she, one of the last, got into bed.  
Thus the fourteenth day second month of this year  
Will remain an experience worthwhile to hear.

—ARLENE SMITH '41



EDITOR-IN-CHIEF—PAUL BEAUREGARD

BUSINESS MANAGER—WILFRED FREMEAUX

**NON STOP FLIGHT**

Harold Speed just made a non-stop flight from South Chelmsford to East Chelmsford accompanied by his able mechanic, Vincent Wrigley. The reception committee headed by Mayor Chester Woodward was eagerly awaiting their arrival at THE ROBERT FIRTH LANDING FIELD.

**WHAT'S WHAT IN SPORTS**

By Ben Golubisky

Basketball coach, Al Angus of C. H. S., has proved to be a second John MacLaughlan, by producing a team which has had 17 straight wins in the Suburban league.

What's this about Don Grant making good as a first sacker for the Red Sox!

Ellsworth Winnette, the former C. H. S. football captain, has recently returned his contract to the Washington Redskins signed. His salary was not disclosed.

Bill Hennessey, president of the Chelmsford Rod and Gun Club, has just completed preparations for a trip to Africa where he will secure rare species of big and little game for the Michael H. Belida Institute recently established in North Chelmsford.

**POP CONCERT A SUCCESS**

Dwight Trubey again thrilled Chelmsford audiences with the superb music of the Chelmsford Philharmonic Orchestra. Under his direction this orchestra has grown in ability and fame. Guest soloists for the evening were the Misses Norma Wiggin and Irma Stanton of the Boston Opera Company.

**ACCIDENT**

Play boy Hamilton Lennox was involved in an accident this morning. His car was badly damaged but he escaped with minor injuries. It was feared at first that Lennox would not be able to finish making his new picture, under the production of Leman & Marinel, movie producers.

However, it was reported by Dr. Richardson at the hospital that he would be released in five days.

Nurses who attended him were Edith Burndrett and Glendyse Petterson.

**SOCIETY NEWS**

By Irene Pelletier

**FASHION SHOW AT KINNEL'S**

Miss Pearl Brooks presented at Hotel Kinnal the first New England showing of Mlle. Geraldine Cahill's latest fashions for the benefit of the Dr. Marilyn Bettencourt Clinic. Professional models for the show were Ethel Strobel, Dorothy Hansen, and Edith Johnson. Incidental music was furnished by John Trubey's Trumpeters.

**FIRE CAUSES SEVERAL HUNDRED DOLLARS LOSS**

A fire broke out this morning at the home of Mr. and Mrs. "Mike" Miskell amounting to several hundred dollars loss. Fire chief, George Hood with the help of his able assistants, Wallace Sanders, William Sullivan, and Vernon Burton arrived in time to save the cellar.

**A FOND FAREWELL**

A farewell party for Miss Barbara Hines was held last evening at the home of Miss Esther Quinby, local choir director. During the evening Miss Pauline Noel presented Miss Hines a gift in behalf of her many friends. The home was tastefully decorated with cut flowers and potted plants furnished by Ruth Thompson and Dolores O'Neil, proprietors of "The Flower Shop". Miss Hines leaves Chelmsford Saturday for New York where she will assume the managership of the Elite Beauty Salon on Fifth Avenue.

**FAMOUS WOMAN LAWYER WINS**

Before Judge Donald Gray, Patricia McHugh, famous criminal lawyer, pleaded the case of Oscar Ipanovitch, accused of murdering his opponent in a Chinese checker match. Although the case was before the jury two weeks before all the facts were stated, the twelve good men took but fifteen minutes to find the defendant "not guilty" due largely to the impassioned plea which Lawyer McHugh gave at the close of the trial. This plea, a masterpiece of oratory, quoted occurrences in her own life which helped to justify the deeds of her client and showed that he acted in self-defense.

**LOCAL ARTIST SUCCESS**

M. G. M. Pictures announces that William Coppen, top notch cartoonist will head their staff of animating artists and will have full charge of the production of that popular kiddie favorite "Three Blind Mice".

**PERSONAL**

Miss Gladys Bridgeford announces the opening of the Bridgeford Business School on September 10. Her staff will include Patricia Small, World's Champion Speed Typist; Mary Santos, expert on business machines; Elsie Bishop, famed shorthand specialist; and many other teachers noted in the business world.

Edward Berg, scientist and inventor, who has received the Nobel Prize for solving the problem of perpetual motion is on his way home from Sweden where his honors were conferred.

Nurses Mary Burns, Pearl Saunders, and Lovania Simpson have been sent by the Red Cross to help in the earthquake disaster in Guatemala.

Flint Manahan, commodore of the Pacific fleet was in charge of maneuvers off Hawaii.

Miss Irene Boucher, popular local teacher, is spending her sabbatical year in South America.

It should be noted that the unusual photographic effects in the much heralded movie "Twas A Dark And Stormy Night" coming to the Strand Theatre soon were produced by that famous camera man Glenn Wallace, a former local boy.

The co-stars of "Twas A Dark And Stormy Night" Jean Krivetz and Freeman Manahan reach the high point so far in their careers in this production. It is rumored that they also come from this town.

George Pope, ace salesman of the Roger Lapham Appliance Store, won a trip to Atlantic City for selling the most General Electric refrigerators during the month of April.

Miss Roberta Howie has returned to Chelmsford after a sojourn of six years in the Orient where she was governess of the children of the U. S. ambassador to China.

News has been received from Fred Taylor. He has been decorated by the government of Chile for developing a new process for mining nitrates.

**MISCELLANEOUS**

The Chelmsford Herald is proud to add another comic strip to its series. The new funny called, "The Man on the Flying Trapeze" was originated by Vernon Fletcher, Chelmsford's own humorist, will appear next week.

Gaudette's Gilt Edge Market will sponsor beginning Monday a question box, conducted by Walter Rosendale, versatile announcer over station WCHS at 12 noon daily.

Don't fail to see that famously funny feature "Oyster Crackers" starring those loveable comedians, John Murphy, Milton Hall, and John Hall. Manager Buchanan says it's the best show he has had at his theatre for a long time.

The Chelmsford Electric Light Company announces the opening of their Home Service Department under the capable direction of Miss Leona Zabierek, ably assisted by Julia Yeschanin. If you have any problems, Home Service will solve them.

Come and dine at Nick Zaher's New Nickel Plated Dog Cart. You will be received by his hostess Virginia Donovan. You will be served by his waitress Hazel Cann and Margaret Carey. You will be pleased with everything.

**WINNERS GO TO WASHINGTON**

Head of the Civil Service Commission, James Golden, announces the results of a recent examination. Top honors go to Stasia Oczkowski and Doris Lapham who will leave for Washington immediately where they will become personal secretaries to the President and Vice-President respectively.

**WOMEN'S CLUB MEETS**

Howard Nickerson, Dean of Nickerson School of Piano, addressed the Chelmsford Women's Club yesterday on "Music in the Home and in the Community". A short business meeting was held under the direction of Mrs. B., the former Josephine McDonough. The following matrons, Mrs. M., the former Gertrude Miller and Mrs. C., the former Frances Fox served delightful refreshments.

**MARRY TWINS**

A wedding of unusual interest occurred last evening when Miss Althea Garrow and Lieutenant Reginald Astorbilt and Miss Virginia Nath and Captain Archibald Astorbilt were united in marriage at a double ceremony.

The young women were air hostesses for the United Air Lines and the young men, twin sons of the millionaire automobile king, were pilots for the same company. They will reside in California after they return from their honeymoon.

**THE PEOPLE'S CHOICE**

Barbara Cleghorn, Joan Cahill, and Harriette Ford, popular swingsters, won national acclaim in the Major Bowes' Amateur Contest last Thursday evening over a country-wide hookup. Since they received the largest number of votes they now enter upon a radio engagement of 20 weeks and will be heard every Tuesday evening from 9 to 9:30 over WEEI on the Chelmsford Ginger Ale program.

## Baseball (Con.)

We, the non-playing students of Chelmsford High School, congratulate the great baseball team of 1940.

We, the pupils of Chelmsford High School and the sports-minded fans of Chelmsford, once again salute Coach Knightly for another colorful and successful ball season.

| Team       | <i>Chelmsford</i> | <i>Opp.</i> | Team               | <i>Chelmsford</i> | <i>Opp.</i> |
|------------|-------------------|-------------|--------------------|-------------------|-------------|
| Johnson    | 2                 | 1           | Methuen            | 7                 | 3           |
| Methuen    | 9                 | 8           | Dracut             | 22                | 1           |
| Dracut     | 19                | 3           | Howe               | 13                | 1           |
| Howe       | 17                | 2           | Punchard           | 8                 | 5           |
| Lexington  | 16                | 1           | Tewksbury          | 8                 | 0           |
| Tewksbury  | 6                 | 4           | Johnson            |                   |             |
| Lexington  | 8                 | 3           | Wilmington         |                   |             |
| Punchard   | 4                 | 0           |                    |                   |             |
| Wilmington | 10                | 4           | Total              | 149               | 36          |
|            |                   |             | Belmont (play off) | 0                 | 8           |

» » « «

## The Rise and Shine Club (Con.)

At the last meeting of the club, Edward Fox presented the club a framed pledge which the members adopted as their motto: "In joining the Rise and Shine Club, I pledge to improve my speaking ability, not only when I am in the classroom but at all times."

One of the finest results of this club has been that its members have realized, more and more, the importance of knowing and speaking good English in order to succeed in life.

AUTOGRAPHS