

The
Year Book
of
C. H. S.

1932

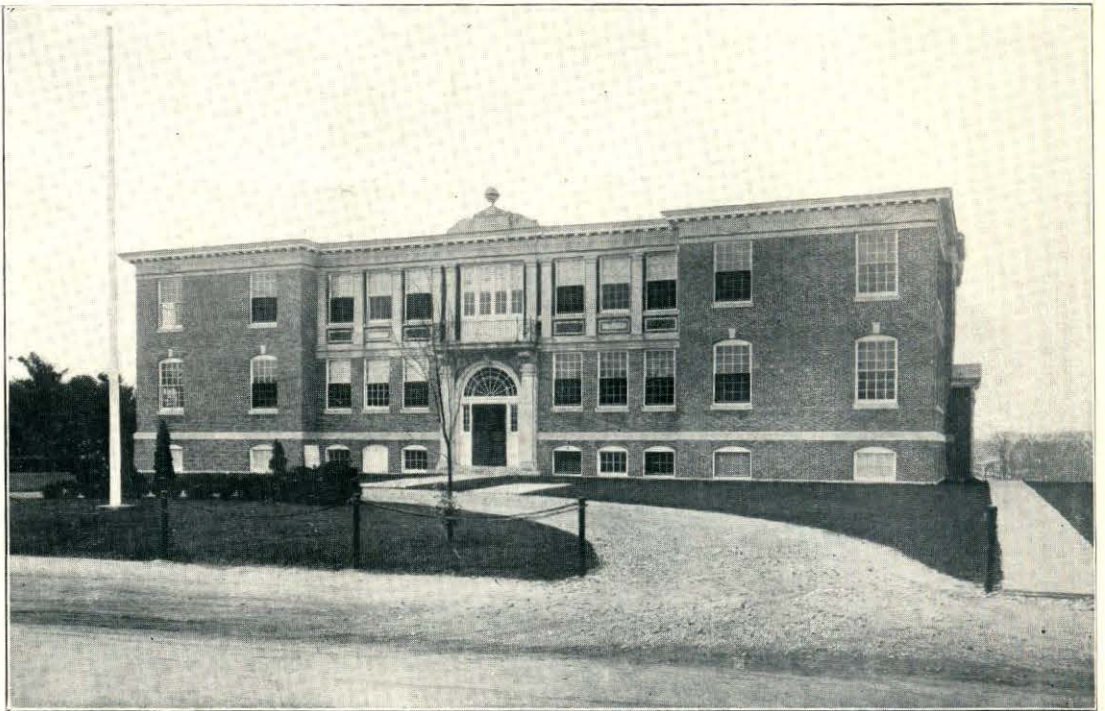


1932 Year Book of Chelmsford High School



Foreword

Friend, this book was ours that you might make it yours. If it shall find favor with you, then your trust and our labors have been justified. In after years when these intimate, tangible things which are today so near to us all and so much a part of our existence, shall have grown distant and elusive, then this chronicle of personal achievement and high school activities may recall to you the associations and friendships — humorous and pleasant — of your high school years with the attendant, immemorial aspirations and dreams of youth. Some may attain to material success, others may seem overwhelmed by the vicissitudes of fortune, but no soul is ever defeated so long as the spirit remains staunch. The beau geste of existence is to aspire. Life offers few occasions or opportunities for individual greatness, but to give to small things the same idealism as to the great is to invest the daily commonplace with a certain inevitable charm. Life is what you make of it. To live is a big adventure.



What sculpture is to a block of marble, education is to the human soul. The philosopher, the saint, the hero, the wise, and the good, or the great, very often lie hid and concealed in a plebeian, which a proper education might have disinterred and brought to light.—*Addison*.





Dedication

TO

HILDA B. DUNIGAN

whose unfailing patience, interest, and sincerity have been ever present in her faithful and intelligent work among us, the Class of 1933 dedicates this book.





The Builder

An old man traveling a lone highway
Came at evening, cold and gray
To a chasm deep and vast and wide.
The old man crossed in the twilight dim.
The sullen stream held no fears for him;
But he turned as he reached the other side,
And builded a bridge to span the tide.
“Old man,” said a fellow-pilgrim near,
“You are wasting your strength with building here;
You never again will pass this way,
Your journey will end with the ending day;
You’ve crossed the chasm deep and wide,
Why build this bridge at eventide?”
The builder lifted his old gray head,
“Good friend, in the path I have come,” he said,
“There followeth after me today
A youth whose feet must pass this way.
This chasm that has meant naught to me
To that fair-haired boy might a pitfall be;
He, too, must cross in the twilight dim;
Good friend, I am building this bridge for him.”

—*Author Unknown*



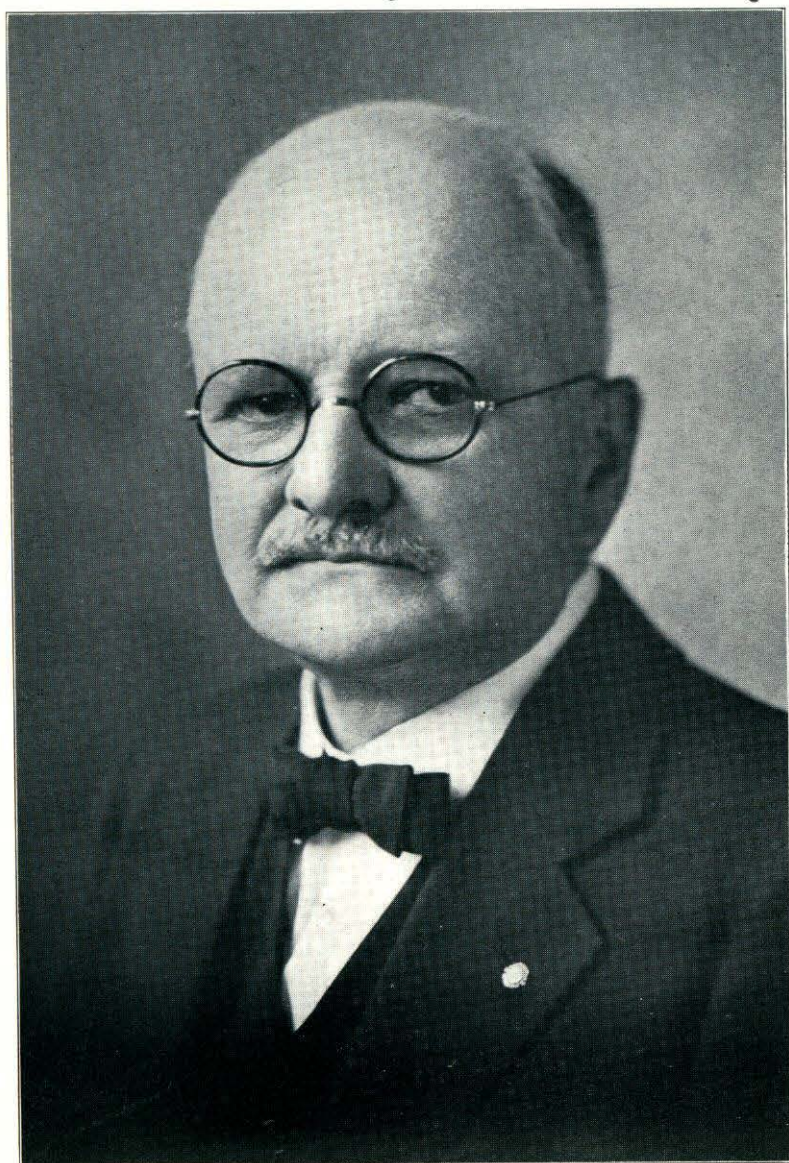
Administration



..... Books are yours
Within whose silent chambers treasure lies
Preserved from age to age; more precious far
Than that accumulated store of gold
And orient gems which, for a day of need,
The Sultan hides deep in ancestral tombs.
These hoards of truth you can unlock at will.

Wordsworth





George S. Wright

Superintendent of the Schools of Chelmsford





Students Of Chelmsford High School:

Every member of Chelmsford High School should, because of it, be happier than he otherwise would be.

First allow me in defending this thesis, to give you a definition of happiness. Webster says it is, "A state of pleasurable content with one's condition of life." This "condition of life" is dependent upon two factors, our own actions, which we control ourselves, and the actions of others, which we can control only partially, if at all.

I would have you think about your own actions and the actions of others which you can partially control, rather than about those of the people over whom you have no control.

What decisions do you make concerning your own actions upon which depends your "condition of life"? I would have each one of you answer this question for yourself; but to aid you in your thinking, I submit the following statement. You are more contented with life when:—

You are cooperating instead of competing with everyone with whom you work or play.

You are doing each task at the proper time to the best of your abilities.

You are budgeting your time so that you will have enough for play as well as for work.

You are conducting yourself in such a manner at all times that you can look back with pride upon your behavior.

You are using your influence to help others live the right kind of life.

You are not worrying about those things which you cannot remedy.

You are obeying the Golden Rule.

May you try to so live that you will be happy, and that you will help others to be happy in the true meaning of happiness.

Sincerely yours,

LUCIAN H. BURNS,

Principal.





Lucian H. Burns

Principal of Chelmsford High School

Lucian H. Burns

Edith McCarthy



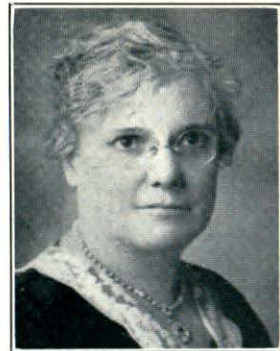
C. EDITH MCCARTHY
Vice-Principal
Salem Normal



F. CHRISTINE BOOTH, B. A.
Latin, Mathematics
Colby



ANNA B. MONAHAN, B. S. S.
English
Boston University



DAISY B. MACBRAYNE, B. A.
English
Boston University

Procter P. Wilson



PROCTER P. WILSON, B. S.
Science
Mass. Institute of Technology



GEORGE R. KNIGHTLY, B. A.
Social Science
Aurora

*Geo. R. Knightly
Coach - A. S.
Baldy our great
mound star. I
hope you will
all you win
for this tea*





HELEN R. WALTER, B. A.
French
Middlebury, Sorbonne



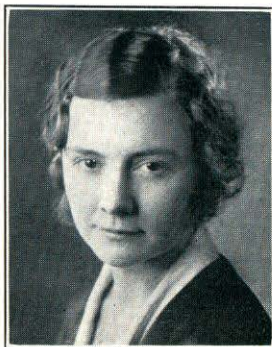
MORRIS L. BUDNICK, B. A.
Mathematics, Science
Tufts



MILDRED K. LIBBY, B. A.
History
Wheaton



MILDRED L. WELLS, B. A.
English, Mathematics
Boston University



CHARLOTTE L. HYDE
Supervisor of Music
Lowell Normal



MRS. MAE LEWIS, R. N.
School Nurse
Post Graduate Hospital

*the way you
catch these balls
is important
enough to be
remembered
like history
Mildred K. Libby*

Mrs. Mae Lewis





Our Home

We feel most thoughtful and contemplative as commencement time draws near, when for many of us, school days end forever. We have found so much enjoyment in our school, our teachers, and our schoolmates, that the parting brings with it a touch of sadness. However, we should be mindful of that institution which has stood behind us thus far and given us so promising a start—the Home.

School days are busy days. Thus, perhaps, we too seldom express our love for those who so generously care and guide us through the many hours which we spend out of school. Therefore, we pause to pay tribute to Home and to express our gratitude for what it has enabled us to do. We pledge ourselves in loyalty to reflect upon it and upon those loved ones who compose it, only credit, and, if possible, distinction and honor.

Home is the first love of every human heart, the nursery of infancy, the sanctuary of childhood, and the shrine of purest and noblest love. We, as students, little realize how necessary to us are the confidence and interest of our parents. We fail to appreciate that our finer characteristics come from our home training where we see displayed daily the most unselfish sacrifices.

For us, Home exists not so much in memory as in reality. It is and has been for us a living, vital, necessary factor. We are still dependent upon it, for shelter, for food, for clothing, for care in illness, for counsel and advice, and for the innumerable things that are the demands of boyhood and girlhood. Many sacrifices are demanded that we may have every possible advantage, more perhaps than we shall ever know unless the future offers us the same obligations with similar work and worry.

In our carefree, youthful way we have undoubtedly taken too much for granted at Home, even the anxious love of our mother and the protective pride of our father. Sharing always in their affection, ever sure of it, never doubting it, we may have seemed ungrateful. Perhaps our indifference may have been the cause of much disappointment and many heartaches. However, deep down in our hearts, we feel the significance of it all.

We, as boys and girls, cannot properly nor sufficiently express thanks to our fathers and mothers because we are unable to estimate correctly our indebtedness. As far as we can, sincerely, humbly, lovingly, we offer our gratitude. Our purpose is to show our appreciation by the virtue of our lives, to strive to make of ourselves something worth-while, thereby making our very best return to our Home and to our beloved parents whose love, care, and provident generosity surpass all remuneration.

“Honor thy parents, those that gave thee birth, and watched in tenderness thine earliest days, and trained thee up in youth, and love in all. Honor, obey, and love them; it shall fill their souls with holy joy, and shall bring down God’s richest blessing on thee; and in days to come, thy children, if they’re given, shall honor thee, and fill thy life with peace.”

MARGUERITE E. HOAR '33.



That in future years we may have fond recollections
of our high school days, this book is given us by the—

Board of Editors

ARLINE STIRK

HOPE WILSON

RODNEY BYAM

THELMA ANNIS

HELEN BURNDRETT

ELEANOR HAZELTINE

MARGUERITE HOAR

NORA MISKELL

EVA JESUS

MABELLE BIRTWELL

Editor-in-Chief

Literary Editor

Humor Editor

Art Editor

Social Editor

Sport Editor

Business Manager

Assistant Business Manager

Sales Manager

Advertising Manager

FACULTY ADVISERS

C. EDITH MCCARTHY

MILDRED WELLS

Business

Literary



Seniors

Soon you will be leaving us. Soon the many happy ties which we have interwoven will be abruptly broken. Your swords have been sharpened, your armor reënforced, and you are ready to go forth to slay the monster—Life. The Class of 1932 wishes you success in your task—the same great success which you as a body achieved here. We hope for you a wealth of all the good things of this world—of happiness—of friends—and we ask that in this new adventure you do not forget your old associates of the Chelmsford High School, who a short time hence, will follow you into the work of the world about us, to emulate your example in successfully putting to the test our present preparation for Life.



Seniors of 1932



JERRY J. DEAN

Class President '30, '31, '32 *A. A. Board '30, '31, '32*
Football '31, '32 *Operetta '30*
Basketball '30, '31, Capt. '32 *Latin Club '30, '31*
Track '29, '30, '31, '32 *Blue Moon '31*
Baseball '29, '30, '31, '32 *Year Book Staff '31*

Just "Jerry", the idol of us all!

The sport world willingly kneels its bulky form before our most famous athlete, the books of all ages clap their leafy hands together in praise of his scholarly achievements, and the social world regards him as a gentleman through and through.

For three years his hand has held the gavel that calls for order, and, were the school years more, his hand and voice would still preside over his class. A finer character is difficult to find within the wall of C. H. S.

The doors of life fling open wide for you to enter, "Jerry", and as you pass by us who stand guard outside the sacred portals, we fervently whisper, "Good Luck".

RUTH BERTHA BRIDGEFORD

"ROOKIE"

Vice President Class '32 *Executive Committee '30, '31*
Soccer '32 *P. A. D. Club '32*
Basketball '32 *Health Club '32*
Glee Club '31

"Oh, I'm so nervous!"

Those were the last words that "Rookie" said to her team mates before making her position as side-center. Truly, there was a need of them for "Rookie" was always sure of herself. In there were any bumps or bangs to be even averted, Ruth always seemed to get them and now, due to innumerable battle scars, she is considered a veteran of foreign wars.

"Rookie" faces the future with an undecided mind, but if she can't make up her own mind, someone else will for her. Who?

RAYMOND FRANCIS VENNARD

"SHORTY"

Treasurer '32 *Senior Play '32*
Executive Committee '30 *Year Book Staff '31*
Glee Club '29, '30, '31, '32 *Senior Prom Committee '32*
Operetta '30 *P. A. D. Club*

The port of missing hearts! (Feminine hearts, so to speak!)

The gallant Sir Walter Raleigh of the middle ages comes to life again in the person of "Shorty". (Likely as not, though, if a girl were out walking with "Shorty", and she paused at the first mud-puddle he would say, "Keep up your courage, girlie, there are deeper ones to wade through just ahead.")

"Shorty" is a born actor. The stage seems to be his playground, and what a game he plays! It must be his nonchalant attitude that captivates the audience!

It is his pet ambition to become a radio announcer. "Station L-U-C-K bidding you good-day."

RUTH ELEANOR STURTEVANT

"BABE"

Secretary Class '30, '31, '32 *Orchestra '31, '32*
Bank Trustee '31, '32 *Glee Club '31*
Senior Play Committee '32 *Health Club '32*

Another fine Murphy and Sturtevant, Incorporated! Murphy furnishes the jokes and "Babe" supplies the laughs. Yet we inquire how she is able to indulge so much in laughter without growing fat, for an old proverb states that rule.

In between times, "Babe" tickles the ivories with accuracy and skill in much the same way that she maneuvers her fingers over the typewriter keys.

Although she is leaving us to fulfill her ambitions at Burdett's College we shall still hear her laughter echoing through the halls of C. H. S. in years to come.



MARJORIE GIBSON ARMSTRONG "MARGY"
 Basketball '29 Health Club '32
 Operetta '30 Senior Play '32 Glee Club '29, '30

Every character is more or less mysterious to some person. On careful analysis of "Margy", instead of finding the usual unknowns a-b-and c, we discover that everyone understands these known and proven facts about her—namely—allurement, benignity, and cleverness.

The game of basketball held many interests for her. Although the black lines which divide the court have a significance, they mean nothing to "Margy". (Undoubtedly, a "No Trespassing Sign" would have been more effective!)

In April, Miss "Margy" moved to Providence with her family. It was a terrific blow to her many friends, to be deprived of her company,—yet they still live in hope, for she will return to us for graduation and reception exercises.

BESSIE MARGARET BENEST "Bess"
 Health Club '32 Senior Play Committee '32

Best of luck!
an excellent player
Don't miss her!
P. A. D. Club

The eighth wonder of the world! Who would ever believe that a girl could possibly go through four years of schooling without acquiring a voice above a whisper? True enough, she has always been active in school life, but she still retains the shy, modest voice of an underclassman, quite different from the commanding, authoritative voices of her classmates.

"Bess" excels in many lines. In studies and music, her laurels are most numerous. By enlarging upon these subjects we discover the following!—she has always been an honor student, and with faithful hours of practicing as a background, she is a skilled pianist.

In February, "Bess" will pack her suitcase and travel toward a spacious building called the Hospital!

The theromenters will burst for joy, and the surgical instruments will cut fancy figures when you enter, "Bess", because they know what a wonderful nurse you'll be!

ELIZABETH BRENNAN "LIZZIE"
 Health Club '32 P. A. D. Club '32

Bid cares adieu, sorrow, grief and gloom begone when "Lizzie" approaches. There is more originality in this livewire than in P. M. Cook's one man band, and more fun in this jester than all the jesters of old could ever conceive. She certainly flies when she is with you.

Best of luck!
Don't miss her!
P. A. D. Club

"Lizzie" excels in acrobatic stunts. In previous years, she always exhibited her headstands, somersaults, and cartwheels on Field Day amid the applauding and cheering of classmates and parents. Now that gymnastics have been excised from the school curriculum, she performs for her private "gang" at lunch hour.

"Lizzie's" patients will never be able to nurse the blues for she will shoo them away. Best of luck, "Lizzie."

HELEN MARGARET BRENNAN
 Health Club '32 Senior Play Committee '32

Mother nature was most generous in bestowing kindness upon Helen. In truth, a more sympathetic, benevolent, or gracious person has never entered C. H. S. She practices the real meaning of the word friend and proves to us the old adage, "Real friends are like diamonds, precious and rare."

Helen will long be remembered as the charming bride in the Health Club play who, clothed in exquisite clothes and carrying a beautiful bridal bouquet, (?) was bound by the holy bonds of matrimony to the Beau Brummel, "Paddy O'Brien".

The blue uniform which she will don as a novice, will symbolize Helen's true-blue spirit of friendliness.





BELLE MURIEL BRIDGES

Health Club '32
P. A. D. Club '32

Stamp Club '32

It is hard to conceive of the sweet long ago, when, in this reckless generation, everything seems to be done rashly and thoughtlessly. The powdered wigs, the stately minuet,—seem impossible, don't they? To fill the description of the demure lady of the past in every minute detail would be very difficult for anyone except Muriel. It seems as if we should courtesy or bow when she passes by. There are no noisy steel clickers on her shoes to invite attention, for she prefers to attract people by her winsome, calm ways instead of by boisterous means.

Studies come before activities in Muriel's estimation. She has done a fine bit of scholastic work every year. Normal School may well be proud of you!

RAYMOND I. BUCHANAN

"Buch"

Football '31
Basketball '32
Baseball '31

A. A. Board '31, '32
P. A. D. Club '32

Football owner of the seven league boots, and the owner of the stride that measures fifty-four inches. The long walk from the Westlands is considered a "neat little stroll" to "Buch". It must be heavenly not to tread so much gravel in the course of a day and yet cover just as much ground. Consider the shoe-leather he saves!

In the commercial department, "Ray" is a wizard. He is always lending his budget or trial balance to some despairing female.

Great men in history never looked upon work as an undesirable task,—neither does "Buch", therefore, we predict a glorious future for him!

ELIZABETH L. CHALMERS

"BETTY"

Soccer '32
Inter-class Basketball '32

Senior Play '32
Health Club '32

Onward Camp Devens' Soldiers
Marching as to fame
Escorting "Betty" Chalmers
To a football game!

This is one of the trio of the famous Boswell sisters. "Betty" enjoys athletics immensely, excelling in pyramid building and tumbling (both on the mat and for the opposite sex). She was a great asset to the soccer team and also to the Senior inter-class basketball team.

Next year "Betty" will go to Boston to attend the Sargent Athletic School. What a physical director she'll make!

HELEN FRANCES CHRISTOUN

"CHRISTIE"

Soccer '32
Basketball '31, '32

Senior Play Committee '32
Health Club '32

As the basketball leaves the referee's hands, our center springs into the air and taps the ball nonchalantly to the desired place. Thus "Christie" gained for herself the name of an excellent basketball player—and she was there on every pass.

This is not the only school activity in which she participated. For the Health Club just couldn't run without her. (Remember the ring-bearer of the Mock Wedding who wore the pink whosises—that's "Christie").

May you always be able to give ether in the correct amounts, future nurse!

Good weather for me. 9
If he had a nice girl like me, he'd be a lucky fellow!
Best luck for basketball!
Good luck for the future!



RUTH EMMA CLARK

Health Club '32

P. A. D. Club '32

"Isn't it good when life seems dreary
And your hopes about to end,
Just to feel the handclasp cheery
Of a fine old loyal friend?"

Ruth is a true-blue friend. Just to watch her contagious smile curl up the corners of her dainty mouth would make the most disgruntled person feel relieved of the burden that was weighing so heavily upon him.

She has an attractive head of hair. The even waves, resembling the ripples of a restless brook, show her deftness in the art of hairdressing. Just give her a little water, a comb, and a few bobby-pins, and she can make the straightest locks look like a permanent wave.

To Tewksbury,—to be a nurse. We wish you God-speed.

ENID MERCELY CLEMENT

Health Club '32

P. A. D. Club '32

Senior Play Committee '32 Glee Club '29, '30, '31, '32

Artistic, to say the least!

At every school function that the Senior class ran, "Enie's" artistic temperament was portrayed in the decorations and drawings which graced the hall.

Moreover, she is a witty person. A group of girls comprised of rare characters from North and West hail "Enie" as one of their members. She's always saying something pappy to give her class a laugh.

The class of '32 has little fear of sickness since many of its members are going in training. Doctors, we feel certain "Enie" will be an obedient, capable nurse.

PAUL CLAYTON CORNWELL

Vice President P. A. D. Club '32

Radio Club '32

The latest addition to the group of odd, strange, and curious cars that roam the roads of Chelmsford is a Model T Ford, owned and operated by "Corn". Although the seating capacity is limited to two persons (if that, three might be allowed), nevertheless, by making use of the mud-guards, spare-tire and sundry other obscure perches, seven seems to be a comfortable load. The car coughs and sneezes continually but that was thrown into the bargain.

"Corn" is an excellent chemist, usually trying to find out if he's really does smell like putrid eggs, or to find out the composition of human skin.

Radio interests Paul and we just know that he will either be a chemist or will be employed in installing radios in delapidated Fords. Due to his dependable workmanship in any line of business, we just know that "Corn" will come out on top!

GEORGIA TARR DAVIS

Latin Club '30, '31, '32

Health Club '32

Glee Club '32

Senior Reception Committee '31

Bank Trustee '31, '32

Senior Play Committee '32

Culture and refinement are plainly written upon Georgia's features, and politeness and scdateness are her outstanding characteristics. If one is able to break through these traits of character, so her most intimate friends report, then can one see the more humorous and witty side of Georgia.

Her knack of writing stories is extremely interesting because of those human touches that play upon one's innermost emotions, a thing lacking in the average composition. There is always the swish of hoop skirts and the scent of lavender sprinkled here and there across the pages.

Miss Davis will enter Simmons College in the fall.





LILLIAN M. DUPRAS

Glee Club '31

Bank Trustee '31, Treasurer '32

"Lil"

Health Club '32

Now we know why fifty million Frenchmen can't go wrong when we look at "Lil". "Notre petite made-moiselle, vous êtes charmante! Les lèvres et les yeux—ooh-la-la!"

Miss "Lil" is the smallest member of the class. To see her walking down the hall, you would think she were a tiny Freshie, but when your gaze really encountered "Lil" face to face, you would see reflected in her countenance the qualities that only a Senior can display.

Her hand-writing is ever present on the middle of the black-boards (her height permitting her arm to reach no higher) in the form of "Banking Day, Thursday."

There is a voice calling from the future—calling her to high ambitions in the business world. We know she will heed the call, and reach that golden haven "Success".

ADELHEID ELLIOTT

Salutatorian

Bank Trustee '31, President '32

"ADDIE"

Health Club '32

In every class there are those who try to bluff through each year, but the ones who count are those who put their best foot forward and firmly resolve to gather, in the greatest quantity, all the knowledge that schooling offers. "Addie" belongs to the latter group. In her four years at C. H. S., her name has always been present on the honor roll and as a reward for her patience and diligence, second honors have been bestowed upon her.

Although rather quiet, "Addie" has played the big sister rôle to many. As president of the bank, she made an able leader, and we sincerely hope that the underclassmen will profit by her good work and aspire to her attainments as an ideal toward which to strive.

PRISCILLA BRADFORD EMERSON

Health Club '32

"PRISE"

"Gid-di-up, Napoleon, it looks like rain!"

"Prise" is an accomplished horse-woman and loves to spend her spare moments galloping and trotting over the fields of Arcadia—oh, oh, our mistake, we meant Chelmsford.

There are very few girls who are able to boast of as many merits in Scouting as "Prise" can. The right arm of her Scout uniform reminds one of a fancy patchwork quilt, but on further inspection we find there to be merit-badges that she has won during her years as a Girl Scout.

Priscilla has not yet decided what work she will undertake. As you travel along life's highway, may success reward you in every task you encounter!

JOSEPHINE MILDRED ERIKSEN

Health Club '32

"RED"

Senior Play Committee '32

What a marvelous discovery!—A flaming head of hair and a pleasant disposition never before in the history of mankind has such relationship existed.

She may well be called the "It" girl of '32 because she possesses all the qualities of Clara Bow—a winning smile, sparkling eyes, charming, individuality in clothes, —and she is a complete "bonfire" herself.

"Red" has been seen in plays many times at the Town Hall when a local production was being presented. Those who have witnessed these sketches can appreciate the humor with which she is blessed, but which is very seldom displayed about school.

Very shortly, if her ideas materialize, "Red" will be making hospital beds, carrying trays, etc., thus paving the way toward the pinnacle of success!



Best of luck
next year
at Springfield
"Prise"



MARGARET THERESA FOYE

Asst. Mgr. Basketball '32
General Committee '29, '30, '31
Health Club '32

"MARGIE"

Glee Club '30
P. A. D. Club '32

In the fairy books you read, you always found the heroine to be a beautiful princess with long golden curls. Such was the description of Margaret when she entered C. H. S., golden curls hanging down her back. Then from out of nowhere there came a Prince Charming and when the modern princess overlooked his affections, he snipped a curl as a souvenir and returned to nowhere.

Another year rolled by and what a change occurred, for the princess did up her curls. Rumors have been spread about that this change in coiffure has been for the best.

Business college is Margaret's next goal.

ELEANOR ANNAMAY GAUDETTE

Health Club '32

"GIRLIE"

Senior Prom Committee

Poets have made verses about it, authors have written about it, and vocalists have sung about it—"The Silver Lining". This mystical disposition is supposed to be a means by which we can see "the sun come shining through". Would it not be most appropriate, then, to call Eleanor our "Silver Lining Girl" instead of "Girlie", because when she is around, Old Sol beams down very brilliantly!

"Girlie" is a very efficient commercial student. Most of her spare time is spent in Room 3. Her ability to take dictation is most notable, and consequently the green eyes of envy are often upon her for her exactness and accuracy in this work.

It is altogether fitting and proper, therefore, that she enter the spacious future as a girl best suited for office work. Luck and best wishes from us to you!

MARION GREENLAW

P. A. D. Club '32

"MIA"

Health Club '32

There is an old saying which states that "the way to win a man's heart is through his stomach". In other words, one must be a good cook to be the proud possessor of a male. Personally, we all agree that if the person who wrote that had seen Marion, he would have worded the last part thus, "by having a gorgeous head of hair that is the constant envy of all". She is also noted for owning the rarest and oddest of jewelry.

Her perfect manners and fascinating ways are admired and looked up to by all underclassmen. In addition, keenness in studies finds first place among her qualifications.

As a nurse, there can be nothing but good luck awaiting her.

LYSLE W. GREENLAW

Operetta '29

Glee Club '29, '30, '31

It was a lucky day for Lysle when the architects who modeled our school agreed to have high doorways, for had they been the least bit lower, he would have had to stoop on entering.

Getting away from length we next pass on to width. Just ordinary. Then, volume. Ah, here we pause! Lysle possesses a tenor voice which certainly appeals to the ear. Organizations and community societies always have Lysle sing. (On second thought, wouldn't he be welcomed at any nursery to sing lullabies! All right, you big babies, stop the crying. Oh! these girls.)

Outside of school, Lysle spends most of his time at the Chelmsford Ginger Ale Company. After graduation, he intends to be a bookkeeper there.



ESTHER FRIDEBOG HEDLUND "Es"
Health Club '32 *Conduct Committee '32*

Scientists have discovered that over thirty muscles of the face are required to produce a frown while only twelve are needed to effect a smile. At that rate, "Es" resolved to save those organs a long while ago, and for some time now she has been a member of the "Sunshine Club".

"Es" has been extremely busy on O periods Tuesday and Friday. At the beginning of the year she was chosen librarian of the Junior and Senior music division, and has always been prompt in giving out the "little brown pamphlets", and the "big red books".

Miss Hedlund will embark upon the ship "Good Fortune" at the end of the school year and the needle of the ship's compass will point toward "Office Work". We shall all be waiting when your ship docks in the harbor of "Success" to give you a grand ovation and a hearty hand-shake!

MARIANNA HEMENWAY "DETOUR"
Basketball '32 *Glee Club '30*
Soccer '32 *Health Club*
Athletic Ass'n., Secretary '32 *Senior Play Committee '32*
Blue Moon Staff '32 *Senior Prom Committee '32*
Latin Club '30, '31, '32 *Class Day Committee '32*

A good sport! The words suffice for themselves. Whether on the floor as a participant, or on the side lines of a football field or baseball diamond, cheering others on to victory, "Detour" is a sport through and through.

At noon-hour we hear a faint voice calling, "Candy, last call for candy," and recognize our good sport "Detour".

College days at Simmons await Marianna!

HUGH CAHEY HILL "HILLY"
Baseball '32 *Inter-class Basketball '28, '32*

In the spring, a young man's fancy lightly turns to thoughts of—(?)—planting potatoes, cucumbers, radishes, etc.

Regardless of the season of the year, "Hilly's" thoughts seem to turn toward Room six. That's the freshman room, isn't it? (Can it be that "Hilly" is trying to teach some freshman boy how to play basketball? Believe it or not!)

Hugh is one of the East Chelmsford tribe who rides in "Brick's chariot. He can generally be seen hanging on for dear life when "Brick" makes a corner on one wheel (for his equilibrium where leaning is concerned is inclined to be rather upset).

His profession seems to be office work. Three rousing cheers for Hugh! Rah, rah, rah!

DOROTHY EDITH HOELZEL "Dot"
Health Club '32 *P. A. D. Club '32*

The world is full of "beginners", but "finishers" are hard to find. We are proud to say that "Dot" is just the type who completes every undertaking.

The above seems to render the belief that "Dot" is more or less a serious sort of feminine goods. Although that may be very true (for she may have her serious moments when in Hupmobiles) we generally conceive of her as being the fair damsel who owns the contagious giggle that is always penetrating the dormant air of the locker-room.

"Dot" has reached the fork in the roads that we all face upon leaving High School. The road is a steady incline known to us all as the future. As a general rule such cross sections are marked with signs such as "college"—right; or "training"—left. Since this is not the case, and the by-ways are unmarked—take the middle road, "Dot", to "Success".





MADLINE LORNA JENSEN "MAD"
Blue Moon Staff '31, '32 Senior Prom Committee '32
Health Club '32 P. A. D. Club '32

While most of us find it hard to even draw our breath we wonder how Madeline can produce such fine art. Her fingers have been ever busy along this line and the Blue Moon and Year Book of '31 are living volumes of her skill.

Madeline has been unfortunate, due to the fact that sickness and delicate health have kept her out of school for many weeks at a time. Nevertheless, you can't keep a good man down, and "Mad" has proved that by sticking it out to the finish.

"Mad" has always been busy attending to her commercial studies and soon she will be earning her daily bread doing office work.

EVA AGNETA JOHNSON "JOHNNY"
Valedictorian '32 Senior Prom Committee '32
Latin Club '30, '31, '32 Health Club '32

"Better than gold is a thinking mind!"

High place in studies is the coveted goal of us all. The class of '32 feels extremely proud to have one of its members the highest ranking student in school. "Johnny" never has had to experience the creepy feeling that a flunk card or an afternoon session slip was descending upon her.

Don't fool yourself when you say "Johnny" is quiet, because you only have to start something and then she's right there for the finishing touches.

There are honors awaiting you at Salem Normal.

RAYMOND B. JOHNSON "SWEDE"
Year Book Staff '31 Executive Committee '32
Senior Play '32 Radio Club Sec.-Treas. '32

From out of the wildest part of Chelmsford, the South Village, comes "The Terrible Swede." Nevertheless, he is quite harmless and in his spare moments may be seen working industriously at the First National Store.

Raymond is a very able commercial student, his rating being fourth on the graduating list. Probably his accuracy in figures is explained by the fact that he's always adding up some one's bill.

"Swede" has always been more or less (mostly more) a lady's man but this year takes the prize, for he's fallen more times than Peggy Joyce has. A second Lou Tellegen! Blonds head the list!

"Bonne chance," Monsieur of our Senior Play!

WALTER TRACEY JOHNSON "NIPPER"
Executive Committee '31, '32 Senior Play '32
Football '32 Glee Club '29, '30, '31, '32
Basketball '30, '31, '32 Operetta '30
Baseball '30, '31, '32 Senior Prom Committee '32
Year Book Staff '31 Committee of Awards '31
President Athletic Association '32 P. A. D. Club '32

Stop, look, listen, and then behold the irresistible, reprehensible heart-breaker, "Nipper" Johnson. When he passes a group of girls in the corridors, there are more "ohs" and "ahs" than you ever heard at a throat clinic. Between dates, he finds time to play in every sport and to play so well that professional players envy him.

In his interpretation of the role of Donald Swift in the Senior Play, "Nipper" exhibited much talent, and as the president of the A. A. Board, he could not be surpassed.

We rest assured that his athletic ability will be put to the best advantage at Springfield College next year.



Remember
 our English
 class.
 Best of luck
 Johnny

Give
 this
 to
 the
 boys
 who
 are
 interested
 in
 sports

May success
be with you forever
throughout your life.
Oscar



JOHN FREDERIC KINCH "OSCAR"
Executive Committee '32 Operetta '29, '30
Football '29, '30, '31, '32 Glee Club '29, '30, '31, '32
Basketball Mgr. '30, '31, '32 Blue Moon Staff '32
Baseball '29, '30, '31, '32 Year Book Staff '31
Track '30, '31 Senior Play Committee '32

"Across the great divide, I'm waiting, Mary."
 With a minute, "Oscar", you weren't intended to be a crooner of love songs, you were fashioned to be a business manager. It has always been "Kinchie" who kept the basketball scores straight, "Kinchie" who managed this and managed that, for better for worse, for richer or poorer, for victory or defeat. What-a-man!
 "Oscar" can do most anything. He played an important part in the operetta "Hulda of Holland", he has entertained us at many assemblies, and he can eat his share of peanuts any day.

We know that you'll manage well next year at Boston University, John.

MARTHA ALEXANDER KIRK "MAK"
Executive Committee '29 Glee Club '29, '32
Blue Moon Staff '32 Health Club '32
Senior Play '32 P. A. D. Club

Some say it with flowers but "Mak" says it with poetry. Every issue of the *Blue Moon* boasts of at least one poem with the familiar signature below of M. A. K. Moreover, "Mak" is quite skilled in the art of oratory, and as "Annie" in the Senior Play we were able to enjoy this talent.

If you should chance by the office between 8 to 8:30, you can see Martha either busy at work fulfilling her position as office girl or distributing paper to the various rooms to be used for those beloved exams or prohibited notes.

"Mak" will continue her commercial studies next year at Salem Normal School.

JEANETTE GRA LOISELL "JANEY"
Health Club '32

If we were to consider the Senior Class as an electric system, we would declare that "Janey" was one of the outstanding live wires. These wires, nevertheless, are almost essential to the complete operation of the machine, and that is what is needed in the Senior Class. Although at times that particular part of the machine is inactive, there always comes a time, when responsibility is placed upon it, she holds true of the group of '32. "Janey" may not always stand forth in the front lines, but more than once have her classmates depended upon her.

Worcester Hospital is going to be "Janey's" next stopping place. We heartily wish you happiness.

LILLIAN AURORA LOISELLE "LIL"
Health Club '32 Glee Club '29, '30

Loyal — Industrious — Liberal — Lady-like —
 Independent — Amiable — Neat

The seven adjectives mentioned above are able to give us only a minute description of "Lil". To tell the truth, the words of the English language that comprise that large book known as the dictionary, seem inadequate to describe her. (If English adjectives must be used, then let them be employed in the superlative degree!)

"Lil" has a charmingly sweet voice, the Glee Club vouching for that statement, and we think that perhaps she sings to the fruits and vegetables on her farm to make them grow faster.

Undoubtedly your future career will be connected with a typewriter—may your fingers ever loiter around the letters that spell,—"happiness and success"!





GEORGE T. LORD, JR.
Baseball '32

Radio Club '32



The 'ancient bards were known to have chanted phrases such as:—"The rocks will break their silence and the waters of the floods will clap their hands for joy." — In truth, those things seem as impossible to us as seeing George really let a boisterous yell come from the unknown caverns of his mouth.

George's High School lost a very good mathematician last year when George joined our number in September. He delights in solving the mysteries of physics problems and in venturing into the comparatively unknown field of science.

George plans a glorious future. His chosen career is that of a civil engineer. He will enter Mount Hermon next year in preparation for M. I. T. where he will enroll in 1935. May your compass draw angles of happiness and your surveying instruments sight success.

ARNOLD FRANCIS LOVERING
Executive Committee '31

"BEN"
"Crisis" '30



It is easy to judge from "Ben's" polite and courteous manners that he is a very well-bred young man. We are further assured of his fine character when we stop and think of all the affection he has always shown his sister. Lucky sister, say we!

We pause to ask a very informal question. "Has anyone ever seen "Ben's" hair out of place, his necktie askew, or a speck of dust on his suit?" Neatness is Arnold's by-word, but good looks might well be used in place of neatness.

He wields a mean touch on the typewriter keys, but after such progress in dancing who can tell whether he'll be employed in an office or turn out to be a dancing teacher himself?

MILDRED CATHERINE LUKES
Health Club '32

"MILLIE"



Beauty experts have often quoted the short phrase, "The eyes have it". Certainly they were thinking of "Millie" when they originated that, for her eyes are the means by which she expresses her every emotion. Sometimes they signify a pensive mood, then again it may be indifference, but more often they are being "rolled" at some weak-hearted male. This fetching act is usually accompanied by a pert toss of the head and a neat shrug of the shoulders. Do you wonder the "he-men" have to shudder?

As a commercial student "Millie" was O. K. and as a sports enthusiast she was K. O. She could adapt herself to any company, a difficult accomplishment for many people.

Another one of our girls falls into the ranks of nursing and we know she will march straight ahead to the front lines of happiness.

EDITH EVELYN MACHON
Senior Play Committee '32

"EDIE"
Health Club '32



Who is so rare as a day in June?—Oh, we know — to find a girl with a "true" complexion—that is to say one that doesn't come out of a compact. "Edie" is most fortunate to possess such rosy cheeks. (Then too, she wouldn't sprinkle powder and rouge all over the shoulder of your pet blue serge suit, my fair young man.)

When "Edie's" around, there is always something to be whiskered. No matter where she is, if a new secret pops up in her mind, she simply has to spill it to the one nearest her—that generally being her constant body-guard and attendant, "Bess".

Edie is the future



VERA MARION MacLEAN "Blondie Mack"
Soccer '32 Health Club '32
P. A. Club

Our ancestors, when sailing on certain expansions of water, feared the sirens who lured them to their doom. These mythical characters were supposed to be blonde maidens who charmed beautiful lays. Now, if Vera had lived in the era of the past, we would not be surprised to have heard that she, too, had brought some one back with the mighty waves.

"Blondie Mack" was a great soccer player and helped her team in winning the class championship. Then, too, she was always on the side-lines of a varsity game giving some one an inspiration.

After you have completed your P.G., we shall be waiting to see your name shine forth from the top of some large theatrical building.

DOROTHY EVELYN MacNEILL "Dot"
Senior Play Committee '32 Health Club '32

Never put off until tomorrow that which can be done today!

"Dot" is the best example of that adage to be found in the class of '32. Those who were fortunate enough to work under her on the Senior Play Committee, assure us that no job is too large for her to tackle. The work that she put into that particular undertaking corresponds in worth to that of a leading part in the production, but, just because she didn't inform us publicly of her work, there is hardly one of us who is conscious of that fact that she helped at all. Remember, it's never too late to give thanks.

Venturing forth into the world in search of higher learning, "Dot" will choose a business college as her guide. Although the way may be rough, we feel sure that the mountain of difficulties will be overcome and that in the end you will stand on the crest marked "success".

LUCILLE MARIE McENANEY "L.U."
Health Club '32 Senior Play '32

Red headed baby you're driving me wild. When first we knew "L.U.", she had long curls, but as styles change very fast, who could blame her for exchanging them for a sandy wind-blown bob? Her titian loveliness dotted here and there by beauty spots (freckles in person), has been admired by every one who knows her.

Without the list that "L.U." cultivated for her part in the play, the production would have lacked color and life. Many of her schoolmates thought that perhaps she really did lip in every day life, so that proves she is a girl of few words.

We offer our most sincere wishes of best luck for you, Lucille, in the business world.

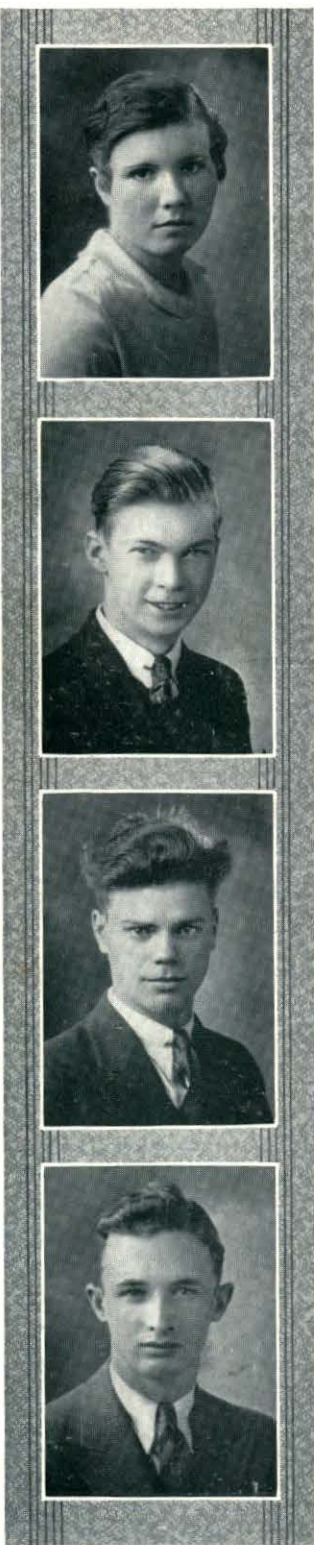
THOMAS B. McENANEY "Mac"
Football '30 Track '30, '31, '32
Basketball '30, '31, '32 Baseball '30, '31, '32
Latin Club '30, '31, '32

"OH! Dashing youth of knight hood days, take me upon your white stallion and let us flee to some enchanted castle. Everything would be all right with you and me and your moustache." ("Mac" is the answer to every young maiden's prayer.)

Every sport knows "Tommy" perfectly well, his most outstanding characteristic being his coy way of tantalizing females. He has the art of self-defense, too, and not infrequently may be seen making some delicate under-classman ask for mercy and forgiveness.

It seems unbelievable that "Mac" could remain quiet long enough to attend Business college. Time alone will tell.





RITA MARIE McTEAGUE
Interclass Basketball '30, '32
Vice-President Health Club '32

"REA"
Senior Play '32

If you don't speak, you'll never say anything! There's no danger of "Rea" not talking, because she is a very loquacious person and constantly puts this characteristic to the best advantage. Before school, between classes, during classes, at noontime, after school or any time you see "Rea", she's always talking, either about last night's party, tonight's dance, or next week's date.

Inter-class basketball disclosed a great guard in the person of "Rea", and she's right there when it's time to cheer!

She is the "spice of life" among the Senior girls, and should you feel "moody" just stay with "Rea" for a minute and you'll be bubbling over with joy!

We feel certain that the patients in whatever hospital "Rea" chooses for her training, will be well posted on the current news and gifted with a true friend.

LESLIE MILLS
Glee Club '30

"LES"
P. A. D. Club '32

He's such a bashful boy in school, but what a difference he makes outside! On leaving school, "Les" takes off the mask of shyness and becomes really humorous. One day some one is going to find the place where you put that funny face and destroy it, so that you will be humorous all the time.

Who is this we hear? There seems to be a certain sophomore kind with the name of "Les". How long has this been going on? What is the younger generation coming to?

All joking aside, "Les", we have enjoyed your companionship for these four years and wish you victory in this life of battle and strife!

FRANK MORRELL
Football '28, '31
Inter-class Basketball '29, '30, '31

"BRICK"
P. A. D. Club '32

Cars may come and cars may go but "Brick's" Ford will go on forever! The vehicle in which "Brick" drives his East Chelmsford tribe around, reminds one of an old fashioned one-horse shay with a bad case of dropsy. It is guaranteed to go either on its own power or by man-power. Push, boys, push!

Morrell played an important part as a back-field on last year on the gridiron. When others failed to break the line of defense, "Brick" mashed through every time with at least a two yard gain.

We all miss you and your car, "Brick", as well as the many laughs you gave us while playing Inter-class Basketball.

ROBERT FRANCIS MURPHY
Baseball '29

"MURPH"
Senior Reception Committee '31

A shave and a hair cut, ten cents!

"Murph" can give you as good a shave and hair cut, plus a few scratches and scrapes thrown into the bargain, as you can get anywhere this side of East Gilloppe! Last year he did a rushing business when the Harvard cuts were in full swing. Now that the depression has hit the barber business, and the business is rushing right by the door, his thoughts and his time are turned toward Lowell with an uncanny desire to center around Pawtucket Street!

Now, should "Murph" happen to ask you to "save the last dance for him," be sure to do so. His partner, nevertheless, is generally the same Miss with the wind-blown bob.

Like father, like son—"Murph" is cut out to be a barber!



RUTH LILLIAN MURPHY "PAT"
 Health Club '32 Senior Play Committee '32

"Just look at my nose shine! You can bet your boots I'm not going to class like that. Say, girls, I'm sure you all want to help a sister in distress, so how about borrowing your pet powder puff with a daub of powder on it for just a minute?"

"Pat" is a wonder! Ever since she first stepped into C. H. S., there have been more cases of heart-trouble and high blood pressure reported among the opposite sex than a doctor usually encounters during a life time. If you're one of those hard-hearted males who simply won't fall, just keep out of "Pat's way or you'll be falling all over yourself.

Consider the lucky people at Burdett's College who will make "Pat's" acquaintance next year!

CHARLES NICHOLS, JR. "CHARLIE"
 Vice-President Class '29 Operetta '30
 Football Mgr. '31 "Crisis" '30
 A. A. Board '31, Treas. '32 Blue Moon Staff '31, '32
 Latin Club '30, '31, '32 Radio Club '32

When in doubt as to who can best serve on a committee, who can sell the most tickets, or who would look best as your partner on a dance floor, just call on "Charlie". Although he never boasts of his many merits, we all know him to be a jack-of-all-trades, capable of filling any position.

The profits gathered from the selling of the "Blue Moon" have been exceedingly large since "Charlie" has been editor-in-chief. Well, who wouldn't buy the paper when the editorials alone are worth the price of the whole paper?

Every possible success attend you at Dartmouth.

MILDRED PRISCILLA NORTON "MILLIE"
 Glee Club '30, '31 Health Club '32
 P. A. D. Club '32

From ocean to ocean everyone knows and realizes the charm and allure of blondes. Now, "Milly" is no exception. She's blond, small of stature, and charming of personality. Therefore, it is of little wonder that her friends number many and her admirers surpass all beliefs!

In the game of life, everyone must be a good sport in order to withstand the occasional fouls and misplays that are chalked down against their names. "Milly" has always been just such a participant and consequently the chalk marks are few and far between.

Neatness, dependability, and a pleasing disposition are the qualities required of a girl desiring to go in training. As "Milly" possess all these, success is inevitable.

CARL HERBERT OLSON
 Baseball '28, '30, '32

Came the dawn, and Carl was still arguing! How often have we heard him say, "Pardon me, but I don't agree with you". Now anybody can argue, that's simple; but Carl could make you believe your first cousin was your great-grandmother's nephew. Ah, it's a gift!

Some people are placed behind metal bars so the world may be a safer place to live in, others are held there because their art of dodging the bill collector proved unefficient, but when Carl puts his face behind the metal bars of a catcher's mask, we know everything will be O. K. Say, he'd run a mile for a foul ball. Then again when he gets up to bat, there are no "flies" on it; no sir, they're all non-stop flight-bits.

Don't get lost while taking up forestry!





FRANCES JANET PAIGNON
Health Club '32

"PEGGY"
Senior Play Committee '32



Dame Fashion reigns supreme whenever "Peggy" is around. Smart styles with alluring chic are just what "Peggy" wears. They are of such quality, and made with such skill, that duplicates are never seen.

This same "Peggy" person is quiet and reserved. It seems that Father Time opening one of his volumes of the colonial period, picked from its pages this well-mannered, sympathetic maiden, and then fashioned her perfectly to the demands of this age, so that she might spread sunshine in each gloomy corner.

Frances is a good poetess, always contributing her part to the Blue Moon. Her dearest wish is to enter some commercial school. May your wish be granted!

GEORGE ADAMS PARKHURST

Graduation Honor
Senior Play '32
Blue Moon Staff '31, '32
Football Asst. Mgr. '29; Mgr. '30, '31

"PARK"
Latin Club '30, '31, '32
Pres. Radio Club '32,
Operetta '30



Who would have thought that George had such ability in dramatics and who ever suspected that he could "one, two, three, cavot, one two, three, swish, swish?" It is said that he wants to take up dancing and become a gigolo.

George has always been on the job in managing the football teams, and we wish to thank him for his great work in fixing up the field. In addition, George is a wizard in class, and we look forward with anticipation to the time when we may hear him speak at graduation.

May Lady Luck attend you while studying at M. I. T.

HAROLD CLINTON PERHAM

Baseball '31, '32
Vice President Stamp Club '32

"BALDY"
Senior Play '32
Radio Club '32



Extra, extra! latest news of Lowell, right this way!

In the early hours of the morning, "Baldy" may be seen "bedding" his bicycle and papers, at the same time, around the town. His only companion is his faithful dog who trots untiringly beside his master. Rain or shine, "Baldy" never fails to tuck the morning paper securely under the door step so the occupants of the house will not be obliged to run a half mile before ascribing the pages that they intend to peruse.

The pitcher's box of the baseball diamond is "Baldy's" place. He hurls a mean ball with in-shoots, out-shoots or what have you!

"Baldy" will travel north next year to study at Springfield College. When you're pitching for your Alma Mater be assured that we're all behind you.

MILDRED E. PETERSON

Inter-class Basketball '32
Soccer '32

"PETE"
Treas. Health Club '32
P. A. D. Club '32



"Five foot two, eyes of blue
Oh what those five feet can do!
Has anybody seen my gal?"

"Pete" has a knack of making friends with everyone. Perhaps this is explained by the fact that she is a blond, and girls as well as boys like blonds. One must also have a magnetic personality to gain the popularity of which "Pete" may boast.

We regret having to lose a good soccer player when "Pete" goes. When she kicked the ball, the rest of the players cleared the field, for they didn't want their shin-bones scraped.

Following in the footsteps of her sisters, Mildred will enter the Lowell General Hospital next year.



HARRIET EUGENIA FEVEY "HATTIE"
General Committee '30, '31 *Senior Play '32*
Soccer '32 *Glee Club '32*
Health Club '32 *Cheer Leader '32*

Oh, it can't be true, "Hattie", that you are going to don a white cap and gown and become a nurse,—you, the girl who is able to entertain so well with your guitar and charming voice? Think twice before you leap, because training would be hard on such a little lady as you.

Our little "Hattie" has captured beauty prizes, the lead in the Senior Plays and many other valuable things (including rings, pins, broken hearts, etc.) during her two years stay with us. At dances her feet play "Hide and Seek" with the floor and she has lured scented the unfragrant odor of that painful rose, the "wallflower".

At any rate, "Hattie", we wish you unlimited success and luck as a medicine gal for the sick.

LAURA E. PROCTOR
Mgr. Basketball '32 *Senior Play '32*
Health Club '32 *Glee Club '32*
Year Book Staff '31 *P. A. D. Club '32*

The bus might be full before going to a basketball game but it never started on its way until Laura came (usually a little tardy) to keep the girls' team straight. Between the halves, if any girl was discouraged or down-hearted it was always Laura who sent her back on the floor with a smile and a mind determined to win.

Although Laura's family moved from Chelmsford at the beginning of the school term, the ties that bound her to H. S. proved stronger than she realized, and she insisted on staying to finish her schooling with us.

We earnestly wish you every good fortune, "Mrs. Hattie Simmons".

HERMAN LOUIS PURCELL "Boors"
Inter-class Basketball '29, '32 *Stamp Club '32*
Baseball '32 *Senior Play Committee '32*

The great wide open spaces and an attractive farm seems to be the thing that interests "Boors" the most. The country needs more ambitious men like him to end the depression.

"Boors" helped his Senior inter-class basketball team on to victory this last season, and he had more time to spend on the other athletics, we know he would have been a star player in each one. It is a long, dreary walk to South every night—and who would feel inclined to hike it after a strenuous practice?

When you're settled on your farm, "Boors", we will patronize your products. O. K.?

WALDO RICHARDSON "RICHIE"
Football '29, '30, '31, '32 *A. A. Board, Vice-Pres. '32*
Basketball '30, '31, '32 *Latin Club '30, '31, '32*
Baseball '30, '31, Capt. '32 *Operetta '29*

A second Babe Ruth both in form and in knocking out "homers" is our own school-girl complexioned, Westland milkman, "Mike". A crushing "steam-roller" of the football gridiron and a true "flash" on the basketball court is our sport-king, Waldo. In other words, a three letter man of C. H. S.

As vice-president of the A. A. Board, he filled the position to a "tee", and as an aedile in the Latin Club, he showed us ancient Roman customs we never knew about.

The future for "Mike" cannot but be as broad and full as the present. May it be as weighty!



Handwritten notes:
 I can't be true, "Hattie", that you are going to don a white cap and gown and become a nurse,—you, the girl who is able to entertain so well with your guitar and charming voice? Think twice before you leap, because training would be hard on such a little lady as you.
 Our little "Hattie" has captured beauty prizes, the lead in the Senior Plays and many other valuable things (including rings, pins, broken hearts, etc.) during her two years stay with us. At dances her feet play "Hide and Seek" with the floor and she has lured scented the unfragrant odor of that painful rose, the "wallflower".
 At any rate, "Hattie", we wish you unlimited success and luck as a medicine gal for the sick.
 The bus might be full before going to a basketball game but it never started on its way until Laura came (usually a little tardy) to keep the girls' team straight. Between the halves, if any girl was discouraged or down-hearted it was always Laura who sent her back on the floor with a smile and a mind determined to win.
 Although Laura's family moved from Chelmsford at the beginning of the school term, the ties that bound her to H. S. proved stronger than she realized, and she insisted on staying to finish her schooling with us.
 We earnestly wish you every good fortune, "Mrs. Hattie Simmons".
 The great wide open spaces and an attractive farm seems to be the thing that interests "Boors" the most. The country needs more ambitious men like him to end the depression.
 "Boors" helped his Senior inter-class basketball team on to victory this last season, and he had more time to spend on the other athletics, we know he would have been a star player in each one. It is a long, dreary walk to South every night—and who would feel inclined to hike it after a strenuous practice?
 When you're settled on your farm, "Boors", we will patronize your products. O. K.?

Handwritten notes:
 As well, George's I wish I had caught again this year. I think that's a very interesting record. Mike, then, another 100 points. But I think we'll have to wait and see what happens in the future. (Signed) [unclear]



CHANDLER W. ROBINSON

Football '28, '29, '30, '31
Inter-class Basketball '30
Glee Club '29
Orchestra '29, '30, '31
Senior Prom Committee '32
Senior Reception '31

Many people, who go to church by radio, turn the dials when the morning offering is passed, but "Chan" changes stations when instructions for reducing exercises and slenderizing diets are broadcast. The real cause of this weighty matter lies in the fact that "Chan" has a sweet tooth, and candy bars are so tempting!

A caution which in North Chelmsford remain at a good distance from the machine marked "U. S. Mail" for "Chan" is the driver of the vehicle.
Now watch that diet, "Chan", because if you are going to work in your father's garage what a time you'll have getting out and under those new car models with the low-slung chassis!

REGINA RUTNER

Health Club '32
P. A. D. Club '32
"Who wouldn't be jealous of you?"
"Reggie" is the third member of the Boswell sister. She picks up the bass, and can't she do it! (What a sleigh ride she gives her tonsils when she reaches for those minor notes)

Dancing seems to be her chief hobby. Every noontime you can see "Hattie" and "Reggie" dancing in the corridor. It may be the rumba or it may be the four hundred, but regardless of the type of dance, there are new and catchy steps a-plenty when those two get together.

More thermometers and more pulses! "Reggie" is going to be a nurse. What senior boy was it who said he felt a heart-attack already? "Reggie" can administer heart balm to perfection!

WALLACE H. SCOBIE

Football '29, '32
Inter-class Basketball '29, '30, '31, '32
Baseball '31, '32
P. A. D. Club '32

Do you recall ever having seen the painting entitled "A Day's Catch"? It is the picture of a country boy. He wears a wide straw hat, a pair of variegated patched trousers, a blue shirt, and a red bandana handkerchief. The most notable thing in the picture, however, is an array of fish which he is holding up for approval. We wish to inquire whether or not "Skippy" posed for this painting in his boyhood days, for the red hair, innumerable freckles and joyous smile are the exact duplicate of his!

"Skippy" is a perfect athlete. He is our star pitcher, half-back, and interclass basketball player. Through his fine playing, the Senior team won the championship.

With your pleasing disposition, added to your numerous pranks and jokes, we know you'll be a great help to this "goose-eyed world" of ours!

MARY SHEEHAN

Captain Soccer '32
Basketball '32
Year Book Staff '31
Blue Moon Staff '32
Glee Club '30, '32
Vice President Health Club '32
Vice President Radio Club '32
Secretary P. A. D. Club '32
Secretary Stamp Club '32
Senior Play Committee '32

"Oh, yes, that is a marvelous bar, best I've ever tasted. You prefer this one? That's good too, in fact I always carry one around in my pocket. They're good for what ails you. By the way, what are your ailments? No sir, you can't go wrong on that buy. You give me a quarter and only want one bar. Say, what kind of a guy are you? Sorry, but I can't make the change. You'll have to take the two bars! Thank you!" Mary selling chocolate bars.

Massachusetts Agricultural College and Mary—they were just made for one another.



Handwritten notes in blue ink:
"Chan" is a great...
"Reggie" is...
"Skippy" is...
"Mary" is...
"Chan" is a great...
"Reggie" is...
"Skippy" is...
"Mary" is...



DELIA SMITH
Interclass Basketball '32
Soccer '32
Health Club '32

"SCHMIDT"
Stamp Club '32
P. A. D. Club '32
Senior Prom Committee

Delia and Mary remind one of Heaven, for there is no parting there. Wherever you see one, you're bound to see the other. The two made very good candy sellers and always returned the boxes, minus the bars but plus the money, to the office. (Even though depression was said to have hovered about the town, they always secured the desired five-cent pieces,—yes—*your* five cents and *my* five cents.)

The soccer team will lose a perfect player next year, for when Delia hit the ball, it was just good-bye to it. She could carry it down the field all by her "ones-ies" while her noble comrades fell by her side on the field of battle, exhausted!

Next year Delia will enter Lowell Normal School.

MARY SOUSA
Health Club '32

"DENNY"

There are stars in Heaven and there are stars in Hollywood, each with a brilliant glow,—but the stars that shine brightest within the four walls of our school are those that brighten up a class-room with rays of knowledge. "Denny" is classed as the above—especially in Shorthand. She has won many certificates in this subject—due to her exactness and swiftness.

Mistress Mary, not contrary, just very, very shy. Even though she is extremely quiet, her politeness and loyalty have won a way into our hearts,—never to be forgotten.

The revolving doors of life will lead Mary into the business world—that is to say—office work. With all your abilities we know you will make good.

JOSEPH P. STANEWICZ
Football '30, '31, '32, Capt. '32
Basketball '29, '30
Track '29
Baseball '30

"JOE"
Executive Committee '32
Vice-President, Class '31
Glee Club '30
P. A. D. Club

When the pigskin had to be carried around right end for a five yard gain, it was "Joe" who did it. However, Fate was very unkind at times, and often rewarded him with ugly gashes, scrapes and chipped teeth. Many times the bleachers rang out in chorus for Captain Stanewicz, and our quarterback *never* failed us.

"Joe" has that "cave man" appearance which the femmes just crave, but—blah!—women on the whole bore him.

In keeping with his mannish physique, "Joe" is going in training as a boxer. World renown in the ring, "Stan!"

DOROTHIE MAE STAPLES

"Dot"

Excitement, speed, and life are just what "Dot" craves. Things are always moving, stirring, never, never still when she is around. Instead of saying that great things come done up in small packages, we insist that the smaller the bundle the livelier the contents!

"Dot" might well be called our party-girl, for she adores clothes, jewelry, and the magic of the make-up box. She revels in entertaining (specialty-tap dances) and ballroom dancing.

Miss Staples' lung power is O.K.; we're assured of that fact by her boisterous yells while cheer-leading. When Hattie and she are together—horse and buggy—let's go—hip-hip!!—

Wounds and lacerations will be healed before you know it, when "Dottie" becomes a nurse.





Here's to a pal old back
Hid. Here's to you
next year
John



JOHN ELMER TRULL
Football '28
Glee Club '31

"JOHNNY"
Orchestra '29, '30, '31

Hotcha-cha-cha-vo-de-o-do, just hear that trumpet talk!

"Johnny's" musical ability cannot be equalled by anyone in C. H. S. In whatever orchestra he plays, the crowd is guaranteed to follow, for everyone enjoys his playing. Even if the people don't dance, they follow just the same, for it's a pleasure to watch him blow off excess steam.

Dancing ranks second on "Johnny's" score card. He's the lightest of dancers on his feet or on your feet. Ask any girl!

Textile School looks good to John. They say that he'd just love to play in a great big orchestra, too. One thing at a time; which will it be?

LEAH M. WALTON
Executive Committee '30
Basketball '32
Soccer '32
Senior Leader '32

"IKEY"
Glee Club '31
Health Club '32
Stamp Club '32

well - how
the play
John

A great big laugh, a clang of spike heels—gangway—here comes "Ikey".

Can she make 'em cheer at football games, can she get acquainted with dishing names at basketball games, can she (?) say she can! But could she get along without her partner "Pete", and could "Pete" possibly live without "Ikey"?—No Sir! In short, Leah adds life and excitement to every group she enters.

There'll be tears for souvenirs when she leaves, for who can duplicate her?

To be an efficient stenographer to some tired business man is her highest ambition.

ALBERT EARLE WHEELER
Football '30, '31
Basketball '30, '31
Orchestra '29, '30, '31

"AL"
Operetta '30
Glee Club '29, '30, '31, '32
Senior Reception Committee '31

High notes—low notes—blue notes—the boy with the "sax" appeal! It is "Al's" greatest desire to be a second Rudy Vallee, and truly it wouldn't be a hard thing for him to do, because he has the build, the hair, the crooning, plaintive voice and (besides a way with women) the power to make the saxophone speak.

As a general rule, musicians are inclined to be frail and finicky, but "Al" breaks the tradition. He has seen hard usage on the gridiron and he is capable of holding his own against the strongest opponent.

While tuning in on your radio in future years, be on the watch for the half-hour of dance music conducted by "Al" Wheeler and his Hotel Marvel Orchestra.

GEORGE MARSHALL WHITCOMB
Basketball '31, '32
Baseball '31, '32
Football '28, '29, '30, '31

"Bud"
Latin Club '30, '31, '32
A. A. Board '30
Track '30, '31

Best of luck
Boy - see you
later "Bud"

Most any night, "Bud" can be heard whistling a very popular air, accompanied by his partner Carl, while walking to his home in the Westlands. This tune has become very well known to the residents on Lowell road and many people have commented on it. (?)

Whitcomb has played on every team that the sport curriculum offers. Through his excellent work on the football team, he was nicknamed "The Immovable Center", and his fighting spirit in basketball and baseball are highly recommendable.

Teeth don't mean a thing to "Bud"! Easy come, easy go, easy to get more at the dentist's office.

Our last warning! Don't break training rules at Springfield College!



AGDA C. WICKANDER

Soccer '32 *Wickander* Health Club '32
Inter-class/Basketball '31, '32 Senior Play Committee '32

Wickander
Round but pleasing curves but proportioned! A
fine nose but striking features! "Wickie" possesses the
original brain that composed the Health Club Song, and
has written the witty poems that have appeared in the
Blue Moon so often.

Wickander
Athletics interested "Wickie" very much; we may
be sure of that since she played soccer and inter-class
basketball with remarkable skill.

Wickie
Miss "Wickie" is going in training at the Lowell
General Hospital next year. Won't she look stunning
doing the menial tasks of a probationer; but won't the
patients be lucky under her care! Don't rush, boys!

Class Ode

As through the gate we pass today
Into the world we'll make our way;
Yet to you we shall e'er be true,
Faithful, yes, faithful always to you.
You've fashioned us each song we sing,
Gladdened each heart with merry ring.
To you we owe each cherished thought;
Great happiness for us you've wrought.

Gone happy hours,
Now faded away;
Memories are ours
Of life's gayest days.
Farewell once more
To dear Chelmsford High.
We leave her friendly doors;
We bid "Good-bye".

M. A. K.



Undergraduates

All too short and fleeting is our life at High School. All too soon must we separate from the playmates among whom we lived and laughed. Should adversity befall us, how beautiful it will be to pause at times and glance back upon the glamorous days of our youth—upon the familiar faces of friends known to us all in the now-vanishing past.





Undergraduates



Junior Class of 1933

Abrahamson, Frederick
Adams, Emily
Annis, Thelma
Archibald, Margaret
Bachelder, Barbara
Baxendale, Sylvia
Belida, Peter
Bezanson, William
Birtwell, Mabelle
Boumil, Andrew
Bray, Dorothy
Buckley, Warren
Burndrett, Helen
Byam, Rodney
Champagne, Andrew
Clark, Eva
Clark, Francis
Clarke, Matthew
Conlin, Angela
Cote, Charles
Crawford, Grace
Cunningham, Phyllis
Dirubbo, Joseph
Dixon, Anna
Dutton, George
Foye, Eileene A.
Hazeltine, Eleanor
Hehir, Edmund
Hemenway, Sally
Hill Ruby
Hill, Ruth
Gallagher, Edna
Hoar, Marguerite
Jesus, Eva

Jones, Grace
Kent, Charlene
Kinch, Cedric
Kisiolek, Joseph
Koulas, Julia
Krol, Walter
Lantagne, Edward.
Loiselle, Florence
Marinel, June
Marshall, Marjorie
Matuck, Edward
McCarthy, Beatrice
McGovern, Rita
Mikulis, Bennie
Miskell, Nora
Morrill, Thelma
Murphy, Margaret
Oczkowski, Stanley
Pardoe, George
Reedy, Edward
Safford, Esther
Sargent, Edith
Secor, Raymond
Shugrue, Marjorie
Stanewicz, Jennie
Stephens, Marjorie
Stirk, Arline
Taylor, Grace
Theriault, John
Warner, Adolph
Williams, Lillian
Wilson, Hope
Winters, Isabelle



Junior Class

President EDWARD MATUCK
Vice-President FRANCIS CLARK
Secretary ARLINE STIRK
Treasurer JENNIE STANEWICZ

General Committee

WARREN BUCKLEY
THELMA ANNIS
CHARLES COTE
WARREN FREEMAN
MARJORIE MARSHALL

EDMUND HEHIR
MARGUERITE HOAR
HOPE WILSON
HELEN BURNDRETT
GEORGE DUTTON

BENNIE MIKULUS

For their first two years in C. H. S., the Class of '33 was of a somewhat retiring nature, but this year it has shown the other classes just what ability lay under such a quiet surface.

The Booster Day appearance of the Juniors in red caps and bows so caught the judges' eyes that they carried off the much-desired and appreciated prize offered by the Chelmsford Ginger Ale Company.

There was the minstrel show, songs, specialties, and quick-witted endmen, and dancing to the dulcet strains of our new radio—incidentally, the party helped pay for that same radio.

And the Year Book—chalk that up to the credit of the Juniors, as well as the exceptionally interesting final issue of the *Blue Moon*. The proud possessors of those new-style class rings, which appeared in April, have undoubtedly proved their versatility.



Sophomore Class of 1934

Abbott, Marjorie
Andrew, Albert
Angus, Mary
Barker, Eva
Beckvold, Evelyn
Belida, Walter
Berubee, Phyllis
Boyd, Ronald
Brotz, Helen
Burdick, Priscilla
Burton, Frank
Butters, Dorothy
Calder, Roger
Capone, Phyllis
Cassidy, John
Christoun, Margaret
Clark, David
Clement, Kenneth
Clough, Blanche
DeAmicis, Mary
Deputat, Blanche
Dixon, George
Doyle, Paul
Durgin, Arthur
Ducharme, Raymond
Fagan, James
Ferron, Myrtle
Fitzpatrick, Louise
Flemings, Evelyn
Fletcher, Allen
Freeman, Edward
Gallagher, John
Gauthier, Emile
Haire, Weldon
Hannaford, Marguerite
Hansen, Raymond
Hayden, Evelyn
Hedlund, Albert
Hill, Millicent

Hines, Rita
Hines, Virginia
House, Ralph
Howard, Hersey
Janulis, Ernest
Johnson, Stanwood
Judge, Laurence
Leedberg, George
Loiselle, Henry
Lundstrom, Ellen
MacNeill, Helen
Mann, Veronica
McEnaney, Roland
McSheehy, Alfred
Mercier, Beatrice
Mercier, Lydia
Mikulis, Julia
Mills, Bernice
Miskell, Mary
Molloy, Claire
Murphy, Dorothy
Niemaszyk, Catherine
Olsson, Barbara
Page, Herbert
Parks, Dorothy
Peterson, Halvar
Pevey, Eelen
Plein, Marion
Purcell, Mildred
Putnam, Barbara
Scobie, Mary
Sears, Ina
Simpson, Adaline
Simpson, Hazel
Slade, Marjorie
Stearns, Louis
Stephens, Helen
Todd, Monica
Valentine, Napoleon



Sophomore Class

President, EMILE GAUTHIER
Vice-President, GEORGE DIXON
Secretary, MYRTLE FERRON
Treasurer, MARY MISKELL

Executive Committee

EVELYN BECKVOLD
RONALD BOYD

ALLEN FLETCHER
HELEN PEVEY

LOUIS STEARNS

In this play entitled "Education", in which we all take part, the Sophomores have just completed the second act. It has been a dramatic production, with such a delightful ending that the participants eagerly await the opening of act three.

President Emile Gauthier was a conscientious and scrupulous director. His assistant, vice-president George Dixon, was always on the job. Myrtle Ferron and Mary Miskell, secretary and treasurer respectively, kept the books straight and handled the proceeds that the cast of said act two realized during the year. With a group of vigorous and spirited players, such as the executive committee, the applauses of the audience have been frequent.

The Coaches of the act, the faculty advisers, Miss Monahan and Miss McCarthy, receive bouquets of congratulations for their faithful work.



Sophomore Class of 1934

Abbott, Marjorie	Hines, Rita
Andrew, Albert	Hines, Virginia
Angus, Mary	House, Ralph
Barker, Eva	Howard, Hersey
Beckvold, Evelyn	Janulis, Ernest
Belida, Walter	Johnson, Stanwood
Berubee, Phyllis	Judge, Laurence
Boyd, Ronald	Leedberg, George
Brotz, Helen	Loiselle, Henry
Burdick, Priscilla	Lundstrom, Ellen
Burton, Frank	MacNeill, Helen
Butters, Dorothy	Mann, Veronica
Calder, Roger	McEnaney, Roland
Capone, Phyllis	McSheehy, Alfred
Cassidy, John	Mercier, Beatrice
Christoun, Margaret	Mercier, Lydia
Clark, David	Mikulis, Julia
Clement, Kenneth	Mills, Bernice
Clough, Blanche	Miskell, Mary
DeAmicis, Mary	Molloy, Claire
Deputat, Blanche	Murphy, Dorothy
Dixon, George	Niemaszuk, Catherine
Doyle, Paul	Olsson, Barbara
Durgin, Arthur	Page, Herbert
Ducharme, Raymond	Parks, Dorothy
Fagan, James	Peterson, Halvar
Ferron, Myrtle	Pevey, Helen
Fitzpatrick, Louise	Plein, Marion
Flemings, Evelyn	Purcell, Mildred
Fletcher, Allen	Putnam, Barbara
Freeman, Edward	Scobie, Mary
Gallagher, John	Sears, Ina
Gauthier, Emile	Simpson, Adaline
Haire, Weldon	Simpson, Hazel
Hannaford, Marguerite	Slade, Marjorie
Hansen, Raymond	Stearns, Louis
Hayden, Evelyn	Stephens, Helen
Hedlund, Albert	Todd, Monica
Hill, Millicent	Valentine, Napoleon



Sophomore Class

President, EMILE GAUTHIER
Vice-President, GEORGE DIXON
Secretary, MYRTLE FERRON
Treasurer, MARY MISKELL

Executive Committee

EVELYN BECKVOLD
RONALD BOYD

ALLEN FLETCHER
HELEN PEVEY

LOUIS STEARNS

In this play entitled "Education", in which we all take part, the Sophomores have just completed the second act. It has been a dramatic production, with such a delightful ending that the participants eagerly await the opening of act three.

President Emile Gauthier was a conscientious and scrupulous director. His assistant, vice-president George Dixon, was always on the job. Myrtle Ferron and Mary Miskell, secretary and treasurer respectively, kept the books straight and handled the proceeds that the cast of said act two realized during the year. With a group of vigorous and spirited players, such as the executive committee, the applause of the audience have been frequent.

The Coaches of the act, the faculty advisers, Miss Monahan and Miss McCarthy, receive bouquets of congratulations for their faithful work.



Freshman Class of 1935

Annis, Barbara
Ayotte, Raymond
Belida, Claudia
Bell, Evelyn
Bennett, Louis
Bickford, Glendys
Bliss, Raymond
Bloomgren, Arthur
Bloomgren, Thure
Booth, Helen
Borodawka, Jennie
Borrows, Celeste
Bowers, Sylvia
Brennan, Madeline
Brown, Janice
Burns, Harlan
Calder, Donald
Capuano, Ralph
Cassidy, David
Clark, Romey
Coburn, Alfred
Dearborn, Alton
De Long, William
Devine, Mary
Dirubbo, Nicholas
Donaldson, Charles
Donaldson, Robert
Drake, Adeline
Ducharme, Beatrice
Duffy, Margaret
Dutton, Robert
Ferron, Rita
Finch, Ralph
Finnegan, Paul
Fish, Louise
Foye, Emma
Fuller, Harvey
Gauthier, Gladys
Goodwin, Everett
Haithwaite, George
Hamilton, Isabelle
Hannaford, Frank
Harvey, Muriel
Hazeltine, William
Hindman, Harold
Holt, Marshall
Hoelzel, Norman
Hulslander, Donald
Jamros, Lulack
Johnson, Roland
Jones, George
Kennedy, Gertrude
Kennedy, Joseph
Kirk, Ellen

Krasnecky, Fanny
Lane, Helen
Lantagne, Margaret
Lebedzinski, Carl
Leman, Louise
Linstad, Russell
Lewis, Edith
Loiselle, Irene
Lovering, Marjorie
MacLaughlin, Leona
MacLean, Donald
Marinel, Joyce
Marinel, Thelma
McAulay, Archie
McEnaney, Mona
McMahon, Esther
McQuade, Helen
Mills, William
Mores, Harland
Mungovan, Joseph
Murphy, Rita
Nath, Barbara
Nelson, Louise
O'Neil, William
Pardoe, Ruth
Pearson, Roy
Pelton, Ruth
Peterson, Eric
Petterson, Harold
Pierro, Rockeen
Potter, James
Rafferty, Donald
Robinson, James
Rondeau, Henry
Russell, Doris
Sargent, Herbert
Savage, Eleanor
Savage, Katherine
Simard, Estelle
Smith, William
St. Onge, Laura
Stearns, Genevieve
Sullivan, Pauline
Teachout, Doris
Thomas, Pearl
Tompkin, Mary
Tousignant, Leo
Trask, Eleanor
Wallis, Gwendolyn
Welch, Phyllis
Winters, Margaret
Wright, Stanley
Zaberick, Thaddus



Freshman Class

President
Vice-President
Secretary
Treasurer

LOUIS BENNETT
HELEN MCQUADE
JOSEPH KENNEDY
JAMES ROBINSON

General Committee

EDITH LEWIS
JOYCE MARINEL

THELMA MARINEL
ROMEY CLARK

HAROLD PETTERSON

Who said the Freshmen weren't important? The class of '35 has been very much in evidence this year. Whether the success of the class has not been in a great part due to the ability of its adviser, Miss Libby, is another question to be considered; but the Freshmen certainly made everyone realize their presence. There was the party on April first—we let the date pass without comment—a very ambitious and successful performance, reflecting great credit on Miss Libby and Mr. Wilson. No other Freshman Class has ever attempted such an affair, and we feel quite awed at the initiative and talent displayed by the "infants". We've enjoyed knowing you this year, Freshmen; we're glad you're going to be with us a while longer.



Athletics

In our dreams of the past we loiter long before the gentlemen with the silver buckles, the white silk stockings, the velvet suits, and the powdered wigs;—before the retiring lady with hooped skirts, the dainty hands, and the scented fans. Not always were they so attired, so polished, and so stately. Regardless of age and era, social standing and wealth, exercise has always been an essential requisite to human life. The dashing stallions with gorgeous trappings upon whose back “madame” rode side-saddle with grace and ease, the muscular gentlemen who threw his weaker opponent upon the mat, the gloved hand that steadied the swiftest bow and arrow and directed it to the bull’s eye, and the glamorous hunts for duck and deer, all had their time and place in the early years of our country’s growth.

Were they to return to America today there is no doubt that one of the changes which would attract their attention would be found in the field of athletics. Organized games have swept the country and have become a definite part of the school life of the American boy and girl.

We represent a group of average high school boys and girls, but we feel that we have fared above average in the training of sportsmanship which we have received. We hope that we may be able to exemplify the true spirit of the life in which we have been trained and thus play the game of life,—as Theodore Roosevelt once remarked, “Hit the line hard, but play the game square”.

Acknowledgment

The members of the Chelmsford High School wish to express their appreciation to the local Lions Club for the bleachers which were erected on the athletic field this year. The gift was most welcome and appropriate, and has added greatly to the enjoyment of our sports. It is a feeling of pride and satisfaction for us, as pupils of Chelmsford High School, to know that we have the support of such a representative organization as the Lions Club. We sincerely hope that we may be able to repay them in the future and that we may prove worthy of their generous consideration.





Athletics



Athletic Association Board

President, WALTER JOHNSON
First Vice-President, WALDO RICHARDSON
Second Vice-President, GENEVIEVE DEAN
Secretary, MARIANNA HEMENWAY
Treasurer, CHARLES NICHOLS
Senior Member, JERRY DEAN
Junior Member, HOPE WILSON
Sophomore Member, BLANCHE CLOUGH
Member at Large, RAYMOND BUCHANAN
FACULTY ADVISERS

MILDRED LIBBY MILDRED WELLS GEORGE KNIGHTLY MORRIS BUDNICK

The executive affairs of our High School Athletic Association are managed by the A. A. Board. The group is composed of officers, representatives of each class, and the faculty coaches.

This year, in addition to the regular duties, the board was instrumental in establishing our annual "Booster Day". This was held on November 20 and proved to be a banner day for our school.

At the Annual Banquet held in the Chelmsford Town Hall on June 4 the letters and certificates earned, by the members of the various teams were awarded by the coaches. The women who so generously gave their time and ability in managing the banquet have our sincere thanks.



Football

The football season began early in October. We felt proud that we could offer our boys the excellent equipment which our Athletic Association was able to afford. We are fortunate in the appearance, training, and sportsmanship of this group.

Joseph Stanewicz, captain, strove to lead the team to success. George Parkhurst, manager, proved that he certainly merited the position. Color and assistance were given by Donald Rafferty and John Gallagher.

To Mr. Knightly and Mr. Budnick credit should be extended in its fullest measure. We realize and appreciate our good fortune in having them to direct our athletics.

Schedule:

Chelmsford	0	Danvers	32	Chelmsford	6	Acton	12
"	12	Billerica	0	"	0	Shrewsbury	12
"	0	Concord	28	"	0	North Andover	27
"	0	Manchester	6	"	0	Somerset	12
"	27	Pepperell	0				

At the Athletic Banquet in June, the following awards were made:
Letters: Rodney Byam, Andrew Champagne, Francis Clark, Edward Freeman, Walter Johnson, Frank Morrell, Wallace Scobie, Raymond Secor;
Certificates: Jerry Dean, John Kinch, George Parkhurst, Mgr., Waldo Richardson, Joseph Stanewicz, Capt., George Whitcomb.



Girls' Basketball

The girls' basketball squad completed a very successful season. The girls started a bit handicapped, as the year of '31 had graduated several letter players and left a sole letter owner for the foundation of the team. However, we were proud of them, not only for the athletic ability which they displayed, but for the excellent manner in which they conducted themselves.

Hope Wilson, the only letter player, was elected captain. She constantly exhibited her exceptional ability in the game, as well as her unusual spirit of leadership. Laura Proctor, the manager, served the team faithfully and efficiently and Margaret Foye, gave her assistance.

Miss Libby and Miss Wells are to be congratulated for the results of their untiring work as coaches. The entire school appreciates the interest, cooperation, and ability which they have manifested. Schedule:

Chelmsford 34	Alumni 31	Chelmsford 31	Groton 20
" 32	Townsend 25	" 25	North Andover 34
" 17	Littleton 34	" 49	Billerica 16
" 50	Groton 25	" 14	Littleton 14
" 31	North Andover 16	" 31	Westford 14
" 24	Westford 24	" 33	Alumni 10
" 44	Billerica 25		

At the Athletic Banquet held in June the following awards were made:
Letters: Ruth Bridgeford, Helen Christoun, Blanch Clough, Eleanor Hazel-tine, Marianna Hemenway, Helen MacNeill, Laura Proctor, Mgr.
Certificate: Hope Wilson.



Boys' Basketball

The arrival of the basketball season was heartily heralded. The team entered the Lowell Suburban League, which included Johnson High School of North Andover, and the High Schools of Littleton and Billerica. Jerry Dean captained the team, contributing his usual spirit of good sportsmanship and his superior athletic ability. John Kinch, manager, demonstrated his executive talent at all times.

The success of the season can be attributed to the competent coaching of Mr. Knightly and Mr. Budnick.

SCHEDULE

Chelmsford 26	Alumni 22	Chelmsford 13	North Andover 19
" 21	Townsend 23	" 32	Billerica 14
" 16	Littleton 18	" 26	Littleton 25
" 17	Groton 25	" 42	Ayer 12
" 18	North Andover 47	" 15	Westford 24
" 40	Woodbury 16	" 39	Woodbury 14
" 35	Ayer 11	" 38	Faculty 11
" 30	Westford 19	" 31	Littleton 25
" 36	Billerica 5	" 22	Murdoch 44
" 14	Groton 40	" 18	Alumni 10

At the Athletic Banquet held in June the following awards were made: Letters—Edward Freeman, Thomas McEnaney, Alfred McSheehy, George Whitcomb; Certificates—Jerry Dean, Capt., John Dixon, John Kinch, Mgr., Walter Johnson, Waldo Richardson.



Girls' Soccer

CAPTAINS

Senior—MARY SHEEHAN

Junior—MARJORIE STEPHENS

Sophomore—BLANCH CLOUGH

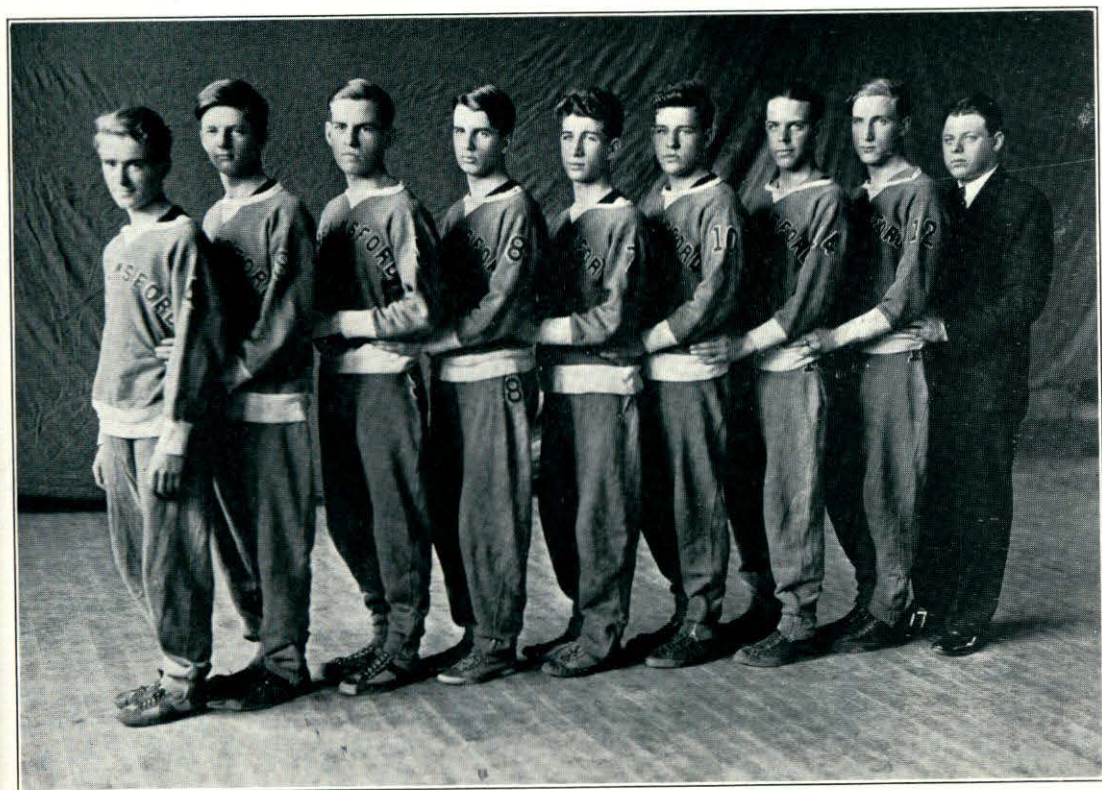
Freshman—EMMA FOYE

"Kick it! Come on, team! Atta girl!" And there's a rush down the field—someone carrying the ball along—from the other side a dashing rush—she has lost it! Back the other way! A long kick—

The fall of 1931 saw, for the first time in the history of Chelmsford High School, soccer recognized as a sport. The call for players, issued by Miss Libby and Miss Wells, was answered by a substantial number of girls from each class. Each team chose a captain, and a tournament was played.

In spite of the fact that the Seniors were handicapped by the injury of their Captain in the first game they played, they came out victorious.

At the Athletic Banquet held in June, the following awards were made: Numerals—Ruth Bridgeford, Elizabeth Chalmers, Marianna Hem-enway, Vera MacLean, Mildred Peterson, Harriet Pevey, Mary Sheehan, Capt., Delia Smith, Dorothy Staples, Leah Walton, Agda Wikander.



Boys' Track

RODNEY BYAM

FRANCIS CLARK

ROMEY CLARK

JERRY DEAN

RAYMOND DUCHARME

GEORGE DUTTON

EDWARD FREEMAN

RAYMOND HANSEN

THOMAS MCENANEY

CARL OLSSON

Speed! That's our boys, when it comes to track.

At the meet held in the Lowell High School Annex on March 12, under the auspices of William McCarthy, editor of the *Chelmsford Times*, Chelmsford's track men participated in an exhibition relay race. Four boys chosen from the Senior and Freshman classes competed with four others from the Junior and Sophomore classes, the former group winning the race.

The track team did not take part in any interscholastic meets during the last season, so there will be no letters distributed.

Training was under the supervision of Coach Knightly.

*Here to hoping plenty
of luck in your future
career of Baseball
Walter J. Dick*



Baseball

Practice for baseball started early in April. An enthusiastic and energetic number of recruits presented themselves to Mr. Knightly and Mr. Budnick for the much needed training and coaching.

Four victories were chalked up for the first games of the season, and although balanced by four losses at present, we have hopes for a successful finale.

Waldo Richardson, a letter man, was elected captain. John Dixon was chosen manager for the season.

Once more the boys are benefiting by the proficiency of their coaches, Mr. Knightly and Mr. Budnick.

SCHEDULE

Apr. 14	Chelmsford	4	Townsend	0	May 23	Chelmsford	Ayer
26	"	7	Townsend	4	27	"	Wilmington
29	"	9	Methuen	4	June 1	"	Billerica
May 4	"	14	Wilmington	0	3	"	Ashland
6	"	7	Billerica	10	6	"	Groton
9	"	7	Groton	9	8	"	Methuen
10	"	6	Ayer	9	10	"	No. Andover
13	"	7	Ashland	9	16	"	No. Andover

At the Athletic Banquet held in June, the following awards were made: Letters—Rodney Byam, Kenneth Clement, Thomas McEnaney. Certificates—Francis Clark, Jerry Dean, John Dixon, Walter Johnson, Carl Olsson, Harold Perham, Waldo Richardson, Wallace Scobie, George Whitcomb.





Organizations and Activities



Blue Moon

Editor-in-Chief, CHARLES NICHOLS
Assistant Editor, MADELINE JENSEN
Art Editor, MARJORIE MARSHALL
Sport Editor, MARIANNA HEMENWAY
Business Manager, JOHN KINCH

Exchange Editor, WARREN BUCKLEY
Social Editor, HOPE WILSON
Humor Editor, MARY SHEEHAN
Class Reporter, GEORGE PARKHURST
Club Reporter, HOPE WILSON

FACULTY ADVISERS

Printing, MISS DUNIGAN

English, MISS MACBRAYNE

Our school paper has passed the fifth year of its history. We feel that it is quite an exceptional publication for a school of our size. By cooperation between the staff and the Office Practice class this paper is written, printed, and published entirely by the members of our student body. Its literary value, originality in art, and general appearance reflect the ability and industriousness of those who strive to make it successful.

Miss Dunigan, as the business director, and Miss MacBrayne, as the literary adviser, may certainly feel that their work with the board has been sincerely appreciated. The whole school joins in thanking them for their efforts and guidance.



Bank Trustees

President—ADELHEID ELLIOTT
Treasurer—LILLIAN DUPRAS
Senior Tellers
GEORGIA DAVIS
RUTH STURTEVANT

Junior Tellers
ANGELA CONLIN
MARGUERITE HOAR
NORA MISKELL
ARLINE STIRK

The aim of the Chelmsford High School Savings System, which is affiliated with the Lowell Institution for Savings, is to establish the habit of regular saving among the students. This is a very worthwhile habit and, once acquired, is often kept throughout a lifetime.

The outstanding feature of our Savings System is that one can make deposits of small amounts; five cents or any multiple of five cents. This is very convenient and induces many students to take advantage of the opportunity by depositing a small sum each week.

A new banking system was adopted this year. Under the new system, a Bank Trustee receives deposits in each homeroom from eight to eight-thirty every Thursday. The pupils arriving on the late busses are given the opportunity to deposit in Room two during O period.

Adelheid Elliott, president of the bank, and Lillian Dupras, treasurer, deserve much of the credit for the accuracy and neatness of the banking records.

Miss McCarthy's services are indispensable and the Bank Trustees would find it difficult to get along without her efficient and business-like management.



The Girls' Glee Club

SYLVIA BAXENDALE
HELEN BURNDRETT
ENID CLEMENT
GEORGIA DAVIS
ANNA DIXON
DOROTHY DUNHAM
MARGUERITE HOAR
ELLENETTE KIRK

MARTHA KIRK
FANNY KRASNECKY
VERONICA MANN
HELEN MACNEILL
HELEN MCQUADE
RUTH PELTON
HARRIET PEVEY
LAURA PROCTOR

BARBARA PUTNAM
MARY SHEEHAN
ESTHER STAVELEY
HELEN STEPHENS
MARJORIE STEPHENS
EVA THOMAS
MONICA TODD
MARGARET WINTERS

MARJORIE MARSHALL—*Pianist*

CHARLOTTE HYDE—*Faculty Adviser*

There's music in the air when the Girls' Glee Club gets together. This organization includes some of the best musical talent in school. That was proved beyond a doubt by the work of many of these girls in the operetta. Both in major and chorus parts, they did a great deal to make that production a success. Soon the group will be appearing at graduation; we look forward to hearing them.



Orchestra

FREDERIC MILLS—*Trumpet*

HAROLD HINDMAN—*Saxophone*

HAROLD PETTERSON—*Trumpet*

NAPOLEON VALENTINE—*Violin*

STANLEY WRIGHT—*Trumpet*

MARJORIE MARSHALL—*Piano*

MATTHEW CLARKE—*Saxophone*

RUTH STURTEVANT—*Piano*

CHARLOTTE HYDE—*Faculty Director*

The orchestra this year, composed of a group of talented and industrious pupils, has held rehearsals in Room 10 on Wednesday afternoons under the supervision of Miss Hyde.

The orchestra has confined its study to music of a classical nature. Its public appearances occasioned much favorable comment, both from the pupils and townspeople.

This is the first year that scholastic credit has been allowed to members of our orchestra. We feel that interest in music in this school is increasing and predict a prosperous future for the Chelmsford High School Orchestra.



Radio Club

President

GEORGE PARKHURST

Vice-President

MARY SHEEHAN

Secretary and Treasurer

RAYMOND JOHNSON

Members:

JOHN CASSIDY

ELLEN LUNDSTROM

ROY PEARSON

PAUL CORNWALL

ARCHIE MCAULAY

HAROLD PERHAM

ROBERT DUTTON

CHARLES NICHOLS

MARY SHEEHAN

ERNEST JANULIS

STANLEY OCZKOWSKI

LEWIS STEARNS

RAYMOND JOHNSON

GEORGE PARKHURST

ADOLPH WARNER

A new venture this year, the Radio Club, under the supervision of Mr. Wilson, has aroused considerable interest among the students of the school. A definite program has been followed in the study of radio science as carried on by the club, and this decidedly worthwhile and valuable project bids fair to assume its proper place in the educational life of the school. Various publications on radio have also been introduced to the school library by the organization, thus extending the influence of the club even beyond the circle of its own members.



Health Club

President, MARY SHEEHAN
Vice-President, RITA MCTEAGUE

Secretary, MADELINE JENSON
Treasurer, MILDRED PETERSON

MRS. LEWIS—Faculty Adviser

The Health Club is made up of Senior girls under the capable supervision of Mrs. Mae Lewis, who strives to make the club most worthwhile. The aim of the club is to teach the girls how to live strong, healthy lives, and to promote better health conditions wherever they may be. Mrs. Lewis has given many interesting talks to the girls, and it is partly due to her encouragement that the Health Club work has induced many of our Seniors to enter the nursing profession.

It is said that, "All work and no play makes the day rather dreary". Profiting by this slogan, the members of this club have enjoyed a number of social activities. The first was a visit to the Tewksbury Hospital which proved to be most interesting and instructive. Keith's Theatre also was the scene of one of the expeditions of this happy group. On March 17, the club sponsored a St. Patrick's Party which proved to be one of the most successful social events.

The year's work has been marked with earnest endeavor, enthusiasm, and interest. It is the ardent wish of the members that the girls of next years' class will continue the club's work under the able guidance of Mrs. Lewis.



The Latin Club--Romani Hodierni

<i>Consuls</i>	EVA JOHNSON	<i>Aediles</i>	EVELYN FLEMINGS
"	CHARLES NICHOLS	"	EMILE GAUTHIER
<i>Quaestor</i>	MARJORIE MARSHALL	"	WALDO RICHARDSON
		"	RAYMOND SECOR

Faculty Adviser, F. CHRISTINE BOOTH

Shades of our departed ancestors! Can all this noise issuing from the portals of Room 1 be caused by the students of a language long considered dead and buried? We hasten to investigate and find these "Romans of Today" racing to the board in relays to add up columns of "tres," "decem," "duodeviginti," "et cetera" and, surprising to say, finding it loads of fun. Yes, the members of our Latin Club are a lively modern crowd, playing games, singing songs and rounds, making an account of a baseball story out of names of gods and goddesses, and then, not satisfied with attending their own school for five days in each week, entering into another school—"A Roman School"—a play presented for the entertainment of their fellow members and underclassmen.

So now that we have taken a peek into the meetings of our classical friends, we will leave them with their "Vales" resounding in our ears. Yet, let us not forget the noblest Roman of them all—Miss Booth. For five years she has been our able teacher, resourceful leader, and loyal friend. We all feel grateful to her for the careful guidance, the cooperative attitude, and the ever-ready advice which she has given us.





Problems of American Democracy Club

OFFICERS

President, RAYMOND VENNARD

Vice-President, PAUL CORNWALL

Secretary, MARY SHEEHAN

Treasurer, RUTH BRIDGEFORD

A second new club was formed this year under the supervision of our principal, Mr. Burns, who teaches the Problems of American Democracy class.

The aims of the subject may be divided into three groups. The first is to give to the pupil a knowledge of the machinery of the government, at the same time presenting to him both sides of the most widely discussed questions in each field. The second is to give to the pupil broadened sympathies, and to develop a feeling of personal responsibility to help make the world a better place to live in for those less fortunate than himself. The third is to familiarize the pupil with the economic laws which underlie most of the problems of the day.

Due to the interest and enthusiasm of the students in the course, a club was formed wherein the pupils could put into practice the knowledge they had acquired. The club has taken an active part in the care of the building and has also taken charge of several assemblies, which were both educational and entertaining.



"The Whole Town's Talking"



Senior Play

<i>Mrs. Simmons</i>	Laura Proctor
<i>Annie</i>	Martha Kirk
<i>Taxi Driver</i>	Harold Perham
<i>Mr. Harry Simmons</i>	George Parkhurst
<i>Ethel Simmons</i>	Harriet Pevey
<i>Roger Shields</i>	Raymond Johnson
<i>Chester Binney</i>	Raymond Vennard
<i>Sally Otis</i>	Elizabeth Chalmers
<i>Lila Wilson</i>	Lucille McEnaney
<i>Mrs. Jackson</i>	Marjorie Armstrong
<i>Girls</i>	Edna Dexter, Genieve Dean
<i>Donald Swift</i>	Walter Johnson
<i>Letty Lythe</i>	Dorothy Dunham
<i>Sadie Bloom</i>	Rita McTeague

A decisive victory has been won! Let us erect a triumphal arch under which that fictitious character, "Mr. Simmons", may pass. Let us place upon the heads of "Mrs. Simmons" and "Chester Binney" olive wreaths as a sign of praise and victory. Let us award medals to "Ethel Simmons", "Roger Shields", "Annie", "Donald Swift", and "Letty Lythe" upon which are inscribed the words: "cum laude".

"The Whole Town's Talking" about the exceptional talent exhibited by members of the Senior Class who participated in the annual Senior Play of the above name, given March 10 at the Center Town Hall, and March 11 at the North Chelmsford Town Hall.

Raymond Vennard as "Chester Binney", the rejuvenated bachelor, extracted gales of laughter from the audience. The family trio consisting of mother, dad, and daughter, (Laura Proctor, George Parkhurst, and Harriet Pevey respectively) portrayed the perfect harmony (?) that exists in modern families concerning the delicate subject of love! The big shot from Chicago and *Paris* (Raymond Johnson) muttered French phrases that any Freshman would envy! Charming "Letty Lythe" (Dorothy Dunham), jealous "Donald Swift" (Walter Johnson), saucy "Sadie Bloom" (Rita McTeague), lisping "Lila Wilson" (Lucille McEnaney), gossipy "Sally Otis" (Elizabeth Chalmers), irresistible "Annie" (Martha Kirk), the "Taxi Driver" (Harold Perham), "Mrs. Jackson" (Marjorie Armstrong), and "Ethel's" girl friends (Edna Dexter and Genieve Dean) each carried away honors that can be obtained only by patient rehearsing and excellent supervision.

Let us say a word about the silent members of this play, persons to whom its success is accredited. Will Miss Booth and Miss Walter kindly come forward to receive the student body's words of praise for producing so enjoyable and entertaining a farce?



School Activities

Senior Hallowe'en Party

Ghosts and goblins—hanging from the lights, creeping along the walls, slipping out from behind curtains! Haunted houses, blood-curdling shrieks, shutters that bang at night! The Senior Hallowe'en Party at the Town Hall on October 29 featured thrills enough for anyone. The play, "Ghost Hunters", alone was worth attendance,—all about foolish young people who venture into a haunted house at midnight. How their shadows waved in the light of that one lantern! And then when the ghost came—and *what* a ghost!

After the play, there was dancing to the music of the radio. Refreshments followed, and very appropriate they were, too,—cider and doughnuts.

This first party of the season certainly gave the Freshmen an opportunity to see just what good times are enjoyed at our school socials.

Junior Minstrel Show

"Yassuh, Mista' Interlocutor, Ah sho feels great."

The Juniors put on a real old time minstrel show, with plenty of pep, on November 20. Did you recognize Warren Buckley, Edmund Hehir, Edward Matuck, and Raymond Secor as those ebony-skinned endmen, skillfully bandying jokes with Adolph Warner, the interlocutor? And the chorus of forty voices—they certainly set feet to tapping when they swung into the melodies. There were attractive song and dance specialties by Helen Burndrett, Phyllis Cunningham, Eleanor Hazeltine, Marguerite Hoar, Marjorie Stephens, Grace Taylor, Hope Wilson, and Isabelle Winters. A special feature of the program was "Jolly Juniors", sung by the chorus. This catchy song was written especially for the performance by Angela Conlin and Helen Burndrett.

Before the rise of the curtain upon the minstrel show proper, several very pleasing violin selections were offered by Adam Locapo, accompanied by Marjorie Marshall. An amusing sketch, "Wanted, a Cook", was presented by a cosmopolitan cast including Anna Dixon, Edna Gallagher, June Marinel, Rita McGovern, Nora Miskell, Marjorie Shugrue, and Arline Stirk.

Dancing and refreshments made the party a complete success.

Junior Frolic

Snow and red holly, Christmas bells and the Junior Frolic; they always appear together. This year's Juniors entertained the student body on December 17 at the Town Hall. Didn't the stage look well, with its brightly-decorated tree, and the rows on rows of red stockings stretched from its branches in all directions?

The Christmas program was very well done. It consisted of a sketch, "Christmas Memories", in which Marguerite Hoar, Helen Burndrett, and Edward Matuck appeared in an atmosphere of red and green packages, cheerful and reminiscent holiday plans, and the old favorites among the Christmas hymns which everyone loves. In addition there was an entertaining act, "A Couple of Lunatics," ably portrayed by June Marinel and William Bezanson.



But listen—sleigh bells, and the sharp clatter of hoofs! From nowhere at all arrives Santa himself, on an advance trip from his North Pole home, especially for Chelmsford High. Some thought his voice and manner strangely similar to those of a certain teacher of Math and Biology, but of course that must have been imagination. Anyway, the reverend gentleman distributed gifts in a very satisfying way, and was even able to stay for a little dancing before taking the Northward trail again.

“Al’s Melody Boys” tooted and drummed in an extremely toe-tickling manner for the dancing. Refreshments of punch and cookies were served under the direction of Warren Buckley.

Both the Minstrel Show and Frolic reflected most creditably upon the class advisers, Miss MacBrayne and Miss Wells.

Senior Prom

Senior Prom! Light and color and music! Trailing, multiple-tinted gowns, contrasting with the dark dress of the masculine dancers, and all moving, endlessly moving, to the low beat of the orchestra! This was the big event of the year, anticipated for weeks, looked back on for many more weeks, endlessly discussed, always remembered. No other affair in high school is quite like it; no other can be.

This year the Seniors held their Prom on January 29, and on that evening many students and townspeople were seen on their way to the hall. A transformed hall it was—all in black and white, with the stately silhouettes of minuet dancers adorning the walls. Even the dance orders carried out the prevailing colors, than which no better could have been chosen to set off the bright tints of the crowd.

Gilmore’s Orchestra furnished the music which kept this brilliant group whirling, swinging past the carelessly watchful stag line and the interested on-lookers. On and on—a pause for much-appreciated refreshments—and then on again, until the strains of “Home, Sweet Home” broke in altogether too early, and the Senior Prom of 1932 was a thing of the past, taking its place with other proms that have been. So few hours, and so soon over!

Such an evening, so well planned and so complete in every detail, made us realize and appreciate the ability of Miss Booth and Miss Walter.

Health Club Party

Green bows and green ties were the predominant features at the Health Club Party, on March 17. Everyone seemed willing to hail St. Patrick! We were very fortunate in being entertained by the “Boswell Sisters”, none other than Harriet Pevey, Elizabeth Chalmers, and Regina Rutner. Charles Donaldson proved to us that there was rhythm in those long limbs of his, by some fine eccentric dancing. Another feature was a really thrilling mock wedding. First in line entered the minister, Martha Kirk, all ready to perform the sacred ceremony, followed by the sorrowing mother and father, Marianna Hemenway and Eva Johnson. The ring bearer, Helen Christoun, preceded the happy bride and groom, Helen Brennan and Lillian Dupras, attended by Delia Smith, Mildred Lukes and Frances Paignon.

Dancing was enjoyed to the lively tunes of John Clarke’s Orchestra, and very appetizing refreshments of ice cream and cake were served under the direction of Dorothy Dunham.

Much credit is due Mrs. Lewis, who worked hard to make the party a success.



Freshman Party

Came April Fool's Day—and the Freshman Party. Appropriate or not, the date in no way interfered with the success of the party. Clever children, these Freshmen!—their musical revue proved that, with its peppy songs, clever dancing, and original jokes. No other Freshman class has ever been so ambitious.

The specialties were ably presented by Claudia Belida, Mary Devine, Rita Ferron, Harold Hindman, Norman Hoelzel, Margaret Lantagne, Edith Lewis, Thelma Marinel, Helen McQuade, Harold Petterson, and Esther Staveley. Genevieve Stearns acted as accompanist.

It was felt by everyone present that Miss Libby was entitled to special credit for her management of this excellent party. The freshmen manifested their appreciation by presenting her with a bouquet of flowers.

Dancing to the music of Valentine's Orchestra, and refreshments of ice cream and cake served by a committee under the direction of Joyce Marinel brought the afternoon to a close.

Sophomore Party

Take a glance at that cute little couple over there! Despite all that grease-paint, their faces seem familiar. Why, it's Marguerite Hannaford and Lawrence Judge doing their "stuff" at the sophomore party! Their number is entitled "The Wooden Soldier and the Painted Doll"—and they fit their roles to the proverbial "t".

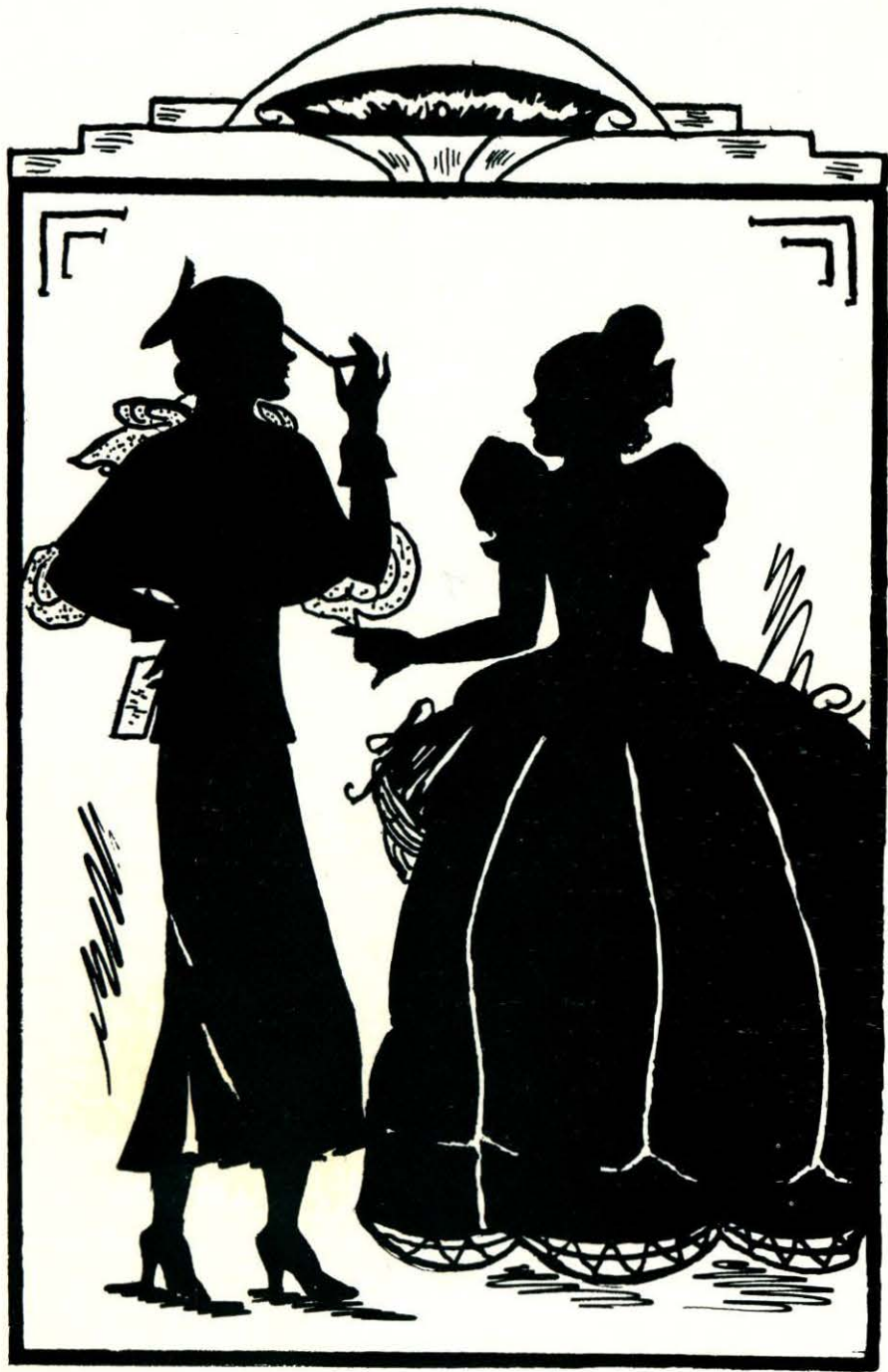
After one postponement, this party, under the able direction of Miss Monahan, successfully took place on May 17, in the McFarlin gymnasium. Amid colorful decorations of spring blossoms, the dancers glided across the polished (?) dance floor. Popular songs, which dominated the entertainment at this party, were rendered by the more talented members of the class of '34, among whom were Dorothy Butters, Ellen Lundstrom, Mary DeAmicis, Virginia Hines, and Eva Barker. Napoleon Valentine contributed several accordion solos, and a tap dance was ably presented by Monica Todd.

It was wondered why this event had been heralded as a balloon party, but the title was justified when the grand march was announced, for at this time each of those present was given a balloon. Then the procession was led to the hit of the party—refreshments! Dancing was resumed and, at 6 o'clock, the party came to an end.

Judging by the fine time we were given at this party, we are convinced that this sophomore class will succeed the present Junior Class with great success.



you continue
pitch it straight We
will not say of our
score. Keep up
papers. R. B. 33



A, B, C's



The A, B, C's of 1932

A is for Armstrong, a jolly good friend,
May she find joy in life right to the end.

B is for Benest, a learned young lass,
One of the top-notchers in our class.

B is for Brennan, of shorthand fame,
Just watch her speed in writing the same.

B is for Brennan, a sister of Lizzie,
She's sure done her best to keep herself busy.

B is for Bridgeford, who has gained our esteem
For her clever antics on the Basketball team.

B is for Bridges, demure and sweet,
She is never found on our village streets.

B is for Buchanan, in the Westlands he dwells,
Many are the humorous tales he tells.

C is for Chalmers, with black curly hair,
To all of our mischief she contributes her share.

C is for Christoun, a star athlete,
She certainly made her passes complete.

C is for Clark, so neat and so prim,
May her life be happiness clear to the brim.

C is for Clement, an adept at art,
She's not at all lacking in affairs of the heart.

C is for Cornwall, of most serious mind,
Every good class needs one of his kind.

D is for Davis, she's still the class baby—
Her numerous giggles are a sign of it, maybe.

D is for Dean, known as Genieve,
Who, we are sure, would never deceive.

D is for Dean, with duties galore—
"No selling candy on the first floor!"

D is for Dexter, with her sunny smile,
May it abide with her all of the while.

D is for Dixon, so handsome and tall,
He really is most unassuming of all.

D is for Dunham, the platinum blonde,
Of pretty clothes she surely is fond.

D is for Dupras, a shorty that's all,
We wish she'd eat rubber,—stretch and grow tall.

E is for Elliott, who sure can debate,
Her success in the future may history relate.

E is for Emerson, a slender brunette,
Her rival in history she never has met.



E is for Eriksen, with flaming red hair,
Thank goodness her temper ne'er flies in the air.

F is for Foye, who looks like a dream,
And who, we are sure, lives on peaches and cream.

G is for Gaudette, whose carefree way
Makes her happy the live-long day.

G is for Greenlaw, there's not much to relate,
She's always been so very sedate.

G is for Greenlaw, our musical pride,
His superior talent cannot be denied.

H is for Hedlund, who comes from the East,
She always is happy, to say the least.

H is for Hemenway, an ideal friend,
To both work and play she knows how to attend.

H is for Hill, the good looker from East,
He could well advertise Palmolive or Yeast.

H is for Hoelzel, who speaks her mind,
A fitting career she'll surely find.

I is for Industry, by all of us shared,
In this respect no class has compared.

J is for Jensen who knows how to draw,
She paints every picture without ever a flaw.

J is for Johnson, our scholarly star,
We know her fame will spread afar.

J is for Johnson, the "terrible Swede",
So fair, and so coy, and so able, indeed.

J is for Johnson, an all-round man,
Who gladdens the heart of the athletic fan.

K is for Kinch, whose melodious voice,
Announces himself as a fair lady's choice.

K is for Kirk, who sings with much ease,
And at acting in drama, she's fine—if you please.

L is for Loïselle, a lady most gracious,
We'll never hear of her being audacious.

L is for Loïselle, a shy, quiet miss,
Whose gentle refinement is certainly bliss.

L is for Lord, our newest member,
But his bashful manner we'll always remember.

L is for Lovering, long live his name,
His manners will bring him honor and fame.

L is for Lukes, a maiden so fair,
We all admire her soft, wavy hair.

M is for Machon, whose red cheeks we adore,
We know she can't buy that in the ten-cent store.



M is for MacLean, a very light blonde,
A lady of whom we all are so fond.

M is for MacNeill, who always can smile,
As a friend, indeed, she's very worth while.

M is for McEnaney, with beautiful hair,
I wish she'd fall for our gallants so fair.

M is for McEnaney, a right clever sort,
Many the riotous scenes he's wrought.

M is for McTeague, better known as Rita,
When it comes to talking, no one can beat her.

M is for Mills, so meek and so mild,
Who knows what the future may hold for this child?

M is for Morrell, who made many a goal;
Is it East Chelmsford air that makes his Ford roll?

M is for Murphy, a "clipper" for fair,
He sure knows the latest of styles for the hair.

M is for Murphy, who hails from the "Cove".
When she's not dancing she's home by the stove.

N is for Nichols, of courteous manner,
He will do his bit for the Dartmouth banner.

N is for Norton, so shy and demure,
Success as a nurse awaits her, we're sure.

O is for Olsson, to High School he came
To talk and to walk himself into fame.

P is for Paignon, with black, shiny curls,
The envy of all of the straight-haired girls.

P is for Parkhurst, Plymouth, and all,
We've noticed his growing interest in ball.

P is for Perham, our pride on the mound,
We wonder—next year will his equal be found?

P is for Peterson, "Miss Chelmsford" you know—
Atlantic City will be the next show.

P is for Pevey, perpetual pep,
As lively a lady as ever you met.

P is for Proctor, who manages teams,
To cover her merits we'd have to write reams.

P is for Purcell, the Southern boy—
To the history class he's a pride and joy.

Q is for Quality, the aim of us all,
May each of us ever adhere to its call.

R is for Richardson, with cheeks so pink,
No wonder the girls love to see him wink.

R is for Robinson, oft seen on Bridge Street,
He is just like a cop patrolling that beat.



R is for Rutner, good natured toward all,
With her winning smile, no wonder "they" fall.

S is for Scobie, whose good-natured grin,
Has attracted many a maiden to him.

S is for Sheehan, of alphabetic fame.
I've worked like a Trojan to rival the same.

S is for Smith, a girl from South Row,
She is tied to Mary just like a bow.

S is for Sousa, so calm and refined,
We all should envy her quick, active mind.

S is for Stanewicz, our own football star,
In the sport world his name will go far.

S is for Staples, with babyish face,
She's sure to be one step ahead in the race.

S is for Sturtevant, who makes keyboards talk,
If you're looking for her, she's out for a walk.

T is for Trull, toward music inclined ;
Will the Year Book Staff get a piece of his mind ?

U is for Union, important to all,
"United we stand, divided we fall".

V is for Vennard, personality plus—
His mischievous charm has won all of us.

W is for Walton, who is jolly good fun,
Leah is known to everyone.

W is for Wheeler, who drives a new car ;
His rating in music is far above par.

W is for Whitcomb, toothless and gay,
Whose hair tends to curl in its very own way.

W is for Wikander, from the city line,
She's happy-go-lucky all of the time.

X is for Xerxes, the great Persian King,
May our memory, as well, through the ages ring.

Y is for Yarn, if wrongly spun,
It does much damage to everyone.

Z is for Zeal, we've all tried to show,
Trying to gather the facts that we know.





Echoes of C. H. S.

It's after 8:00, therefore, talking should cease!
What's next? Period 2—I'm sunk!
No, it's not written on my face, it's in the book.
Isn't it customary to bring an admission blank after you've been
absent?
Oh, why was Caesar ever born?
Wrong stairs!
Feet off the chairs. (Room 10)
Save a little water in that fountain; I'm next.
It only requires 5¢ to obtain a bank-book.
Let's have some lime dice-mints.
You should support your school teams. 35¢ round trip.
Lots more weeds in the tennis court.
This is no place to file your nails.
Is there no justice!
Out again last night, I suppose!
Didn't I explain that fully yesterday?
Please walk on the stairs—not my feet!
How about using your powder puff for a jiffy?
And I wanted a Charlestown Chew!
May you profit by their example.
You'd better think it over in the hall.
What a gruesome tale!
Is that necessary?
Il y aura un petit (?) examen demain.
I thought High School pupils knew better—especially Seniors!
Do you choose to take the Inc.?
May I borrow your homework?
Chairs were made for one purpose only—so sit up.
Please use correct English.—Future tense.
Report for sessions at 2:30.
That sandwich sounds good, how does it taste?
The radiators are not lounges.
You might bring a pencil when you know there's written work to do.
What did you get for the answer?
Will anything penetrate into your head?
Well—must I wait all day?—Quiet!!!
You're wanted in the office!
This period is not over yet. (Study Hall)
How long did you spend in preparing your home work?
Flunk cards—That's *me*!
Did you ever think of using a dictionary?
Was she angry last period?
What did you get?
Notice:—All boys report to Room 10 immediately.
The End of A Perfect Day?



Who's Who In The Zoo

- Leo the Lion, King of the Jungle—Jerry Dean
- The Giraffe Family—Lysle Greenlaw, Muriel Bridges, Priscilla Emerson,
Raymond Buchanan, Albert Wheeler, Madeline Jensen
- The Laughing Hyenas—Dorothy Hoelzel, Eleanor Gaudette, Leah Walton,
Elizabeth Brennan
- The Chirping Cockatoos—Rita McTeague, Regina Rutner, Elizabeth Chal-
mers, Mary Sheehan, Delia Smith, Ruth Sturte-
vant
- The Proud Peacocks—Georgia Davis, Margaret Foye, Edith Machon,
Mildred Lukes, Carl Olsson
- The Tender Lambs—Mildred Norton, George Lord, Frances Paignon, Mary
Sousa, Paul Cornwall, Jeanette Loiselle
- The Loving Deers—Marjorie Armstrong, Dorothy Dunham, Raymond
Johnson, Arnold Lovering, Harriet Pevey, John Dixon
- The Grizzly Bears—John Kinch, George Whitecomb, Waldo Richardson,
Joseph Stanewicz
- The Shining Eagles—Eva Johnson, Adelheid Elliott, George Parkhurst,
Charles Nichols
- The Chatting Magpies—Dorothy Staples, Lillian Dupras, Agda Wikander,
Helen Christoun, Ruth Murphy
- The Dashing Snails—Mildred Eriksen, Harold Perham, Robert Murphy,
Esther Hedlund
- The Busy Beavers—Bessie Benest, Marianna Hemenway, Dorothy Mac-
Neill, Edna Dexter, Lillian Loiselle, Ruth Clark
- The Cocks of the Walk—John Trull, Mildred Peterson, Raymond Vennard,
Ruth Bridgeford
- The Domesticated Terriers—Helen Brennan, Hugh Hill, Marion Greenlaw,
Vera MacLean
- The Spotted Leopards—Lucille McEnaney, Wallace Scobie
- The Gay Larks—Laura Proctor, Leslie Mills, Martha Kirk, Enid Clement,
Herman Purcell, Genieve Dean
- The Wise and Otherwise Owls—Frank Morrell, Walter Johnson, Thomas
McEnaney, Chandler Robinson



We, who have come together for a while in this place of larger values, here have recorded a little of what we have found, knowing that for each the recompense has been different, and hoping that in that which is written between the lines each may find something of what the experience has meant to him.





Here's luck to my carrier - is that what
you call a person who passes "more than
books" in study hall? Loads of Luck

Helena '34.