

Harriet G. Brown

The YEAR BOOK



1 9 2 9

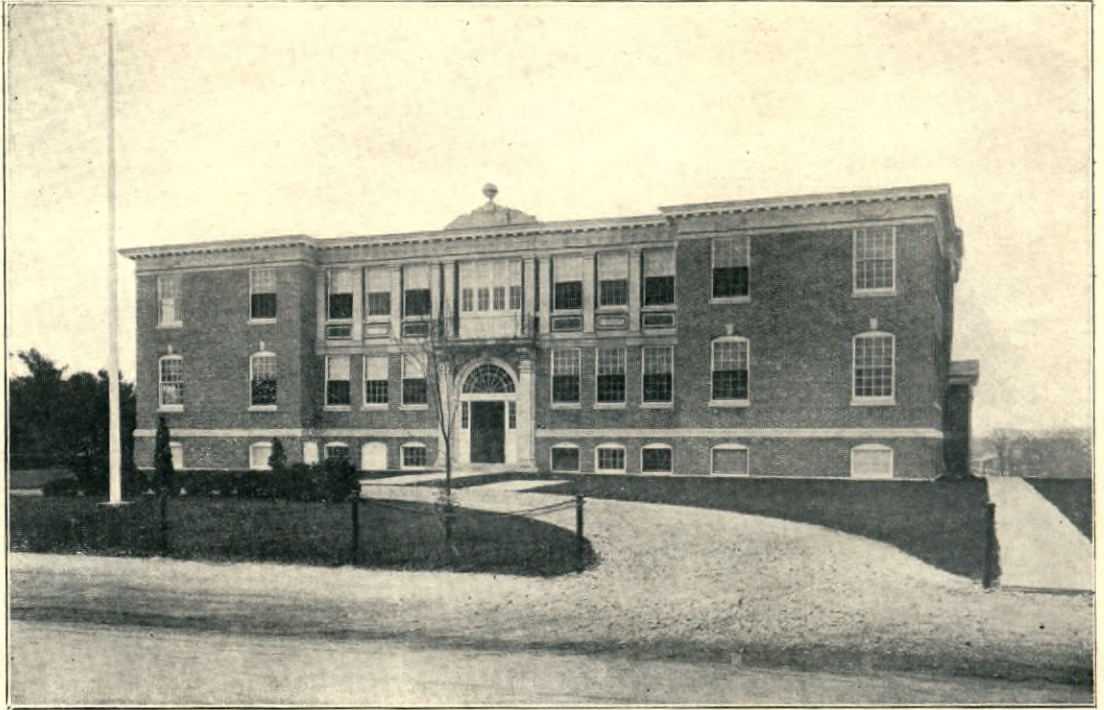
Chelmsford High School

W. L. Nelson Lindsale (Helen Pratt)

*Class of
Nineteen Hundred and Twenty-nine*



CHELMSFORD HIGH SCHOOL
CHELMSFORD, MASSACHUSETTS



CHELMSFORD HIGH SCHOOL

*Our hearts, our hopes, are all with thee,
Our hearts, our hopes, our prayers, our tears,
Our faith triumphant o'er our fears,
Are all with — are all with thee!*

— Longfellow.



DEDICATION

To

RALPH P. COATES

Assistant Principal of Chelmsford High School

who has worked so faithfully in
the interests of the students of Chelmsford
High School the Class of 1930 dedicates this book.

To the Students of Chelmsford High School:

There are two ways of opening a locked door. One is to fall at it and scratch, kick and shove. A better way is to have the key. Pluck and force and will power are all right in their place, but they are far from being the only secret of success. They are indeed silly without the key of preparation. Knowing how is half the battle; and to know how requires clever minds and clear thinking.

Some minds are like well tended gardens with long, clean orderly rows. Others are choked up with weeds, the valuable plants lost in a tangle of smothering things that are out of place. Elimination is necessary for a well tended garden and an orderly mind. The English historian, Macaulay, had a breadth of information and a remarkable memory, acquired by weeding out the unimportant details of his reading, by stopping after each page and going over in his mind the really significant points. Trying to remember too much is fatal to an orderly mind. The chief cause of weedy-mindedness is indecision, resulting from our failure to realize that which will be most valuable to us.

There are two other enemies of mankind to add to Indecision. They are Hurry and Worry.

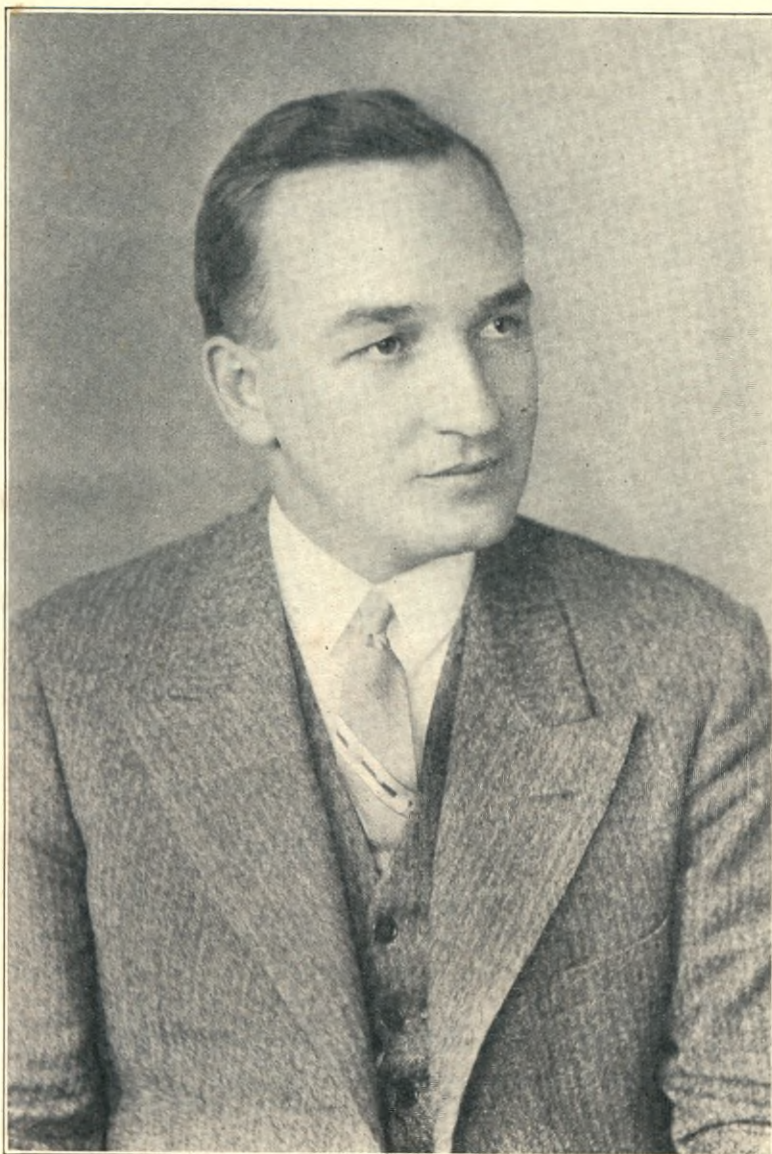
Hurry is a result of overstrain. Many people suffer from jangled nerves, dyspeptic stomachs, and sleepless nights, simply because they have done, not too much work, but work which was confused and crowded. The antidote to Hurry is System and a few lessons in orderly thinking.

Worry is nothing but fear in disguise. It is a weakness that shrinks from the necessary give-and-take of the struggle for existence. If a thing is inevitable, adjust yourself to it. If disaster looms, front it bravely. If responsibility is great, do your best.

Indecision is a lack of force. All forceful people decide quickly. You can never know absolutely what is best to be done, but our business is to know what is probably best. Decision rests on a balance of probabilities, not on perfect judgment. If we accustom ourselves to deciding rapidly in favor of what is probably best we save ourselves infinite distress.

It will be found in the history of most men who have achieved success, that this has been due to their decision in overcoming obstacles and not to their having had no obstacles to overcome. In fact obstacles are put before us as a challenge to our ability. Overcoming what is unpleasant, or that which puts a difficulty in our way, has a tendency to develop our faculties. Life is just one obstacle after another and "to him that overcometh shall be given the crown of life".

HORACE E. HOBBS.



left 30.

Horace E. Hobbs

PRINCIPAL OF CHELMSFORD HIGH SCHOOL

Horace E. Hobbs.



Back row: E. Thwing, H. Reed, E. Donahoe, D. Torrey, J. Low, A. Monahan, C. Booth, E. McCarthy.
Front row: H. Dunigan, R. Coates, G. S. Wright, H. E. Hobbs, C. Hyde.

George S. Wright—*Superintendent*

FACULTY

Horace E. Hobbs, Principal—*Algebra*.

Ralph P. Coates, Assistant Principal—*General Science, Chemistry, Physics*.

C. Edith McCarthy—*Bookkeeping, Typewriting, Introductory Business*.

Helen A. Reed—*English*.

F. Christine Booth—*Latin, Advanced Mathematics, Geometry*.

Edith M. Donahoe—*World History, Civics, Commercial Geography, English*.

Jeanne M. Low—*French*.

Hilda B. Dunigan—*Typewriting, Shorthand, Office Practice*.

Daniel W. Torrey—*Freshman Mathematics, Biology, American History*.

Anna B. Monahan—*English, Biology, Freshman Mathematics*.

SUPERVISORS

Ellsworth R. Thwing—*Physical Director*.

Charlotte Hyde—*Supervisor of Music*.



Back row: G. Reis, Miss Booth, H. Flemings, Miss McCarthy, E. Miner.
 Front row: M. Freeman, C. Dexter, E. Hoyt, B. Quinn, D. Smith, W. Simpson, V. Welch.

YEAR BOOK STAFF

<i>Editor in Chief</i>	Brendan Quinn
<i>Literary Editor</i>	Wendell Simpson
<i>Humor Editor</i>	George Reis
<i>Art Editor</i>	Clara Dexter
<i>Social Editor</i>	Veronica Welch
<i>Sport Editor</i>	Edward Miner
<i>Business Manager</i>	Donald Smith
<i>Assistant Business Manager</i>	Edna Hoyt
<i>Sales Manager</i>	Madeline Freeman
<i>Advertising Manager</i>	Harriet Flemings
<i>Faculty Advisors</i>	C. Edith McCarthy
	Christine Booth

In the days that are to come may you always find pleasure in glancing over the pages of our book, and may you live again your high school days in all their youthful joys.

CLASS ODE

There's no royal road to follow,
Opposition blocks our way,
Many times we'll slip and falter,
Still we'll yield not in dismay.
Onward we will look forever,
Seeking for the good and true,
Climbing upward till we conquer
Tasks we set ourselves to do.

* * * *

At the present, we are laying
Our foundations, strong and firm,
Building for our future life work,
Aiming, striving till we earn
Laurels that will crown achievements,
Results of our persistency;
Holding steadfast to our motto,
Though the journey's end we see.

* * * *

As the afterglow of sunset
Binds the night unto the day,
Let us join ourselves with justice,
Truth and honor—come what may.

E. P. '29

OUR PRESIDENT

JOHN JOSEPH McQUADE
 A. A. Treasurer
 Senior Play
 Operetta '28, '29
 Member at Large, A. A. '28

"Mac"
 Debating Club
 Glee Club
 Orchestra '28
 Year Book '28



As President for three years we have yet to find "Mac" without an ever willing hand to carry out that which is for the best interest of the class. He is a young man of much activity and ability. Yes, this is the fellow who helped put our Operettas on the map, as well as our Senior Play. The stage seems to be made on purpose for "Mac"—he feels so at home and acts so naturally there. And doesn't he love those "asides" with the audiences! His business ability has been clearly shown as the manager of the noon day candy vendors. Time and again Room 10 has reverberated with the tones of "Mac's" violin.

This is "Mac" as we known him, and it will be "Mac" as the world will receive him in the unknown days which lie beyond commencement.

OUR VICE PRESIDENT

AGNES LAURA OLSEN
 Basketball '29
 Glee Club
 Class Sec. and Treas. '28

"Cake"
 Operetta '28
 Senior Play
 Senior Prom Com.



Who is the girl with the fair hair, the blue eyes, and the irresistible smile—"Cake", of course! We never could decide whether we liked her most for her sunny disposition, her dancing, her athletic work, or her splendid portrayal of such characters as "Grandmother Thayer".

Are you seeking a girl to take walking in the spring, sporting in the summer, "Hare and Hound" chasing in the fall, or dancing in the winter? If so,—choose Agnes.

We are glad she was here with us for four happy years and we assure her that she will be securely linked in our memories.

OUR SECRETARY AND TREASURER

ANNETTE MARIE LOISELLE
 Bank Treasurer
 Glee Club, Librarian
 Debating Club

Motto Committee
 Year Book '28
 Senior Play and Operetta,
 Ticket Committees



Here is our business woman. Whenever a problem or a difficulty presents itself which necessitates energy and conscientious attention to duty for its solution, look for Annette. She has been responsible in great measure in upholding the standard of our office practice class. Annette has taken keen interest in stenography and bookkeeping during her school days and has been a most efficient treasurer of our School Savings Bank. However, don't think Annette is all seriousness—she's not! Her ever-ready smile and readiness for fun have been enjoyed by us all.

Wherever the future may find her she will win lasting friendship by the aid of her greatest attribute—the desire to help.

working at Singel Ale Co.

RUTH AGNES BILLSON
 Basketball '29
 Glee Club, Pres. '29
 Debating Club
 Blue Moon

"Billy"
 Operetta '28, '29
 Year Book '28
 Senior Play Program Committee



If we were to characterize "Billy" we should do it this way—an attractive young lady, tall and slim in stature, an energetic student, and a loyal friend—ask Mac. This year "Billy" has contributed some excellent work to our school activities on programs and tickets. As "Kum Fa" in the Operetta we had our first opportunity to appreciate her musical ability. Then, too, she has played on the basketball team and worked hard to uphold its high standard of sportsmanship. It isn't to be wondered at that her mind should follow an athletic trend!

If all works well we expect to hear of Ruth as an outstanding physical director—Bon Voyage, Ruth.

working in No. Shelmeford

JOHN L. BIRTWELL
 Football '28, '29
 President, Debating Club
 French Club '28
 Year Book '28

"Burky"
 Glee Club
 Senior Play
 General Committee



Behold the arguing wanderer of Chelmsford High School. "Junior" sure has the lead on everyone. However, it is no wonder he wanders after a night of watering the rabbits, milking the cow, papering Auntie's room, and generally supporting (?) his family.

All joking aside John has shown all-around ability in his studies, dramatics, and music. As "Billy Bainbridge" in the Senior Play he surprised himself and delighted us. Also, this year, John conquered his bashfulness and appeared as an accomplished sax player in our orchestra. Likewise, he was one of the two eminent seniors who produced the famous "Masterpieces" in the Blue Moon.

We feel safe in trusting John's salvation to his own hands.

LORA FRANCES BOWEN

Basketball '28, '29
 French Club
 Latin Club
 A. A. Ex. Board, 1st Vice President
 Bank Trustee '28, '29
 Senior Play, Ticket Committee

Frances' trade mark is her smile, a sign of her good nature and sense of humor. Whether she is guarding her opponent in basketball or translating a particularly involved passage in French, you will find her smiling just the same. Although she does not advertise her ability and efficiency, we all realize that she has these qualities. She has been a valuable asset to the bank and an excellent "dispenser" of tickets for our school functions.

Frances believes that a professional career is the one she would like to follow. We can appreciate the fact that she is aiming at those qualifications which teaching requires. A good student, a good sport, and a true friend—we will miss you, Frances.



normal

MILDRED BUCHANAN

Glee Club
 Year Book '28
 "Milly"
 Senior Play, Ticket Committee

"Milly" is one of our modern girls and a popular member of the class. It's hard for most of us to be good natured all the time, but Mildred is one of those rare persons to whom it seems to come natural. We don't have to ask "Milly" why she and her pals are always late in the morning for it is evident from her personal appearance that it must be given the utmost attention regardless of the time.

Nothing ever troubles "Milly's" philosophical mind, and she always has a kind word for everyone. That must be the recipe for making friends, and it certainly works to perfection. When you enter training, "Milly" may you win as many more.



*Lowell
General Ho*

RUTH MARY CALDER

Glee Club
 Year Book '23

There is a touch of the Orient about Ruth—ivory skin, black eyes and straight dark hair. She is ever silent, unobtrusive, and industrious. We regret to say that we do not know Ruth as well as we would like, for she came to us our Junior year from Ludlow. However, she seems to have fitted into a special corner of our organization and has lent a very substantial support to our classes. We understand her favorite study is algebra—spelled in capital letters.

Although she is quiet and retiring about school the news of South Chelmsford leads us to believe she plays an active part in the social life of that thriving metropolis. We hope she will always take as active a part in the affairs of the world which she is now entering.



Spring fall

*Don't forget
to say hello to
all the folks
in
Ludlow
and
Spring
fall*

DOROTHY WOODIES COBURN

French Club
Bank Trustee '28, '29

"Dot"
Senior Play
Year Book '29

If all the world were frivolous, where would we get? Just so in the class of '29. But for her readiness to do a kind deed for anyone, Dorothy deserves our highest praise. True-hearted and conscientious, she has a reputation for accomplishing everything she undertakes. As "Miss Finitty" in the Senior Play "Dot" brought many a laugh and surprise. There is really lots of fun in Dorothy, too, and there's no better friend to all. Need a bugler for the entertainment, an assistant in translating that French? Just call on Dorothy,—she'll help you out of your difficulties. The brightest of futures for you, "Dot".



normal

EDNA MARY DAVIS

Debating Club, Secretary
Bank Trustee, Vice President
Blue Moon
Glee Club

"Ed"
Operetta '28, '29
Year Book '28
Senior Play, Stage Manager
Class Gift Committee

Behold one of the "real reliables". It is not an easy task to give with mathematical exactness just how many hours of hard work Edna has put into class activities. Her work as chairman of the senior dance, as assistant editor of the Blue Moon, as stage manager of the Senior Play, as Vice President of the School Bank is a proof of her ability. Blessed with a tendency to do the right thing, she rates in the upper section of all her classes. This year a few extra hours have been allotted to pinning and repinning the bobbed hair of 1927. Incidentally, Edna is a committee of one on a new award board in the school!

For all her hours of friendship and labor we wish her twice as many hours of good fortune and reward.



DOROTHY ROSE DIXON

French Club
Glee Club
Operetta '28, '29

"Dicky"
Senior Play
Year Book '28

Radiant, colorful, vivacious, "Dot" is the life of every party. And can she dance—we'll say!—and with the latest jazz steps and the newest line of conversation. She is not only our leading society belle, but an accomplished singer and actress as well. Who could help falling in love with such a charming daughter of the originator of Pennington's Pickles or his honor the Mandarin, especially when to such a pleasing personality a perfectly delightful voice was added? "Dot" is popular among both boys and girls for her unflinching good humor and her fondness for fun. Here's to you, "Dot"!



married

PAUL L. DUNIGAN

Baseball '27, '29
Basketball '29

"Poodles"
Track '29
Debating Club, Vice President

Stand back, girls—Freshman girls—you'll all have your chance to see the gentleman we're presenting—Paul Dunigan, commonly known as "Poodles". His popularity among this particular group is something which even Paul himself can't explain. Besides being quite a man with the ladies, "Poodles" has been conspicuous in other fields as well. He is a good baseball player and during the interclass basketball season he certainly put a lot of pep into the senior team. He is our star physics student and, in fact, takes all his studies seriously. You may be sure that the good wishes of your high school friends will follow you, "Poodles".



college

Haley's store



RAYMOND ARTHUR ENO
Baseball '27, '29
Year Book '28

"Gyp"
Track '27, '29

Be square, be a good sport, mind your own business, and pick a husky pal, if you wish to travel the road of popularity with Eno. He is our prize United States History student. All questions in this subject are "soft-picking" for him. He is also an English student of renown, especially when the subject is "The History of Literature." "Gyp" is a smart, snappy athlete, playing a "hot-corner" in baseball and speeding a fleet foot on the track. He is an expert in the manly art of self-defense and is always trying out punches on the person of poor lil' "Dogs" McGlinchey. "Dogs" says that if it doesn't stop, he is going to complain to the office.

We will miss you, "Gyp". G'Luck.

St. John Hospital



MARY RITA FITZPATRICK
Basketball '29
French Club
Debating Club

"Fitzie"
Operetta '29
Year Book '28

"Fitzie" is small. But, oh my, can't she be noisy when she chooses! Although her size doesn't seem half big enough for her activities, her heart is big enough for everyone. To hear her jabber about her French lessons in the morning one would think she had spent half the night studying. Will it be France after graduation "Fitzie"?

A live wire at basketball and a good sport above all, may you continue "smiling through".

working in A. & P.



JAMES J. GALE
Football '28
Basketball '28

"Windy"
Debating Club
Year Book '28

Do you want to find "Jimmie"? Well now, you'll find him either in the lab or sauntering leisurely along the corridor. You can't fail to recognize him—the match will tell. "Windy" is the one who drives the Studebaker which has disturbed the slumbers of peaceful Chelmsfordites so much of late. He was one of our athletes last year and his team mates regretted the fact that he had to work after school this year—thus having to give up sports. We hope that this experience outside of school will help him in the years to come.



MARION WINIFRED GRANTZ
French Club
Debating Club
Glee Club

"Grantzie"
Bank Trustee
Year Book '28
Motto Committee

This little miss, quiet and unassuming, has manifested in her three years with us the qualities that have created a true friendship. She has always reminded us of the little girl who tries to seem grown-up. This year she has tried harder and has seemed a little more grave because of her added duties and responsibilities—namely, acting as "big sister" to the giant president of the Freshman Class—Master Paul.

Marion has been a good scholar and is said to be the receiver of the "largest medal" ever awarded in the commercial department. May she go on through the world using as her motto, "Bigger and Better Awards."

CATHERINE FRANCES HEHIR
Glee Club

"Kay"



Catherine is our happy-go-lucky girl. She casts care to the winds and is always ready for a good time. Incidentally, she is the one who introduced the idea of having breakfast in school—with such things as pickles, cake, and ice cream predominating in the menu. Seriously, though, Catherine has been a credit to our school. In the office practice class she has been a source of much work and humor. In the Glee Club, she has made her mark, assisting in the quartette.

May you go on your cheerful way, Catherine, and continue to make sunshine for the world.

CLIFFORD MANSFIELD HOYT

"Paddy"

Basketball '28, '29
Baseball '29
Football '29
Track '28

Debating Club
A. A. Executive Board, 2nd Vice President
Glee Club
Senior Play, Stage Manager



Do gentlemen prefer blondes? If they do, "Paddy" is a decided gentleman, but he goes further—not being satisfied with one at a time. We wonder how they stand for it, but then one who knows him intimately realizes he is some heart breaker. This year he has played "Big Brother" to more than Edna—especially to our feminine freshmen. Girls are not "Paddy's" only interest, however, for he has strong athletic inclinations. Football, basketball, baseball, and track all admit him as a star. One is not surprised to find him in the laboratory, either delving in the mysteries of things scientific, or entering an argument over matters most vitally important! We'll miss you, "Paddy" in more than one respect.

RUTH HELENE JOHNSON

"Johnny"

President, School Bank
Glee Club

Operetta '28
Year Book '28



Dignified, gracious, neat, and charming—Ruth has been one of our popular classmates. She has always taken an active interest in the affairs of our class and school. As president of the bank she has kept us alert to the value of systematic saving. Each week with her appropriate notice on the black boards she has reminded us of our banking privileges which otherwise we would have ignored.

This year, however, "Johnny" quite outgrew us. She is the only senior girl who can talk of blue prints for houses, the latest in draperies, etc. Have you guessed? She is going to take a decided step after graduation into the sea of matrimony. We wish her only the best of success and happiness.

married

ARTHUR P. KIRK

"Tack"

Football '28
Debating Club
A. A. Board '28
Operetta '29

Business Manager Year Book '28
Gift Committee
Manager, Magazine Drive '28, '29
Senior Play



Put on those footlights! Don't forget the lightening—have everything ready for the thunder! Where's KIRK? What will Miss Reed do without his assistance at the Senior Play next year?

We predict great things for Kirk along theatrical lines, for if he isn't found flashing the spot light on the latest revue, his dramatic talent will bring him fame—but don't forget—he sings. That deep magnetic voice! He is indeed a young man of many achievements and his sense of humor has been instrumental in getting him out of many tight places. Then, too, Kirk, has been indispensable as a business manager, for without his guiding hand would the subscription campaigns have been so successful, or the 1928 year book so splendid? We doubt it. We expect to hear from you in the future, Kirk.



married

LENA L. LYMAN

"Al"

Glee Club

Senior Play Ticket Committee

Note the three l's. They stand life, love, laughter—and Lena. From a bashful quiet freshman Lena has grown to be a dignified and sophisticated senior. Her gentle manners and winning smile have made her very dear to us. This year she has taken great interest in aeroplanes and is one of the few of our members who has risen from the earth. As yet Lena hasn't decided on her life's work. A good sport and pal—may she turn every opportunity into success.



college in Springfield

WILBUR McCORMACK

"Bill"

Captain, Football '28, '29

Glee Club

Baseball '28, '29

Debating Club, Director

Basketball '29

Latin Club

Track '28

Operetta '28, '29

President, A. A. '29

Senior Play

Secretary, A. A. '28

Senior Prom Committee

Take a squint at the activities of "Bill" and judge his abilities for yourself. There are few members of the class who can boast of the popularity of our good looking friend with the curly hair. Athletics have predominated his school-life. He has given his all—including a tooth a year—to the great god "Sport". Everyone has praised the skill which "Bill" has displayed in all events and admired the spirit of sportsmanship which he has never failed to show, whether winning or losing. "Bill" is one of our 3 letter men. For 2 years he has been captain of the football team, and a snappy catcher of the baseball nine. During the season of '29 he contributed substantially to the score of our basketball season. Recall the Senior Play and the Operettas and his dramatic ability will stand out clearly. His amiable disposition has drawn to him a host of friends—girls are by no means lacking in that group. May you always be on top, "Bill".



normal

LESLIE MARY McDONALD

"Les"

Glee Club '28, '29

Year Book '28

Orchestra '29

Senior Play, Stage Manager '29

Operetta '28, '29 (Pianist)

Leslie is a very conservative young lady—but watch out—she is full of surprises. In spite of the fact that her crowning glory is of reddish hue, the quick temper which usually accompanies such locks, at least as far as we know, seems to be lacking. "Les" is an accomplished pianist as was shown in her work with the intricacies of the music for our last two operettas. What will your many friends—and a very special one—do without you next year? Best of Luck.



RAYMOND JOSEPH McGLINCHEY

"Dogs"

Football '28, '29

Track '28

Basketball '28, '29

Glee Club

Baseball '27, '28, '29

Whenever we speak of "Dogs" McGlinchey, we think of the brilliant baseball and football seasons of Chelmsford High. He is the Babe Ruth of our district and captained our baseball team in 1928. "Dogs" is also a famous halfback—can he hit that line?—ask some of our opponents. Besides all this he plays with the basketball squad. His reputation for eating has spread far and wide and in this department he is the undisputed school champion. He and Eno are inseparable companions, sometimes known as "Mutt and Jeff". He has a way with the ladies, too,—we're thinking of one in particular. "Dog" is blessed with a personality, which, for want of a better word, we call pleasing, and a sense of humor (especially at movies) that has made him most popular with us all from Freshmen to Faculty.

MABELLE LORRAINE MORRELL
 Debating Club
 French Club

"Maybe"
 Year Book '28



A red dress—a toss of the head—and then a giggle. With that giggle your suspicions become a certainty—it's Mabelle. It appears to be her greatest virtue to speak what she thinks. She may have rather decided opinions but she can always be depended upon to stay by them. Just try to demerit a certain section of this town and see what "Maybe", its ardent defender, will say! We've had some good times with you, "Maybe", and more than one will miss you next year. Here's health, wealth, and happiness to you!

HELEN W. NEWMAN
 French Club '28, '29

Whatever the weather may be, there is always sunshine around Helen. Her cheerfulness, understanding, and sympathy make her an ideal friend. She can concentrate on her work while we are whispering and having a good time near her, and when we, at the last moment, start our work she is willing to turn aside to help us. Ask her anything from "Les Miserables" to advanced bookkeeping—Helen is right there with the correct answer.

With a disposition made to be liked, with a bright sweet manner, Helen has won a place in our hearts to be reserved for all time.



hospital

EBBA A. PETERSON
 Editor-in-Chief, Blue Moon
 Secretary and Treasurer, French Club
 Bank Trustee

"Petie"
 Debating Club
 Year Book '28, Editor
 Invitation Committee

Have you read the editorials in the "Blue Moon"?—then you've seen much of Ebba's literary work and can appreciate the fact that above all things she is capable. When Senior honors were announced, everyone was pleased, but not at all surprised, to find that Ebba had won the honor of being salutatorian. Aside from the fact that she excels in the classroom, Ebba finds time to participate in many extra-curricula activities. A mere glance at the above list is a proof of that. Levelheaded, sympathetic, and a true friend, Ebba has made a place for herself which will be hard to fill.



normal

THELMA AMY PETERSON
 Basketball '29

"Pete"

Here's another one of the athletes of our class, always right there to help score another point. She is a good sport and winning or losing she does her best. With a twinkle in her eye and smile on her lips she goes right ahead making friends, "Pete," along with her two body-guards, may be seen every morning hurrying up the stairs of Room 5 just as the door is about to be closed for exercises. We wonder what keeps them so late. Will you help us out, "Pete"? In your future work may you be as cheery as you have been in Chelmsford High School.





College

JOSEPHINE MARGARET QUIGLEY

"Josie"

Latin Club
 French Club, Vice President
 Debating Club
 Blue Moon

Bank Trustee, Assistant Treasurer
 Year Book '28
 Senior Play
 General Committee

We all feel glad to have had "Josie" loaned to us for four years. Skipping along with her chum "Milly" she has covered many extra miles in C. H. S. However, she has lent strong support to the Blue Moon, Bank, and many other school activities.

As "Shelia Thayer", the leading lady in the Senior Play "Josie" unquestionably scored a hit. The art of acting, however, is not the only talent this young lady possesses. Her singing equals, if not excels, her acting.

Our observation of "Josie" leads us to believe that her career at Boston University will be one of popularity and success.



Normal

BERTHA I. SEARS

"Bert"

Year Book '28
 Latin Club

Blue Moon
 Secretary, A. A. Board

Bertha is a very serious and conservative young lady. Her high school days have been joyous and extremely busy. The classroom has always been brightened by Bertha's recitations and ever-ready enthusiasm. Her ability covers a rather varied scope from bookkeeping to Latin. Athletics, club work, newspaper reporting—or come what may—Bertha will do her share and do it well.

A will to work, a pleasant good nature, and a desire to get ahead are your good characteristics and promise of success. May your days at Lowell Normal bring you just reward.



MILDRED MARIE SHINKWIN

"Milly"

President, French Club
 Latin Club
 Debating Club
 Business Manager, Blue Moon

Senior Play
 Year Book '28
 Class Gift Committee

Popularity, efficiency, style, poise—all these are characteristics of Mildred. Despite the fact that she stands high in her classes, she finds time for pleasure, her greatest delights being skating and dancing. As "Lynn Delorme" in the Senior Play Mildred was to us her own sweet self, a good sport, a delightful companion, and a pal one couldn't get along without. As business manager of the Blue Moon Mildred has been A#1—prompt, peppy, and up-to-date.

We understand she plans to enter Burdett College and we feel no cause for worry because her mind travels as fast as her neat spike heels. More power to you, Mildred!



BEATRICE ESTELLE SMITH

"Bee"

Glee Club
 French Club
 Debating Club

Latin Club
 Operetta '28, '29
 Year Book '28

Hail, a lady to the finger tips. "Bee" is one of our quiet demure members, yet we find her silence of an interesting sort. She has impressed us all with her unobtrusive personality and enviable earnestness of endeavor. We shall always remember her as "a faithful worker for the success of the class".

"Bee" has found time to enter into dramatics and athletics, participating in the operetta and basketball.

Many unfortunate sick will be relieved to hear their health will be in "Bee's" capable hands as she is planning to be a registered nurse.

EARL JOSEPH WATT

Basketball '28, '29
French Club
Latin Club

Debating Club
A. A. Ex. Board
Invitation Committee

Introducing Mr. Watt, the valedictorian of our class. English, Latin, Physics, or what have you—it makes no difference to Earl. He just sails along, receiving his bi-monthly crop of A's. Too bad he can't auction some of them off! Just the same, he does admit that that fellow Virgil has him guessing at times. Studying has not taken all Earl's time for he has starred in basketball and plays tennis. Oh boy, and how Whiting keeps him in trim!

Earl plans to enter "Jawn Haward's" little prep school. We do not need to wish him well because he has in himself all of the qualities necessary for success.



*Haward
college
not 934 - French
teacher now*

BENJAMIN McLEAN WHITING

French Club
Invitation Committee

"Ben"
Latin Club

"Benny's" tall form and ready smile are well-known throughout the school. Perhaps one reason for his popularity is that he never lets his studies bother him—that is, except Latin. How he does rave about Virgil! And how he does delight in reading his eloquent (?) translations! On the tennis court he is a shark, holding one of the unofficial championships of the school. "Benny" has only one bad habit that we know of—the constant singing of the praises of some school or other, called "W———". We all have enjoyed "Ben"—his sunny disposition has accumulated many friends for him, and although he is going from Chelmsford High School he leaves with us the memory of a happy friendship.



college

LETITIA A. WINTERS

Glee Club

"Letty"

"Letty" is a merry girl who doesn't believe in silence any more than she believes in worrying. Conversation is never lacking when she is around. Her chief subject is "How to wash 300 bottles a day and retain a girlish figure." But why should this spirit of mirth be late? Well, the Westlands is a long walk for delicate children—but so enjoyable with two delightful companions. Her good qualities are many; her bad ones—has she any?

We know not whither she goes from here but we do know she will win herself a place worthy of success.



*'31
Lowell
General Nov.*

ADAM C. ZABIEREK

Basketball '29
Debating Club

"Zeb"
Blue Moon
Year Book '28

"Zeb" is a very quiet, somewhat bashful young man, whose greatest interest is aviation. He keeps the rest of the boys supplied with literature on the subject and is always willing to digress on the relative values of "sky-hooks" and rumble-seats for aeroplanes. The Blue Moon shows that he has considerable talent in drawing, but for real testimony—ask the solid geometry class! "Zeb" hopes to join the ranks of Northeastern. Here's to him! May he prove to be always as we have found him—amiable, steadfast, and faithful.





CLASS OF 1930

OFFICERS

President
Vice President
Secretary-Treasurer

Donald Smith
 Thelma Paignon
 Clara Dexter

Here we are, at the end of our Junior year, soon to be seniors. This marks the close of quite an eventful season.

In December the Junior Frolic proved to be a great success. As in previous years a tree was decorated and a joke Christmas gift was given to each person present. The school orchestra furnished the music for dancing.

We decided to continue the custom that was started last year of publishing the Year Book. Under the direction of Miss Booth and Miss McCarthy the staff was very successful.

It was agreed that we have for our class ring one which bears the town seal. The undergraduates voted to adopt the design for their rings.

We are closing the year with the hope that we "jolly Juniors" will all be together again next year as "dignified Seniors".



CLASS OF 1931

President

Vice-President

Secretary-Treasurer

Donald Lupien

Mary McSheehy

Rita Ryan

Oh! to be a Sophomore. How good that sounded to us and how we, as lowly Freshmen, liked to say it. We dreamed of big things for the year ahead. But now it is over. We **are** Sophomores. We celebrated April Fool's Day by giving our class party at the Town Hall. Several members at this time had an opportunity to display their dramatic ability in the play, "The Villain Still Pursues Her." After the entertainment we all enjoyed dancing. In the interclass basketball games our girls' team defeated all but that of the Freshman class. But the year is almost completed now. It has come and gone too quickly. May we soon as upper-classmen go forward in our activities in a manner worthy of that of the pupils of Chelmsford High School.



CLASS OF 1932

OFFICERS

President
Vice President

Paul Grantz
Charles Nichols

We, the class of 1932, are very proud to boast of our numbers, for we are the largest class which has ever entered Chelmsford High School. We hope that we have conducted ourselves with the modesty which becomes green Freshmen.

Although we have not yet attempted any large project, there are three years ahead in which we intend to continue as our predecessors have done. May we reach our goal!



“ONLY ME”

The Senior Class presented a modern three act play, “Only Me”, in the Chelmsford Town Hall on January 31, 1929, and in the North Chelmsford Town Hall on February 1, 1929.

A nerve-racked, discouraged, and restless aviator was Billie Bainbridge, our clever friend John Birtwell, when our Senior Play opened. But Shelia Thayer, a character played so sweetly by “Josie” Quigley, helped him soon to overcome his cowardice. Shelia, pushed into the background by her snippy cousin, Evelyn, whom Dot Dixon portrayed with finished style, was a special favorite of Grandma Thayer. Agnes Olsen, delightful as Grandma, eighty years old and deaf, sought only to have everyone appreciate Shelia, who despite her retiring nature longed for young girl’s pleasures. Shelia was charmingly unsophisticated. Mildred Shinkwin, as Lynn Delorme, in spite of her spirit and modernism loved her for it. Lynn and Evelyn were beautiful. Why? Only because Miss Finnerty, the village hairdresser, spent hours of work on them with her Rejuveno hair restorer and Majico cold cream. Wasn’t Dot Coburn the precise and efficient hairdresser—yes—and talker—until she encountered the care-worn and time-burdened Dr. Delorme? The audience surely appreciated McQuade in his new role—if one can judge from applause. A mysterious character was Kirk, as Sancho de Garcia—but how truly Mexican with his accent, dark moustachios, and real sombrero! Mildred, as Lynn, carried her part well throughout the play, but especially so, when McCormack, the dilettante and man-of-fashion Nate Lansing appeared on the scene. He was so likeable, despite his weakness! Romance and color prevailed all through the play. Shelia and Billy, Evelyn and ?, Lynn and Nate, Sancho de Garcia and ? Tragedy, too, came when Nate Lansing fell wounded onto the floor in the Thayer living room. Suspicions followed. The truth revealed. The play ended—happily.

The lighting effects on the stage, which added so much to the performance, were managed by Arthur Kirk. Costumes and properties were in the charge of Miss Donahoe, who should be commended for her excellent taste and arrangement. Miss Reed has another play to add to her successful experiences of coaching our dramatics.



"The Dragon of Woo-Foo"

“THE DRAGON OF WOO FOO”

Who believes in dragons? “Seeing is believing” said the Mandarin, none other than our friend Kirk, disguised in goggles, mustache, and elaborate flowing robes. “But you heard him roar”, staunchly responded the Lord High Keeper of the Dragon, the stage-wise McQuade. “Then produce your Dragon, O Lord High Keeper,” replied the supercilious secretary of the Mandarin, Reis, “or there will be no more meals.” “What! No Meals?” asked Kling, the Keeper’s assistant, Bill McCormack. At this moment entered the Valiant Soldiers of Today lead by their Capt. Chan, the singing Quinn, whose love for the beautiful Kooie-Yan, Dot Dixon, is thwarted by the Mandarin. Now they plot together each to gain his greatest desire. Then, “fate and chance combine” and produce the American “Jackies”, Smith and Miner. “We can produce a dragon breathing fire and smoke, Eh, Jerry?” “Sure”. All assemble to see the Dragon—the audience waits with great expectancy.

The doors of the dragon house creek—and out from the horrible depths comes a raring, ramping, roaring, champing, reprehensible, indefensible brute. “Bravo, quite a famous dragon—something we can brag on”, shouts the chorus. Boldest of them all is old Poo-Chow, Mary McSheehy, the strong-minded and not over-popular Aunt of the Mandarin and the possessor of his precious amulet which protects its wearer from disaster. She steps up to the Dragon saying, “At last the Dragon we have met, Coo-ch-choo-ch-coo. Mama’s little petsie-pet, tootsie-tootsie-oo.” “WOW!” says the Dragon and snatches her in his talons and runs back to his lair, much to the delight of the audience, the dismay of the crowd, and the despair of Chan. “What’s wrong?” “Everything, my beloved.” The sailors had captured the wrong lady and Chan’s hope to play the hero to Kooie-Yan, thereby gaining the favor of her father, has failed.

The sailors wandering disconsolate in the bosky glen meet two charming young ladies, Kum-Fa and Lila-Yan, Ruth Billson and Olga Kempe, whom they are desirous of assisting. “Eh, Jerry?” “Sure.”

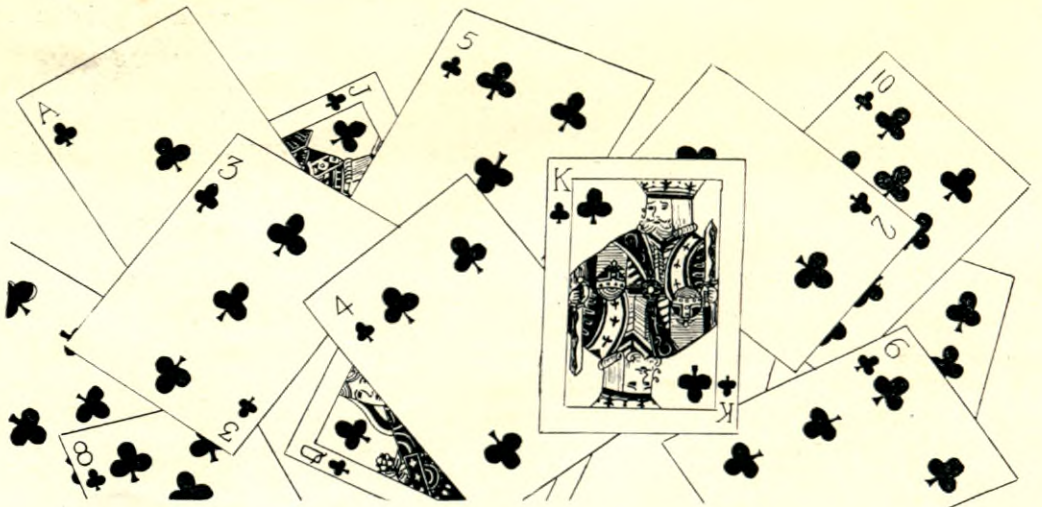
It is suggested to Chan that he redeem his fortune by rescuing Aunty from the terrible Dragon of Woo Foo and return to the Mandarin his amulet. As Chan is telling his plans to Kooie-Yan, aunty bursts from the Dragon house. Because she realizes that young love is a delicate flower, she is willing to return to the Dragon house and await her rescue—“but make it snappy, for I have a bridge party this afternoon.” Chan bids a “long farewell” to his followers who go to get their friends to witness the rescue. With sword in hand Chan approaches the door, enters, returns—“Gone.” “Gone?” At that, in comes Poo-Chow with the two sailors and explains she could not wait to be rescued. Through her sympathy for young lovers and her influence with the Mandarin she, by the return of the amulet, gains permission for Kooie-Yan and Chan to marry. All join with them rejoicing—“Our pledge we give to you, whatever fortunes decree, surely you will ever more be true. Ah, yes, and so will we.”

The chorus girls and Dragon keepers, in bright and fascinating costumes of real Chinese design and pattern, added greatly to the performance with lively steps and gay songs, as did the gallant soldiers of Chief Chan.

We extend our congratulations to Edith Charlton for her ever-ready and clever assistance. Edith did some excellent work in painting the stage setting and assisting with the costumes which were so colorful and artistic. Credit is also due to Adam Zabierek for his work of art in assisting with the decorations of the Dragon house.

Once more the school thanks Miss Helen Reed for her clever coaching of the actors and Miss Charlotte Hyde for her careful training of the musical numbers.

Chelmsford High School



CLUBS



BOYS' GLEE CLUB

Tenors

CLOUGH, R.
CORNEILLIER, M.
DIXON, J.
EMERY, C.
GREENLAW, G.
JOHNSON, W.
LOCAPO, A.
McCORMACK, W.

Bass

MINER, E.
PETERSON, A.
QUINN, B.
STURTEVANT, H.
VENNARD, R.
BIRTWELL, J.
GRANT, F.
GREIG, W.
HOYT, C.

KARCH, R.
KIDDER, A.
KIRK, A.
McENANEY, J.
PROCTOR, S.
ROBINSON, C.
SMITH, D.
WHEELER, A.
McQUADE, J.

A splendid group of boys and—good singers. This is what the director, Miss Hyde, states and she must know. The Boys' Glee Club is a pleasure in assembly singing to all members of the student body. When Dorothy Dixon, the accompanist, begins playing "Sonny Boy" or "My Wild Irish Rose" or particularly "On the Road to Mandalay", you will all readily hear a number of strong masculine voices holding their own among the feminine voices present. Three of its prominent graduating members, and a number of talented undergraduates took part in a musical comedy "The Dragon of Woo Foo" and showed exceptional musical and dramatic talent. The club will render two selections at the graduation exercises this year.



GIRLS' GLEE CLUB

*President**Secretary**Librarian**Assistant Librarian**Accompanist*

Ruth Billson
 Ebba Peterson
 Annette Loiselle
 Marion Grantz
 Leslie McDonald

1st Soprano

BEATTIE, A.
 BUCHANAN, M.
 CLARK, A.
 DAVIS, E.
 DEXTER, C.
 DIXON, D.
 FREEMAN, M.
 HOYT, E.
 HUTCHINSON, R.
 JOHNSON, R.
 KEMPE, O.
 LARKIN, A.
 McMULLEN, D.
 OLSEN, A.
 PAIGNON, T.

2nd Soprano

BRIDGEFORD, G.
 FLEMINGS, H.
 FISHER, A.
 PASCALL, M.
 PATENAUDE, A.
 PATENAUDE, B.
 PERHAM, L.
 RAYBALL, A.
 RIGBY, H.
 SMITH, B.
 SMITH, J.
 LYMAN, L.

Altos

ARMSTRONG, M.
 CALDER, R.
 CLEMENT, E.
 ELLIS, B.
 HEHIR, C.
 LUND, A.
 LYMAN, E.
 McSHEEHY, M.
 PETERSON, E.
 RUTNER, B.
 ST. ONGE, A.
 WINTERS, L.

The Girls' Glee Club comprises a representative group of the best voices in the school. Not only for musical purposes, but for social as well, has the club been organized. Under the skillful leadership of Miss Charlotte Hyde much progress has been made. The club members sang at the American Legion gathering, meeting with much favor from the audience. Practice for the graduation music is now being held, and it is expected that on that occasion the club members will do credit to themselves and to the school.



Standing: Miss Hyde, J. Birtwell, J. Ward, H. Ellinwood, C. Emery.
Seated: T. Lakin, L. MacDonald, L. Locapo, L. Bellwood, A. Locapo, W. Wentworth, J. Trull, D. Smith.

ORCHESTRA

Miss Charlotte Hyde, *Director*

Thelma Lakin, *Piano*

Leslie McDonald, *Piano*

Lena Locapo, *Mandolin*

Leslie Bellwood, *Drums*

Adam Locapo, *Violin*

Weston Wentworth, *Violin*

John Trull, *Trumpet*

Donald Smith, *Trumpet*

John Birtwell, *Saxophone*

John Ward, *Violin*

Harold Ellinwod, *Tenor Banjo*

Charles Emery, *Violin*

This year has been the busiest one in the history of our school orchestra. Not only has it responded to all the demands of the school but it also has furnished music for many public performances. It has played in every assembly, for every school party, and also for some of the Parent-Teachers' Association affairs. And what music! Marches, classical numbers, and jazz! It makes no difference to them. Under the leadership of Miss Charlotte Hyde, the members of the orchestra have learned to present music in such a manner that they have pleased and entertained all their audiences. We certainly have appreciated them.



Back row: A. Zabierek, J. Quigley, A. Fisher, E. Davis, W. Simpson.
 Front row: M. Shinkwin, E. Peterson, Miss Dunigan, Miss Reed, R. Billson, B. Sears.

BLUE MOON

<i>Editor-in-Chief</i>	Ebba Peterson	<i>Business Manager</i>	Mildred Shinkwin
<i>Assistant Editor</i>	Edna Davis	<i>Exchange Editor</i>	Ruth Billson
<i>Literary Editor</i>	Josephine Quigley	<i>Reporters</i>	Bertha Sears
<i>Sport Editor</i>	Wendall Simpson		Alice Fisher

Faculty Advisors: *Literary* Helen A. Reed
Business Hilda B. Dunigan

The Blue Moon Staff has published five issues of our school magazine. It was the intention of the staff to mark the holidays with the publication of the Blue Moon. Everyone enjoyed the issues and appreciated the manner in which they brought us all into the spirit of the particular season.

Several improvements were made over last year. The school as a whole has taken a much livelier interest, thereby increasing the circulation to 240, including 13 exchanges. A standard cover, designed by Edith Charlton, representing the front of our school has been adopted. The size of the paper has increased from fifteen to around thirty-five pages. If next year's staff increases the size of the Blue Moon the price will have to be raised to ten cents to cover expenses.

Very few schools our size can boast of a school paper which is entirely written, illustrated, and printed by its own students. The staff should be commended; also, everyone who has contributed material to the magazine.

We all realize that our Blue Moon could not have been so successful without the assistance of Miss Reed and Miss Dunigan. Miss Reed has contributed so generously her assistance in the literary department—also an occasional drawing. Miss Dunigan has given most conscientious and efficient service in her management of the printing, which was done so satisfactorily by the members of the office practice class.



LATIN CLUB

Consuls Clara Dexter
Thelma Paignon

Quaestor Abbie Beattie

Aediles Harriet Flemings
Edna Hoyt
Louise Perham
Roberta Small

Faculty Advisor F. Christine Booth

The Latin Club is composed of students who have successfully completed at least one year of Latin. The form of the organization is similar to that of the Roman government. The meetings are ruled over by the two consuls who preside alternately. The quaestor attends to the records of the club, while the aediles plan the entertainments. Stories of Roman life, jokes, games, and songs, all contribute to the lively meetings. Due to Miss Booth's pamphlets and suggestions the meetings have been both beneficial and interesting.



Back row: R. Jones, C. Dexter, B. Patenaude, L. Pinel, Miss McCarthy, V. Welch, E. Lyman, A. Patenaude, A. Fisher.
 Front row: J. Quigley, E. Peterson, D. Coburn, R. Johnson, A. Loiselle, F. Bowen, E. Davis, M. Grantz.

CHELMSFORD HIGH SCHOOL SAVINGS SYSTEM

<i>President</i>	Ruth Johnson
<i>Vice President</i>	Edna Davis
<i>Treasurer</i>	Annette Loiselle
<i>Assistant Treasurer</i>	Josephine Quigley
<i>Faculty Advisor</i>	C. Edith McCarthy

SENIOR TELLERS

Frances Bowen
 Dorothy Coburn
 Marion Grantz
 Ebba Peterson

JUNIOR TELLERS

Alice Patenaude
 Bertha Patenaude
 Lillian Pinel
 Veronica Welch

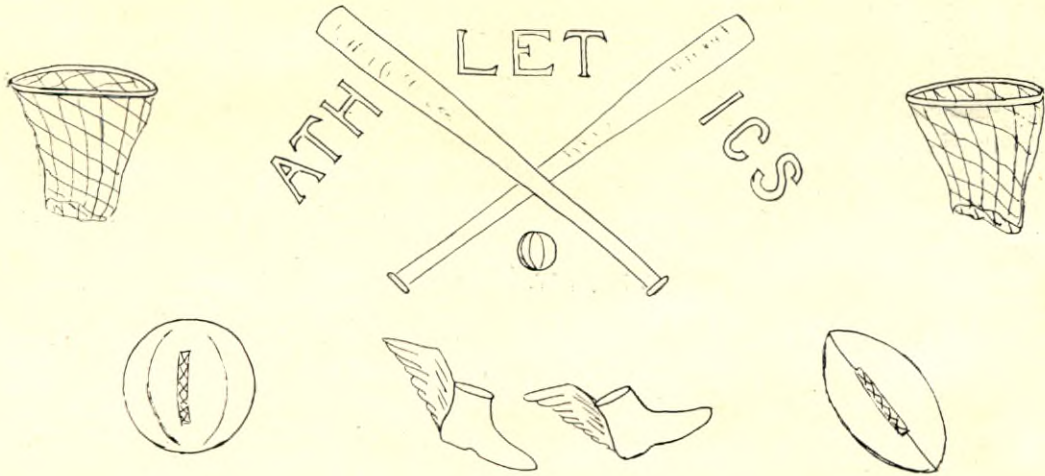
Clara Dexter
 Alice Fisher
 Elizabeth Lyman
 Rachel Jones

Our school savings system, affiliated with the Lowell Institutions for Savings, is one of the most worthwhile organizations in school. The object of this institution is to teach the students the habit of saving which, if firmly established, will give them a spirit of independence, economy, and industry. This year the system was somewhat changed. A bank trustee was present in each study hall in Room 9 on every Thursday. This gave every pupil an opportunity to deposit. Through the industriousness of the trustees and the cooperation of the student body and faculty the bank obtained a record of 100% depositors in February.

Credit is due to all the trustees for the work accomplished, and especially to the President, Ruth Johnson, and the Treasurer, Annette Loiselle, for their most efficient and faithful management of the bank.

Many of the trustees took advantage of attending the One Hundredth Anniversary celebration of the Lowell Institution for Savings and all received the several souvenirs given by the Bank.

Chelmsford



High School



Back row: Mr. Torrey, D. Smith, T. Paignon, A. Larkin, A. Beattie, F. Davis, Coach Thwing.
Front row: J. McQuade, F. Bowen, C. Hoyt, W. McCormack, B. Sears, E. Watt.

ATHLETIC ASSOCIATION

President, Wilbur McCormack
1st Vice President, Frances Bowen
2d Vice President, Clifford Hoyt
Secretary, Bertha Sears
Treasurer, John McQuade
Faculty Advisors: Daniel Torrey

Anna B. Monahan

Senior Member, Earl Watt
Junior Member, Donald Smith
Sophomore Member, Franklin Davis
Three at large, Thelma Paignon
Abbie Beattie
Ann Larkin
Physical Director, Ellsworth R. Thwing

The Athletic Association is the largest organization in the school and has had the whole-hearted and enthusiastic support of the student body. Because of this loyalty, one of the most successful years has been completed. Nearly all the students are members and have paid their dues promptly. A new feature was introduced this year in the form of an athletic banquet.

Money collected from dues was used to finance the following activities: baseball, football, basketball, and tennis. The teams showed a decided improvement over last year. Due to Mr. Thwing's efficient coaching and the hard work of the teams, Chelmsford High has won a place in the "Football World". All games were well attended and students and members of the community demonstrated an increased interest in all activities of the association.

The untiring efforts of the Executive Board are to be especially commended. At the games they sold tickets and refreshments. Each member took his turn selling candy at noon hour in the school, the proceeds going to the Association.

We sincerely hope that in the following years the Athletic Association may continue to increase both in membership and enthusiasm.



Back row: Mr. Torrey, A. Locapo, E. Miner, D. Smith, R. Harmon, R. Eno, Coach Thwing.
 Second row: D. Parker, P. Dunigan, B. Quinn.
 Front: M. Cornellier, J. Dean.

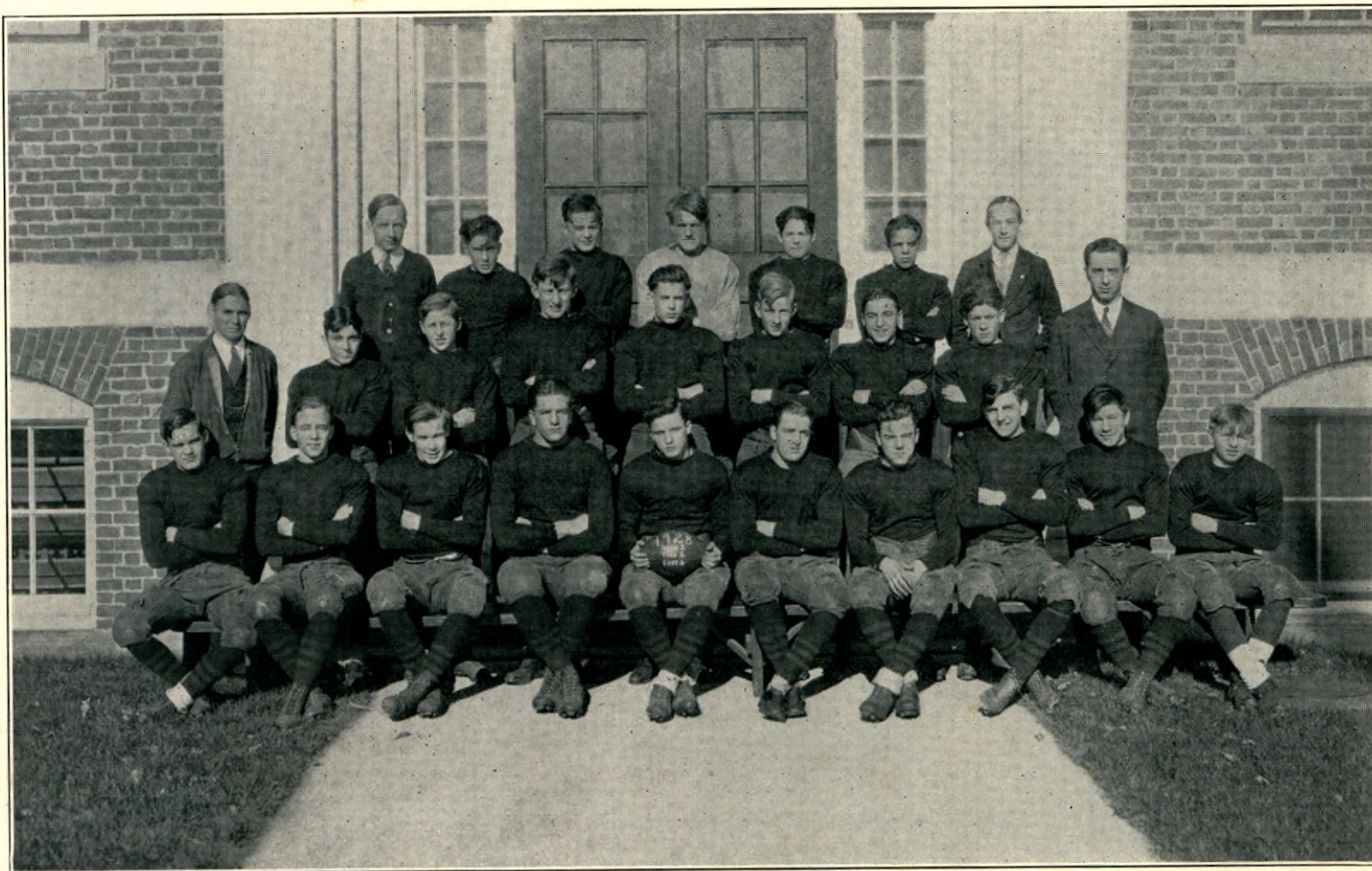
TRACK

On March 9, 1929, Chelmsford High School competed with Billerica and Wilmington High Schools in a relay race, an annual event held at the Lowell High School Annex. The winner was awarded a large silver cup donated by Mrs. Gardner W. Pearson. Chelmsford congratulates Billerica as winner of the cup.

Chelmsford ran a good race and at times had a good chance of winning, but was unfortunately disqualified. There were several falls on the banks but no one was seriously injured. Considering the conditions under which the team labored, the boys did exceptionally well. Nearly all practice sessions were held out of doors on the highway, which at that time of year is most unfavorable to track work. In fact, many practices were called off because of rain or snow. Chelmsford however, offers no excuse. The best team won.

The runners in the order of their start were as follows: E. Miner, D. Parker, D. Smith, R. Harmon, B. Quinn, J. Dean, R. Eno, P. Dunigan.

The team was coached by Mr. Torrey, who is a very capable track man having been Captain of his college team. The team profited under his excellent coaching and look forward to a victory next year.



Back row: S. Proctor, asst. mgr., D. Lupien, J. Trull, J. Birtwell, G. Reis, C. Olsen, substitutes, D. Smith, asst. mgr.
 2nd row: Coach Thwing, M. Cornellier, W. Richardson, J. Faulkner, substitutes; R. Karch, center; F. Davis, r. g., sub.; E. Miner, l. h. b.;
 W. Scobie, sub; Asst. Coach Torrey.
 Front row: C. Hoyt, r. e., L. Bellwood, r. t., D. Parker, r. g., R. McGlinchey, r. h. b., Capt. McCormack, l. h. b., A. Hamel, f. b.,
 B. Quinn, q. b., W. Thayer, center, J. Deputat, l. g., E. Krasneckie, l. t., D. Callahan, l. e. (not present).

FOOTBALL

The opening of school in September of any year is analogous to the opening of the Football season. It is the season of the year when thousands rush to stadiums to cheer their Alma Mater. It is the season of the year when the spirit of every American, young and old, runs at a high pitch.

So the season of 1928 opened with everyone of us. After weeks of hard drill under Coach Thwing, assisted by Mr. Torrey, our team was ready for its season.

SCHEDULE

Chelmsford 8	Johnson 0
Chelmsford 6	Woodbury 6
Chelmsford 6	Shirley Industrial 6
Chelmsford 18	Howe 6
Chelmsford 14	Lowell B 0
Chelmsford 12	Lowell B 7

We call our second season of football successful, having won 2 games, tied 2, and lost 2. We, as all others, enjoy victory, but take our defeats in the true spirit of Football which makes it the game that it is.

At the Athletic Banquet, held in the Town Hall on May 24, the following men received awards. Letters:—Edward Miner, Leslie Bellwood, Clifford Hoyt, Edward Krasnecky, Richard Karch, Joseph Deputat, and Donald Calahan. Certificates:—Wilbur McCormack, Raymond McGlinchey, Amie Hamil, Brendan Quinn, and Donald Parker.



Back row: W. Edge, asst. mgr.; M. Cornellier, D. Lupien, W. Simpson, E. Watt, G. Gauthier, D. Smith, subs; R. McMaster, asst. mgr.
 Second row: A. Zabierek, r. g., W. McCormack, l. f., Capt. W. Thayer, c., R. McGlinchey, l. g., C. Hoyt, r. f., Coach Thwing.
 Seated: F. Davis, l. f., sub.; B. Quinn, r. f., sub.

BOYS' BASKETBALL

After the football season, Coach Thwing issued a call for basketball candidates which was answered by about 25 enthusiastic athletes. William Thayer was elected Captain, with William Edge and Raymond McMaster as acting assistant managers. Edge was elected manager for next year.

SCHEDULE

Chelmsford 8	Johnson 29
Chelmsford 12	Littleton 13
Chelmsford 20	Billerica 6
Chelmsford 19	Billerica 19
Chelmsford 8	Westford 37
Chelmsford 42	Wilmington 13
Chelmsford 24	Johnson 10
Chelmsford 23	Littleton 25

In addition to the regular schedule the boys took a trip to Fitchburg and engaged in a tournament. Our boys were defeated by Hollis.

The team had a successful season, winning third place in the Lowell Inter-Suburban Basketball League.

At the Athletic Banquet held in the Town Hall on May 24, the following awards were given. Letters: Wilbur McCormack, Adam Zabierek, Raymond McGlinchey, and Earl Watt. Certificates: William Thayer and Clifford Hoyt.



Back row: Substitutes, T. Paignon, M. Fitzpatrick, F. Lakin, Coach Thwing, R. Billson, sub., Miss Monahan, r. f., M. Freeman, r. g., A. Olsen, sub., E. Davis, sub
 2nd row: V. McTeague, center, F. Bowen, r. g., I. Kempe, c. g., D. Bliss, c. g., A. St. Onge, l. g., E. Lyman, r. f.
 Front row: A. Hehir, sub., Capt. Hoyt, l. f., A. Beattie, l. f., sub.

GIRLS' BASKETBALL

The second girls' basketball team of Chelmsford High School was organized under the supervision of Coach Thwing, assisted by Miss Monahan. Edna Hoyt was elected captain and Abbie Beattie, manager.

SCHEDULE

Chelmsford 15	Johnson 27
Chelmsford 23	Littleton 13
Chelmsford 18	Westford 32
Chelmsford 21	Wilmington 23
Chelmsford 24	Johnson 20
Chelmsford 31	Littleton 13

During the season an Interclass Basketball Tournament was held between different class teams to determine the victor. The Freshmen girls won the title of "Champion."

At the Athletic Banquet, held in the Town Hall, May 24, the following awards were given. Letters:—Edna Hoyt, Veronica McTeague, Elizabeth Lyman, Alice St. Onge, Frances Bowen, Madeline Freeman, Abbie Beattie and Ruth Billson. Certificates:—Olga Kempe and Dorothy Bliss.



Back row: P. McGovern, C. Emery, fielder; F. Grant, sub.; L. Bellwood, catcher, sub.; S. Proctor, short-stop; D. Parker, N. Dixon, assistant manager.

2nd row: D. Smith, c. f.; D. Lupien, pitcher; J. Dean, 2b, sub.; R. Harmon, J. Kinch, fielder; J. Clark, r. f.; Coach Thwing.

1st row: R. Eno, W. Thayer, l. f.; W. McCormack, catcher; R. McGlinchey, pitcher; P. Dunigan, 2b; C. Hoyt, 3b; Capt. E. Miner, 1b.

BASEBALL

In the spring a young man's fancy lightly turns to thoughts of baseball. When the last snow bank has been melted away by the warm spring sun, every lover of our national game looks for a bat and a glove. So it was with us.

The team, under the direction of Coach Thwing, assisted by Mr. Torrey, has put in some strenuous practice. The school has entered a four team league consisting of Johnson (North Andover), Wilmington, Howe (Billerica) and Chelmsford. The teams are competing for a large baseball trophy donated by the Horace Partridge Sporting Goods Company.

SCHEDULE

<i>April</i> 19	Keith Academy at Lowell.
<i>May</i> 7	Keith Academy at Chelmsford High School.
<i>May</i> 10	Billerica at Billerica.
<i>May</i> 15	Nashua Juniors at Nashua.
<i>May</i> 17	Johnson at N. Andover.
<i>May</i> 24	Wilmington at Chelmsford High School.
<i>May</i> 31	Billerica at Chelmsford High School.
<i>June</i> 4	Nashua Juniors at Chelmsford High School.
<i>June</i> 7	Johnson at Chelmsford High School.
<i>June</i> 11	Vocational at Lowell.
<i>June</i> 14	Wilmington at Wilmington.
<i>June</i> 17	Vocational at Chelmsford High School.

A FAREWELL

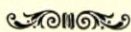
It is with regret we learn of Mr. Thwing's resignation to accept a position in Braintree. We shall miss his friendliness and guidance, and will always remember the principles of truth, loyalty, and fair play, which he has ever held before us.

Mr. Thwing came to us in 1927 from Aurora College in Illinois and inaugurated the first physical training program in our school organization. The results of his untiring work and ability were well displayed at our first Field Day, May 25, 1928. It was an excellent showing for students who had received but one year's preparation. This year our Field Day, on June 17, promises to surpass the one of last year.

We have, perhaps, known him best as "Coach" for under his direction our athletics have been built up considerably in the last two years. Chelmsford High School has been proud of all its teams,—our seasons of football and basketball have been a credit to us all. This year we rejoice in our victory in baseball, for we are the proud possessors of the cup offered by the Horace Partridge Company to the best team in the Lowell Suburban League.

We, one and all, will miss Mr. Thwing and hope his years in the future will be marked with happiness and success.

Autographs



Elizabeth Gray - Remember the Sunday
School Class at the Episcopal
Chapel.

Alano Melvols '31 Remember our Latin class.

Ruth Sargent '31. Wishing you the best
of luck in your junior
Latin.

Bob Dunham - Only two more years
to go + you'll be the
conqueror of High School.
You always studied hard
in period 4 —

L. J. Ward '31 Best of Luck

J. Deputat '31

George Parkhurst '32

Best Wishes ~ Here's wishing you will succeed these
other two years and become one of the
many in my graduation class.

Don't forget your classmate - Lena A. Lopez

Don't forget
those tests in Latin.

As if it was possible(?)

Ruth Chalmers

Classmate '31

Autographs



Helen A. Reed
 Edith M. Donahoe
 Irma B. Monahan
 Jeanne M. Low
 Hilda B. Wenzel
 Thelma Paigow '30
 Daniel W. Torrey

Pats Ryan '31 Here's hoping we are
 in 7 bench class together again next year.

Pauline F. Greene - Wait for your hair comb!
 Eleanor Beckvold - Class of '31 - Remember
 the times in Room 1. - Hoping that we
 don't make so much noise next year.
 Raymond D. Johnson, "Brownie"

Roberta Small - '31 - Here to one of the
 nicest boys in C. N. I. Love you as
 a "jolly junior" ~ "Bobby"



IT is our hope that as you read this book it will bring closer to you the ideals which should be fostered by your years in Chelmsford High School, and that some day when you are far away and no longer young in years it shall let you look once more at that most precious thing in life — your youth.

*Here's to a jolly
junior next year!*

James L.

U.S. PATENT OFFICE
TRADE MARK REGISTERED
21

THE
BALFE SERVICE COMPANY

Printers of Your Year Books for 1927 - 1928 - 1929

190 MIDDLE STREET

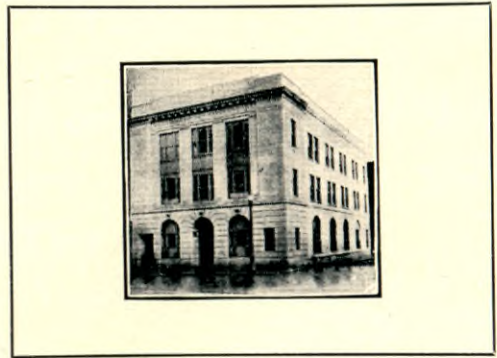
LOWELL, MASSACHUSETTS

Make the most of

YOUR DIPLOMA

Just a Red-headed
freshman of '32 Mildred
Erikson

A high school diploma is an indication of a splendid educational foundation satisfactorily completed.



By adding to your high school education a few months' intensive training in business subjects, you will make your diploma worth more to you. Hundreds of young men and young women have taken business courses in this school after graduating from high school.

These young people now occupy pleasant and well-paid positions.

WRITE OR PHONE FOR COMPLETE INFORMATION

THE KIMBALL SCHOOL
226 Central Street

LOWELL

Phone 963

Compliments of

L. G. BALFOUR COMPANY

Jewelers

Attleboro, Massachusetts

*Wishing all the success
possible in your journey
year.*

Adelheid D. Elliott



CAMERON BROS.

Wholesale Confectioners

FOUNTAIN SUPPLIES





Deposit in the

Chelmsford High School Savings System

— of the —

LOWELL INSTITUTION FOR SAVINGS

Incorporated 1829

18 SHATTUCK STREET

Fisher Business Colleges

COMPLETE COURSES IN ALL

Business Subjects

Individual Instruction

Enter Any Day

Graduates Placed

30 Franklin St.
374 Broadway

LIBerty 2065
SOMerset 1800

Compliments of

The WARREN KAY STUDIO

Home and Studio Photographers

BOSTON, MASS.

TELEPHONE HANCOCK 6116

Class Photographers of the Chelmsford High School

JOHN J. DUNIGAN

JAMES LONG

Compliments of

Dunigan Coal Co.

TELEPHONE 843

NORTH CHELMSFORD

*Strength**Security**Service*

Interest Begins Monthly on Savings Accounts

MIDDLESEX NATIONAL BANK
of LOWELL

MERRIMACK at PALMER STREET

Wishing you success
as a smart junior.
Edith Alcorn

Compliments of

A FRIEND

Here is wishing the best
of luck to you as a
junior.
Ann Larkin

The
CENTRAL SAVINGS BANK

Our Advertisers

The Class of 1930 wishes to express its appreciation and gratitude for the generosity and friendship of the business and professional men of Lowell and Chelmsford who have made this year book a reality. The class fully understands that without such cooperation this book could not be published.

This is indeed a big favor and we want you to feel that in later years when our earning power as men and women of the world will be increased this favor will be repaid doubly.



No drink put in a bottle is more wholesome for old or young, in sickness or in health, summer or winter, at meals or for casual refreshment, than *good* Ginger Ale.

Open a *SAVINGS ACCOUNT*

— in the —

Lowell Trust Company

SAVINGS DEPARTMENT

Always Paid $4\frac{1}{2}\%$ Per Cent Dividend

Commercial Accounts Solicited

Safe Deposit Boxes

Foreign Drafts Issued

265-281 CENTRAL and 14 GORHAM STREETS

Lowell, Massachusetts

I remember when you had a little of Freshman math. I beside me and then you left school for the rest of the year. As a result, I miss you in my classes now. Good luck, Alice Fisher '30

Chelmsford Pines

Steak and Roast Chicken Dinners
Also Light Lunches

Parties and Clubs Accommodated

Free Parking

Telephone 6619

United Cloak & Suit Store

Ladies' and Children's Ready-to-Wear
Millinery — Hosiery — Underwear
Of the Better Grade

Branch Store
Boston, Mass.

117 to 129 Central Street
Lowell, Mass.

Thibault's Filling Station

"Lowell's First Filling Station"
Goodyear Tires & Veedol Oils

Telephone 6628

980 Chelmsford St.

Chelmsford Laundry

Outdoor Drying

Telephone 6827

Compliments of

A. & P. Diner

HARRY L. PEAVEY, Proprietor

Princeton Street

North Chelmsford, Mass.

Pommes Filling Station

J. W. FREMEAU, Proprietor

TEXAS GAS AND GOLDEN OIL OUR SPECIALTY

OILS: Texaco, Quaker State, The New Mobile

Wholesale and Retail

Princeton Boulevard, corner Church Street

North Chelmsford, Mass.

Telephone 9291

John P. Quinn

COAL, NEW ENGLAND COKE

and NAVICOAL

Telephones 1180—2480

Office & Yards

GORHAM & DIX STS.

Branch Office

BRADLEY BUILDING

Compliments of

EDWARD M. KELLEHER

Secretary-Treasurer

Eastern Massachusetts District Board of Approved Basket Ball

Secretary-Treasurer

Greater Boston Umpires Association

Valuable Banking Connections

Association with a financial institution of high standing in the community is in itself of value to the individual because he shares to a certain extent in the prestige of the banking house which handles his financial affairs. This point is worth consideration when you place your checking or savings accounts.

The UNION NATIONAL BANK

In the Business Heart of Lowell

CAPITAL and SURPLUS \$1,200,000

Compliments of

Keith's Theatre Barber Shop

LESTER H. CAREW, Prop.

Three Barbers

41 Bridge Street Lowell

WESTLAND MARKET

H. W. HINDMAN

*Meats, Groceries and
Provisions*

Telephone 132

ARTHUR F. PRATT

*House Painter and
Interior Decorator*

*Paper Hanging, Tinting,
Enameling, etc.*

All work done in a satisfactory manner at reasonable prices.

Chelmsford, Mass.
Telephone 4087-M

*Walter Johnson
Class '32*

Compliments of

A FRIEND

*Just a green Freshman
now but not for - ever*

Speedway Filling Station

D. W. DEXTER, Prop.

Refreshments — Luncheons

Stop here for

Butter Kist Pop Corn — A Specialty

Large Parking Space

Texaco Gas and Motor Oils

Tyngsboro Road

North Chelmsford

“Say It With Flowers”

Morse & Beals

Lowell's Leading Florists

14 Kearney Square

Telephone 4400

Compliments of

North Chelmsford Bowling Alleys

JOSEPH D. RYAN, Proprietor

F. J. Flemings Estate

— Dealer in —

Wrapping Paper and Twine

145 Perry Street

Lowell, Mass.

Sherburne Brothers

Dealers in

LUMBER

Tyngsboro, Mass.

Telephone 53-3

Blanche Hard Murphy

Teacher of

*Stenography and
Allied Business Subjects*

Residence:

1107 Chelmsford Street

Chelmsford, Mass.

412 Central Block
Lowell, Mass.

Compliments of

GEORGE E. GAGNON

Plumbing and Heating

North Chelmsford

Telephone 7166

FRANK J. GARVEY

Compliments of

WESTLAND DAIRY

G. WINTERS

Patenaude Brothers

Painters and Contractors

Calcimining, White Washing
and Paper Hanging

North Chelmsford, Mass.

The Way to
Complete Radio Happiness

GRANT'S SHOPPE

Grebe — Kolster — Zenith

Chelmsford, Mass.

Telephones 4880—71311

JOHN L. MURPHY

Plumbing and Heating

— Agent —

PUTNAM BOILERS

North Chelmsford, Mass.

Telephone 4488-W

Compliments of

Lowell Oakland Co.

*Lowell Home of
Oakland All American Sixes
— and —
New Series Pontiac Sixes*

Compliments of

B. & L. LAUNDRY

E. I. STILLINGS

No. Billerica
Telephone 95-3

Lowell
81 Crescent Street

Telephone, Lowell 3743

Compliments of

The WOMAN'S MART

*Ladies' and Children's
Wearing Apparel*

127-129 Merrimack Street

Lowell, Mass.

Compliments of

A FRIEND

Compliments of

MARY E. VALENTINE

North Chelmsford

Compliments of

Dr. Laura Belle Deane

513-514 Wyman's Exchange
Building

Lowell, Mass.

North Chelmsford
Pharmacy

B. E. MASTERSON, Proprietor

*Drugs, Prescriptions,
Sodas, Candy, Cigars*

If you want Grade A Milk
Buy it of

WILSON BROS.

Chelmsford, Mass.

M. J. SCOLLAN

Radios

Groceries

Ice Cream

Mt. Pleasant Street
North Chelmsford, Mass.

Telephone 4431-W

Compliments of

ANDERSON'S MARKET

North Chelmsford, Mass.

Compliments of

Haynes' Greenhouses

1328 Gorham St. Lowell, Mass.

For Real Home Cooking
— TRY —

North Chelmsford
Food Shop

Our Specialties

Meat Pies, Fish Cakes, Baked Beans,
All Kinds of Pies and Pastries
Celebrated Boiled Ham
Telephone Lowell 8876-W

*May you sail on
the ship of ambition
and land on the
shore of success.*

TRIO STORE CO.

GROCERIES

South Chelmsford, Mass.

*Ruth Clark
1932*

Telephone 5864-W

Call up for Appointments

Milady Beauty Shoppe

ALICE P. COTE, Prop.

Specializing in
Permanent Waving
Water Waving
Marcelling

329 Hildreth Building
Lowell, Mass.

KENNEY

For FLOWERS

Bradley Building
Telephone 5378

Compliments of

H. M. STURTEVANT

Now located near the R. R. crossing
on the Lowell Road

Automobile Repairing and
Overhauling

Telephone Connection

Pictures

Framing

The
HARMON ART STORE

120 Central Street
Lowell, Mass.

Greeting Cards Lending Library

EVA A. DUPUIS

Hemstitching and Picot Edging,
Covered Buttons, Buttonholes,
Pleating, Rhinestones and Spots
Set In.

196 Merrimack Street Lowell
Telephone 1150 Opp. KIRK ST.

*May you
make a great
success of your
summer year in
C. D. S. Co.
W. Brockley Hugel 1932*

A FRIEND

My Business is Diamonds

EDWARD W. FREEMAN

The Diamond Merchant of Lowell

Proprietor
Harry Raynes Store

171 Central Street
ESTABLISHED 1831

Compliments of

A. J. MELLO
Barber

Odd Fellows Hall
Chelmsford Center

Here to Serve the Public



Compliments of

R. G. LANNER

Bread and Pastry

Meat and Groceries

JAS. H. BUCKLEY

Teacher of Trumpet

Studio

95 Paige Street Lowell, Mass.

J. C. and W. T. Monahan

*Civil Engineers and
Surveyors*

219 Central Street Lowell, Mass.

Compliments of

A FRIEND

Compliments of



Men's and Women's Furnishings

34 Bridge Street
Lowell, Mass.

HARRY W. SARGENT

*Plastering and
Brickwork*

WESTLANDS

Chelmsford Square Garage

*A full line of Pure Paints
and the Best in Hardware*

Auto Service and Livery

Telephone 54911

FREDERIC A. FISHER

Lawyer

C-OV-1st

The French Artist in Beauty Culture

*Marcel Waving and
Permanent Waving*

Hair examined FREE

40 Middlesex St., Lowell

Telephone 808-R

VIC'S BARBER SHOP

24 Middlesex St., Lowell

Telephone 808-W

WHITCOMB'S Fruit and Berry Farm

Home Made Ice Cream

Butter-Kist Pop Corn

Apples

NORTH ROAD

Chelmsford

The Davis Cabinet Shop

A. H. DAVIS, Prop.

Furniture Repaired

Scissors Sharpened

Patterns Made

General Jobbing

Mowing Machine Knives Ground

Near Town Hall

CHELMSFORD CENTRE, MASS.

Telephone 2332-R

DR. ROONEY

Dental Surgeon

Strand Building

Central Street

Lowell, Mass.

Compliments of

RICHARD T. BOYD

Contractor and Builder

Golden Cove Road

Chelmsford

Telephone 2328-J

Buy your TEA and COFFEE

from

P. S. WARD CO.

North Chelmsford

Telephone 6633-W

	ESTATE ACCOUNTING	
TAXES	FREDERICA SNOW	AUDITS
	330 HILDRETH BUILDING	
	LOWELL, MASS.	
	BOOKKEEPING SYSTEMS	

ROY E. PAIGNON

*Fruit and Produce
Sold on Commission*

Tel. Conn. Chelmsford

Compliments of

A FRIEND

E. E. PAIGNON

*Wirthmore Feeds
and
John Deere Implements*

South Chelmsford, Mass.

HOW TO SAVE MONEY

Buy your Furniture at

The

Worthley Furniture Co.

160 Middlesex Street
Lowell, Mass.

R. A. HENDERSON

Socony Gas & Motor Oils

GROCERIES

Cigars, Cigarettes and Tobacco,
Candy, Ice Cream and Tonics.

Chelmsford St. opp. Perham Park
Telephone 78398

J. JOSEPH McGREEVY, D. D. S.

Dentist

40 Middlesex Street
Washington Bank Building
Lowell, Mass.
Telephone 3920

CRYSLER COMPANY

Brushes of All Kinds

NORTH CHELMSFORD

EDWARD MURPHY

BARBER

Railroad Crossing
North Chelmsford, Mass.

Compliments of

A FRIEND

The more valuable your time,
the more essential that a
Good Watch
should measure it.

LYLE

181 Central Street Lowell, Mass.

JOHN J. RILEY

Groceries and Provisions

1222 Gorham St. Lowell, Mass.
Telephone 378



*Where Comfort Conforms
with Style*

LOWELL

Arch Preserver Shoe Shop

38 Prescott Street Lowell, Mass.

WILLIAM W. GLISON

Full line of

*Fancy Groceries, Meats, Candy,
Tobacco, Ice Cream, etc.
Paints, Varnishes and Drugs*

Come in and save yourself a trip
to the city.

West Chelmsford, Mass.
Telephone Lowell 79108

Frederick E. Morris,
D. M. D.

Dentist

Old City Hall Building
226 Merrimack St. Lowell, Mass.
Telephone 4381

RADIO

SETS, ACCESSORIES and
SERVICE

RAY HAZELTINE

Chelmsford, Mass.

Compliments of

A. B. ANDERSON

GROCCER

West Chelmsford, Mass.

Compliments of

A FRIEND

Compliments of

E. R. BLOOD & SON

MILK

Purity and Quality Guaranteed

Over

15 Years' Service

The GOODWIN
Screen & Weather Strip Co.

Established 1885

Warren Ave. Chelmsford, Mass.

Telephone 4430

W. D. FALLS

Rexal Store

Toilet Goods, Sodas,
Confectionery and Ice Cream

Chelmsford, Mass.

Telephone 70703

W. H. SPAULT

BARBER

Your Patronage Solicited

Chelmsford Center

JOHN J. MONAHAN

Fire Loss Adjuster (*Licensed*)

219 Central Street

Lowell, Mass.

ELLA M. BURKE

Importer and Designer

of

EXCLUSIVE MILLINERY

128 Merrimack Street

Lowell, Mass.

Hosford Bldg.

Telephone 1703

DORA ELSIE RYAN

Teacher of Piano

North Chelmsford
Telephone 2892-J

Compliments of

JOSHUA MACHON

Carpenter and Builder

North Chelmsford
Telephone 4365-21

Compliments of

A FRIEND

RAY'S FILLING STATION

*Dayton & Goodrich Tires
Tire Repairing*

Glen Avenue corner Chelmsford St.
Telephone 77580

ELSIE SMITH

*North Chelmsford's Leading
Confectionery Shoppe*

Ice Cream Groceries Tobacco
Gift Cards for All Occasions
Lending Library

Compliments of

VINAL SQUARE SHOE FIX

CHAS. PELLETIER, Prop.

Thomas J. LeMasurier

*Rough and Hammered
Granite*

Dunstable Road,
North Chelmsford Box 312

The PARKHURST PRESS

*Raised Printed
Wedding Invitations*

Newest Styles Superior Workmanship
Very Low Prices

Chelmsford
Telephone 4295