



Original location next to Middlesex Canal in Middlesex Village, 1832-1930s

Middlesex Canal Association



Original location next to Middlesex Canal, 1832-1930s, RR tracks and river beyond

Middlesex Canal Association, 1917



In the care of Proctor Lumber Company in North Chelmsford, 1930s-1955

Chelmsford Historical Society

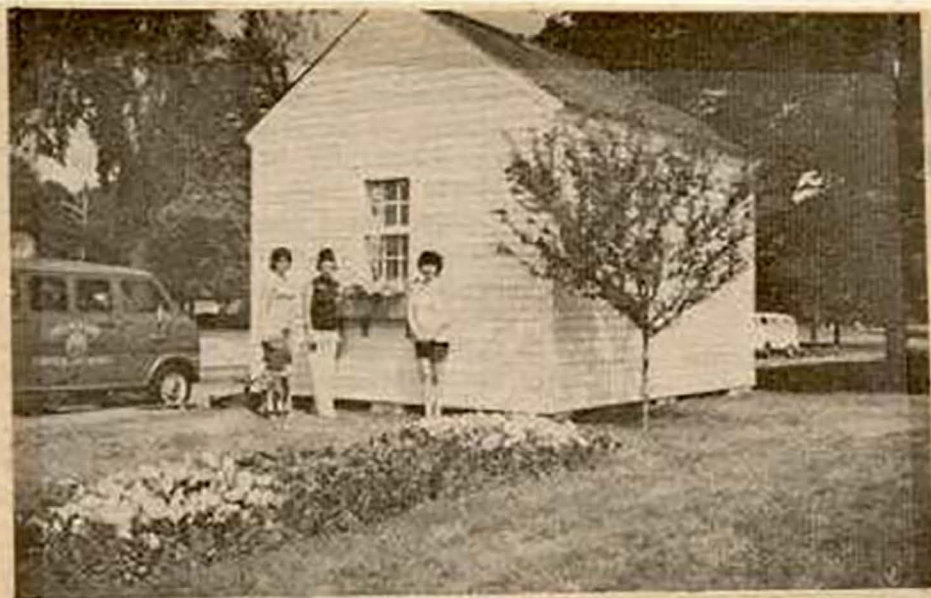




Stored behind the 1802 School House from 1957 to 1975

Chelmsford Historical Commission 1973

CHELMSFORD NEWSWEEKLY, THURSDAY, JULY 24, 1975



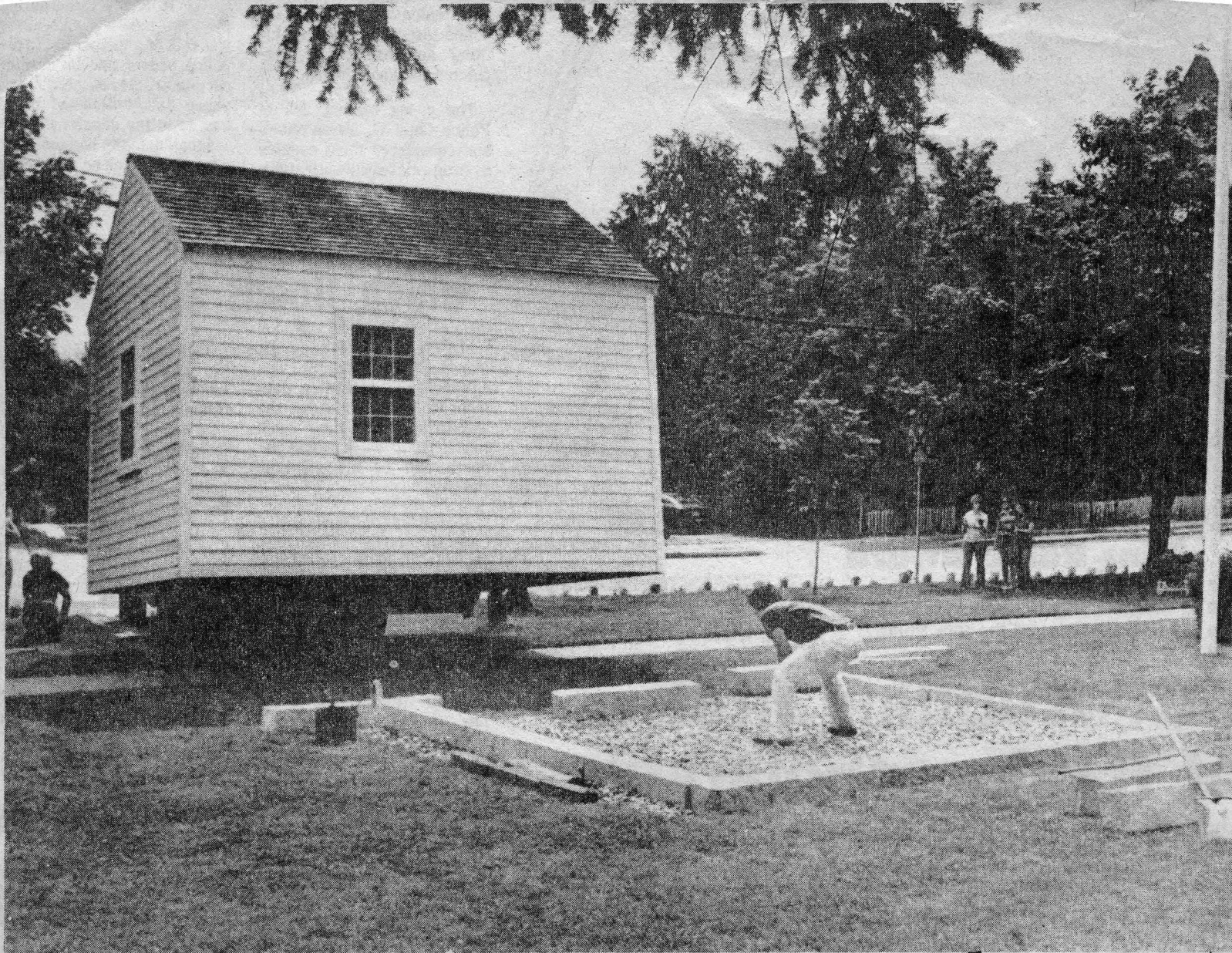
HELPING WITH THE CLEAN UP are Carol Merriam and son David, Estelle Abely, and Robbie Zyllich.

Lazy Daisy Gardeners Help Beautify Town Hall

The Lazy Daisy Gardeners project for the past two summers at the Town Hall has provided us with an opportunity to serve our community. The project has included the flower bed of marigolds planted during the summer of 1974, an array of tulips in the spring of 1975, and the numerous beds including the bi-centennial red, white, and blue petunias for this summer. Recently, the Middlesex Canal Toll House has been moved to Town Hall property to provide an information booth to the public for our bi-centennial celebration. A decision to put window boxes and a flower bed in front of the Toll House was made by the selectman's office and the garden club board. The Toll House will remain at the Town Hall for the next eighteen months.

Located on Town Hall Lawn from 1975 to 1977

Chelmsford Newsweekly 7/24/1975



Sun Staff photo by Hunt

...as it was for many months before a new location was decided on, the Middlesex Canal Tollhouse was guided onto a new

Up in the air

foundation this week. The 19th century structure was picked up from its tem-

porary viewing place in front of town hall, moved across the street and permanently settled on the common.

6-16-77

Moved from Town Hall Lawn to Center Common, June 1977

Lowell Sun 6/16/1977



Toll House final location on Chelmsford Common 1977-Present

10/18/2008 Don Miffitt